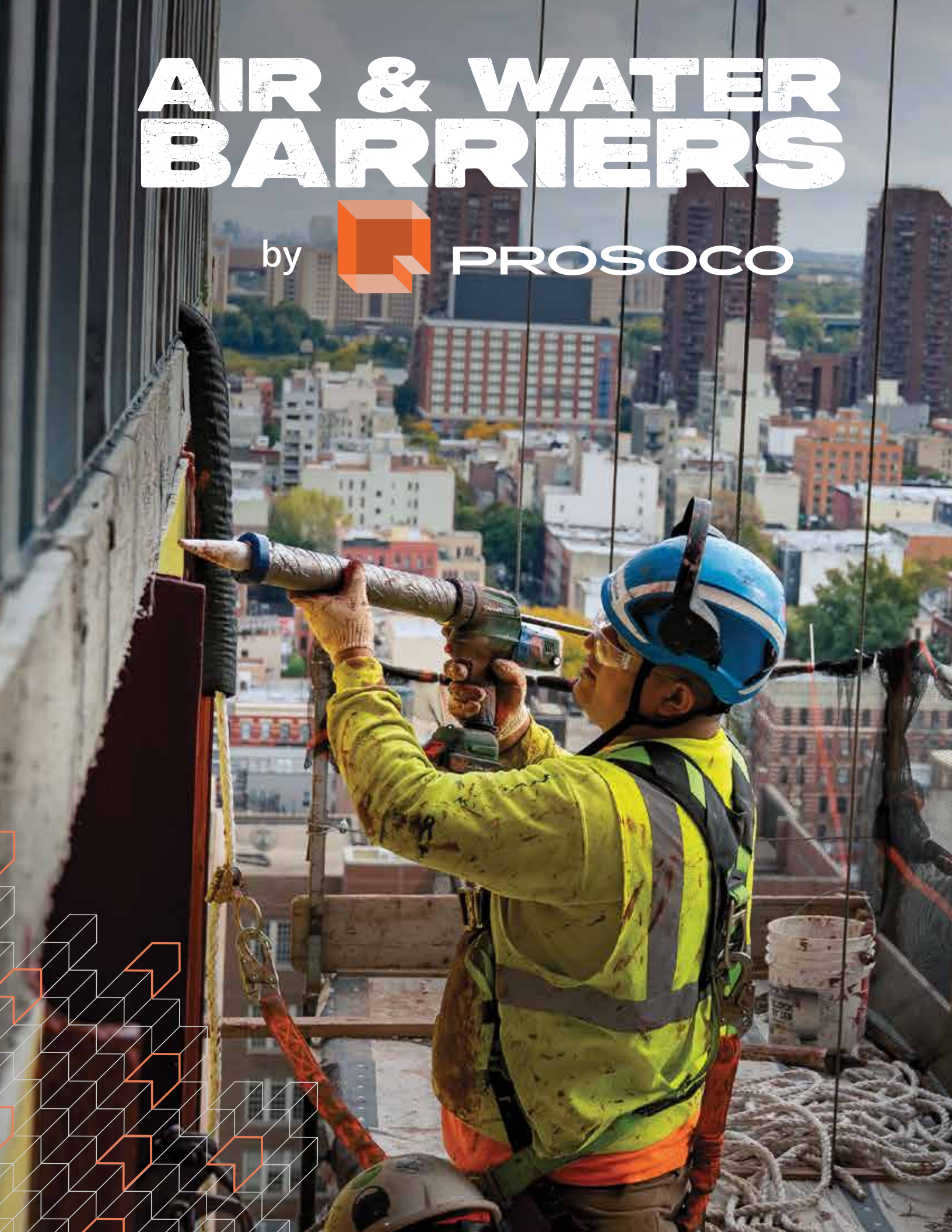


AIR & WATER BARRIERS

by

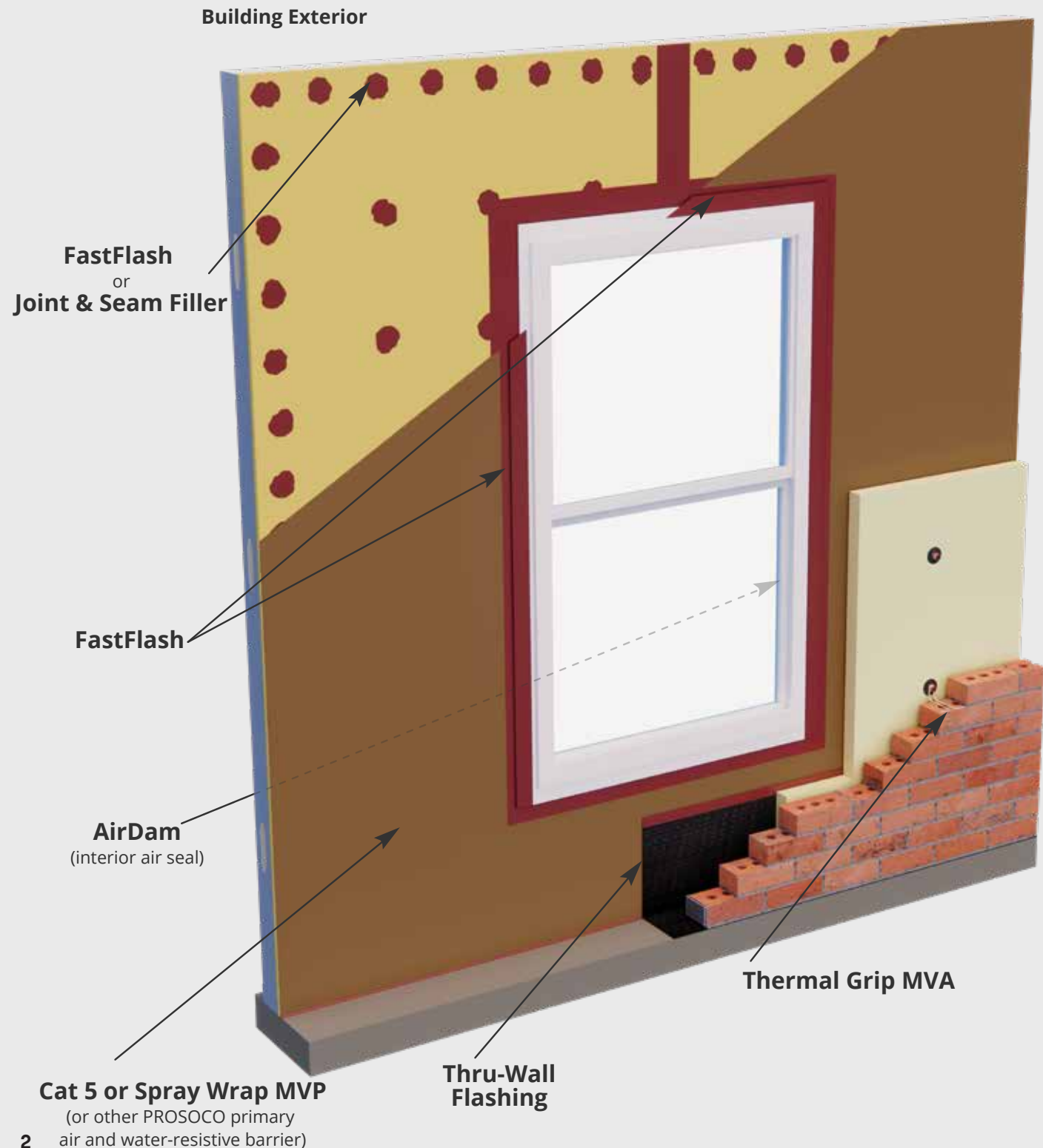


PROSOCO



Your building is **more than the sum of its individual parts.**

All components in a wall assembly must work together as a system. That's why we recommend (as do most building codes) a systems approach to **protect your entire building.**





FAST & EASY TO USE

Forget peel-and-stick. The R-Guard system is proven to install 34% faster than traditional peel-and-sticks.



DIFFICULT DETAILS MADE EASY

R-Guard's flashing membranes can be painted on, so it is easy to protect even rough, complex, or irregular surfaces.



BONDS TO WET SURFACES

R-Guard can stick to wet surfaces and is immediately waterproof – taking rain out of the equation.



SEAMLESS LAYER OF PROTECTION

The Cat 5 system of products all feature the same chemistry, so they cure into one another to create one continuous, unbroken, fully monolithic layer.



GREEN BUILDING

Can meet the most stringent environmental standards including LEED, Living Building Challenge Red List, CALGreen, WELL, and Fitwel.



PROVEN TO LAST

FastFlash is the only fluid-applied flashing material on the market that's been independently proven to perform. Visit prosoco.com/10years.

Building Interior

FastFlash

AirDam

non-gassing, polyethylene, foam backer rod

STEP ONE

Treat transitions, penetrations, and board seams with FastFlash or Joint & Seam Filler. Seal all fasteners, joints, transitions, penetrations, and board seams with FastFlash or Joint & Seam Filler.

STEP TWO

Cover the full rough opening with FastFlash. Use FastFlash on all inside corners, joints and seams, and framing surfaces within the rough opening and the structural wall surrounding the rough opening.

STEP THREE

Seal the entire wall field with Cat 5, Spray Wrap MVP, or VB. Apply the selected PROSOCO primary air and water resistive barrier over the sheathing.

STEP FOUR

Seal interior with AirDam. Use AirDam to tie the window into the larger air and water management system, and to prevent water which may collect in the window frame from entering the conditioned space.

The devil is in the details.

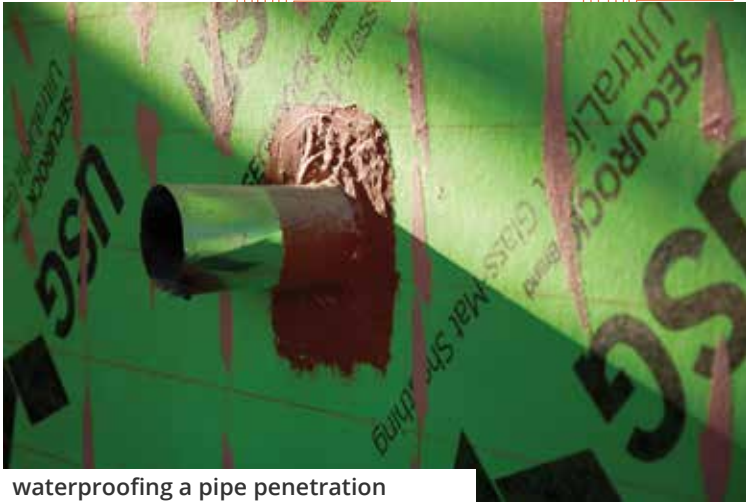
(the air and water is too)

PROSOCO's R-Guard system is adept at protecting all the difficult details and complex geometry that construction can throw at you. Circular penetrations, acute angles, even rough, uneven or damaged surfaces can be easily covered with FastFlash. You can gun and spread it or even brush it and FastFlash sticks to almost anything. The R-Guard system is a fail-proof solution to fill in all those gaps and holes, creating a moisture management system that directs water out of the wall assembly.



FastFlash roller grade applied to rough opening on a multi-family residential building.

window installation in CMU wall
protected with FastFlash



waterproofing a pipe penetration
with FastFlash

fastener locations spot protected
with FastFlash



arched window protected with FastFlash



existing building window replacement
protected with FastFlash



ROUGH OPENINGS & PENETRATIONS

FastFlash

Liquid flashing membrane

Use FastFlash in rough openings, to fill joints and seams, to counter-flash waterproofing and air barrier components in new or existing wall assemblies, to seal around penetrations, or as a transition from roof to wall details. Available in gun or rollergrade.



**STRONG, DURABLE,
WATER-TIGHT SEAL**



**GUN IT, BRUSH IT,
OR ROLL IT**



**STICKS TO WET
SURFACES**



**BREATHABLE – ALLOWS
SUBSTRATE TO DRY**



**BONDS TENACIOUSLY
ALMOST ANYTHING**



**NO SOLVENTS. NO ISOCYANATES.
NO PHTHALATES. VOC-COMPLIANT.**

Joint & Seam Filler

Fiber reinforced fill coat and seam treatment

Joint & Seam Filler is designed to fill openings and create transitions where flexible reinforcement is required to bridge larger gaps and provide continuous support of fluid-applied flashing membranes, waterproofing or air barrier components.



**BRIDGE GAPS UP
TO ONE INCH**



**STRONG, DURABLE,
WATER-TIGHT SEAL**



**STICKS TO WET
SURFACES**



**BREATHABLE – ALLOWS
SUBSTRATE TO DRY**



**BONDS TENACIOUSLY
ALMOST ANYTHING**



**NO SOLVENTS. NO ISOCYANATES.
NO PHTHALATES. VOC-COMPLIANT.**



ROUGH OPENINGS & PENETRATIONS

AirDam

Air and weather barrier sealant for windows and doors

AirDam is an STP (silyl-terminated polymer) sealant formulated to create a long-lasting, weather-tight seal that prevents moist outside air from entering, and conditioned indoor air from escaping around window and door assemblies.



**BRIDGE GAPS UP
TO ONE INCH**



**STRONG, DURABLE,
WATER-TIGHT SEAL**



**STICKS TO WET
SURFACES**



**BREATHABLE – ALLOWS
SUBSTRATE TO DRY**



**BONDS TENACIOUSLY
ALMOST ANYTHING**



**NO SOLVENTS. NO ISOCYANATES.
NO PHTHALATES. VOC-COMPLIANT.**



Sendero Verde Apartments Tower A // New York NY
FastFlash being applied to the wood, metal, & concrete of the rough opening

ON THE WALL

Cat 5

air and waterproof barrier

Cat 5 produces a highly durable, seamless, vapor-permeable, elastomeric weatherproofing membrane on exterior sheathing, CMU backup walls, and precast concrete. Can even withstand the wind-driven rain of a Category 5 hurricane.

Cat 5 is also available in a Rain Screen version, which is the same product, but in dark bronze color, and an ICF version, which is specifically designed for use on insulated concrete forms.



STRONG DURABLE PROTECTION



BREATHABLE – ALLOWS SUBSTRATE TO DRY



CREATES SEAMLESS MEMBRANE



BONDS TO DAMP SUBSTRATES



INSTALLS IN ANY WEATHER



NO SOLVENTS. NO ISOCYANATES. NO PHTHALATES. VOC-COMPLIANT.

Spray Wrap MVP

air and water-resistive barrier

Spray Wrap MVP is a fluid-applied, vapor-permeable, air and water-resistive barrier that stops air and water leakage in cavity wall, masonry veneer construction, as well as in stucco, EIFS and most other building wall assemblies.

Spray Wrap is also available in a Rain Screen version, which is the same product, but in dark bronze color.



STRONG DURABLE PROTECTION



CAN BE SPRAYED OR ROLLED



REDUCES AIR LEAKS THROUGH ENVELOPE



SELF-SEALS AROUND FASTENERS



BREATHABLE – ALLOWS SUBSTRATE TO DRY



LOW ODOR. NON-TOXIC. VOC-COMPLIANT.

VB (Vapor Barrier)

air & water-resistive barrier and water vapor barrier

A fluid-applied air and water-resistive barrier that stops air and water leakage in cavity wall, masonry veneer construction, as well as in stucco, EIFS and most other building wall assemblies.



STRONG DURABLE PROTECTION



CAN BE SPRAYED OR ROLLED



REDUCES AIR LEAKS THROUGH ENVELOPE



CURES QUICKLY



SELF-SEALS AROUND FASTENERS



LOW ODOR. NON-TOXIC. VOC-COMPLIANT.

ON THE WALL

Which R-Guard field coating is right for me?

Primary field coatings cover the majority of the wall, everything between the penetrations and transitions that are finished with R-Guard detailing products such as FastFlash. The five variations of primary field coatings are: Cat 5, Cat 5 Rain Screen, VB (Vapor Barrier), Spay Wrap MVP and Spray Wrap Rain Screen. Each is formulated to fit the needs of specific projects. Which is best for your project?

	CAT 5	CAT 5 RAIN SCREEN	SPRAY WRAP MVP	SPRAY WRAP RAIN SCREEN	VB
Can be applied with airless sprayer	✓	✓	✓	✓	✓
Can be applied to damp surfaces	✓	✓			
Waterproof	✓	✓			
Water-resistant			✓	✓	✓
Vapor-permeable	✓	✓	✓	✓	



UCLA Olympic & Centennial Hall dormitories // Los Angeles CA
Cat 5 being spray applied onto gypsum sheathing



ACCESSORIES



SureSpan EX

Designed to help create flexible and durable transitions between various types of air and water barriers and the curtainwall, storefront, or window being installed.



SureSpan Adhesive

A gun-grade wet set adhesive specifically formulated to adhere SureSpan EX. This single-component, silyl-terminated-polymer (STP) is easy to gun, spread and tool.



PorousPrep

Seals the dry, cut edges of gypsum wall boards exposed in rough openings for windows and doors. It ensures application of Joint & Seam Filler or FastFlash to dry-cut edges of gypsum wall board is fast and efficient.



SS ThruWall

A stainless steel fabric flashing available in two forms – one for standard use and one for coastal regions. Both versions are bonded on one side to a layer of polymeric fabric.



EMERGENCY WaterStop

Seals and bonds to most building materials and is immediately waterproof. It can be installed in adverse conditions and even underwater to stop active water leaks and eliminate many weather-related construction delays.



Board Seam Filler WB

This acrylic, gun-grade, board-seam filler is easy to use to fill seams in the field, before coating over with R-Guard FastFlash or any PROSOCO R-Guard air barrier coating.

Thru-Wall Flashing

extra-tough, abrasion-resistant facer

This self-adhering membrane offers superior protection against punctures and tears. It's pliable and fits endless configurations across myriad building materials, including OSB, exterior gypsum, plywood, concrete and metals without requiring a primer.

**INSTALLS
FAST + EASY**



SUPER TOUGH



PUNCTURE-RESISTANT



NO PRIMER NEEDED



**6 MONTHS OF
UV PROTECTION**

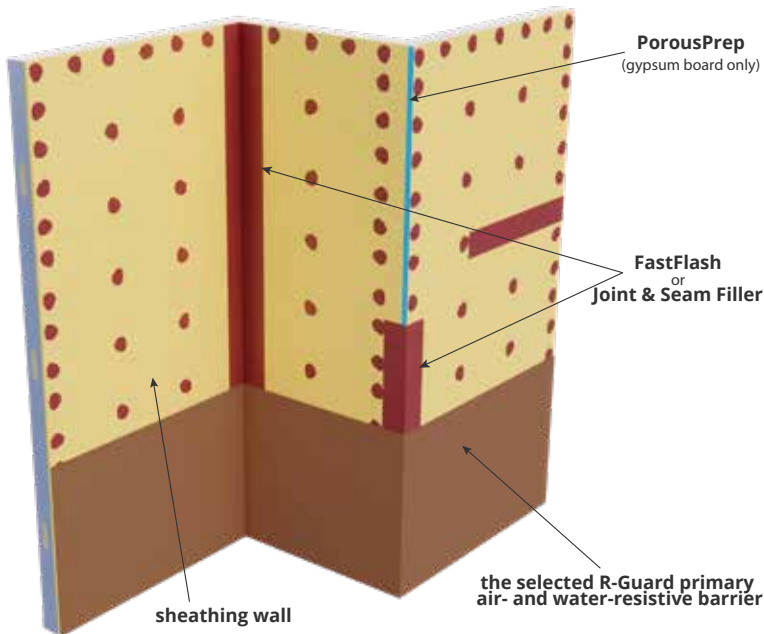


**SAVES ON MATERIAL
& LABOR**

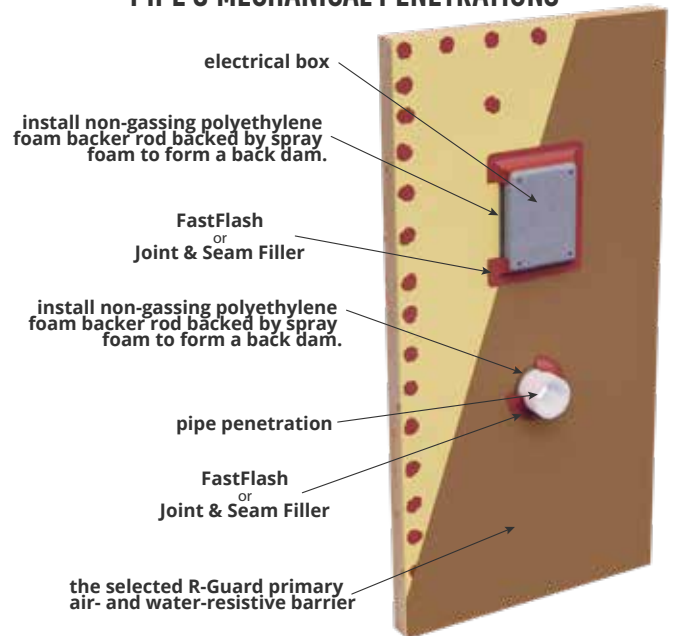


NO ASPHALT

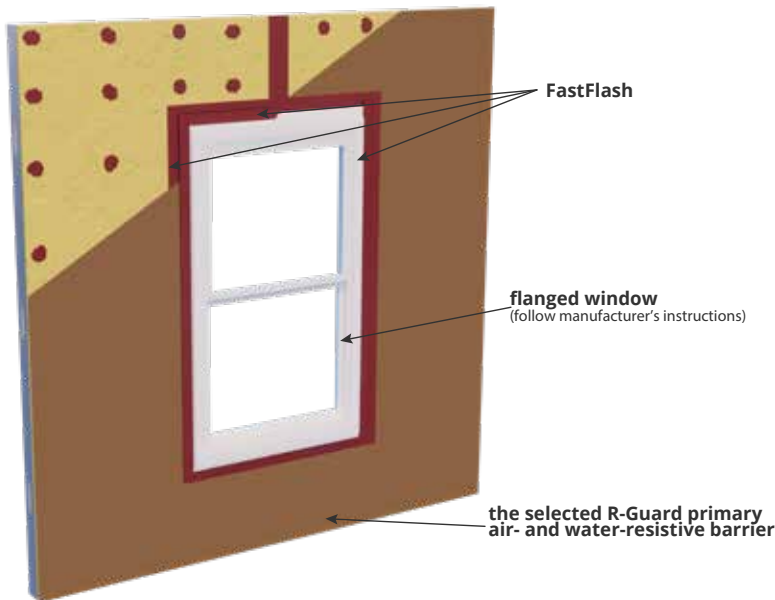
INSIDE/OUTSIDE WALL CORNERS



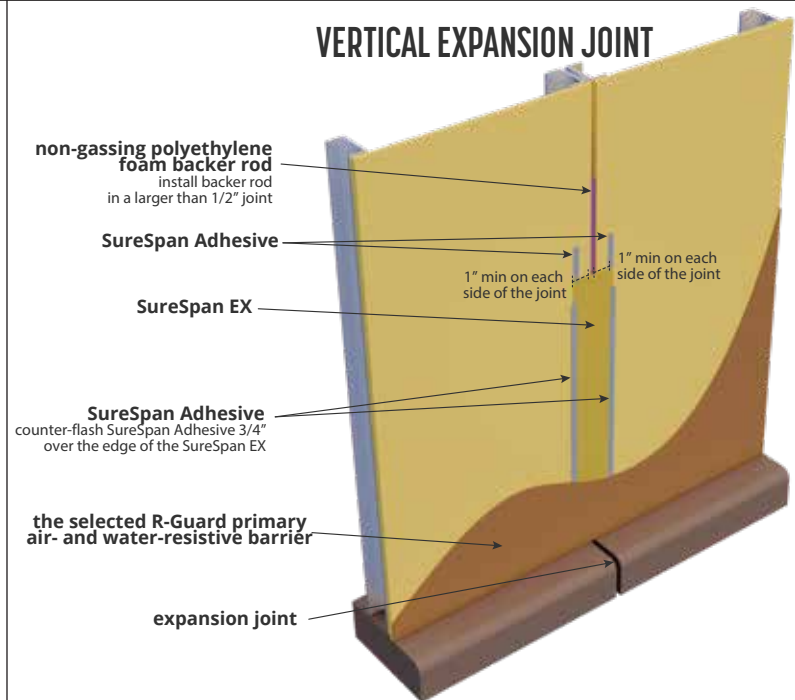
PIPE & MECHANICAL PENETRATIONS



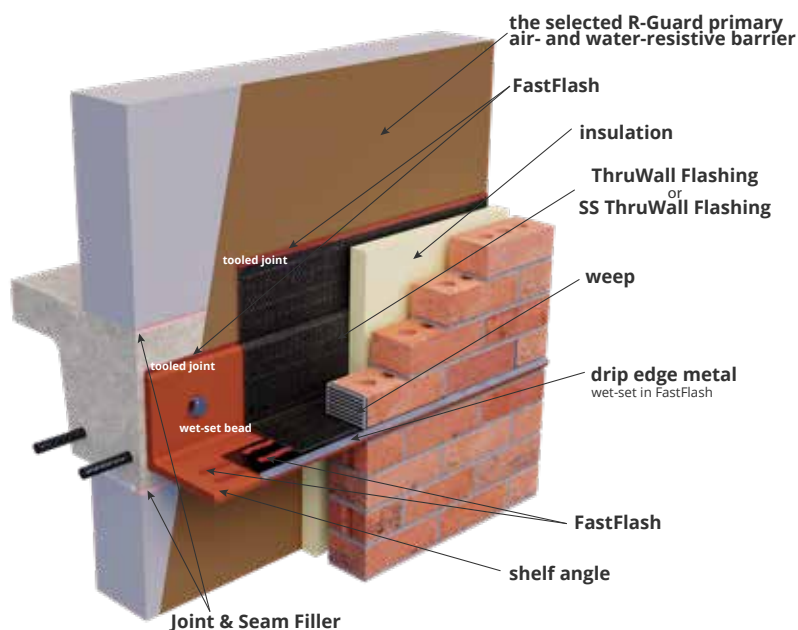
SEALING WINDOW FLANGE



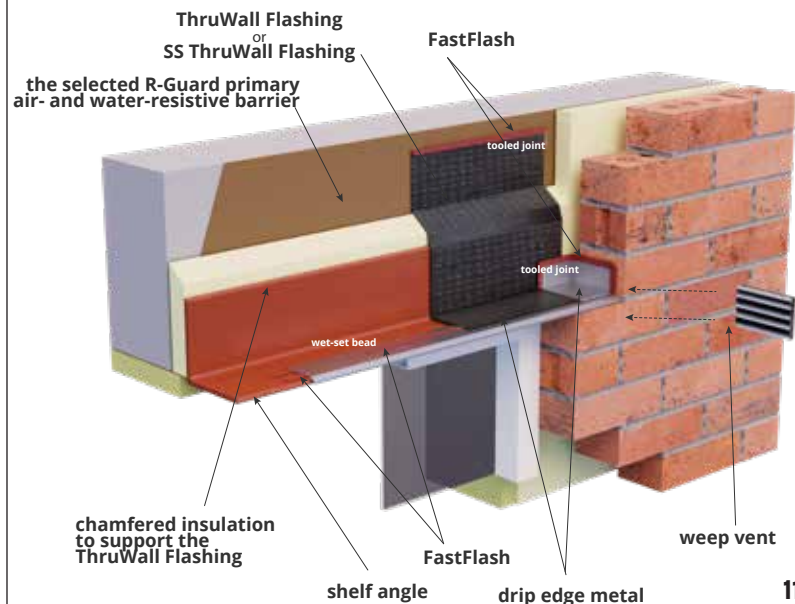
VERTICAL EXPANSION JOINT



SHELF ANGLE WITH TERMINATION BAR



WINDOW HEAD DETAIL





ON-SITE SUPPORT

in-person and on-the-job to make
sure it goes smoothly



FREE TRAINING

for you and your crew



PHONE SUPPORT

live experts answer your questions
800-255-4255

WE ARE
WHERE
YOU ARE



PROSOCO

You. Us. The project.