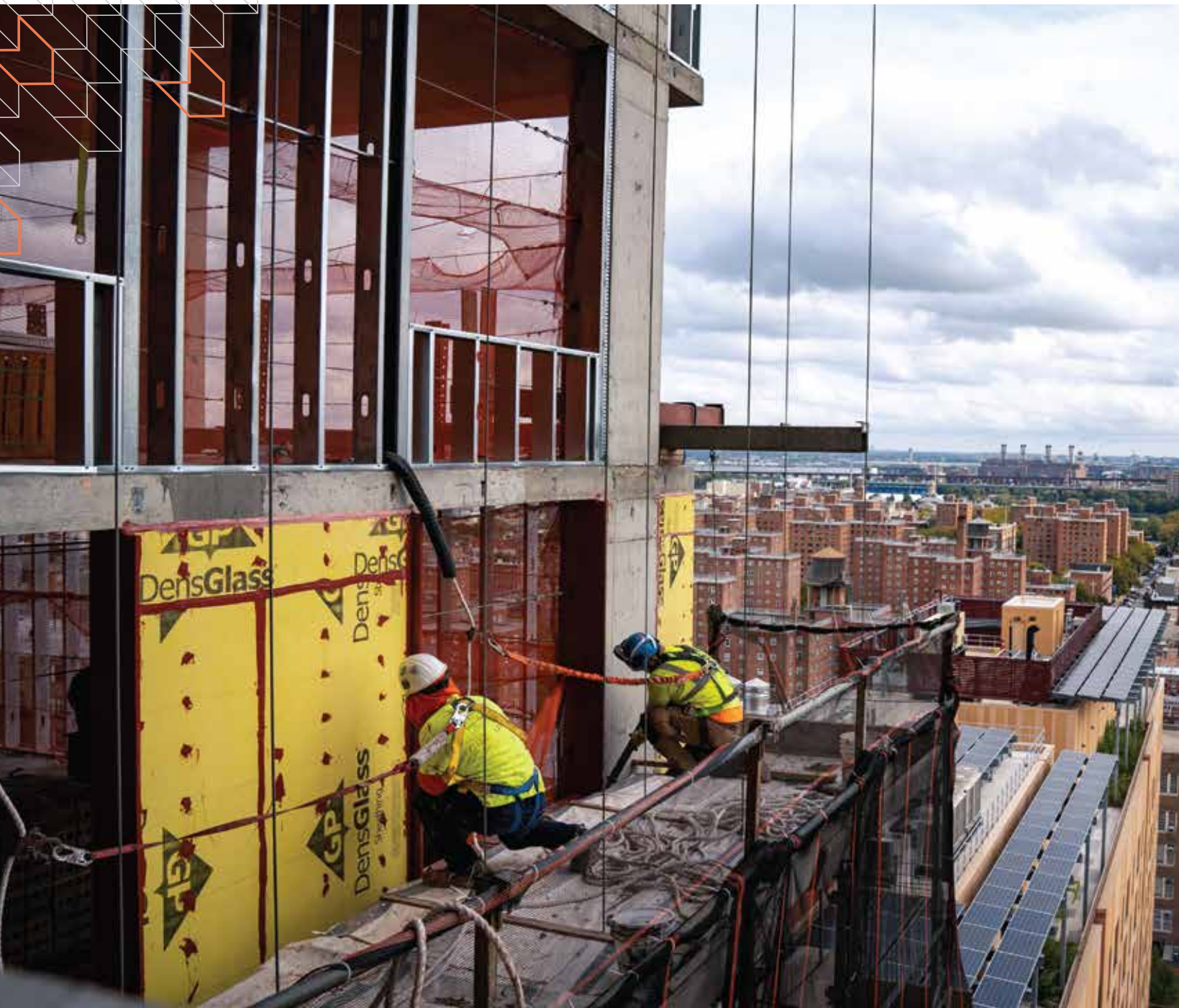
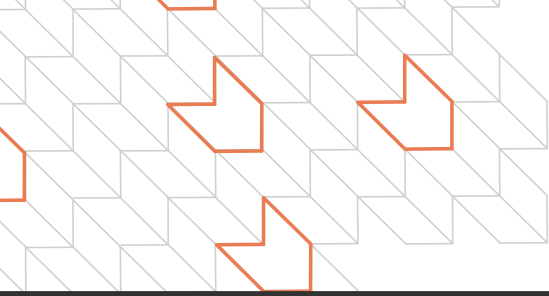
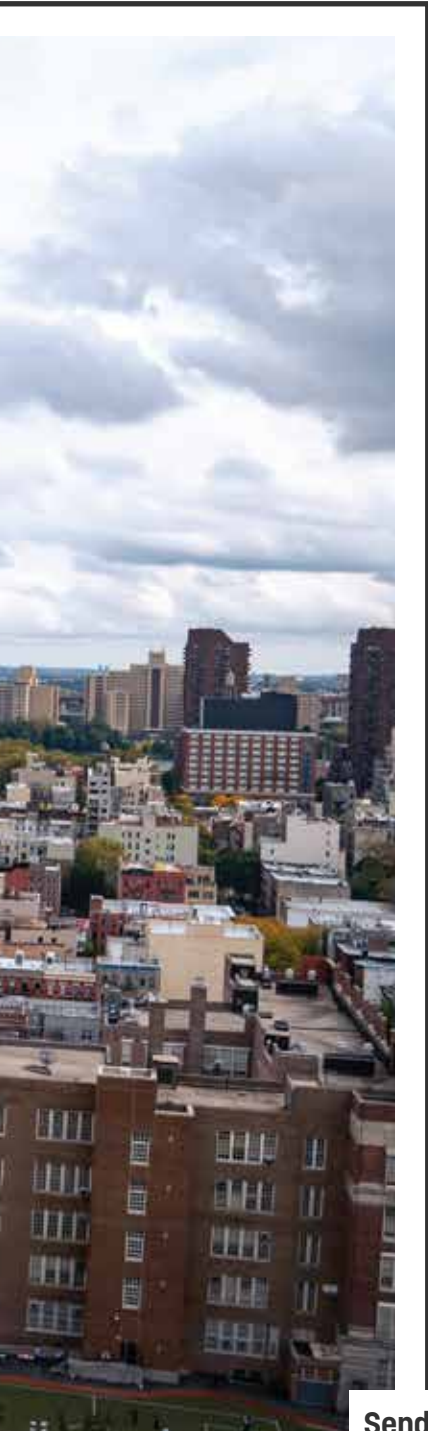




AIR & WATER BARRIERS







Protect with the best.

There's more than one reason why so many contractors only want to use R-Guard fluid-applied air and water barriers. These products were developed *by* contractors. After noticing too many brand new builds that were already leaking, a remediation contractor in the Pacific Northwest wrote down a "wishlist" of properties they would desire out of a flashing material to waterproof rough openings. R-Guard fluid-applied, silyl-terminated polymer products check every box on that list.

Fluid-applied
Vapor-permeable
Reduces steps/saves time
VOC-compliant – minimal odor
Opaque when correct thickness
Easily repaired
Self-seals around fasteners

Bonds to damp surfaces
100% solids to avoid shrinkage
Immediately waterproof
Can be exposed for 12 months
Paintable / compatible
Adheres without a primer



Sendero Verde Apartments Tower A // New York NY
protected with Spray Wrap MVP, FastFlash, Joint & Seam Filler, and Sure Span EX

We don't really have a "type."

There are no limits when it comes to the air-tightening and waterproofing capabilities of our R-Guard system for building envelopes. Our products are lab-tested and field-proven to perform on all building types, from new construction to retrofits, from homes, high-rises, hospitals, and hotels, to high-performing projects achieving net-zero, Living Building Challenge or LEED goals.



Residential

Karuna House private residence // Yamhill County OR // Passive House
FastFlash, Joint & Seam Filler, Cat 5 on plywood



Medical

Lawrence Memorial Hospital West // Lawrence KS
Spray Wrap MVP on the sheathing

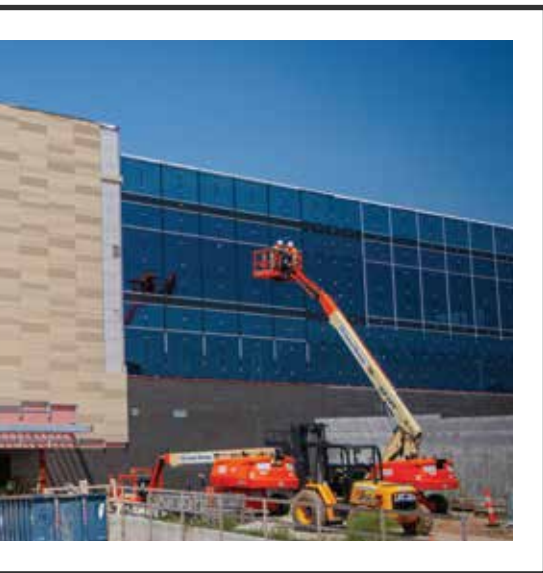
Commercial

Hotel // Bentonville AR
FastFlash, Joint & Seam Filler, & Spray Wrap MVP
steel studs and gypsum sheathing



Green Building

Frick Environmental Center // Pittsburgh PA // Living Building Challenge
FastFlash, Joint & Seam Filler, and Cat 5 on gypsum sheathing

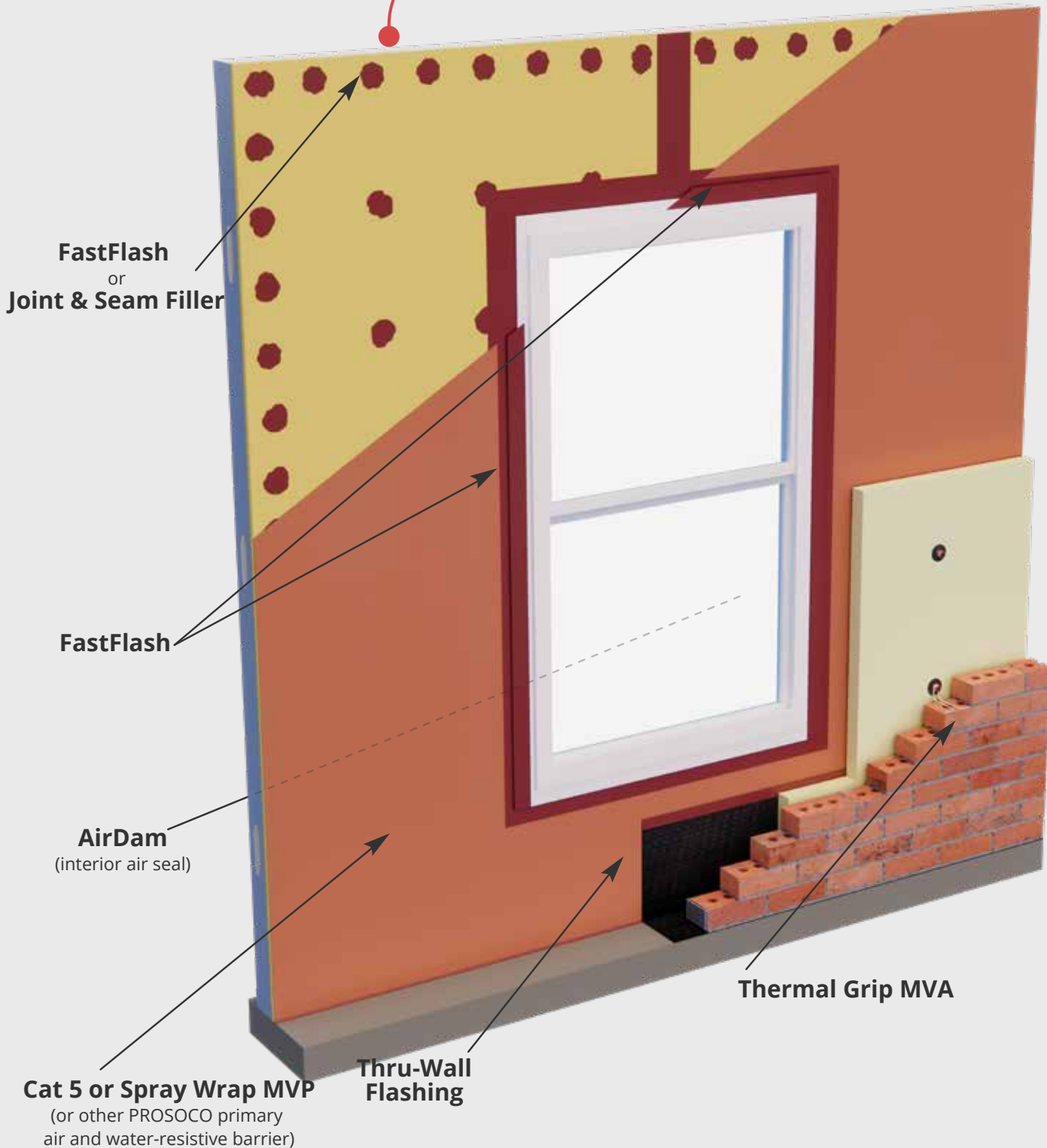


Multifamily Residential

Sendero Verde Tower A // New York City NY
FastFlash, Joint & Seam Filler, SureSpan EX, & Spray Wrap MVP
on steel studs, gypsum sheathing and concrete

Your building is **more than the sum of its individual parts.**

All components in a wall assembly must work together as a system. That's why we recommend (as do most building codes) a systems approach to **protect your entire building.**





FAST & EASY TO USE

Forget peel-and-stick. The R-Guard system is proven to install 34% faster than traditional peel-and-sticks.



DIFFICULT DETAILS MADE EASY

R-Guard's flashing membranes can be painted on, so it is easy to protect even rough, complex, or irregular surfaces.



BONDS TO WET SURFACES

R-Guard can stick to wet surfaces and is immediately waterproof – taking rain out of the equation.



SEAMLESS LAYER OF PROTECTION

The Cat 5 system of products all feature the same chemistry, so they cure into one another to create one continuous, unbroken, fully monolithic layer.



GREEN BUILDING

Can meet the most stringent environmental standards including LEED, Living Building Challenge Red List, CALGreen, WELL, and Fitwel.



PROVEN TO LAST

FastFlash is the only fluid-applied flashing material on the market that's been independently proven to perform for 20 years. Visit prosoco.com/10years.

STEP ONE

Treat transitions, penetrations, and board seams with FastFlash or Joint & Seam Filler. Seal all fasteners, joints, transitions, penetrations, and board seams with FastFlash or Joint & Seam Filler.

STEP TWO

Cover the full rough opening with FastFlash. Use FastFlash on all inside corners, joints and seams, and framing surfaces within the rough opening and the structural wall surrounding the rough opening.

STEP THREE

Seal the entire wall field with Cat 5, Spray Wrap MVP, or VB. Apply the selected PROSOCO primary air and water resistive barrier over the sheathing.

STEP FOUR

Seal interior with AirDam. Use AirDam to tie the window into the larger air and water management system, and to prevent water which may collect in the window frame from entering the conditioned space.



Hotel New Construction // Bentonville AR
Spray Wrap MVP is rolled onto gypsum sheathing.



Bullitt Center // Seattle WA
Cat 5 being applied to gypsum sheathing





Sendero Verde Tower A // New York NY
FastFlash Roller Grade and FastFlash Gun Grade applied to steel stud rough opening



Hotel New Construction // Bentonville AR
FastFlash Gun Grade being applied to the gypsum rough opening

ON THE WALL

FOR HIGH PERFORMANCE BUILDING ENVELOPES

Cat 5

air and waterproof barrier

Cat 5 produces a highly durable, seamless, vapor permable, elastomeric weatherproofing membrane on exterior sheathing, CMU backup walls, and precast concrete. Proven to prevent water and air penetration of the building envelope in conditions ranging from everyday to the 155-mph winds of a Category 5 hurricane.



STRONG DURABLE PROTECTION



BREATHABLE – ALLOWS SUBSTRATE TO DRY



CREATES SEAMLESS MEMBRANE



BONDS TO DAMP SUBSTRATES



INSTALLS IN ANY WEATHER



NO SOLVENTS. NO ISOCYANATES. NO PHTHALATES. VOC COMPLIANT.



Also available in Rain Screen version. Same product, in dark bronze color.



Also available in ICF version. Specifically designed for use on insulated concrete forms.



Olympic & Centennial Hall dormitories // Los Angeles CA
Cat 5 being spray applied onto gypsum sheathing

ON THE WALL

INSTALLS
FAST + EASY

Spray Wrap MVP

air and water-resistive barrier

Spray Wrap MVP is a fluid-applied, vapor-permeable, air and water-resistive barrier that stops air and water leakage in cavity wall, masonry veneer construction, as well as in stucco, EIFS and most other building wall assemblies.



STRONG DURABLE PROTECTION



CAN BE SPRAYED OR ROLLED



REDUCES AIR LEAKS THROUGH ENVELOPE



BREATHABLE – ALLOWS SUBSTRATE TO DRY



SELF-SEALS AROUND FASTENERS



LOW ODOR. NON-TOXIC. VOC COMPLIANT.



Also available in Rain Screen version. Same product, in dark bronze color.

VB (Vapor Barrier)

air & water-resistive barrier and water vapor barrier

A fluid-applied air and water-resistive barrier that stops air and water leakage in cavity wall, masonry veneer construction, as well as in stucco, EIFS and most other building wall assemblies.



STRONG DURABLE PROTECTION



CAN BE SPRAYED OR ROLLED



REDUCES AIR LEAKS THROUGH ENVELOPE



CURES QUICKLY



SELF-SEALS AROUND FASTENERS



LOW ODOR. NON-TOXIC. VOC COMPLIANT.

The devil is in the details.

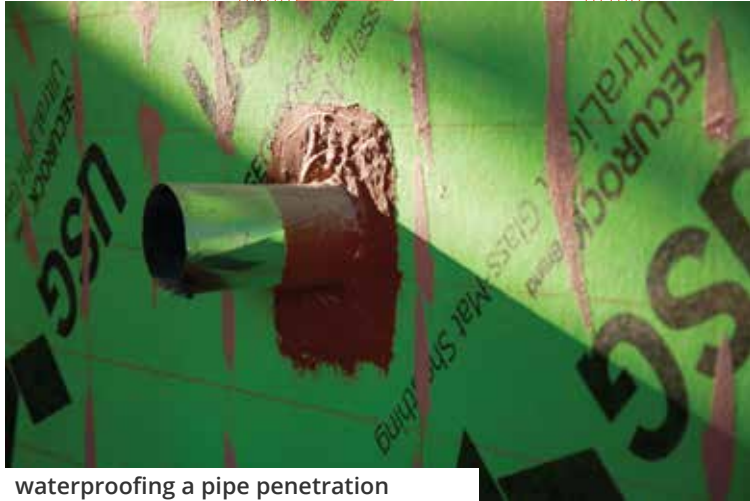
(the air and water is too)

Prosoco's R-Guard system is adept at protecting all the difficult details and complex geometry that construction can throw at you. Circular penetrations, acute angles, even rough, uneven or damaged surfaces can be easily covered with FastFlash. You can gun and spread it or even brush it and FastFlash sticks to almost anything. The R-Guard system is a fail-proof solution to fill in all those gaps and holes, creating a moisture management system that directs water out of the wall assembly.



FastFlash roller grade applied to slab-edge rough opening on a multi-family residential building.

window installation in CMU wall protected with FastFlash



waterproofing a pipe penetration with FastFlash

fastener locations spot protected with FastFlash



arched window protected with FastFlash

existing building window replacement protected with FastFlash





ROUGH OPENINGS & PENETRATIONS

FastFlash

Liquid flashing membrane

Use FastFlash in rough openings, to fill joints and seams, to counter-flash waterproofing and air barrier components in new or existing wall assemblies, to seal around penetrations, or as a transition from roof to wall details. Available in gun or rollergrade.



**STRONG, DURABLE,
WATER-TIGHT SEAL**



**GUN IT, BRUSH IT,
OR ROLL IT**



**STICKS TO WET
SURFACES**



**BREATHABLE – ALLOWS
SUBSTRATE TO DRY**



**BONDS TENACIOUSLY
ALMOST ANYTHING**



**NO SOLVENTS. NO ISOCYANATES.
NO PHTHALATES. VOC COMPLIANT.**

Joint & Seam Filler

Fiber reinforced fill coat and seam treatment

Joint & Seam Filler is designed to fill openings and create transitions where flexible reinforcement is required to bridge larger gaps and provide continuous support of fluid-applied flashing membranes, waterproofing or air barrier components.



**BRIDGE GAPS UP
TO ONE INCH**



**STRONG, DURABLE,
WATER-TIGHT SEAL**



**STICKS TO WET
SURFACES**



**BREATHABLE – ALLOWS
SUBSTRATE TO DRY**



**BONDS TENACIOUSLY
ALMOST ANYTHING**



**NO SOLVENTS. NO ISOCYANATES.
NO PHTHALATES. VOC COMPLIANT.**



ROUGH OPENINGS & PENETRATIONS

AirDam

Air and weather barrier sealant for windows and doors

AirDam is an STP (silyl-terminated polymer) sealant formulated to create a long-lasting, weather-tight seal that prevents moist outside air from entering, and conditioned indoor air from escaping around window and door assemblies.



BRIDGE GAPS UP TO ONE INCH



STRONG, DURABLE, WATER-TIGHT SEAL



STICKS TO WET SURFACES



BREATHABLE – ALLOWS SUBSTRATE TO DRY



BONDS TENACIOUSLY ALMOST ANYTHING



NO SOLVENTS. NO ISOCYANATES. NO PHTHALATES. VOC COMPLIANT.

Building Interior

Air Dam installed as an interior air seal gives your building envelope complete seamless protection from the interior edge of the window all the way out to the exterior. So even if the face seal or the frame of the window leaks, you are protected. Air Dam connects to the FastFlash in the rough opening and directs moisture to the exterior.

FastFlash

AirDam

NON-GASSING, POLYETHYLENE, FOAM BACKER ROD



ACCESSORIES



SureSpan EX

Designed to help create flexible and durable transitions between various types of air and water barriers and the curtainwall, storefront, or window being installed.



SureSpan Adhesive

A gun-grade wet set adhesive specifically formulated to Adhere SureSpan EX. This single-component, Silyl-Terminated-Polymer (STP) is easy to gun, spread and tool.



PorousPrep

Seals the dry, cut edges of gypsum wall boards exposed in rough openings for windows and doors. It ensures application of Joint & Seam Filler or FastFlash to dry-cut edges of gypsum wall board is fast and efficient.



SS ThruWall

A stainless steel fabric flashing available in two forms – one for standard use and one for coastal regions. Both versions are bonded on one side to a layer of polymeric fabric.



EMERGENCY WaterStop

Seals and bonds to most building materials and is immediately waterproof. It can be installed in adverse conditions and even underwater to stop active water leaks and eliminate many weather-related construction delays.



Board Seam Filler WB

This acrylic, gun-grade, board-seam filler is easy to use to fill seams in the field, before coating over with R-Guard FastFlash or any PROSOCO R-Guard air barrier coating.

INSTALLS FAST + EASY

Thru-Wall Flashing

extra-tough, abrasion-resistant facer

This self-adhering membrane offers superior protection against punctures and tears. It's pliable and fits endless configurations across myriad building materials, including OSB, exterior gypsum, plywood, concrete and metals without requiring a primer.



SUPER TOUGH



PUNCTURE RESISTANT



NO PRIMER NEEDED



6 MONTHS OF UV PROTECTION



SAVES ON MATERIAL & LABOR



NO ASPHALT

Which R-Guard field coating is right for me?

Primary field coatings cover the majority of the wall, everything between the penetrations and transitions that are finished with R-Guard detailing products such as FastFlash. The four variations of primary field coatings are: Cat 5, Cat 5 Rain Screen, VB (Vapor Barrier), Spay Wrap MVP and Spray Wrap Rain Screen. Each is formulated to fit the needs of specific projects. Which is best for your project?

	CAT 5	CAT 5 RAIN SCREEN	SPRAY WRAP MVP	SPRAY WRAP RAIN SCREEN	VB
Can be applied with airless sprayer	✓	✓	✓	✓	✓
Can be applied to damp surfaces	✓	✓			
Waterproof	✓	✓			
Water-resistant			✓	✓	✓
Vapor permeable	✓	✓	✓	✓	



Olathe Health Education Center // Olathe, KS
VB applied to gypsum sheathing

Air barriers for new construction



UCLA, Los Angeles CA

R-Guard works on buildings of all types, big or small, old or new. Thousands of new builds have relied on the R-Guard system because it future-proofs the entire wall assembly from a slew of problems that can commonly arise from water intrusion.

Vapor management is key. R-Guard products are breathable, so they keep water out of the assembly, while also allowing moisture in the form of vapor to escape the assembly when water does inevitably get in.

At UCLA, R-Guard Cat 5 was trusted to protect approximately 700,000 square feet of air barriers on two student housing complexes. Cat 5 produces a highly durable, seamless weatherproofing membrane over the field of the wall.

The installation went much more quickly than anticipated due to the ability to spray on Cat 5 instead of roll it.



Olympic & Centennial Hall dormitories // Los Angeles CA
protected with FastFlash, SureSpan EX, & Cat 5

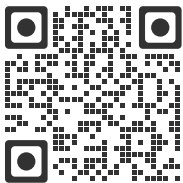
Air barriers for existing construction

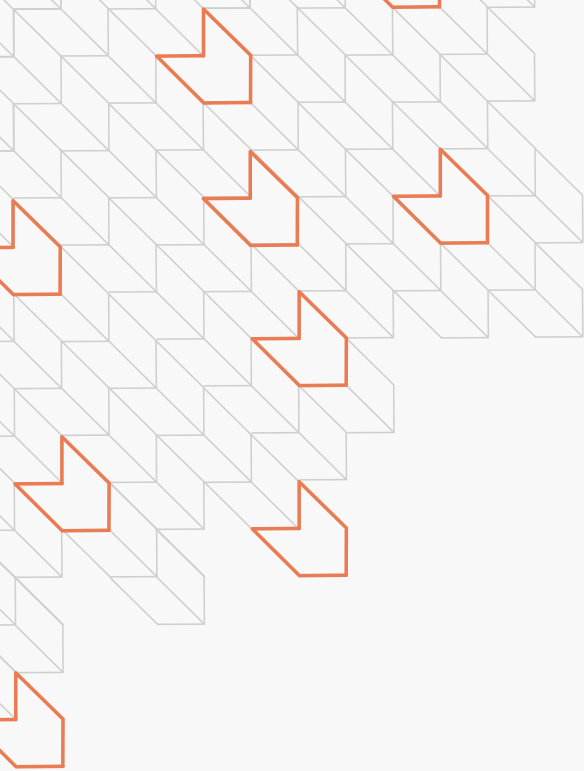
Magnolia Elementary, Seattle WA

R-Guard FastFlash is perfect for restoration projects and deep-energy retrofits. It's easy to apply around rough openings of doors and windows to repair leaky building envelopes.

Whether you're installing an entirely new air barrier where there once was none, or replacing windows, FastFlash is a great idea to weatherproof and air-tighten the area where air leaks are most likely to occur - around the window and door rough openings.

Scan the QR code below for step-by-step instructions on the right way to replace windows.





ALLEY

Architectural support

Help with project requirements, product specifications, submittals, & documentation.



BEN

Laboratory

Customized testing and problem-solving equal solutions for your real-world conditions.



We've got great chemistry.

We strive to provide the best specialty construction chemicals and products on the market, but we also know this business is about people. That's why we dedicate our human resources and services to make your job easier. Our nationwide network of sales representatives is here to do whatever we can to help solve your job-site problems.

SADIE
Customer Care

We're real live people who answer the phones. Really. We're here M-F, 8a-5p, CST, at 1-800-255-4255.



CHRIS
Field Support

We come to you to support your projects when and where you need us.



Negative side air barriers

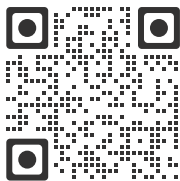
When you can't touch a building's exterior masonry due to its historic nature, or there's just no room to access the exterior, there is still a way to install an air barrier – from the inside.

In what is called a negative-side or reverse-side air barrier application, interior drywall is removed so applicators can reach the back side of the masonry exterior to apply an air barrier.

Because acrylic-based flashing materials can end up turning soft and blistering in this application, they are not recommended. Instead, we recommend our silyl-terminated polymer-based Cat 5, FastFlash, and Air Dam. Those products are hardy enough that when they cures, they block moisture coming into the building through the exterior cladding.

Cat 5 is a fluid-applied, vapor-permeable air barrier that produces a highly durable, seamless, elastomeric weatherproofing membrane on brick, CMU backup walls, precast concrete or exterior sheathing. FastFlash is a fluid-applied detailing membrane for rough opening and transitions. Air Dam is an interior sealant for windows and doors.

Learn more about how this process works.





Anchoring Systems

Secure masonry buildings with restoration anchors and wall ties.

Hard Surface Care

Clean and protect interior and exterior masonry, architectural metal and more.

Air & Water Barriers

Control the leakage of air and water for maximum building envelope performance.



Where building meets science

We have invested years and years of resources into testing and developing the best products on the market to improve the performance and durability of our built environment. Here's a look at where we can help you extend the life of your building (it's not just masonry cleaning!).



Water Repellents

Protect masonry and increase its service life by locking water out.

Concrete Flooring

Optimize floor performance and aesthetics with hardeners, decorative colors, maintenance cleaners and more.

Hardscapes & Pavers

Enhance the appearance, performance and life of exterior hard surfaces.

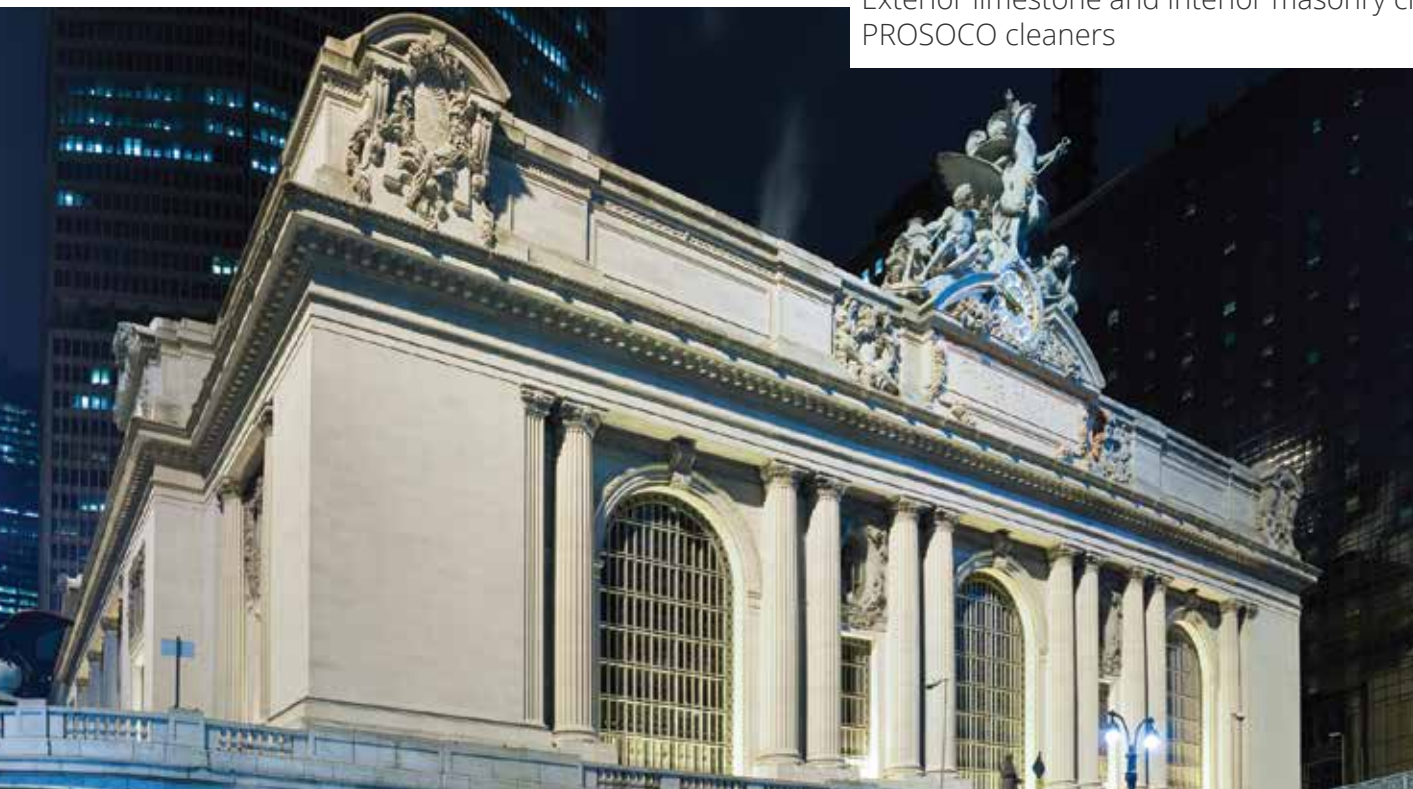


US Capitol, Washington, D.C.

Exterior masonry cleaned and protected with PROSOCO products

We've been around awhile.

Since 1939, PROSOCO has been involved some of the world's most recognizable and highest-performing buildings.

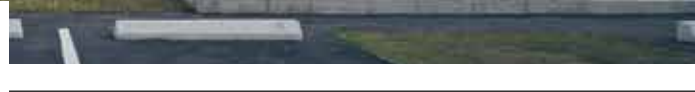


Grand Central Station, New York, NY

Exterior limestone and interior masonry cleaned with PROSOCO cleaners



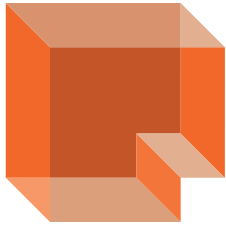
R.W. Kern Center, Hampshire College, Amherst, MA
Building envelope protected, concrete flooring finished and exterior masonry protected with PROSOCO products



Wrigley Building, Chicago, IL

Exterior terracotta cleaned with PROSOCO cleaners and facade secured with PROSOCO anchors





PROSOCO

You. Us. The project.



Printed on paper certified by the Forest Stewardship Council®.
This paper is made of material from well-managed, FSC®-certified forests, and other controlled sources.

© 2020 PROSOCO INC. 10262020 // CUSTOMER CARE 800-255-4255 // PROSOCO.COM