



CTP STONE-GRIP TIE 6000-1 INSTALLATION INSTRUCTIONS

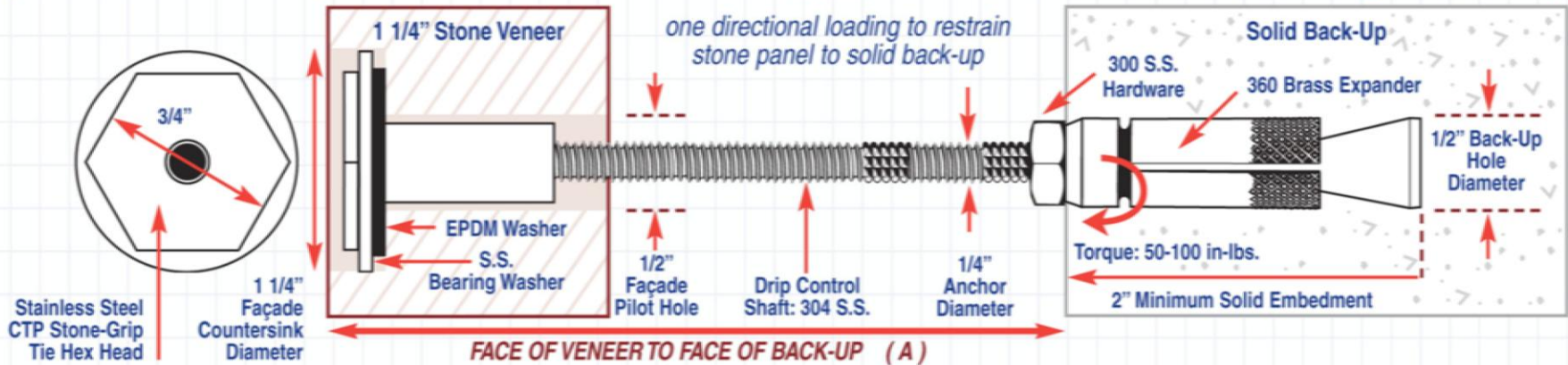


CTP 6000-1 SERIES ANCHOR

INSTALLATION PROCEDURE AND CRITERIA TO RESTRAIN STONE PANEL TO SOLID BACK-UP

Requires 3/4" Socket and CTP 501 Setting Tool

Type 1 : Wind load restraint for one direction loading to solid back-up.



1. Locate anchor placement per specified location.
2. Drill 1/2" diameter hole thru the stone with a suitable "stone drilling" drill bit, without percussion.
3. Using a suitable 1/2" diameter quality carbide, drill a 1/2" hole into the solid back-up, on center with the 1/2" façade hole, 2" deeper then the "A" dimension as measured from the face of the stone. Blow out drill fines.
4. On center with the 1/2" drilled hole, drill a counter-bore 1-1/8" minimum diameter hole into the stone façade 3/8" - 1/2" deep from the face of the stone on center with the previous drilled holes.
5. Assemble anchor shaft without head to the CTP 501 setting tool; slide assembly through the drilled holes until the expansion anchor bottoms in the concrete drilled hole; tighten by turning clockwise until 50-100 in-lbs of torque is reached; remove setting tool.
6. Attach CTP Stone-Grip Hex Tie Head and washer with EPDM washer to the anchor shaft using an appropriate hex socket, hand tighten clockwise until the washer and head bottom out into the counter-bore, tighten 20 – 25 in-lbs; remove tool.
7. Installation complete, patch or conceal anchorage per specification requirements.

CATALOG #	A
CTP-6034	1-5/8" – 2-7/8"
CTP-6040	2-1/8" – 3-3/8"
CTP-6044	2-5/8" – 3-7/8"
CTP-6054	3-5/8" – 4-7/8"
CTP-6064	4-5/8" – 5-7/8"

OTHER LENGTHS AVAILABLE UPON REQUEST

7974 W. Orchard Dr. * Michigan City, IN 46360 * Phone:(219)878-1427*Fax: (219)874-3626

Email: stevectp@comcast.net * www.ctpanchors.com