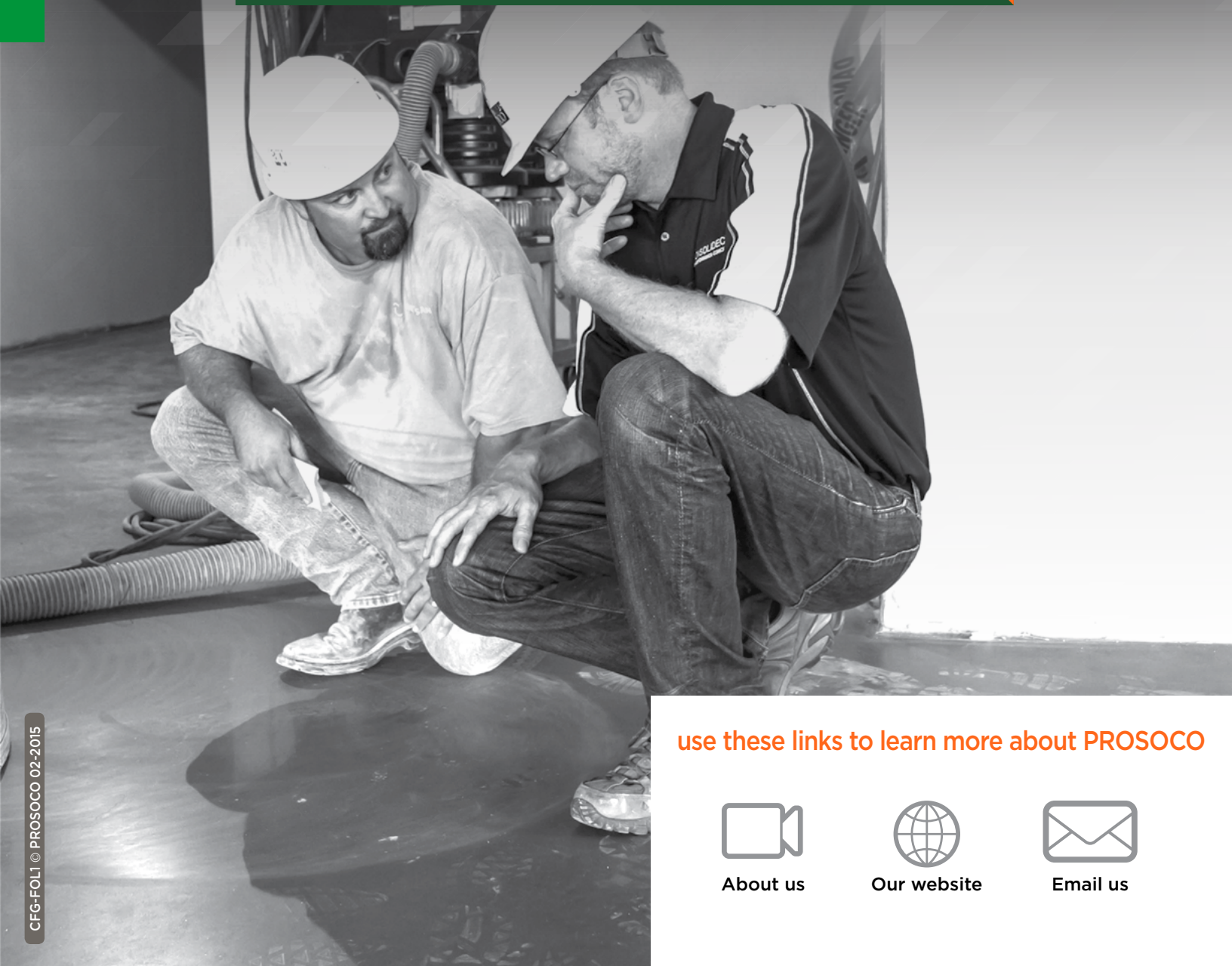




PROSOCO®

Consolideck®

CONCRETE FLOORING PRODUCTS



use these links to learn more about PROSOCO



About us



Our website



Email us



the ultimate solution for sustainable floors

The selection of conventional, remedial materials on the market to coat, repair and resurface under-performing concrete is falling short. Even with frequent maintenance, many materials available today have an even shorter service life than the underlying concrete.

There's another option. A better, more sustainable option.

Consolideck® products reduce maintenance while improving the appearance and long-term performance of new and existing concrete floors.

Consolideck® lithium silicates and protective treatments penetrate and react with concrete to improve the performance and resist staining of high-traffic floors.

GemTone Stains and ColorHard colors transform dull gray concrete into highly decorative, low-maintenance finished concrete flooring.

Choose Consolideck® to reduce your environmental footprint

We're not just talking about service life when we say our products are sustainable. In addition to sustaining your concrete floors, we're proud that our Consolideck® products also sustain the environment.

By design, many of our formulations surpass the highest green standards in contemporary design and construction. It's all part of our broader mission to make products that maximize sustainability while leaving a minimal impact on the natural environment. But don't just take our word for it.

Consider the **Living Building Challenge Red List**.

Eight Consolideck® products have been confirmed to contain zero ingredients on the list of more than 300 substances often found in common building materials that are proven to be harmful to people and the environment. Complying with the LBC Red List was just one requirement that led to Consolideck® products being used on the Bullitt Center, Seattle's famed net-zero energy office building that's been dubbed the "greenest commercial building in the world."

Many Consolideck® products have also been third-party lab-tested to be certified by **SCS Global Services** for indoor air quality performance. The SCS Indoor Advantage Gold

icon signifies compliance with the most rigorous indoor air quality emissions standards in North America. Products with this seal also meet the health-based VOC chemical emissions requirements for building products defined by the CA Special Environmental Section 01350 specification. Additionally, all GemTone Stain and ColorHard colors conform to the California Collaborative for High Performance Schools.



Multiple Consolideck® floor finishes are registered with **NSF International's Nonfood Compounds Program**. This registration guarantees that these products meet appropriate food safety regulations.



As a founding sponsor of the **Health Product Declaration Collaborative**, PROSOCO is pleased to say several Consolideck® products meet these standards of reporting product content, emissions and health information.



PROSOCO is also a member of the **U.S. Green Building Council**, which qualifies products that count toward LEED credits. Several Consolideck® products are officially LEED-contributing and LEED v4 ready.



Prepare

Effective surface preparation helps Consolideck® hardeners and protective treatments penetrate deeply and provide optimal performance.

Drawing on PROSOCO's long history of developing specialty cleaners and stain removers, Consolideck® surface prep cleaners improve the appearance and performance of your concrete floor.

SafEtch®

Safely cleans and preps concrete for application of hardener/densifiers and other protective treatments.

Wax & Cure Remover

Removes waxes and acrylics to prep concrete floors for hardening/densifying and other treatments.

Cure & Seal Remover

Quickly removes the toughest high-solids cure and seals from floors, patios, driveways and other concrete flatwork.

Cleaner/Degreaser

Cuts grease and oil, and cleans concrete floors without harm.

Oil & Grease Stain Remover

Instant poultice cleaner draws embedded oil and grease stains out of concrete.

Concrete Floor Restorer

Rids old, dirty concrete floors of common stains and soiling.

Grind-N-Fill

Mixes with concrete dust during metal grinding to fill small holes and gaps in concrete floors.



Oil stain removed from concrete with Consolideck® Oil & Grease Stain Remover

Harden/Dustproof

Hardening and dustproofing are just two advantages of using Consolideck® LS® and Consolideck® LS/CS®. They contain highly reactive silicates, which ensure better hardening without the aggressive scrubbing and rinsing needed with conventional floor hardeners. And best of all — no more dusting!



LS®

Easy-to-apply premium lithium silicate treatment extends concrete service-life by improving durability.

LS/CS®

Easy-to-apply, blended, penetrating silicate treatment extends concrete service-life by improving durability and eliminating dusting.

Decorate

Consolideck® color systems for concrete floors let you bring design and color palette to concrete flatwork inside and out, limited only by imagination. Turn floors, new or old, into gleaming, gem-like, yet slip-resistant surfaces — even concrete currently topped by other coverings.

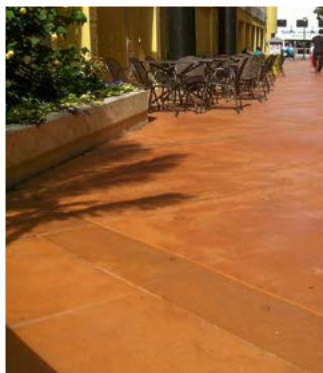
GemTone Stain

Vibrant, premeasured liquid colors transform dull gray concrete into a decorative, low-maintenance finished concrete flooring option.



ColorHard

Premeasured liquid color concentrate is formulated to mix with Consolideck® LS® or LS/CS® to produce a ready-to-use solution to achieve colored, hardened and densified horizontal concrete inside or out in one easy step.



Protect

Consolideck® includes the best performing, longest-lasting protective treatments for concrete flooring.

LSGuard®

High-gloss protective treatment seals and protects interior, horizontal concrete, maximizing light reflectiveness and eliminating the need for floor waxes.



PolishGuard

High-luster interior protective treatment specifically formulated for superior chemical stain resistance enhances color and resists etching from acidic spills.

SLX100® Water & Oil Repellent

Deep penetrating protective treatment from water, oil, food stains and more.

SLX100® Water & Oil Repellent <350

Low-VOC version of the popular deep penetrating water and oil barrier.

GuardEXT

High-luster protective treatment for exterior concrete that enhances color while improving stain resistance.



Concrete Protector

Water-based, VOC-compliant penetrating treatment protects finished concrete floors from water, oil and food stains while allowing concrete to retain its natural color and texture.

- Prep cleaners
- Hardener/Densifiers
- Color — exterior & interior
- Protective treatments
- Maintenance cleaners



PROSOCO

prosoco.com • 800-255-4255

Maintain

Concrete floors are low-maintenance, but like anything that gets traffic, they are not “no-maintenance.”

These specialized blends of degreasers and detergents remove most common soiling found on concrete

floors. They are ideal for concrete floors everywhere, from steel-troweled warehouse and manufacturing plant floors to burnished and highly polished floors in schools, stores, hospitals, restaurants and more. Regular cleaning with DAILY Klean and LSKlean cleaners ensures a long-lasting quality appearance and performance for all indoor concrete flatwork.



DailyKlean

Safe, economic daily cleaner for all finished concrete floors, industrial to aesthetic.

LSKlean

Lithium silicate cleaner concentrate keeps concrete floors clean and looking and performing their best.

DailyKlean ULTRA 15* and ULTRA 30*

Safe, economical daily cleaner concentrate for autoscrubbing all finished concrete floors, industrial to aesthetic.

LSKlean ULTRA 15* and ULTRA 30*

Lithium silicate cleaner concentrate designed for use with automatic floor scrubbers.

*These four products are designed specifically for autoscrubbers. ULTRA 15 is formulated to use one 4-oz PAX in a 12- to 18-gallon autoscrubber. ULTRA 30 is formulated to use one 4-oz PAX in a 25- to 35-gallon autoscrubber.

Additional Consolideck® Protective Treatments

Color Enhancer WB

Water-based formula enhances color on decorative floors, walkways and pavers. Treated surfaces let water vapor out without letting water in.

DuraSheen

A non-yellowing cure and seal compound that provides a hard, glossy finish, delivering stain resistance and water- and dust-proofing performance.

244 Salt Screen Additive

Mixes with Consolideck® LS® or LS/CS® to achieve a more durable, hardened concrete floor along with protection from salt intrusion, all with one easy application.

Saltguard

Offers long-lasting protection against water and salt attack for concrete floors. Ideal for new concrete.

SaltGuard® WB

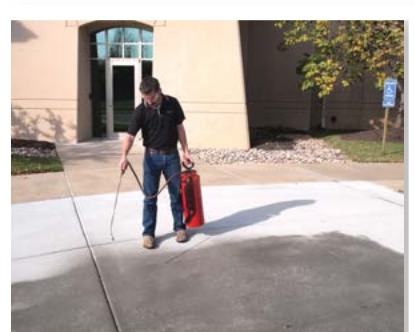
Water-based protection against water and salt attack for concrete.

SingleStep

Easy-to-apply cure and seal protects horizontal concrete against costly water invasion and salt attack.

SL100 Water Repellent

Water repellent provides maximum penetration, unbeatable coverage rates and invisible, breathable protection for concrete.



- Prep cleaners
- Hardener/Densifiers
- Color — exterior & interior
- Protective treatments
- Maintenance cleaners



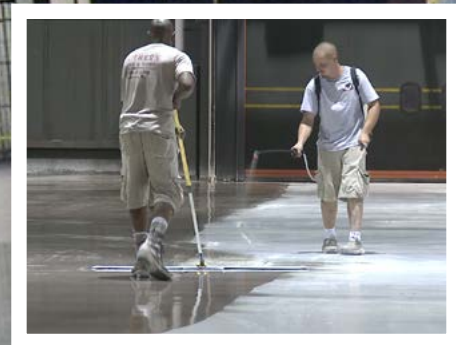
PROSOCO

prosoco.com • 800-255-4255

Dustproofing concrete floors

Stop concrete dusting in its tracks with Consolideck® LS® and LS/CS®. Dusting — the continuous creation of a fine powder of calcium carbonate — can get everywhere, on your floors, inventory and equipment. And no matter how much you try to sweep and clean it away, you can never get rid of it. So consider it an added bonus and convenience that when you choose Consolideck® silicate treatments, you'll see:

- Improved resistance to stains and abrasions
- Durable, hardened and densified concrete
- Longer service life of your floors
- Easy application and maintenance
- No more dusting



Retrofitting polished concrete floors

You don't need brand new concrete floors to make them sparkle like new. Our Consolideck® line of products — ranging from prep cleaners, hardeners, decorative stains and protective treatments, are designed to make old floors look good as new. With our complete line of products, you'll get:

- Concrete flooring products that are easy to use and maintain
- Unparalleled training and support
- Sustainable products for long-lasting performance



Don't go at it alone. We're here to help!
Call the Consolideck® Hotline today at **866-363-4567**



PROSOCO®

Concrete flooring products



About us



Email us your
questions



Search our
website



PROSOCO

3741 Greenway Circle • Lawrence, KS 66046
800 255 4255