



Pallet Tag Program Laboratory Report

Shaw Brick – Concrete Brick and Block Lantz, Nova Scotia, Canada



Project No. 1902-01 PTP

Prepared For:



Prepared By:

J. Lucas Comadoll

J. Lucas Comadoll
Project Testing Technician
AMT Laboratories

April 2019



LABORATORY REPORT

AMT Laboratories • 3741 Greenway Circle • Lawrence, Kansas 66046 • (888) 376-3600

FOR: Jamie Aucoin, Shaw Brick
cc: Tom Lane, PROSOCO, Inc.
Jake Boyer, PROSOCO, Inc.
Al Morris, PROSOCO, Inc.

SUBJECT: Shaw Brick – Concrete Brick and Block
Lantz, Nova Scotia, Canada
Pallet Tag Evaluation

DATE: April 8, 2019
PROJECT: 1902-01 PTP

SAMPLES SUBMITTED:

Sample Type	Name	Color	Size
(6) Concrete Brick	"Dutchess Aydon"	Dark Gray	13.5" x 7.5" x 4" (2) 13.5" x 11.5" x 4" (1) 18" x 7.5" x 4" (1) 18" x 11.5" x 4" (1) 9" x 7.5" x 4" (1)
(6) Concrete Brick	"Contessa Oxford"	Light Brown	16" x 6" x 4"
(6) Architectural Block	"Split Ashlar Charcoal"	Gray	15" x 7.5" x 4"
(6) Architectural Block	"Split Ashlar Natural"	Light Brown	15" x 7.5" x 4"
(6) Concrete Block	"Fortress Stone – Sahara"	Green	15" x 7.5" x 4"
(6) Concrete Block	"Fortress Stone – Ivory"	Buff	15" x 7.5" x 4"
(6) Concrete Block	"Linear Smooth Onyx"	Black	15" x 3.5" x 3.5"
(6) Concrete Block	"Linear Smooth Alpine White"	White	15" x 3.5" x 3.5"

SUBMITTED BY: Jamie Aucoin
Shaw Brick
1101 Hwy #2, P.O. Box 2130
Lantz, NS, B2S 3G4

PURPOSE OF TEST:

- To determine the most appropriate PROSOCO, Inc. new construction cleaner(s) for the submitted samples.
- To determine the most appropriate PROSOCO, Inc. water repellent(s) for the submitted samples.
- To determine the effectiveness of appropriate PROSOCO, Inc. products in preventing the penetration of, and simplifying the removal of, graffiti staining on the submitted samples.

PRODUCTS EVALUATED:

New Construction Cleaning	Dilution:
Sure Klean® Custom Masonry Cleaner	1:4; 1:6
Sure Klean® Light Duty Concrete Cleaner	1:2; 1:3

Water Repellency	Dilution:
Sure Klean® Weather Seal Siloxane WB Concentrate	1:9
Sure Klean® Weather Seal Blok-Guard® & Graffiti Control II	N/A*
Sure Klean® Weather Seal Blok-Guard® & Graffiti Control Ultra	N/A*

Graffiti Resistance	Dilution:
Sure Klean® Weather Seal Blok-Guard® & Graffiti Control II	N/A*
Sure Klean® Weather Seal Blok-Guard® & Graffiti Control Ultra	N/A*

Graffiti Removal	Dilution:
Defacer Eraser® Graffiti Remover	N/A*
Enviro Klean® SafStrip® 8	N/A*

***NOTE: Per the product data sheet instructions, only use the product in concentrate. Do not dilute.**

TEST METHODS: New Construction Cleaning

Sure Klean® Custom Masonry Cleaner and Sure Klean® Light Duty Concrete Cleaner were evaluated to determine the optimal concentration of cleaner which leaves the external surface looking most like the natural through-body color of the CMU.

Color uniformity was evaluated by comparing aggregate exposure and surface pigment alteration/removal of each cleaned surface compared to the natural through-body color of the CMU.

Aggregate Exposure is the visual examination comparing aggregate exposure of the interior, through-body section of the CMU to surfaces cleaned with selected product(s) at given dilutions.

Surface Pigment Alteration/Removal is the visual examination comparing the pigmentation of the interior, through-body section of the CMU to surfaces cleaned with selected product(s) at given dilutions.

The following is the scale used for reporting results of both categories:

- 0 – **No change** compared to through-body
- 1 – **Slight change** compared to through-body
- 2 – **Moderate change** compared to through-body
- 3 – **Significant change** compared to through-body

NOTE: When cleaning integrally colored CMUs.

Integrally colored concrete masonry units (CMUs) frequently have high amounts of pigments concentrated on the surface of the cured concrete unit. Variation of surface pigment concentrations from one CMU to the next creates a blotchy appearance in the completed wall. Allowed to remain on the surface of the CMU, the weakly bound pigment will weather and streak, further detracting from the appearance of the completed CMU wall.

In addition to removing excess mortar and construction related soiling, the goal of any cleaning operation undertaken on an integrally colored CMU should include removal of unnaturally high concentrations of surface pigment. By revealing the natural through-body color on the integrally colored unit, the overall color uniformity and weathering resistance of the completed CMU wall is improved.

Cleaning Procedure:

1. Pre-wet the surface and apply diluted cleaning solution according to PROSOCO, Inc. Product Data Sheet.
2. Allow for an appropriate dwell time:
Custom Masonry Cleaner3 minutes
Light Duty Concrete Cleaner3 minutes
3. Reapply cleaning solution; do not let cleaner dry into masonry.
4. Rinse thoroughly with plenty of fresh water.*
5. Allow the sample to dry for at least 18 hours and visually examine.
6. Break the sample and compare the through-body surfaces to the cleaned surfaces for the best match.

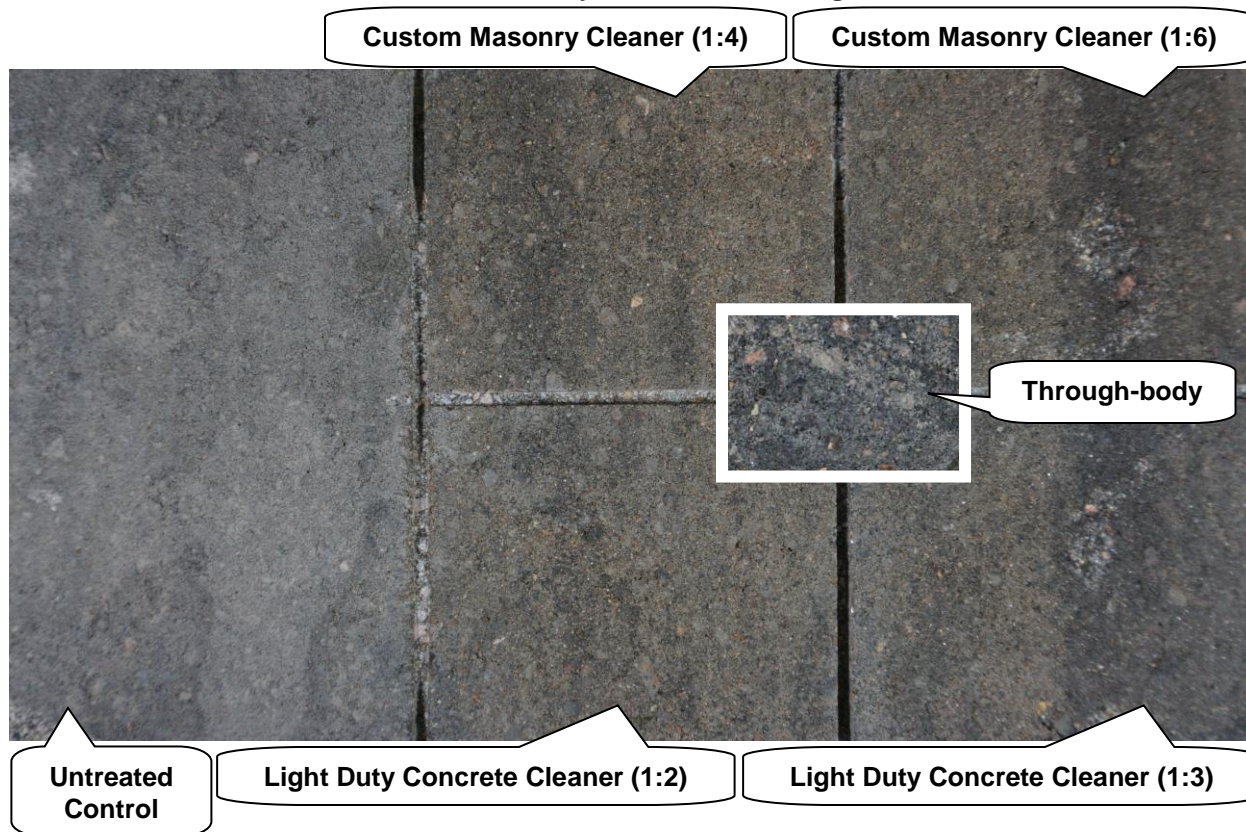
***Rinsing Equipment** – Masonry washing equipment generating approximately 700-800 psi with a water flow rate of 8 gallons per minute delivered through a 45 degree fan spray tip was used for rinsing.

TEST RESULTS AND PHOTOGRAPHS: New Construction Cleaning / Color Uniformity

Scale used for reporting results of both categories:
0 – No change compared to through-body
1 – Slight change compared to through-body
2 – Moderate change compared to through-body
3 – Significant change compared to through-body

Substrate: Concrete Brick	Name: "Dutchess Aydon"		
Product	Dilution	Aggregate Exposure	Surface Pigment Alteration/Removal
Custom Masonry Cleaner	1:4	0	0
Custom Masonry Cleaner	1:6	0	0
Light Duty Concrete Cleaner	1:2	0	0
Light Duty Concrete Cleaner	1:3	0	0

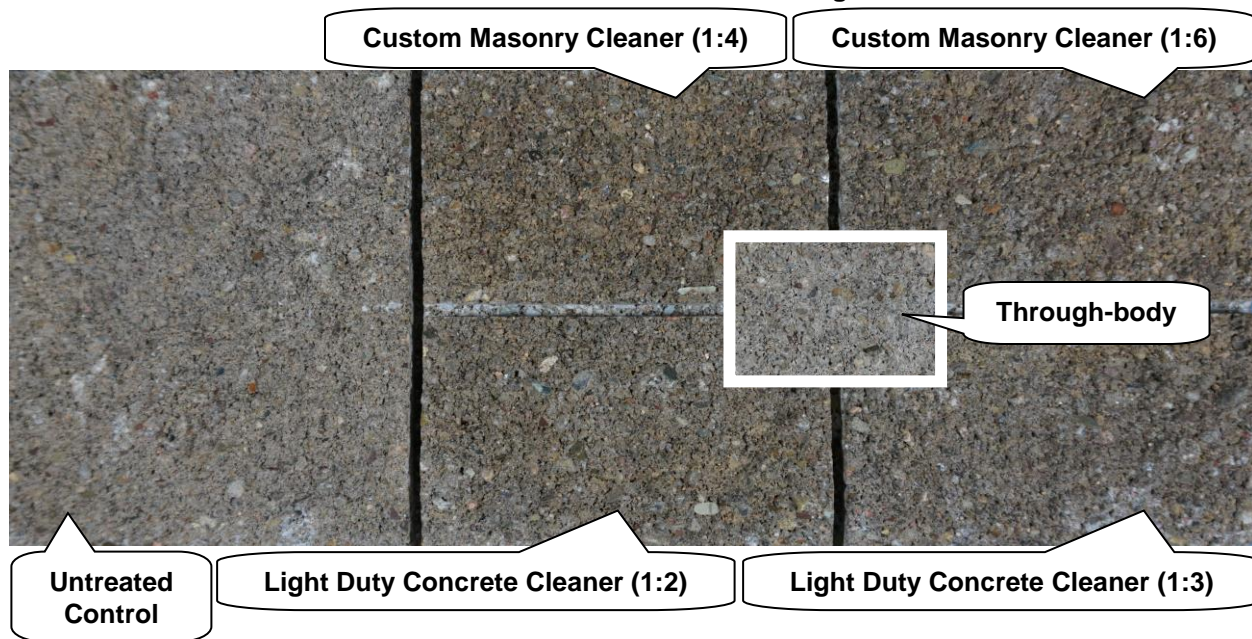
"Dutchess Aydon" After Cleaning



TEST RESULTS AND PHOTOGRAPHS: New Construction Cleaning / Color Uniformity (cont.)

Substrate: Concrete Brick	Name: "Contessa Oxford"		
Product	Dilution	Aggregate Exposure	Surface Pigment Alteration/Removal
Custom Masonry Cleaner	1:4	3	3
Custom Masonry Cleaner	1:6	3	3
Light Duty Concrete Cleaner	1:2	2	2
Light Duty Concrete Cleaner	1:3	2	2

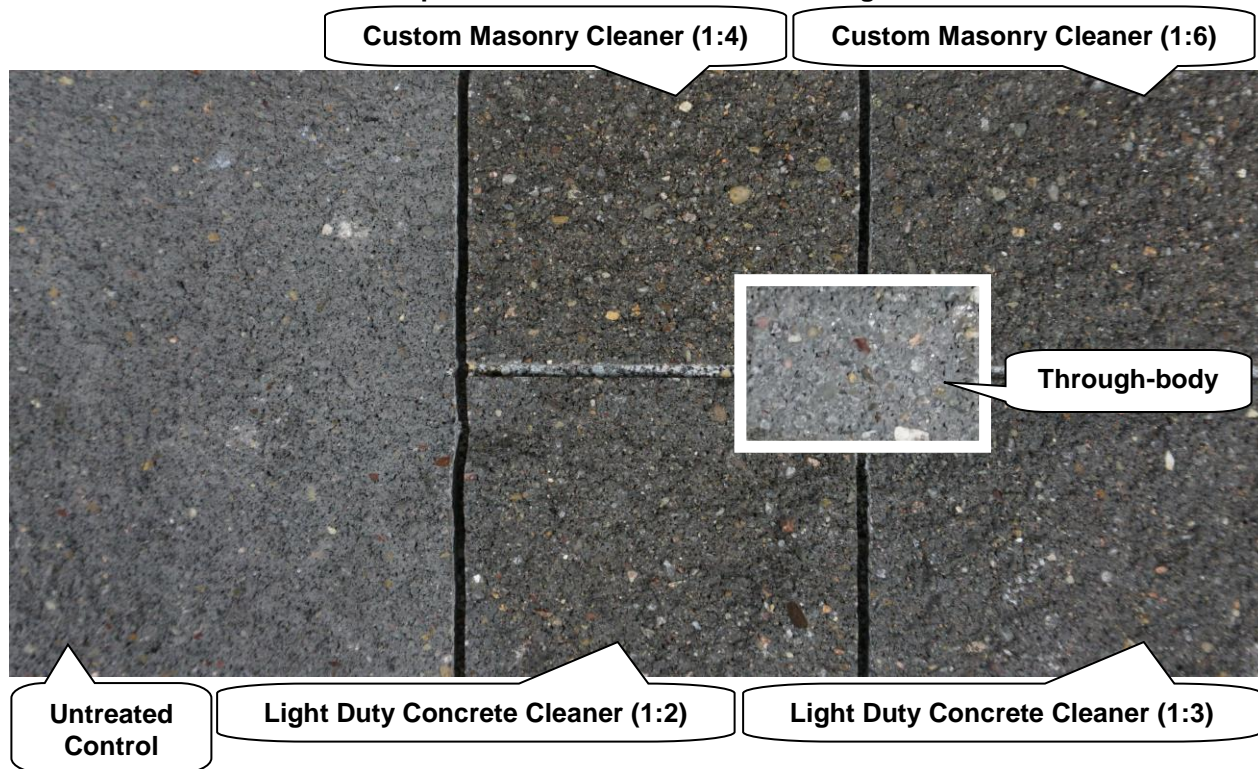
"Contessa Oxford" After Cleaning



TEST RESULTS AND PHOTOGRAPHS: New Construction Cleaning / Color Uniformity (cont.)

Substrate: Architectural Block	Name: "Split Ashlar Charcoal"		
Product	Dilution	Aggregate Exposure	Surface Pigment Alteration/Removal
Custom Masonry Cleaner	1:4	2	2
Custom Masonry Cleaner	1:6	1	1
Light Duty Concrete Cleaner	1:2	1	1
Light Duty Concrete Cleaner	1:3	1	1

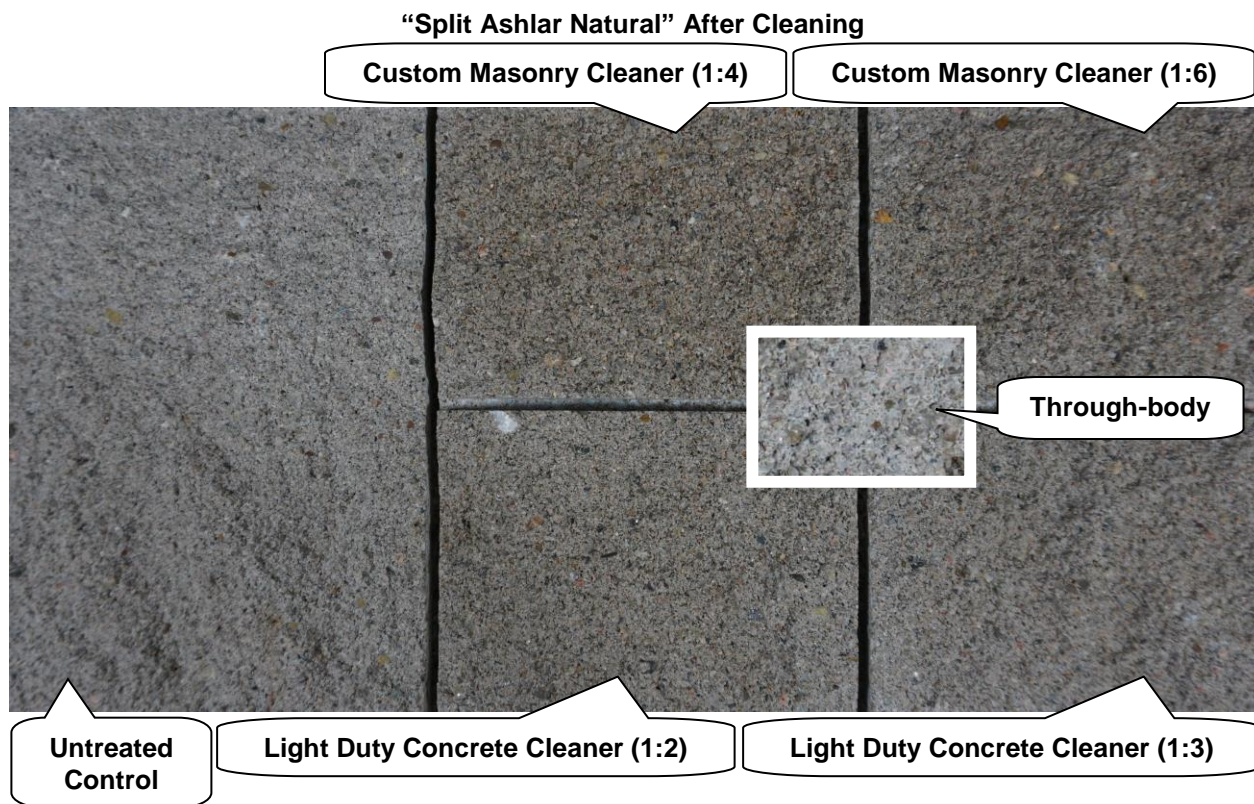
"Split Ashlar Charcoal" After Cleaning



TEST RESULTS AND PHOTOGRAPHS: New Construction Cleaning / Color Uniformity (cont.)

Substrate: Architectural Block	Name: "Split Ashlar Natural"		
Product	Dilution	Aggregate Exposure	Surface Pigment Alteration/Removal
Custom Masonry Cleaner	1:4	2	2
Custom Masonry Cleaner	1:6	1	1
Light Duty Concrete Cleaner	1:2	1	1
Light Duty Concrete Cleaner	1:3	1*	1*

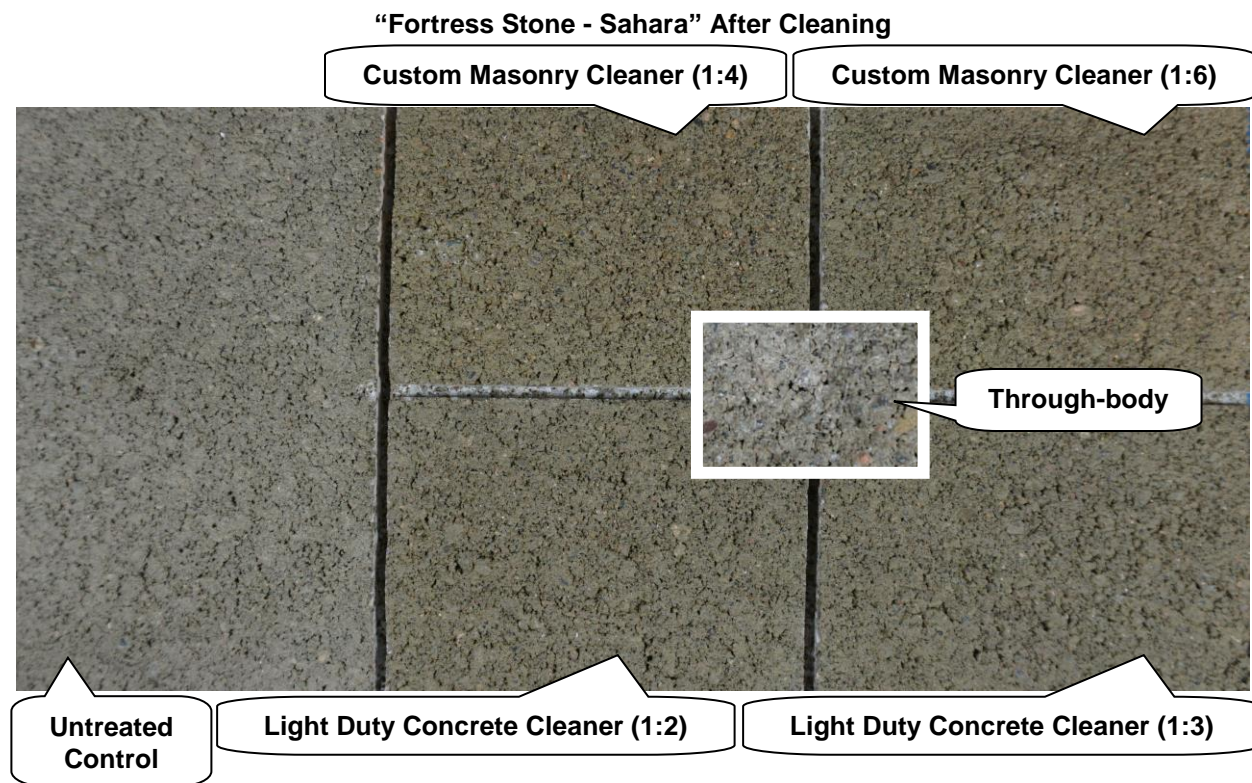
***NOTE:** Very slight change compared to through-body.



TEST RESULTS AND PHOTOGRAPHS: New Construction Cleaning / Color Uniformity (cont.)

Substrate: Concrete Block	Name: "Fortress Stone - Sahara"		
Product	Dilution	Aggregate Exposure	Surface Pigment Alteration/Removal
Custom Masonry Cleaner	1:4	1	1
Custom Masonry Cleaner	1:6	1	1
Light Duty Concrete Cleaner	1:2	1*	1*
Light Duty Concrete Cleaner	1:3	1*	1*

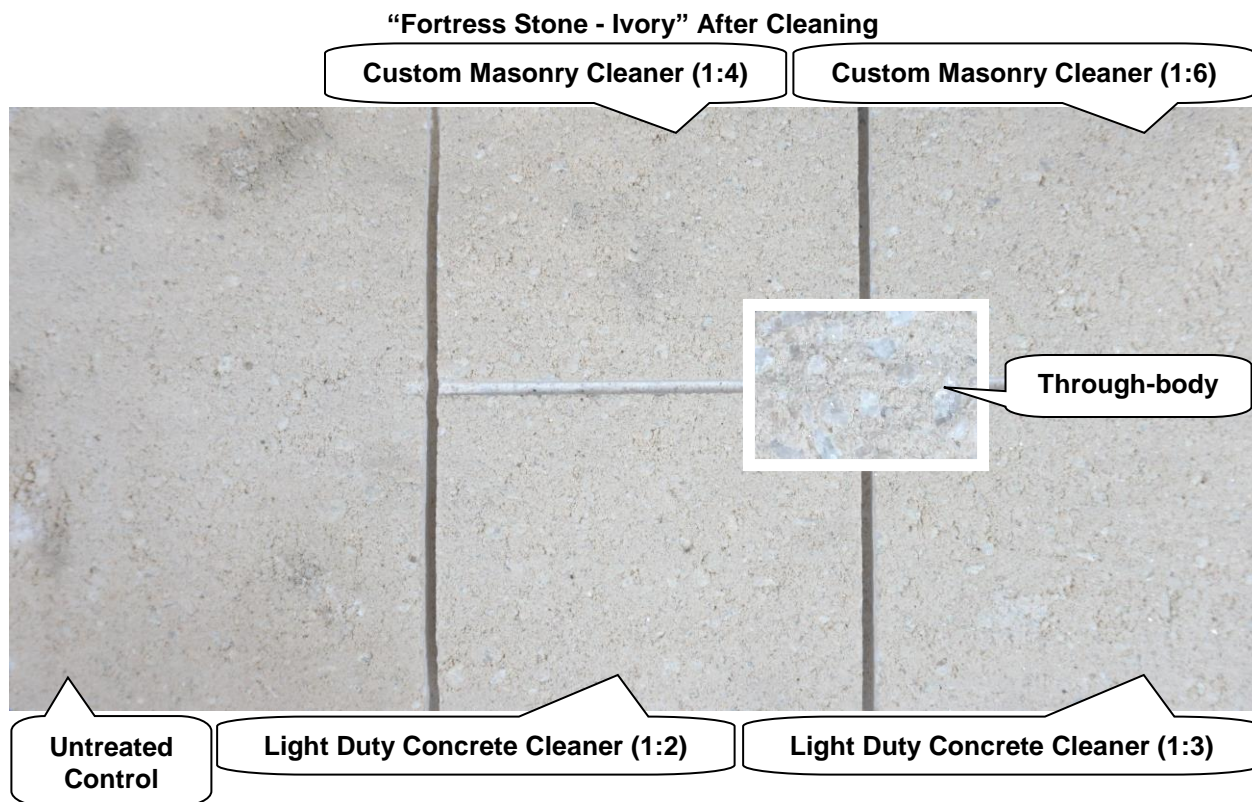
***NOTE:** Very slight change compared to through-body.



TEST RESULTS AND PHOTOGRAPHS: New Construction Cleaning / Color Uniformity (cont.)

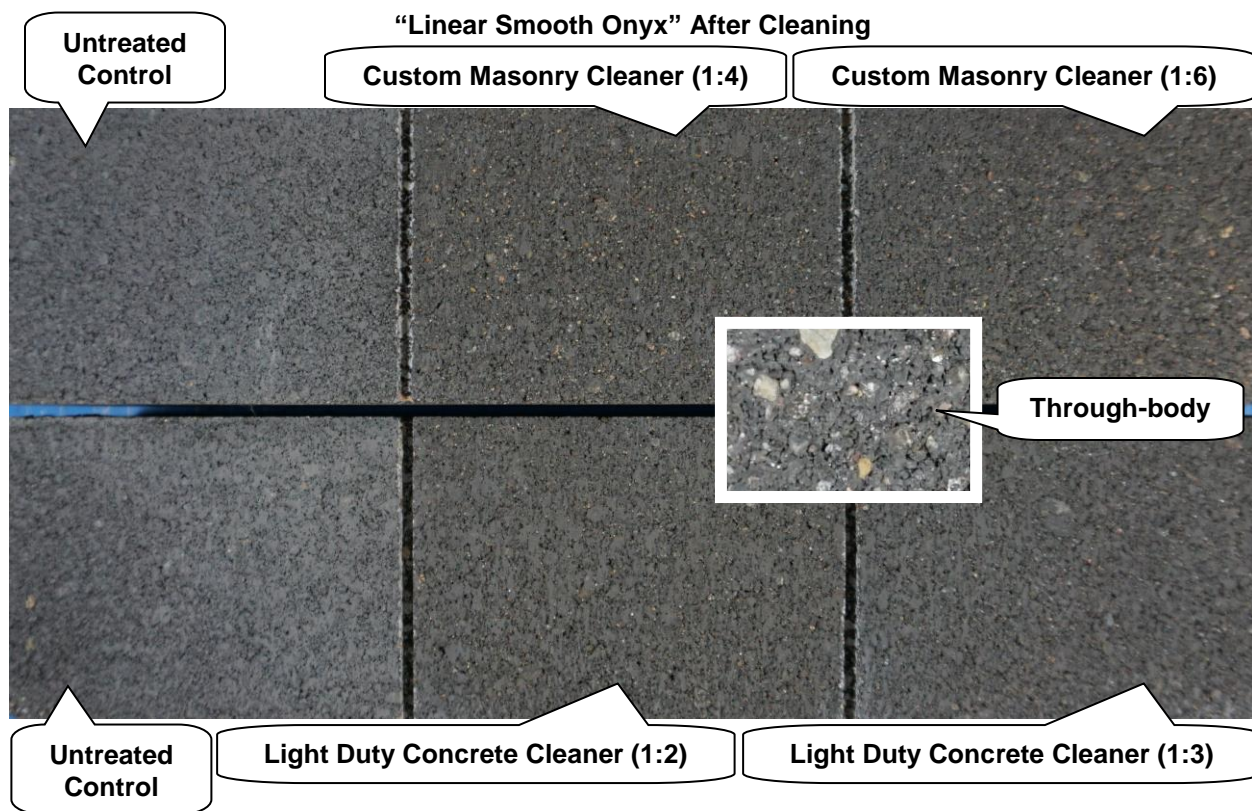
Substrate: Concrete Block	Name: "Fortress Stone - Ivory"		
Product	Dilution	Aggregate Exposure	Surface Pigment Alteration/Removal
Custom Masonry Cleaner	1:4	1*	0
Custom Masonry Cleaner	1:6	1*	0
Light Duty Concrete Cleaner	1:2	0	0
Light Duty Concrete Cleaner	1:3	0	0

***NOTE:** Very slight change compared to through-body.



TEST RESULTS AND PHOTOGRAPHS: New Construction Cleaning / Color Uniformity (cont.)

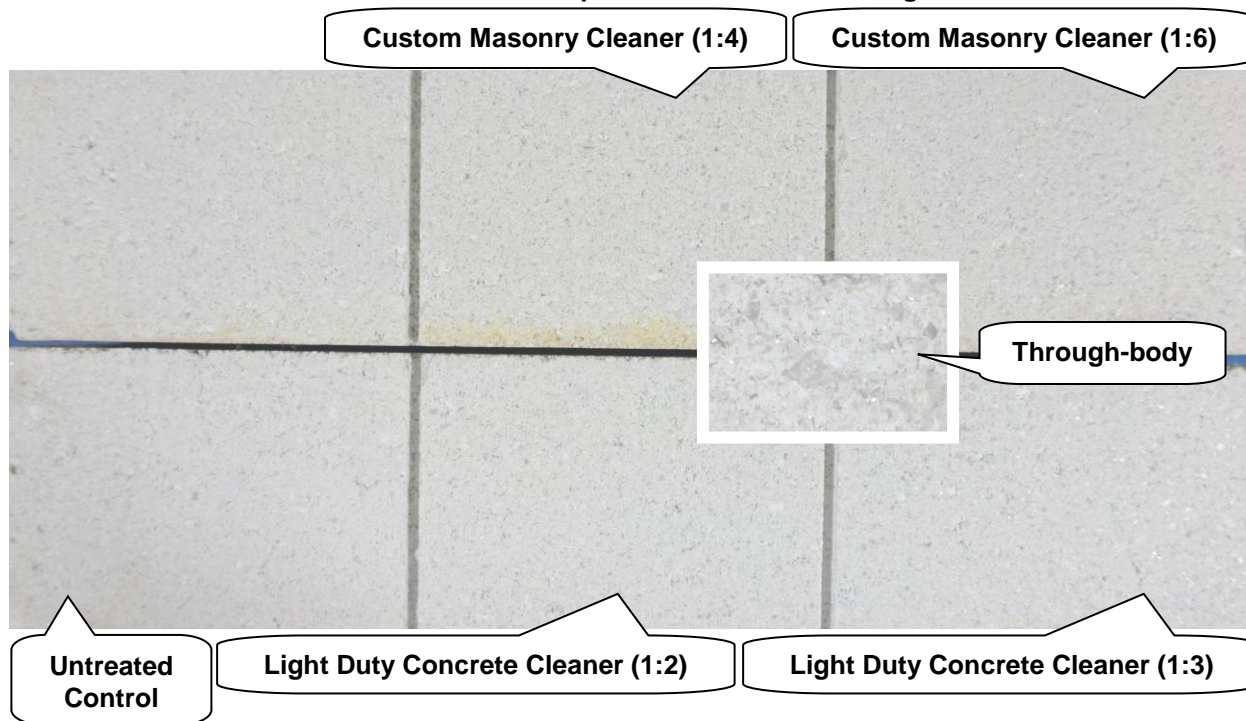
Substrate: Concrete Block	Name: "Linear Smooth Onyx"		
Product	Dilution	Aggregate Exposure	Surface Pigment Alteration/Removal
Custom Masonry Cleaner	1:4	2	2
Custom Masonry Cleaner	1:6	2	2
Light Duty Concrete Cleaner	1:2	1	1
Light Duty Concrete Cleaner	1:3	1	1



TEST RESULTS AND PHOTOGRAPHS: New Construction Cleaning / Color Uniformity (cont.)

Substrate: Concrete Block	Name: "Linear Smooth Alpine White"		
Product	Dilution	Aggregate Exposure	Surface Pigment Alteration/Removal
Custom Masonry Cleaner	1:4	0	0
Custom Masonry Cleaner	1:6	0	0
Light Duty Concrete Cleaner	1:2	0	0
Light Duty Concrete Cleaner	1:3	0	0

"Linear Smooth Alpine White" After Cleaning



***NOTE:** The yellow staining near the center of the sample was present prior to testing.

CONCLUSIONS – New Construction Cleaning

In most of the cleaning tests conducted, both dilutions of Sure Klean® Custom Masonry Cleaner removed a slight to moderate amount of surface pigment, exposing a slight to moderate amount of aggregate.

In most of the cleaning tests conducted, both dilutions of Sure Klean® Light Duty Concrete Cleaner removed zero to slight amounts of surface pigment, exposing zero to slight amount of aggregate.

When choosing the most appropriate product for the desired result, use Sure Klean® Light Duty Concrete Cleaner when minimal aggregate exposure is desired and Sure Klean® Custom Masonry Cleaner when additional aggregate exposure is desired.

Use higher concentrations and surface agitation to maximize aggregate exposure. Use low concentration and surface agitation to minimize aggregate exposure.

NOTE: When cleaning integrally colored CMUs.

Integrally colored concrete masonry units (CMUs) frequently have high amounts of pigments concentrated on the surface of the cured concrete unit. Variation of surface pigment concentrations from one CMU to the next creates a blotchy appearance in the completed wall. Allowed to remain on the surface of the CMU, the weakly bound pigment will weather and streak, further detracting from the appearance of the completed CMU wall.

In addition to removing excess mortar and construction related soiling, the goal of any cleaning operation undertaken on an integrally colored CMU should include removal of unnaturally high concentrations of surface pigment. By revealing the natural through-body color on the integrally colored unit, the overall color uniformity and weathering resistance of the completed CMU wall is improved.

RECOMMENDATIONS: New Construction Cleaning

Recommendations for cleaning for each concrete sample submitted by Shaw Brick, Lantz, Nova Scotia are provided in the chart below. Recommendations are based on the cleaner and dilution that provided the best match to the through-body.

Sample	New Construction Cleaning
"Dutchess Aydon" Concrete Brick	Sure Klean® Custom Masonry Cleaner (1:4) or (1:6) OR Sure Klean® Light Duty Concrete Cleaner (1:2) or (1:3)
"Contessa Oxford" Concrete Brick	Sure Klean® Light Duty Concrete Cleaner (1:2) or (1:3)
"Split Ashlar Charcoal" Architectural Block	Sure Klean® Custom Masonry Cleaner (1:6) OR Sure Klean® Light Duty Concrete Cleaner (1:2) or (1:3)
"Split Ashlar Natural" Architectural Block	
"Fortress Stone – Sahara" Concrete Block	Sure Klean® Custom Masonry Cleaner (1:4) or (1:6) OR Sure Klean® Light Duty Concrete Cleaner (1:2) or (1:3)
"Fortress Stone – Ivory" Concrete Block	
"Linear Smooth Onyx" Concrete Block	Sure Klean® Light Duty Concrete Cleaner (1:2) or (1:3)
"Linear Smooth Alpine White" Concrete Block	Sure Klean® Custom Masonry Cleaner (1:4) or (1:6) OR Sure Klean® Light Duty Concrete Cleaner (1:2) or (1:3)

The most appropriate cleaner and dilution should be determined on the specific job-site, and will be dependent primarily on the nature and severity of soiling present at that location.

Apply all products in accordance with the manufacturer's recommendation provided on container labels and product data sheets. On-site testing should be conducted to determine the most appropriate cleaning product and procedures for a particular project. See product literature for additional application and product information.

SAMPLE PREPARATION: Treatment Application

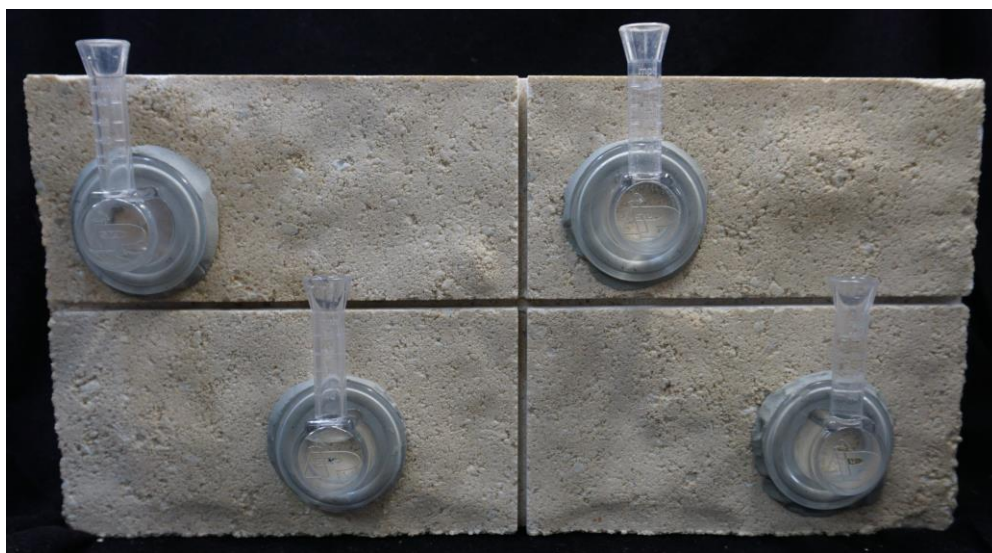
Prior to treatment application, the submitted samples were cleaned with Sure Klean® Light Duty Concrete Cleaner at a dilution of 1:2 in accordance with the current PROSOCO, Inc. Product Data Sheet instructions and rinsed using pressure rinsing equipment.* After the samples were allowed to dry for at least 24 hours, the treatments were applied in a single brushing application in accordance with the current PROSOCO, Inc. Product Data Sheet instructions.

***Pressure Rinsing Equipment** – Masonry washing equipment generating approximately 700-800 psi with a water flow rate of 8 gallons per minute delivered through a 45-degree fan spray tip was used for rinsing.

TEST METHODS: Protective Water Repellents

Water Absorption Tube Test: RILEM II.4, 60 mph, 20 Minutes

The water absorption tube test simulating wind driven rain conditions was performed. This test simulates 60 mile per hour wind driven rain conditions for a period of 20 minutes.

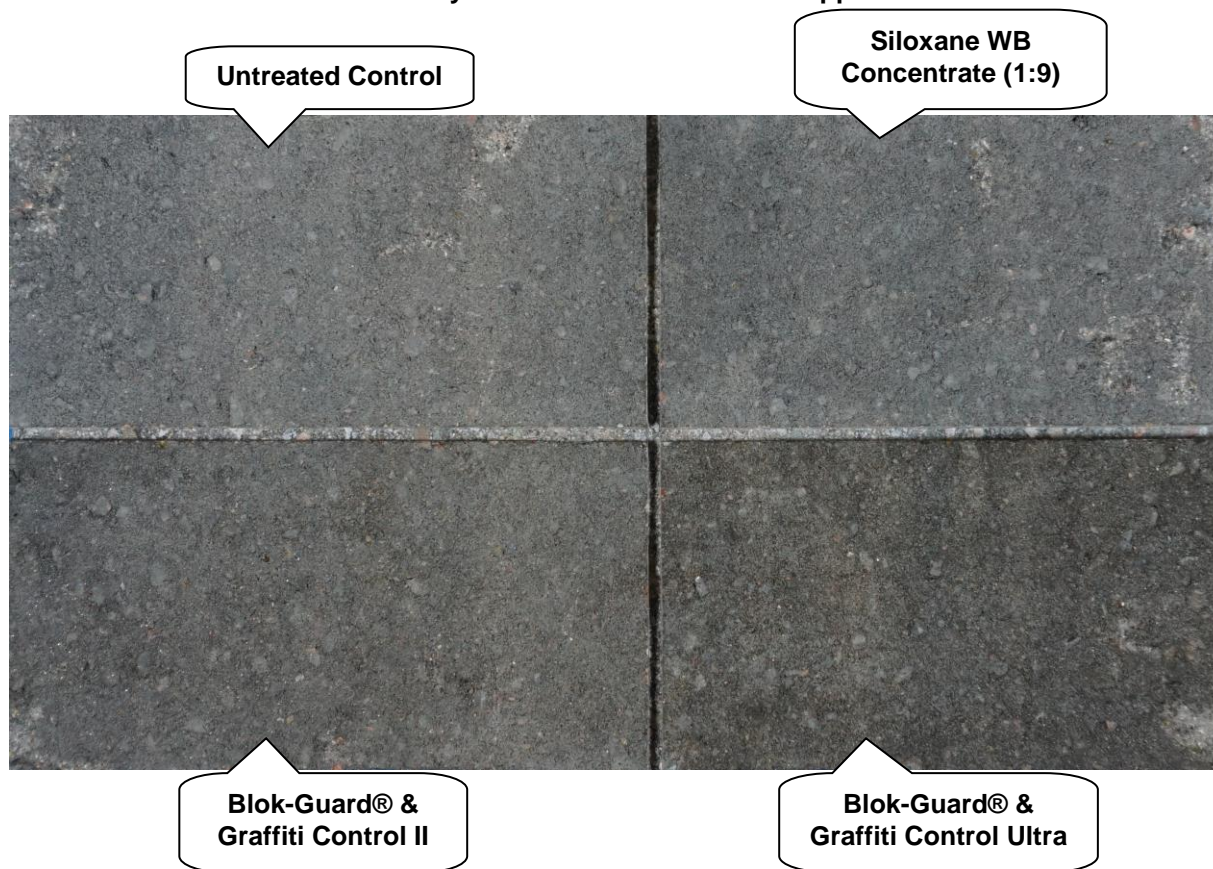


TEST RESULTS AND PHOTOGRAPHS: Protective Water Repellents

Water Absorption Tube Test: RILEM II.4, 60 mph, 20 Minutes

“Dutchess Aydon” Concrete Brick	
Untreated Control	60 mph
Sure Klean® Weather Seal Siloxane WB Concentrate (1:9)	60 mph
Sure Klean® Weather Seal Blok-Guard® & Graffiti Control II	60 mph
Sure Klean® Weather Seal Blok-Guard® & Graffiti Control Ultra	60 mph

“Dutchess Aydon” Concrete Brick After Application

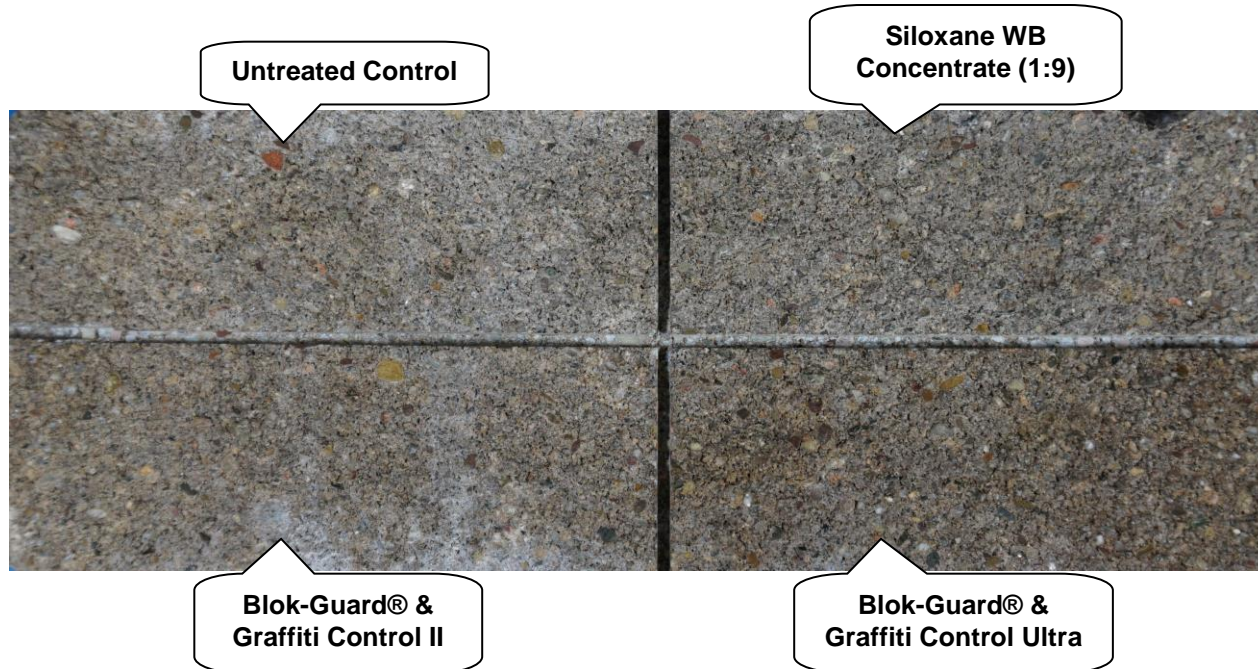


TEST RESULTS AND PHOTOGRAPHS: Protective Water Repellents (cont.)

Water Absorption Tube Test: RILEM II.4, 60 mph, 20 Minutes

"Contessa Oxford" Concrete Brick	
Untreated Control	<40 mph
Sure Klean® Weather Seal Siloxane WB Concentrate (1:9)	59 mph
Sure Klean® Weather Seal Blok-Guard® & Graffiti Control II	<40 mph
Sure Klean® Weather Seal Blok-Guard® & Graffiti Control Ultra	60 mph

"Contessa Oxford" Concrete Brick After Application



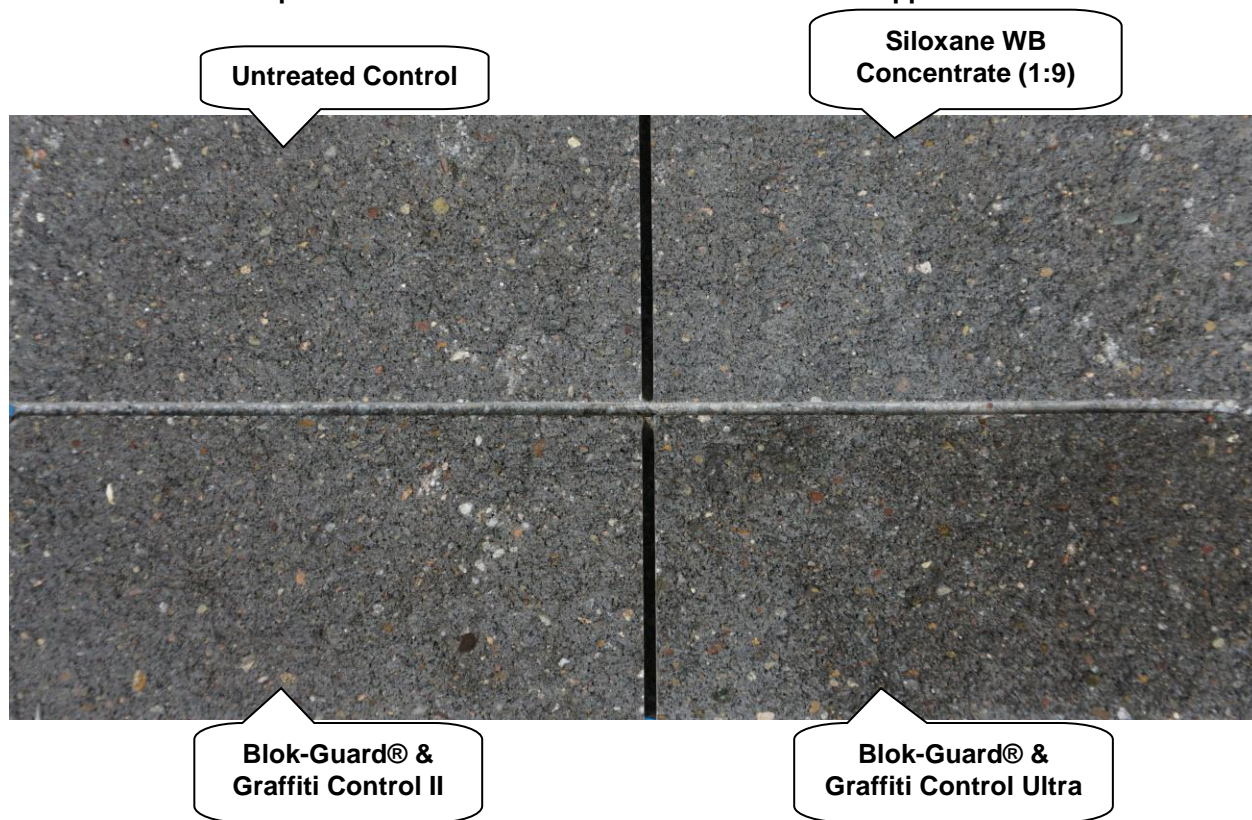
NOTE: The white staining visible on the sample was present before testing began.

TEST RESULTS AND PHOTOGRAPHS: Protective Water Repellents (cont.)

Water Absorption Tube Test: RILEM II.4, 60 mph, 20 Minutes

“Split Ashlar Charcoal” Architectural Block	
Untreated Control	<40 mph
Sure Klean® Weather Seal Siloxane WB Concentrate (1:9)	59 mph
Sure Klean® Weather Seal Blok-Guard® & Graffiti Control II	49 mph
Sure Klean® Weather Seal Blok-Guard® & Graffiti Control Ultra	58 mph

“Split Ashlar Charcoal” Architectural Block After Application

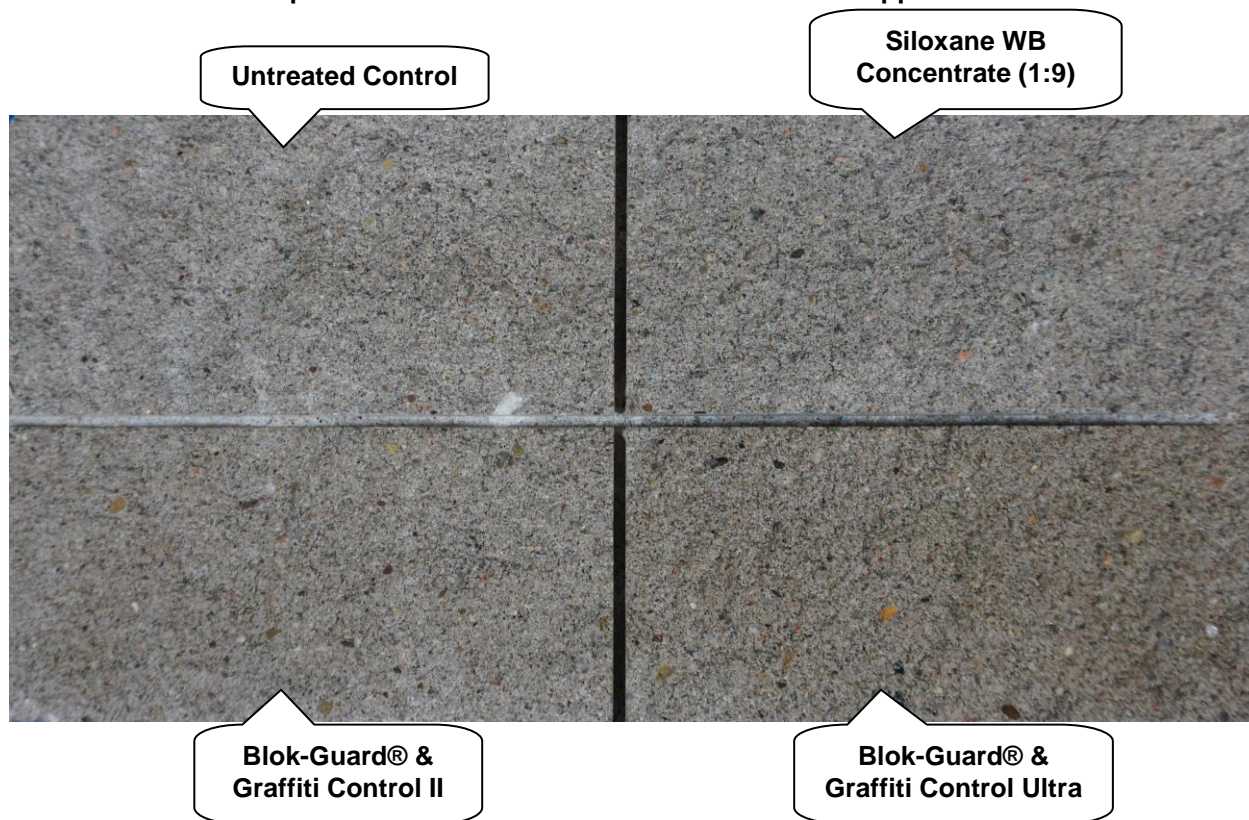


TEST RESULTS AND PHOTOGRAPHS: Protective Water Repellents (cont.)

Water Absorption Tube Test: RILEM II.4, 60 mph, 20 Minutes

“Split Ashlar Natural” Architectural Block	
Untreated Control	<40 mph
Sure Klean® Weather Seal Siloxane WB Concentrate (1:9)	<40 mph
Sure Klean® Weather Seal Blok-Guard® & Graffiti Control II	56 mph
Sure Klean® Weather Seal Blok-Guard® & Graffiti Control Ultra	60 mph

“Split Ashlar Natural” Architectural Block After Application

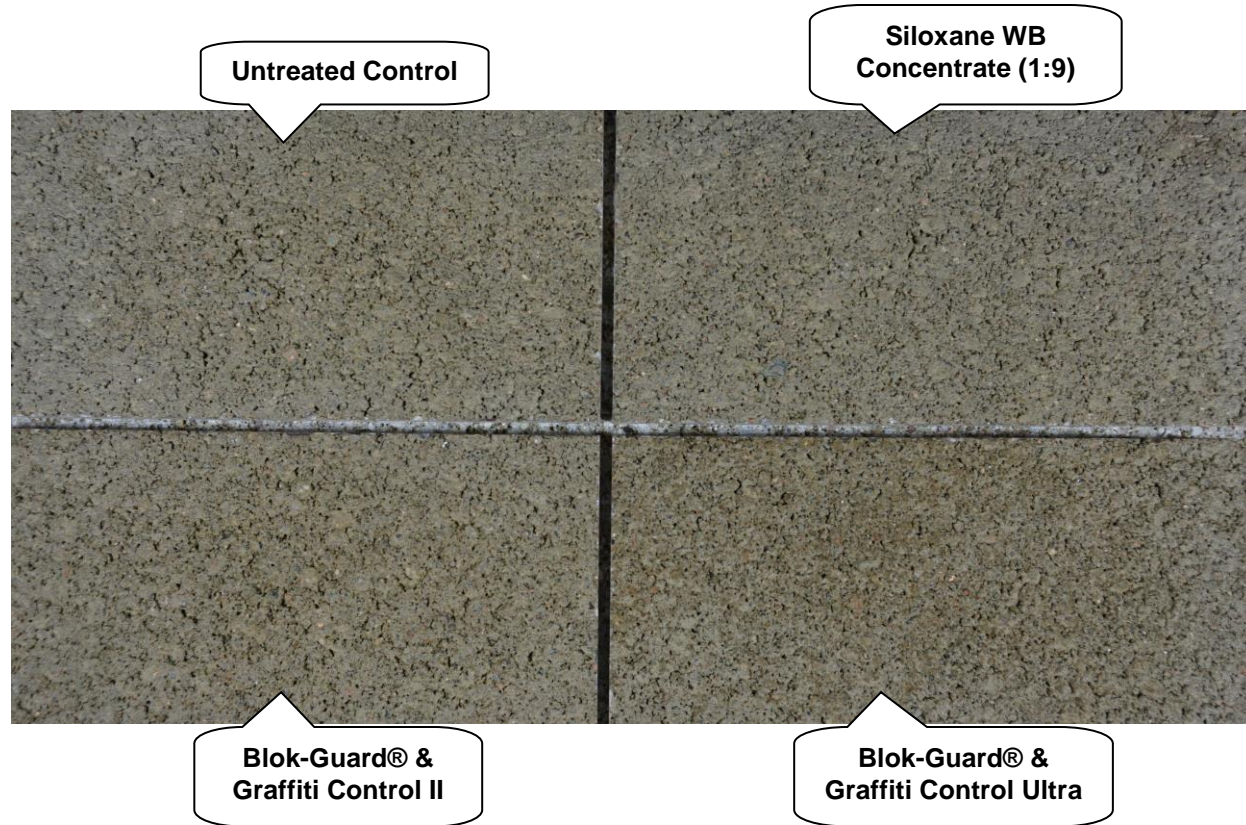


TEST RESULTS AND PHOTOGRAPHS: Protective Water Repellents (cont.)

Water Absorption Tube Test: RILEM II.4, 60 mph, 20 Minutes

"Fortress Stone - Sahara" Concrete Block	
Untreated Control	<40 mph
Sure Klean® Weather Seal Siloxane WB Concentrate (1:9)	<40 mph
Sure Klean® Weather Seal Blok-Guard® & Graffiti Control II	<40 mph
Sure Klean® Weather Seal Blok-Guard® & Graffiti Control Ultra	<40 mph

"Fortress Stone - Sahara" Concrete Block After Application

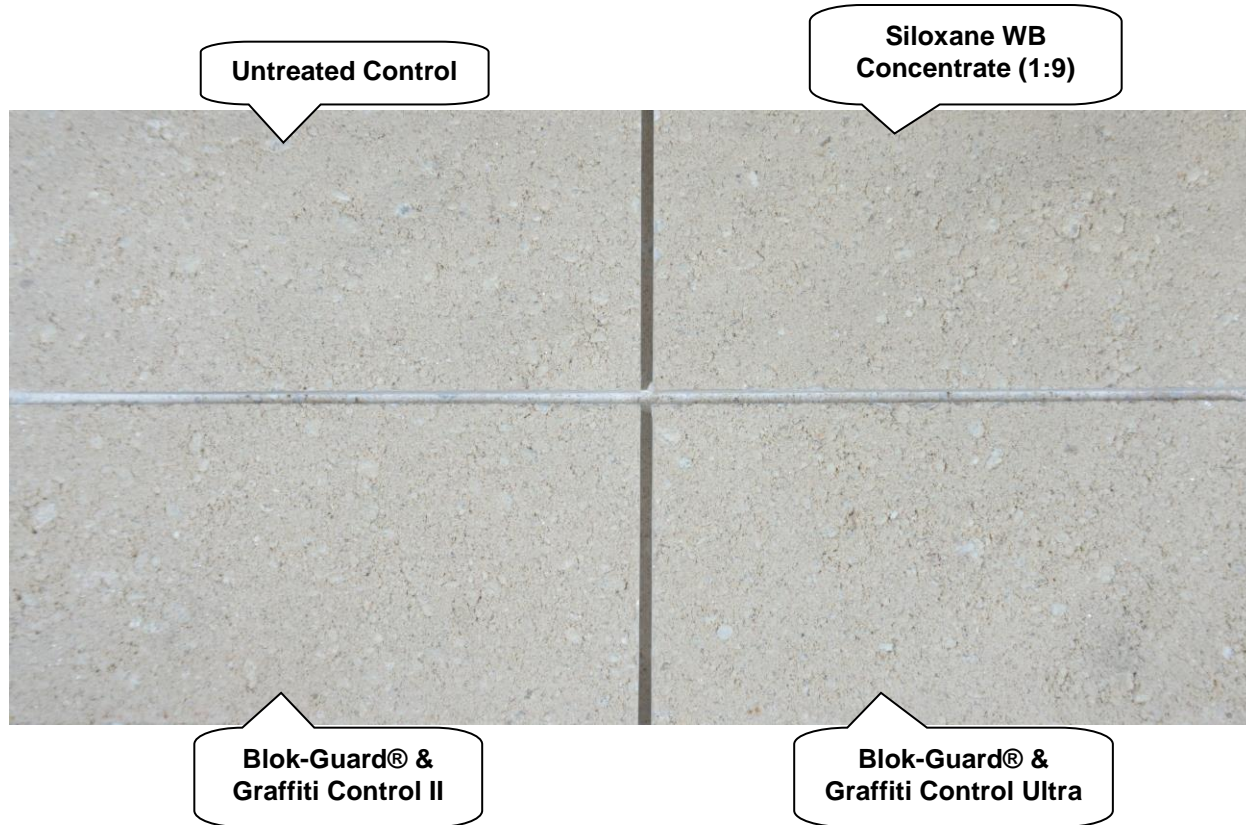


TEST RESULTS AND PHOTOGRAPHS: Protective Water Repellents (cont.)

Water Absorption Tube Test: RILEM II.4, 60 mph, 20 Minutes

"Fortress Stone - Ivory" Concrete Block	
Untreated Control	<40 mph
Sure Klean® Weather Seal Siloxane WB Concentrate (1:9)	60 mph
Sure Klean® Weather Seal Blok-Guard® & Graffiti Control II	<40 mph
Sure Klean® Weather Seal Blok-Guard® & Graffiti Control Ultra	60 mph

"Fortress Stone - Ivory" Concrete Block After Application

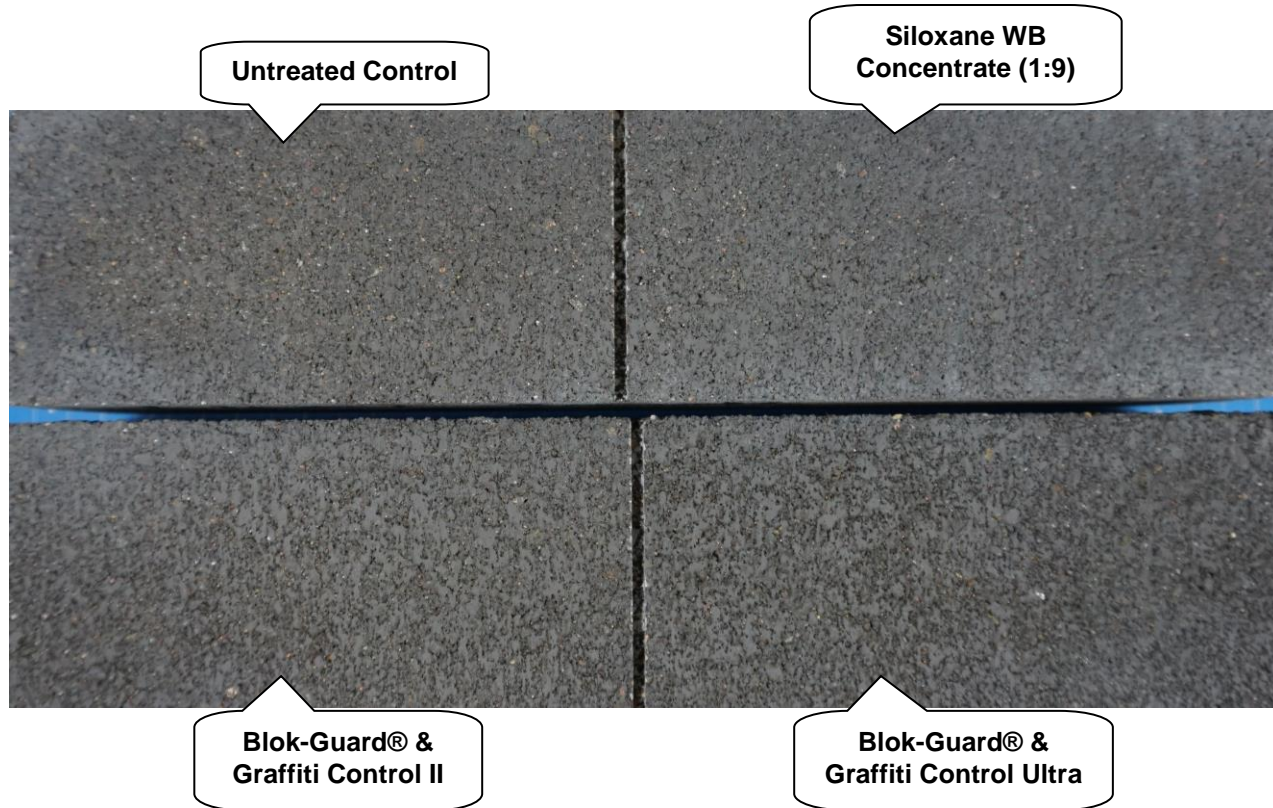


TEST RESULTS AND PHOTOGRAPHS: Protective Water Repellents (cont.)

Water Absorption Tube Test: RILEM II.4, 60 mph, 20 Minutes

“Linear Smooth Onyx” Concrete Block	
Untreated Control	<40 mph
Sure Klean® Weather Seal Siloxane WB Concentrate (1:9)	<40 mph
Sure Klean® Weather Seal Blok-Guard® & Graffiti Control II	<40 mph
Sure Klean® Weather Seal Blok-Guard® & Graffiti Control Ultra	60 mph

“Linear Smooth Onyx” Concrete Block After Application

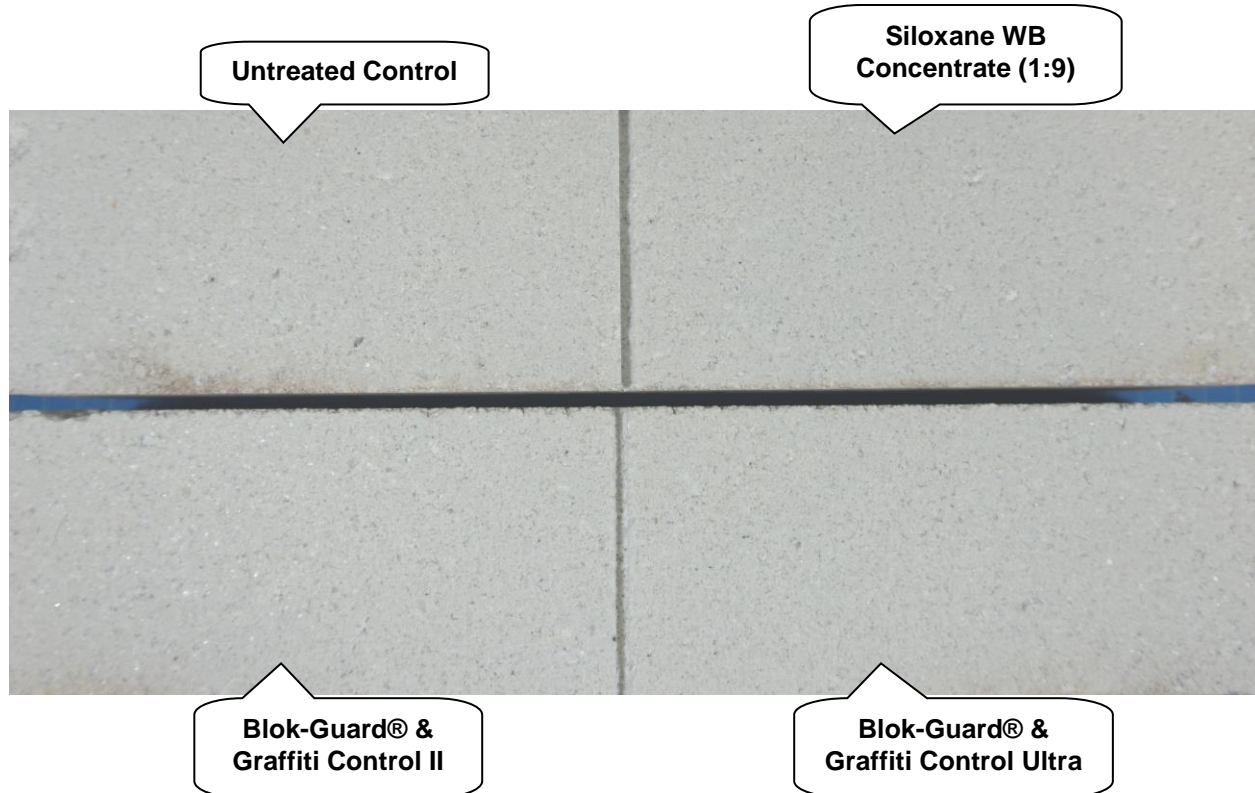


TEST RESULTS AND PHOTOGRAPHS: Protective Water Repellents (cont.)

Water Absorption Tube Test: RILEM II.4, 60 mph, 20 Minutes

"Linear Smooth Alpine White" Concrete Block	
Untreated Control	<40 mph
Sure Klean® Weather Seal Siloxane WB Concentrate (1:9)	60 mph
Sure Klean® Weather Seal Blok-Guard® & Graffiti Control II	60 mph
Sure Klean® Weather Seal Blok-Guard® & Graffiti Control Ultra	60 mph

"Linear Smooth Alpine White" Concrete Block After Application



CONCLUSIONS: Protective Water Repellents

Based on the laboratory evaluations, Sure Klean® Weather Seal Siloxane WB Concentrate diluted with nine parts water and Sure Klean® Weather Seal Blok-Guard® & Graffiti Control Ultra provided good water repellent protection to most of the submitted samples.

However, due to the visible holes on the surface of the “Fortress Stone – Sahara” sample, none of the treatments tested provided adequate water repellent protection.

Sure Klean® Weather Seal Blok-Guard® & Graffiti Control II provided a very slight to slight color enhancement to most of the submitted samples. Sure Klean® Weather Seal Blok-Guard® & Graffiti Control Ultra provided a slight to moderate color enhancement to most of the submitted samples.

Sure Klean® Weather Seal Siloxane WB Concentrate diluted with nine parts water caused no change in appearance to the submitted samples.

RECOMMENDATIONS: Water Repellency

Recommendations for water repellency for each concrete sample submitted by Shaw Brick, Lantz, Nova Scotia are provided in the chart below. Recommendations are based on the treatment(s) that proved most effective.

Sample	Water Repellency
“Dutchess Aydon” Concrete Brick	Sure Klean® Weather Seal Siloxane WB Concentrate (1:9) OR Sure Klean® Weather Seal Blok-Guard® & Graffiti Control II OR Sure Klean® Weather Seal Blok-Guard® & Graffiti Control Ultra
“Contessa Oxford” Concrete Brick	Sure Klean® Weather Seal Siloxane WB Concentrate (1:9) OR Sure Klean® Weather Seal Blok-Guard® & Graffiti Control Ultra
“Split Ashlar Charcoal” Architectural Block	
“Split Ashlar Natural” Architectural Block	Sure Klean® Weather Seal Blok-Guard® & Graffiti Control II OR Sure Klean® Weather Seal Blok-Guard® & Graffiti Control Ultra
“Fortress Stone – Sahara” Concrete Block	None
“Fortress Stone – Ivory” Concrete Block	Sure Klean® Weather Seal Siloxane WB Concentrate (1:9) OR Sure Klean® Weather Seal Blok-Guard® & Graffiti Control Ultra
“Linear Smooth Onyx” Concrete Block	
“Linear Smooth Alpine White” Concrete Block	Sure Klean® Weather Seal Blok-Guard® & Graffiti Control Ultra
	Sure Klean® Weather Seal Siloxane WB Concentrate (1:9) OR Sure Klean® Weather Seal Blok-Guard® & Graffiti Control II OR Sure Klean® Weather Seal Blok-Guard® & Graffiti Control Ultra

Apply all products in accordance with the manufacturer's recommendation provided on container labels and product data sheets. On-site testing should be conducted to determine the most treatment and procedures for a particular project. See product literature for additional application and product information.

TEST METHODS: Graffiti Resistance

This evaluation compares the effectiveness of graffiti control treatments in preventing staining of enamel spray paint and permanent markers.

Spray paint and markers were applied as graffiti agents to the untreated and treated surfaces five days after application of Sure Klean® Weather Seal Blok-Guard® & Graffiti Control II and Sure Klean® Weather Seal Blok-Guard® & Graffiti Control Ultra. Removal of the graffiti agents was attempted 24 hours after application of the graffiti agents, using Enviro Klean® SafStrip® 8 and Defacer Eraser® Graffiti Remover.

Chemical cleaners were evaluated using the following procedure:

1. Apply the product to a dry surface, soiled with graffiti.
2. Allow appropriate dwell time:
 - SafStrip® 8..... 30 minutes
 - Graffiti Remover 5 minutes
3. Rinse thoroughly until water runs clear. *
4. Allow the surface to dry thoroughly and visually examine to determine effectiveness.

***Pressure Rinsing Equipment** – Masonry washing equipment generating approximately 700-800 psi with a water flow rate of 8 gallons per minute delivered through a 45-degree fan spray tip was used for rinsing.

TEST RESULTS AND PHOTOGRAPHS: Graffiti Resistance

“Dutchess Aydon” Concrete Brick					
Untreated Control	Red Paint	Black Marker	Red Marker	Blue Marker	% Avg. Removal
SafStrip® 8	50%	80%	70%	80%	70%
Graffiti Remover	50%	50%	50%	50%	50%
Blok-Guard® & Graffiti Control II	Red Paint	Black Marker	Red Marker	Blue Marker	% Avg. Removal
SafStrip® 8	70%	80%	70%	80%	75%
Graffiti Remover	80%	80%	70%	70%	75%
Blok-Guard® & Graffiti Control Ultra	Red Paint	Black Marker	Red Marker	Blue Marker	% Avg. Removal
SafStrip® 8	70%	90%	80%	85%	81%
Graffiti Remover	90%	90%	80%	85%	86%

TEST RESULTS AND PHOTOGRAPHS: Graffiti Resistance (cont.)

“Dutchess Aydon” Concrete Brick With Graffiti



Untreated
Control

Blok-Guard® &
Graffiti Control II

Blok-Guard® &
Graffiti Control Ultra

“Dutchess Aydon” Concrete Brick After Graffiti Testing



Untreated
Control

Blok-Guard® &
Graffiti Control II

Blok-Guard® &
Graffiti Control Ultra

KEY

1 = SafStrip® 8

2 = Graffiti Remover

TEST RESULTS AND PHOTOGRAPHS: Graffiti Resistance (cont.)

“Contessa Oxford” Concrete Brick					
Untreated Control	Red Paint	Black Marker	Red Marker	Blue Marker	% Avg. Removal
SafStrip® 8	50%	50%	50%	50%	50%
Graffiti Remover	60%	50%	50%	50%	53%
Blok-Guard® & Graffiti Control II	Red Paint	Black Marker	Red Marker	Blue Marker	% Avg. Removal
SafStrip® 8	70%	90%	80%	80%	80%
Graffiti Remover	80%	90%	80%	80%	83%
Blok-Guard® & Graffiti Control Ultra	Red Paint	Black Marker	Red Marker	Blue Marker	% Avg. Removal
SafStrip® 8	80%	95%	90%	100%	91%
Graffiti Remover	90%	100%	85%	95%	93%

“Split Ashlar Charcoal” Architectural Block					
Untreated Control	Red Paint	Black Marker	Red Marker	Blue Marker	% Avg. Removal
SafStrip® 8	60%	70%	50%	50%	58%
Graffiti Remover	75%	60%	60%	50%	61%
Blok-Guard® & Graffiti Control II	Red Paint	Black Marker	Red Marker	Blue Marker	% Avg. Removal
SafStrip® 8	60%	95%	70%	60%	71%
Graffiti Remover	85%	95%	60%	50%	73%
Blok-Guard® & Graffiti Control Ultra	Red Paint	Black Marker	Red Marker	Blue Marker	% Avg. Removal
SafStrip® 8	75%	95%	90%	90%	88%
Graffiti Remover	95%	100%	95%	95%	96%

TEST RESULTS AND PHOTOGRAPHS: Graffiti Resistance (cont.)

“Split Ashlar Charcoal” Architectural Block With Graffiti



Untreated
Control

Blok-Guard® &
Graffiti Control II

Blok-Guard® &
Graffiti Control Ultra

“Split Ashlar Charcoal” Architectural Block After Graffiti Testing



Untreated
Control

Blok-Guard® &
Graffiti Control II

Blok-Guard® &
Graffiti Control Ultra

KEY

1 = SafStrip® 8

2 = Graffiti Remover

TEST RESULTS AND PHOTOGRAPHS: Graffiti Resistance (cont.)

“Split Ashlar Natural” Architectural Block					
Untreated Control	Red Paint	Black Marker	Red Marker	Blue Marker	% Avg. Removal
SafStrip® 8	100%	60%	40%	50%	63%
Graffiti Remover	100%	50%	30%	30%	53%
Blok-Guard® & Graffiti Control II	Red Paint	Black Marker	Red Marker	Blue Marker	% Avg. Removal
SafStrip® 8	60%	95%	70%	60%	71%
Graffiti Remover	85%	95%	60%	50%	73%
Blok-Guard® & Graffiti Control Ultra	Red Paint	Black Marker	Red Marker	Blue Marker	% Avg. Removal
SafStrip® 8	75%	95%	90%	90%	88%
Graffiti Remover	95%	100%	95%	95%	96%

“Fortress Stone – Sahara” Concrete Block					
Untreated Control	Red Paint	Black Marker	Red Marker	Blue Marker	% Avg. Removal
SafStrip® 8	60%	70%	70%	70%	68%
Graffiti Remover	80%	50%	50%	50%	58%
Blok-Guard® & Graffiti Control II	Red Paint	Black Marker	Red Marker	Blue Marker	% Avg. Removal
SafStrip® 8	70%	95%	70%	70%	76%
Graffiti Remover	90%	90%	70%	70%	80%
Blok-Guard® & Graffiti Control Ultra	Red Paint	Black Marker	Red Marker	Blue Marker	% Avg. Removal
SafStrip® 8	90%	95%	90%	90%	91%
Graffiti Remover	90%	90%	80%	90%	88%

TEST RESULTS AND PHOTOGRAPHS: Graffiti Resistance (cont.)

"Fortress Stone – Ivory" Concrete Block					
Untreated Control	Red Paint	Black Marker	Red Marker	Blue Marker	% Avg. Removal
SafStrip® 8	40%	50%	50%	30%	43%
Graffiti Remover	30%	50%	50%	30%	40%
Blok-Guard® & Graffiti Control II	Red Paint	Black Marker	Red Marker	Blue Marker	% Avg. Removal
SafStrip® 8	60%	80%	60%	60%	65%
Graffiti Remover	75%	75%	50%	50%	63%
Blok-Guard® & Graffiti Control Ultra	Red Paint	Black Marker	Red Marker	Blue Marker	% Avg. Removal
SafStrip® 8	75%	85%	85%	85%	83%
Graffiti Remover	85%	95%	95%	95%	93%

TEST RESULTS AND PHOTOGRAPHS: Graffiti Resistance (cont.)

“Fortress Stone - Ivory” Concrete Block With Graffiti



**Untreated
Control**

**Blok-Guard® &
Graffiti Control II**

**Blok-Guard® &
Graffiti Control Ultra**

“Fortress Stone - Ivory” Concrete Block After Graffiti Testing



**Untreated
Control**

**Blok-Guard® &
Graffiti Control II**

**Blok-Guard® &
Graffiti Control Ultra**

KEY

1 = SafStrip® 8

2 = Graffiti Remover

TEST RESULTS AND PHOTOGRAPHS: Graffiti Resistance (cont.)

“Linear Smooth Onyx” Concrete Block					
Untreated Control	Red Paint	Black Marker	Red Marker	Blue Marker	% Avg. Removal
SafStrip® 8	50%	20%	20%	20%	28%
Graffiti Remover	50%	20%	20%	20%	28%
Blok-Guard® & Graffiti Control II	Red Paint	Black Marker	Red Marker	Blue Marker	% Avg. Removal
SafStrip® 8	60%	50%	50%	50%	53%
Graffiti Remover	75%	50%	50%	50%	56%
Blok-Guard® & Graffiti Control Ultra	Red Paint	Black Marker	Red Marker	Blue Marker	% Avg. Removal
SafStrip® 8	60%	80%	80%	80%	75%
Graffiti Remover	75%	80%	80%	80%	79%

“Linear Smooth Alpine White” Concrete Block					
Untreated Control	Red Paint	Black Marker	Red Marker	Blue Marker	% Avg. Removal
SafStrip® 8	50%	75%	75%	80%	70%
Graffiti Remover	50%	70%	70%	70%	65%
Blok-Guard® & Graffiti Control II	Red Paint	Black Marker	Red Marker	Blue Marker	% Avg. Removal
SafStrip® 8	60%	90%	75%	75%	75%
Graffiti Remover	75%	90%	75%	75%	79%
Blok-Guard® & Graffiti Control Ultra	Red Paint	Black Marker	Red Marker	Blue Marker	% Avg. Removal
SafStrip® 8	60%	95%	95%	95%	86%
Graffiti Remover	75%	95%	90%	90%	88%

CONCLUSIONS: Graffiti Resistance

Based upon laboratory evaluations, graffiti removal was improved when the submitted samples were treated with Sure Klean® Weather Seal Blok-Guard® & Graffiti Control II and Sure Klean® Weather Seal Blok-Guard® & Graffiti Control Ultra, although Sure Klean® Weather Seal Blok-Guard® & Graffiti Control Ultra was the most effective treatment on the samples.

RECOMMENDATIONS: Graffiti Control

Recommendations for graffiti control for each concrete sample submitted by Shaw Brick, Lantz, Nova Scotia are provided in the chart below. Recommendations are based on the treatment(s) that proved most effective on average for providing graffiti repellency and the product that was most effective on average at removing the graffiti on all types submitted.

Sample	Graffiti Repellents	Graffiti Removers
"Dutchess Aydon" Concrete Brick	² Sure Klean® Weather Seal Blok-Guard® & Graffiti Control II OR ¹ Sure Klean® Weather Seal Blok-Guard® & Graffiti Control Ultra	² Enviro Klean® SafStrip® 8 OR ¹ Defacer Eraser® Graffiti Remover
"Contessa Oxford" Concrete Brick		
"Split Ashlar Charcoal" Architectural Block		
"Split Ashlar Natural" Architectural Block		
"Fortress Stone – Sahara" Concrete Block		
"Fortress Stone – Ivory" Concrete Block		
"Linear Smooth Onyx" Concrete Block		
"Linear Smooth Alpine White" Concrete Block		

NOTE: "1" indicates the most effective product and "2" indicates the second most effective product.

Apply all products in accordance with the manufacturer's recommendation provided on container labels and product data sheets. Because the severity of graffiti varies from location to location, on-site testing should be conducted to determine the most appropriate graffiti control product and procedure for a particular project.



J. Lucas Comadoll
Project Testing Technician

ALL SAMPLES SUPPLIED FOR THE ABOVE EVALUATION WILL BE DISPOSED OF THIRTY (30) DAYS AFTER THE ISSUE DATE OF THIS REPORT. IF SAMPLES ARE TO BE RETAINED FOR ADDITIONAL TESTING OR RETURNED TO THE SENDER, PROVIDE WRITTEN INSTRUCTIONS TO THE LABORATORY WITHIN THIRTY (30) DAYS OF THE ISSUE DATE OF THIS REPORT.

Recommendations made within this report are based on laboratory test applications and observations. Final determination of the suitability of a product and/or procedure should be made only after thorough job testing on actual surfaces.