



# *Pallet Tag Program Laboratory Report*

## Shaw Brick – Clay Brick Lantz, Nova Scotia, Canada



*Project No. 1902-01 PTP*

***Prepared For:***



***Prepared By:***

*J. Lucas Comadoll*

J. Lucas Comadoll  
Project Testing Technician  
AMT Laboratories

April 2019



# LABORATORY REPORT

AMT Laboratories • 3741 Greenway Circle • Lawrence, Kansas 66046 • (888) 376-3600

**FOR:** Jamie Aucoin, Shaw Brick  
**cc:** Tom Lane, PROSOCO, Inc.  
Jake Boyer, PROSOCO, Inc.  
Al Morris, PROSOCO, Inc.

**SUBJECT:** Shaw Brick – Clay Brick  
Lantz, Nova Scotia, Canada  
Pallet Tag Evaluation

**DATE:** April 8, 2019  
**PROJECT:** 1902-01 PTP

## SAMPLES SUBMITTED:

Sample Type	Name	Color	Size
(6) Slender Brick	"Tapestry Red"	Red	7.5" x 2.25" x 0.5"
(6) Slender Brick	"Tapestry Buff"	Buff	7.5" x 2.25" x 0.5"
(6) Slender Brick	"Tapestry Brown"	Brown	7.5" x 2.25" x 0.5"
(6) Slender Brick	"Tapestry Manganese"	Dark Brown	7.5" x 2.25" x 0.5"
(6) Slender Brick	"Tapestry Red Flashed"	Dark Red/Brown	7.5" x 2.25" x 0.5"
(6) Slender Brick	"Tweedtex Red"	Red	7.5" x 2.25" x 0.5"
(6) Slender Brick	"Tweedtex Buff"	Buff	7.5" x 2.25" x 0.5"
(6) Slender Brick	"Tweedtex Brown"	Brown	7.5" x 2.25" x 0.5"
(6) Slender Brick	"Smooth Red"	Red	7.5" x 2.25" x 0.5"
(6) Slender Brick	"Smooth Buff"	Buff	7.5" x 2.25" x 0.5"
(6) Slender Brick	"Smooth Manganese"	Dark Brown	7.5" x 2.25" x 0.5"
(6) Slender Brick	"Port Morien"	Black	7.5" x 2.25" x 0.5"
(6) Slender Brick	"Atlantic White Point"	Light Brown with White surface	7.5" x 2.25" x 0.5"
(6) Slender Brick	"Highland Kirkhill"	Red with Various Surface Colorations	7.5" x 2.25" x 0.5"
(6) Slender Brick	"Antique Colonial"	Red with Gray Surface	7.5" x 2.25" x 0.5"

**SUBMITTED BY:** Jamie Aucoin  
Shaw Brick  
1101 Hwy #2, P.O. Box 2130  
Lantz, NS, B2S 3G4

**PURPOSE OF TEST:**

- To determine the most appropriate PROSOCO, Inc. new construction cleaner(s) for the submitted samples.
- To determine the most appropriate PROSOCO, Inc. water repellent(s) for the submitted samples.
- To determine the effectiveness of appropriate PROSOCO, Inc. products in preventing the penetration of, and simplifying the removal of, graffiti staining on the submitted samples.

**PRODUCTS EVALUATED:**

<b>New Construction Cleaning</b>	<b>Dilution:</b>
Sure Klean® Vana Trol®	1:6; 1:8
Sure Klean® 600 Detergent	1:6; 1:8
Enviro Klean® Safety Klean	1:2; 1:3

<b>Water Repellency</b>	<b>Dilution:</b>
Sure Klean® Weather Seal Siloxane PD	N/A*
Sure Klean® Weather Seal Blok-Guard® & Graffiti Control II	N/A*
Sure Klean® Weather Seal Blok-Guard® & Graffiti Control Ultra	N/A*

<b>Graffiti Resistance</b>	<b>Dilution:</b>
Sure Klean® Weather Seal Blok-Guard® & Graffiti Control II	N/A*
Sure Klean® Weather Seal Blok-Guard® & Graffiti Control Ultra	N/A*

<b>Graffiti Removal</b>	<b>Dilution:</b>
Defacer Eraser® Graffiti Remover	N/A*
Enviro Klean® SafStrip®	N/A*

**\*NOTE:** Per the product data sheet instructions, only use the product in concentrate. Do not dilute.

## TEST METHODS: New Construction Cleaning

Sure Klean® Vana Trol®, Sure Klean® 600 Detergent, and Enviro Klean® Safety Klean were evaluated to determine the optimal concentration of cleaner which leaves the external surface looking most like the uncleaned surface of the submitted samples.

**Surface Finish Removal** is the visual examination of the sample comparing the surface finish of the uncleaned surface to the surface finish cleaned with selected product(s) at given dilutions.

**Substrate Deterioration** is the visual examination of the sample comparing the uncleaned surface to surfaces cleaned with selected product(s) at given dilutions looking for any potential erosion/digestion of the sample.

**Color Change** is the visual examination comparing the color of the uncleaned surface to the color of surfaces cleaned with selected products at given dilutions.

**Staining** is the visual examination for changes that are the result of a chemical reaction that leaves a staining precipitate.

The following is the scale used for reporting results of both categories:

- 0 – **No change** compared to uncleaned surface
- 1 – **Slight change** compared to uncleaned surface
- 2 – **Moderate change** compared to uncleaned surface
- 3 – **Significant change** compared to uncleaned surface

### Cleaning Procedure:

1. Pre-wet the surface and apply diluted cleaning solution according to PROSOCO, Inc. Product Data Sheet.
2. Allow for an appropriate dwell time:
  - Vana Trol® .....3 minutes
  - 600 Detergent .....3 minutes
  - Safety Klean.....3 minutes
3. Reapply cleaning solution; do not let cleaner dry into sample.
4. Rinse thoroughly with plenty of fresh water.\*
5. Allow the sample to dry for at least 18 hours and visually examine.
6. Compare the uncleaned surfaces to the cleaned surfaces for the best match.

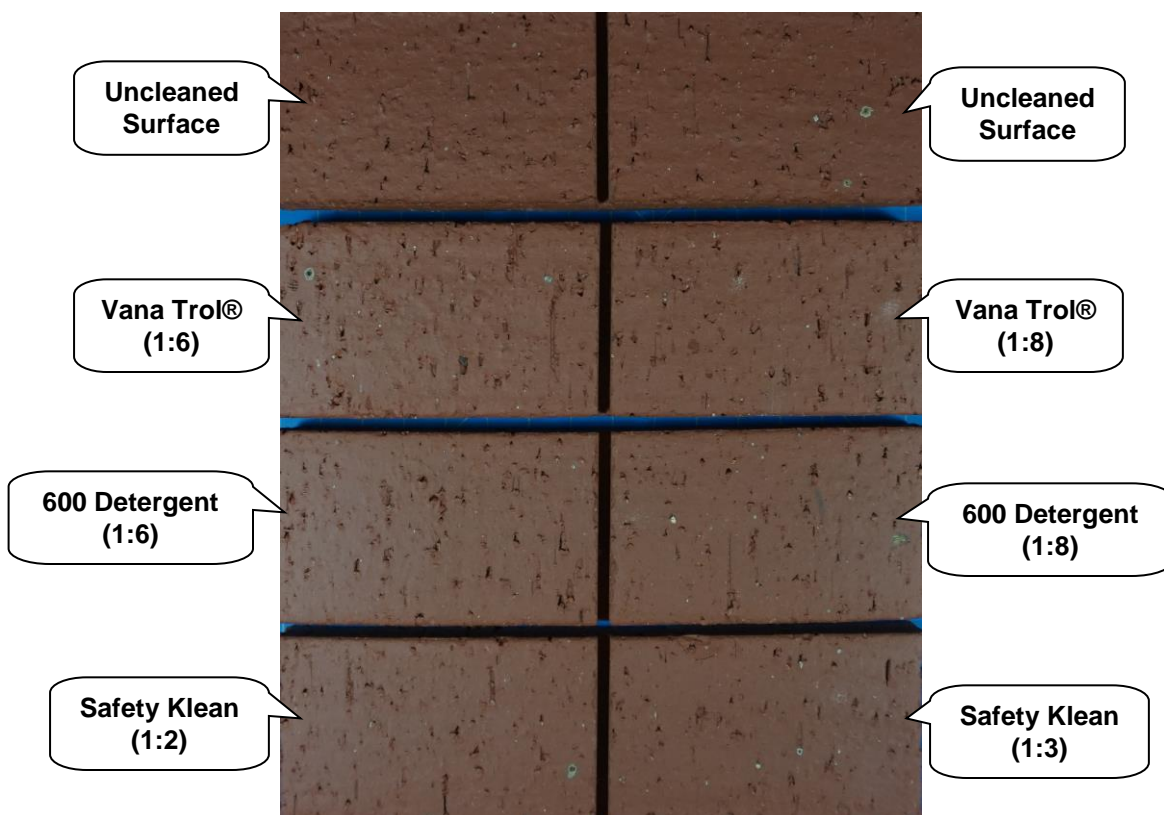
**\*Rinsing Equipment** – Masonry washing equipment generating approximately 700-800 psi with a water flow rate of 8 gallons per minute delivered through a 45 degree fan spray tip was used for rinsing.

## TEST RESULTS AND PHOTOGRAPHS: New Construction Cleaning

Scale used for reporting results of both categories:
0 – <b>No change</b> compared to uncleaned surface
1 – <b>Slight change</b> compared to uncleaned surface
2 – <b>Moderate change</b> compared to uncleaned surface
3 – <b>Significant change</b> compared to uncleaned surface

Name: "Tapestry Red" Brick					
Product	Dilution	Surface Finish Removal	Substrate Deterioration	Color Change	Staining
Vana Trol®	1:6	0	0	0	0
Vana Trol®	1:8	0	0	0	0
600 Detergent	1:6	0	0	0	0
600 Detergent	1:8	0	0	0	0
Safety Klean	1:2	0	0	0	0
Safety Klean	1:3	0	0	0	0

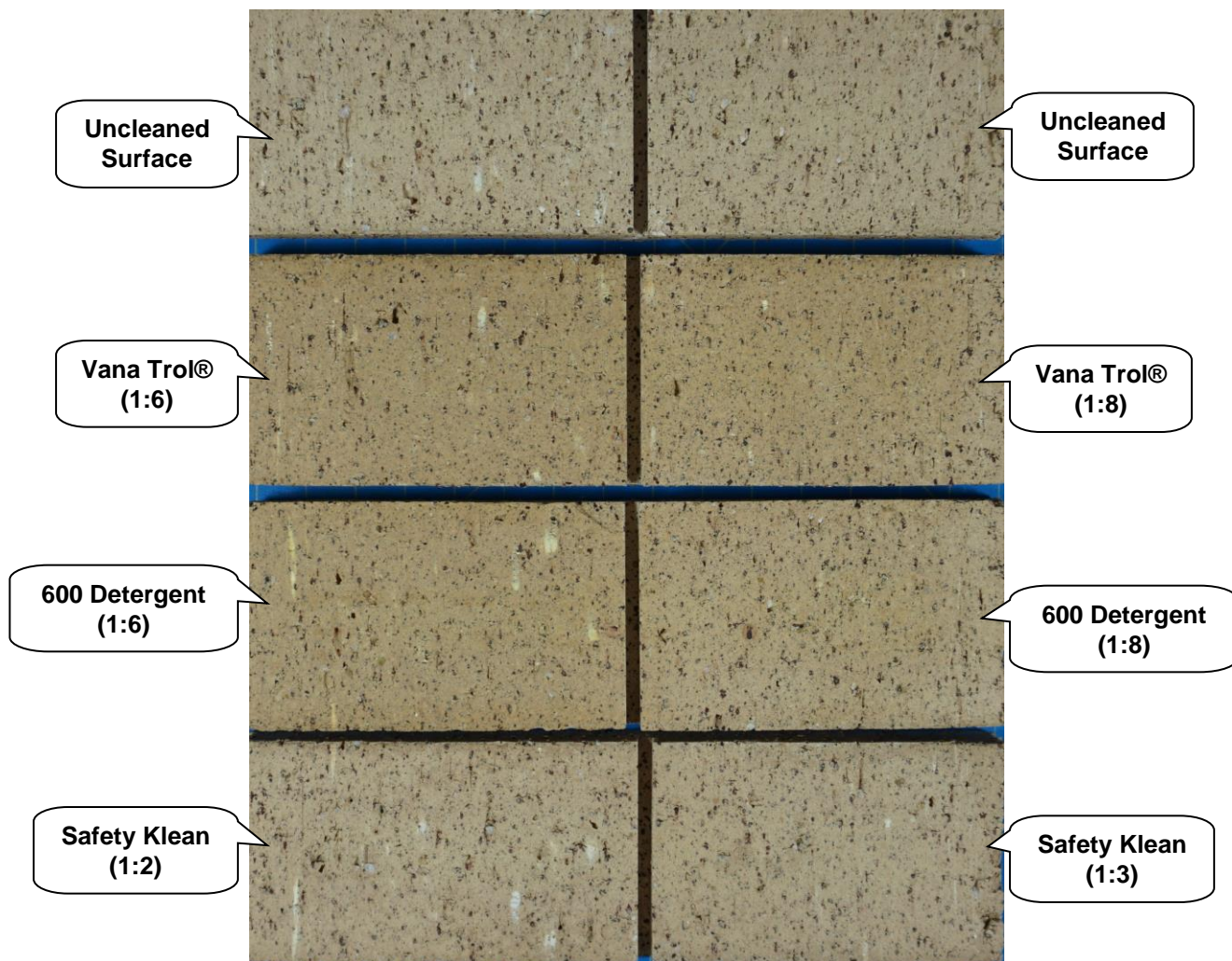
### "Tapestry Red" Brick After Cleaning



**TEST RESULTS AND PHOTOGRAPHS: New Construction Cleaning (cont.)**

Name: "Tapestry Buff" Brick					
Product	Dilution	Surface Finish Removal	Substrate Deterioration	Color Change	Staining
Vana Trol®	1:6	0	0	3	0
Vana Trol®	1:8	0	0	2	0
600 Detergent	1:6	0	0	3	0
600 Detergent	1:8	0	0	2	0
Safety Klean	1:2	0	0	1	0
Safety Klean	1:3	0	0	1	0

**"Tapestry Buff" Brick After Cleaning**



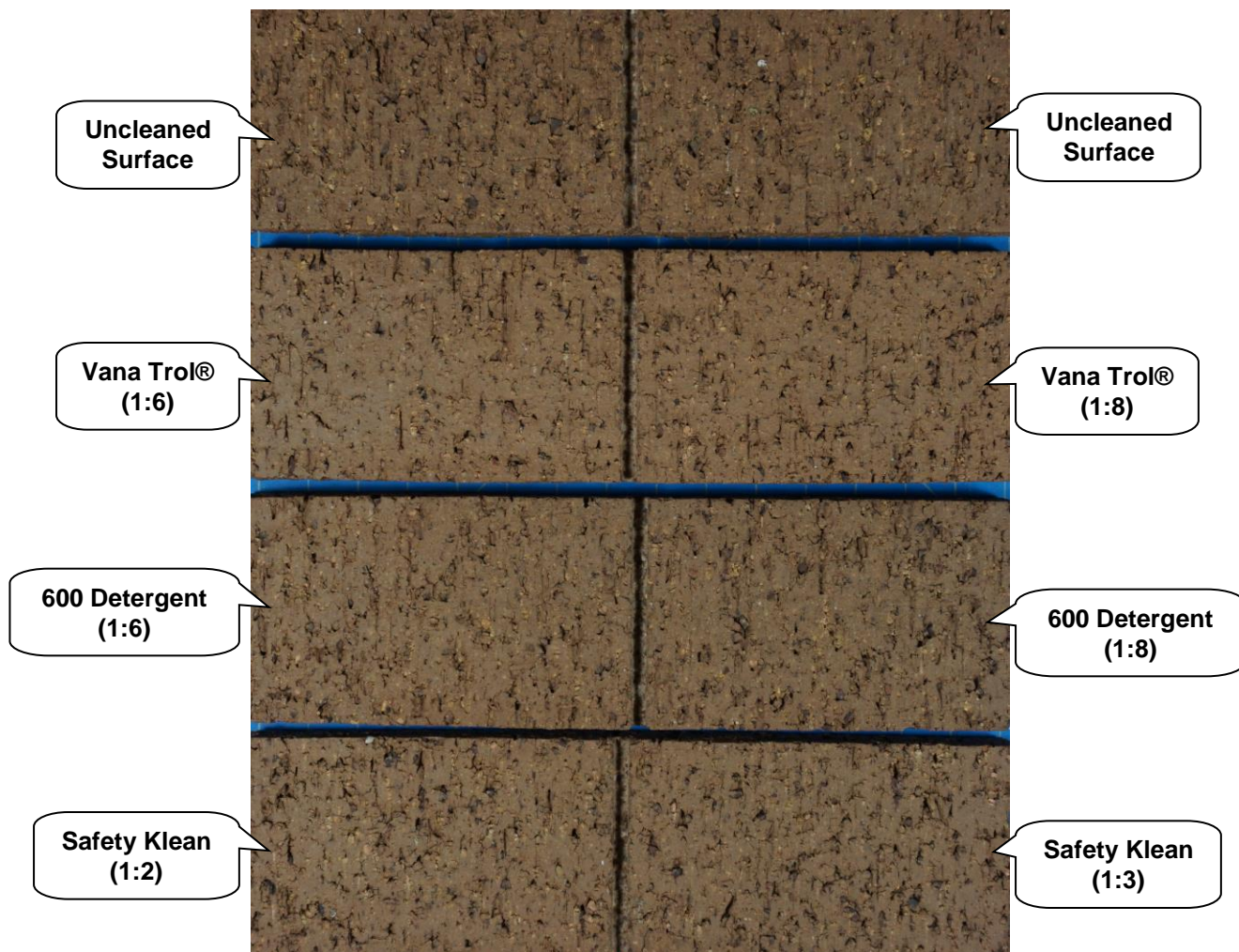


## TEST RESULTS AND PHOTOGRAPHS: New Construction Cleaning (cont.)

Name: "Tapestry Brown" Brick					
Product	Dilution	Surface Finish Removal	Substrate Deterioration	Color Change	Staining
Vana Trol®	1:6	0	0	0	0
Vana Trol®	1:8	0	0	0	0
600 Detergent	1:6	0	0	1*	0
600 Detergent	1:8	0	0	1*	0
Safety Klean	1:2	0	0	0	0
Safety Klean	1:3	0	0	0	0

\*NOTE: Very slight change compared to uncleaned surface.

"Tapestry Brown" Brick After Cleaning

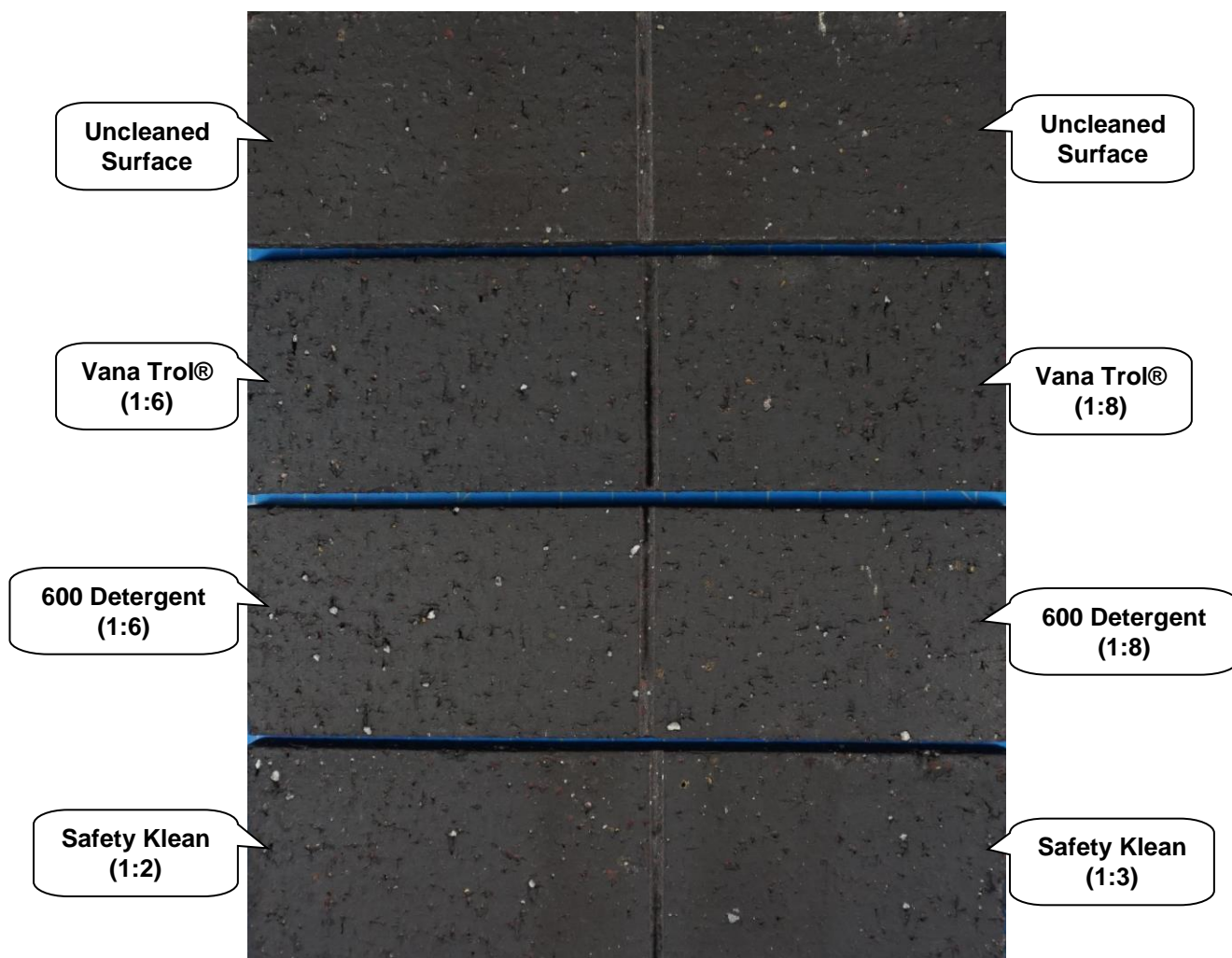




**TEST RESULTS AND PHOTOGRAPHS: New Construction Cleaning (cont.)**

Name: "Tapestry Manganese" Brick					
Product	Dilution	Surface Finish Removal	Substrate Deterioration	Color Change	Staining
Vana Trol®	1:6	0	0	0	0
Vana Trol®	1:8	0	0	0	0
600 Detergent	1:6	0	0	0	0
600 Detergent	1:8	0	0	0	0
Safety Klean	1:2	0	0	0	0
Safety Klean	1:3	0	0	0	0

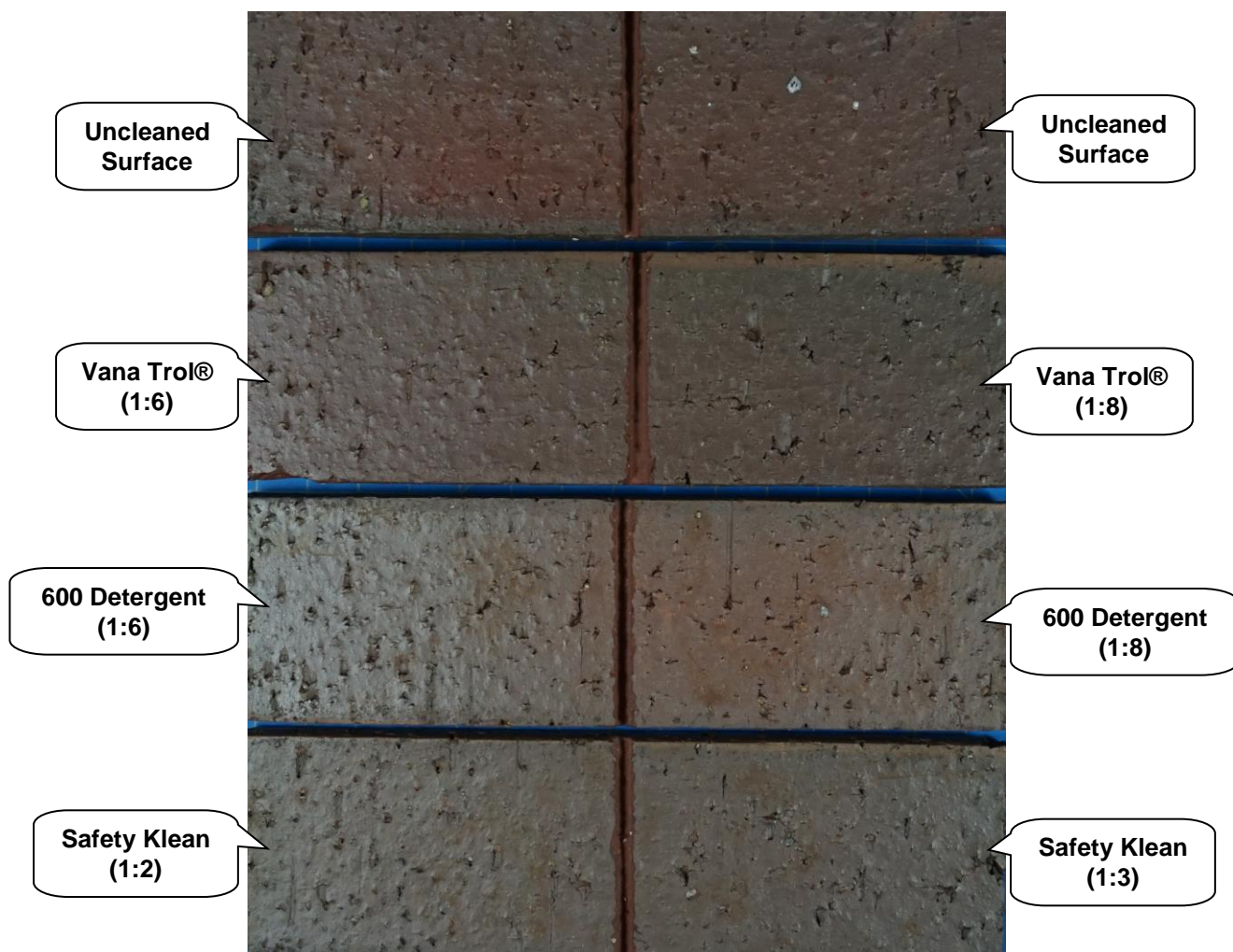
**"Tapestry Manganese" Brick After Cleaning**



**TEST RESULTS AND PHOTOGRAPHS: New Construction Cleaning (cont.)**

Name: "Tapestry Red Flashed" Brick					
Product	Dilution	Surface Finish Removal	Substrate Deterioration	Color Change	Staining
Vana Trol®	1:6	0	0	0	0
Vana Trol®	1:8	0	0	0	0
600 Detergent	1:6	0	0	0	0
600 Detergent	1:8	0	0	0	0
Safety Klean	1:2	0	0	0	0
Safety Klean	1:3	0	0	0	0

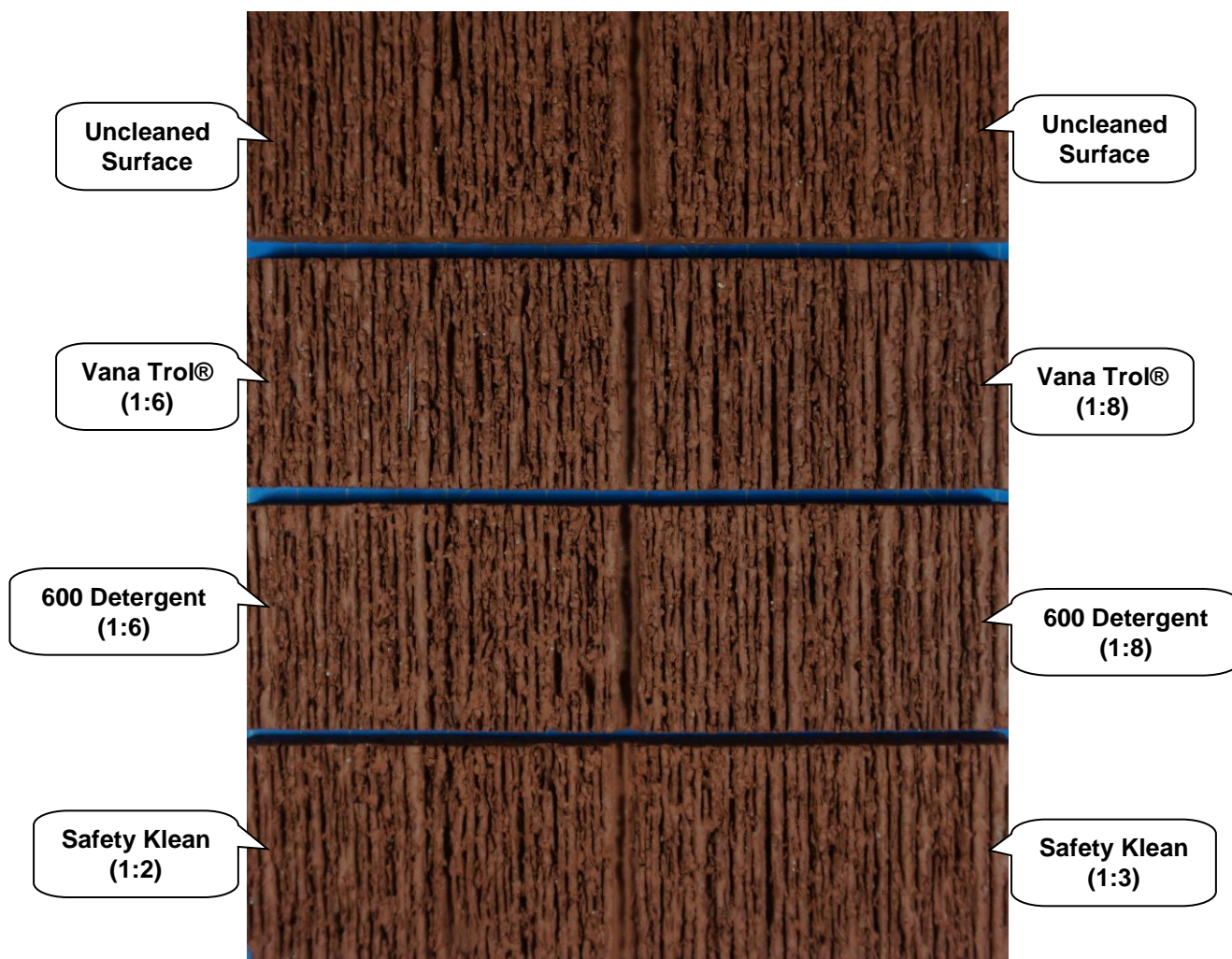
**"Tapestry Red Flashed" Brick After Cleaning**



**TEST RESULTS AND PHOTOGRAPHS: New Construction Cleaning (cont.)**

Name: "Tweedtex Red" Brick					
Product	Dilution	Surface Finish Removal	Substrate Deterioration	Color Change	Staining
Vana Trol®	1:6	0	0	0	0
Vana Trol®	1:8	0	0	0	0
600 Detergent	1:6	0	0	0	0
600 Detergent	1:8	0	0	0	0
Safety Klean	1:2	0	0	0	0
Safety Klean	1:3	0	0	0	0

**"Tweedtex Red" Brick After Cleaning**



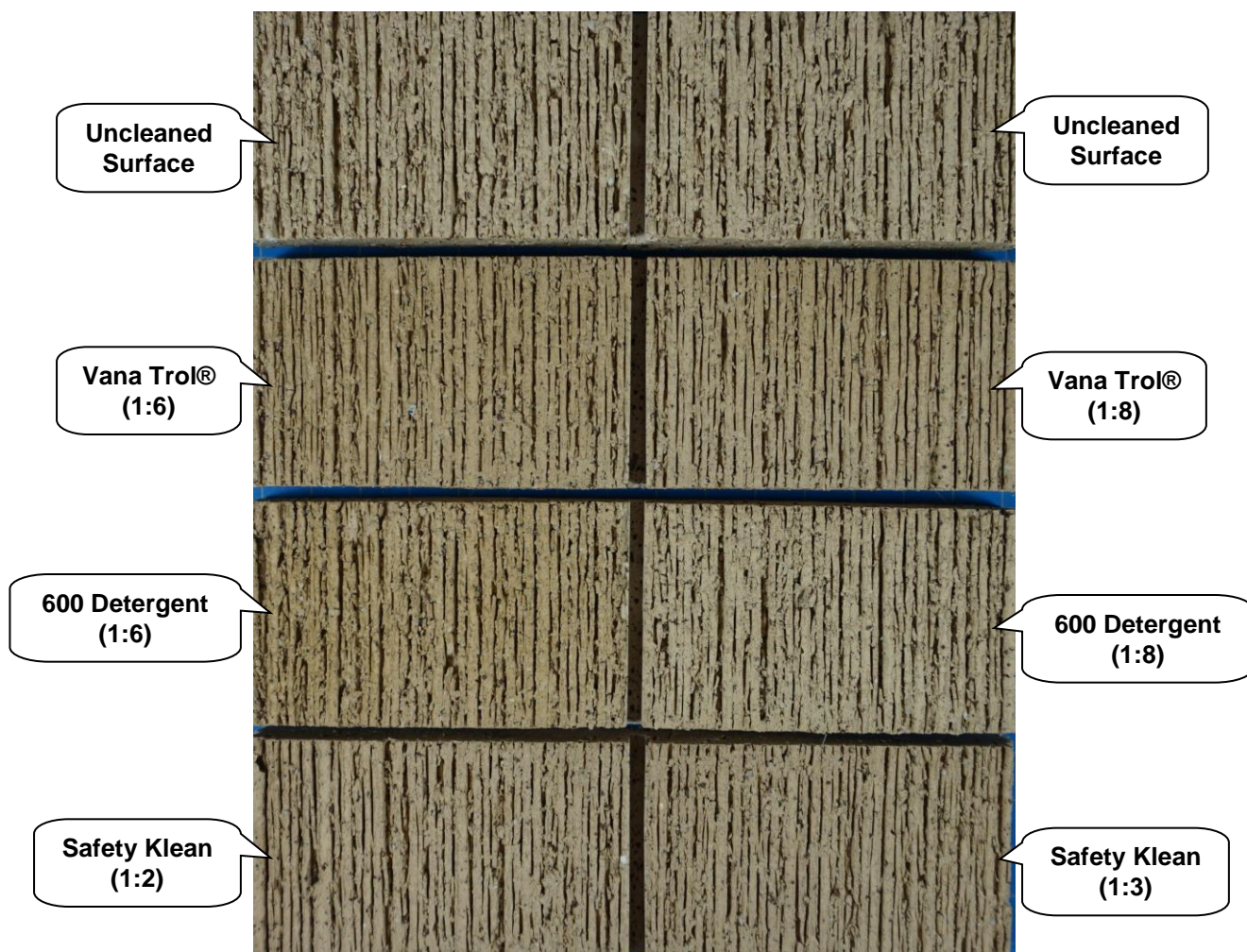


## TEST RESULTS AND PHOTOGRAPHS: New Construction Cleaning (cont.)

Name: "Tweedtex Buff" Brick					
Product	Dilution	Surface Finish Removal	Substrate Deterioration	Color Change	Staining
Vana Trol®	1:6	0	0	1	0
Vana Trol®	1:8	0	0	1*	0
600 Detergent	1:6	0	0	1	0
600 Detergent	1:8	0	0	0	0
Safety Klean	1:2	0	0	1	0
Safety Klean	1:3	0	0	1*	0

\*NOTE: Very slight change compared to uncleaned surface.

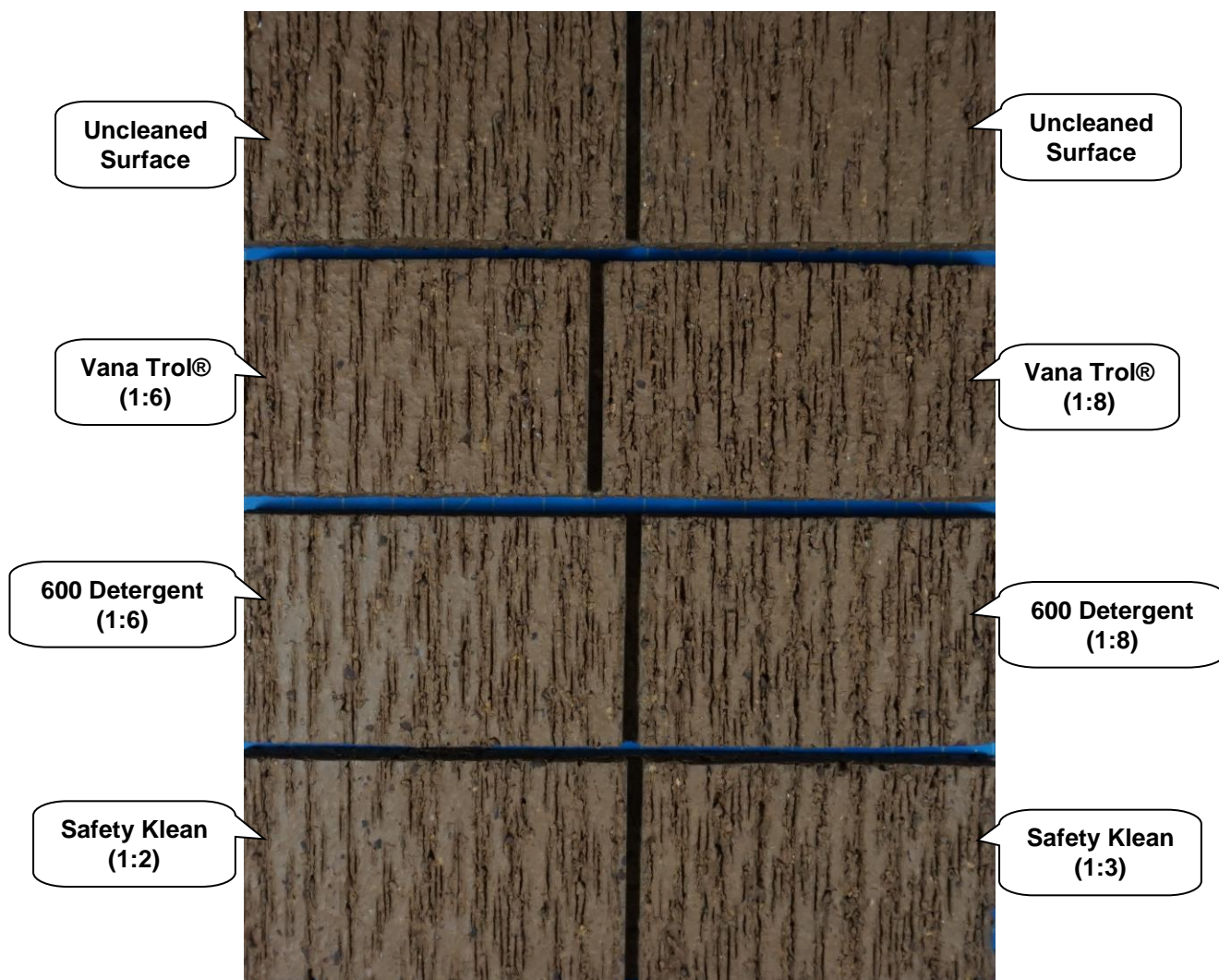
### "Tweedtex Buff" Brick After Cleaning



**TEST RESULTS AND PHOTOGRAPHS: New Construction Cleaning (cont.)**

Name: "Tweedtex Brown" Brick					
Product	Dilution	Surface Finish Removal	Substrate Deterioration	Color Change	Staining
Vana Trol®	1:6	0	0	0	0
Vana Trol®	1:8	0	0	0	0
600 Detergent	1:6	0	0	0	0
600 Detergent	1:8	0	0	0	0
Safety Klean	1:2	0	0	0	0
Safety Klean	1:3	0	0	0	0

**"Tweedtex Brown" Brick After Cleaning**

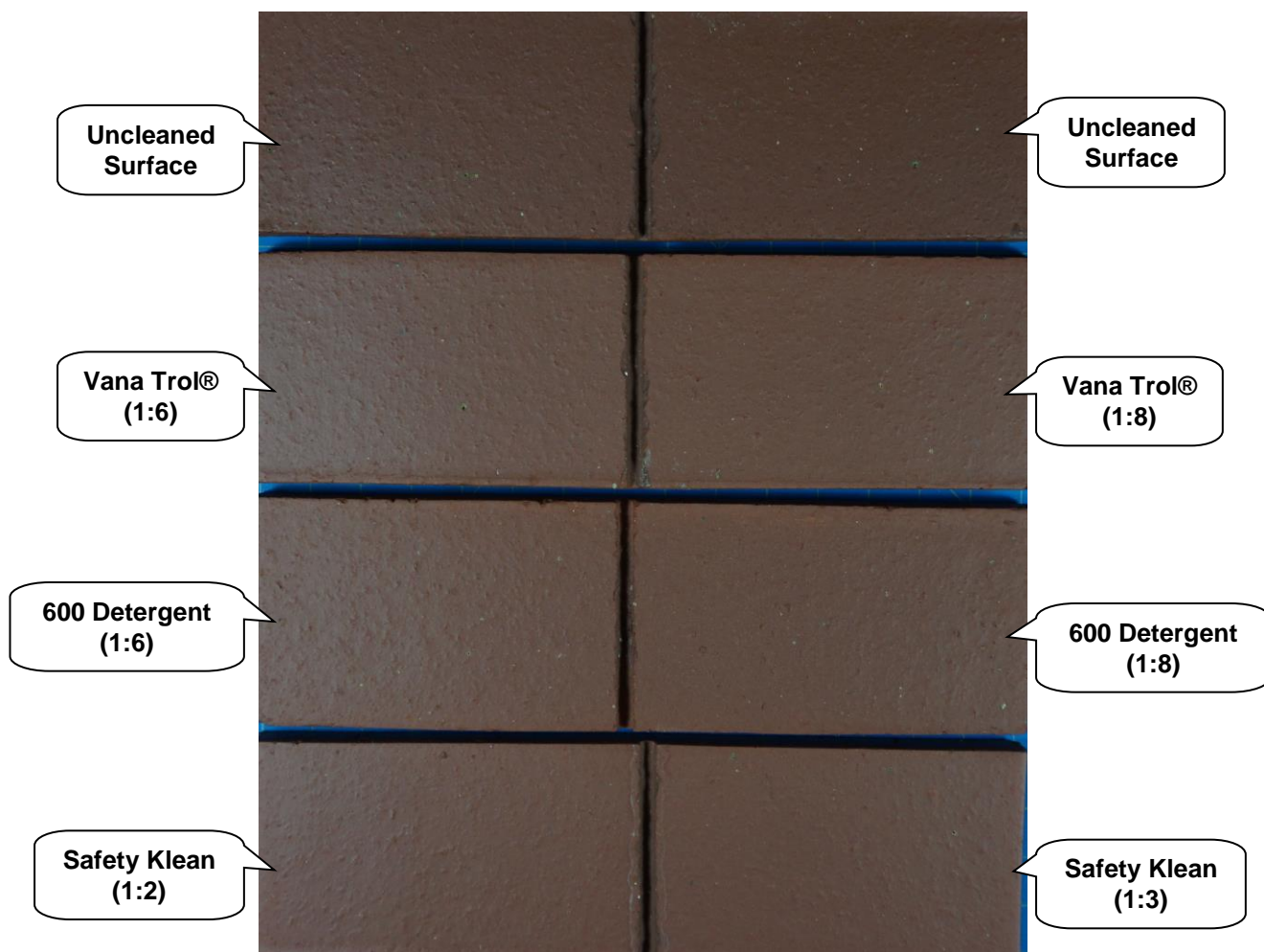




**TEST RESULTS AND PHOTOGRAPHS: New Construction Cleaning (cont.)**

Name: "Smooth Red" Brick					
Product	Dilution	Surface Finish Removal	Substrate Deterioration	Color Change	Staining
Vana Trol®	1:6	0	0	0	0
Vana Trol®	1:8	0	0	0	0
600 Detergent	1:6	0	0	0	0
600 Detergent	1:8	0	0	0	0
Safety Klean	1:2	0	0	0	0
Safety Klean	1:3	0	0	0	0

**"Smooth Red" Brick After Cleaning**

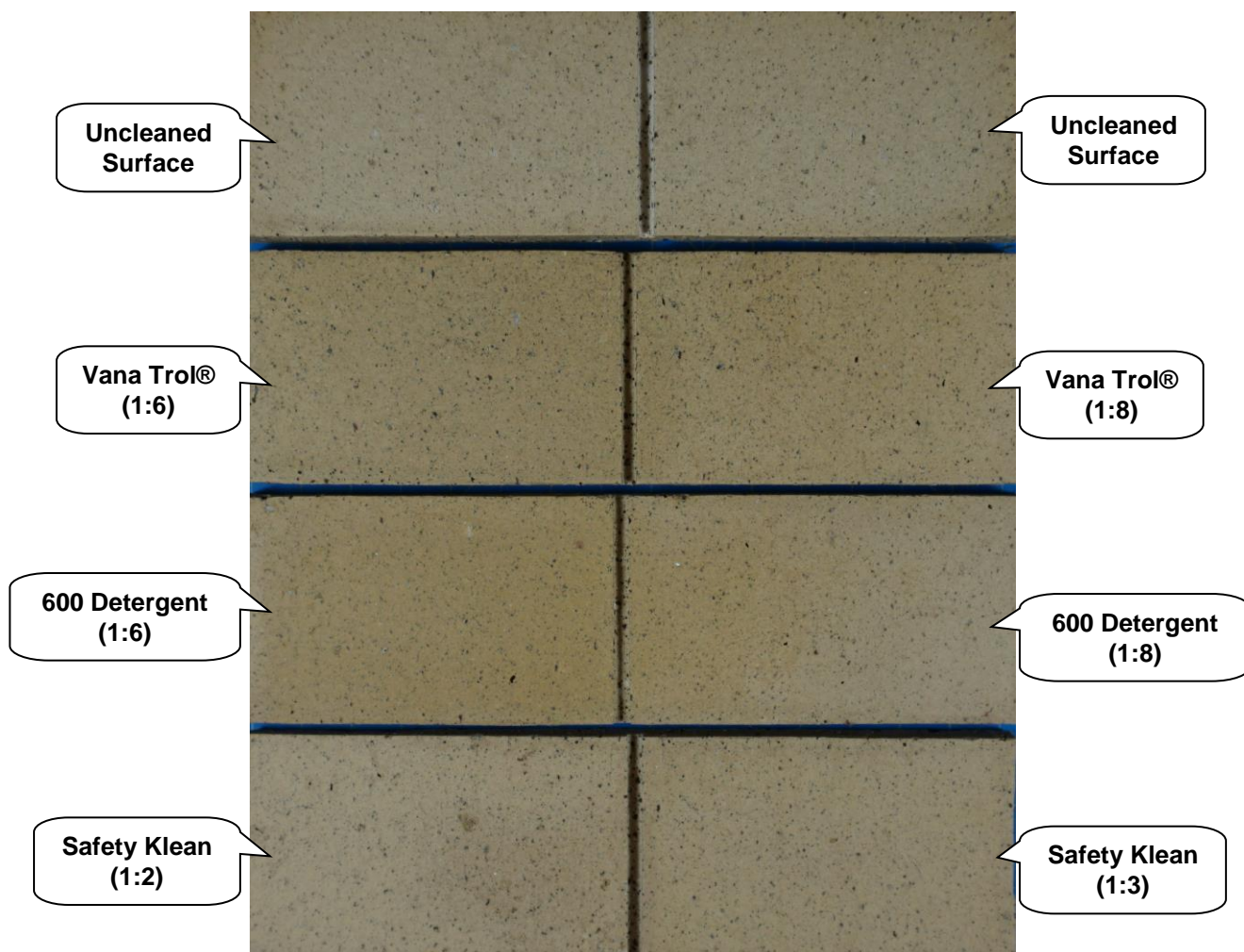


**TEST RESULTS AND PHOTOGRAPHS: New Construction Cleaning (cont.)**

Name: "Smooth Buff" Brick					
Product	Dilution	Surface Finish Removal	Substrate Deterioration	Color Change	Staining
Vana Trol®	1:6	0	0	1	0
Vana Trol®	1:8	0	0	1	0
600 Detergent	1:6	0	0	1	1
600 Detergent	1:8	0	0	1	1
Safety Klean	1:2	0	0	1*	0
Safety Klean	1:3	0	0	1*	0

**\*NOTE:** Very slight change compared to uncleaned surface.

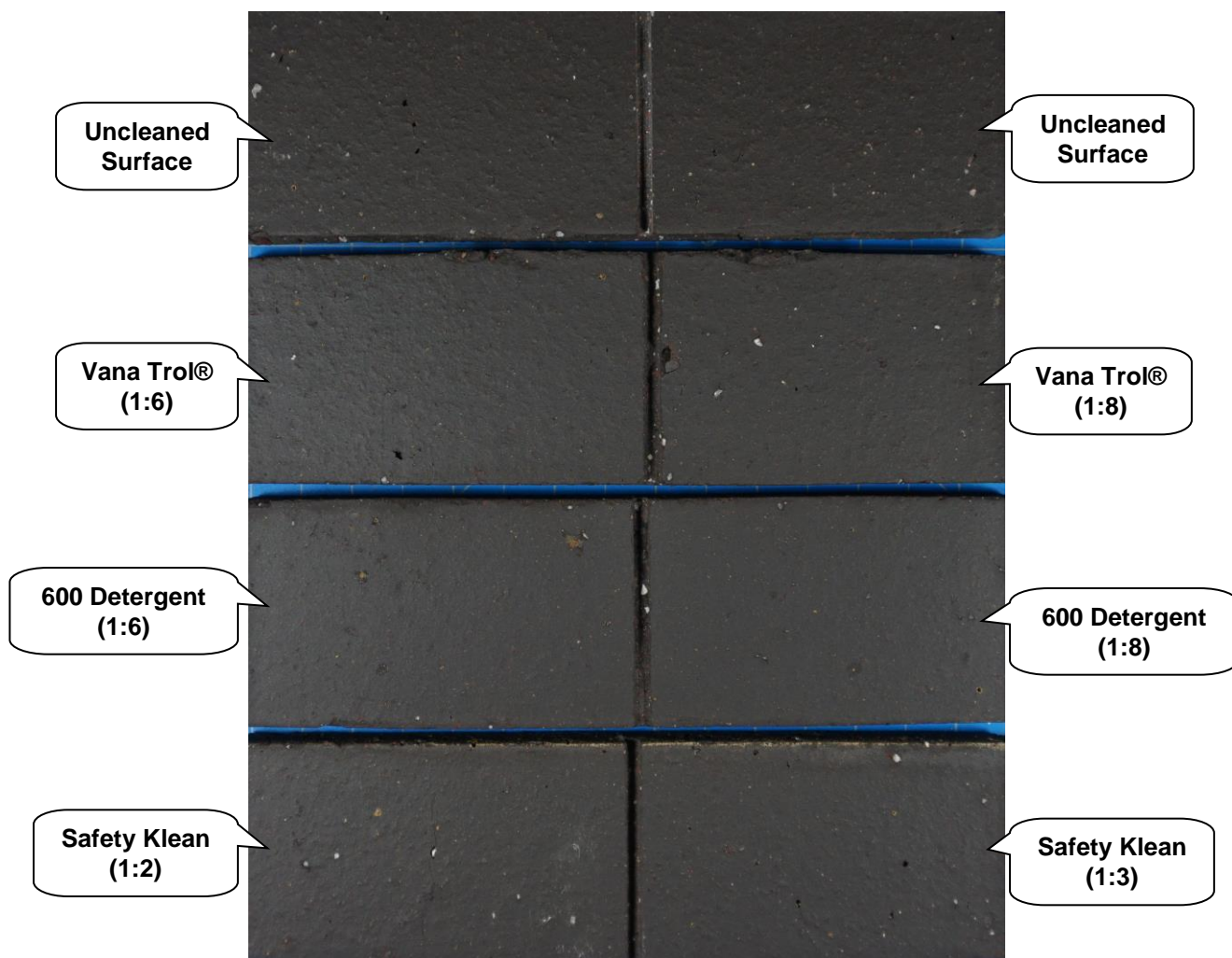
**"Smooth Buff" Brick After Cleaning**



**TEST RESULTS AND PHOTOGRAPHS: New Construction Cleaning (cont.)**

Name: "Smooth Manganese" Brick					
Product	Dilution	Surface Finish Removal	Substrate Deterioration	Color Change	Staining
Vana Trol®	1:6	0	0	0	0
Vana Trol®	1:8	0	0	0	0
600 Detergent	1:6	0	0	0	0
600 Detergent	1:8	0	0	0	0
Safety Klean	1:2	0	0	0	0
Safety Klean	1:3	0	0	0	0

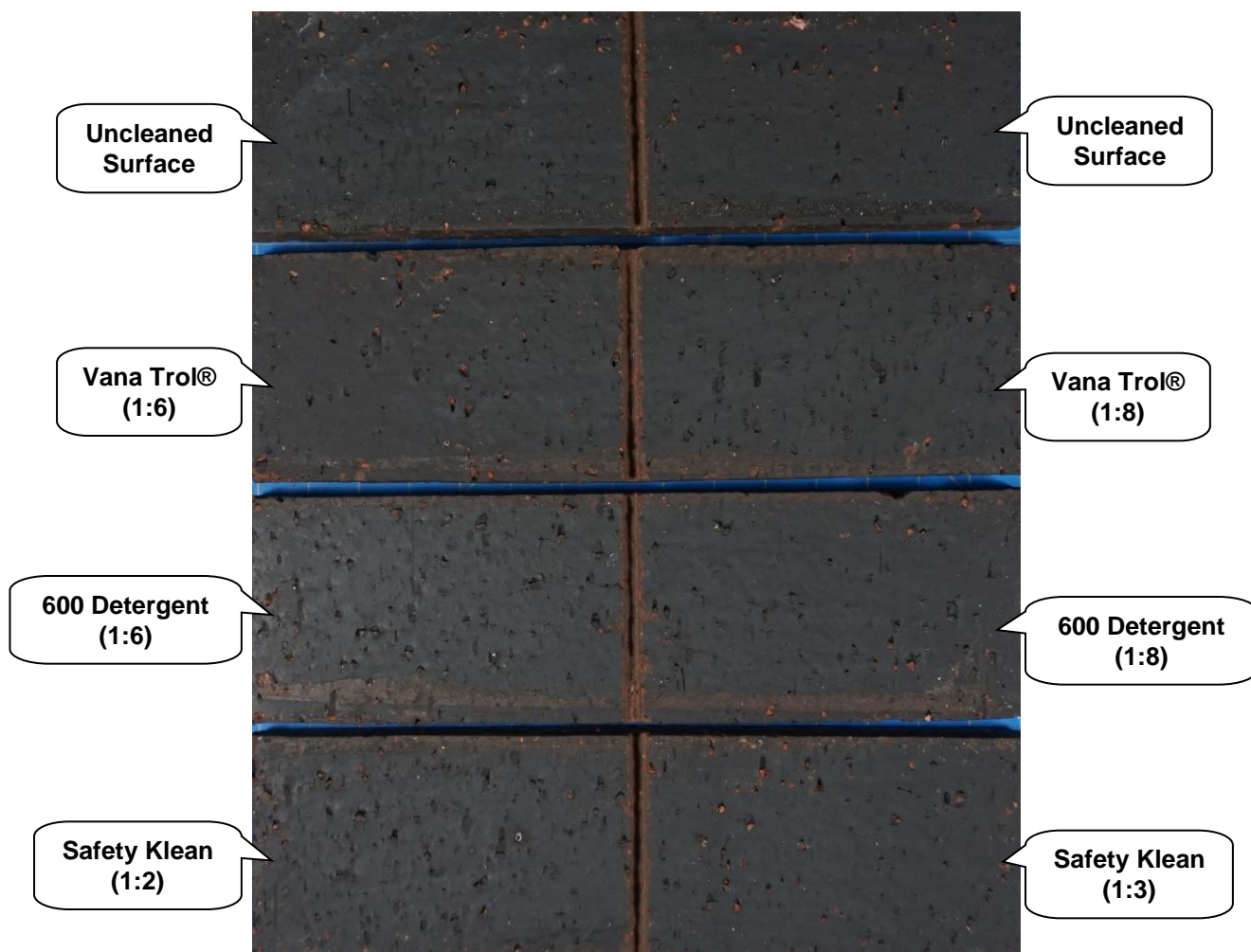
**"Smooth Manganese" Brick After Cleaning**



**TEST RESULTS AND PHOTOGRAPHS: New Construction Cleaning (cont.)**

Name: "Port Morien" Brick					
Product	Dilution	Surface Finish Removal	Substrate Deterioration	Color Change	Staining
Vana Trol®	1:6	0	0	0	0
Vana Trol®	1:8	0	0	0	0
600 Detergent	1:6	0	0	0	0
600 Detergent	1:8	0	0	0	0
Safety Klean	1:2	0	0	0	0
Safety Klean	1:3	0	0	0	0

**"Port Morien" Brick After Cleaning**

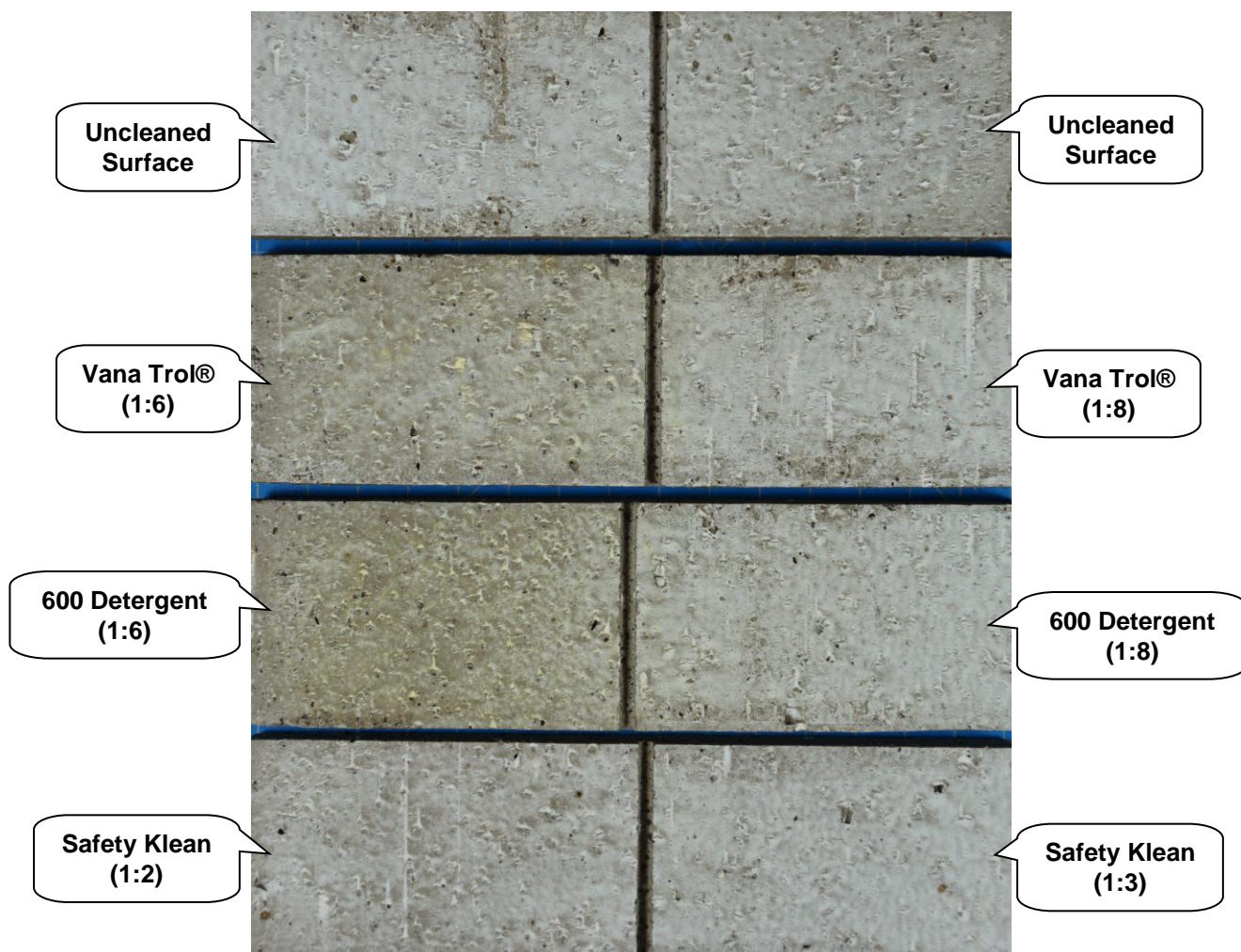




**TEST RESULTS AND PHOTOGRAPHS: New Construction Cleaning (cont.)**

Name: "Atlantic White Point" Brick					
Product	Dilution	Surface Finish Removal	Substrate Deterioration	Color Change	Staining
Vana Trol®	1:6	1	0	0	2
Vana Trol®	1:8	0	0	0	1
600 Detergent	1:6	2	0	0	2
600 Detergent	1:8	0	0	0	1
Safety Klean	1:2	0	0	0	0
Safety Klean	1:3	0	0	0	0

**"Atlantic White Point" Brick After Cleaning**

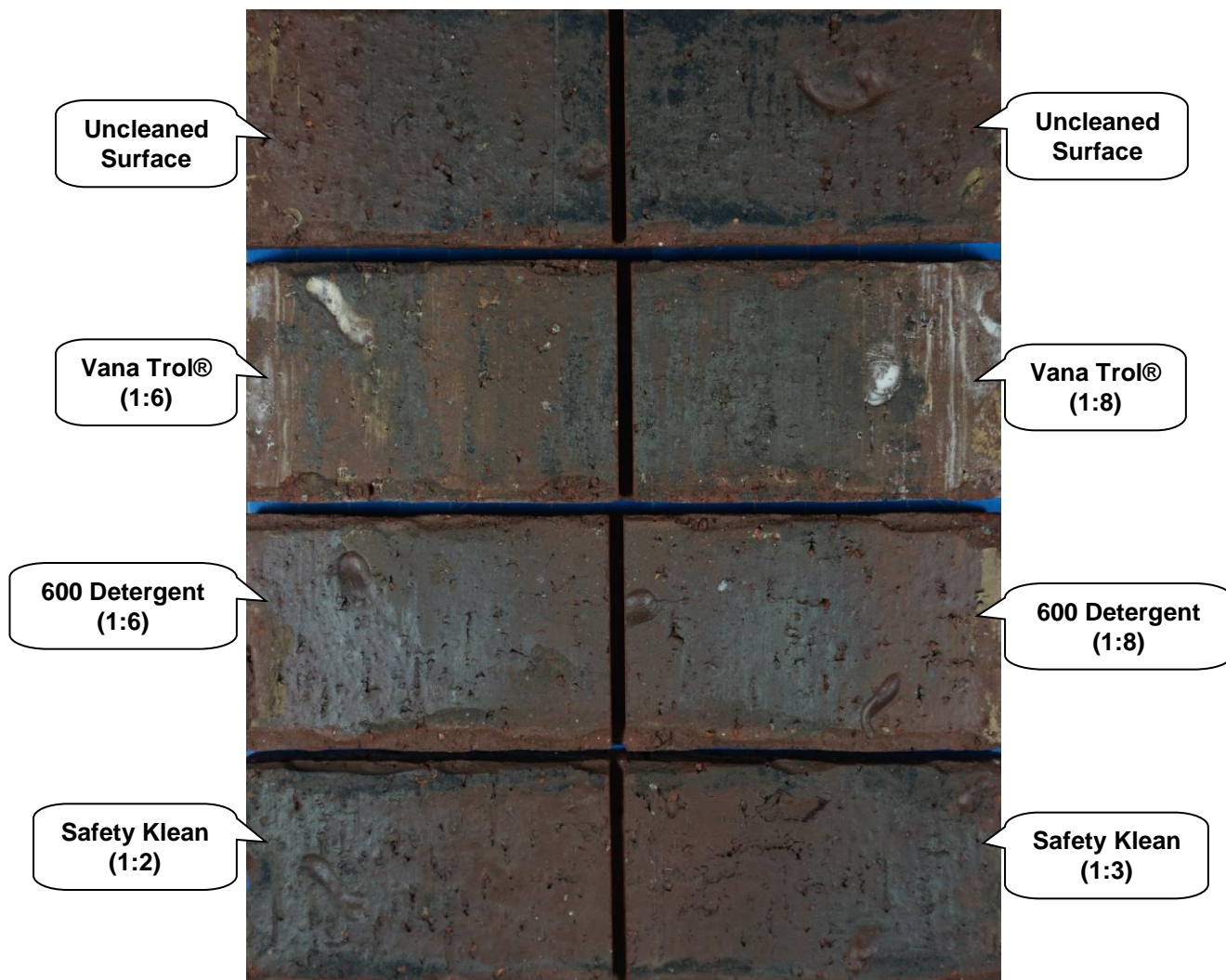




**TEST RESULTS AND PHOTOGRAPHS: New Construction Cleaning (cont.)**

Name: "Highland Kirkhill" Brick					
Product	Dilution	Surface Finish Removal	Substrate Deterioration	Color Change	Staining
Vana Trol®	1:6	1	0	1	0
Vana Trol®	1:8	1	0	1	0
600 Detergent	1:6	0	0	0	0
600 Detergent	1:8	0	0	0	0
Safety Klean	1:2	0	0	0	0
Safety Klean	1:3	0	0	0	0

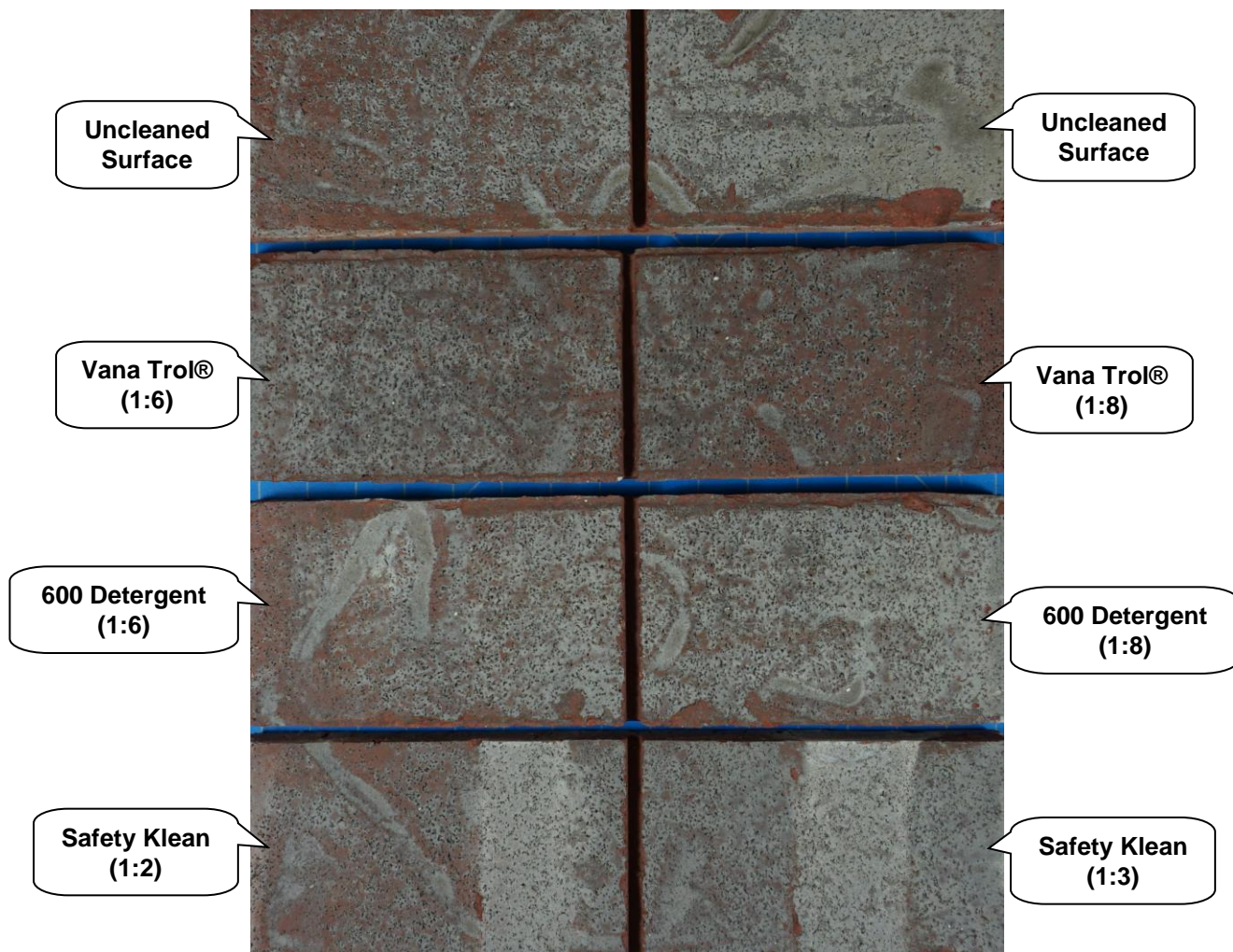
**"Highland Kirkhill" Brick After Cleaning**



**TEST RESULTS AND PHOTOGRAPHS: New Construction Cleaning (cont.)**

Name: "Antique Colonial" Brick					
Product	Dilution	Surface Finish Removal	Substrate Deterioration	Color Change	Staining
Vana Trol®	1:6	0	0	0	0
Vana Trol®	1:8	0	0	0	0
600 Detergent	1:6	0	0	0	0
600 Detergent	1:8	0	0	0	0
Safety Klean	1:2	0	0	0	0
Safety Klean	1:3	0	0	0	0

**"Antique Colonial" Brick After Cleaning**



## **CONCLUSIONS – New Construction Cleaning**

In most of the cleaning tests conducted, neither Sure Klean® Vana Trol® nor Sure Klean® 600 Detergent nor Enviro Klean® Safety Klean caused any significant changes to the appearance of the submitted samples with the following exceptions:

- Both dilutions of Sure Klean® Vana Trol® and Sure Klean® 600 Detergent resulted in a moderate to significant change to the appearance of the “Tapestry Buff” brick. Both dilutions resulted in a moderate to significant darkening of the “Tapestry Buff” brick sample.
- Sure Klean® Vana Trol® and Sure Klean® 600 Detergent resulted in a yellow discoloration on the “Atlantic White Point” brick.
- Sure Klean® 600 Detergent resulted in a discoloration on the “Smooth Buff” brick.

It is recommended that the selected cleaners always be used in the lowest possible concentration.

## RECOMMENDATIONS: New Construction Cleaning

Recommendations for cleaning for each brick submitted by Shaw Brick, Lantz, Nova Scotia are provided in the chart below. Recommendations are based on the cleaner and dilution that provided the best match to the uncleaned surface.

Sample	New Construction Cleaning
"Tapestry Red" Brick	Sure Klean® Vana Trol® (1:6) or (1:8) OR Sure Klean® 600 Detergent (1:6) or (1:8) OR Enviro Klean® Safety Klean (1:2) or (1:3)
"Tapestry Buff" Brick	Enviro Klean® Safety Klean (1:2) or (1:3)
"Tapestry Brown" Brick	Sure Klean® Vana Trol® (1:6) or (1:8) OR Sure Klean® 600 Detergent (1:6) or (1:8) OR Enviro Klean® Safety Klean (1:2) or (1:3)
"Tapestry Manganese" Brick	
"Tapestry Red Flashed" Brick	
"Tweedtex Red" Brick	
"Tweedtex Buff" Brick	
"Tweedtex Brown" Brick	
"Smooth Red" Brick	
"Smooth Buff" Brick	Sure Klean® Vana Trol® (1:6) or (1:8) OR Enviro Klean® Safety Klean (1:2) or (1:3)
"Smooth Manganese" Brick	Sure Klean® Vana Trol® (1:6) or (1:8) OR Sure Klean® 600 Detergent (1:6) or (1:8) OR Enviro Klean® Safety Klean (1:2) or (1:3)
"Port Morien" Brick	
"Atlantic White Point" Brick	Enviro Klean® Safety Klean (1:2) or (1:3)
"Highland Kirkhill" Brick	Sure Klean® Vana Trol® (1:6) or (1:8) OR Sure Klean® 600 Detergent (1:6) or (1:8) OR Enviro Klean® Safety Klean (1:2) or (1:3)
"Antique Colonial" Brick	

The most appropriate cleaner and dilution should be determined on the specific job-site, and will be dependent primarily on the nature and severity of soiling present at that location.

Apply all products in accordance with the manufacturer's recommendation provided on container labels and product data sheets. On-site testing should be conducted to determine the most appropriate cleaning product and procedures for a particular project. See product literature for additional application and product information.



## SAMPLE PREPARATION: Treatment Application

Prior to treatment application, the submitted samples were rinsed using masonry washing equipment generating approximately 700-800 psi with a water flow rate of 8 gallons per minute delivered through a 45 degree fan spray tip. After the samples were allowed to dry for at least 24 hours, the treatments were applied in a single brushing application in accordance with the current PROSOCO, Inc. Product Data Sheet instructions.

## TEST METHODS: Protective Water Repellents

### Water Absorption Tube Test: Vertical RILEM II.4, 5.0 milliliters, 20 minutes

The water absorption tube test simulating wind driven rain conditions was performed on the submitted samples. Tests were run with 5.0-milliliter head pressures. Filled to 5.0 milliliters, a water absorption tube produces a 98 mph dynamic wind pressure. See RILEM II.4 Tech Note for additional information.

The ranking system used to evaluate the effectiveness of the products applied to each submitted sample is as follows:

**AA** = "Above Average" correlates to less than or equal to 20% of the maximum untreated absorption.

**A** = "Average" correlates to less than or equal to 50% of the maximum untreated absorption.

**BA** = "Below Average" correlates to greater than 50% of the maximum untreated absorption.

**EXAMPLE:** If RILEM tubes applied to an untreated sample result in loss of 5.0 ml of water or more, then:

A rating of **AA** *Above Average* water repellent performance would be reported for treatments which result in a loss of no more than:

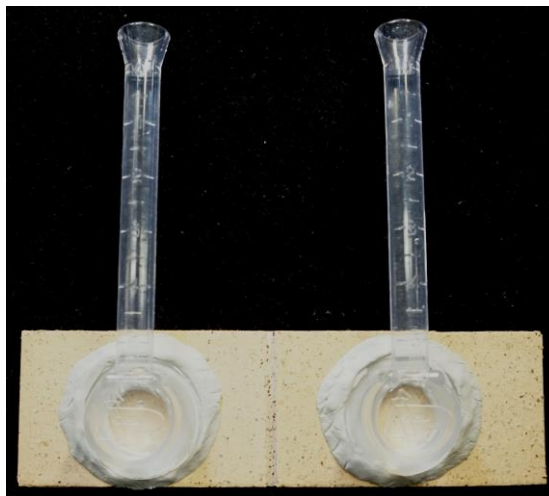
$$5.0 \text{ mL} \times 20\% = \mathbf{1.0 \text{ mL}}$$

A rating of **A** *Average* water repellent performance would be reported for treatments which result in a loss of no more than:

$$5.0 \text{ mL} \times 50\% = \mathbf{2.5 \text{ mL}}$$

A rating of **BA** *Below Average* water repellent performance would be reported for treatments which result in a loss of more than:

$$5.0 \text{ mL} \times 50\% = \mathbf{2.5 \text{ mL}}$$





## TEST RESULTS AND PHOTOGRAPHS: Protective Water Repellents

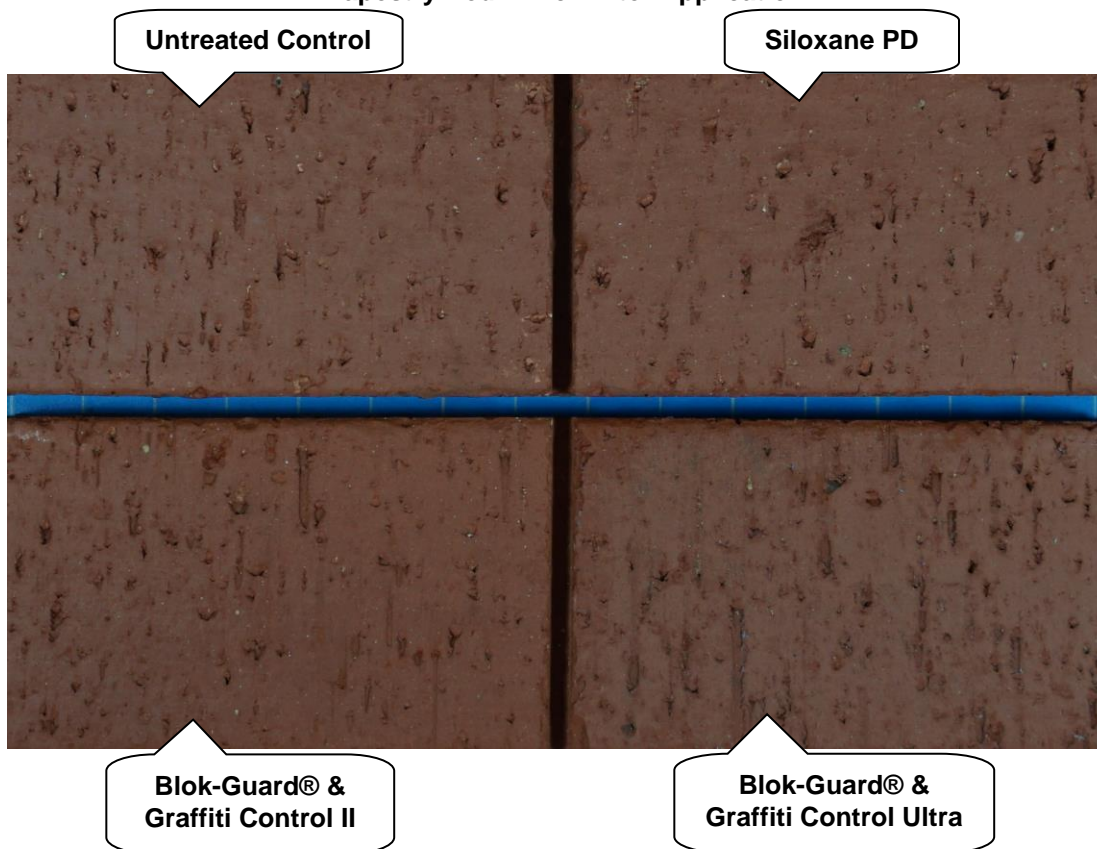
### Water Absorption Tube Test: Vertical RILEM II.4, 5.0 milliliters, 20 minutes

**AA** = Above Average    **A** = Average

**BA** = Below Average

"Tapestry Red" Brick	Results in mL loss	Ranking
Untreated Control	-0.0	--
Sure Klean® Weather Seal Siloxane PD	-0.0	<b>AA</b>
Sure Klean® Weather Seal Blok-Guard® & Graffiti Control II	-0.0	<b>AA</b>
Sure Klean® Weather Seal Blok-Guard® & Graffiti Control Ultra	-0.0	<b>AA</b>

### "Tapestry Red" Brick After Application



## TEST RESULTS AND PHOTOGRAPHS: Protective Water Repellents (cont.)

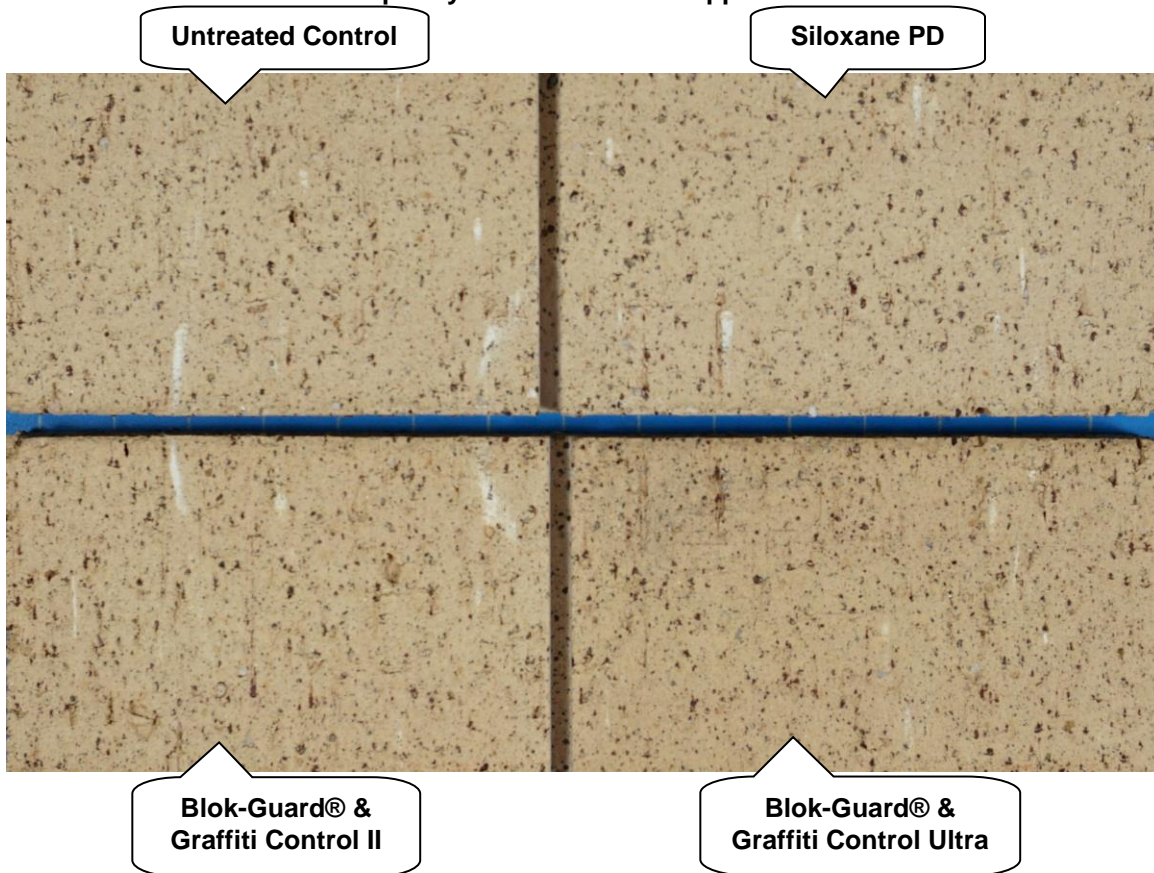
### Water Absorption Tube Test: Vertical RILEM II.4, 5.0 milliliters, 20 minutes

**AA** = Above Average    **A** = Average

**BA** = Below Average

"Tapestry Buff" Brick	Results in mL loss	Ranking
Untreated Control	-4.3	--
Sure Klean® Weather Seal Siloxane PD	-0.0	<b>AA</b>
Sure Klean® Weather Seal Blok-Guard® & Graffiti Control II	-0.0	<b>AA</b>
Sure Klean® Weather Seal Blok-Guard® & Graffiti Control Ultra	-0.0	<b>AA</b>

### "Tapestry Buff" Brick After Application



## TEST RESULTS AND PHOTOGRAPHS: Protective Water Repellents (cont.)

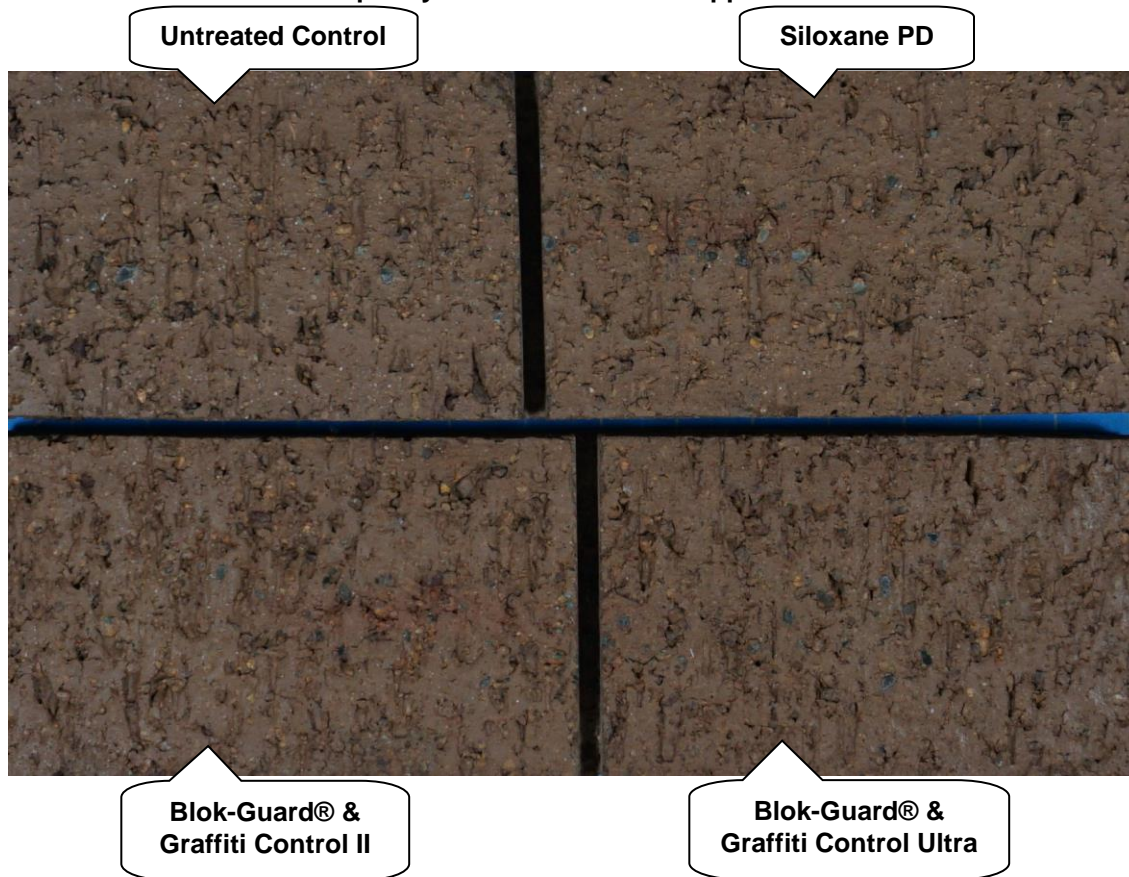
### Water Absorption Tube Test: Vertical RILEM II.4, 5.0 milliliters, 20 minutes

AA = Above Average    A = Average

BA = Below Average

"Tapestry Brown" Brick	Results in mL loss	Ranking
Untreated Control	-0.5	--
Sure Klean® Weather Seal Siloxane PD	-0.0	<u>AA</u>
Sure Klean® Weather Seal Blok-Guard® & Graffiti Control II	-0.1	<u>AA</u>
Sure Klean® Weather Seal Blok-Guard® & Graffiti Control Ultra	-0.1	<u>AA</u>

### "Tapestry Brown" Brick After Application





## TEST RESULTS AND PHOTOGRAPHS: Protective Water Repellents (cont.)

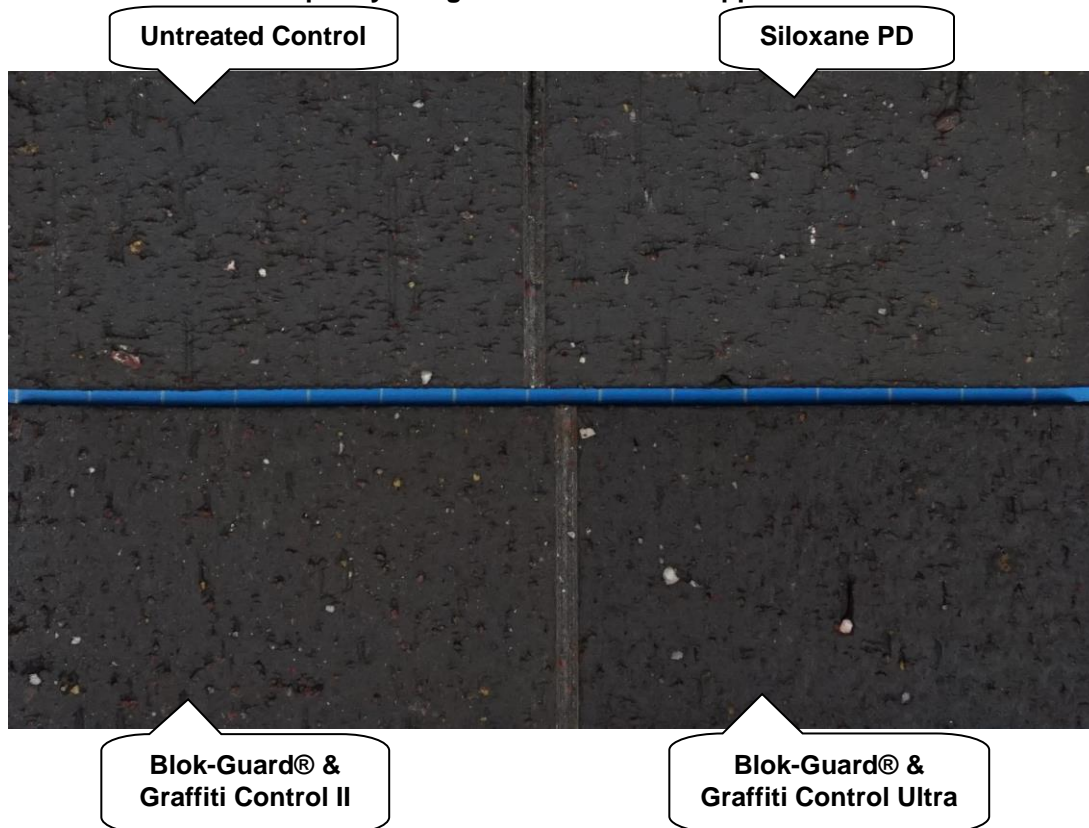
### Water Absorption Tube Test: Vertical RILEM II.4, 5.0 milliliters, 20 minutes

AA = Above Average    A = Average

BA = Below Average

"Tapestry Manganese" Brick	Results in mL loss	Ranking
Untreated Control	-0.0	--
Sure Klean® Weather Seal Siloxane PD	-0.0	<u>AA</u>
Sure Klean® Weather Seal Blok-Guard® & Graffiti Control II	-0.0	<u>AA</u>
Sure Klean® Weather Seal Blok-Guard® & Graffiti Control Ultra	-0.0	<u>AA</u>

### "Tapestry Manganese" Brick After Application



## TEST RESULTS AND PHOTOGRAPHS: Protective Water Repellents (cont.)

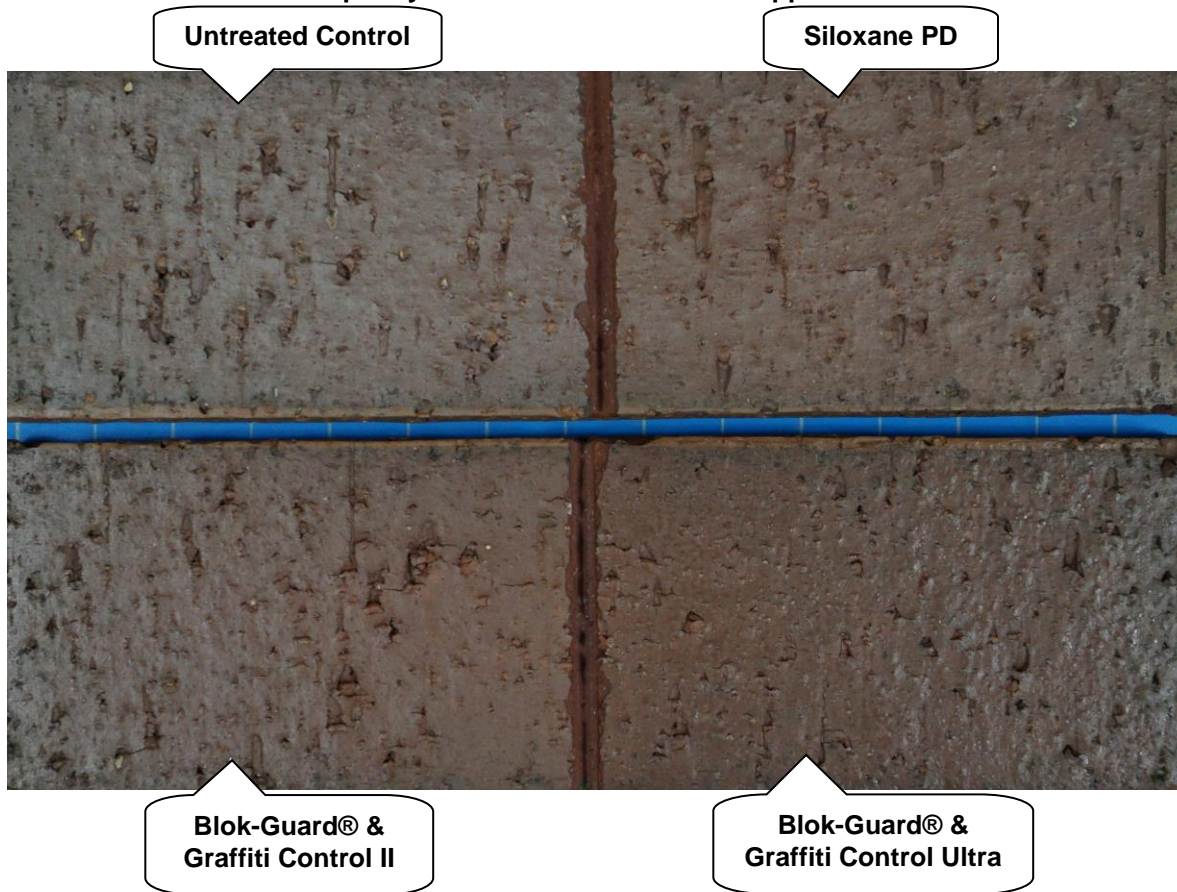
### Water Absorption Tube Test: Vertical RILEM II.4, 5.0 milliliters, 20 minutes

AA = Above Average    A = Average

BA = Below Average

"Tapestry Red Flashed" Brick	Results in mL loss	Ranking
Untreated Control	-0.0	--
Sure Klean® Weather Seal Siloxane PD	-0.0	<u>AA</u>
Sure Klean® Weather Seal Blok-Guard® & Graffiti Control II	-0.0	<u>AA</u>
Sure Klean® Weather Seal Blok-Guard® & Graffiti Control Ultra	-0.0	<u>AA</u>

### "Tapestry Red Flashed" Brick After Application





## TEST RESULTS AND PHOTOGRAPHS: Protective Water Repellents (cont.)

### Water Absorption Tube Test: Vertical RILEM II.4, 5.0 milliliters, 20 minutes

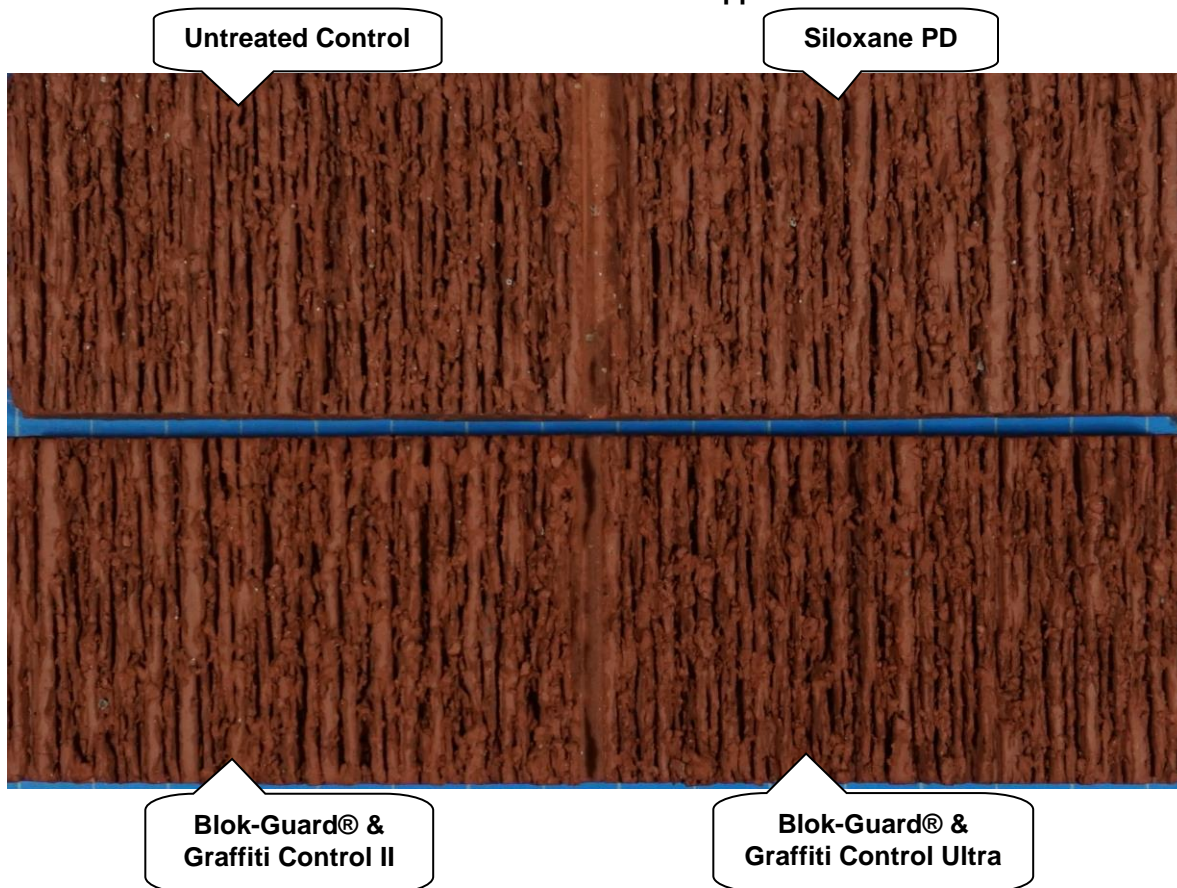
**AA** = Above Average    **A** = Average

**BA** = Below Average

"Tweedtex Red" Brick	Results in mL loss	Ranking
Untreated Control	N/A*	--
Sure Klean® Weather Seal Siloxane PD	N/A*	--
Sure Klean® Weather Seal Blok-Guard® & Graffiti Control II	N/A*	--
Sure Klean® Weather Seal Blok-Guard® & Graffiti Control Ultra	N/A*	--

**\*NOTE:** Due to the irregular surface texture present, water absorption tube testing was unable to be performed.

### "Tweedtex Red" Brick After Application



## TEST RESULTS AND PHOTOGRAPHS: Protective Water Repellents (cont.)

### Water Absorption Tube Test: Vertical RILEM II.4, 5.0 milliliters, 20 minutes

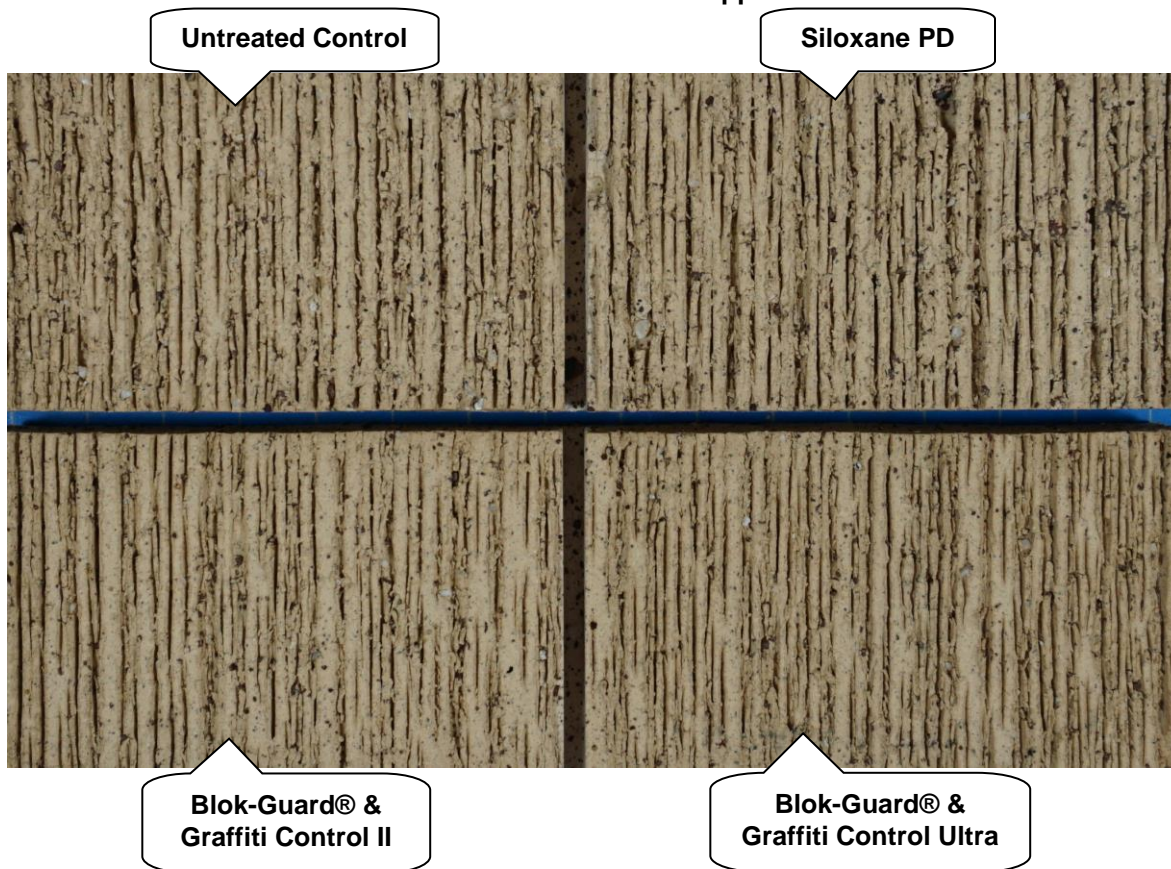
**AA** = Above Average    **A** = Average

**BA** = Below Average

"Tweedtex Buff" Brick	Results in mL loss	Ranking
Untreated Control	N/A*	--
Sure Klean® Weather Seal Siloxane PD	N/A*	--
Sure Klean® Weather Seal Blok-Guard® & Graffiti Control II	N/A*	--
Sure Klean® Weather Seal Blok-Guard® & Graffiti Control Ultra	N/A*	--

**\*NOTE:** Due to the irregular surface texture present, water absorption tube testing was unable to be performed.

### "Tweedtex Buff" Brick After Application





## TEST RESULTS AND PHOTOGRAPHS: Protective Water Repellents (cont.)

### Water Absorption Tube Test: Vertical RILEM II.4, 5.0 milliliters, 20 minutes

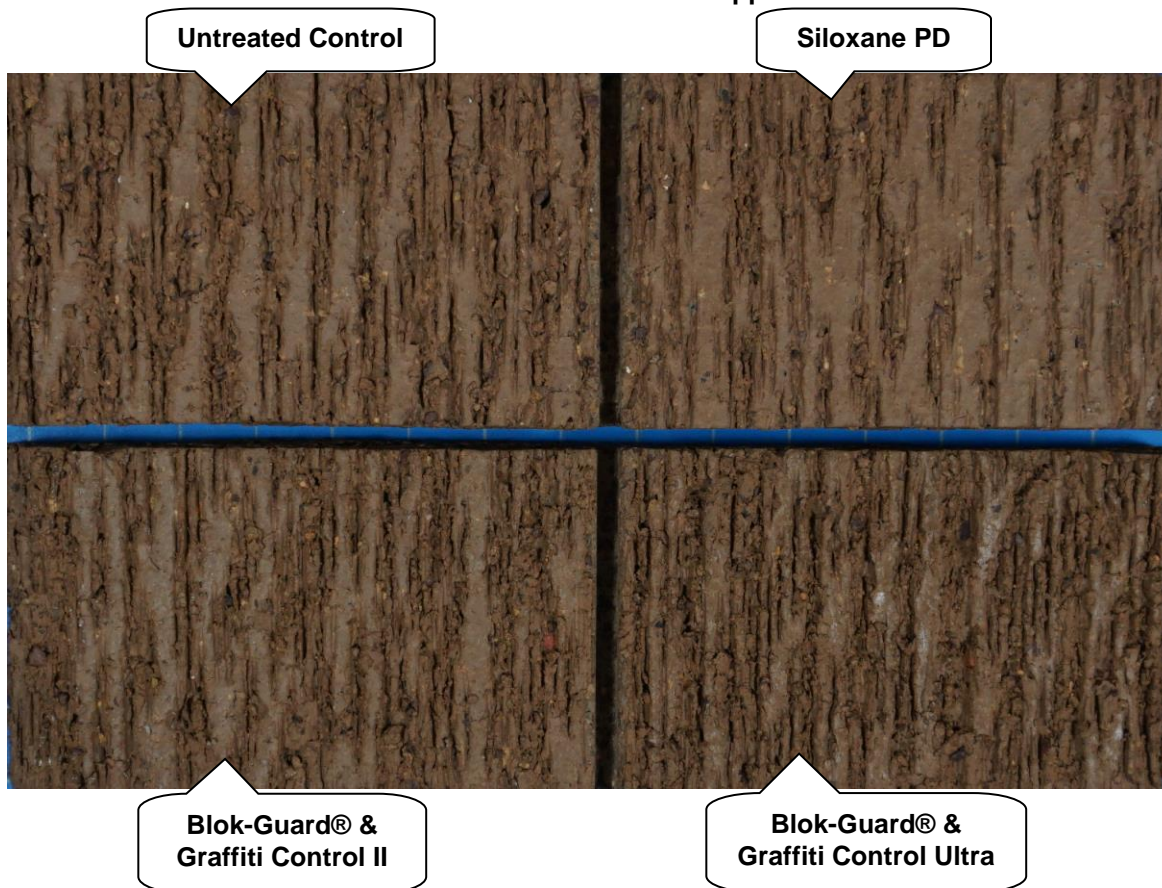
**AA** = Above Average    **A** = Average

**BA** = Below Average

"Tweedtex Brown" Brick	Results in mL loss	Ranking
Untreated Control	N/A*	--
Sure Klean® Weather Seal Siloxane PD	N/A*	--
Sure Klean® Weather Seal Blok-Guard® & Graffiti Control II	N/A*	--
Sure Klean® Weather Seal Blok-Guard® & Graffiti Control Ultra	N/A*	--

**\*NOTE:** Due to the irregular surface texture present, water absorption tube testing was unable to be performed.

### "Tweedtex Brown" Brick After Application



## TEST RESULTS AND PHOTOGRAPHS: Protective Water Repellents (cont.)

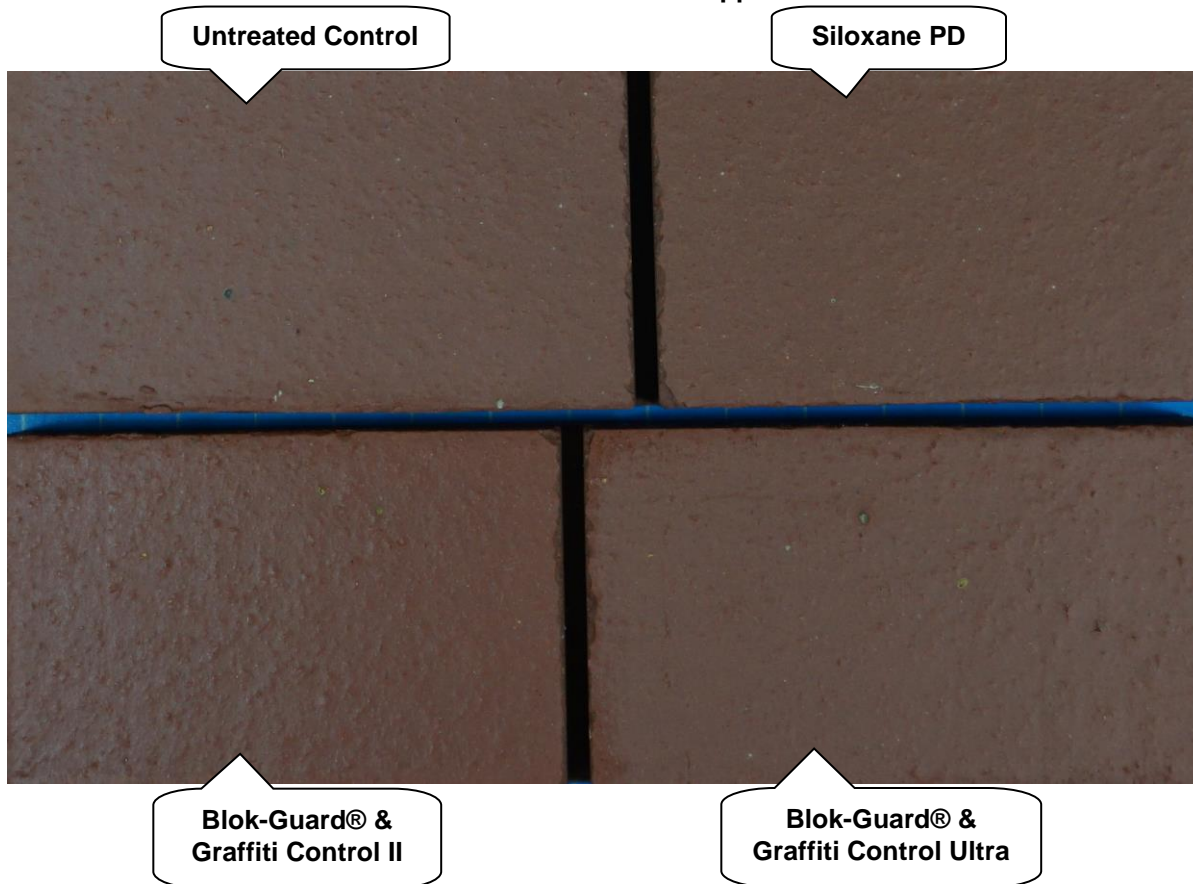
### Water Absorption Tube Test: Vertical RILEM II.4, 5.0 milliliters, 20 minutes

**AA** = Above Average    **A** = Average

**BA** = Below Average

"Smooth Red" Brick	Results in mL loss	Ranking
Untreated Control	-0.0	--
Sure Klean® Weather Seal Siloxane PD	-0.0	<b>AA</b>
Sure Klean® Weather Seal Blok-Guard® & Graffiti Control II	-0.0	<b>AA</b>
Sure Klean® Weather Seal Blok-Guard® & Graffiti Control Ultra	-0.0	<b>AA</b>

### "Smooth Red" Brick After Application





## TEST RESULTS AND PHOTOGRAPHS: Protective Water Repellents (cont.)

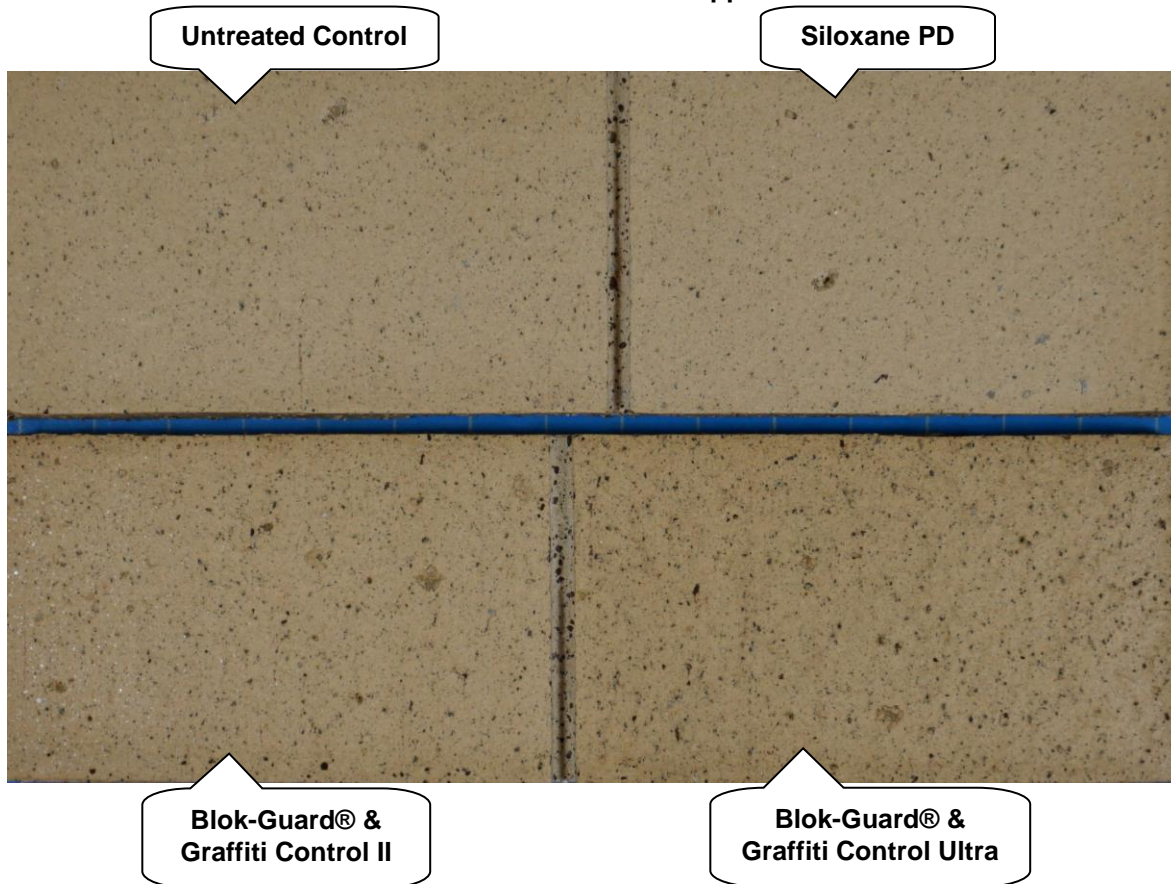
### Water Absorption Tube Test: Vertical RILEM II.4, 5.0 milliliters, 20 minutes

**AA** = Above Average    **A** = Average

**BA** = Below Average

"Smooth Buff" Brick	Results in mL loss	Ranking
Untreated Control	-2.4	--
Sure Klean® Weather Seal Siloxane PD	-0.0	<b>AA</b>
Sure Klean® Weather Seal Blok-Guard® & Graffiti Control II	-0.0	<b>AA</b>
Sure Klean® Weather Seal Blok-Guard® & Graffiti Control Ultra	-0.0	<b>AA</b>

### "Smooth Buff" Brick After Application



## TEST RESULTS AND PHOTOGRAPHS: Protective Water Repellents (cont.)

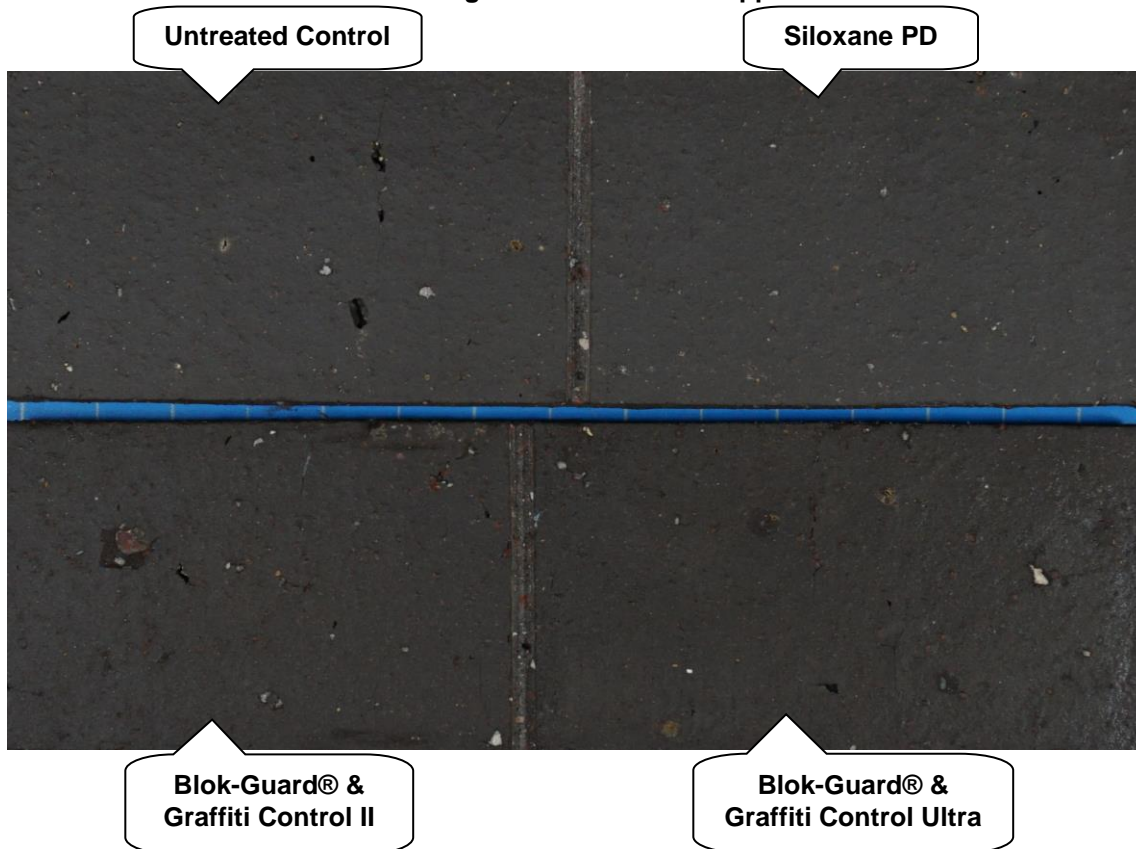
### Water Absorption Tube Test: Vertical RILEM II.4, 5.0 milliliters, 20 minutes

**AA** = Above Average    **A** = Average

**BA** = Below Average

"Smooth Manganese" Brick	Results in mL loss	Ranking
Untreated Control	-0.8	--
Sure Klean® Weather Seal Siloxane PD	-0.0	<b>AA</b>
Sure Klean® Weather Seal Blok-Guard® & Graffiti Control II	-0.0	<b>AA</b>
Sure Klean® Weather Seal Blok-Guard® & Graffiti Control Ultra	-0.5	<b>BA</b>

### "Smooth Manganese" Brick After Application



## TEST RESULTS AND PHOTOGRAPHS: Protective Water Repellents (cont.)

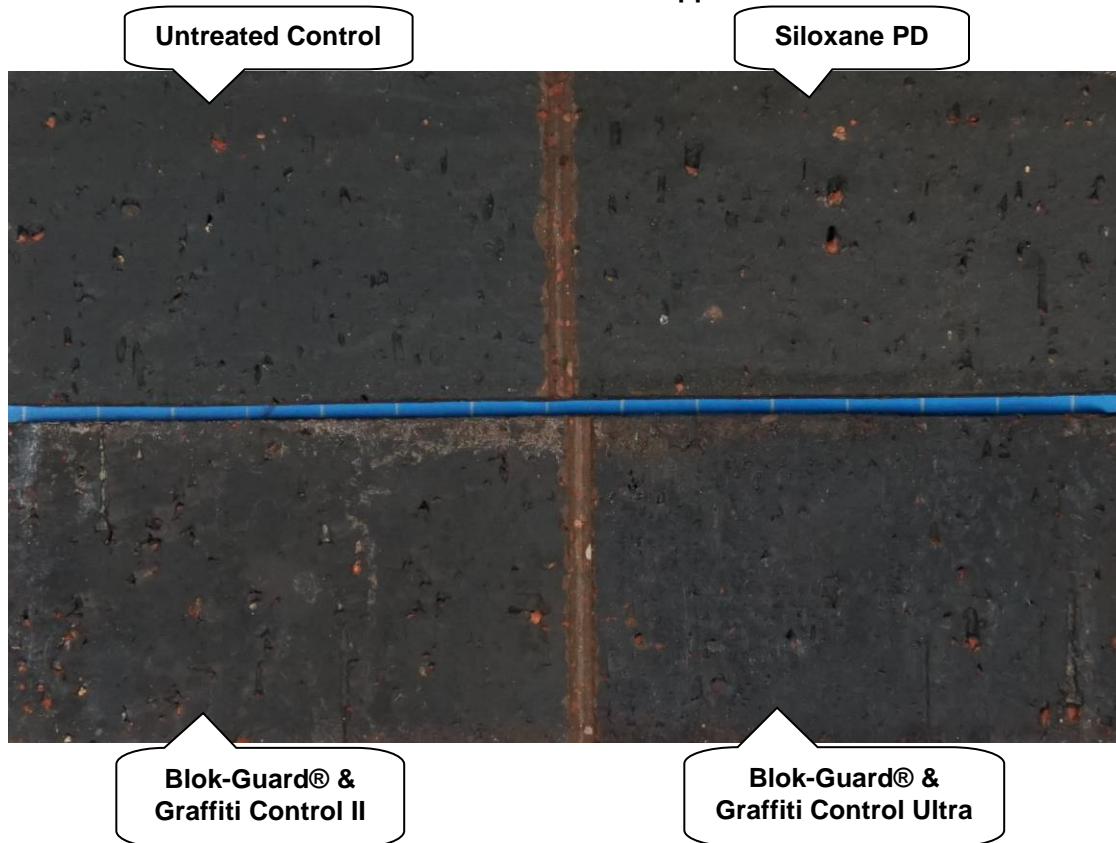
Water Absorption Tube Test: Vertical RILEM II.4, 5.0 milliliters, 20 minutes

AA = Above Average    A = Average

BA = Below Average

"Port Morien" Brick	Results in mL loss	Ranking
Untreated Control	-0.0	--
Sure Klean® Weather Seal Siloxane PD	-0.0	<u>AA</u>
Sure Klean® Weather Seal Blok-Guard® & Graffiti Control II	-0.0	<u>AA</u>
Sure Klean® Weather Seal Blok-Guard® & Graffiti Control Ultra	-0.0	<u>AA</u>

"Port Morien" Brick After Application



## TEST RESULTS AND PHOTOGRAPHS: Protective Water Repellents (cont.)

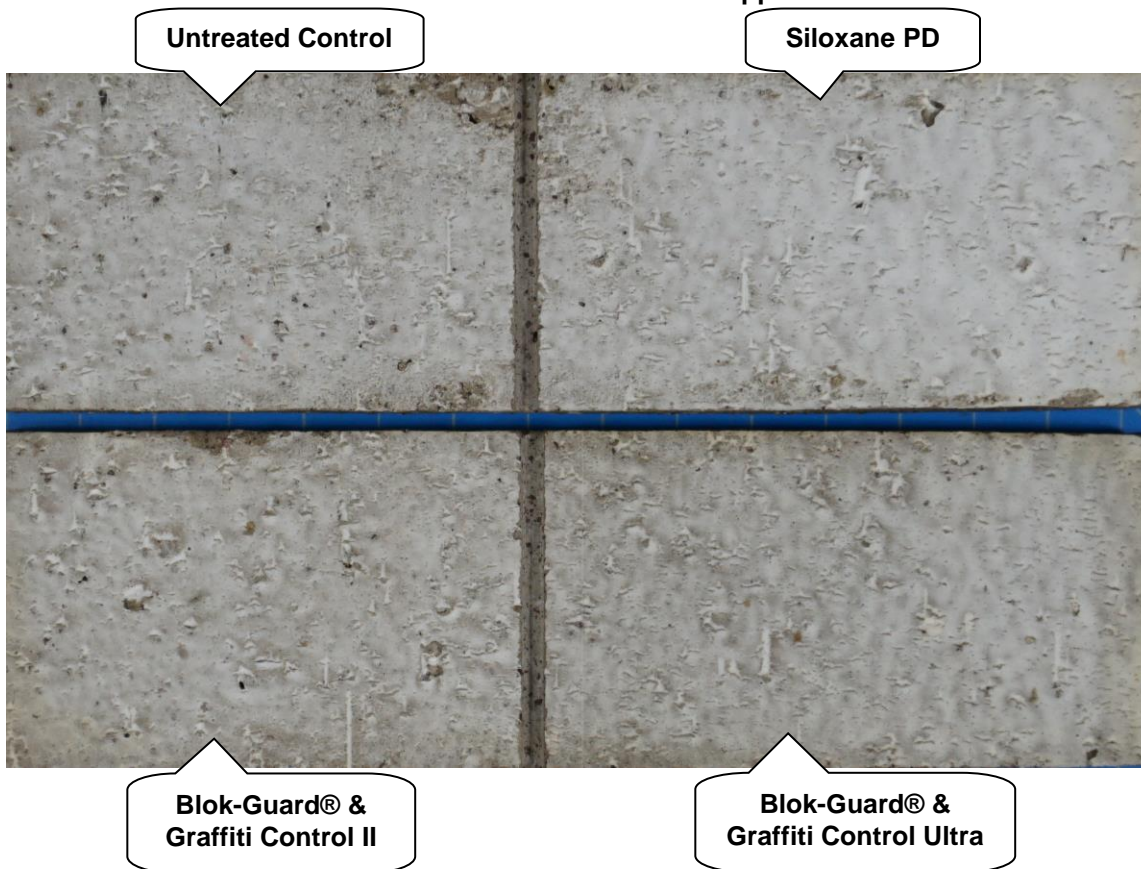
### Water Absorption Tube Test: Vertical RILEM II.4, 5.0 milliliters, 20 minutes

**AA** = Above Average    **A** = Average

**BA** = Below Average

"Atlantic White Point" Brick	Results in mL loss	Ranking
Untreated Control	-1.0	--
Sure Klean® Weather Seal Siloxane PD	-0.0	<b>AA</b>
Sure Klean® Weather Seal Blok-Guard® & Graffiti Control II	-0.0	<b>AA</b>
Sure Klean® Weather Seal Blok-Guard® & Graffiti Control Ultra	-0.0	<b>AA</b>

### "Atlantic White Point" Brick After Application





## TEST RESULTS AND PHOTOGRAPHS: Protective Water Repellents (cont.)

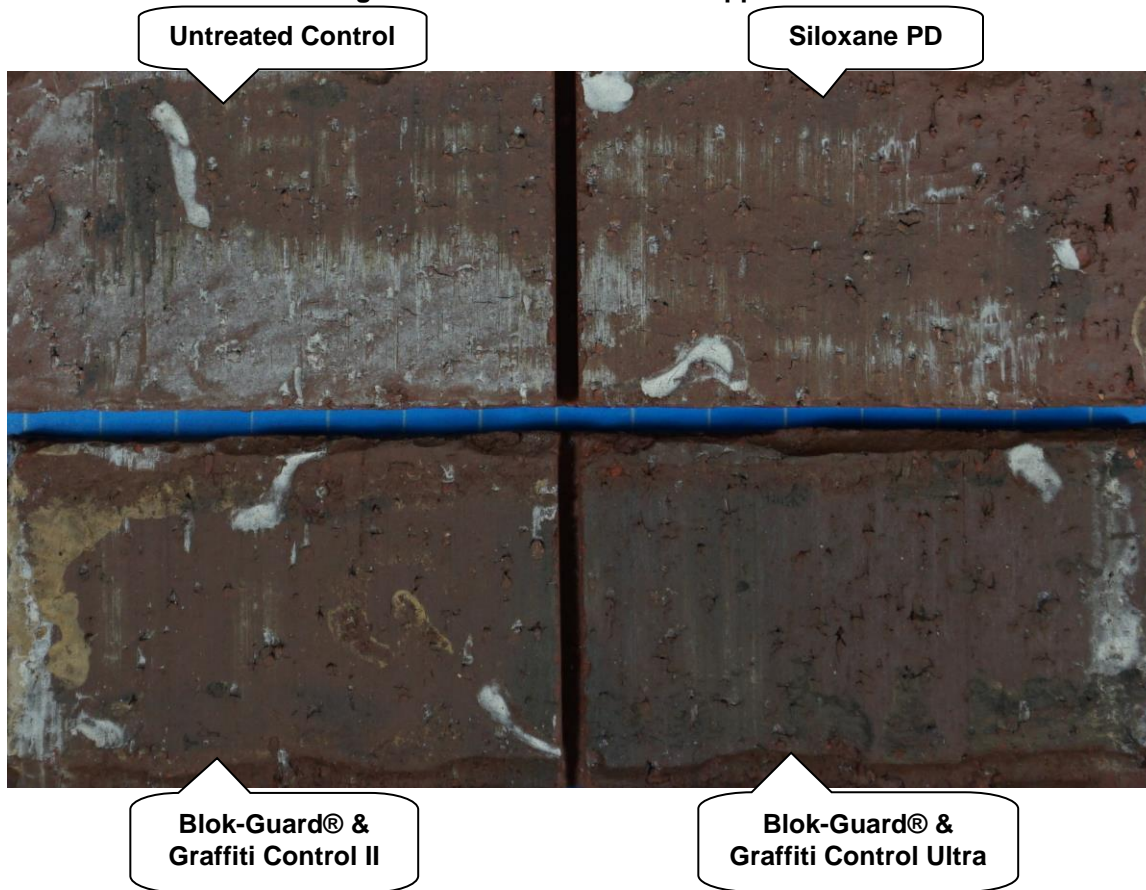
### Water Absorption Tube Test: Vertical RILEM II.4, 5.0 milliliters, 20 minutes

AA = Above Average    A = Average

BA = Below Average

"Highland Kirkhill" Brick	Results in mL loss	Ranking
Untreated Control	-0.0	--
Sure Klean® Weather Seal Siloxane PD	-0.0	<u>AA</u>
Sure Klean® Weather Seal Blok-Guard® & Graffiti Control II	-0.0	<u>AA</u>
Sure Klean® Weather Seal Blok-Guard® & Graffiti Control Ultra	-0.0	<u>AA</u>

### "Highland Kirkhill" Brick After Application



## TEST RESULTS AND PHOTOGRAPHS: Protective Water Repellents (cont.)

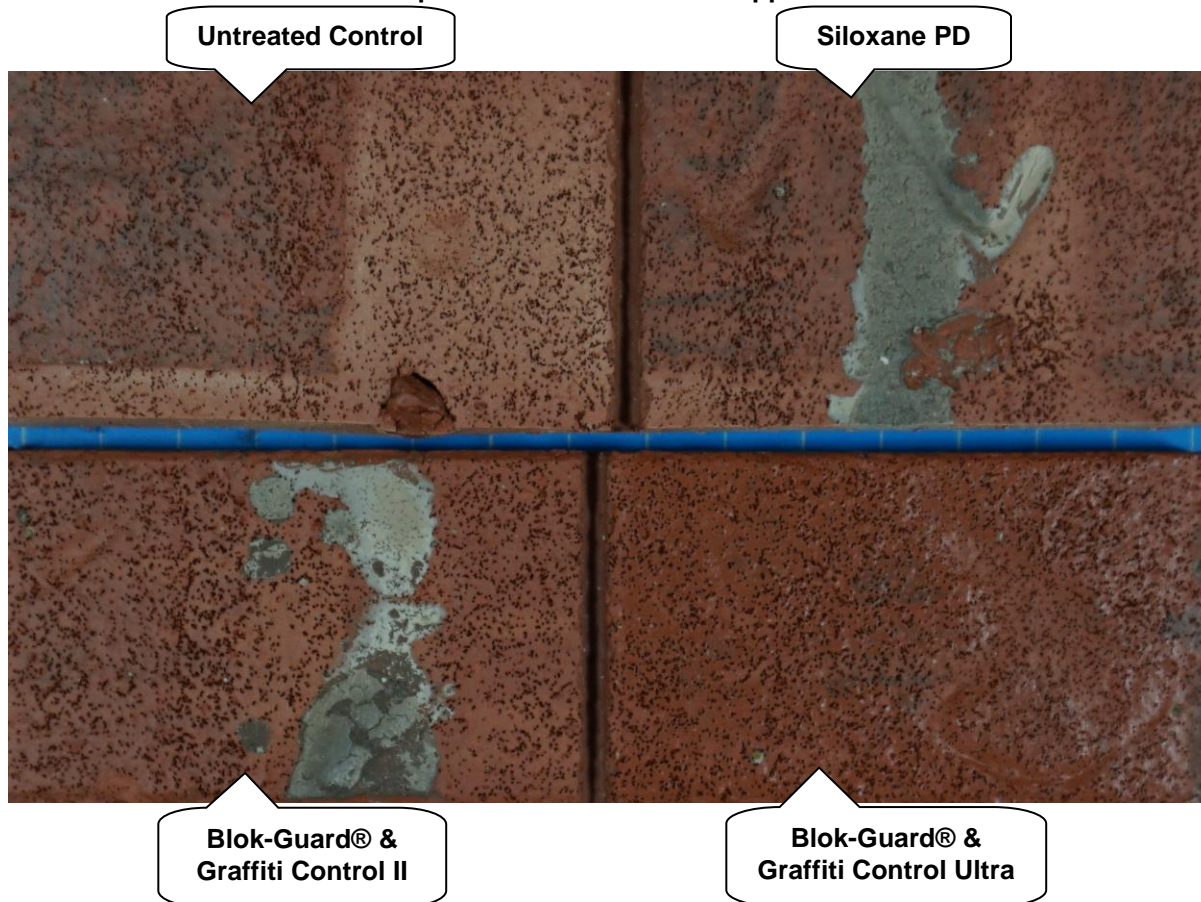
Water Absorption Tube Test: Vertical RILEM II.4, 5.0 milliliters, 20 minutes

AA = Above Average    A = Average

BA = Below Average

"Antique Colonial" Brick	Results in mL loss	Ranking
Untreated Control	-0.0	--
Sure Klean® Weather Seal Siloxane PD	-0.0	<u>AA</u>
Sure Klean® Weather Seal Blok-Guard® & Graffiti Control II	-0.0	<u>AA</u>
Sure Klean® Weather Seal Blok-Guard® & Graffiti Control Ultra	-0.0	<u>AA</u>

"Antique Colonial" Brick After Application



## CONCLUSIONS: Protective Water Repellents

Based on the laboratory evaluations, most of the treatments provided good water repellent protection to the submitted samples.

Sure Klean® Weather Seal Siloxane PD caused no change in appearance to the submitted samples.

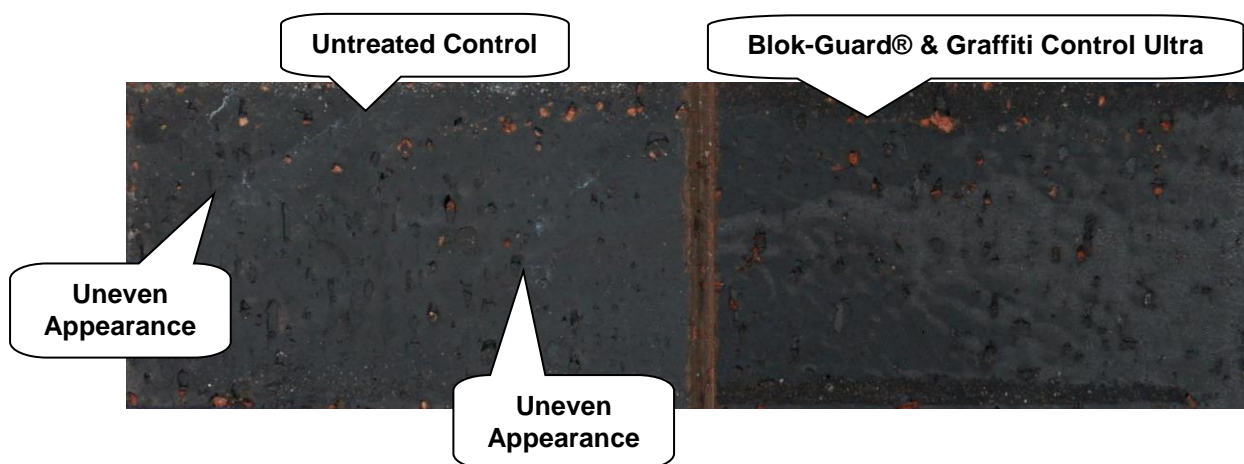
Sure Klean® Weather Seal Blok-Guard® & Graffiti Control II and Sure Klean® Weather Seal Blok-Guard® & Graffiti Control Ultra provided zero to slight enhancement to the majority of the samples.

Sure Klean® Weather Seal Blok-Guard® & Graffiti Control Ultra provided a moderate color enhancement to the “Tapestry Manganese”, “Tapestry Red Flashed”, “Highland Kirkhill”, and “Antique Colonial” brick samples.

Due to the density of the “Smooth Manganese”, “Smooth Red”, and “Tapestry Red” brick samples, less treatment was required using Sure Klean® Weather Seal Blok-Guard® & Graffiti Control Ultra when compared to the other samples.

Lastly, the “Port Morien” untreated sample exhibited an uneven appearance. Therefore, Sure Klean® Weather Seal Blok-Guard® & Graffiti Control Ultra enhanced this irregular appearance even with a light application.

**“Port Morien” Brick After Light Application**



## RECOMMENDATIONS: Water Repellency

Recommendations for water repellency for each brick submitted by Shaw Brick, Lantz, Nova Scotia are provided in the chart below. Recommendations are based on the treatment(s) that proved most effective.

Sample	Water Repellency
"Tapestry Red" Brick	Sure Klean® Weather Seal Siloxane PD OR Sure Klean® Weather Seal Blok-Guard® & Graffiti Control II OR Sure Klean® Weather Seal Blok-Guard® & Graffiti Control Ultra
"Tapestry Buff" Brick	
"Tapestry Brown" Brick	
"Tapestry Manganese" Brick	
"Tapestry Red Flashed" Brick	
"Tweedtex Red" Brick	N/A*
"Tweedtex Buff" Brick	
"Tweedtex Brown" Brick	
"Smooth Red" Brick	Sure Klean® Weather Seal Siloxane PD OR Sure Klean® Weather Seal Blok-Guard® & Graffiti Control II OR Sure Klean® Weather Seal Blok-Guard® & Graffiti Control Ultra
"Smooth Buff" Brick	
"Smooth Manganese" Brick	
"Port Morien" Brick	Sure Klean® Weather Seal Siloxane PD OR Sure Klean® Weather Seal Blok-Guard® & Graffiti Control II
"Atlantic White Point" Brick	Sure Klean® Weather Seal Siloxane PD OR Sure Klean® Weather Seal Blok-Guard® & Graffiti Control II OR Sure Klean® Weather Seal Blok-Guard® & Graffiti Control Ultra
"Highland Kirkhill" Brick	
"Antique Colonial" Brick	

**\*NOTE: Due to the irregular surface texture present, water absorption tube testing was unable to be performed.**

Apply all products in accordance with the manufacturer's recommendation provided on container labels and product data sheets. On-site testing should be conducted to determine the most treatment and procedures for a particular project. See product literature for additional application and product information.



## TEST METHODS: Graffiti Resistance

This evaluation compares the effectiveness of graffiti control treatments in preventing staining of enamel spray paint and permanent markers.

Spray paint and markers were applied as graffiti agents to the untreated and treated surfaces five days after application of Sure Klean® Weather Seal Blok-Guard® & Graffiti Control II and Sure Klean® Weather Seal Blok-Guard® & Graffiti Control Ultra. Removal of the graffiti agents was attempted 24 hours after application of the graffiti agents, using Enviro Klean® SafStrip® and Defacer Eraser® Graffiti Remover.

Chemical cleaners were evaluated using the following procedure:

1. Apply the product to a dry surface, soiled with graffiti.
2. Allow appropriate dwell time:
  - SafStrip® 8..... 30 minutes
  - Graffiti Remover ..... 5 minutes
3. Rinse thoroughly until water runs clear. \*
4. Allow the surface to dry thoroughly and visually examine to determine effectiveness.

**\*Pressure Rinsing Equipment** – Masonry washing equipment generating approximately 700-800 psi with a water flow rate of 8 gallons per minute delivered through a 45-degree fan spray tip was used for rinsing.

## TEST RESULTS AND PHOTOGRAPHS: Graffiti Resistance

“Tapestry Red” Brick					
Untreated Control	Red Paint	Black Marker	Red Marker	Blue Marker	% Avg. Removal
SafStrip®	90%	90%	90%	90%	<b>90%</b>
Graffiti Remover	85%	90%	90%	90%	<b>89%</b>
Blok-Guard® & Graffiti Control II	Red Paint	Black Marker	Red Marker	Blue Marker	% Avg. Removal
SafStrip®	90%	95%	95%	95%	<b>94%</b>
Graffiti Remover	95%	95%	95%	95%	<b>95%</b>
Blok-Guard® & Graffiti Control Ultra	Red Paint	Black Marker	Red Marker	Blue Marker	% Avg. Removal
SafStrip®	85%	98%	98%	98%	<b>95%</b>
Graffiti Remover	98%	98%	98%	98%	<b>98%</b>

**TEST RESULTS AND PHOTOGRAPHS: Graffiti Resistance (cont.)**

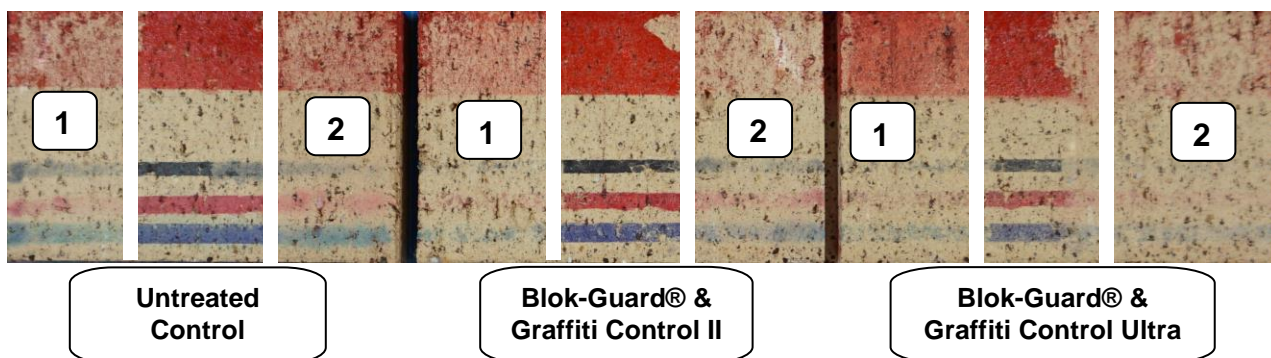
<b>"Tapestry Buff" Brick</b>					
<b>Untreated Control</b>	<b>Red Paint</b>	<b>Black Marker</b>	<b>Red Marker</b>	<b>Blue Marker</b>	<b>% Avg. Removal</b>
SafStrip®	50%	50%	70%	50%	<b>55%</b>
Graffiti Remover	50%	70%	50%	50%	<b>55%</b>
<b>Blok-Guard® &amp; Graffiti Control II</b>	<b>Red Paint</b>	<b>Black Marker</b>	<b>Red Marker</b>	<b>Blue Marker</b>	<b>% Avg. Removal</b>
SafStrip®	50%	80%	80%	80%	<b>73%</b>
Graffiti Remover	75%	70%	70%	70%	<b>71%</b>
<b>Blok-Guard® &amp; Graffiti Control Ultra</b>	<b>Red Paint</b>	<b>Black Marker</b>	<b>Red Marker</b>	<b>Blue Marker</b>	<b>% Avg. Removal</b>
SafStrip®	30%	80%	80%	80%	<b>68%</b>
Graffiti Remover	85%	90%	90%	85%	<b>88%</b>

**TEST RESULTS AND PHOTOGRAPHS: Graffiti Resistance (cont.)**

**“Tapestry Buff” Brick With Graffiti**



**“Tapestry Buff” Brick After Graffiti Testing**



**KEY**

**1 = SafStrip®**

**2 = Graffiti Remover**

**TEST RESULTS AND PHOTOGRAPHS: Graffiti Resistance (cont.)**

<b>"Tapestry Brown" Brick</b>					
<b>Untreated Control</b>	<b>Red Paint</b>	<b>Black Marker</b>	<b>Red Marker</b>	<b>Blue Marker</b>	<b>% Avg. Removal</b>
SafStrip®	70%	100%	100%	100%	<b>93%</b>
Graffiti Remover	75%	100%	100%	98%	<b>93%</b>
<b>Blok-Guard® &amp; Graffiti Control II</b>	<b>Red Paint</b>	<b>Black Marker</b>	<b>Red Marker</b>	<b>Blue Marker</b>	<b>% Avg. Removal</b>
SafStrip®	80%	100%	100%	100%	<b>95%</b>
Graffiti Remover	85%	100%	100%	100%	<b>96%</b>
<b>Blok-Guard® &amp; Graffiti Control Ultra</b>	<b>Red Paint</b>	<b>Black Marker</b>	<b>Red Marker</b>	<b>Blue Marker</b>	<b>% Avg. Removal</b>
SafStrip®	90%	100%	98%	100%	<b>97%</b>
Graffiti Remover	95%	98%	100%	100%	<b>98%</b>

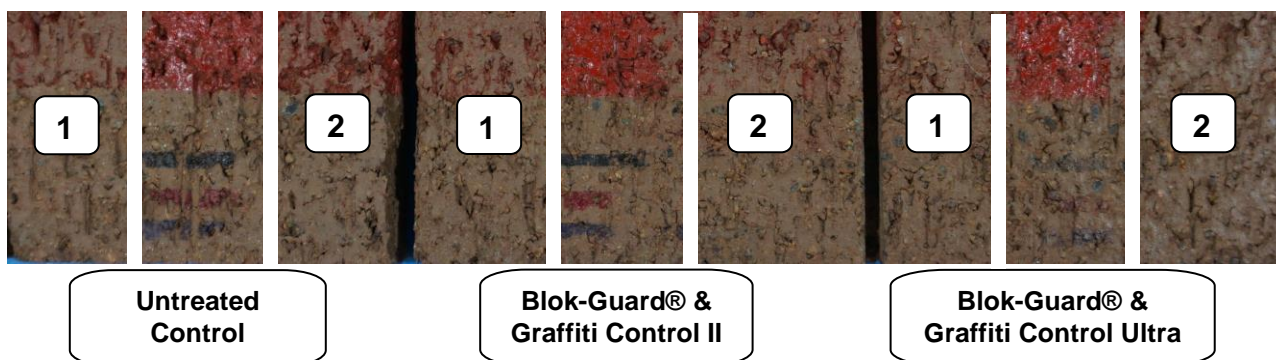


TEST RESULTS AND PHOTOGRAPHS: Graffiti Resistance (cont.)

“Tapestry Brown” Brick With Graffiti



“Tapestry Brown” Brick After Graffiti Testing



**KEY**

1 = SafStrip®

2 = Graffiti Remover

**TEST RESULTS AND PHOTOGRAPHS: Graffiti Resistance (cont.)**

<b>“Tapestry Manganese” Brick</b>					
<b>Untreated Control</b>	<b>Red Paint</b>	<b>Black Marker</b>	<b>Red Marker</b>	<b>Blue Marker</b>	<b>% Avg. Removal</b>
SafStrip®	60%	100%	98%	98%	<b>89%</b>
Graffiti Remover	60%	98%	100%	98%	<b>89%</b>
<b>Blok-Guard® &amp; Graffiti Control II</b>	<b>Red Paint</b>	<b>Black Marker</b>	<b>Red Marker</b>	<b>Blue Marker</b>	<b>% Avg. Removal</b>
SafStrip®	80%	100%	100%	100%	<b>95%</b>
Graffiti Remover	90%	100%	100%	100%	<b>98%</b>
<b>Blok-Guard® &amp; Graffiti Control Ultra</b>	<b>Red Paint</b>	<b>Black Marker</b>	<b>Red Marker</b>	<b>Blue Marker</b>	<b>% Avg. Removal</b>
SafStrip®	90%	100%	100%	100%	<b>98%</b>
Graffiti Remover	100%	100%	100%	100%	<b>100%</b>

<b>“Tapestry Red Flashed” Brick</b>					
<b>Untreated Control</b>	<b>Red Paint</b>	<b>Black Marker</b>	<b>Red Marker</b>	<b>Blue Marker</b>	<b>% Avg. Removal</b>
SafStrip®	85%	100%	100%	100%	<b>96%</b>
Graffiti Remover	90%	98%	100%	98%	<b>89%</b>
<b>Blok-Guard® &amp; Graffiti Control II</b>	<b>Red Paint</b>	<b>Black Marker</b>	<b>Red Marker</b>	<b>Blue Marker</b>	<b>% Avg. Removal</b>
SafStrip®	90%	100%	100%	100%	<b>98%</b>
Graffiti Remover	98%	100%	100%	100%	<b>100%</b>
<b>Blok-Guard® &amp; Graffiti Control Ultra</b>	<b>Red Paint</b>	<b>Black Marker</b>	<b>Red Marker</b>	<b>Blue Marker</b>	<b>% Avg. Removal</b>
SafStrip®	85%	100%	100%	100%	<b>96%</b>
Graffiti Remover	100%	100%	100%	100%	<b>100%</b>

**TEST RESULTS AND PHOTOGRAPHS: Graffiti Resistance (cont.)**

<b>"Tweedtex Red" Brick</b>					
<b>Untreated Control</b>	<b>Red Paint</b>	<b>Black Marker</b>	<b>Red Marker</b>	<b>Blue Marker</b>	<b>% Avg. Removal</b>
SafStrip®	60%	100%	100%	100%	<b>90%</b>
Graffiti Remover	60%	98%	98%	95%	<b>88%</b>
<b>Blok-Guard® &amp; Graffiti Control II</b>	<b>Red Paint</b>	<b>Black Marker</b>	<b>Red Marker</b>	<b>Blue Marker</b>	<b>% Avg. Removal</b>
SafStrip®	75%	100%	100%	95%	<b>93%</b>
Graffiti Remover	95%	100%	100%	100%	<b>99%</b>
<b>Blok-Guard® &amp; Graffiti Control Ultra</b>	<b>Red Paint</b>	<b>Black Marker</b>	<b>Red Marker</b>	<b>Blue Marker</b>	<b>% Avg. Removal</b>
SafStrip®	85%	100%	100%	100%	<b>96%</b>
Graffiti Remover	100%	100%	100%	100%	<b>100%</b>

<b>"Tweedtex Buff" Brick</b>					
<b>Untreated Control</b>	<b>Red Paint</b>	<b>Black Marker</b>	<b>Red Marker</b>	<b>Blue Marker</b>	<b>% Avg. Removal</b>
SafStrip®	50%	30%	30%	30%	<b>35%</b>
Graffiti Remover	40%	10%	10%	10%	<b>18%</b>
<b>Blok-Guard® &amp; Graffiti Control II</b>	<b>Red Paint</b>	<b>Black Marker</b>	<b>Red Marker</b>	<b>Blue Marker</b>	<b>% Avg. Removal</b>
SafStrip®	65%	75%	75%	75%	<b>73%</b>
Graffiti Remover	85%	75%	75%	75%	<b>78%</b>
<b>Blok-Guard® &amp; Graffiti Control Ultra</b>	<b>Red Paint</b>	<b>Black Marker</b>	<b>Red Marker</b>	<b>Blue Marker</b>	<b>% Avg. Removal</b>
SafStrip®	65%	90%	90%	80%	<b>81%</b>
Graffiti Remover	80%	90%	90%	90%	<b>88%</b>

**TEST RESULTS AND PHOTOGRAPHS: Graffiti Resistance (cont.)**

<b>"Tweedtex Brown" Brick</b>					
<b>Untreated Control</b>	<b>Red Paint</b>	<b>Black Marker</b>	<b>Red Marker</b>	<b>Blue Marker</b>	<b>% Avg. Removal</b>
SafStrip®	75%	100%	100%	100%	<b>94%</b>
Graffiti Remover	80%	100%	100%	95%	<b>94%</b>
<b>Blok-Guard® &amp; Graffiti Control II</b>	<b>Red Paint</b>	<b>Black Marker</b>	<b>Red Marker</b>	<b>Blue Marker</b>	<b>% Avg. Removal</b>
SafStrip®	90%	100%	100%	100%	<b>98%</b>
Graffiti Remover	90%	100%	100%	100%	<b>98%</b>
<b>Blok-Guard® &amp; Graffiti Control Ultra</b>	<b>Red Paint</b>	<b>Black Marker</b>	<b>Red Marker</b>	<b>Blue Marker</b>	<b>% Avg. Removal</b>
SafStrip®	80%	100%	100%	100%	<b>95%</b>
Graffiti Remover	95%	100%	100%	100%	<b>99%</b>

<b>"Smooth Red" Brick</b>					
<b>Untreated Control</b>	<b>Red Paint</b>	<b>Black Marker</b>	<b>Red Marker</b>	<b>Blue Marker</b>	<b>% Avg. Removal</b>
SafStrip®	98%	100%	100%	98%	<b>99%</b>
Graffiti Remover	98%	95%	100%	98%	<b>98%</b>
<b>Blok-Guard® &amp; Graffiti Control II</b>	<b>Red Paint</b>	<b>Black Marker</b>	<b>Red Marker</b>	<b>Blue Marker</b>	<b>% Avg. Removal</b>
SafStrip®	98%	100%	100%	100%	<b>100%</b>
Graffiti Remover	100%	100%	100%	100%	<b>100%</b>
<b>Blok-Guard® &amp; Graffiti Control Ultra</b>	<b>Red Paint</b>	<b>Black Marker</b>	<b>Red Marker</b>	<b>Blue Marker</b>	<b>% Avg. Removal</b>
SafStrip®	98%	100%	100%	100%	<b>100%</b>
Graffiti Remover	100%	100%	100%	100%	<b>100%</b>



**TEST RESULTS AND PHOTOGRAPHS: Graffiti Resistance (cont.)**

<b>“Smooth Buff” Brick</b>					
<b>Untreated Control</b>	<b>Red Paint</b>	<b>Black Marker</b>	<b>Red Marker</b>	<b>Blue Marker</b>	<b>% Avg. Removal</b>
SafStrip®	80%	75%	75%	75%	<b>76%</b>
Graffiti Remover	90%	60%	60%	60%	<b>68%</b>
<b>Blok-Guard® &amp; Graffiti Control II</b>	<b>Red Paint</b>	<b>Black Marker</b>	<b>Red Marker</b>	<b>Blue Marker</b>	<b>% Avg. Removal</b>
SafStrip®	75%	100%	98%	80%	<b>88%</b>
Graffiti Remover	95%	80%	80%	80%	<b>84%</b>
<b>Blok-Guard® &amp; Graffiti Control Ultra</b>	<b>Red Paint</b>	<b>Black Marker</b>	<b>Red Marker</b>	<b>Blue Marker</b>	<b>% Avg. Removal</b>
SafStrip®	75%	100%	98%	98%	<b>93%</b>
Graffiti Remover	90%	98%	98%	98%	<b>96%</b>

<b>“Smooth Manganese” Brick</b>					
<b>Untreated Control</b>	<b>Red Paint</b>	<b>Black Marker</b>	<b>Red Marker</b>	<b>Blue Marker</b>	<b>% Avg. Removal</b>
SafStrip®	95%	100%	100%	100%	<b>99%</b>
Graffiti Remover	75%	100%	100%	100%	<b>94%</b>
<b>Blok-Guard® &amp; Graffiti Control II</b>	<b>Red Paint</b>	<b>Black Marker</b>	<b>Red Marker</b>	<b>Blue Marker</b>	<b>% Avg. Removal</b>
SafStrip®	95%	100%	100%	100%	<b>99%</b>
Graffiti Remover	95%	100%	100%	100%	<b>99%</b>
<b>Blok-Guard® &amp; Graffiti Control Ultra</b>	<b>Red Paint</b>	<b>Black Marker</b>	<b>Red Marker</b>	<b>Blue Marker</b>	<b>% Avg. Removal</b>
SafStrip®	95%	100%	100%	100%	<b>99%</b>
Graffiti Remover	100%	100%	100%	100%	<b>100%</b>

**TEST RESULTS AND PHOTOGRAPHS: Graffiti Resistance (cont.)**

**“Smooth Manganese” Brick With Graffiti**

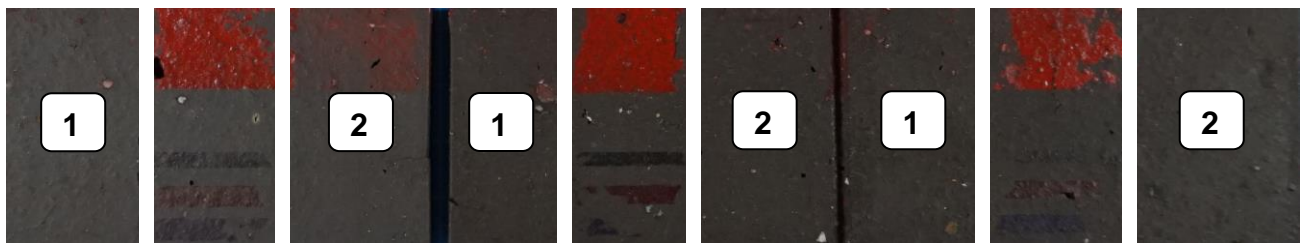


**Untreated  
Control**

**Blok-Guard® &  
Graffiti Control II**

**Blok-Guard® &  
Graffiti Control Ultra**

**“Smooth Manganese” Brick After Graffiti Testing**



**Untreated  
Control**

**Blok-Guard® &  
Graffiti Control II**

**Blok-Guard® &  
Graffiti Control Ultra**

**KEY**

**1 = SafStrip®**

**2 = Graffiti Remover**

**TEST RESULTS AND PHOTOGRAPHS: Graffiti Resistance (cont.)**

<b>“Port Morien” Brick</b>					
<b>Untreated Control</b>	<b>Red Paint</b>	<b>Black Marker</b>	<b>Red Marker</b>	<b>Blue Marker</b>	<b>% Avg. Removal</b>
SafStrip®	75%	100%	100%	100%	<b>94%</b>
Graffiti Remover	75%	100%	98%	100%	<b>93%</b>
<b>Blok-Guard® &amp; Graffiti Control II</b>	<b>Red Paint</b>	<b>Black Marker</b>	<b>Red Marker</b>	<b>Blue Marker</b>	<b>% Avg. Removal</b>
SafStrip®	85%	100%	100%	100%	<b>96%</b>
Graffiti Remover	85%	100%	100%	100%	<b>96%</b>
<b>Blok-Guard® &amp; Graffiti Control Ultra</b>	<b>Red Paint</b>	<b>Black Marker</b>	<b>Red Marker</b>	<b>Blue Marker</b>	<b>% Avg. Removal</b>
SafStrip®	75%	100%	100%	100%	<b>94%</b>
Graffiti Remover	95%	100%	100%	100%	<b>99%</b>

<b>“Atlantic White Point” Brick</b>					
<b>Untreated Control</b>	<b>Red Paint</b>	<b>Black Marker</b>	<b>Red Marker</b>	<b>Blue Marker</b>	<b>% Avg. Removal</b>
SafStrip®	50%	50%	50%	50%	<b>50%</b>
Graffiti Remover	20%	50%	50%	50%	<b>43%</b>
<b>Blok-Guard® &amp; Graffiti Control II</b>	<b>Red Paint</b>	<b>Black Marker</b>	<b>Red Marker</b>	<b>Blue Marker</b>	<b>% Avg. Removal</b>
SafStrip®	80%	75%	75%	75%	<b>76%</b>
Graffiti Remover	80%	85%	75%	75%	<b>79%</b>
<b>Blok-Guard® &amp; Graffiti Control Ultra</b>	<b>Red Paint</b>	<b>Black Marker</b>	<b>Red Marker</b>	<b>Blue Marker</b>	<b>% Avg. Removal</b>
SafStrip®	50%	60%	60%	60%	<b>58%</b>
Graffiti Remover	75%	90%	90%	85%	<b>85%</b>

**TEST RESULTS AND PHOTOGRAPHS: Graffiti Resistance (cont.)**

<b>“Highland Kirkhill” Brick</b>					
<b>Untreated Control</b>	<b>Red Paint</b>	<b>Black Marker</b>	<b>Red Marker</b>	<b>Blue Marker</b>	<b>% Avg. Removal</b>
SafStrip®	60%	100%	100%	90%	<b>88%</b>
Graffiti Remover	60%	100%	95%	90%	<b>86%</b>
<b>Blok-Guard® &amp; Graffiti Control II</b>	<b>Red Paint</b>	<b>Black Marker</b>	<b>Red Marker</b>	<b>Blue Marker</b>	<b>% Avg. Removal</b>
SafStrip®	80%	95%	95%	90%	<b>90%</b>
Graffiti Remover	80%	98%	100%	98%	<b>94%</b>
<b>Blok-Guard® &amp; Graffiti Control Ultra</b>	<b>Red Paint</b>	<b>Black Marker</b>	<b>Red Marker</b>	<b>Blue Marker</b>	<b>% Avg. Removal</b>
SafStrip®	80%	100%	100%	100%	<b>95%</b>
Graffiti Remover	90%	98%	98%	98%	<b>96%</b>

<b>“Antique Colonial” Brick</b>					
<b>Untreated Control</b>	<b>Red Paint</b>	<b>Black Marker</b>	<b>Red Marker</b>	<b>Blue Marker</b>	<b>% Avg. Removal</b>
SafStrip®	80%	100%	100%	95%	<b>94%</b>
Graffiti Remover	98%	100%	100%	100%	<b>100%</b>
<b>Blok-Guard® &amp; Graffiti Control II</b>	<b>Red Paint</b>	<b>Black Marker</b>	<b>Red Marker</b>	<b>Blue Marker</b>	<b>% Avg. Removal</b>
SafStrip®	98%	98%	100%	100%	<b>99%</b>
Graffiti Remover	98%	100%	100%	100%	<b>100%</b>
<b>Blok-Guard® &amp; Graffiti Control Ultra</b>	<b>Red Paint</b>	<b>Black Marker</b>	<b>Red Marker</b>	<b>Blue Marker</b>	<b>% Avg. Removal</b>
SafStrip®	98%	100%	100%	100%	<b>100%</b>
Graffiti Remover	100%	100%	100%	100%	<b>100%</b>



## **CONCLUSIONS: Graffiti Resistance**

Based upon laboratory evaluations, graffiti removal was improved when the submitted samples were treated with Sure Klean® Weather Seal Blok-Guard® & Graffiti Control II and Sure Klean® Weather Seal Blok-Guard® & Graffiti Control Ultra, although Sure Klean® Weather Seal Blok-Guard® & Graffiti Control Ultra was the most effective treatment on the samples.

## RECOMMENDATIONS: Graffiti Control

Recommendations for graffiti control for each brick submitted by Shaw Brick, Lantz, Nova Scotia are provided in the chart below. Recommendations are based on the treatment(s) that proved most effective on average for providing graffiti repellency and the product that was most effective on average at removing the graffiti on all types submitted.

Sample	Graffiti Repellents	Graffiti Removers
"Tapestry Red" Brick	<sup>2</sup> Sure Klean® Weather Seal Blok-Guard® & Graffiti Control II OR <sup>1</sup> Sure Klean® Weather Seal Blok-Guard® & Graffiti Control Ultra	<sup>2</sup> Enviro Klean® SafStrip® OR <sup>1</sup> Defacer Eraser® Graffiti Remover
"Tapestry Buff" Brick		
"Tapestry Brown" Brick		
"Tapestry Manganese" Brick		
"Tapestry Red Flashed" Brick		
"Tweedtex Red" Brick		
"Tweedtex Buff" Brick		
"Tweedtex Brown" Brick		
"Smooth Red" Brick		
"Smooth Buff" Brick		
"Smooth Manganese" Brick		
"Port Morien" Brick		
"Atlantic White Point" Brick		
"Highland Kirkhill" Brick		
"Antique Colonial" Brick		

NOTE: "1" indicates the most effective product and "2" indicates the second most effective product.

Apply all products in accordance with the manufacturer's recommendation provided on container labels and product data sheets. Because the severity of graffiti varies from location to location, on-site testing should be conducted to determine the most appropriate graffiti control product and procedure for a particular project.



J. Lucas Comadoll  
Project Testing Technician

**ALL SAMPLES SUPPLIED FOR THE ABOVE EVALUATION WILL BE DISPOSED OF THIRTY (30) DAYS AFTER THE ISSUE DATE OF THIS REPORT. IF SAMPLES ARE TO BE RETAINED FOR ADDITIONAL TESTING OR RETURNED TO THE SENDER, PROVIDE WRITTEN INSTRUCTIONS TO THE LABORATORY WITHIN THIRTY (30) DAYS OF THE ISSUE DATE OF THIS REPORT.**

Recommendations made within this report are based on laboratory test applications and observations. Final determination of the suitability of a product and/or procedure should be made only after thorough job testing on actual surfaces.