

Table of Contents

Executive Summary	i
Submitted Information	1
Introduction	2
Purpose of Testing.....	2
Products Evaluated.....	3
Products Evaluated	4
Description of Products Evaluated – New Construction Cleaning	5
Sample Preparation – New Construction Cleaning	5
Test Method – New Construction Cleaning	5
Test Results – New Construction Cleaning	6
Test Results – New Construction Cleaning	7
Test Results – Limiting Surface Alterations	8
Test Results – Limiting Surface Alterations	9
Test Results – Limiting Surface Alterations	10
Conclusions – New Construction Cleaning.....	16
Recommendations – New Construction Cleaning	16
Protective Water Repellents.....	17
Description of Products Evaluated – Protective Water Repellents	17
Description of Products Evaluated – Protective Water Repellents	18
Sample Preparation – Protective Water Repellents.....	18
Test Methods – Protective Water Repellents.....	20
Test Results – Protective Water Repellents	21
Test Results – Protective Water Repellents	22
Test Results – Protective Water Repellents	23
Test Results – Protective Water Repellents	24
Test Results – Protective Water Repellents	26
Test Results – Protective Water Repellents	27
Test Results – Protective Water Repellents	28
Test Results – Protective Water Repellents	29
Test Results – Protective Water Repellents	30
Test Results – Protective Water Repellents	31
Test Results – Protective Water Repellents	32
Test Results – Protective Water Repellents	33
Test Results – Protective Water Repellents	34
Test Results – Protective Water Repellents	35
Test Results – Protective Water Repellents	36
Test Results – Protective Water Repellents	37
Test Results – Protective Water Repellents	38
Test Results – Protective Water Repellents	39
Test Results – Protective Water Repellents	40
Test Results – Protective Water Repellents	41
Test Results – Protective Water Repellents	42
Test Results – Protective Water Repellents	43
Test Results – Protective Water Repellents	44
Test Results – Protective Water Repellents	45
Test Results – Protective Water Repellents	46
Photographs – Protective Water Repellents.....	47
Recommendations – Protective Water Repellents	48
Recommendations – Protective Water Repellents	49
Recommendations – Protective Water Repellents	50
Recommendations – Protective Water Repellents	51
Recommendations – Protective Water Repellents	52

Recommendations – Protective Water Repellents	53
Recommendations – Protective Water Repellents	54
Recommendations – Protective Water Repellents	55
Recommendations – Protective Water Repellents	56
Color and Sheen Enhancement.....	57
Description of Product Evaluated – Color and Sheen Enhancement	57
Test Method – Color and Sheen Enhancement.....	57
Test Results – Color and Sheen Enhancement Products Evaluated	58
Test Results – Color and Sheen Enhancement Products Evaluated	59
Test Results – Color and Sheen Enhancement Products Evaluated	61
Test Results – Color and Sheen Enhancement Products Evaluated	62
Test Results – Color and Sheen Enhancement Products Evaluated	63
Test Results – Color and Sheen Enhancement Products Evaluated	64
Photographs – Color and Sheen Enhancement	65
Photographs – Color and Sheen Enhancement	66
Photographs – Color and Sheen Enhancement	67
Photographs – Color and Sheen Enhancement	68
Photographs – Color and Sheen Enhancement	69
Recommendations – Color and Sheen Enhancement.....	70
Recommendations – Color and Sheen Enhancement.....	71
Recommendations – Color and Sheen Enhancement.....	72
Graffiti Control.....	73
Description of Products Evaluated – Graffiti Control.....	73
Sample Preparation – Graffiti Control	74
Test Method – Graffiti Control	74
Test Results – Graffiti Control	75
Photographs – Graffiti Control.....	82
Photographs – Graffiti Control.....	83
Photographs – Graffiti Control.....	84
Photographs – Graffiti Control.....	85
Photographs – Graffiti Control.....	86
Conclusions – Graffiti Control	87
Recommendations – Graffiti Control	87
Recommendations – Graffiti Control	88
Recommendations – Graffiti Control	89
Attachments	
Technical Services TECH Note RILEM Tube Test Procedures	
Product Data literature for all products evaluated	

Submitted Information

For: Jeff Lucas
Cc: Gary Hayes
 Brian Koenings

Subject: Natural Stone Veneers International Inc.
 Fond du Lac, WI 54936

Date: February 28, 2009

Samples Submitted: 20 types of natural stone in various sizes, shapes, and colors

Sample	Type	Color Tones	Size
"Cobblestone"	Granite	Various	Various
"Belmont"	Limestone	Grey	Various
"Bradford"	Limestone	Light Brown/Buff	Various
"Carleton"	Limestone	Grey/Lavender/Buff	Various
"Chandler"	Limestone	Grey	Various
"Chardonnay"	Limestone	Buff/Red	Various
"Fairmont"	Limestone	Grey/Buff	Various
"Keywest"	Limestone	Grey/Blue	Various
"New Castle"	Limestone	Brown/Buff	Various
"Olympia"	Limestone	White/Cream	Various
"Stockholm"	Limestone	Grey/Black	Various
"Sutton"	Limestone	Grey/Buff	Various
"Kingston"	Travertine	Gold	8" x 8" x 3/8"
"Windsor"	Travertine	Buff/Light Brown	8" x 8" x 3/8"
"Hudson Ledge stone"	Quartzite	Silver/Brown	Various
"Virginia Ledge stone"	Quartzite	Silver/Brown	Various
"Canyon Creek"	Sandstone	Brown/Red	Various
"New England Fieldstone"	Sandstone	Brown/Buff/Red	Various
"Palmer"	Sandstone	Buff/Salmon	Various
"Santa Barbara"	Sandstone	Tan/Salmon/Brown	Various

Submitted by: Jeff Lucas

Introduction

Architectural Materials Testing (AMT) Laboratories is a Boyer Industries company that provides laboratory testing and consulting services for the construction industry. Laboratory testing includes evaluating chemical cleaning products and protective treatments for a variety of new and existing architectural materials.

This report includes descriptions of the PROSOCO, Inc. products and test methods that were used. Following test results and conclusions, the report provides recommendations for the most effective products and procedures.

Purpose of Testing

Twenty types of natural stone samples were submitted to AMT Laboratories by PROSOCO, Inc. with a request to determine if application of the products evaluated will produce any surface alterations during new construction cleaning operations. Additionally, the effectiveness of water repellents, color and sheen enhancement, and graffiti repellent products suitable for natural stone were evaluated.

New Construction Cleaning – Sure Klean® Vana Trol® and Enviro Klean® Safety Klean were tested at various dilutions to determine the optimum cleaner/cure time combination for complete removal of laboratory applied Type S mortar from the submitted natural stone while limiting surface alterations. The surface alteration evaluation was visually determined based upon perceived discoloration or erosion/etching of the samples.

To simulate new construction soiling, the samples were placed on a bench with finished surface facing upward. Hollow cylinders measuring 50 mm in diameter and 75 mm tall were positioned on top of the samples and filled with a wet mixture of Type S cementitious mortar. The wet mortar-filled cylinder was allowed to remain in contact with the samples for 10 minutes before removal.

Heavy deposits of mortar were removed with dry scraping after 24 hours. Prepared cleaning solutions were then evaluated for their effectiveness in removing residual Type S mortar after 3, 7, and 14 days of curing. A visual examination was also made to determine if the tested cleaners caused any surface alterations to the submitted samples based on the following:

Surface Finish Removal is the visual examination of the sample comparing the surface finish of the untreated control surface to the surface finish cleaned with selected product(s) at given dilutions.

Substrate Deterioration is the visual examination of the sample comparing the surface of the untreated control to surfaces cleaned with selected product(s) at given dilutions looking for any potential erosion/digestion of the sample.

Color Change is the visual examination comparing the color of the untreated control surface to color of surfaces cleaned with selected products at given dilutions.

Staining is the visual examination for changes that are the result of a chemical reaction that leaves a staining precipitate.

Protective Water Repellents – Consolideck® Saltguard®, Consolideck® Saltguard® WB, Paver Kare® Deep Sheen, Paver Kare® Deep Sheen WB, Paver Kare® Paver Enhancer, Paver Kare® Paver Enhancer WB, Stand Off® Color Enhancer, Stand Off® Color Enhancer WB, Stand Off® Limestone & Marble Protector, Stand Off® SLX100 Water & Oil Repellent, Stand Off® Stone, Tile & Masonry Protector (STMP), Sure Klean® Weather Seal Natural Stone Treatment, Sure Klean® Weather Seal Natural Stone Treatment WB, Sure Klean® Weather Seal Siloxane PD, Sure Klean® Weather Seal Siloxane WB Concentrate, and Sure Klean® Weather Seal were evaluated for their ability to provide water repellency to the submitted natural stone.

Color and Sheen Enhancement – Paver Kare® Deep Sheen, Paver Kare® Deep Sheen WB, Paver Kare® Paver Enhancer, Paver Kare® Paver Enhancer WB, Stand Off® Color Enhancer, and Stand Off® Color Enhancer WB were evaluated on the submitted natural stone for their ability to provide color and/or sheen enhancement.

Graffiti Repellency – Sure Klean® Weather Seal Blok-Guard® & Graffiti Control and Sure Klean® Weather Seal Blok-Guard® & Graffiti Control II were evaluated for graffiti resistance on the submitted natural stone. Enviro Klean® SafStrip®, Enviro Klean® SafStrip® 8, Sure Klean® Fast Acting Stripper, and Defacer Eraser® Graffiti Wipe were evaluated for their ability to remove graffiti from the submitted natural stone.

Products Evaluated**New Construction Cleaning Products Evaluated**

Sample	Product	Dilution
All Submitted Natural Stone Samples	Sure Klean® Vana Trol®	1:6
		1:8
All Granite, Quartzite, & Sandstone Samples	Enviro Klean® Safety Klean	1:2
		1:3

Protective Water Repellency Products Evaluated

Sample	Product	Dilution
All Submitted Natural Stone Samples	Stand Off® SLX100 Water & Oil Repellent	Concentrate
	Stand Off® Stone, Tile & Masonry Protector (STMP)	Concentrate
	Sure Klean® Weather Seal Natural Stone Treatment	Concentrate
	Sure Klean® Weather Seal Natural Stone Treatment WB	Concentrate
All Limestone, Travertine, Quartzite, & Sandstone Samples	Stand Off® Limestone & Marble Protector	Concentrate
All Granite Samples	Sure Klean® Weather Seal SL100 Water Repellent	Concentrate
All Quartzite & Sandstone Samples	Consolideck® Saltguard®	Concentrate
	Consolideck® Saltguard® WB	Concentrate
	Sure Klean® Weather Seal Siloxane PD	Concentrate
	Sure Klean® Weather Seal Siloxane WB Concentrate	Concentrate
	Sure Klean® Weather Seal SL100 Water Repellent	Concentrate

Color and Sheen Enhancement Products

Sample	Product	Dilution
All Submitted Natural Stone Samples	Paver Kare® Deep Sheen	Concentrate
	Paver Kare® Deep Sheen WB	Concentrate
	Stand Off® Color Enhancer	Concentrate
	Stand Off® Color Enhancer WB	Concentrate
All Limestone, Travertine, Quartzite, & Sandstone Samples	Paver Kare® Paver Enhancer	Concentrate
	Paver Kare® Paver Enhancer WB	Concentrate

Products Evaluated**Graffiti Repellency Products Evaluated**

Sample	Product	Dilution
All Submitted Natural Stone Samples	Sure Klean® Weather Seal Blok-Guard® & Graffiti Control	Concentrate
	Sure Klean® Weather Seal Blok-Guard® & Graffiti Control II	Concentrate

Graffiti Removal Products Evaluated

Sample	Product	Dilution
All Submitted Natural Stone Samples	Sure Klean® Fast Acting Stripper	Concentrate
	Defacer Eraser® Graffiti Wipe	Concentrate
All Granite, Travertine, Quartzite, & Sandstone Samples	Enviro Klean® SafStrip®	Concentrate
All Limestone Samples	Enviro Klean® SafStrip® 8	Concentrate

New Construction Cleaning

These cleaning trials were conducted to determine the optimal cleaning/cure time combination to most efficiently remove Type S mortar from the submitted samples while limiting surface alterations.

Type S cementitious mortar was prepared in compliance with the manufacturer's instructions, applied to the natural stone surface and allowed to cure for 3, 7, and 14 days. Mortar removal was accomplished using chemical assistance and a high-pressure water rinse with pressure rinsing equipment. The removal of Type S cementitious mortar was visually evaluated after 3, 7, and 14 days of curing.

Description of Products Evaluated – New Construction Cleaning

Sure Klean® Vana Trol® – A concentrated acidic cleaner for new masonry surfaces that are subject to vanadium, manganese and other metallic stains. Use on: gray, brown, white, and most light-colored brick; natural stone; cast stone. Dissolves mortar smears and construction dirt quickly, leaving the masonry clean and uniform with no acid burning or streaking. Liquid concentrate for dilution with 4-10 parts water. Apply by brush or low-pressure spray.

Enviro Klean® Safety Klean – A is an effective, safe alternative to acidic compounds for cleaning brick, tile and concrete surfaces. Safety Klean rids new masonry construction of excess mortar, dirt and other common job site soiling. It's ideal for projects where traditional acidic cleaners are not allowed. Non-fuming Safety Klean contains no hydrochloric or other traditional inorganic acids and is safe for use on and around most metal surfaces, indoors or out. It is up to 70 percent more effective than citric and glycolic acids, and 50 percent more effective than phosphoric acid.

Sample Preparation – New Construction Cleaning

Type S mortar was prepared in compliance with the manufacturer's instructions, applied to the samples' surfaces and allowed to cure for 3, 7, and 14 days. Mortar removal was accomplished using chemical assistance and a high-pressure water rinse with pressure rinsing equipment. The removal of Type S masonry mortar was visually evaluated after 3, 7, and 14 days of curing. A visual examination was also made to the natural stone to determine if the products tested caused any change to the surface of the stone.

Test Method – New Construction Cleaning

New construction cleaners were evaluated using the following procedure:

1. Pre-wet the surface with water.
2. Apply the cleaner.
3. Allow the appropriate dwell time, as specified:

Sure Klean® Vana Trol®	3-5 minutes
Enviro Klean® Safety Klean.....	3-5 minutes
4. Pressure rinse thoroughly.*

***Pressure Rinsing Equipment** – Masonry washing equipment generating approximately 700-800 psi with a water flow rate of 8 gallons per minute delivered through a 45 degree fan spray tip was used for rinsing.

Test Results – New Construction Cleaning**Cleaning Effectiveness (% Type S Mortar Removal)**

“Cobblestone”; Granite				
Product	Dilution	3 day	7 day	14 day
Sure Klean® Vana Trol®	1:6	100 %	100 %	100 %
	1:8	100 %	100 %	100 %
Enviro Klean® Safety Klean	1:2	100 %	100 %	100 %
	1:3	100 %	100 %	100 %
“Belmont”; Limestone				
Product	Dilution	3 day	7 day	14 day
Sure Klean® Vana Trol®	1:6	100 %	100 %	100 %
	1:8	100 %	100 %	100 %
“Bradford”; Limestone				
Product	Dilution	3 day	7 day	14 day
Sure Klean® Vana Trol®	1:6	100 %	100 %	100 %
	1:8	100 %	100 %	100 %
“Carleton”; Limestone				
Product	Dilution	3 day	7 day	14 day
Sure Klean® Vana Trol®	1:6	100 %	100 %	98 %
	1:8	100 %	100 %	98 %
“Chandler”; Limestone				
Product	Dilution	3 day	7 day	14 day
Sure Klean® Vana Trol®	1:6	100 %	100 %	100 %
	1:8	100 %	100 %	100 %
“Chardonnay”; Limestone				
Product	Dilution	3 day	7 day	14 day
Sure Klean® Vana Trol®	1:6	100 %	100 %	100 %
	1:8	100 %	100 %	100 %
“Fairmont”; Limestone				
Product	Dilution	3 day	7 day	14 day
Sure Klean® Vana Trol®	1:6	100 %	100 %	100 %
	1:8	100 %	100 %	100 %
“Keywest”; Limestone				
Product	Dilution	3 day	7 day	14 day
Sure Klean® Vana Trol®	1:6	100 %	100 %	100 %
	1:8	100 %	100 %	100 %
“New Castle”; Limestone				
Product	Dilution	3 day	7 day	14 day
Sure Klean® Vana Trol®	1:6	100 %	100 %	100 %
	1:8	100 %	100 %	100 %
“Olympia”; Limestone				
Product	Dilution	3 day	7 day	14 day
Sure Klean® Vana Trol®	1:6	98 %	98 %	100 %
	1:8	98 %	98 %	100 %
“Stockholm”; Limestone				
Product	Dilution	3 day	7 day	14 day
Sure Klean® Vana Trol®	1:6	100 %	100 %	100 %
	1:8	100 %	100 %	100 %

Test Results – New Construction Cleaning**Cleaning Effectiveness (% Type S Mortar Removal)**

“Sutton”; Limestone				
Product	Dilution	3 day	7 day	14 day
Sure Klean® Vana Trol®	1:6	100 %	100 %	100 %
	1:8	100 %	100 %	100 %
“Kingston”; Travertine				
Product	Dilution	3 day	7 day	14 day
Sure Klean® Vana Trol®	1:6	100 %	100 %	100 %
	1:8	100 %	100 %	100 %
“Windsor”; Travertine				
Product	Dilution	3 day	7 day	14 day
Sure Klean® Vana Trol®	1:6	100 %	100 %	100 %
	1:8	100 %	100 %	100 %
“Hudson LedgeStone”; Quartzite				
Product	Dilution	3 day	7 day	14 day
Sure Klean® Vana Trol®	1:6	100 %	100 %	100 %
	1:8	100 %	100 %	100 %
Enviro Klean® Safety Klean	1:2	100 %	100 %	100 %
	1:3	100 %	100 %	100 %
“Virginia LedgeStone”; Quartzite				
Product	Dilution	3 day	7 day	14 day
Sure Klean® Vana Trol®	1:6	100 %	100 %	100 %
	1:8	100 %	100 %	100 %
Enviro Klean® Safety Klean	1:2	100 %	100 %	100 %
	1:3	100 %	100 %	100 %
“Canyon Creek”; Sandstone				
Product	Dilution	3 day	7 day	14 day
Sure Klean® Vana Trol®	1:6	100 %	100 %	100 %
	1:8	100 %	100 %	100 %
Enviro Klean® Safety Klean	1:2	100 %	100 %	100 %
	1:3	100 %	100 %	100 %
“New England Fieldstone”; Sandstone				
Product	Dilution	3 day	7 day	14 day
Sure Klean® Vana Trol®	1:6	100 %	100 %	100 %
	1:8	100 %	100 %	100 %
Enviro Klean® Safety Klean	1:2	100 %	100 %	100 %
	1:3	100 %	100 %	100 %
“Palmer”; Sandstone				
Product	Dilution	3 day	7 day	14 day
Sure Klean® Vana Trol®	1:6	100 %	100 %	100 %
	1:8	100 %	100 %	100 %
Enviro Klean® Safety Klean	1:2	100 %	100 %	100 %
	1:3	100 %	100 %	100 %
“Santa Barbara”; Sandstone				
Product	Dilution	3 day	7 day	14 day
Sure Klean® Vana Trol®	1:6	100 %	100 %	100 %
	1:8	100 %	95 %	100 %
Enviro Klean® Safety Klean	1:2	100 %	100 %	100 %
	1:3	100 %	100 %	100 %

Test Results – Limiting Surface Alterations

“Cobblestone”; Granite					
Product	Dilution	Surface Finish Removal	Substrate Deterioration	Color Change	Staining
Sure Klean® Vana Trol®	1:6	0	0	0	0
	1:8	0	0	0	0
Enviro Klean® Safety Klean	1:2	0	0	0	0
	1:3	0	0	0	0
“Belmont”; Limestone					
Product	Dilution	Surface Finish Removal	Substrate Deterioration	Color Change	Staining
Sure Klean® Vana Trol®	1:6	0	0	0	0
	1:8	0	0	0	0
“Bradford”; Limestone					
Product	Dilution	Surface Finish Removal	Substrate Deterioration	Color Change	Staining
Sure Klean® Vana Trol®	1:6	0	0	0	0
	1:8	0	0	0	0
“Carleton”; Limestone					
Product	Dilution	Surface Finish Removal	Substrate Deterioration	Color Change	Staining
Sure Klean® Vana Trol®	1:6	0	0	0	0
	1:8	0	0	0	0
“Chandler”; Limestone					
Product	Dilution	Surface Finish Removal	Substrate Deterioration	Color Change	Staining
Sure Klean® Vana Trol®	1:6	0	0	0	0
	1:8	0	0	0	0
“Chardonnay”; Limestone					
Product	Dilution	Surface Finish Removal	Substrate Deterioration	Color Change	Staining
Sure Klean® Vana Trol®	1:6	0	0	0	0
	1:8	0	0	0	0
“Fairmont”; Limestone					
Product	Dilution	Surface Finish Removal	Substrate Deterioration	Color Change	Staining
Sure Klean® Vana Trol®	1:6	0	0	0	0
	1:8	0	0	0	0
“Keywest”; Limestone					
Product	Dilution	Surface Finish Removal	Substrate Deterioration	Color Change	Staining
Sure Klean® Vana Trol®	1:6	0	0	0	0
	1:8	0	0	0	0
“New Castle”; Limestone					
Product	Dilution	Surface Finish Removal	Substrate Deterioration	Color Change	Staining
Sure Klean® Vana Trol®	1:6	0	0	1	0
	1:8	0	0	1	0
“Olympia”; Limestone					
Product	Dilution	Surface Finish Removal	Substrate Deterioration	Color Change	Staining
Sure Klean® Vana Trol®	1:6	0	0	0	0
	1:8	0	0	0	0

0 – No Change

1 – Change – Slight

2 – Change – Moderate

3 – Change – Heavy

4 – Change – Excessive

Test Results – Limiting Surface Alterations

“Stockholm”; Limestone					
Product	Dilution	Surface Finish Removal	Substrate Deterioration	Color Change	Staining
Sure Klean® Vana Trol®	1:6	0	0	0	0
	1:8	0	0	0	0
“Sutton”; Limestone					
Product	Dilution	Surface Finish Removal	Substrate Deterioration	Color Change	Staining
Sure Klean® Vana Trol®	1:6	0	0	0	0
	1:8	0	0	0	0
“Kingston”; Travertine					
Product	Dilution	Surface Finish Removal	Substrate Deterioration	Color Change	Staining
Sure Klean® Vana Trol®	1:6	0	0	0	0
	1:8	0	0	0	0
“Windsor”; Travertine					
Product	Dilution	Surface Finish Removal	Substrate Deterioration	Color Change	Staining
Sure Klean® Vana Trol®	1:6	0	0	0	0
	1:8	0	0	0	0
“Hudson LedgeStone”; Quartzite					
Product	Dilution	Surface Finish Removal	Substrate Deterioration	Color Change	Staining
Sure Klean® Vana Trol®	1:6	0	0	0	0
	1:8	0	0	0	0
Enviro Klean® Safety Klean	1:2	0	0	0	0
	1:3	0	0	0	0
“Virginia LedgeStone”; Quartzite					
Product	Dilution	Surface Finish Removal	Substrate Deterioration	Color Change	Staining
Sure Klean® Vana Trol®	1:6	0	0	0	0
	1:8	0	0	0	0
Enviro Klean® Safety Klean	1:2	0	0	0	0
	1:3	0	0	0	0
“Canyon Creek”; Sandstone					
Product	Dilution	Surface Finish Removal	Substrate Deterioration	Color Change	Staining
Sure Klean® Vana Trol®	1:6	0	0	0	0
	1:8	0	0	0	0
Enviro Klean® Safety Klean	1:2	0	0	0	0
	1:3	0	0	0	0
“New England Fieldstone”; Limestone					
Product	Dilution	Surface Finish Removal	Substrate Deterioration	Color Change	Staining
Sure Klean® Vana Trol®	1:6	0	0	0	0
	1:8	0	0	0	0
Enviro Klean® Safety Klean	1:2	0	0	0	0
	1:3	0	0	0	0

0 – No Change**1 – Change – Slight****2 – Change – Moderate****3 – Change – Heavy****4 – Change – Excessive**

Test Results – Limiting Surface Alterations

“Palmer”; Sandstone					
Product	Dilution	Surface Finish Removal	Substrate Deterioration	Color Change	Staining
Sure Klean® Vana Trol®	1:6	0	0	1	0
	1:8	0	0	1	0
Enviro Klean® Safety Klean	1:2	0	0	0	0
	1:3	0	0	0	0
“Santa Barbara”; Limestone					
Product	Dilution	Surface Finish Removal	Substrate Deterioration	Color Change	Staining
Sure Klean® Vana Trol®	1:6	0	0	0	0
	1:8	0	0	0	0
Enviro Klean® Safety Klean	1:2	0	0	0	0
	1:3	0	0	0	0

0 – No Change**1 – Change – Slight****2 – Change – Moderate****3 – Change – Heavy****4 – Change – Excessive**

Photographs – New Construction Cleaning

“Belmont” Limestone; 3 Day Cleaning; Type S Mortar



Sure Klean® Vana Trol® (1:6)	Sure Klean® Vana Trol® (1:8)	Untreated Control
------------------------------------	------------------------------------	-------------------

“Belmont” Limestone; 7 Day Cleaning; Type S Mortar



Sure Klean® Vana Trol® (1:6)	Sure Klean® Vana Trol® (1:8)	Untreated Control
------------------------------------	------------------------------------	-------------------

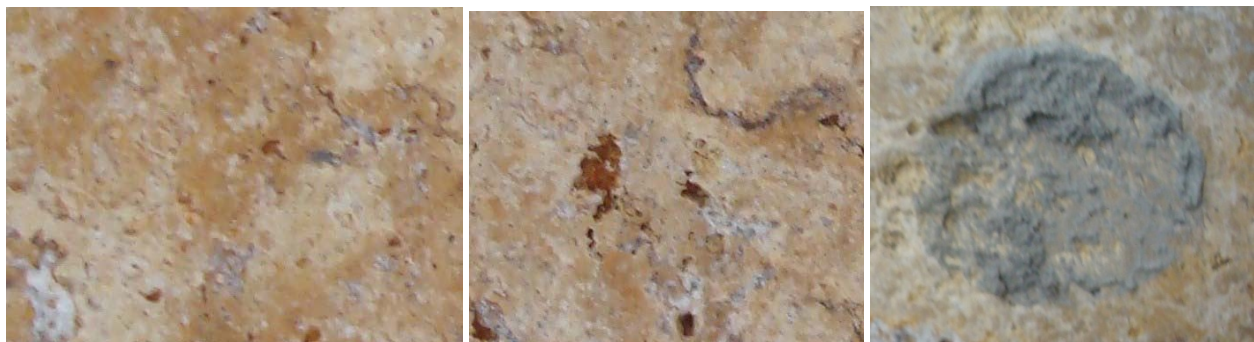
“Belmont” Limestone; 14 Day Cleaning; Type S Mortar



Sure Klean® Vana Trol® (1:6)	Sure Klean® Vana Trol® (1:8)	Untreated Control
------------------------------------	------------------------------------	-------------------

Photographs – New Construction Cleaning**“Kingston” Travertine; 3 Day Cleaning; Type S Mortar**

Sure Klean® Vana Trol® (1:6)	Sure Klean® Vana Trol® (1:8)	Untreated Control
------------------------------------	------------------------------------	-------------------

“Kingston” Travertine; 7 Day Cleaning; Type S Mortar

Sure Klean® Vana Trol® (1:6)	Sure Klean® Vana Trol® (1:8)	Untreated Control
------------------------------------	------------------------------------	-------------------

“Kingston” Travertine; 14 Day Cleaning; Type S Mortar

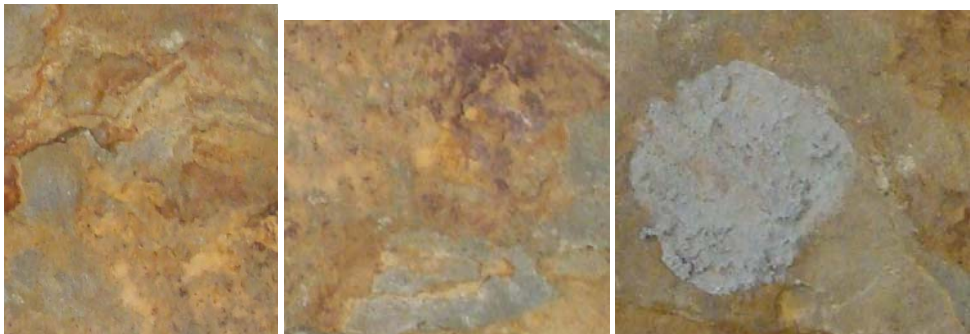
Sure Klean® Vana Trol® (1:6)	Sure Klean® Vana Trol® (1:8)	Untreated Control
------------------------------------	------------------------------------	-------------------

Photographs – New Construction Cleaning

“New England Fieldstone” Sandstone; 3 Day Cleaning; Type S Mortar



Sure Klean [®] Vana Trol [®] (1:6)	Sure Klean [®] Vana Trol [®] (1:8)	Untreated Control
--	--	-------------------



Enviro Klean [®] Safety Klean [®] (1:2)	Enviro Klean [®] Safety Klean [®] (1:3)	Untreated Control
---	---	-------------------

Photographs – New Construction Cleaning

“New England Fieldstone” Sandstone; 7 Day Cleaning; Type S Mortar



Sure Klean® Vana Trol® (1:6)	Sure Klean® Vana Trol® (1:8)	Untreated Control
------------------------------------	------------------------------------	-------------------



Enviro Klean® Safety Klean® (1:2)	Enviro Klean® Safety Klean® (1:3)	Untreated Control
---	---	-------------------

Photographs – New Construction Cleaning

“New England Fieldstone” Sandstone; 14 Day Cleaning; Type S Mortar



Sure Klean [®] Vana Trol [®] (1:6)	Sure Klean [®] Vana Trol [®] (1:8)	Untreated Control
--	--	-------------------



Enviro Klean [®] Safety Klean [®] (1:2)	Enviro Klean [®] Safety Klean [®] (1:3)	Untreated Control
---	---	-------------------

Conclusions – New Construction Cleaning

Based on the test results, all of the submitted samples were efficiently cleaned with Sure Klean® Vana Trol® and Enviro Klean® Safety Klean®. Based on the test results, Sure Klean® Vana Trol® and Enviro Klean® Safety Klean® removed almost all of the excess mortar from the submitted natural stone samples. Sure Klean® Vana Trol® exhibited a slightly white appearance when applied to the samples of "New Castle" and "Palmer."

It is recommended that the selected cleaners always be used in the lowest possible concentration.

Recommendations – New Construction Cleaning

Recommendations for cleaning for the natural stone submitted by Natural Stone Veneers International Inc., Fond Du Lac, WI are provided in the chart below. Recommendations are based on the optimum dilution for complete removal of mortar while limiting surface alterations.

Sample	New Construction Cleaning (Type S Mortar, 14 Day Cleaning)
"Cobblestone" "Hudson LedgeStone" "Virginia LedgeStone" "Canyon Creek" "New England Fieldstone" "Santa Barbara"	Sure Klean® Vana Trol® (1:8) or Enviro Klean® Safety Klean® (1:3)
"Belmont" "Bradford" "Carleton" "Chandler" "Chardonnay" "Fairmont" "Keywest" "Olympia" "Stockholm" "Sutton" "Kingston" "Windsor"	Sure Klean® Vana Trol® (1:8)
"New Castle" "Palmer"	Enviro Klean® Safety Klean® (1:3)

Apply all products in accordance with the manufacturer's recommendation provided on container labels and product data sheets. On-site testing should always be conducted to determine the most appropriate cleaning product and procedures for a particular project. See product literature for additional application and product information.

Protective Water Repellents

The testing described below evaluates the suitability of water repellent treatments.

The surface treatments evaluated were selected for their suitability for application based on the following selection criteria:

1. Weatherproofing properties
2. Color change
3. Ease of application

Description of Products Evaluated – Protective Water Repellents

Consolideck® Saltguard® is a general-purpose silane/siloxane water repellent and chloride screen for concrete and masonry. Saltguard® protects horizontal and vertical surfaces from moisture intrusion and chemical attack of chloride salts, reducing rebar corrosion and surface spalling. Saltguard® may be used on horizontal surfaces such as sidewalks, tile and brick pavers. It also provides excellent protection for retaining walls, bridge pilings and other vertical areas. In coastal areas, Saltguard® protects against salt air by reducing chloride penetration. Saltguard® also prevents deep-seated staining by mud splashes and other waterborne contaminants.

Consolideck® Saltguard® WB is a ready-to-use water-based, VOC compliant silane/siloxane water repellent and "chloride screen" for the protection of concrete and masonry. Saltguard® WB penetrates more deeply than conventional water- or solvent-based water repellents. Low odor and alkaline stable, Saltguard® WB is ideal for field or in-plant application to concrete and most masonry. Saltguard® WB protects horizontal and vertical surfaces from moisture intrusion and chemical attack of chloride salts. In coastal areas, Saltguard® WB protects against salt air by screening chlorides from penetrating through concrete to the reinforcing steel. Saltguard® WB reduces rebar corrosion and surface spalling caused by water-carried salts. Use Saltguard® WB on horizontal surfaces such as driveways, sidewalks, tile or brick pavers. Saltguard® WB provides excellent protection for retaining walls, bridge pilings and other vertical areas exposed to de-icing salts. Saltguard® WB is a ready-to-use effective alternative to conventional solvent-based silanes and siloxanes. Saltguard® WB penetrates and chemically bonds deep within the concrete or masonry substrate to provide long-lasting protection against moisture intrusion and water-related staining or deterioration. Properly applied, Saltguard® WB produces no surface film. Treated surfaces keep their natural breathing characteristics and natural appearance.

Paver Kare® Paver Enhancer is a solvent-based blend of high-quality siloxanes modified to provide excellent water repellency and color enhancement to interlocking concrete, fired clay, porous tile and many types of natural stone surfaces. Paver Enhancer penetrates and reacts with the surface to form a chemical bond, providing long-term durability, alkali resistance and superior breathability.

Paver Kare® Paver Enhancer WB is a long-lasting, penetrating water repellent for enhancing the natural color of most clay, concrete and porous natural stone paving, new or old. This water-based blend of siloxane resins increases paver service-life by providing protection against weather- and water-borne staining and soiling. It also helps pavers resist damage from destructive de-icing salts. Paver Enhancer WB is ideal for interlocking concrete, clay and integrally colored concrete paving, indoors or out. It will not alter the natural texture of treated surfaces.

Stand Off® Color Enhancer brings out the color, warmth and richness of interior limestone, marble, granite and other unpolished natural stone surfaces. Treated surfaces not only look better but resist destructive water penetration and staining from a wide range of contaminants, including oil, grease, food and drink, and dirt. Color Enhancer is perfect for stone counters and tabletops, and stone and terrazzo floors. This penetrating protective treatment won't trap moisture or create a surface sheen. Treated surfaces keep their natural texture.

Stand Off® Color Enhancer WB enhances the natural color and richness of porous natural stone, colored concrete and tile surfaces. Treated stone repels water and the dirt, salt and contaminants water carries. Surfaces look better, last longer, and are easier to clean. Color Enhancer WB is also effective for protecting and improving the appearance of concrete, clay and natural stone pavers, as well as integrally colored concrete paving, indoors or out. It won't alter the natural texture of treated surfaces.

Stand Off® Stone, Tile & Masonry Protector (STMP) is a penetrating water, oil and stain repellent. This easy-to-use, low-odor protective treatment improves stain resistance and simplifies maintenance cleaning of interior and exterior stone,

quarry tile, concrete and masonry surfaces. Surfaces treated with STMP resist staining from oil, food and waterborne matter while retaining their natural color, texture, and breathability.

Description of Products Evaluated – Protective Water Repellents

Stand Off® Limestone & Marble Protector is a clear, penetrating water and oil repellent suitable for use on interior or exterior calcareous surfaces such as limestone, marble and travertine. It's also suitable for many other types of masonry surfaces. Limestone & Marble Protector penetrates deeply to provide surface and subsurface protection without forming a glossy surface film. Treated surfaces retain their natural color, texture and appearance. Limestone & Marble Protector combines high quality siloxane resins with "oleophobic" resins to produce a penetrating water and oil repellent ideal for long-term protection against food, oil and waterborne staining. Unlike conventional penetrating oil repellent products, Limestone & Marble Protector has been modified to ensure effectiveness on limestone, marble and other calcareous or neutral pH surfaces.

Stand Off® SLX100™ Water & Oil Repellent is a combination of water and oil repellency on most substrates to prevent staining by waterborne and oily substances. This modified "neat" silane system offers invisible protection and low volatility. The small molecular structure of SLX100 allows for maximum penetration at coverage rates higher than that of conventional silanes. Depth of penetration is controlled by the application rate (loading rate). This makes SLX100 ideal for protecting granite and other dense, color-sensitive surfaces.

Sure Klean® Weather Seal Natural Stone Treatment is a modified siloxane water repellent developed for limestone, marble and most other traditional masonry surfaces. Natural Stone Treatment penetrates deeply to provide long-lasting protection without altering the natural appearance of the substrate. Unlike conventional siloxane water repellents, Natural Stone Treatment is modified for effectiveness on most limestone, marble and other calcareous surfaces. This product provides water repellent protection superior to more common silane, siloxane, acrylic or metallic stearate water repellents. Natural Stone Treatment reduces the severity of biological staining common to regions with high relative humidity. Treated surfaces resist dark staining and degradation caused by fungal growth, mold and mildew.

Sure Klean® Weather Seal Natural Stone Treatment WB - A low odor, water-based solution of potassium methyl siliconate developed to effectively treat a wide range of natural stone and masonry surfaces. Natural Stone Treatment WB provides long-lasting repellency without altering the natural appearance of the substrate. Natural Stone Treatment WB is used as a surface treatment on natural stone and masonry surfaces to impart a water-repellent surface and reduce water absorption into the substrate. Unlike conventional siliconate water repellents, Natural Stone Treatment WB has been developed to help prevent surface staining during application.

Sure Klean® Weather Seal Siloxane WB Concentrate is a concentrated water repellent designed for dilution with fresh water at the job site. This solvent-free blend of silanes and oligomeric alkoxysiloxanes mixes easily with water to produce a penetrating water repellent ideal for application to dense or porous masonry surfaces. An effective alternative to conventional solvent-based silanes or siloxanes, Siloxane WB penetrates and chemically bonds deep within the masonry substrate to provide long-lasting protection against water-related staining or deterioration. Will not darken, produce a surface film or impair the natural breathing characteristics of treated surfaces.

Sure Klean® Weather Seal Siloxane PD (predilute) is a ready-to-use, water-based silane/siloxane water repellent for concrete and most masonry and stucco surfaces. Siloxane PD will not impair the natural breathing characteristics of treated surfaces. It helps masonry resist cracking, spalling, staining and other damage related to water intrusion. Low odor and alkaline stable, Siloxane PD is ideal for field and in-plant application.

Sure Klean® Weather Seal SL100 Water Repellent is a modified, "neat" silane system that offers invisible protection and low volatility. SL100 protects horizontal and vertical concrete and masonry surfaces against water and waterborne contaminants. The small molecular structure ensures maximum penetration and colorless protection of dense, color-sensitive surfaces. Ideal for GFRG, integrally colored precast concrete and many types of natural stone. The absence of a solvent carrier enables applicators to achieve up to 5 times the coverage rate normally achieved with solvent-reduced protective treatments. Depth of penetration is controlled by the application rate (loading rate).

Sample Preparation – Protective Water Repellents

The submitted samples were scored and allowed to dry for at least 24 hours prior to treatment. All treatments were applied by brush in accordance with the current PROSOCO, Inc. Product Data Sheet application instructions. All treatments were allowed to cure for at least 72 hours prior to testing.

Test Methods – Protective Water Repellents**Water Absorption Tube Test: Horizontal RILEM II.4, 5.0 milliliters, 20 minutes**

The water absorption tube test simulating wind driven and windblown rain conditions was performed. Tests were run with vertical 5.0-milliliter head pressures. Filled to 5.0 milliliters, a water absorption tube produces a 103 mph dynamic wind pressure. See RILEM II.4 Tech Note for additional information.

The ranking system used to evaluate the effectiveness of the products applied to each submitted sample is as follows:

AA = “Above Average” correlates to less than or equal to 20% of the maximum untreated absorption.

A = “Average” correlates to less than or equal to 50% of the maximum untreated absorption.

BA = “Below Average” correlates to greater than 50% of the maximum untreated absorption.

EXAMPLE: If RILEM tubes applied to an untreated sample result in loss of 5.0 mL of water or more, then:

A rating of **AA** *Above Average* water repellent performance would be reported for treatments which result in a loss of no more than:

$$5.0 \text{ mL} \times 20\% = \mathbf{1.0 \text{ mL}}$$

A rating of **A** *Average* water repellent performance would be reported for treatments which result in a loss of no more than:

$$5.0 \text{ mL} \times 50\% = \mathbf{2.5 \text{ mL}}$$

A rating of **BA** *Below Average* water repellent performance would be reported for treatments which result in a loss of more than:

$$5.0 \text{ mL} \times 50\% = \mathbf{2.5 \text{ mL}}$$

Test Results – Protective Water Repellents**Water Absorption Tube Test: Horizontal RILEM II.4, 5.0 milliliters, 20 minutes****AA = Above Average****A = Average****BA = Below Average**

“Cobblestone”; Granite		
	Results in mL loss	Ranking
Untreated Control	- 0.7	--
Paver Kare® Deep Sheen	- 0.0	<u>AA</u>
Paver Kare® Deep Sheen WB	- 0.0	<u>AA</u>
Stand Off® Color Enhancer	- 0.0	<u>AA</u>
Stand Off® Color Enhancer WB	- 0.1	<u>AA</u>

“Cobblestone”; Granite		
	Results in mL loss	Ranking
Untreated Control	- 0.3	--
Sure Klean® Weather Seal Natural Stone Treatment	- 0.0	<u>AA</u>
Sure Klean® Weather Seal Natural Stone Treatment WB	- 0.1	<u>A</u>
Stand Off® Stone, Tile & Masonry Protector (STMP)	- 0.0	<u>AA</u>
Stand Off® SLX100™ Water & Oil Repellent	- 0.1	<u>A</u>
Sure Klean® Weather Seal SL100	- 0.0	<u>AA</u>

“Cobblestone”; Granite		
	Results in mL loss	Ranking
Untreated Control	- 0.4	--
Sure Klean® Weather Seal Blok-Guard® & Graffiti Control	- 0.2	<u>A</u>
Sure Klean® Weather Seal Blok-Guard® & Graffiti Control II	- 0.3	<u>BA</u>

Test Results – Protective Water Repellents**Water Absorption Tube Test: Horizontal RILEM II.4, 5.0 milliliters, 20 minutes****AA** = Above Average**A** = Average**BA** = Below Average

“Belmont”; Limestone		
	Results in mL loss	Ranking
Untreated Control	- 1.5	--
Paver Kare® Deep Sheen	- 0.2	<u>AA</u>
Paver Kare® Deep Sheen WB	- 0.1	<u>AA</u>
Paver Kare® Paver Enhancer	- 0.0	<u>AA</u>
Paver Kare® Paver Enhancer WB	- 0.7	<u>A</u>
Stand Off® Color Enhancer	- 0.3	<u>AA</u>
Stand Off® Color Enhancer WB	- 0.6	<u>A</u>

“Belmont”; Limestone		
	Results in mL loss	Ranking
Untreated Control	- 5.0	--
Sure Klean® Weather Seal Natural Stone Treatment	- 0.2	<u>AA</u>
Sure Klean® Weather Seal Natural Stone Treatment WB	- 0.2	<u>AA</u>
Stand Off® Stone, Tile & Masonry Protector (STMP)	- 2.3	<u>A</u>
Stand Off® Limestone & Marble Protector	- 0.2	<u>AA</u>
Stand Off® SLX100™ Water & Oil Repellent	- 0.1	<u>AA</u>

“Belmont”; Limestone		
	Results in mL loss	Ranking
Untreated Control	- 1.9	--
Sure Klean® Weather Seal Blok-Guard® & Graffiti Control	- 0.3	<u>AA</u>
Sure Klean® Weather Seal Blok-Guard® & Graffiti Control II	- 1.0	<u>BA</u>

Test Results – Protective Water Repellents**Water Absorption Tube Test: Horizontal RILEM II.4, 5.0 milliliters, 20 minutes****AA** = Above Average**A** = Average**BA** = Below Average

“Bradford”; Limestone		
	Results in mL loss	Ranking
Untreated Control	- 0.4	--
Paver Kare® Deep Sheen	- 0.0	<u>AA</u>
Paver Kare® Deep Sheen WB	- 0.2	<u>A</u>
Paver Kare® Paver Enhancer	- 0.0	<u>AA</u>
Paver Kare® Paver Enhancer WB	- 0.3	<u>BA</u>
Stand Off® Color Enhancer	- 0.1	<u>A</u>
Stand Off® Color Enhancer WB	- 0.8	<u>BA</u>

“Bradford”; Limestone		
	Results in mL loss	Ranking
Untreated Control	- 0.5	--
Sure Klean® Weather Seal Natural Stone Treatment	- 0.1	<u>AA</u>
Sure Klean® Weather Seal Natural Stone Treatment WB	- 0.2	<u>A</u>
Stand Off® Stone, Tile & Masonry Protector (STMP)	- 0.2	<u>A</u>
Stand Off® Limestone & Marble Protector	- 0.1	<u>AA</u>
Stand Off® SLX100™ Water & Oil Repellent	- 0.1	<u>AA</u>

“Bradford”; Limestone		
	Results in mL loss	Ranking
Untreated Control	- 1.5	--
Sure Klean® Weather Seal Blok-Guard® & Graffiti Control	- 0.1	<u>AA</u>
Sure Klean® Weather Seal Blok-Guard® & Graffiti Control II	- 0.5	<u>A</u>

Test Results – Protective Water Repellents**Water Absorption Tube Test: Horizontal RILEM II.4, 5.0 milliliters, 20 minutes****AA** = Above Average**A** = Average**BA** = Below Average

“Carleton”; Limestone		
	Results in mL loss	Ranking
Untreated Control	- 0.0	--
Paver Kare® Deep Sheen	- 0.0	<u>AA</u>
Paver Kare® Deep Sheen WB	- 0.0	<u>AA</u>
Paver Kare® Paver Enhancer	- 0.0	<u>AA</u>
Paver Kare® Paver Enhancer WB	- 0.0	<u>AA</u>
Stand Off® Color Enhancer	- 0.0	<u>AA</u>
Stand Off® Color Enhancer WB	- 0.0	<u>AA</u>

“Carleton”; Limestone		
	Results in mL loss	Ranking
Untreated Control	- 0.5	--
Sure Klean® Weather Seal Natural Stone Treatment	- 0.0	<u>AA</u>
Sure Klean® Weather Seal Natural Stone Treatment WB	- 0.1	<u>AA</u>
Stand Off® Stone, Tile & Masonry Protector (STMP)	- 0.0	<u>AA</u>
Stand Off® Limestone & Marble Protector	- 0.1	<u>AA</u>
Stand Off® SLX100™ Water & Oil Repellent	- 0.2	<u>A</u>

“Carleton”; Limestone		
	Results in mL loss	Ranking
Untreated Control	- 0.1	--
Sure Klean® Weather Seal Blok-Guard® & Graffiti Control	- 0.1	<u>BA</u>
Sure Klean® Weather Seal Blok-Guard® & Graffiti Control II	- 0.1	<u>BA</u>

Test Results – Protective Water Repellents

Water Absorption Tube Test: Horizontal RILEM II.4, 5.0 milliliters, 20 minutes**AA** = Above Average**A** = Average**BA** = Below Average

“Chandler”; Limestone		
	Results in mL loss	Ranking
Untreated Control	- 0.1	--
Paver Kare® Deep Sheen	- 0.0	<u>AA</u>
Paver Kare® Deep Sheen WB	- 0.1	<u>BA</u>
Paver Kare® Paver Enhancer	- 0.2	<u>BA</u>
Paver Kare® Paver Enhancer WB	- 0.3	<u>BA</u>
Stand Off® Color Enhancer	- 0.1	<u>BA</u>
Stand Off® Color Enhancer WB	- 0.1	<u>BA</u>

“Chandler”; Limestone		
	Results in mL loss	Ranking
Untreated Control	- 0.1	--
Sure Klean® Weather Seal Natural Stone Treatment	- 0.1	<u>BA</u>
Sure Klean® Weather Seal Natural Stone Treatment WB	- 0.1	<u>BA</u>
Stand Off® Stone, Tile & Masonry Protector (STMP)	- 0.1	<u>BA</u>
Stand Off® Limestone & Marble Protector	- 0.0	<u>AA</u>
Stand Off® SLX100™ Water & Oil Repellent	- 0.1	<u>BA</u>

“Chandler”; Limestone		
	Results in mL loss	Ranking
Untreated Control	- 0.2	--
Sure Klean® Weather Seal Blok-Guard® & Graffiti Control	- 0.1	<u>A</u>
Sure Klean® Weather Seal Blok-Guard® & Graffiti Control II	- 0.0	<u>AA</u>

Test Results – Protective Water Repellents**Water Absorption Tube Test: Horizontal RILEM II.4, 5.0 milliliters, 20 minutes****AA** = Above Average**A** = Average**BA** = Below Average

“Chardonnay”; Limestone		
	Results in mL loss	Ranking
Untreated Control	- 0.3	--
Paver Kare® Deep Sheen	- 0.1	<u>A</u>
Paver Kare® Deep Sheen WB	- 0.1	<u>A</u>
Paver Kare® Paver Enhancer	- 0.0	<u>AA</u>
Paver Kare® Paver Enhancer WB	- 0.0	<u>AA</u>
Stand Off® Color Enhancer	- 0.0	<u>AA</u>
Stand Off® Color Enhancer WB	- 0.1	<u>A</u>

“Chardonnay”; Limestone		
	Results in mL loss	Ranking
Untreated Control	- 0.4	--
Sure Klean® Weather Seal Natural Stone Treatment	- 0.3	<u>BA</u>
Sure Klean® Weather Seal Natural Stone Treatment WB	- 0.2	<u>A</u>
Stand Off® Stone, Tile & Masonry Protector (STMP)	- 0.1	<u>A</u>
Stand Off® Limestone & Marble Protector	- 0.1	<u>A</u>
Stand Off® SLX100™ Water & Oil Repellent	- 0.1	<u>A</u>

“Chardonnay”; Limestone		
	Results in mL loss	Ranking
Untreated Control	- 1.0	--
Sure Klean® Weather Seal Blok-Guard® & Graffiti Control	- 0.1	<u>AA</u>
Sure Klean® Weather Seal Blok-Guard® & Graffiti Control II	- 0.4	<u>A</u>

Test Results – Protective Water Repellents**Water Absorption Tube Test: Horizontal RILEM II.4, 5.0 milliliters, 20 minutes****AA** = Above Average**A** = Average**BA** = Below Average

“Fairmont”; Limestone		
	Results in mL loss	Ranking
Untreated Control	- 0.0	--
Paver Kare® Deep Sheen	- 0.0	<u>AA</u>
Paver Kare® Deep Sheen WB	- 0.0	<u>AA</u>
Paver Kare® Paver Enhancer	- 0.0	<u>AA</u>
Paver Kare® Paver Enhancer WB	- 0.0	<u>AA</u>
Stand Off® Color Enhancer	- 0.0	<u>AA</u>
Stand Off® Color Enhancer WB	- 0.0	<u>AA</u>

“Fairmont”; Limestone		
	Results in mL loss	Ranking
Untreated Control	- 0.0	--
Sure Klean® Weather Seal Natural Stone Treatment	- 0.0	<u>AA</u>
Sure Klean® Weather Seal Natural Stone Treatment WB	- 0.1	<u>BA</u>
Stand Off® Stone, Tile & Masonry Protector (STMP)	- 0.0	<u>AA</u>
Stand Off® Limestone & Marble Protector	- 0.0	<u>AA</u>
Stand Off® SLX100™ Water & Oil Repellent	- 0.0	<u>AA</u>

“Fairmont”; Limestone		
	Results in mL loss	Ranking
Untreated Control	- 0.1	--
Sure Klean® Weather Seal Blok-Guard® & Graffiti Control	- 0.0	<u>AA</u>
Sure Klean® Weather Seal Blok-Guard® & Graffiti Control II	- 0.1	<u>BA</u>

Test Results – Protective Water Repellents**Water Absorption Tube Test: Horizontal RILEM II.4, 5.0 milliliters, 20 minutes****AA** = Above Average**A** = Average**BA** = Below Average

“Keywest”; Limestone		
	Results in mL loss	Ranking
Untreated Control	- 0.1	--
Paver Kare® Deep Sheen	- 0.0	<u>AA</u>
Paver Kare® Deep Sheen WB	- 0.0	<u>AA</u>
Paver Kare® Paver Enhancer	- 0.0	<u>AA</u>
Paver Kare® Paver Enhancer WB	- 0.0	<u>AA</u>
Stand Off® Color Enhancer	- 0.1	<u>BA</u>
Stand Off® Color Enhancer WB	- 0.0	<u>AA</u>

“Keywest”; Limestone		
	Results in mL loss	Ranking
Untreated Control	- 0.1	--
Sure Klean® Weather Seal Natural Stone Treatment	- 0.2	<u>BA</u>
Sure Klean® Weather Seal Natural Stone Treatment WB	- 0.1	<u>BA</u>
Stand Off® Stone, Tile & Masonry Protector (STMP)	- 0.1	<u>BA</u>
Stand Off® Limestone & Marble Protector	- 0.0	<u>AA</u>
Stand Off® SLX100™ Water & Oil Repellent	- 0.0	<u>AA</u>

“Keywest”; Limestone		
	Results in mL loss	Ranking
Untreated Control	- 0.1	--
Sure Klean® Weather Seal Blok-Guard® & Graffiti Control	- 0.1	<u>BA</u>
Sure Klean® Weather Seal Blok-Guard® & Graffiti Control II	- 0.1	<u>BA</u>

Test Results – Protective Water Repellents**Water Absorption Tube Test: Horizontal RILEM II.4, 5.0 milliliters, 20 minutes****AA = Above Average****A = Average****BA = Below Average**

“New Castle”; Limestone		
	Results in mL loss	Ranking
Untreated Control	- 0.5	--
Paver Kare® Deep Sheen	- 0.1	<u>AA</u>
Paver Kare® Deep Sheen WB	- 0.0	<u>AA</u>
Paver Kare® Paver Enhancer	- 0.2	<u>A</u>
Paver Kare® Paver Enhancer WB	- 0.1	<u>AA</u>
Stand Off® Color Enhancer	- 0.1	<u>AA</u>
Stand Off® Color Enhancer WB	- 0.2	<u>A</u>

“New Castle”; Limestone		
	Results in mL loss	Ranking
Untreated Control	- 0.4	--
Sure Klean® Weather Seal Natural Stone Treatment	- 0.2	<u>A</u>
Sure Klean® Weather Seal Natural Stone Treatment WB	- 0.0	<u>AA</u>
Stand Off® Stone, Tile & Masonry Protector (STMP)	- 0.3	<u>BA</u>
Stand Off® Limestone & Marble Protector	- 0.0	<u>AA</u>
Stand Off® SLX100™ Water & Oil Repellent	- 0.3	<u>BA</u>

“New Castle”; Limestone		
	Results in mL loss	Ranking
Untreated Control	- 0.0	--
Sure Klean® Weather Seal Blok-Guard® & Graffiti Control	- 0.0	<u>AA</u>
Sure Klean® Weather Seal Blok-Guard® & Graffiti Control II	- 0.2	<u>BA</u>

Test Results – Protective Water Repellents**Water Absorption Tube Test: Horizontal RILEM II.4, 5.0 milliliters, 20 minutes****AA = Above Average****A = Average****BA = Below Average**

“Olympia”; Limestone		
	Results in mL loss	Ranking
Untreated Control	- 0.5	--
Paver Kare® Deep Sheen	- 0.1	<u>AA</u>
Paver Kare® Deep Sheen WB	- 0.0	<u>AA</u>
Paver Kare® Paver Enhancer	- 0.2	<u>A</u>
Paver Kare® Paver Enhancer WB	- 0.2	<u>A</u>
Stand Off® Color Enhancer	- 0.2	<u>A</u>
Stand Off® Color Enhancer WB	- 0.3	<u>BA</u>

“Olympia”; Limestone		
	Results in mL loss	Ranking
Untreated Control	- 0.6	--
Sure Klean® Weather Seal Natural Stone Treatment	- 0.1	<u>AA</u>
Sure Klean® Weather Seal Natural Stone Treatment WB	- 0.1	<u>AA</u>
Stand Off® Stone, Tile & Masonry Protector (STMP)	- 0.3	<u>A</u>
Stand Off® Limestone & Marble Protector	- 0.2	<u>A</u>
Stand Off® SLX100™ Water & Oil Repellent	- 0.3	<u>A</u>

“Olympia”; Limestone		
	Results in mL loss	Ranking
Untreated Control	- 0.6	--
Sure Klean® Weather Seal Blok-Guard® & Graffiti Control	- 0.3	<u>A</u>
Sure Klean® Weather Seal Blok-Guard® & Graffiti Control II	- 0.2	<u>A</u>

Test Results – Protective Water Repellents**Water Absorption Tube Test: Horizontal RILEM II.4, 5.0 milliliters, 20 minutes****AA** = Above Average**A** = Average**BA** = Below Average

“Stockholm”; Limestone		
	Results in mL loss	Ranking
Untreated Control	- 0.0	--
Paver Kare® Deep Sheen	- 0.0	<u>AA</u>
Paver Kare® Deep Sheen WB	- 0.0	<u>AA</u>
Paver Kare® Paver Enhancer	- 0.0	<u>AA</u>
Paver Kare® Paver Enhancer WB	- 0.0	<u>AA</u>
Stand Off® Color Enhancer	- 0.0	<u>AA</u>
Stand Off® Color Enhancer WB	- 0.0	<u>AA</u>

“Stockholm”; Limestone		
	Results in mL loss	Ranking
Untreated Control	- 0.0	--
Sure Klean® Weather Seal Natural Stone Treatment	- 0.0	<u>AA</u>
Sure Klean® Weather Seal Natural Stone Treatment WB	- 0.0	<u>AA</u>
Stand Off® Stone, Tile & Masonry Protector (STMP)	- 0.0	<u>AA</u>
Stand Off® Limestone & Marble Protector	- 0.1	<u>BA</u>
Stand Off® SLX100™ Water & Oil Repellent	- 0.1	<u>BA</u>

“Stockholm”; Limestone		
	Results in mL loss	Ranking
Untreated Control	- 0.3	--
Sure Klean® Weather Seal Blok-Guard® & Graffiti Control	- 0.2	<u>BA</u>
Sure Klean® Weather Seal Blok-Guard® & Graffiti Control II	- 0.2	<u>BA</u>

Test Results – Protective Water Repellents**Water Absorption Tube Test: Horizontal RILEM II.4, 5.0 milliliters, 20 minutes****AA** = Above Average**A** = Average**BA** = Below Average

“Sutton”; Limestone		
	Results in mL loss	Ranking
Untreated Control	- 0.1	--
Paver Kare® Deep Sheen	- 0.0	<u>AA</u>
Paver Kare® Deep Sheen WB	- 0.1	<u>BA</u>
Paver Kare® Paver Enhancer	- 0.0	<u>AA</u>
Paver Kare® Paver Enhancer WB	- 0.2	<u>BA</u>
Stand Off® Color Enhancer	- 0.0	<u>AA</u>
Stand Off® Color Enhancer WB	- 0.0	<u>AA</u>

“Sutton”; Limestone		
	Results in mL loss	Ranking
Untreated Control	- 0.5	--
Sure Klean® Weather Seal Natural Stone Treatment	- 0.2	<u>A</u>
Sure Klean® Weather Seal Natural Stone Treatment WB	- 0.0	<u>AA</u>
Stand Off® Stone, Tile & Masonry Protector (STMP)	- 0.2	<u>A</u>
Stand Off® Limestone & Marble Protector	- 0.2	<u>A</u>
Stand Off® SLX100™ Water & Oil Repellent	- 0.2	<u>A</u>

“Sutton”; Limestone		
	Results in mL loss	Ranking
Untreated Control	- 0.2	--
Sure Klean® Weather Seal Blok-Guard® & Graffiti Control	- 0.1	<u>A</u>
Sure Klean® Weather Seal Blok-Guard® & Graffiti Control II	- 0.3	<u>BA</u>

Test Results – Protective Water Repellents**Water Absorption Tube Test: Horizontal RILEM II.4, 5.0 milliliters, 20 minutes****AA** = Above Average**A** = Average**BA** = Below Average

“Kingston”; Travertine		
	Results in mL loss	Ranking
Untreated Control	- 1.0	--
Paver Kare® Deep Sheen	- 0.0	<u>AA</u>
Paver Kare® Deep Sheen WB	- 0.1	<u>AA</u>
Paver Kare® Paver Enhancer	- 0.0	<u>AA</u>
Paver Kare® Paver Enhancer WB	- 0.2	<u>AA</u>
Stand Off® Color Enhancer	- 0.3	<u>A</u>
Stand Off® Color Enhancer WB	- 0.5	<u>A</u>

“Kingston”; Travertine		
	Results in mL loss	Ranking
Untreated Control	- 1.4	--
Sure Klean® Weather Seal Natural Stone Treatment	- 0.5	<u>A</u>
Sure Klean® Weather Seal Natural Stone Treatment WB	- 0.1	<u>AA</u>
Stand Off® Stone, Tile & Masonry Protector (STMP)	- 0.0	<u>AA</u>
Stand Off® Limestone & Marble Protector	- 0.3	<u>A</u>
Stand Off® SLX100™ Water & Oil Repellent	- 5.0	<u>BA</u>

“Kingston”; Travertine		
	Results in mL loss	Ranking
Untreated Control	- 1.0	--
Sure Klean® Weather Seal Blok-Guard® & Graffiti Control	- 0.1	<u>AA</u>
Sure Klean® Weather Seal Blok-Guard® & Graffiti Control II	- 0.4	<u>A</u>

Test Results – Protective Water Repellents**Water Absorption Tube Test: Horizontal RILEM II.4, 5.0 milliliters, 20 minutes****AA** = Above Average**A** = Average**BA** = Below Average

“Windsor”; Travertine		
	Results in mL loss	Ranking
Untreated Control	- 5.0	--
Paver Kare® Deep Sheen	- 0.0	<u>AA</u>
Paver Kare® Deep Sheen WB	- 0.0	<u>AA</u>
Paver Kare® Paver Enhancer	- 1.0	<u>AA</u>
Paver Kare® Paver Enhancer WB	- 1.0	<u>AA</u>
Stand Off® Color Enhancer	- 0.7	<u>AA</u>
Stand Off® Color Enhancer WB	- 0.1	<u>AA</u>

“Windsor”; Travertine		
	Results in mL loss	Ranking
Untreated Control	- 5.0	--
Sure Klean® Weather Seal Natural Stone Treatment	- 0.2	<u>AA</u>
Sure Klean® Weather Seal Natural Stone Treatment WB	- 0.3	<u>AA</u>
Stand Off® Stone, Tile & Masonry Protector (STMP)	- 0.2	<u>AA</u>
Stand Off® Limestone & Marble Protector	- 0.2	<u>AA</u>
Stand Off® SLX100™ Water & Oil Repellent	- 5.0	<u>BA</u>

“Windsor”; Travertine		
	Results in mL loss	Ranking
Untreated Control	- 5.0	--
Sure Klean® Weather Seal Blok-Guard® & Graffiti Control	- 0.2	<u>AA</u>
Sure Klean® Weather Seal Blok-Guard® & Graffiti Control II	- 0.3	<u>AA</u>

Test Results – Protective Water Repellents**Water Absorption Tube Test: Horizontal RILEM II.4, 5.0 milliliters, 20 minutes****AA** = Above Average**A** = Average**BA** = Below Average

“Hudson LedgeStone”; Quartzite		
Products Evaluated	Results in mL loss	Ranking
Untreated Control	- 0.1	--
Paver Kare® Deep Sheen	- 0.0	<u>AA</u>
Paver Kare® Deep Sheen WB	- 0.0	<u>AA</u>
Paver Kare® Paver Enhancer	- 0.0	<u>AA</u>
Paver Kare® Paver Enhancer WB	- 0.0	<u>AA</u>
Stand Off® Color Enhancer	- 0.0	<u>AA</u>
Stand Off® Color Enhancer WB	- 0.0	<u>AA</u>

“Hudson LedgeStone”; Quartzite		
Products Evaluated	Results in mL loss	Ranking
Untreated Control	- 0.0	--
Sure Klean® Weather Seal Siloxane PD	- 0.0	<u>AA</u>
Consolideck® Saltguard®	- 0.0	<u>AA</u>
Consolideck® Saltguard® WB	- 0.0	<u>AA</u>

“Hudson LedgeStone”; Quartzite		
Products Evaluated	Results in mL loss	Ranking
Untreated Control	- 0.1	--
Sure Klean® Weather Seal Natural Stone Treatment	- 0.1	<u>BA</u>
Sure Klean® Weather Seal Natural Stone Treatment WB	- 0.0	<u>AA</u>
Stand Off® Stone, Tile & Masonry Protector (STMP)	- 0.1	<u>BA</u>
Stand Off® SLX100™ Water & Oil Repellent	- 0.0	<u>AA</u>
Sure Klean® Weather Seal SL100	- 0.0	<u>AA</u>

Test Results – Protective Water Repellents

“Hudson LedgeStone”; Quartzite		
	Results in mL loss	Ranking
Untreated Control	- 0.2	--
Sure Klean® Weather Seal Blok-Guard® & Graffiti Control	- 0.0	<u>AA</u>
Sure Klean® Weather Seal Blok-Guard® & Graffiti Control II	- 0.1	<u>A</u>

Test Results – Protective Water Repellents**Water Absorption Tube Test: Horizontal RILEM II.4, 5.0 milliliters, 20 minutes****AA = Above Average****A = Average****BA = Below Average**

“Virginia LedgeStone”; Quartzite		
Products Evaluated	Results in mL loss	Ranking
Untreated Control	- 0.2	--
Paver Kare® Deep Sheen	- 0.0	<u>AA</u>
Paver Kare® Deep Sheen WB	- 0.0	<u>AA</u>
Paver Kare® Paver Enhancer	- 0.0	<u>AA</u>
Paver Kare® Paver Enhancer WB	- 0.0	<u>AA</u>
Stand Off® Color Enhancer	- 0.0	<u>AA</u>
Stand Off® Color Enhancer WB	- 0.0	<u>AA</u>

“Virginia LedgeStone”; Quartzite		
Products Evaluated	Results in mL loss	Ranking
Untreated Control	- 0.1	--
Sure Klean® Weather Seal Siloxane PD	- 0.0	<u>AA</u>
Consolideck® Saltguard®	- 0.0	<u>AA</u>
Consolideck® Saltguard® WB	- 0.0	<u>AA</u>

“Virginia LedgeStone”; Quartzite		
Products Evaluated	Results in mL loss	Ranking
Untreated Control	- 0.0	--
Sure Klean® Weather Seal Natural Stone Treatment	- 0.1	<u>BA</u>
Sure Klean® Weather Seal Natural Stone Treatment WB	- 0.0	<u>AA</u>
Stand Off® Stone, Tile & Masonry Protector (STMP)	- 0.1	<u>BA</u>
Stand Off® SLX100™ Water & Oil Repellent	- 0.0	<u>AA</u>
Sure Klean® Weather Seal SL100	- 0.0	<u>AA</u>

Test Results – Protective Water Repellents

“Virginia LedgeStone”; Quartzite		
	Results in mL loss	Ranking
Untreated Control	- 0.4	--
Sure Klean® Weather Seal Blok-Guard® & Graffiti Control	- 0.0	<u>AA</u>
Sure Klean® Weather Seal Blok-Guard® & Graffiti Control II	- 0.1	<u>A</u>

Test Results – Protective Water Repellents**Water Absorption Tube Test: Horizontal RILEM II.4, 5.0 milliliters, 20 minutes****AA** = Above Average**A** = Average**BA** = Below Average

“Canyon Creek”; Sandstone		
Products Evaluated	Results in mL loss	Ranking
Untreated Control	- 0.5	--
Paver Kare® Deep Sheen	- 0.1	<u>AA</u>
Paver Kare® Deep Sheen WB	- 0.1	<u>AA</u>
Paver Kare® Paver Enhancer	- 0.1	<u>AA</u>
Paver Kare® Paver Enhancer WB	- 0.2	<u>A</u>
Stand Off® Color Enhancer	- 0.1	<u>AA</u>
Stand Off® Color Enhancer WB	- 0.1	<u>AA</u>

“Canyon Creek”; Sandstone		
Products Evaluated	Results in mL loss	Ranking
Untreated Control	-1.0	--
Sure Klean® Weather Seal Siloxane WB Concentrate	- 0.1	<u>AA</u>
Sure Klean® Weather Seal Siloxane PD	- 0.4	<u>A</u>
Consolideck® Saltguard®	- 0.1	<u>AA</u>
Consolideck® Saltguard® WB	- 0.1	<u>AA</u>

“Canyon Creek”; Sandstone		
Products Evaluated	Results in mL loss	Ranking
Untreated Control	- 0.3	--
Sure Klean® Weather Seal Natural Stone Treatment	- 0.0	<u>AA</u>
Sure Klean® Weather Seal Natural Stone Treatment WB	- 0.1	<u>A</u>
Stand Off® Stone, Tile & Masonry Protector (STMP)	- 0.2	<u>BA</u>
Sure Klean® Weather Seal SL100	- 0.2	<u>BA</u>

Test Results – Protective Water Repellents**Water Absorption Tube Test: Horizontal RILEM II.4, 5.0 milliliters, 20 minutes****AA = Above Average****A = Average****BA = Below Average**

“Canyon Creek”; Sandstone		
	Results in mL loss	Ranking
Untreated Control	- 1.5	--
Sure Klean® Weather Seal Blok-Guard® & Graffiti Control	- 0.1	<u>AA</u>
Sure Klean® Weather Seal Blok-Guard® & Graffiti Control II	- 0.3	<u>AA</u>

Test Results – Protective Water Repellents**Water Absorption Tube Test: Horizontal RILEM II.4, 5.0 milliliters, 20 minutes****AA** = Above Average**A** = Average**BA** = Below Average

“New England Fieldstone”; Sandstone		
Products Evaluated	Results in mL loss	Ranking
Untreated Control	- 0.2	--
Paver Kare® Deep Sheen	- 0.0	<u>AA</u>
Paver Kare® Deep Sheen WB	- 0.2	<u>BA</u>
Paver Kare® Paver Enhancer	- 0.0	<u>AA</u>
Paver Kare® Paver Enhancer WB	- 0.1	<u>A</u>
Stand Off® Color Enhancer	- 0.0	<u>AA</u>
Stand Off® Color Enhancer WB	- 0.0	<u>AA</u>

“New England Fieldstone”; Sandstone		
Products Evaluated	Results in mL loss	Ranking
Untreated Control	- 0.3	--
Sure Klean® Weather Seal Siloxane WB Concentrate	- 0.0	<u>AA</u>
Sure Klean® Weather Seal Siloxane PD	- 0.4	<u>BA</u>
Consolideck® Saltguard®	- 0.2	<u>BA</u>
Consolideck® Saltguard® WB	- 0.1	<u>A</u>

“New England Fieldstone”; Sandstone		
Products Evaluated	Results in mL loss	Ranking
Untreated Control	- 0.3	--
Sure Klean® Weather Seal Natural Stone Treatment	- 0.1	<u>A</u>
Sure Klean® Weather Seal Natural Stone Treatment WB	- 0.3	<u>BA</u>
Stand Off® Stone, Tile & Masonry Protector (STMP)	- 0.1	<u>A</u>
Sure Klean® Weather Seal SL100	- 0.3	<u>BA</u>

Test Results – Protective Water Repellents**Water Absorption Tube Test: Horizontal RILEM II.4, 5.0 milliliters, 20 minutes****AA = Above Average****A = Average****BA = Below Average**

“New England Fieldstone”; Sandstone		
	Results in mL loss	Ranking
Untreated Control	- 0.2	--
Sure Klean® Weather Seal Blok-Guard® & Graffiti Control	- 0.2	<u>BA</u>
Sure Klean® Weather Seal Blok-Guard® & Graffiti Control II	- 0.2	<u>BA</u>

Test Results – Protective Water Repellents**Water Absorption Tube Test: Horizontal RILEM II.4, 5.0 milliliters, 20 minutes****AA** = Above Average**A** = Average**BA** = Below Average

“Palmer”; Sandstone		
Products Evaluated	Results in mL loss	Ranking
Untreated Control	- 3.5	--
Paver Kare® Deep Sheen	- 0.0	<u>AA</u>
Paver Kare® Deep Sheen WB	- 1.2	<u>AA</u>
Paver Kare® Paver Enhancer	- 0.1	<u>AA</u>
Paver Kare® Paver Enhancer WB	- 0.2	<u>AA</u>
Stand Off® Color Enhancer	- 0.0	<u>AA</u>
Stand Off® Color Enhancer WB	- 1.2	<u>AA</u>

“Palmer”; Sandstone		
Products Evaluated	Results in mL loss	Ranking
Untreated Control	- 0.5	--
Sure Klean® Weather Seal Siloxane WB Concentrate	- 0.0	<u>AA</u>
Sure Klean® Weather Seal Siloxane PD	- 0.2	<u>A</u>
Consolideck® Saltguard®	- 0.2	<u>A</u>
Consolideck® Saltguard® WB	- 0.0	<u>AA</u>

“Palmer”; Sandstone		
Products Evaluated	Results in mL loss	Ranking
Untreated Control	- 0.2	--
Sure Klean® Weather Seal Natural Stone Treatment	- 0.1	<u>A</u>
Sure Klean® Weather Seal Natural Stone Treatment WB	- 0.1	<u>A</u>
Stand Off® Stone, Tile & Masonry Protector (STMP)	- 0.2	<u>BA</u>
Sure Klean® Weather Seal SL100	- 0.1	<u>A</u>

Test Results – Protective Water Repellents**Water Absorption Tube Test: Horizontal RILEM II.4, 5.0 milliliters, 20 minutes****AA = Above Average****A = Average****BA = Below Average**

“Palmer”; Sandstone		
	Results in mL loss	Ranking
Untreated Control	- 0.8	--
Sure Klean® Weather Seal Blok-Guard® & Graffiti Control	- 0.0	<u>AA</u>
Sure Klean® Weather Seal Blok-Guard® & Graffiti Control II	- 0.2	<u>AA</u>

Test Results – Protective Water Repellents**Water Absorption Tube Test: Horizontal RILEM II.4, 5.0 milliliters, 20 minutes****AA** = Above Average**A** = Average**BA** = Below Average

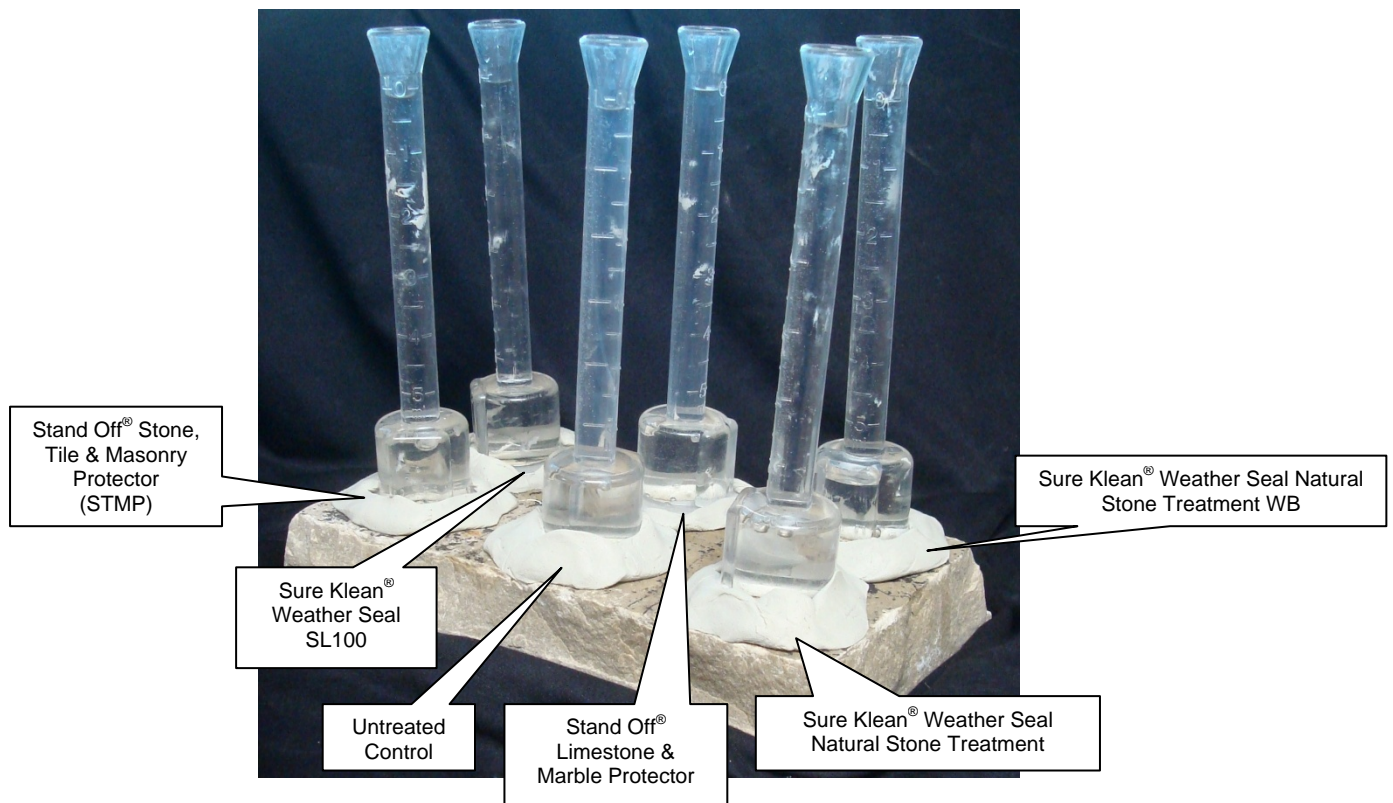
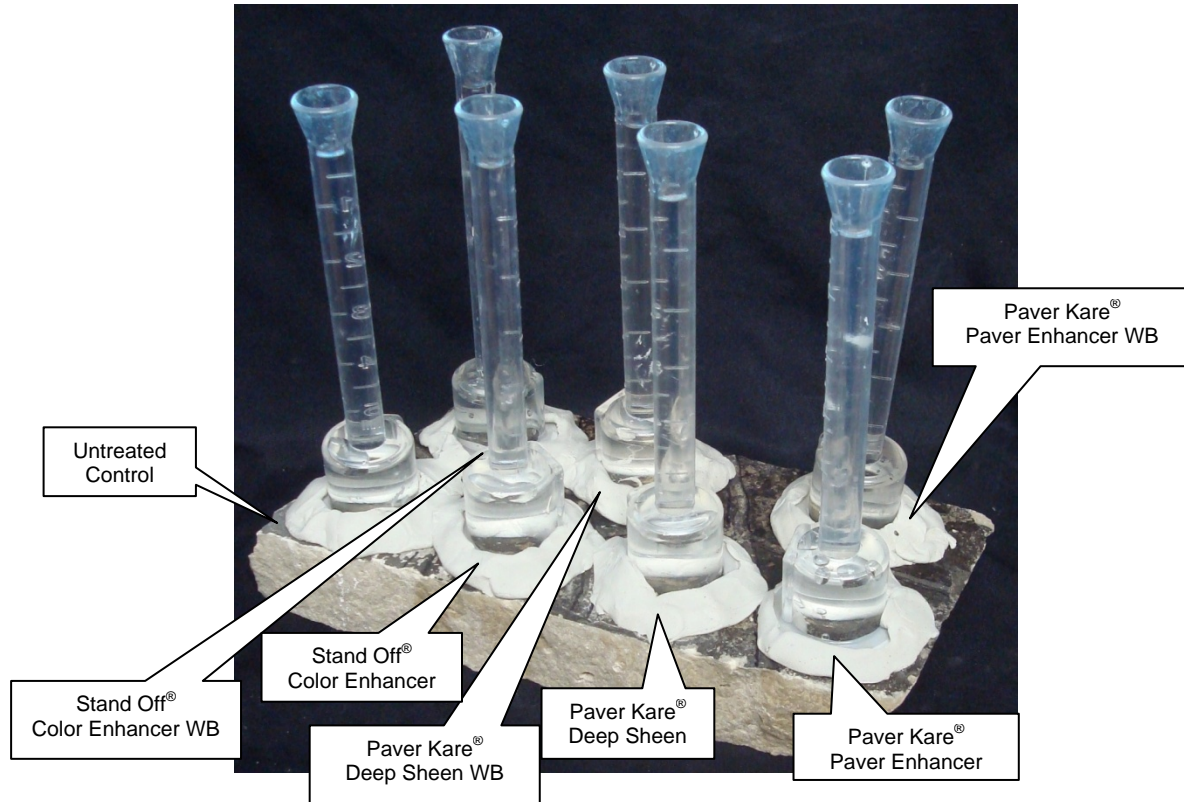
“Santa Barbara”; Sandstone		
Products Evaluated	Results in mL loss	Ranking
Untreated Control	> -5.0	--
Paver Kare® Deep Sheen	- 2.0	<u>A</u>
Paver Kare® Deep Sheen WB	- 1.0	<u>AA</u>
Paver Kare® Paver Enhancer	- 0.9	<u>AA</u>
Paver Kare® Paver Enhancer WB	- 3.1	<u>BA</u>
Stand Off® Color Enhancer	> -5.0	<u>BA</u>
Stand Off® Color Enhancer WB	- 3.6	<u>BA</u>

“Santa Barbara”; Sandstone		
Products Evaluated	Results in mL loss	Ranking
Untreated Control	- 3.0	--
Sure Klean® Weather Seal Siloxane WB Concentrate	- 0.0	<u>AA</u>
Sure Klean® Weather Seal Siloxane PD	- 0.1	<u>AA</u>
Consolideck® Saltguard®	- 0.1	<u>AA</u>
Consolideck® Saltguard® WB	- 0.0	<u>AA</u>

“Santa Barbara”; Sandstone		
Products Evaluated	Results in mL loss	Ranking
Untreated Control	- 4.0	--
Sure Klean® Weather Seal Natural Stone Treatment	- 0.1	<u>AA</u>
Sure Klean® Weather Seal Natural Stone Treatment WB	- 1.0	<u>A</u>
Stand Off® Stone, Tile & Masonry Protector (STMP)	- 1.2	<u>A</u>
Sure Klean® Weather Seal SL100	- 0.3	<u>AA</u>

Test Results – Protective Water Repellents**Water Absorption Tube Test: Horizontal RILEM II.4, 5.0 milliliters, 20 minutes****AA = Above Average****A = Average****BA = Below Average**

“Santa Barbara”; Sandstone		
	Results in mL loss	Ranking
Untreated Control	- 0.2	--
Sure Klean® Weather Seal Blok-Guard® & Graffiti Control	- 0.6	<u>BA</u>
Sure Klean® Weather Seal Blok-Guard® & Graffiti Control II	- 0.8	<u>BA</u>

Photographs – Protective Water Repellents**“Stockholm”, Horizontal RILEM II.4, 5.0 milliliters, 20 minutes**

Conclusions – Protective Water Repellents

In the RILEM tests, results indicated that at least four of the treatments evaluated provided above average water repellent protection to each type of natural stone. In addition, some of the water repellents exhibited a moderate to significant color enhancement on the natural stone samples evaluated (See color and sheen enhancement section).

Recommendations – Protective Water Repellents

Recommendations for water repellent treatments for each type of natural stone submitted by Natural Stone Veneers International Inc., Fond du Lac, WI are provided in the chart below. Recommendations are based on the treatments that proved most effective at providing water repellency on the submitted samples.

Sample	Protective Water Repellents
"Cobblestone"	<p>* Paver Kare® Deep Sheen</p> <p>Paver Kare® Deep Sheen WB</p> <p>* Stand Off® Color Enhancer</p> <p>Stand Off® Color Enhancer WB</p> <p>* Stand Off® SLX100™ Water & Oil Repellent</p> <p>* Sure Klean® Weather Seal Natural Stone Treatment</p> <p>Sure Klean® Weather Seal Natural Stone Treatment WB</p> <p>* Sure Klean® Weather Seal SL100</p> <p>Stand Off® Stone, Tile & Masonry Protector (STMP)</p> <p>* Sure Klean® Weather Seal Blok-Guard® & Graffiti Control</p>
"Belmont"	<p>* Paver Kare® Deep Sheen</p> <p>Paver Kare® Deep Sheen WB</p> <p>* Paver Kare® Paver Enhancer</p> <p>Paver Kare® Paver Enhancer WB</p> <p>* Stand Off® Color Enhancer</p> <p>Stand Off® Color Enhancer WB</p> <p>* Stand Off® SLX100™ Water & Oil Repellent</p> <p>* Stand Off® Limestone & Marble Protector</p> <p>Stand Off® Stone, Tile & Masonry Protector (STMP)</p> <p>* Sure Klean® Weather Seal Natural Stone Treatment</p> <p>Sure Klean® Weather Seal Natural Stone Treatment WB</p> <p>* Sure Klean® Weather Seal Blok-Guard® & Graffiti Control</p>

Recommendations – Protective Water Repellents

Sample	Protective Water Repellents
"Bradford"	<p>* Paver Kare® Deep Sheen</p> <p>Paver Kare® Deep Sheen WB</p> <p>* Paver Kare® Paver Enhancer</p> <p>* Stand Off® Color Enhancer</p> <p>* Stand Off® SLX100™ Water & Oil Repellent</p> <p>* Stand Off® Limestone & Marble Protector</p> <p>Stand Off® Stone, Tile & Masonry Protector (STMP)</p> <p>* Sure Klean® Weather Seal Natural Stone Treatment</p> <p>Sure Klean® Weather Seal Natural Stone Treatment WB</p> <p>* Sure Klean® Weather Seal Blok-Guard® & Graffiti Control</p> <p>Sure Klean® Weather Seal Blok-Guard® & Graffiti Control II</p>
"Carleton"	<p>* Paver Kare® Deep Sheen</p> <p>Paver Kare® Deep Sheen WB</p> <p>* Paver Kare® Paver Enhancer</p> <p>Paver Kare® Paver Enhancer WB</p> <p>* Stand Off® Color Enhancer</p> <p>Stand Off® Color Enhancer WB</p> <p>* Stand Off® SLX100™ Water & Oil Repellent</p> <p>* Stand Off® Limestone & Marble Protector</p> <p>Stand Off® Stone, Tile & Masonry Protector (STMP)</p> <p>* Sure Klean® Weather Seal Natural Stone Treatment</p> <p>Sure Klean® Weather Seal Natural Stone Treatment WB</p>
"Chandler"	<p>* Paver Kare® Deep Sheen</p> <p>* Stand Off® Limestone & Marble Protector</p> <p>* Sure Klean® Weather Seal Blok-Guard® & Graffiti Control</p> <p>Sure Klean® Weather Seal Blok-Guard® & Graffiti Control II</p>

Recommendations – Protective Water Repellents

Sample	Protective Water Repellents
"Chardonnay"	<p>* Paver Kare® Deep Sheen</p> <p>Paver Kare® Deep Sheen WB</p> <p>* Paver Kare® Paver Enhancer</p> <p>Paver Kare® Paver Enhancer WB</p> <p>* Stand Off® Color Enhancer</p> <p>Stand Off® Color Enhancer WB</p> <p>* Stand Off® SLX100™ Water & Oil Repellent</p> <p>* Stand Off® Limestone & Marble Protector</p> <p>Stand Off® Stone, Tile & Masonry Protector (STMP)</p> <p>Sure Klean® Weather Seal Natural Stone Treatment WB</p> <p>* Sure Klean® Weather Seal Blok-Guard® & Graffiti Control</p> <p>Sure Klean® Weather Seal Blok-Guard® & Graffiti Control II</p>

Recommendations – Protective Water Repellents

Sample	Protective Water Repellents
"Fairmont"	<p>* Paver Kare® Deep Sheen</p> <p>Paver Kare® Deep Sheen WB</p> <p>* Paver Kare® Paver Enhancer</p> <p>Paver Kare® Paver Enhancer WB</p> <p>* Stand Off® Color Enhancer</p> <p>Stand Off® Color Enhancer WB</p> <p>* Stand Off® SLX100™ Water & Oil Repellent</p> <p>* Stand Off® Limestone & Marble Protector</p> <p>Stand Off® Stone, Tile & Masonry Protector (STMP)</p> <p>* Sure Klean® Weather Seal Natural Stone Treatment</p> <p>* Sure Klean® Weather Seal Blok-Guard® & Graffiti Control</p>
"Keywest"	<p>* Paver Kare® Deep Sheen</p> <p>Paver Kare® Deep Sheen WB</p> <p>* Paver Kare® Paver Enhancer</p> <p>Paver Kare® Paver Enhancer WB</p> <p>* Stand Off® Color Enhancer WB</p> <p>* Stand Off® SLX100™ Water & Oil Repellent</p> <p>* Stand Off® Limestone & Marble Protector</p>
"New Castle"	<p>* Paver Kare® Deep Sheen</p> <p>Paver Kare® Deep Sheen WB</p> <p>* Paver Kare® Paver Enhancer</p> <p>Paver Kare® Paver Enhancer WB</p> <p>* Stand Off® Color Enhancer</p> <p>Stand Off® Color Enhancer WB</p> <p>* Stand Off® Limestone & Marble Protector</p> <p>* Sure Klean® Weather Seal Natural Stone Treatment</p> <p>Sure Klean® Weather Seal Natural Stone Treatment WB</p> <p>* Sure Klean® Weather Seal Blok-Guard® & Graffiti Control</p>

Recommendations – Protective Water Repellents

Sample	Protective Water Repellents
"Olympia"	<p>* Paver Kare® Deep Sheen</p> <p>Paver Kare® Deep Sheen WB</p> <p>* Paver Kare® Paver Enhancer</p> <p>Paver Kare® Paver Enhancer WB</p> <p>* Stand Off® Color Enhancer</p> <p>* Stand Off® Limestone & Marble Protector</p> <p>* Stand Off® SLX100™ Water & Oil Repellent</p> <p>* Sure Klean® Weather Seal Natural Stone Treatment</p> <p>Sure Klean® Weather Seal Natural Stone Treatment WB</p> <p>Stand Off® Stone, Tile & Masonry Protector (STMP)</p> <p>* Sure Klean® Weather Seal Blok-Guard® & Graffiti Control</p> <p>Sure Klean® Weather Seal Blok-Guard® & Graffiti Control II</p>
"Stockholm"	<p>* Paver Kare® Deep Sheen</p> <p>WB</p> <p>Stand Off® Stone, Tile & Masonry Protector (STMP)</p>

Recommendations – Protective Water Repellents

Sample	Protective Water Repellents
"Sutton"	<p>* Paver Kare® Deep Sheen</p> <p>Paver Kare® Paver Enhancer</p> <p>* Stand Off® Color Enhancer</p> <p>Stand Off® Color Enhancer WB</p> <p>* Stand Off® Limestone & Marble Protector</p> <p>* Stand Off® SLX100™ Water & Oil Repellent</p> <p>* Sure Klean® Weather Seal Natural Stone Treatment</p> <p>Sure Klean® Weather Seal Natural Stone Treatment WB</p> <p>Stand Off® Stone, Tile & Masonry Protector (STMP)</p> <p>* Sure Klean® Weather Seal Blok-Guard® & Graffiti Control</p>
<p>"Windsor"</p> <p>"Kingston"</p>	<p>* Paver Kare® Deep Sheen</p> <p>Paver Kare® Deep Sheen WB</p> <p>* Paver Kare® Paver Enhancer</p> <p>Paver Kare® Paver Enhancer WB</p> <p>* Stand Off® Color Enhancer</p> <p>Stand Off® Color Enhancer WB</p> <p>* Stand Off® Limestone & Marble Protector</p> <p>Stand Off® Stone, Tile & Masonry Protector (STMP)</p> <p>* Sure Klean® Weather Seal Natural Stone Treatment</p> <p>Sure Klean® Weather Seal Natural Stone Treatment WB</p> <p>* Sure Klean® Weather Seal Blok-Guard® & Graffiti Control</p> <p>Sure Klean® Weather Seal Blok-Guard® & Graffiti Control II</p>

Recommendations – Protective Water Repellents

Sample	Protective Water Repellents
<p>"Hudson Ledgerstone"</p> <p>"Virginia Ledgerstone"</p>	<p>* Paver Kare® Deep Sheen</p> <p>Paver Kare® Deep Sheen WB</p> <p>* Paver Kare® Paver Enhancer</p> <p>Paver Kare® Paver Enhancer WB</p> <p>* Stand Off® Color Enhancer</p> <p>Stand Off® Color Enhancer WB</p> <p>* Stand Off® SLX100™ Water & Oil Repellent</p> <p>Sure Klean® Weather Seal Natural Stone Treatment WB</p> <p>Sure Klean® Weather Seal Siloxane PD</p> <p>* Consolideck® Saltguard®</p> <p>Consolideck® Saltguard® WB</p> <p>* Sure Klean® Weather Seal SL100</p> <p>* Sure Klean® Weather Seal Blok-Guard® & Graffiti Control</p> <p>Sure Klean® Weather Seal Blok-Guard® & Graffiti Control II</p>
<p>"Canyon Creek"</p>	<p>* Paver Kare® Deep Sheen</p> <p>Paver Kare® Deep Sheen WB</p> <p>* Paver Kare® Paver Enhancer</p> <p>Paver Kare® Paver Enhancer WB</p> <p>* Stand Off® Color Enhancer</p> <p>Stand Off® Color Enhancer WB</p> <p>Sure Klean® Weather Seal Siloxane WB Concentrate</p> <p>Sure Klean® Weather Seal Siloxane PD</p> <p>* Consolideck® Saltguard®</p> <p>Consolideck® Saltguard® WB</p> <p>* Sure Klean® Weather Seal Natural Stone Treatment</p> <p>Sure Klean® Weather Seal Natural Stone Treatment WB</p> <p>* Sure Klean® Weather Seal Blok-Guard® & Graffiti Control</p> <p>Sure Klean® Weather Seal Blok-Guard® & Graffiti Control II</p>

Recommendations – Protective Water Repellents

Sample	Protective Water Repellents
"New England Fieldstone"	<p>* Paver Kare® Deep Sheen</p> <p>Paver Kare® Paver Enhancer</p> <p>Paver Kare® Paver Enhancer WB</p> <p>* Stand Off® Color Enhancer</p> <p>Stand Off® Color Enhancer WB</p> <p>Sure Klean® Weather Seal Siloxane WB Concentrate</p> <p>Consolideck® Saltguard® WB</p> <p>* Sure Klean® Weather Seal Natural Stone Treatment</p> <p>Stand Off® Stone, Tile & Masonry Protector (STMP)</p>
"Palmer"	<p>* Paver Kare® Deep Sheen</p> <p>Paver Kare® Deep Sheen WB</p> <p>* Paver Kare® Paver Enhancer</p> <p>Paver Kare® Paver Enhancer WB</p> <p>* Stand Off® Color Enhancer</p> <p>Stand Off® Color Enhancer WB</p> <p>Sure Klean® Weather Seal Siloxane WB Concentrate</p> <p>Sure Klean® Weather Seal Siloxane PD</p> <p>* Consolideck® Saltguard®</p> <p>Consolideck® Saltguard® WB</p> <p>* Sure Klean® Weather Seal Natural Stone Treatment</p> <p>Sure Klean® Weather Seal Natural Stone Treatment WB</p> <p>* Sure Klean® Weather Seal SL100</p> <p>* Sure Klean® Weather Seal Blok-Guard® & Graffiti Control</p> <p>Sure Klean® Weather Seal Blok-Guard® & Graffiti Control II</p>

Recommendations – Protective Water Repellents

Sample	Protective Water Repellents
"Santa Barbara"	<p>* Paver Kare® Deep Sheen</p> <p>Paver Kare® Deep Sheen WB</p> <p>* Paver Kare® Paver Enhancer</p> <p>Sure Klean® Weather Seal Siloxane WB Concentrate</p> <p>Sure Klean® Weather Seal Siloxane PD</p> <p>* Consolideck® Saltguard®</p> <p>Consolideck® Saltguard® WB</p> <p>* Sure Klean® Weather Seal Natural Stone Treatment</p> <p>Sure Klean® Weather Seal Natural Stone Treatment WB</p> <p>Stand Off® Stone, Tile & Masonry Protector (STMP)</p> <p>* Sure Klean® Weather Seal SL100</p>

* **NOTE:** Consolideck® Saltguard®, Paver Kare® Deep Sheen, Paver Kare® Paver Enhancer, Stand Off® Color Enhancer, Stand Off® Limestone & Marble Protector, Stand Off® SLX100™ Water & Oil Repellent, Sure Klean® Weather Seal Blok-Guard® & Graffiti Control, Sure Klean® Weather Seal Natural Stone Treatment, and Sure Klean® Weather are manufactured and marketed in compliance with VOC regulations. These products may not be suitable for sale in states and districts with more restrictive regulations.

The ability of a water repellent treatment to prevent the ingress of water is affected by a variety of factors. Therefore, on-site testing should be carried out for all installations with the recommended systems to ensure job site workmanship yields equivalent results.

Apply all products in accordance with the manufacturer's recommendation provided on container labels and product data sheets. On-site testing should be conducted to determine the most appropriate water repellent product and procedures for a particular project. See product literature for additional application and product information.

Color and Sheen Enhancement

This evaluation compares the effectiveness of the evaluated products in providing color and/or sheen enhancement to the submitted samples.

Description of Product Evaluated – Color and Sheen Enhancement

Paver Kare® Deep Sheen is the perfect treatment for pavers, inside or out. This durable protective treatment weather- and stain-proofs new or newly cleaned pavers, giving them a premium, vibrant gloss and shine. Not just for concrete, Deep Sheen adds luster and brings out the real beauty of clay and stone pavers, too. Highly tested Deep Sheen will not “yellow,” blush or dull-out. Deep Sheen’s chemical-resistant, glossy finish guards pavers against any number of etching and staining acidic and alkaline contaminants, including food, drinks, cleaning chemicals and more. Fast-drying and non-yellowing Deep Sheen is ideal for paver installations of any size, new or old.

Paver Kare® Deep Sheen WB is the perfect treatment for concrete, clay or stone pavers, inside or out. This durable, water-borne protective treatment weather and stain proofs new or newly cleaned pavers, giving them a premium, vibrant gloss and shine. This water-borne treatment complies with all known AIM VOC regulations nationwide. Deep Sheen WB’s glossy finish guards pavers against etching and staining from acidic and alkaline contaminants, including food, drinks, cleaning chemicals and more. Fast-drying, non-blushing and non-yellowing, Deep Sheen WB is ideal for paver installations of any size – new or old.

Paver Kare® Paver Enhancer is a solvent-based blend of high-quality siloxanes modified to provide excellent water repellency and color enhancement to interlocking concrete, fired clay, porous tile and many types of natural stone surfaces. Paver Enhancer penetrates and reacts with the surface to form a chemical bond, providing long-term durability, alkali resistance and superior breathability.

Paver Kare® Paver Enhancer WB is a long-lasting, penetrating water repellent for enhancing the natural color of most clay, concrete and porous natural stone paving, new or old. This water-based blend of siloxane resins increases paver service-life by providing protection against weather- and water-borne staining and soiling. It also helps pavers resist damage from destructive de-icing salts. Paver Enhancer WB is ideal for interlocking concrete, clay and integrally colored concrete paving, indoors or out. It will not alter the natural texture of treated surfaces.

Stand Off® Color Enhancer brings out the color, warmth and richness of interior limestone, marble, granite and other unpolished natural stone surfaces. Treated surfaces not only look better but resist destructive water penetration and staining from a wide range of contaminants, including oil, grease, food and drink, and dirt. Color Enhancer is perfect for stone counters and tabletops, and stone and terrazzo floors. This penetrating protective treatment won’t trap moisture or create a surface sheen. Treated surfaces keep their natural texture.

Stand Off® Color Enhancer WB enhances the natural color and richness of porous natural stone, colored concrete and tile surfaces. Treated stone repels water and the dirt, salt and contaminants water carries. Surfaces look better, last longer, and are easier to clean. Color Enhancer WB is also effective for protecting and improving the appearance of concrete, clay and natural stone pavers, as well as integrally colored concrete paving, indoors or out. It won’t alter the natural texture of treated surfaces.

Test Method – Color and Sheen Enhancement

Paver Kare® Deep Sheen, Paver Kare® Deep Sheen WB, Paver Kare® Paver Enhancer, Paver Kare® Paver Enhancer WB, Stand Off® Color Enhancer, and Stand Off® Color Enhancer WB were applied by brush in accordance with the current PROSOCO, Inc. Product Data Sheet application instructions. After 24 hours, a visual evaluation was made comparing the untreated surface to the treated surface.

Test Results – Color and Sheen Enhancement Products Evaluated

“Cobblestone”; Granite		
Product	Color Enhancement	Sheen Enhancement
Untreated Control	--	--
Paver Kare® Deep Sheen	3	3
Paver Kare® Deep Sheen WB	1	1
Stand Off® Color Enhancer	3	0
Stand Off® Color Enhancer WB	2	0
“Belmont”; Limestone		
Product	Color Enhancement	Sheen Enhancement
Untreated Control	--	--
Paver Kare® Paver Enhancer	1	0
Paver Kare® Paver Enhancer WB	1	0
Paver Kare® Deep Sheen	3	1
Paver Kare® Deep Sheen WB	1	2
Stand Off® Color Enhancer	3	0
Stand Off® Color Enhancer WB	1	0
“Bradford”; Limestone		
Product	Color Enhancement	Sheen Enhancement
Untreated Control	--	--
Paver Kare® Paver Enhancer	2	0
Paver Kare® Paver Enhancer WB	2	0
Paver Kare® Deep Sheen	3	2
Paver Kare® Deep Sheen WB	2	3
Stand Off® Color Enhancer	2	0
Stand Off® Color Enhancer WB	2	0
“Carleton”; Limestone		
Product	Color Enhancement	Sheen Enhancement
Untreated Control	--	--
Paver Kare® Paver Enhancer	2	0
Paver Kare® Paver Enhancer WB	2	0
Paver Kare® Deep Sheen	2	3
Paver Kare® Deep Sheen WB	2	2
Stand Off® Color Enhancer	2	0
Stand Off® Color Enhancer WB	2	0

Scale:

- 0 – No Enhancement; Dull
 1 – Slight Enhancement
 2 – Moderate Enhancement
 3 – Significant Enhancement

Test Results – Color and Sheen Enhancement Products Evaluated

“Chandler”; Limestone		
Product	Color Enhancement	Sheen Enhancement
Untreated Control	--	--
Paver Kare® Paver Enhancer	2	0
Paver Kare® Paver Enhancer WB	2	0
Paver Kare® Deep Sheen	2	3
Paver Kare® Deep Sheen WB	2	2
Stand Off® Color Enhancer	3	0
Stand Off® Color Enhancer WB	2	0
“Chardonnay”; Limestone		
Product	Color Enhancement	Sheen Enhancement
Untreated Control	--	--
Paver Kare® Paver Enhancer	3	0
Paver Kare® Paver Enhancer WB	3	0
Paver Kare® Deep Sheen	3	3
Paver Kare® Deep Sheen WB	0	2
Stand Off® Color Enhancer	3	0
Stand Off® Color Enhancer WB	2	0
“Fairmont”; Limestone		
Product	Color Enhancement	Sheen Enhancement
Untreated Control	--	--
Paver Kare® Paver Enhancer	3	0
Paver Kare® Paver Enhancer WB	3	0
Paver Kare® Deep Sheen	3	3
Paver Kare® Deep Sheen WB	1	1
Stand Off® Color Enhancer	3	0
Stand Off® Color Enhancer WB	3	0

Scale:

- 0 – No Enhancement; Dull**
1 – Slight Enhancement
2 – Moderate Enhancement
3 – Significant Enhancement

Test Results – Color and Sheen Enhancement Products Evaluated

“Keywest”; Limestone		
Product	Color Enhancement	Sheen Enhancement
Untreated Control	--	--
Paver Kare® Paver Enhancer	3	0
Paver Kare® Paver Enhancer WB	3	0
Paver Kare® Deep Sheen	3	3
Paver Kare® Deep Sheen WB	3	3
Stand Off® Color Enhancer	3	0
Stand Off® Color Enhancer WB	3	0
“New Castle”; Limestone		
Product	Color Enhancement	Sheen Enhancement
Untreated Control	--	--
Paver Kare® Paver Enhancer	2	0
Paver Kare® Paver Enhancer WB	2	0
Paver Kare® Deep Sheen	2	3
Paver Kare® Deep Sheen WB	1	1
Stand Off® Color Enhancer	3	0
Stand Off® Color Enhancer WB	1	0
“Olympia”; Limestone		
Product	Color Enhancement	Sheen Enhancement
Untreated Control	--	--
Paver Kare® Paver Enhancer	1	0
Paver Kare® Paver Enhancer WB	1	0
Paver Kare® Deep Sheen	3	3
Paver Kare® Deep Sheen WB	1	3
Stand Off® Color Enhancer	2	0
Stand Off® Color Enhancer WB	1	0

Scale:

0 – No Enhancement; Dull
1 – Slight Enhancement
2 – Moderate Enhancement
3 – Significant Enhancement

Test Results – Color and Sheen Enhancement Products Evaluated

“Stockholm”; Limestone		
Product	Color Enhancement	Sheen Enhancement
Untreated Control	--	--
Paver Kare® Paver Enhancer	3	0
Paver Kare® Paver Enhancer WB	3	0
Paver Kare® Deep Sheen	3	3
Paver Kare® Deep Sheen WB	3	3
Stand Off® Color Enhancer	3	0
Stand Off® Color Enhancer WB	3	0
“Sutton”; Limestone		
Product	Color Enhancement	Sheen Enhancement
Untreated Control	--	--
Paver Kare® Paver Enhancer	2	0
Paver Kare® Paver Enhancer WB	2	0
Paver Kare® Deep Sheen	2	3
Paver Kare® Deep Sheen WB	0	1
Stand Off® Color Enhancer	3	0
Stand Off® Color Enhancer WB	2	0
“Kingston”; Travertine		
Product	Color Enhancement	Sheen Enhancement
Untreated Control	--	--
Paver Kare® Paver Enhancer	2	0
Paver Kare® Paver Enhancer WB	2	0
Paver Kare® Deep Sheen	3	2
Paver Kare® Deep Sheen WB	2	2
Stand Off® Color Enhancer	2	0
Stand Off® Color Enhancer WB	2	0

Scale:

- 0 – No Enhancement; Dull**
- 1 – Slight Enhancement**
- 2 – Moderate Enhancement**
- 3 – Significant Enhancement**

Test Results – Color and Sheen Enhancement Products Evaluated

“Windsor”; Travertine		
Product	Color Enhancement	Sheen Enhancement
Untreated Control	--	--
Paver Kare® Paver Enhancer	2	0
Paver Kare® Paver Enhancer WB	2	0
Paver Kare® Deep Sheen	2	3
Paver Kare® Deep Sheen WB	2	3
Stand Off® Color Enhancer	2	0
Stand Off® Color Enhancer WB	2	0
“Hudson LedgeStone”; Quartzite		
Product	Color Enhancement	Sheen Enhancement
Untreated Control	--	--
Paver Kare® Paver Enhancer	2	0
Paver Kare® Paver Enhancer WB	1	1
Paver Kare® Deep Sheen	3	3
Paver Kare® Deep Sheen WB	1	1
Stand Off® Color Enhancer	3	0
Stand Off® Color Enhancer WB	1	0
“Virginia LedgeStone”; Quartzite		
Product	Color Enhancement	Sheen Enhancement
Untreated Control	--	--
Paver Kare® Paver Enhancer	2	0
Paver Kare® Paver Enhancer WB	1	1
Paver Kare® Deep Sheen	3	3
Paver Kare® Deep Sheen WB	1	1
Stand Off® Color Enhancer	3	0
Stand Off® Color Enhancer WB	1	0

Scale:

- 0 – No Enhancement; Dull**
- 1 – Slight Enhancement**
- 2 – Moderate Enhancement**
- 3 – Significant Enhancement**

Test Results – Color and Sheen Enhancement Products Evaluated

“Canyon Creek”; Sandstone		
Product	Color Enhancement	Sheen Enhancement
Untreated Control	--	--
Paver Kare® Paver Enhancer	2	0
Paver Kare® Paver Enhancer WB	2	0
Paver Kare® Deep Sheen	3	3
Paver Kare® Deep Sheen WB	2	3
Stand Off® Color Enhancer	3	0
Stand Off® Color Enhancer WB	2	0
“New England Fieldstone”; Sandstone		
Product	Color Enhancement	Sheen Enhancement
Untreated Control	--	--
Paver Kare® Paver Enhancer	1	0
Paver Kare® Paver Enhancer WB	1	0
Paver Kare® Deep Sheen	3	3
Paver Kare® Deep Sheen WB	1	0
Stand Off® Color Enhancer	3	0
Stand Off® Color Enhancer WB	1	0
“Palmer”; Sandstone		
Product	Color Enhancement	Sheen Enhancement
Untreated Control	--	--
Paver Kare® Paver Enhancer	1	0
Paver Kare® Paver Enhancer WB	1	0
Paver Kare® Deep Sheen	2	3
Paver Kare® Deep Sheen WB	1	0
Stand Off® Color Enhancer	2	0
Stand Off® Color Enhancer WB	1	0

Scale:

- 0 – No Enhancement; Dull**
- 1 – Slight Enhancement**
- 2 – Moderate Enhancement**
- 3 – Significant Enhancement**

Test Results – Color and Sheen Enhancement Products Evaluated

“Santa Barbara”; Sandstone		
Product	Color Enhancement	Sheen Enhancement
Untreated Control	--	--
Paver Kare® Paver Enhancer	2	0
Paver Kare® Paver Enhancer WB	1	0
Paver Kare® Deep Sheen	3	1
Paver Kare® Deep Sheen WB	1	0
Stand Off® Color Enhancer	3	0
Stand Off® Color Enhancer WB	1	0

Scale:

- 0 – No Enhancement; Dull**
- 1 – Slight Enhancement**
- 2 – Moderate Enhancement**
- 3 – Significant Enhancement**

Photographs – Color and Sheen Enhancement

“Cobblestone”; Granite



Stand Off®
Color Enhancer

Paver Kare®
Deep Sheen

Untreated
Control



Stand Off®
Color Enhancer WB

Paver Kare®
Deep Sheen WB

Untreated
Control

Photographs – Color and Sheen Enhancement

“Olympia”; Limestone



Stand Off®
Color Enhancer



Paver Kare®
Deep Sheen



Paver Kare®
Paver Enhancer



Untreated
Control



Stand Off®
Color Enhancer WB



Paver Kare®
Deep Sheen WB



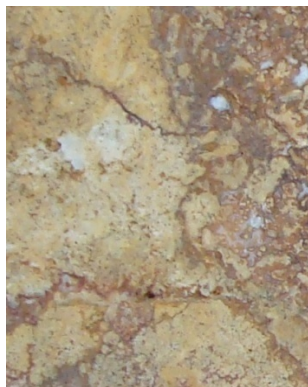
Paver Kare®
Paver Enhancer WB



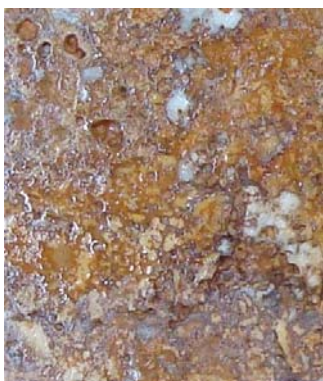
Untreated
Control

Photographs – Color and Sheen Enhancement

“Kingston”; Travertine



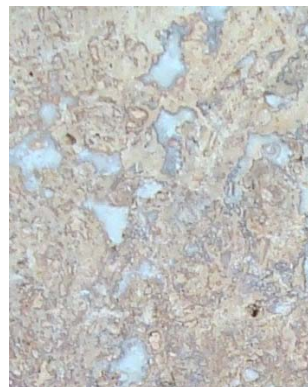
Stand Off®
Color Enhancer



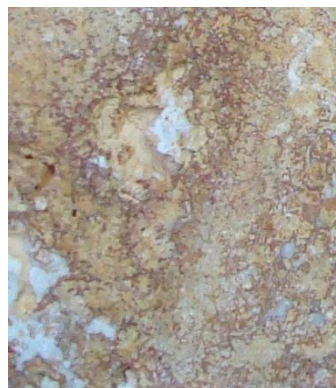
Paver Kare®
Deep Sheen



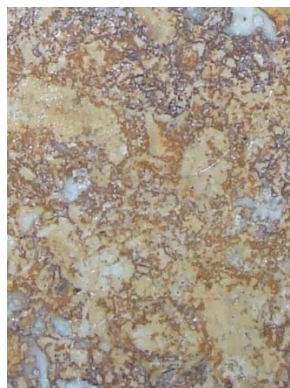
Paver Kare®
Paver Enhancer



Untreated
Control



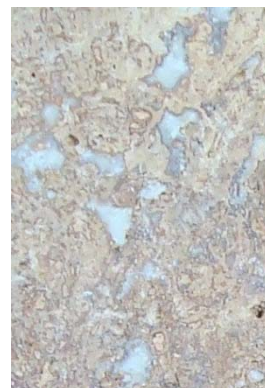
Stand Off®
Color Enhancer WB



Paver Kare®
Deep Sheen WB



Paver Kare®
Paver Enhancer WB



Untreated
Control

Photographs – Color and Sheen Enhancement

“Virginia LedgeStone”; Quartzite



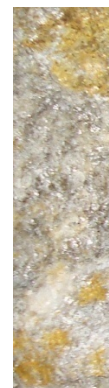
Stand Off®
Color Enhancer



Paver Kare®
Deep Sheen



Paver Kare®
Paver Enhancer



Untreated
Control



Stand Off®
Color Enhancer WB



Paver Kare®
Deep Sheen WB



Paver Kare®
Paver Enhancer WB



Untreated
Control

Photographs – Color and Sheen Enhancement

“Santa Barbara”; Sandstone



Stand Off®
Color Enhancer



Paver Kare®
Deep Sheen



Paver Kare®
Paver Enhancer



Untreated
Control



Stand Off®
Color Enhancer WB



Paver Kare®
Deep Sheen WB



Paver Kare®
Paver Enhancer WB



Untreated
Control

Recommendations – Color and Sheen Enhancement

Recommendations for color and sheen enhancement for the natural stone submitted by Natural Stone Veneers International Inc., Fond du Lac, WI are provided in the chart below. Recommendations are based on the treatment that proved most effective in providing color and/or sheen enhancement to the submitted samples.

Sample	Color Enhancement	Sheen Enhancement
"Cobblestone"	* Paver Kare® Deep Sheen or * Stand Off® Color Enhancer or Stand Off® Color Enhancer WB	* Paver Kare® Deep Sheen
"Belmont"	* Paver Kare® Deep Sheen or * Stand Off® Color Enhancer	Paver Kare® Deep Sheen WB
"Bradford" "Carleton" "Chandler" "Keywest" "Stockholm" "Kingston" "Windsor" "Canyon Creek"	* Paver Kare® Paver Enhancer or Paver Kare® Paver Enhancer WB or * Paver Kare® Deep Sheen or Paver Kare® Deep Sheen WB or * Stand Off® Color Enhancer or Stand Off® Color Enhancer WB	* Paver Kare® Deep Sheen or Paver Kare® Deep Sheen WB

*** NOTE:** Paver Kare® Paver Enhancer, Paver Kare® Deep Sheen, and Stand Off® Color Enhancer are manufactured and marketed in compliance with VOC regulations. These products may not be suitable for sale in states and districts with more restrictive regulations.

Apply all products in accordance with the manufacturer's recommendation provided on container labels and product data sheets. On-site testing should be conducted to determine the most appropriate product and procedures for a particular project. See product literature for additional application and product information.

Recommendations – Color and Sheen Enhancement

"Chardonnay"	* Paver Kare® Paver Enhancer or Paver Kare® Paver Enhancer WB or * Paver Kare® Deep Sheen or * Stand Off® Color Enhancer or Stand Off® Color Enhancer WB	* Paver Kare® Deep Sheen or Paver Kare® Deep Sheen WB
"Fairmont"	* Paver Kare® Paver Enhancer or Paver Kare® Paver Enhancer WB or * Paver Kare® Deep Sheen or * Stand Off® Color Enhancer or Stand Off® Color Enhancer WB	* Paver Kare® Deep Sheen
"New Castle"	* Paver Kare® Paver Enhancer or Paver Kare® Paver Enhancer WB or * Paver Kare® Deep Sheen or * Stand Off® Color Enhancer	* Paver Kare® Deep Sheen

*** NOTE:** Paver Kare® Paver Enhancer, Paver Kare® Deep Sheen, and Stand Off® Color Enhancer are manufactured and marketed in compliance with VOC regulations. These products may not be suitable for sale in states and districts with more restrictive regulations.

Apply all products in accordance with the manufacturer's recommendation provided on container labels and product data sheets. On-site testing should be conducted to determine the most appropriate product and procedures for a particular project. See product literature for additional application and product information.

Recommendations – Color and Sheen Enhancement

"Olympia"	* Paver Kare® Deep Sheen or * Stand Off® Color Enhancer	* Paver Kare® Deep Sheen or Paver Kare® Deep Sheen WB
"Sutton"	* Paver Kare® Paver Enhancer or Paver Kare® Paver Enhancer WB or * Paver Kare® Deep Sheen or * Stand Off® Color Enhancer or Stand Off® Color Enhancer WB	* Paver Kare® Deep Sheen
"Hudson Ledgerstone" "Virginia Ledgerstone" "Santa Barbara"	* Paver Kare® Paver Enhancer or * Paver Kare® Deep Sheen or * Stand Off® Color Enhancer	* Paver Kare® Deep Sheen
"New England Fieldstone" "Palmer"	* Paver Kare® Deep Sheen or * Stand Off® Color Enhancer	* Paver Kare® Deep Sheen

* **NOTE:** Paver Kare® Paver Enhancer, Paver Kare® Deep Sheen, and Stand Off® Color Enhancer are manufactured and marketed in compliance with VOC regulations. These products may not be suitable for sale in states and districts with more restrictive regulations.

Apply all products in accordance with the manufacturer's recommendation provided on container labels and product data sheets. On-site testing should be conducted to determine the most appropriate product and procedures for a particular project. See product literature for additional application and product information.

Graffiti Control

This evaluation compares the effectiveness of graffiti control treatments in preventing staining of enamel spray paint and permanent markers.

Description of Products Evaluated – Graffiti Control

Graffiti Control Treatments

Sure Klean® Weather Seal Blok-Guard® & Graffiti Control – A clear, solvent-based silicone elastomer formulated to weatherproof concrete block and other porous masonry materials. Blok-Guard® & Graffiti Control protects masonry surfaces from repeated graffiti attacks without altering the natural appearance. Blok-Guard® & Graffiti Control penetrates and fills pores to prevent water penetration through exterior walls exposed to normal weathering. Graffiti removal is fast and easy using Defacer Eraser® Graffiti Wipe. Blok-Guard® & Graffiti Control is easy to apply with low-pressure spray, brush or roller.

Sure Klean® Weather Seal Blok-Guard® & Graffiti Control II – A clear-drying, water-based silicone emulsion for weatherproofing concrete block and other porous masonry materials. Blok-Guard® & Graffiti Control II also protects masonry surfaces from graffiti attacks without altering the natural appearance. Blok-Guard® & Graffiti Control II protects exterior walls exposed to normal weathering. Graffiti removal from treated surfaces is fast and easy using Defacer Eraser® Graffiti Wipe. Blok-Guard® & Graffiti Control II is easy to apply with low-pressure spray, brush or roller.

Products Evaluated for Graffiti Removal

Enviro Klean® SafStrip® – quickly removes most paints, clear coats and graffiti from masonry, concrete, wood and metal – without use of methylene chloride or methanol. Low-odor SafStrip® breaks the bond of high-strength paints and coatings including acrylics, alkyds, and clear sealers. It dissolves common hard-to-remove graffiti media such as spray paints, marking pens and lacquers. Its “thixotropic” gel consistency makes SafStrip® easy to apply and spill-resistant. After cleaning, the spent paint stripper rinses off easily with cold or hot water.

Enviro Klean® SafStrip® 8 – A neutral-pH stripping compound for nearly any hard surface – masonry, concrete, wood or metal. It bears the Enviro Klean® brand because it removes most high-strength paints and clear coats without the methylene chloride or methanol found in traditional solvent paint strippers. Use SafStrip® 8 to break the bond of the toughest oil-based “alkyd” paints, acrylics, lacquers and clear sealers. It also removes graffiti media such as spray paint and “magic” marker. SafStrip® 8’s gel-like consistency makes it hard to spill and easy to apply. It immediately emulsifies in water.

Sure Klean® Fast Acting Stripper – A thixotropic stripping compound formulated specifically for removal of high strength paints and coatings such as epoxies, polyurethanes, and floor enamels. Additionally, Fast Acting Stripper dissolves most spray paints, marking pens, lacquers and other graffiti.

Defacer Eraser® Graffiti Wipe – An easy-to-use graffiti remover that does not contain methanol, methylene chloride or other halogenated solvents prohibited on many projects. Graffiti Wipe removes a variety of graffiti stains from most smooth masonry, split-face concrete block, wood and metal surfaces.

Graffiti Agents

Interior/Exterior Spray Paint (Red)
Permanent Marker (Blue)
Permanent Marker (Red)
Permanent Marker (Black)

Sample Preparation – Graffiti Control

Sections of the natural stone were treated with Sure Klean® Weather Seal Blok-Guard® & Graffiti Control and Sure Klean® Weather Seal Blok-Guard® & Graffiti Control II in accordance with the current PROSOCO, Inc. Product Data Sheet application instructions and allowed to cure for at least one day. At the end of the cure period, a visual adverse effects evaluation was made and then the graffiti agents were applied to the substrates.

Spray paint and markers were applied as graffiti agents to all treated surfaces no sooner than one day following application of Sure Klean® Weather Seal Blok-Guard® & Graffiti Control and Sure Klean® Weather Seal Blok-Guard® & Graffiti Control II. Removal of the graffiti agents was attempted 24 hours after application of the graffiti agents, using Enviro Klean® SafStrip®, Enviro Klean® SafStrip® 8, Defacer Eraser® Graffiti Wipe, and Sure Klean® Fast Acting Stripper.

Test Method – Graffiti Control

Chemical cleaners were evaluated using the following procedure:

1. Apply the product to a dry surface, soiled with graffiti.
2. Allow appropriate dwell time:

Enviro Klean® SafStrip®	30 minutes
Enviro Klean® SafStrip® 8	30 minutes
Sure Klean® Fast Acting Stripper	20 minutes
Defacer Eraser® Graffiti Wipe	5 minutes
3. Pressure rinse thoroughly until water runs clear.*
4. Allow the surface to dry thoroughly and visually examine to determine effectiveness.

***Pressure Rinsing Equipment** – Masonry washing equipment generating approximately 700-800 psi with a water flow rate of 8 gallons per minute delivered through a 45 degree fan spray tip was used for rinsing.

Test Results – Graffiti Control

“Cobblestone”; Granite					
Untreated Control	Red Paint	Black Marker	Blue Marker	Red Marker	% Avg. Removal
Enviro Klean® SafStrip®	40 %	60 %	40 %	50 %	48 %
Sure Klean® Fast Acting Stripper	90 %	50 %	40 %	50 %	58 %
Defacer Eraser® Graffiti Wipe	60 %	55 %	40 %	50 %	51 %
Sure Klean® Weather Seal Blok-Guard® & Graffiti Control	Red Paint	Black Marker	Blue Marker	Red Marker	% Avg. Removal
Enviro Klean® SafStrip®	85 %	90 %	90 %	95 %	90 %
Sure Klean® Fast Acting Stripper	95 %	95 %	95 %	95 %	95 %
Defacer Eraser® Graffiti Wipe	50 %	95 %	95 %	95 %	84 %
Sure Klean® Weather Seal Blok-Guard® & Graffiti Control II	Red Paint	Black Marker	Blue Marker	Red Marker	% Avg. Removal
Enviro Klean® SafStrip®	50 %	40 %	50 %	70 %	53 %
Sure Klean® Fast Acting Stripper	75 %	50 %	55 %	70 %	63 %
Defacer Eraser® Graffiti Wipe	40 %	55 %	55 %	50 %	50 %
“Belmont”; Limestone					
Untreated Control	Red Paint	Black Marker	Blue Marker	Red Marker	% Avg. Removal
Enviro Klean® SafStrip® 8	60 %	45 %	45 %	55 %	51 %
Sure Klean® Fast Acting Stripper	95 %	60 %	50 %	50 %	64 %
Defacer Eraser® Graffiti Wipe	60 %	40 %	40 %	40 %	45 %
Sure Klean® Weather Seal Blok-Guard® & Graffiti Control	Red Paint	Black Marker	Blue Marker	Red Marker	% Avg. Removal
Enviro Klean® SafStrip® 8	65 %	90 %	45 %	50 %	62 %
Sure Klean® Fast Acting Stripper	95 %	85 %	70 %	80 %	83 %
Defacer Eraser® Graffiti Wipe	65 %	50 %	45 %	45 %	51 %
Sure Klean® Weather Seal Blok-Guard® & Graffiti Control II	Red Paint	Black Marker	Blue Marker	Red Marker	% Avg. Removal
Enviro Klean® SafStrip® 8	65 %	45 %	40 %	60 %	53 %
Sure Klean® Fast Acting Stripper	90 %	85 %	45 %	80 %	75 %
Defacer Eraser® Graffiti Wipe	65 %	45 %	40 %	40 %	48 %

Test Results – Graffiti Control

“Bradford”; Limestone					
Untreated Control	Red Paint	Black Marker	Blue Marker	Red Marker	% Avg. Removal
Enviro Klean® SafStrip® 8	40 %	20 %	20 %	20 %	25 %
Sure Klean® Fast Acting Stripper	50 %	40 %	40 %	50 %	45 %
Defacer Eraser® Graffiti Wipe	20 %	20 %	20 %	50 %	28 %
Sure Klean® Weather Seal Blok-Guard® & Graffiti Control	Red Paint	Black Marker	Blue Marker	Red Marker	% Avg. Removal
Enviro Klean® SafStrip® 8	60 %	100 %	100 %	100 %	90 %
Sure Klean® Fast Acting Stripper	70 %	60 %	70 %	75 %	69 %
Defacer Eraser® Graffiti Wipe	60 %	40 %	40 %	40 %	45 %
Sure Klean® Weather Seal Blok-Guard® & Graffiti Control II	Red Paint	Black Marker	Blue Marker	Red Marker	% Avg. Removal
Enviro Klean® SafStrip® 8	60 %	20 %	20 %	20 %	30 %
Sure Klean® Fast Acting Stripper	50 %	40 %	20 %	20 %	33 %
Defacer Eraser® Graffiti Wipe	60 %	20 %	20 %	40 %	35 %
“Carleton”; Limestone					
Untreated Control	Red Paint	Black Marker	Blue Marker	Red Marker	% Avg. Removal
Enviro Klean® SafStrip® 8	60 %	20 %	20 %	20 %	30 %
Sure Klean® Fast Acting Stripper	90 %	30 %	30 %	40 %	48 %
Defacer Eraser® Graffiti Wipe	20 %	20 %	20 %	30 %	23 %
Sure Klean® Weather Seal Blok-Guard® & Graffiti Control	Red Paint	Black Marker	Blue Marker	Red Marker	% Avg. Removal
Enviro Klean® SafStrip® 8	100 %	80 %	80 %	80 %	85 %
Sure Klean® Fast Acting Stripper	100 %	95 %	95 %	90 %	95 %
Defacer Eraser® Graffiti Wipe	90 %	90 %	90 %	90 %	90 %
Sure Klean® Weather Seal Blok-Guard® & Graffiti Control II	Red Paint	Black Marker	Blue Marker	Red Marker	% Avg. Removal
Enviro Klean® SafStrip® 8	60 %	50 %	40 %	60 %	53 %
Sure Klean® Fast Acting Stripper	95 %	95 %	80 %	90 %	90 %
Defacer Eraser® Graffiti Wipe	80 %	40 %	40 %	50 %	53 %
“Chandler”; Limestone					
Untreated Control	Red Paint	Black Marker	Blue Marker	Red Marker	% Avg. Removal
Enviro Klean® SafStrip® 8	75 %	20 %	20 %	20 %	34 %
Sure Klean® Fast Acting Stripper	70 %	30 %	30 %	30 %	40 %
Defacer Eraser® Graffiti Wipe	80 %	20 %	20 %	20 %	35 %
Sure Klean® Weather Seal Blok-Guard® & Graffiti Control	Red Paint	Black Marker	Blue Marker	Red Marker	% Avg. Removal
Enviro Klean® SafStrip® 8	70 %	90 %	90 %	90 %	85 %
Sure Klean® Fast Acting Stripper	90 %	95 %	95 %	95 %	94 %
Defacer Eraser® Graffiti Wipe	85 %	85 %	85 %	85 %	85 %
Sure Klean® Weather Seal Blok-Guard® & Graffiti Control II	Red Paint	Black Marker	Blue Marker	Red Marker	% Avg. Removal
Enviro Klean® SafStrip® 8	60 %	50 %	50 %	50 %	53 %
Sure Klean® Fast Acting Stripper	50 %	20 %	30 %	50 %	38 %
Defacer Eraser® Graffiti Wipe	40 %	50 %	40 %	40 %	43 %

Test Results – Graffiti Control

“Chardonnay”; Limestone					
Untreated Control	Red Paint	Black Marker	Blue Marker	Red Marker	% Avg. Removal
Enviro Klean® SafStrip® 8	65 %	20 %	20 %	20 %	31 %
Sure Klean® Fast Acting Stripper	60 %	20 %	20 %	30 %	33 %
Defacer Eraser® Graffiti Wipe	60 %	20 %	20 %	30 %	33 %
Sure Klean® Weather Seal Blok-Guard® & Graffiti Control	Red Paint	Black Marker	Blue Marker	Red Marker	% Avg. Removal
Enviro Klean® SafStrip® 8	70 %	20 %	20 %	20 %	33 %
Sure Klean® Fast Acting Stripper	75 %	30 %	40 %	40 %	46 %
Defacer Eraser® Graffiti Wipe	70 %	20 %	20 %	20 %	33 %
Sure Klean® Weather Seal Blok-Guard® & Graffiti Control II	Red Paint	Black Marker	Blue Marker	Red Marker	% Avg. Removal
Enviro Klean® SafStrip® 8	60 %	20 %	20 %	20 %	30 %
Sure Klean® Fast Acting Stripper	65 %	20 %	40 %	40 %	41 %
Defacer Eraser® Graffiti Wipe	60 %	20 %	20 %	20 %	30 %
“Fairmont”; Limestone					
Untreated Control	Red Paint	Black Marker	Blue Marker	Red Marker	% Avg. Removal
Enviro Klean® SafStrip® 8	75 %	50 %	40 %	50 %	54 %
Sure Klean® Fast Acting Stripper	90 %	30 %	30 %	40 %	48 %
Defacer Eraser® Graffiti Wipe	55 %	40 %	40 %	40 %	44 %
Sure Klean® Weather Seal Blok-Guard® & Graffiti Control	Red Paint	Black Marker	Blue Marker	Red Marker	% Avg. Removal
Enviro Klean® SafStrip® 8	90 %	85 %	85 %	85 %	86 %
Sure Klean® Fast Acting Stripper	100 %	90 %	85 %	85 %	90 %
Defacer Eraser® Graffiti Wipe	70 %	85 %	85 %	85 %	81 %
Sure Klean® Weather Seal Blok-Guard® & Graffiti Control II	Red Paint	Black Marker	Blue Marker	Red Marker	% Avg. Removal
Enviro Klean® SafStrip® 8	60 %	70 %	70 %	75 %	69 %
Sure Klean® Fast Acting Stripper	85 %	90 %	90 %	90 %	89 %
Defacer Eraser® Graffiti Wipe	50 %	60 %	60 %	60 %	58 %
“Keywest”; Limestone					
Untreated Control	Red Paint	Black Marker	Blue Marker	Red Marker	% Avg. Removal
Enviro Klean® SafStrip® 8	95 %	100 %	85 %	85 %	91 %
Sure Klean® Fast Acting Stripper	95 %	100 %	90 %	90 %	94 %
Defacer Eraser® Graffiti Wipe	75 %	80 %	80 %	100 %	84 %
Sure Klean® Weather Seal Blok-Guard® & Graffiti Control	Red Paint	Black Marker	Blue Marker	Red Marker	% Avg. Removal
Enviro Klean® SafStrip® 8	85 %	100 %	100 %	100 %	96 %
Sure Klean® Fast Acting Stripper	90 %	100 %	100 %	100 %	98 %
Defacer Eraser® Graffiti Wipe	65 %	100 %	100 %	100 %	91 %
Sure Klean® Weather Seal Blok-Guard® & Graffiti Control II	Red Paint	Black Marker	Blue Marker	Red Marker	% Avg. Removal
Enviro Klean® SafStrip® 8	80 %	85 %	85 %	85 %	84 %
Sure Klean® Fast Acting Stripper	100 %	100 %	100 %	100 %	100 %
Defacer Eraser® Graffiti Wipe	65 %	80 %	80 %	80 %	76 %

Test Results – Graffiti Control

“New Castle”; Limestone					
Untreated Control	Red Paint	Black Marker	Blue Marker	Red Marker	% Avg. Removal
Enviro Klean® SafStrip® 8	65 %	20 %	20 %	20 %	31 %
Sure Klean® Fast Acting Stripper	75 %	40 %	20 %	40 %	44 %
Defacer Eraser® Graffiti Wipe	70 %	20 %	20 %	20 %	33 %
Sure Klean® Weather Seal Blok-Guard® & Graffiti Control	Red Paint	Black Marker	Blue Marker	Red Marker	% Avg. Removal
Enviro Klean® SafStrip® 8	80 %	100 %	100 %	100 %	95 %
Sure Klean® Fast Acting Stripper	80 %	85 %	95 %	90 %	88 %
Defacer Eraser® Graffiti Wipe	75 %	70 %	80 %	85 %	78 %
Sure Klean® Weather Seal Blok-Guard® & Graffiti Control II	Red Paint	Black Marker	Blue Marker	Red Marker	% Avg. Removal
Enviro Klean® SafStrip® 8	40 %	30 %	30 %	30 %	40 %
Sure Klean® Fast Acting Stripper	85 %	45 %	45 %	45 %	55 %
Defacer Eraser® Graffiti Wipe	50 %	30 %	30 %	30 %	35 %
“Olympia”; Limestone					
Untreated Control	Red Paint	Black Marker	Blue Marker	Red Marker	% Avg. Removal
Enviro Klean® SafStrip® 8	60 %	50 %	50 %	60 %	55 %
Sure Klean® Fast Acting Stripper	85 %	55 %	55 %	50 %	61 %
Defacer Eraser® Graffiti Wipe	50 %	50 %	50 %	50 %	50 %
Sure Klean® Weather Seal Blok-Guard® & Graffiti Control	Red Paint	Black Marker	Blue Marker	Red Marker	% Avg. Removal
Enviro Klean® SafStrip® 8	70 %	60 %	60 %	65 %	64 %
Sure Klean® Fast Acting Stripper	90 %	70 %	70 %	85 %	79 %
Defacer Eraser® Graffiti Wipe	70 %	60 %	70 %	70 %	68 %
Sure Klean® Weather Seal Blok-Guard® & Graffiti Control II	Red Paint	Black Marker	Blue Marker	Red Marker	% Avg. Removal
Enviro Klean® SafStrip® 8	50 %	40 %	40 %	45 %	45 %
Sure Klean® Fast Acting Stripper	70 %	40 %	40 %	50 %	50 %
Defacer Eraser® Graffiti Wipe	60 %	40 %	40 %	40 %	45 %
“Stockholm”; Limestone					
Untreated Control	Red Paint	Black Marker	Blue Marker	Red Marker	% Avg. Removal
Enviro Klean® SafStrip® 8	50 %	30 %	30 %	40 %	38 %
Sure Klean® Fast Acting Stripper	60 %	20 %	20 %	30 %	33 %
Defacer Eraser® Graffiti Wipe	55 %	20 %	20 %	20 %	29 %
Sure Klean® Weather Seal Blok-Guard® & Graffiti Control	Red Paint	Black Marker	Blue Marker	Red Marker	% Avg. Removal
Enviro Klean® SafStrip® 8	90 %	100 %	90 %	90 %	93 %
Sure Klean® Fast Acting Stripper	90 %	100 %	100 %	90 %	95 %
Defacer Eraser® Graffiti Wipe	90 %	100 %	90 %	90 %	93 %
Sure Klean® Weather Seal Blok-Guard® & Graffiti Control II	Red Paint	Black Marker	Blue Marker	Red Marker	% Avg. Removal
Sure Klean® Fast Acting Stripper	60 %	50 %	50 %	65 %	56 %
Enviro Klean® SafStrip® 8	70 %	50 %	50 %	70 %	60 %
Defacer Eraser® Graffiti Wipe	70 %	50 %	50 %	50 %	55 %

Test Results – Graffiti Control

“Sutton”; Limestone					
Untreated Control	Red Paint	Black Marker	Blue Marker	Red Marker	% Avg. Removal
Enviro Klean® SafStrip® 8	50 %	40 %	50 %	75 %	54 %
Sure Klean® Fast Acting Stripper	95 %	50 %	60 %	80 %	53 %
Defacer Eraser® Graffiti Wipe	40 %	65 %	65 %	65 %	59 %
Sure Klean® Weather Seal Blok-Guard® & Graffiti Control	Red Paint	Black Marker	Blue Marker	Red Marker	% Avg. Removal
Enviro Klean® SafStrip® 8	40 %	100 %	90 %	95 %	81 %
Sure Klean® Fast Acting Stripper	95 %	90 %	85 %	100 %	93 %
Defacer Eraser® Graffiti Wipe	40 %	100 %	85 %	95 %	80 %
Sure Klean® Weather Seal Blok-Guard® & Graffiti Control II	Red Paint	Black Marker	Blue Marker	Red Marker	% Avg. Removal
Enviro Klean® SafStrip® 8	50 %	60 %	60 %	90 %	65 %
Sure Klean® Fast Acting Stripper	90 %	65 %	65 %	95 %	79 %
Defacer Eraser® Graffiti Wipe	40 %	70 %	65 %	95 %	68 %
“Kingston”; Travertine					
Untreated Control	Red Paint	Black Marker	Blue Marker	Red Marker	% Avg. Removal
Enviro Klean® SafStrip® 8	95 %	90 %	50 %	85 %	80 %
Sure Klean® Fast Acting Stripper	95 %	90 %	50 %	85 %	80 %
Defacer Eraser® Graffiti Wipe	70 %	90 %	50 %	85 %	74 %
Sure Klean® Weather Seal Blok-Guard® & Graffiti Control	Red Paint	Black Marker	Blue Marker	Red Marker	% Avg. Removal
Enviro Klean® SafStrip® 8	70 %	85 %	85 %	85 %	81 %
Sure Klean® Fast Acting Stripper	100 %	90 %	85 %	90 %	91 %
Defacer Eraser® Graffiti Wipe	85 %	100 %	100 %	100 %	96 %
Sure Klean® Weather Seal Blok-Guard® & Graffiti Control II	Red Paint	Black Marker	Blue Marker	Red Marker	% Avg. Removal
Enviro Klean® SafStrip® 8	85 %	40 %	20 %	40 %	46 %
Sure Klean® Fast Acting Stripper	85 %	75 %	40 %	70 %	68 %
Defacer Eraser® Graffiti Wipe	65 %	70 %	40 %	40 %	54 %
“Windsor”; Travertine					
Untreated Control	Red Paint	Black Marker	Blue Marker	Red Marker	% Avg. Removal
Enviro Klean® SafStrip® 8	90 %	70 %	70 %	70 %	75 %
Sure Klean® Fast Acting Stripper	90 %	75 %	70 %	70 %	76 %
Defacer Eraser® Graffiti Wipe	85 %	70 %	70 %	70 %	74 %
Sure Klean® Weather Seal Blok-Guard® & Graffiti Control	Red Paint	Black Marker	Blue Marker	Red Marker	% Avg. Removal
Enviro Klean® SafStrip® 8	90 %	100 %	100 %	100 %	98 %
Sure Klean® Fast Acting Stripper	95 %	100 %	95 %	100 %	99 %
Defacer Eraser® Graffiti Wipe	90 %	100 %	100 %	100 %	98 %
Sure Klean® Weather Seal Blok-Guard® & Graffiti Control II	Red Paint	Black Marker	Blue Marker	Red Marker	% Avg. Removal
Sure Klean® Fast Acting Stripper	90 %	100 %	90 %	90 %	93 %
Enviro Klean® SafStrip® 8	85 %	90 %	85 %	90 %	88 %
Defacer Eraser® Graffiti Wipe	75 %	95 %	85 %	90 %	86 %

Test Results – Graffiti Control

“Hudson LedgeStone”; Quartzite					
Untreated Control	Red Paint	Black Marker	Blue Marker	Red Marker	% Avg. Removal
Enviro Klean® SafStrip®	60 %	70 %	70 %	80 %	70 %
Sure Klean® Fast Acting Stripper	70 %	70 %	75 %	85 %	75 %
Defacer Eraser® Graffiti Wipe	60 %	70 %	70 %	80 %	70 %
Sure Klean® Weather Seal Blok-Guard® & Graffiti Control	Red Paint	Black Marker	Blue Marker	Red Marker	% Avg. Removal
Enviro Klean® SafStrip®	85 %	100 %	100 %	100 %	96 %
Sure Klean® Fast Acting Stripper	95 %	100 %	100 %	100 %	99 %
Defacer Eraser® Graffiti Wipe	70 %	100 %	100 %	100 %	93 %
Sure Klean® Weather Seal Blok-Guard® & Graffiti Control II	Red Paint	Black Marker	Blue Marker	Red Marker	% Avg. Removal
Enviro Klean® SafStrip®	75 %	80 %	80 %	80 %	79 %
Sure Klean® Fast Acting Stripper	80 %	85 %	85 %	85 %	84 %
Defacer Eraser® Graffiti Wipe	80 %	85 %	85 %	80 %	80 %
“Virginia LedgeStone”; Quartzite					
Untreated Control	Red Paint	Black Marker	Blue Marker	Red Marker	% Avg. Removal
Enviro Klean® SafStrip®	85 %	75 %	75 %	85 %	80 %
Sure Klean® Fast Acting Stripper	70 %	70 %	70 %	75 %	71 %
Defacer Eraser® Graffiti Wipe	60 %	85 %	85 %	85 %	79 %
Sure Klean® Weather Seal Blok-Guard® & Graffiti Control	Red Paint	Black Marker	Blue Marker	Red Marker	% Avg. Removal
Enviro Klean® SafStrip®	85 %	100 %	100 %	100 %	96 %
Sure Klean® Fast Acting Stripper	100 %	100 %	100 %	100 %	100 %
Defacer Eraser® Graffiti Wipe	90 %	100 %	100 %	100 %	98 %
Sure Klean® Weather Seal Blok-Guard® & Graffiti Control II	Red Paint	Black Marker	Blue Marker	Red Marker	% Avg. Removal
Enviro Klean® SafStrip®	70 %	80 %	80 %	80 %	78 %
Sure Klean® Fast Acting Stripper	85 %	85 %	85 %	85 %	85 %
Defacer Eraser® Graffiti Wipe	85 %	85 %	85 %	85 %	85 %
“Canyon Creek”; Sandstone					
Untreated Control	Red Paint	Black Marker	Blue Marker	Red Marker	% Avg. Removal
Enviro Klean® SafStrip®	60 %	60 %	65 %	60 %	61 %
Sure Klean® Fast Acting Stripper	70 %	65 %	75 %	75 %	71 %
Defacer Eraser® Graffiti Wipe	40 %	50 %	60 %	60 %	53 %
Sure Klean® Weather Seal Blok-Guard® & Graffiti Control	Red Paint	Black Marker	Blue Marker	Red Marker	% Avg. Removal
Enviro Klean® SafStrip®	85 %	80 %	80 %	80 %	81 %
Sure Klean® Fast Acting Stripper	85 %	85 %	80 %	80 %	83 %
Defacer Eraser® Graffiti Wipe	50 %	65 %	65 %	65 %	61 %
Sure Klean® Weather Seal Blok-Guard® & Graffiti Control II	Red Paint	Black Marker	Blue Marker	Red Marker	% Avg. Removal
Enviro Klean® SafStrip®	50 %	55 %	50 %	60 %	54 %
Sure Klean® Fast Acting Stripper	50 %	40 %	50 %	60 %	50 %
Defacer Eraser® Graffiti Wipe	50 %	50 %	50 %	50 %	50 %

Test Results – Graffiti Control

“New England Fieldstone”; Sandstone					
Untreated Control	Red Paint	Black Marker	Blue Marker	Red Marker	% Avg. Removal
Enviro Klean® SafStrip®	40 %	90 %	75 %	60 %	66 %
Sure Klean® Fast Acting Stripper	90 %	90 %	85 %	90 %	89 %
Defacer Eraser® Graffiti Wipe	100 %	90 %	90 %	90 %	92 %
Sure Klean® Weather Seal Blok-Guard® & Graffiti Control	Red Paint	Black Marker	Blue Marker	Red Marker	% Avg. Removal
Enviro Klean® SafStrip®	60 %	85 %	85 %	90 %	80 %
Sure Klean® Fast Acting Stripper	85 %	100 %	100 %	100 %	96 %
Defacer Eraser® Graffiti Wipe	80 %	95 %	95 %	90 %	90 %
Sure Klean® Weather Seal Blok-Guard® & Graffiti Control II	Red Paint	Black Marker	Blue Marker	Red Marker	% Avg. Removal
Enviro Klean® SafStrip®	70 %	50 %	50 %	70 %	60 %
Sure Klean® Fast Acting Stripper	90 %	65 %	70 %	65 %	73 %
Defacer Eraser® Graffiti Wipe	85 %	50 %	55 %	65 %	64 %
“Palmer”; Sandstone					
Untreated Control	Red Paint	Black Marker	Blue Marker	Red Marker	% Avg. Removal
Enviro Klean® SafStrip®	40 %	90 %	70 %	90 %	73 %
Sure Klean® Fast Acting Stripper	95 %	100 %	85 %	95 %	94 %
Defacer Eraser® Graffiti Wipe	75 %	100 %	95 %	95 %	91 %
Sure Klean® Weather Seal Blok-Guard® & Graffiti Control	Red Paint	Black Marker	Blue Marker	Red Marker	% Avg. Removal
Enviro Klean® SafStrip®	70 %	100 %	95 %	95 %	90 %
Sure Klean® Fast Acting Stripper	95 %	100 %	100 %	100 %	99 %
Defacer Eraser® Graffiti Wipe	70 %	100 %	100 %	95 %	91 %
Sure Klean® Weather Seal Blok-Guard® & Graffiti Control II	Red Paint	Black Marker	Blue Marker	Red Marker	% Avg. Removal
Enviro Klean® SafStrip®	70 %	90 %	80 %	85 %	81 %
Sure Klean® Fast Acting Stripper	95 %	100 %	95 %	90 %	95 %
Defacer Eraser® Graffiti Wipe	80 %	95 %	95 %	95 %	91 %
“Santa Barbara”; Sandstone					
Untreated Control	Red Paint	Black Marker	Blue Marker	Red Marker	% Avg. Removal
Enviro Klean® SafStrip®	40 %	20 %	20 %	20 %	25 %
Sure Klean® Fast Acting Stripper	20 %	20 %	20 %	20 %	20 %
Defacer Eraser® Graffiti Wipe	40 %	20 %	20 %	20 %	25 %
Sure Klean® Weather Seal Blok-Guard® & Graffiti Control	Red Paint	Black Marker	Blue Marker	Red Marker	% Avg. Removal
Enviro Klean® SafStrip®	40 %	40 %	40 %	60 %	45 %
Sure Klean® Fast Acting Stripper	50 %	65 %	40 %	50 %	51 %
Defacer Eraser® Graffiti Wipe	35 %	60 %	40 %	65 %	50 %
Sure Klean® Weather Seal Blok-Guard® & Graffiti Control II	Red Paint	Black Marker	Blue Marker	Red Marker	% Avg. Removal
Enviro Klean® SafStrip®	35 %	40 %	40 %	40 %	39 %
Sure Klean® Fast Acting Stripper	40 %	40 %	40 %	40 %	40 %
Defacer Eraser® Graffiti Wipe	40 %	40 %	40 %	40 %	40 %

Photographs – Graffiti Control

“Palmer”; Sandstone

Untreated Control



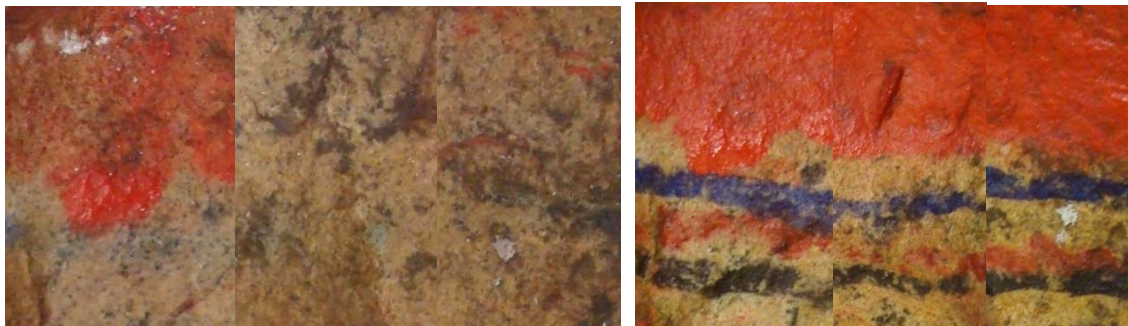
Enviro Klean [®] SafStrip [®]	Sure Klean [®] Fast Acting Stripper	Defacer Eraser [®] Graffiti Wipe	Before Graffiti Removal
--	--	---	-------------------------

Sure Klean[®] Weather Seal Blok-Guard[®] & Graffiti Control



Enviro Klean [®] SafStrip [®]	Sure Klean [®] Fast Acting Stripper	Defacer Eraser [®] Graffiti Wipe	Before Graffiti Removal
--	--	---	-------------------------

Sure Klean[®] Weather Seal Blok-Guard[®] & Graffiti Control II

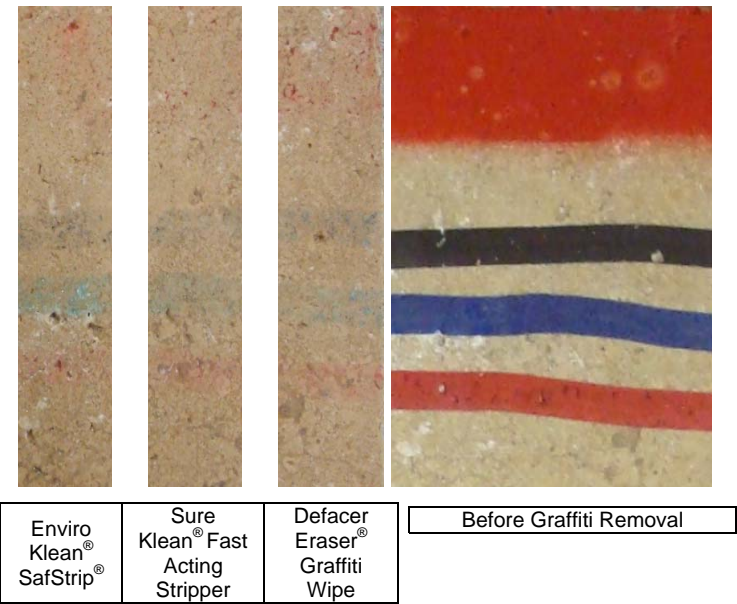


Enviro Klean [®] SafStrip [®]	Sure Klean [®] Fast Acting Stripper	Defacer Eraser [®] Graffiti Wipe	Before Graffiti Removal
--	---	--	-------------------------

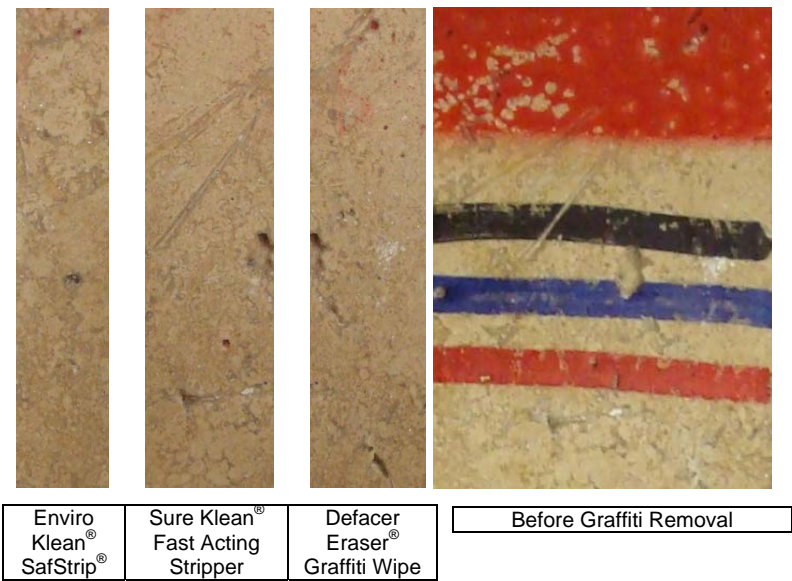
Photographs – Graffiti Control

“Windsor”; Travertine

Untreated Control



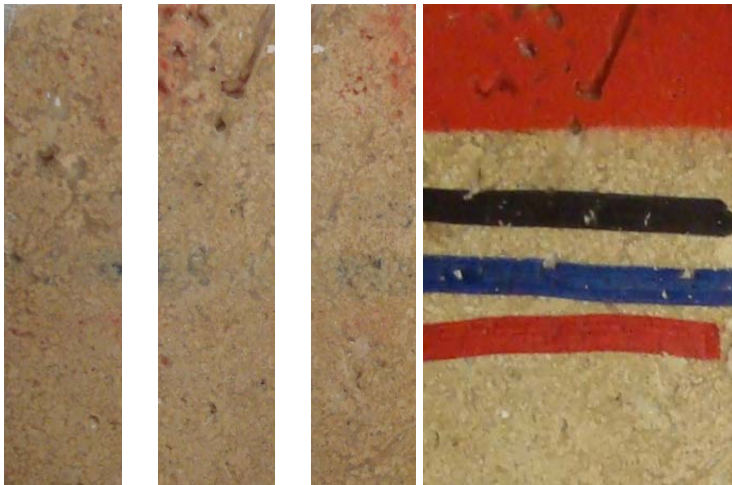
Sure Klean® Weather Seal Blok-Guard® & Graffiti Control



Photographs – Graffiti Control

“Windsor”; Travertine

Sure Klean® Weather Seal Blok-Guard® & Graffiti Control II







Enviro Klean® SafStrip®	Sure Klean® Fast Acting Stripper	Defacer Eraser® Graffiti Wipe	Before Graffiti Removal
-------------------------------	--	--	-------------------------




Photographs – Graffiti Control

“Fairmont; Limestone

Untreated Control

			
Enviro Klean® SafStrip®	Sure Klean® Fast Acting Stripper	Defacer Eraser® Graffiti Wipe	Before Graffiti Removal

Sure Klean® Weather Seal Blok-Guard® & Graffiti Control

			
Enviro Klean® SafStrip®	Sure Klean® Fast Acting Stripper	Defacer Eraser® Graffiti Wipe	Before Graffiti Removal

Photographs – Graffiti Control

“Fairmont; Limestone

Sure Klean® Weather Seal Blok-Guard® & Graffiti Control II



Enviro Klean® SafStrip®	Sure Klean® Fast Acting Stripper	Defacer Eraser® Graffiti Wipe	Before Graffiti Removal
-------------------------------	--	--	-------------------------

Conclusions – Graffiti Control

Based upon laboratory evaluations, graffiti removal was improved when the submitted samples were treated with Sure Klean® Weather Seal Blok-Guard® & Graffiti Control and/or Sure Klean® Weather Seal Blok-Guard® & Graffiti Control II prior to graffiti application. At least one graffiti remover was recommended for each natural stone sample.

Recommendations – Graffiti Control

Recommendations for graffiti control treatment for the natural stone submitted by Natural Stone Veneers International Inc., Fond du Lac, WI are provided in the chart below. Recommendations are based on the treatment that proved most effective for providing graffiti repellency and the product that was most effective at removing the graffiti on all types submitted.

Sample	Graffiti Repellents	Graffiti Removers
"Cobblestone"	* Sure Klean® Weather Seal Blok-Guard® & Graffiti Control	Enviro Klean® SafStrip® or Sure Klean® Fast Acting Stripper or Defacer Eraser® Graffiti Wipe
"Belmont"	* Sure Klean® Weather Seal Blok-Guard® & Graffiti Control or Sure Klean® Weather Seal Blok-Guard® & Graffiti Control II	Sure Klean® Fast Acting Stripper
"Bradford"	* Sure Klean® Weather Seal Blok-Guard® & Graffiti Control	Enviro Klean® SafStrip® 8
"Chandler" "Chardonnay" "New Castle" "Stockholm" "Kingston"	* Sure Klean® Weather Seal Blok-Guard® & Graffiti Control	Enviro Klean® SafStrip® 8 or Sure Klean® Fast Acting Stripper or Defacer Eraser® Graffiti Wipe

***NOTE:** Sure Klean® Weather Seal Blok-Guard® & Graffiti Control is manufactured and marketed in compliance with VOC regulations. This product may not be suitable for sale in states and districts with more restrictive regulations.

Apply all products in accordance with the manufacturer's recommendation provided on container labels and product data sheets. Because the severity of graffiti varies from location to location, on-site testing should be conducted to determine the most appropriate graffiti control product and procedure for a particular project

Recommendations – Graffiti Control

“Carleton” “Fairmont” “Sutton”	* Sure Klean® Weather Seal Blok-Guard® & Graffiti Control	Enviro Klean® SafStrip® 8 or Sure Klean® Fast Acting Stripper or Defacer Eraser® Graffiti Wipe
	Sure Klean® Weather Seal Blok-Guard® & Graffiti Control II	Sure Klean® Fast Acting Stripper
“Olympia”	* Sure Klean® Weather Seal Blok-Guard® & Graffiti Control	Sure Klean® Fast Acting Stripper
“Key West” “Windsor”	* Sure Klean® Weather Seal Blok-Guard® & Graffiti Control or Sure Klean® Weather Seal Blok-Guard® & Graffiti Control II	Enviro Klean® SafStrip® 8 or Sure Klean® Fast Acting Stripper or Defacer Eraser® Graffiti Wipe
“Hudson LedgeStone” “Virginia LedgeStone” “Palmer”	* Sure Klean® Weather Seal Blok-Guard® & Graffiti Control or Sure Klean® Weather Seal Blok-Guard® & Graffiti Control II	Enviro Klean® SafStrip® or Sure Klean® Fast Acting Stripper or Defacer Eraser® Graffiti Wipe

***NOTE:** Sure Klean® Weather Seal Blok-Guard® & Graffiti Control is manufactured and marketed in compliance with VOC regulations. This product may not be suitable for sale in states and districts with more restrictive regulations.

Apply all products in accordance with the manufacturer's recommendation provided on container labels and product data sheets. Because the severity of graffiti varies from location to location, on-site testing should be conducted to determine the most appropriate graffiti control product and procedure for a particular project

Recommendations – Graffiti Control

"Canyon Creek"	* Sure Klean® Weather Seal Blok-Guard® & Graffiti Control	Enviro Klean® SafStrip® or Sure Klean® Fast Acting Stripper
"New England Fieldstone"	* Sure Klean® Weather Seal Blok-Guard® & Graffiti Control	Enviro Klean® SafStrip® or Sure Klean® Fast Acting Stripper or Defacer Eraser® Graffiti Wipe
	Sure Klean® Weather Seal Blok-Guard® & Graffiti Control II	Sure Klean® Fast Acting Stripper
"Santa Barbara"	* Sure Klean® Weather Seal Blok-Guard® & Graffiti Control	Sure Klean® Fast Acting Stripper or Defacer Eraser® Graffiti Wipe

*** NOTE:** Sure Klean® Weather Seal Blok-Guard® & Graffiti Control is manufactured and marketed in compliance with VOC regulations. This product may not be suitable for sale in states and districts with more restrictive regulations.

Apply all products in accordance with the manufacturer's recommendation provided on container labels and product data sheets. Because the severity of graffiti varies from location to location, on-site testing should be conducted to determine the most appropriate graffiti control product and procedure for a particular project



Alia Bober
Project Testing Laboratory Technician



Natural Stone Veneers International Inc.
P.O. Box 347
Fond du Lac, WI 54936



Project No. 0809-07 PTP

Prepared For:
PROSOCO
SINCE 1939

Prepared By:
AMT Laboratories
February 2009