

Table of Contents

| | |
|---|-----------|
| Executive Summary | i |
| Submitted Information | 1 |
| Introduction | 1 |
| Purpose of Testing | 2 |
| Products Evaluated | 3 |
| New Construction Cleaning | 4 |
| Description of Products Evaluated – New Construction Cleaning | 4 |
| Sample Preparation – New Construction Cleaning | 4 |
| Test Method – New Construction Cleaning | 4 |
| Test Results – New Construction Cleaning | 5 |
| Test Results – New Construction Cleaning | 6 |
| Test Results – Color Uniformity | 7 |
| Photographs – New Construction Cleaning | 9 |
| Photographs – New Construction Cleaning | 10 |
| Photographs – New Construction Cleaning | 11 |
| Photographs – New Construction Cleaning | 12 |
| Photographs – New Construction Cleaning | 13 |
| Photographs – New Construction Cleaning | 14 |
| Photographs – Color Uniformity | 15 |
| Photographs – Color Uniformity | 16 |
| Conclusions – New Construction Cleaning | 17 |
| Recommendations – New Construction Cleaning | 17 |
| Protective Water Repellents | 18 |
| Description of Products Evaluated – Protective Water Repellents | 18 |
| Sample Preparation – Protective Water Repellents | 18 |
| Test Methods – Protective Water Repellents | 18 |
| Test Results – Protective Water Repellents | 19 |
| Test Results – Protective Water Repellents | 20 |
| Photographs – Protective Water Repellents | 21 |
| Conclusions – Protective Water Repellents | 21 |
| Recommendations – Protective Water Repellents | 22 |
| Graffiti Control | 23 |
| Description of Products Evaluated – Graffiti Control | 23 |
| Sample Preparation – Graffiti Control | 23 |
| Test Method – Graffiti Control | 24 |
| Test Results – Graffiti Control | 24 |
| Photographs – Graffiti Control | 28 |
| Photographs – Graffiti Control | 29 |
| Conclusions – Graffiti Control | 30 |
| Recommendations – Graffiti Control | 30 |
| Recommendations – Graffiti Control | 31 |
| Attachments | |
| Technical Services TECH Note RILEM Tube Test Procedures | |
| Product Data literature for all products evaluated | |

Submitted Information

For: Tom Lane
cc: Brian Koenings

Subject: Santerra Stonecraft
Windsor, Ontario

Date: October 28, 2008

Project: 0809-06 PTP

Samples Submitted: 10 types of Split-face CMU's

| Name | Color | Type | Size |
|---------------------|---------------------|----------------|-------------------|
| "Auburn Blend" | Dark Buff/ Gray | Split-face CMU | 15" x 7 ½" x 3 ¾" |
| "Auburn Red SR2" | Red/ Gray | Split-face CMU | 15" x 7 ½" x 5" |
| "Cedar" | Dark Buff | Split-face CMU | 15" x 7 ½" x 7 ½" |
| "Charcoal" | Dark Gray | Split-face CMU | 15" x 7 ½" x 7 ½" |
| "Diamond White SR2" | White | Split-face CMU | 15" x 7 ½" x 7 ½" |
| "Natural" | Light Gray | Split-face CMU | 15" x 7 ½" x 5" |
| "Red SR2" | Red | Split-face CMU | 15" x 7 ½" x 7 ½" |
| "Red Ash" | Dark Red/ Dark Gray | Split-face CMU | 15" x 7 ½" x 5" |
| "Salmon" | Light Red | Split-face CMU | 15" x 7 ½" x 5" |
| "Tan" | Buff | Split-face CMU | 15" x 7 ½" x 3 ¾" |

Submitted by: Tom Lane

Introduction

Architectural Materials Testing (AMT) Laboratories is a Boyer Industries company that provides laboratory testing and consulting services for the construction industry. Laboratory testing includes evaluating chemical cleaning products and protective treatments for a variety of new and existing architectural materials.

This report includes descriptions of the PROSOCO, Inc. products and test methods that were used. Following test results and conclusions, the report provides recommendations for the most effective products and procedures.

Purpose of Testing

Ten types of integrally colored split-face CMU's, all with large, small and fine aggregate were submitted for testing to AMT Laboratories by PROSOCO, Inc. to determine the optimum cleaning/cure time combination for complete removal of mortar and related new construction soiling. The effectiveness of protective water repellents and graffiti control products suitable for CMU's were also evaluated.

New Construction Cleaning – Sure Klean® Custom Masonry Cleaner was evaluated to determine the optimal concentration of cleaner for removal of laboratory applied mortar which also leaves the external surface looking most like the natural through-body color of the CMU.

To simulate new construction soiling all samples were placed on a bench with finished surface facing upward. Hollow cylinders measuring 50 mm in diameter and 75 mm tall were positioned on top of each sample and filled with a wet mixture of Type S mortar. The wet, mortar-filled cylinder was allowed to remain in contact with the samples for 10 minutes before removal.

Heavy deposits of mortar were removed with dry scraping after 24 hours. Prepared cleaning solutions were then evaluated for their effectiveness in removing residual Type S mortar staining after 3 days, 7 days, and 14 days of curing.

Color uniformity was evaluated by comparing aggregate exposure and surface pigment alteration/removal of each cleaned surface compared to the natural through-body color of the CMU.

Aggregate Exposure is the visual examination comparing aggregate exposure of the interior, through-body section of the CMU to surfaces cleaned with selected product(s) at given dilutions.

Surface Pigment Alteration/Removal is the visual examination comparing the pigmentation of the interior, through-body section of the CMU to surfaces cleaned with selected product(s) at given dilutions.

The following is the scale used for reporting results of both categories:

- | | |
|--|---------------------------------------|
| 0 – Worst match to through-body | 3 – Good match to through-body |
| 1 – Poor match to through-body | 4 – Best match to through-body |
| 2 – Fair match to through-body | |

NOTE: When cleaning integrally colored CMU's.

Integrally colored concrete masonry units (CMU's) frequently have high amounts of pigments concentrated on the surface of the cured concrete unit. Variation of surface pigment concentrations from one CMU to the next creates a blotchy appearance in the completed wall. Allowed to remain on the surface of the CMU, the weakly bound pigment will weather and streak, further detracting from the appearance of the completed CMU wall.

In addition to removing excess mortar and construction related soiling, the goal of any cleaning operation undertaken on an integrally colored CMU should include removal of unnaturally high concentrations of surface pigment. By revealing the natural through-body color on the integrally colored unit, the overall color uniformity and weathering resistance of the completed CMU wall is improved.

Protective Water Repellents – Sure Klean® Weather Seal Blok-Guard® & Graffiti Control II, Sure Klean® Weather Seal Blok-Guard® & Graffiti Control and Sure Klean® Weather Seal Siloxane WB Concentrate were evaluated for their ability to provide water repellency to the submitted samples.

Graffiti Control – Sure Klean® Weather Seal Blok-Guard® & Graffiti Control and Sure Klean® Weather Seal Blok-Guard® & Graffiti Control II were evaluated for their ability to control graffiti on the submitted samples. Sure Klean® Fast Acting Stripper, Defacer Eraser® Graffiti Wipe, and Enviro Klean® SafStrip® 8 were evaluated for their ability to remove graffiti from the submitted samples.

Products Evaluated**New Construction Cleaning Products Evaluated**

| Sample | Product | Dilution |
|---------------------|------------------------------------|---------------|
| All Submitted CMU's | Sure Klean® Custom Masonry Cleaner | 1:2, 1:4, 1:6 |

Protective Water Repellent Products Evaluated

| Sample | Product | Dilution |
|---------------------|--|-------------|
| All Submitted CMU's | Sure Klean® Weather Seal Blok-Guard® & Graffiti Control II | Concentrate |
| | Sure Klean® Weather Seal Blok-Guard® & Graffiti Control | Concentrate |
| | Sure Klean® Weather Seal Siloxane WB Concentrate | 1:9 |

Graffiti Control Products Evaluated

| Sample | Product | Dilution |
|---------------------|--|-------------|
| All Submitted CMU's | Sure Klean® Weather Seal Blok-Guard® & Graffiti Control | Concentrate |
| | Sure Klean® Weather Seal Blok-Guard® & Graffiti Control II | Concentrate |

Graffiti Removal Products Evaluated

| Sample | Product | Dilution |
|---------------------|----------------------------------|-------------|
| All Submitted CMU's | Sure Klean® Fast Acting Stripper | Concentrate |
| | Defacer Eraser® Graffiti Wipe | Concentrate |
| | Enviro Klean® SafStrip® 8 | Concentrate |

New Construction Cleaning

These cleaning trials were conducted to determine the optimal cleaning/cure time combination to most efficiently remove Type S mortar from the submitted samples while providing the best color uniformity when compared to the through-body color of the submitted CMU's.

Description of Products Evaluated – New Construction Cleaning

Sure Klean® Custom Masonry Cleaner – A general purpose, concentrated acidic cleaner for most custom masonry and colored concrete. Removes concrete splashes, excess mortar, mud, heavy efflorescence and surface soiling, leaving the masonry clean and uniform with no acid burning or streaking. Liquid concentrate for dilution with 2-6 parts water. Apply by brush or low-pressure spray.

Sample Preparation – New Construction Cleaning

Type S mortar was prepared in compliance with the manufacturer's instructions, applied to the samples and allowed to cure for 3, 7, and 14 days. Mortar removal was accomplished using chemical assistance and a high-pressure water rinse with pressure rinsing equipment. The removal of Type S masonry mortar was visually evaluated after 3, 7, and 14 days of curing. A visual examination was also made to determine the optimal dilution of the tested cleaners that provides the best color uniformity when compared to the through-body color of the CMU's.

Test Method – New Construction Cleaning

Chemical cleaners were evaluated using the following procedure:

1. Pre-wet the surface with water.
2. Apply at the appropriate dilutions.
3. Allow appropriate dwell time, as specified.
Sure Klean® Custom Masonry Cleaner.....3 minutes
4. Reapply the product and moderately agitate with a brush.
5. Pressure rinse thoroughly.*
6. Allow the sample to dry for at least 18 hours and visually examine.
7. Break the sample in half and compare the through-body surfaces to the cleaned surfaces for the best match.

***Pressure Rinsing Equipment** – Masonry washing equipment generating approximately 700-800 psi with a water flow rate of 8 gallons per minute delivered through a 45 degree fan spray tip was used for rinsing.

Test Results – New Construction Cleaning**Cleaning Effectiveness (% Type S Mortar Removal)**

| “Auburn Blend” | | | | |
|------------------------------------|----------|-------|-------|--------|
| Product | Dilution | 3 day | 7 day | 14 day |
| Sure Klean® Custom Masonry Cleaner | 1:2 | 100 % | 100 % | 100 % |
| Sure Klean® Custom Masonry Cleaner | 1:4 | 100 % | 100 % | 100 % |
| Sure Klean® Custom Masonry Cleaner | 1:6 | 100 % | 100 % | 100 % |
| “Auburn Red SR2” | | | | |
| Product | Dilution | 3 day | 7 day | 14 day |
| Sure Klean® Custom Masonry Cleaner | 1:2 | 100 % | 100 % | 100 % |
| Sure Klean® Custom Masonry Cleaner | 1:4 | 100 % | 100 % | 100 % |
| Sure Klean® Custom Masonry Cleaner | 1:6 | 100 % | 100 % | 100 % |
| “Cedar” | | | | |
| Product | Dilution | 3 day | 7 day | 14 day |
| Sure Klean® Custom Masonry Cleaner | 1:2 | 100 % | 100 % | 100 % |
| Sure Klean® Custom Masonry Cleaner | 1:4 | 100 % | 100 % | 100 % |
| Sure Klean® Custom Masonry Cleaner | 1:6 | 100 % | 100 % | 100 % |
| “Charcoal” | | | | |
| Product | Dilution | 3 day | 7 day | 14 day |
| Sure Klean® Custom Masonry Cleaner | 1:2 | 100 % | 100 % | 100 % |
| Sure Klean® Custom Masonry Cleaner | 1:4 | 100 % | 100 % | 100 % |
| Sure Klean® Custom Masonry Cleaner | 1:6 | 100 % | 100 % | 100 % |
| “Diamond White SR2” | | | | |
| Product | Dilution | 3 day | 7 day | 14 day |
| Sure Klean® Custom Masonry Cleaner | 1:2 | 100 % | 100 % | 100 % |
| Sure Klean® Custom Masonry Cleaner | 1:4 | 100 % | 100 % | 100 % |
| Sure Klean® Custom Masonry Cleaner | 1:6 | 100 % | 100 % | 100 % |

Test Results – New Construction Cleaning**Cleaning Effectiveness (% Type S Mortar Removal)**

| “Natural” | | | | |
|------------------------------------|----------|-------|-------|--------|
| Product | Dilution | 3 day | 7 day | 14 day |
| Sure Klean® Custom Masonry Cleaner | 1:2 | 100 % | 100 % | 100 % |
| Sure Klean® Custom Masonry Cleaner | 1:4 | 100 % | 100 % | 100 % |
| Sure Klean® Custom Masonry Cleaner | 1:6 | 100 % | 100 % | 100 % |
| “Red SR2” | | | | |
| Product | Dilution | 3 day | 7 day | 14 day |
| Sure Klean® Custom Masonry Cleaner | 1:2 | 100 % | 100 % | 100 % |
| Sure Klean® Custom Masonry Cleaner | 1:4 | 100 % | 100 % | 100 % |
| Sure Klean® Custom Masonry Cleaner | 1:6 | 100 % | 100 % | 100 % |
| “Red Ash” | | | | |
| Product | Dilution | 3 day | 7 day | 14 day |
| Sure Klean® Custom Masonry Cleaner | 1:2 | 100 % | 100 % | 100 % |
| Sure Klean® Custom Masonry Cleaner | 1:4 | 100 % | 100 % | 100 % |
| Sure Klean® Custom Masonry Cleaner | 1:6 | 100 % | 100 % | 100 % |
| “Salmon” | | | | |
| Product | Dilution | 3 day | 7 day | 14 day |
| Sure Klean® Custom Masonry Cleaner | 1:2 | 100 % | 100 % | 100 % |
| Sure Klean® Custom Masonry Cleaner | 1:4 | 100 % | 100 % | 100 % |
| Sure Klean® Custom Masonry Cleaner | 1:6 | 100 % | 100 % | 100 % |
| “Tan” | | | | |
| Product | Dilution | 3 day | 7 day | 14 day |
| Sure Klean® Custom Masonry Cleaner | 1:2 | 100 % | 100 % | 100 % |
| Sure Klean® Custom Masonry Cleaner | 1:4 | 100 % | 100 % | 100 % |
| Sure Klean® Custom Masonry Cleaner | 1:6 | 100 % | 100 % | 100 % |

Test Results – Color Uniformity

| “Auburn Blend” | | | |
|------------------------------------|----------|--------------------|------------------------------------|
| Product | Dilution | Aggregate Exposure | Surface Pigment Alteration/Removal |
| Sure Klean® Custom Masonry Cleaner | 1:2 | 3 | 3 |
| Sure Klean® Custom Masonry Cleaner | 1:4 | 3 | 3 |
| Sure Klean® Custom Masonry Cleaner | 1:6 | 4 | 4 |
| “Auburn Red SR2” | | | |
| Product | Dilution | Aggregate Exposure | Surface Pigment Alteration/Removal |
| Sure Klean® Custom Masonry Cleaner | 1:2 | 2 | 3 |
| Sure Klean® Custom Masonry Cleaner | 1:4 | 2 | 3 |
| Sure Klean® Custom Masonry Cleaner | 1:6 | 3 | 3 |
| “Cedar” | | | |
| Product | Dilution | Aggregate Exposure | Surface Pigment Alteration/Removal |
| Sure Klean® Custom Masonry Cleaner | 1:2 | 1 | 3 |
| Sure Klean® Custom Masonry Cleaner | 1:4 | 2 | 3 |
| Sure Klean® Custom Masonry Cleaner | 1:6 | 3 | 3 |
| “Charcoal” | | | |
| Product | Dilution | Aggregate Exposure | Surface Pigment Alteration/Removal |
| Sure Klean® Custom Masonry Cleaner | 1:2 | 0 | 0 |
| Sure Klean® Custom Masonry Cleaner | 1:4 | 1 | 1 |
| Sure Klean® Custom Masonry Cleaner | 1:6 | 1 | 1 |
| “Diamond White SR2” | | | |
| Product | Dilution | Aggregate Exposure | Surface Pigment Alteration/Removal |
| Sure Klean® Custom Masonry Cleaner | 1:2 | 2 | 3 |
| Sure Klean® Custom Masonry Cleaner | 1:4 | 2 | 3 |
| Sure Klean® Custom Masonry Cleaner | 1:6 | 4 | 4 |

Scale used for reporting results of both categories

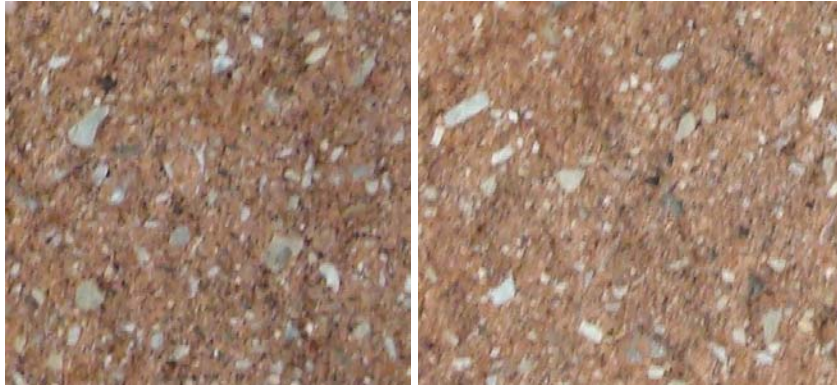
- 0 – **Worst** match to through-body 3 – **Good** match to through-body
 1 – **Poor** match to through-body 4 – **Best** match to through-body
 2 – **Fair** match to through-body

Test Results – Color Uniformity

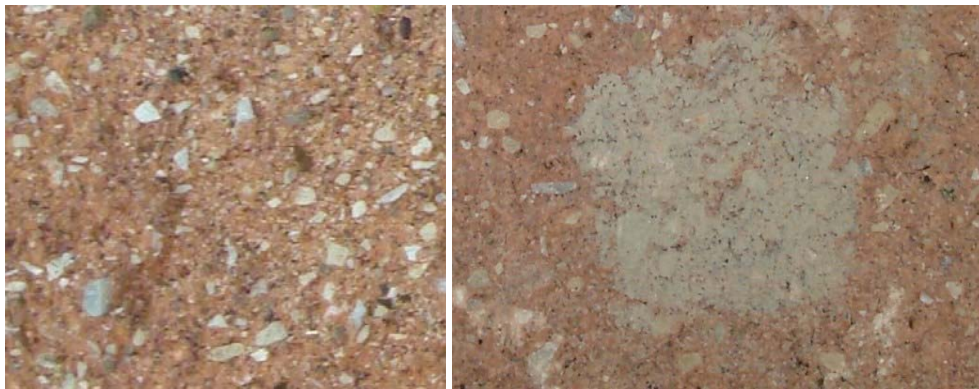
| “Natural” | | | |
|------------------------------------|----------|--------------------|------------------------------------|
| Product | Dilution | Aggregate Exposure | Surface Pigment Alteration/Removal |
| Sure Klean® Custom Masonry Cleaner | 1:2 | 1 | 1 |
| Sure Klean® Custom Masonry Cleaner | 1:4 | 1 | 2 |
| Sure Klean® Custom Masonry Cleaner | 1:6 | 1 | 2 |
| “Red SR2” | | | |
| Product | Dilution | Aggregate Exposure | Surface Pigment Alteration/Removal |
| Sure Klean® Custom Masonry Cleaner | 1:2 | 0 | 1 |
| Sure Klean® Custom Masonry Cleaner | 1:4 | 3 | 2 |
| Sure Klean® Custom Masonry Cleaner | 1:6 | 2 | 3 |
| “Red Ash” | | | |
| Product | Dilution | Aggregate Exposure | Surface Pigment Alteration/Removal |
| Sure Klean® Custom Masonry Cleaner | 1:2 | 0 | 1 |
| Sure Klean® Custom Masonry Cleaner | 1:4 | 1 | 2 |
| Sure Klean® Custom Masonry Cleaner | 1:6 | 1 | 2 |
| “Salmon” | | | |
| Product | Dilution | Aggregate Exposure | Surface Pigment Alteration/Removal |
| Sure Klean® Custom Masonry Cleaner | 1:2 | 2 | 2 |
| Sure Klean® Custom Masonry Cleaner | 1:4 | 3 | 3 |
| Sure Klean® Custom Masonry Cleaner | 1:6 | 3 | 3 |
| “Tan” | | | |
| Product | Dilution | Aggregate Exposure | Surface Pigment Alteration/Removal |
| Sure Klean® Custom Masonry Cleaner | 1:2 | 1 | 1 |
| Sure Klean® Custom Masonry Cleaner | 1:4 | 2 | 2 |
| Sure Klean® Custom Masonry Cleaner | 1:6 | 3 | 3 |

Scale used for reporting results of both categories

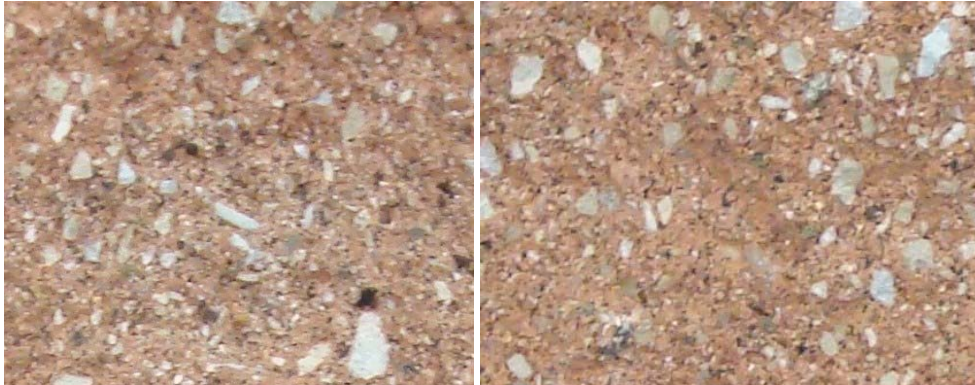
- 0 – **Worst** match to through-body 3 – **Good** match to through-body
 1 – **Poor** match to through-body 4 – **Best** match to through-body
 2 – **Fair** match to through-body

Photographs – New Construction Cleaning**“Salmon”; Type S Mortar
3 Day Cleaning**

| | |
|--|--|
| Sure Klean® Custom Masonry Cleaner (1:2) | Sure Klean® Custom Masonry Cleaner (1:4) |
|--|--|

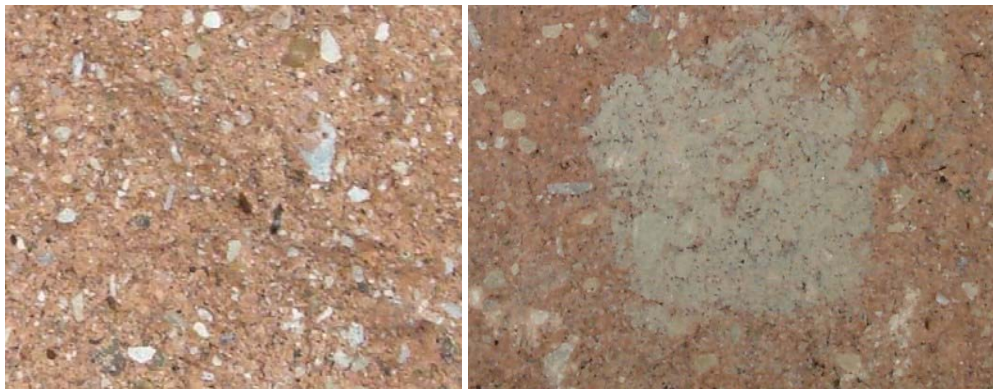


| | |
|--|-------------------|
| Sure Klean® Custom Masonry Cleaner (1:6) | Uncleaned Surface |
|--|-------------------|

Photographs – New Construction Cleaning**“Salmon”; Type S Mortar
7 Day Cleaning**

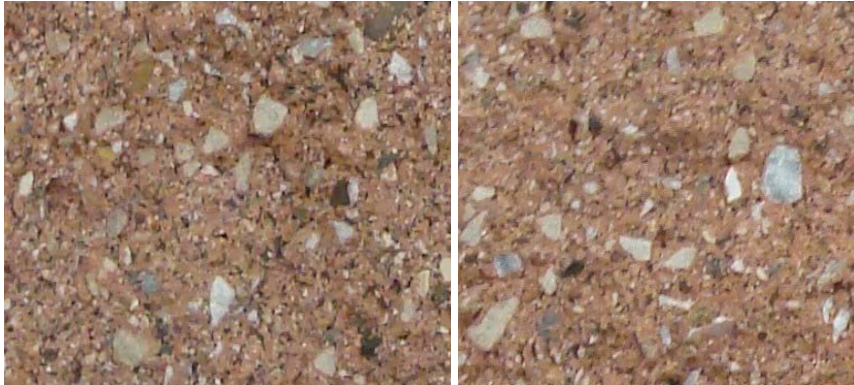
Sure Klean®
Custom Masonry Cleaner
(1:2)

Sure Klean®
Custom Masonry Cleaner
(1:4)



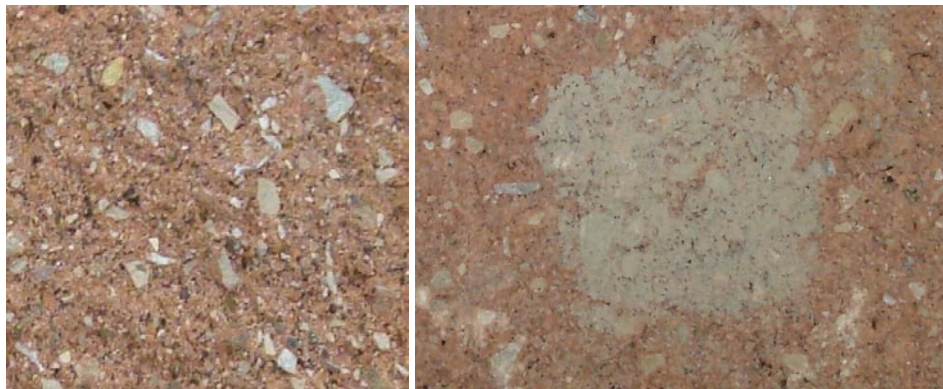
Sure Klean®
Custom Masonry Cleaner
(1:6)

Uncleaned Surface

Photographs – New Construction Cleaning**“Salmon”; Type S Mortar
14 Day Cleaning**

| |
|--|
| Sure Klean® Custom Masonry Cleaner (1:2) |
|--|

| |
|--|
| Sure Klean® Custom Masonry Cleaner (1:4) |
|--|



| |
|--|
| Sure Klean® Custom Masonry Cleaner (1:6) |
|--|

| |
|-------------------|
| Uncleaned Surface |
|-------------------|

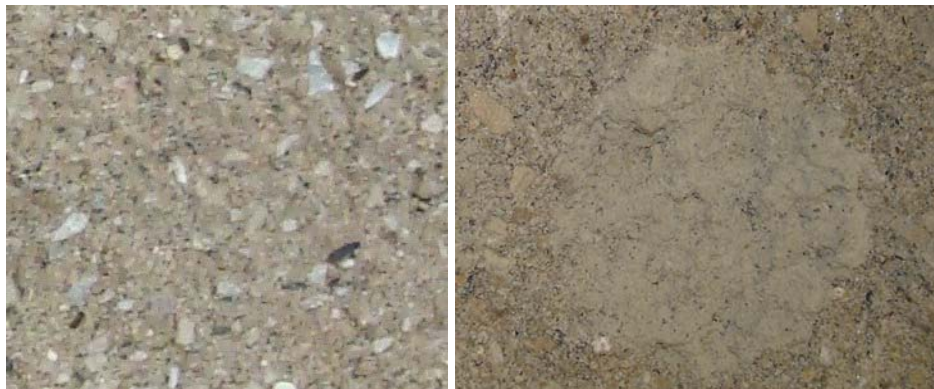
Photographs – New Construction Cleaning

**“Cedar”; Type S Mortar
3 Day Cleaning**



Sure Klean®
Custom Masonry Cleaner
(1:2)

Sure Klean®
Custom Masonry Cleaner
(1:4)



Sure Klean®
Custom Masonry Cleaner
(1:6)

Uncleaned Surface

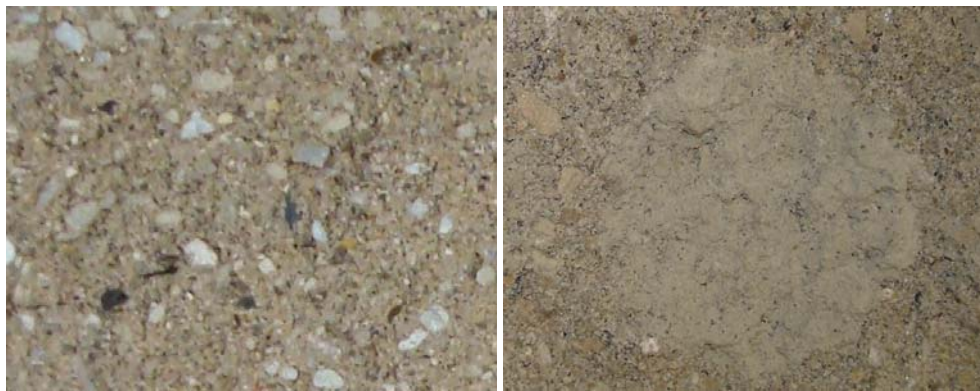
Photographs – New Construction Cleaning

**“Cedar”; Type S Mortar
7 Day Cleaning**



Sure Klean®
Custom Masonry Cleaner
(1:2)

Sure Klean®
Custom Masonry Cleaner
(1:4)

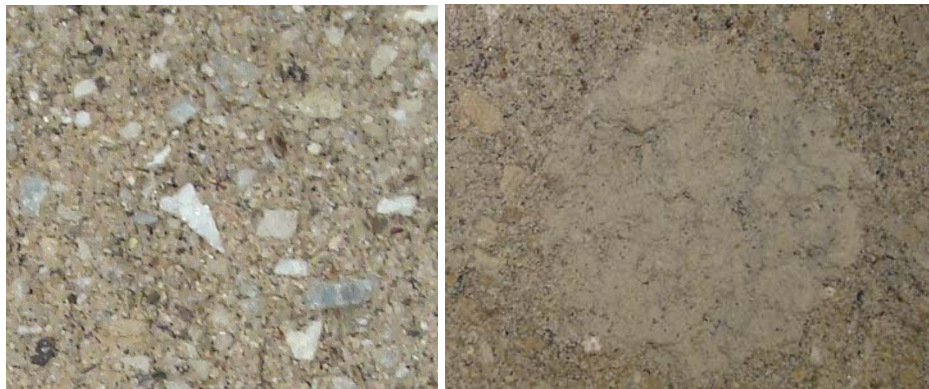


Sure Klean®
Custom Masonry Cleaner
(1:6)

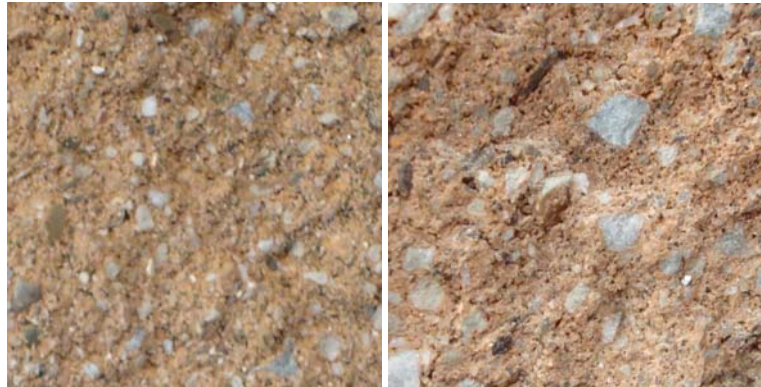
Uncleaned Surface

Photographs – New Construction Cleaning**“Cedar”; Type S Mortar
14 Day Cleaning**

| | |
|--|--|
| Sure Klean® Custom Masonry Cleaner (1:2) | Sure Klean® Custom Masonry Cleaner (1:4) |
|--|--|

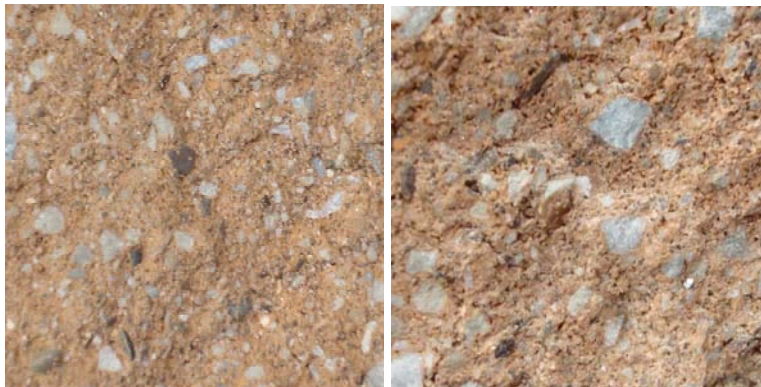


| | |
|--|-------------------|
| Sure Klean® Custom Masonry Cleaner (1:6) | Uncleaned Surface |
|--|-------------------|

Photographs – Color Uniformity**“Tan” Split-face CMU**

Sure Klean®
Custom Masonry Cleaner
(1:2)

Through-body



Sure Klean®
Custom Masonry Cleaner
(1:4)

Through-body

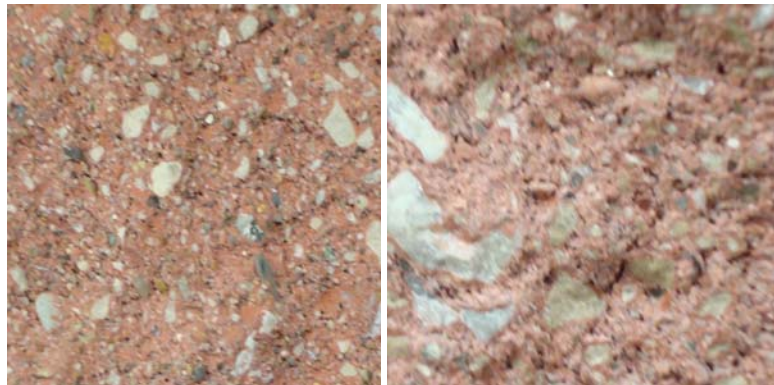


Sure Klean®
Custom Masonry Cleaner
(1:6)

Through-body

Photographs – Color Uniformity**“Red SR2” Split-face CMU**

| | |
|--|--------------|
| Sure Klean® Custom Masonry Cleaner (1:2) | Through-body |
|--|--------------|



| | |
|--|--------------|
| Sure Klean® Custom Masonry Cleaner (1:4) | Through-body |
|--|--------------|



| | |
|--|--------------|
| Sure Klean® Custom Masonry Cleaner (1:6) | Through-body |
|--|--------------|

Conclusions – New Construction Cleaning

Based on the test results, all dilutions of Sure Klean® Custom Masonry Cleaner successfully removed all of the Type S mortar from the submitted split-face CMU samples even after the mortar remained on the surface of the sample for 14 days.

All dilutions of Sure Klean® Custom Masonry Cleaner removed moderate to significant amounts of surface pigment from the surface of the split-face CMU's, exposing aggregate and exposing a slightly darker pigment when compared to the through-body.

Use higher concentrations and surface agitation to maximize aggregate exposure. Use low concentration and surface agitation to minimize aggregate exposure.

Recommendations – New Construction Cleaning

Recommendations for cleaning for each type of CMU submitted by Santerra Stonecraft, Windsor, Ontario are provided in the chart below. Recommendations are based on the optimum dilution for complete removal of mortar while providing the best match to the through-body color of the CMU's.

| Sample | New Construction Cleaning (Type S mortar, 7 day cleaning) |
|---------------------|--|
| All Submitted CMU's | Sure Klean® Custom Masonry Cleaner (1:6) |

The most appropriate cleaner and dilution should be determined on the specific job-site, and will be dependent primarily on the nature and severity of soiling present at that location.

Apply all products in accordance with the manufacturer's recommendation provided on container labels and product data sheets. On-site testing should be conducted to determine the most appropriate cleaning product and procedures for a particular project. See product literature for additional application and product information.

Protective Water Repellents

The testing described below evaluates the suitability of water repellent treatments.

The surface treatments evaluated were selected for their suitability for application based on the following selection criteria:

1. Weatherproofing properties
 2. Color change
 3. Ease of application
-

Description of Products Evaluated – Protective Water Repellents

Sure Klean® Weather Seal Blok-Guard® & Graffiti Control II – A clear-drying, water-based silicone emulsion for weatherproofing concrete block and other porous masonry materials. Blok-Guard® & Graffiti Control II also protects masonry surfaces from graffiti attacks without altering the natural appearance. Blok-Guard® & Graffiti Control II protects exterior walls exposed to normal weathering. Graffiti removal from treated surfaces is fast and easy using Defacer Eraser® Graffiti Wipe. Blok-Guard® & Graffiti Control II is easy to apply with low-pressure spray, brush or roller.

Sure Klean® Weather Seal Blok-Guard® & Graffiti Control – A clear, solvent-based silicone elastomer formulated to weatherproof concrete block and other porous masonry materials. Blok-Guard® & Graffiti Control protects masonry surfaces from repeated graffiti attacks without altering the natural appearance. Blok-Guard® & Graffiti Control penetrates and fills pores to prevent water penetration through exterior walls exposed to normal weathering. Graffiti removal is fast and easy using Defacer Eraser® Graffiti Wipe. Blok-Guard® & Graffiti Control is easy to apply with low-pressure spray, brush or roller.

Sure Klean® Weather Seal Siloxane WB Concentrate – A concentrated water repellent designed for dilution with fresh water at the job site. This solvent-free blend of silanes and oligomeric alkoxy siloxanes mixes easily with water to produce a penetrating water repellent ideal for application to dense or porous masonry surfaces. An effective alternative to conventional solvent-based silanes or siloxanes, Siloxane WB penetrates and chemically bonds deep within the masonry substrate to provide long-lasting protection against water-related staining or deterioration. Will not darken, produce a surface film or impair the natural breathing characteristics of treated surfaces.

Sample Preparation – Protective Water Repellents

The submitted samples were allowed to dry for 24 hours prior to treatment. All of the products were applied by brush in accordance with the current PROSOCO, Inc. Product Data Sheet application instructions. All treatments were allowed to cure for at least 72 hours prior to testing.

Test Methods – Protective Water Repellents**Water Absorption Tube Test: RILEM II.4, 60 mph, 20 Minutes**

The water absorption tube test simulating wind driven rain conditions was performed. This test simulates 60 mile per hour wind driven rain conditions for a period of 20 minutes. See Technical Services TECH Note RILEM Tube Test Procedures.

Test Results – Protective Water Repellents**Water Absorption Tube Test: RILEM II.4, 60 mph, 20 Minutes**

| | | Results |
|--|--|----------------|
| “Auburn Blend” | | |
| Untreated Control | | <40 |
| Sure Klean® Weather Seal Blok-Guard® & Graffiti Control II | | 60 |
| Sure Klean® Weather Seal Blok-Guard® & Graffiti Control | | 60 |
| Sure Klean® Weather Seal Siloxane WB Concentrate | | 50 |
| “Auburn Red SR2” | | |
| Untreated Control | | <40 |
| Sure Klean® Weather Seal Blok-Guard® & Graffiti Control II | | 60 |
| Sure Klean® Weather Seal Blok-Guard® & Graffiti Control | | 60 |
| Sure Klean® Weather Seal Siloxane WB Concentrate | | 48 |
| “Cedar” | | |
| Untreated Control | | <40 |
| Sure Klean® Weather Seal Blok-Guard® & Graffiti Control II | | 59 |
| Sure Klean® Weather Seal Blok-Guard® & Graffiti Control | | 59 |
| Sure Klean® Weather Seal Siloxane WB Concentrate | | 58 |
| “Charcoal” | | |
| Untreated Control | | <40 |
| Sure Klean® Weather Seal Blok-Guard® & Graffiti Control II | | 57 |
| Sure Klean® Weather Seal Blok-Guard® & Graffiti Control | | 60 |
| Sure Klean® Weather Seal Siloxane WB Concentrate | | 57 |
| “Diamond White SR2” | | |
| Untreated Control | | <40 |
| Sure Klean® Weather Seal Blok-Guard® & Graffiti Control II | | 60 |
| Sure Klean® Weather Seal Blok-Guard® & Graffiti Control | | 59 |
| Sure Klean® Weather Seal Siloxane WB Concentrate | | 57 |
| “Natural” | | |
| Untreated Control | | <40 |
| Sure Klean® Weather Seal Blok-Guard® & Graffiti Control II | | 60 |
| Sure Klean® Weather Seal Blok-Guard® & Graffiti Control | | 59 |
| Sure Klean® Weather Seal Siloxane WB Concentrate | | 58 |
| “Red SR2” | | |
| Untreated Control | | <40 |
| Sure Klean® Weather Seal Blok-Guard® & Graffiti Control II | | 58 |
| Sure Klean® Weather Seal Blok-Guard® & Graffiti Control | | 60 |
| Sure Klean® Weather Seal Siloxane WB Concentrate | | 59 |
| “Red Ash” | | |
| Untreated Control | | <40 |
| Sure Klean® Weather Seal Blok-Guard® & Graffiti Control II | | 59 |
| Sure Klean® Weather Seal Blok-Guard® & Graffiti Control | | 60 |
| Sure Klean® Weather Seal Siloxane WB Concentrate | | 60 |

Test Results – Protective Water Repellents**Water Absorption Tube Test: RILEM II.4, 60 mph, 20 Minutes**

| Results | |
|--|-----|
| “Salmon” | |
| Untreated Control | <40 |
| Sure Klean® Weather Seal Blok-Guard® & Graffiti Control II | 58 |
| Sure Klean® Weather Seal Blok-Guard® & Graffiti Control | 60 |
| Sure Klean® Weather Seal Siloxane WB Concentrate | 59 |
| “Tan” | |
| Untreated Control | <40 |
| Sure Klean® Weather Seal Blok-Guard® & Graffiti Control II | 60 |
| Sure Klean® Weather Seal Blok-Guard® & Graffiti Control | 59 |
| Sure Klean® Weather Seal Siloxane WB Concentrate | 58 |

Photographs – Protective Water Repellents**“Red Ash”; RILEM II.4, 60 mph, 20 Minutes**

| | | | |
|---|--|--|-------------------|
| Sure Klean® Weather Seal Blok-Guard® & Graffiti Control II | Sure Klean® Weather Seal Blok-Guard® & Graffiti Control | Sure Klean® Weather Seal Siloxane WB Concentrate (1:9) | Untreated Control |
|---|--|--|-------------------|

Conclusions – Protective Water Repellents

Based upon laboratory evaluations, at least two of the products tested provided excellent water repellency to the submitted samples. In addition, Sure Klean® Weather Seal Siloxane WB Concentrate and Sure Klean® Weather Seal Blok-Guard® & Graffiti Control provided a slight to moderate color enhancement to the submitted samples.

Recommendations – Protective Water Repellents

Recommendations for water repellency for each CMU submitted by Santerra Stonecraft, Windsor, Ontario are provided in the chart below. Recommendations are based on the treatment that proved most effective and can provide water repellency on all types submitted.

| Sample | Protective Water Repellents |
|--|---|
| “Auburn Blend” “Auburn Red SR2” | Sure Klean® Weather Seal Blok-Guard® & Graffiti Control II or *Sure Klean® Weather Seal Blok-Guard® & Graffiti Control |
| “Cedar” “Charcoal” “Diamond White SR2” “Natural” “Red SR2” “Red Ash” “Salmon” “Tan” | Sure Klean® Weather Seal Blok-Guard® & Graffiti Control II or *Sure Klean® Weather Seal Blok-Guard® & Graffiti Control or Sure Klean® Weather Seal Siloxane WB Concentrate (1:9) |

***NOTE:** Sure Klean® Weather Seal Blok-Guard® & Graffiti Control is manufactured and marketed in compliance with VOC regulations. This product may not be suitable for sale in states and districts with more restrictive regulations.

Apply all products in accordance with the manufacturer's recommendation provided on container labels and product data sheets. On-site testing should be conducted to determine the most appropriate water repellent product and procedures for a particular project. See product literature for additional application and product information.

Graffiti Control

This evaluation compares the effectiveness of graffiti control treatments in preventing staining of enamel spray paint and permanent markers.

Description of Products Evaluated – Graffiti Control

Graffiti Control Treatments

Sure Klean® Weather Seal Blok-Guard® & Graffiti Control – A clear, solvent-based silicone elastomer formulated to weatherproof concrete block and other porous masonry materials. Blok-Guard® & Graffiti Control protects masonry surfaces from repeated graffiti attacks without altering the natural appearance. Blok-Guard® & Graffiti Control penetrates and fills pores to prevent water penetration through exterior walls exposed to normal weathering. Graffiti removal is fast and easy using Defacer Eraser® Graffiti Wipe. Blok-Guard® & Graffiti Control is easy to apply with low-pressure spray, brush or roller.

Sure Klean® Weather Seal Blok-Guard® & Graffiti Control II – A clear-drying, water-based silicone emulsion for weatherproofing concrete block and other porous masonry materials. Blok-Guard® & Graffiti Control II also protects masonry surfaces from graffiti attacks without altering the natural appearance. Blok-Guard® & Graffiti Control II protects exterior walls exposed to normal weathering. Graffiti removal from treated surfaces is fast and easy using Defacer Eraser® Graffiti Wipe. Blok-Guard® & Graffiti Control II is easy to apply with low-pressure spray, brush or roller.

Products Evaluated for Graffiti Removal

Defacer Eraser® Graffiti Wipe – An easy-to-use graffiti remover that does not contain methanol, methylene chloride or other halogenated solvents prohibited on many projects. Graffiti Wipe removes a variety of graffiti stains from most smooth masonry, split-face concrete block, wood and metal surfaces.

Sure Klean® Fast Acting Stripper – A thixotropic stripping compound formulated specifically for removal of high strength paints and coatings such as epoxies, polyurethanes, and floor enamels. Additionally, Fast Acting Stripper dissolves most spray paints, marking pens, lacquers and other graffiti.

Enviro Klean® SafStrip® 8 – Enviro Klean® SafStrip® 8 is a neutral-pH stripping compound for nearly any hard surface – masonry, concrete, wood or metal. It bears the Enviro Klean® brand because it removes most high-strength paints and clear coats without the methylene chloride or methanol found in traditional solvent paint strippers. Use SafStrip 8 to break the bond of the toughest oil-based “alkyd” paints, acrylics, lacquers and clear sealers. It also removes graffiti media such as spray paint and “magic” marker. SafStrip 8’s gel-like consistency makes it hard to spill and easy to apply. It immediately emulsifies in water.

Graffiti Agents

Interior/Exterior Spray Paint (Red)
Permanent Marker (Green)
Permanent Marker (Red)
Permanent Marker (Black)

Sample Preparation – Graffiti Control

Sections of the CMU’s were treated with Sure Klean® Weather Seal Blok-Guard® & Graffiti Control and Sure Klean® Weather Seal Blok-Guard® & Graffiti Control II in accordance with the current PROSOCO, Inc. Product Data Sheet application instructions and allowed to cure for at least one day. At the end of the cure period, a visual adverse effects evaluation was made and then the graffiti agents were applied to the substrates.

Spray paint and markers were applied as graffiti agents to all treated surfaces no sooner than one day following application of Sure Klean® Weather Seal Blok-Guard® & Graffiti Control and Sure Klean® Weather Seal Blok-Guard® & Graffiti Control II. Removal of the graffiti agents was attempted 24 hours after application of the graffiti agents, using Defacer Eraser® Graffiti Wipe, Sure Klean® Fast Acting Stripper, and Enviro Klean® SafStrip® 8.

Test Method – Graffiti Control

Chemical cleaners were evaluated using the following procedure:

1. Apply the product to a dry surface, soiled with graffiti.
2. Allow appropriate dwell time:
 - Defacer Eraser® Graffiti Wipe5 minutes
 - Sure Klean® Fast Acting Stripper20 minutes
 - Enviro Klean® SafStrip® 830 minutes
3. Pressure rinse thoroughly until water runs clear. *
4. Allow the surface to dry thoroughly and visually examine to determine effectiveness.

***Pressure Rinsing Equipment** – Masonry washing equipment generating approximately 700-800 psi with a water flow rate of 8 gallons per minute delivered through a 45 degree fan spray tip was used for rinsing.

Test Results – Graffiti Control

| “Auburn Blend” | | | | | |
|--|-----------|--------------|--------------|------------|----------------|
| Untreated Control | Red Paint | Black Marker | Green Marker | Red Marker | % Avg. Removal |
| Sure Klean® Fast Acting Stripper | 70 | 70 | 50 | 50 | 60 |
| Defacer Eraser® Graffiti Wipe | 40 | 60 | 40 | 40 | 45 |
| Enviro Klean® SafStrip® 8 | 65 | 60 | 50 | 50 | 56 |
| Sure Klean® Weather Seal Blok-Guard® & Graffiti Control | Red Paint | Black Marker | Green Marker | Red Marker | % Avg. Removal |
| Sure Klean® Fast Acting Stripper | 75 | 70 | 55 | 65 | 66 |
| Defacer Eraser® Graffiti Wipe | 60 | 40 | 40 | 40 | 45 |
| Enviro Klean® SafStrip® 8 | 60 | 60 | 55 | 55 | 58 |
| Sure Klean® Weather Seal Blok-Guard® & Graffiti Control II | Red Paint | Black Marker | Green Marker | Red Marker | % Avg. Removal |
| Sure Klean® Fast Acting Stripper | 65 | 100 | 95 | 95 | 89 |
| Defacer Eraser® Graffiti Wipe | 55 | 100 | 95 | 95 | 86 |
| Enviro Klean® SafStrip® 8 | 70 | 95 | 100 | 95 | 90 |
| “Auburn Red SR2” | | | | | |
| Untreated Control | Red Paint | Black Marker | Green Marker | Red Marker | % Avg. Removal |
| Sure Klean® Fast Acting Stripper | 90 | 80 | 70 | 65 | 76 |
| Defacer Eraser® Graffiti Wipe | 40 | 50 | 60 | 50 | 50 |
| Enviro Klean® SafStrip® 8 | 60 | 50 | 90 | 50 | 62 |
| Sure Klean® Weather Seal Blok-Guard® & Graffiti Control | Red Paint | Black Marker | Green Marker | Red Marker | % Avg. Removal |
| Sure Klean® Fast Acting Stripper | 80 | 95 | 100 | 100 | 93 |
| Defacer Eraser® Graffiti Wipe | 60 | 95 | 100 | 100 | 89 |
| Enviro Klean® SafStrip® 8 | 60 | 90 | 100 | 100 | 88 |
| Sure Klean® Weather Seal Blok-Guard® & Graffiti Control II | Red Paint | Black Marker | Green Marker | Red Marker | % Avg. Removal |
| Sure Klean® Fast Acting Stripper | 95 | 80 | 85 | 95 | 89 |
| Defacer Eraser® Graffiti Wipe | 40 | 50 | 80 | 70 | 60 |
| Enviro Klean® SafStrip® 8 | 60 | 75 | 90 | 85 | 78 |

Test Results – Graffiti Control

| “Cedar” | | | | | |
|--|-----------|--------------|--------------|------------|----------------|
| Untreated Control | Red Paint | Black Marker | Green Marker | Red Marker | % Avg. Removal |
| Sure Klean® Fast Acting Stripper | 90 | 55 | 50 | 55 | 63 |
| Defacer Eraser® Graffiti Wipe | 50 | 40 | 40 | 40 | 43 |
| Enviro Klean® SafStrip® 8 | 60 | 50 | 50 | 50 | 53 |
| Sure Klean® Weather Seal Blok-Guard® & Graffiti Control | Red Paint | Black Marker | Green Marker | Red Marker | % Avg. Removal |
| Sure Klean® Fast Acting Stripper | 90 | 90 | 85 | 85 | 88 |
| Defacer Eraser® Graffiti Wipe | 75 | 85 | 75 | 75 | 78 |
| Enviro Klean® SafStrip® 8 | 80 | 70 | 80 | 70 | 75 |
| Sure Klean® Weather Seal Blok-Guard® & Graffiti Control II | Red Paint | Black Marker | Green Marker | Red Marker | % Avg. Removal |
| Sure Klean® Fast Acting Stripper | 85 | 60 | 50 | 70 | 66 |
| Defacer Eraser® Graffiti Wipe | 75 | 40 | 40 | 40 | 49 |
| Enviro Klean® SafStrip® 8 | 55 | 60 | 50 | 50 | 54 |
| “Charcoal” | | | | | |
| Untreated Control | Red Paint | Black Marker | Green Marker | Red Marker | % Avg. Removal |
| Sure Klean® Fast Acting Stripper | 75 | 100 | 50 | 50 | 69 |
| Defacer Eraser® Graffiti Wipe | 40 | 70 | 50 | 50 | 53 |
| Enviro Klean® SafStrip® 8 | 60 | 100 | 50 | 50 | 65 |
| Sure Klean® Weather Seal Blok-Guard® & Graffiti Control | Red Paint | Black Marker | Green Marker | Red Marker | % Avg. Removal |
| Sure Klean® Fast Acting Stripper | 85 | 100 | 60 | 75 | 80 |
| Defacer Eraser® Graffiti Wipe | 70 | 100 | 60 | 70 | 75 |
| Enviro Klean® SafStrip® 8 | 85 | 100 | 60 | 70 | 78 |
| Sure Klean® Weather Seal Blok-Guard® & Graffiti Control II | Red Paint | Black Marker | Green Marker | Red Marker | % Avg. Removal |
| Sure Klean® Fast Acting Stripper | 55 | 80 | 75 | 80 | 73 |
| Defacer Eraser® Graffiti Wipe | 60 | 60 | 60 | 60 | 60 |
| Enviro Klean® SafStrip® 8 | 75 | 80 | 65 | 75 | 78 |
| “Diamond White SR2” | | | | | |
| Untreated Control | Red Paint | Black Marker | Green Marker | Red Marker | % Avg. Removal |
| Sure Klean® Fast Acting Stripper | 70 | 65 | 50 | 50 | 59 |
| Defacer Eraser® Graffiti Wipe | 50 | 30 | 30 | 30 | 43 |
| Enviro Klean® SafStrip® 8 | 55 | 40 | 40 | 40 | 44 |
| Sure Klean® Weather Seal Blok-Guard® & Graffiti Control | Red Paint | Black Marker | Green Marker | Red Marker | % Avg. Removal |
| Sure Klean® Fast Acting Stripper | 70 | 80 | 80 | 80 | 78 |
| Defacer Eraser® Graffiti Wipe | 65 | 70 | 70 | 70 | 69 |
| Enviro Klean® SafStrip® 8 | 60 | 65 | 65 | 65 | 64 |
| Sure Klean® Weather Seal Blok-Guard® & Graffiti Control II | Red Paint | Black Marker | Green Marker | Red Marker | % Avg. Removal |
| Sure Klean® Fast Acting Stripper | 70 | 50 | 45 | 45 | 53 |
| Defacer Eraser® Graffiti Wipe | 50 | 40 | 40 | 40 | 43 |
| Enviro Klean® SafStrip® 8 | 60 | 40 | 40 | 40 | 45 |

Test Results – Graffiti Control

| “Natural” | | | | | |
|--|-----------|--------------|--------------|------------|----------------|
| Untreated Control | Red Paint | Black Marker | Green Marker | Red Marker | % Avg. Removal |
| Sure Klean® Fast Acting Stripper | 90 | 40 | 40 | 40 | 53 |
| Defacer Eraser® Graffiti Wipe | 65 | 45 | 40 | 40 | 48 |
| Enviro Klean® SafStrip® 8 | 75 | 40 | 40 | 40 | 49 |
| Sure Klean® Weather Seal Blok-Guard® & Graffiti Control | Red Paint | Black Marker | Green Marker | Red Marker | % Avg. Removal |
| Sure Klean® Fast Acting Stripper | 85 | 70 | 85 | 80 | 80 |
| Defacer Eraser® Graffiti Wipe | 85 | 50 | 40 | 50 | 57 |
| Enviro Klean® SafStrip® 8 | 85 | 70 | 65 | 70 | 73 |
| Sure Klean® Weather Seal Blok-Guard® & Graffiti Control II | Red Paint | Black Marker | Green Marker | Red Marker | % Avg. Removal |
| Sure Klean® Fast Acting Stripper | 90 | 85 | 40 | 60 | 69 |
| Defacer Eraser® Graffiti Wipe | 65 | 40 | 40 | 40 | 46 |
| Enviro Klean® SafStrip® 8 | 60 | 40 | 40 | 40 | 45 |
| “Red SR2” | | | | | |
| Untreated Control | Red Paint | Black Marker | Green Marker | Red Marker | % Avg. Removal |
| Sure Klean® Fast Acting Stripper | 90 | 80 | 70 | 65 | 76 |
| Defacer Eraser® Graffiti Wipe | 40 | 50 | 60 | 50 | 50 |
| Enviro Klean® SafStrip® 8 | 60 | 50 | 90 | 50 | 63 |
| Sure Klean® Weather Seal Blok-Guard® & Graffiti Control | Red Paint | Black Marker | Green Marker | Red Marker | % Avg. Removal |
| Sure Klean® Fast Acting Stripper | 80 | 95 | 100 | 100 | 94 |
| Defacer Eraser® Graffiti Wipe | 60 | 95 | 100 | 100 | 89 |
| Enviro Klean® SafStrip® 8 | 60 | 90 | 100 | 100 | 88 |
| Sure Klean® Weather Seal Blok-Guard® & Graffiti Control II | Red Paint | Black Marker | Green Marker | Red Marker | % Avg. Removal |
| Sure Klean® Fast Acting Stripper | 95 | 80 | 85 | 95 | 89 |
| Defacer Eraser® Graffiti Wipe | 40 | 50 | 80 | 70 | 60 |
| Enviro Klean® SafStrip® 8 | 60 | 75 | 90 | 85 | 78 |
| “Red Ash” | | | | | |
| Untreated Control | Red Paint | Black Marker | Green Marker | Red Marker | % Avg. Removal |
| Sure Klean® Fast Acting Stripper | 70 | 65 | 55 | 55 | 61 |
| Defacer Eraser® Graffiti Wipe | 50 | 40 | 40 | 40 | 43 |
| Enviro Klean® SafStrip® 8 | 55 | 50 | 40 | 40 | 46 |
| Sure Klean® Weather Seal Blok-Guard® & Graffiti Control | Red Paint | Black Marker | Green Marker | Red Marker | % Avg. Removal |
| Sure Klean® Fast Acting Stripper | 70 | 65 | 90 | 90 | 79 |
| Defacer Eraser® Graffiti Wipe | 65 | 65 | 90 | 70 | 73 |
| Enviro Klean® SafStrip® 8 | 60 | 65 | 85 | 70 | 70 |
| Sure Klean® Weather Seal Blok-Guard® & Graffiti Control II | Red Paint | Black Marker | Green Marker | Red Marker | % Avg. Removal |
| Sure Klean® Fast Acting Stripper | 60 | 65 | 70 | 80 | 69 |
| Defacer Eraser® Graffiti Wipe | 40 | 50 | 60 | 60 | 53 |
| Enviro Klean® SafStrip® 8 | 50 | 65 | 55 | 60 | 58 |

Test Results – Graffiti Control

| “Salmon” | | | | | |
|---|------------------|---------------------|---------------------|-------------------|-----------------------|
| Untreated Control | Red Paint | Black Marker | Green Marker | Red Marker | % Avg. Removal |
| Sure Klean® Fast Acting Stripper | 70 | 80 | 60 | 65 | 69 |
| Defacer Eraser® Graffiti Wipe | 45 | 65 | 60 | 65 | 59 |
| Enviro Klean® SafStrip® 8 | 60 | 60 | 60 | 55 | 61 |
| Sure Klean® Weather Seal Blok-Guard® & Graffiti Control | Red Paint | Black Marker | Green Marker | Red Marker | % Avg. Removal |
| Sure Klean® Fast Acting Stripper | 85 | 95 | 100 | 85 | 91 |
| Defacer Eraser® Graffiti Wipe | 80 | 95 | 95 | 95 | 90 |
| Enviro Klean® SafStrip® 8 | 80 | 80 | 95 | 80 | 84 |
| Sure Klean® Weather Seal Blok-Guard® & Graffiti Control II | Red Paint | Black Marker | Green Marker | Red Marker | % Avg. Removal |
| Sure Klean® Fast Acting Stripper | 80 | 70 | 60 | 65 | 69 |
| Defacer Eraser® Graffiti Wipe | 50 | 55 | 60 | 60 | 56 |
| Enviro Klean® SafStrip® 8 | 60 | 65 | 55 | 60 | 60 |
| “Tan” | | | | | |
| Untreated Control | Red Paint | Black Marker | Green Marker | Red Marker | % Avg. Removal |
| Sure Klean® Fast Acting Stripper | 70 | 75 | 55 | 60 | 65 |
| Defacer Eraser® Graffiti Wipe | 60 | 40 | 40 | 40 | 45 |
| Enviro Klean® SafStrip® 8 | 60 | 55 | 50 | 40 | 51 |
| Sure Klean® Weather Seal Blok-Guard® & Graffiti Control | Red Paint | Black Marker | Green Marker | Red Marker | % Avg. Removal |
| Sure Klean® Fast Acting Stripper | 85 | 70 | 60 | 80 | 74 |
| Defacer Eraser® Graffiti Wipe | 90 | 60 | 50 | 60 | 65 |
| Enviro Klean® SafStrip® 8 | 90 | 70 | 60 | 70 | 73 |
| Sure Klean® Weather Seal Blok-Guard® & Graffiti Control II | Red Paint | Black Marker | Green Marker | Red Marker | % Avg. Removal |
| Sure Klean® Fast Acting Stripper | 60 | 80 | 55 | 70 | 66 |
| Defacer Eraser® Graffiti Wipe | 50 | 50 | 40 | 50 | 48 |
| Enviro Klean® SafStrip® 8 | 55 | 60 | 40 | 55 | 53 |

Photographs – Graffiti Control**“Natural” Split-Face CMU**

Sure Klean® Weather Seal
Blok-Guard® & Graffiti Control II



Sure Klean® Weather Seal
Blok-Guard® & Graffiti Control II



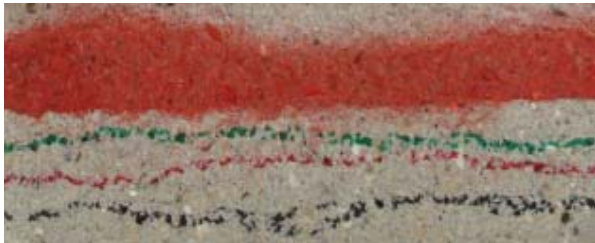
Sure Klean® Weather Seal
Blok-Guard® & Graffiti Control



Sure Klean® Weather Seal
Blok-Guard® & Graffiti Control



Untreated Control

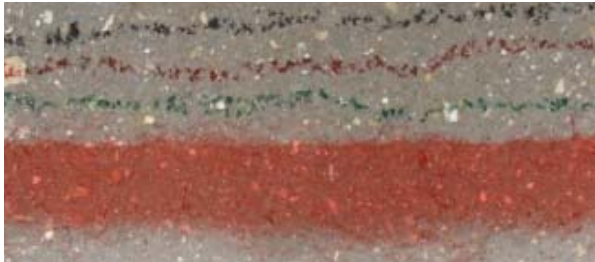


Untreated Control



| | | | | |
|---------------------------------|--|--|--|-------------------------------------|
| Enviro Klean® SafStrip® 8 | | Sure Klean® Fast Acting Stripper | | Defacer Eraser® Graffiti Wipe |
|---------------------------------|--|--|--|-------------------------------------|

| | | | | |
|---------------------------------|--|--|--|-------------------------------------|
| Enviro Klean® SafStrip® 8 | | Sure Klean® Fast Acting Stripper | | Defacer Eraser® Graffiti Wipe |
|---------------------------------|--|--|--|-------------------------------------|

Photographs – Graffiti Control**“Charcoal” Split-Face CMU**Sure Klean® Weather Seal
Blok-Guard® & Graffiti Control IISure Klean® Weather Seal
Blok-Guard® & Graffiti Control IISure Klean® Weather Seal
Blok-Guard® & Graffiti ControlSure Klean® Weather Seal
Blok-Guard® & Graffiti Control

Untreated Control



Untreated Control



| | | | | |
|---------------------------------|--|--|--|-------------------------------------|
| Enviro Klean® SafStrip® 8 | | Sure Klean® Fast Acting Stripper | | Defacer Eraser® Graffiti Wipe |
|---------------------------------|--|--|--|-------------------------------------|

| | | | | |
|---------------------------------|--|---|--|-------------------------------------|
| Enviro Klean® SafStrip® 8 | | Sure Klean® Fast Acting Stripper | | Defacer Eraser® Graffiti Wipe |
|---------------------------------|--|---|--|-------------------------------------|

Conclusions – Graffiti Control

Based upon laboratory evaluations, graffiti removal was improved when the submitted samples were treated with Sure Klean® Weather Seal Blok-Guard® & Graffiti Control and/or Sure Klean® Weather Seal Blok-Guard® & Graffiti Control II prior to graffiti application. Both graffiti repellents were effective in preventing the staining and penetration of the red enamel spray paint and permanent markers.

Recommendations – Graffiti Control

Recommendations for graffiti control treatment for each CMU submitted by Santerra Stonecraft, Windsor, Ontario are provided in the chart below. Recommendations are based on the treatment that proved most effective for providing graffiti repellency and the product that was most effective at removing the graffiti on all types submitted.

| Sample | Graffiti Repellents | Graffiti Removers |
|--|--|--|
| "Auburn Blend" | Sure Klean® Weather Seal Blok-Guard® & Graffiti Control II | Sure Klean® Fast Acting Stripper or Defacer Eraser® Graffiti Wipe or Enviro Klean® SafStrip® 8 |
| "Auburn Red SR2" | Sure Klean® Weather Seal Blok-Guard® & Graffiti Control II or *Sure Klean® Weather Seal Blok-Guard® & Graffiti Control | Sure Klean® Fast Acting Stripper or Defacer Eraser® Graffiti Wipe or Enviro Klean® SafStrip® 8 |
| "Cedar" "Charcoal" "Diamond White SR2" "Natural" "Red Ash" "Salmon" | *Sure Klean® Weather Seal Blok-Guard® & Graffiti Control | Sure Klean® Fast Acting Stripper |

Recommendations – Graffiti Control

| Sample | Graffiti Repellents | Graffiti Removers |
|-----------|---|--|
| "Red SR2" | *Sure Klean® Weather Seal Blok-Guard® & Graffiti Control | Sure Klean® Fast Acting Stripper or Defacer Eraser® Graffiti Wipe or Enviro Klean® SafStrip® 8 |
| | Or Sure Klean® Weather Seal Blok-Guard® & Graffiti Control II | Or Sure Klean® Fast Acting Stripper |
| "Tan" | *Sure Klean® Weather Seal Blok-Guard® & Graffiti Control | Sure Klean® Fast Acting Stripper or Enviro Klean® SafStrip® 8 |

***NOTE:** Sure Klean® Weather Seal Blok-Guard® & Graffiti Control is manufactured and marketed in compliance with VOC regulations. This product may not be suitable for sale in states and districts with more restrictive regulations.

Apply all products in accordance with the manufacturer's recommendation provided on container labels and product data sheets. Because the severity of graffiti varies from location to location, on-site testing should be conducted to determine the most appropriate graffiti control product and procedure for a particular project



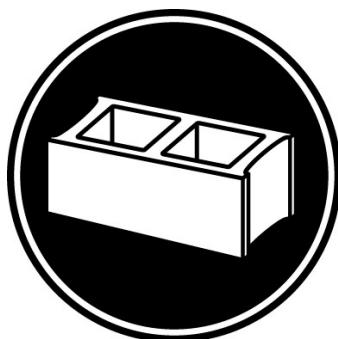
Alia Bober
Project Testing Laboratory Technician



PALLET TAG PROGRAM

Laboratory Report

Santerra Stonecraft
5115 Rhodes Drive
Windsor, Ontario N8N 2M1



Project No. 0809-06 PTP

Prepared For:
PROSOCO
SINCE 1939

Prepared By:
AMT Laboratories
October 2008