

Table of Contents

Executive Summary	i
Submitted Information	1
Purpose of Testing.....	2
Purpose of Testing	3
Products Evaluated	4
New Construction Cleaning	5
Description of Products Evaluated – New Construction Cleaning	5
Sample Preparation – New Construction Cleaning	5
Test Method – New Construction Cleaning	5
Test Results – New Construction Cleaning	6
Test Results – New Construction Cleaning	7
Test Results – Color Uniformity	9
Photographs – New Construction Cleaning	10
Photographs – New Construction Cleaning	11
Photographs – New Construction Cleaning	12
Photographs – New Construction Cleaning	13
Photographs – New Construction Cleaning	14
Photographs – New Construction Cleaning	15
Photographs – Color Uniformity	16
Photographs – Color Uniformity	17
Photograph – Heavy Efflorescence.....	18
Conclusions – New Construction Cleaning.....	19
Recommendations – New Construction Cleaning	19
Protective Water Repellents.....	20
Description of Products Evaluated – Protective Water Repellents	20
Sample Preparation – Protective Water Repellents.....	20
Test Methods – Protective Water Repellents.....	20
Test Results – Protective Water Repellents	21
Photographs – Protective Water Repellents	22
Conclusions – Protective Water Repellents	23
Recommendations – Protective Water Repellents	23
Graffiti Control.....	24
Description of Products Evaluated – Graffiti Control.....	24
Sample Preparation – Graffiti Control	24
Test Method – Graffiti Control	25
Test Results – Graffiti Control	25
Photographs – Graffiti Control.....	28
Photographs – Graffiti Control.....	29
Photographs – Graffiti Control.....	30
Conclusions – Graffiti Control	31
Recommendations – Graffiti Control	31
Recommendations – Graffiti Control	32
Attachments	
Technical Services TECH Note RILEM Tube Test Procedures	

Submitted Information

For: Gene Bollinger
cc: Paul Tessier
Steve Dean
Brian Koenings

Subject: Basalite Concrete Products
Dupont, WA

Date: March 4, 2009

Project: 0807-11 PTP

Samples Submitted: 8 types of Concrete Masonry Units (CMU's)

Sample	Name	Color	Integral Water Repellent	Size
Smooth-face CMU	"MWA Charcoal"	Dark Gray	Dry-Block®	15 5/8" x 7 5/8" x 7 5/8"
Smooth-face CMU	"MWA Natural"	Gray	Dry-Block®	15 5/8" x 7 5/8" x 7 5/8"
Smooth-face CMU	"MWA Sandstone"	Buff	Dry-Block®	15 5/8" x 7 5/8" x 7 5/8"
Smooth-face CMU	"Bond Beam MWA Khaki"	Brown	Dry-Block®	15 5/8" x 7 5/8" x 7 5/8"
Smooth-face CMU	"MWA Bordeaux"	Red	Dry-Block®	15 5/8" x 7 5/8" x 7 5/8"
Split-face CMU	"Bond Beam MWA Bordeaux"	Red	Dry-Block®	15 5/8" x 7 5/8" x 7 5/8"
Split-face CMU	"MWA Khaki"	Brown	Dry-Block®	15 5/8" x 7 5/8" x 7 5/8"
Split-face CMU	"MWA Natural"	Gray	Dry-Block®	15 5/8" x 7 5/8" x 7 5/8"

Submitted by: Gene Bollinger

Purpose of Testing

Eight types of integrally colored CMU's, all with large, small and fine aggregate were submitted for testing to AMT Laboratories by PROSOCO, Inc. to determine the optimum cleaning/cure time combination for complete removal of mortar and related new construction soiling. The effectiveness of protective water repellents and graffiti control products suitable for CMU's was also evaluated.

New Construction Cleaning – Sure Klean® Custom Masonry Cleaner and Sure Klean® Burnished Custom Masonry Cleaner were evaluated to determine the optimal concentration of cleaner for removal of laboratory applied mortar.

To simulate new construction soiling all samples were placed on a bench with finished surface facing upward. Hollow cylinders measuring 50 mm in diameter and 75 mm tall were positioned on top of each sample and filled with a wet mixture of Type S mortar. The wet, mortar-filled cylinder was allowed to remain in contact with the samples for 10 minutes before removal.

Heavy deposits of mortar were removed with dry scraping after 24 hours. Prepared cleaning solutions were then evaluated for their effectiveness in removing residual Type S mortar staining after 3 days, 7 days, and 14 days of curing.

For the split-face CMU's: color uniformity was evaluated by comparing aggregate exposure and surface pigment alteration/removal of each cleaned surface compared to the natural through-body color of the split-face CMU. For the smooth-face CMU's: color uniformity was evaluated by comparing aggregate exposure and surface pigment alteration/removal of each cleaned surface compared to the uncleaned surface.

Aggregate Exposure; Split-face CMU's: is the visual examination comparing aggregate exposure of the interior, through-body section of the split-face CMU to surfaces cleaned with selected product(s) at given dilutions. Aggregate Exposure; Smooth-face CMU's: is the visual examination comparing aggregate exposure of the uncleaned surface to cleaned surfaces with the selected product(s) at given dilutions.

Surface Pigment Alteration/Removal; Split-face CMU's: is the visual examination comparing the pigmentation of the interior, through-body section of the CMU to surfaces cleaned with selected product(s) at given dilutions. Pigment Alteration/Removal; Smooth-face CMU's: is the visual examination comparing the surface pigmentation of the uncleaned surface to the cleaned surface with the selected product(s) at given dilutions.

Split-face CMU:

The following is the scale used for reporting results of both categories:

- | | |
|--|---------------------------------------|
| 0 – Worst match to through-body | 3 – Good match to through-body |
| 1 – Poor match to through-body | 4 – Best match to through-body |
| 2 – Fair match to through-body | |

Smooth-face CMU:

The following is the scale used for reporting results of both categories:

- | | |
|---|--|
| 0 – Worst match to uncleaned surface | 3 – Good match to uncleaned surface |
| 1 – Poor match to uncleaned surface | 4 – Best match to uncleaned surface |
| 2 – Fair match to uncleaned surface | |

Purpose of Testing

Protective Water Repellents – Sure Klean® Weather Seal Blok-Guard® & Graffiti Control, Sure Klean® Weather Seal Blok-Guard® & Graffiti Control II, and Sure Klean® Weather Seal Siloxane WB concentrate were evaluated for their ability to provide water repellency to the submitted samples.

Graffiti Control – Sure Klean® Weather Seal Blok-Guard® & Graffiti Control and Sure Klean® Weather Seal Blok-Guard® & Graffiti Control II were evaluated for their ability to control graffiti on the submitted samples. Sure Klean® Fast Acting Stripper, Defacer Eraser® Graffiti Wipe, and Enviro Klean® SafStrip®8 were evaluated for their ability to remove graffiti from the submitted samples.

Products Evaluated**New Construction Cleaning Products Evaluated**

Sample	Product	Dilution
All Submitted CMU's	Sure Klean® Custom Masonry Cleaner	1:2, 1:4, 1:6
	Sure Klean® Burnished Custom Masonry Cleaner	1:2, 1:3

Protective Water Repellent Products Evaluated

Sample	Product	Dilution
All Submitted CMU's	Sure Klean® Weather Seal Blok-Guard® & Graffiti Control	Concentrate
	Sure Klean® Weather Seal Blok-Guard® & Graffiti Control II	Concentrate
	Sure Klean® Weather Seal Siloxane WB Concentrate	1:9

Graffiti Control Products Evaluated

Sample	Product	Dilution
All Submitted CMU's	Sure Klean® Weather Seal Blok-Guard® & Graffiti Control	Concentrate
	Sure Klean® Weather Seal Blok-Guard® & Graffiti Control II	Concentrate

Graffiti Removal Products Evaluated

Sample	Product	Dilution
All Submitted CMU's	Enviro Klean® SafStrip® 8	Concentrate
	Sure Klean® Fast Acting Stripper	Concentrate
	Defacer Eraser® Graffiti Wipe	Concentrate

New Construction Cleaning

These cleaning trials were conducted to determine the optimal cleaning/cure time combination to most efficiently remove Type S mortar from the submitted samples while providing the best color uniformity.

Description of Products Evaluated – New Construction Cleaning

Sure Klean® Custom Masonry Cleaner – A general purpose, concentrated acidic cleaner for most custom masonry and colored concrete. Removes concrete splashes, excess mortar, mud, heavy efflorescence and surface soiling, leaving the masonry clean and uniform with no acid burning or streaking. Liquid concentrate for dilution with 2-6 parts water. Apply by brush or low-pressure spray.

Sure Klean® Burnished Custom Masonry Cleaner – Removes common construction and atmospheric staining from custom masonry and other architectural concrete surfaces. This general-purpose, non-etching, acidic cleaner removes rust, mud, oil, atmospheric dirt, mortar smears and other stains without altering the surface texture. Burnished Custom Masonry Cleaner adds depth to colors and brightens white matrices and exposed aggregate.

Sample Preparation – New Construction Cleaning

Type S mortar was prepared in compliance with the manufacturer's instructions, applied to the samples and allowed to cure for 3, 7, and 14 days. Mortar removal was accomplished using chemical assistance and a high-pressure water rinse with pressure rinsing equipment. The removal of Type S masonry mortar was visually evaluated after 3, 7, and 14 days of curing. A visual examination was also made to determine the optimal dilution of the tested cleaners that provides the best color uniformity.

Test Method – New Construction Cleaning

Chemical cleaners were evaluated using the following procedure:

1. Pre-wet the surface with water.
2. Apply at the appropriate dilutions.
3. Allow appropriate dwell time, as specified.

Sure Klean® Custom Masonry Cleaner.....	3 minutes
Sure Klean® Burnished Custom Masonry Cleaner	3 minutes
4. Reapply the product and moderately agitate with a brush.
5. Pressure rinse thoroughly.*
6. Allow the sample to dry for at least 18 hours and visually examine.
7. *Split-face CMU*: Break the sample in half and compare the through-body surfaces to the cleaned surfaces for the best match.
Smooth-face CMU: Visually compare the color of the cleaned surfaces of the concrete masonry unit to an uncleaned surface for the best match.

***Pressure Rinsing Equipment** – Masonry washing equipment generating approximately 700-800 psi with a water flow rate of 8 gallons per minute delivered through a 45 degree fan spray tip was used for rinsing.

Test Results – New Construction Cleaning**Cleaning Effectiveness (% Type S Mortar Removal)**

“Split-Face Bond Beam MWA Bordeaux”				
Product	Dilution	3 day	7 day	14 day
Sure Klean® Custom Masonry Cleaner	1:2	100 %	98 %	95 %
Sure Klean® Custom Masonry Cleaner	1:4	90 %	98 %	95 %
Sure Klean® Custom Masonry Cleaner	1:6	98 %	95 %	95 %
Sure Klean® Burnished Custom Masonry Cleaner	1:2	95 %	95 %	95 %
Sure Klean® Burnished Custom Masonry Cleaner	1:3	95 %	95 %	95 %
“Split-Face MWA Khaki”				
Product	Dilution	3 day	7 day	14 day
Sure Klean® Custom Masonry Cleaner	1:2	95 %	95 %	98 %
Sure Klean® Custom Masonry Cleaner	1:4	90 %	80 %	95 %
Sure Klean® Custom Masonry Cleaner	1:6	98 %	90 %	98 %
Sure Klean® Burnished Custom Masonry Cleaner	1:2	95 %	100 %	95 %
Sure Klean® Burnished Custom Masonry Cleaner	1:3	95 %	98 %	98 %
“Split-Face MWA Natural”				
Product	Dilution	3 day	7 day	14 day
Sure Klean® Custom Masonry Cleaner	1:2	100 %	100 %	100 %
Sure Klean® Custom Masonry Cleaner	1:4	98 %	95 %	90 %
Sure Klean® Custom Masonry Cleaner	1:6	98 %	95 %	98 %
Sure Klean® Burnished Custom Masonry Cleaner	1:2	75 %	90 %	75 %
Sure Klean® Burnished Custom Masonry Cleaner	1:3	75 %	98 %	75 %

Test Results – New Construction Cleaning**Cleaning Effectiveness (% Type S Mortar Removal)**

“Smooth- Face MWA Charcoal”				
Product	Dilution	3 day	7 day	14 day
Sure Klean® Custom Masonry Cleaner	1:2	100 %	100 %	100 %
Sure Klean® Custom Masonry Cleaner	1:4	100 %	100 %	90 %
Sure Klean® Custom Masonry Cleaner	1:6	100 %	100 %	100 %
Sure Klean® Burnished Custom Masonry Cleaner	1:2	85 %	98 %	98 %
Sure Klean® Burnished Custom Masonry Cleaner	1:3	90 %	98 %	95 %
“Smooth- Face MWA Natural”				
Product	Dilution	3 day	7 day	14 day
Sure Klean® Custom Masonry Cleaner	1:2	95 %	98 %	95 %
Sure Klean® Custom Masonry Cleaner	1:4	95 %	98 %	90 %
Sure Klean® Custom Masonry Cleaner	1:6	98 %	95 %	95 %
Sure Klean® Burnished Custom Masonry Cleaner	1:2	95 %	95 %	95 %
Sure Klean® Burnished Custom Masonry Cleaner	1:3	98 %	98 %	98 %
“Smooth- Face MWA Sandstone”				
Product	Dilution	3 day	7 day	14 day
Sure Klean® Custom Masonry Cleaner	1:2	95 %	98 %	98 %
Sure Klean® Custom Masonry Cleaner	1:4	98 %	98 %	98 %
Sure Klean® Custom Masonry Cleaner	1:6	100 %	98 %	98 %
Sure Klean® Burnished Custom Masonry Cleaner	1:2	98 %	98 %	98 %
Sure Klean® Burnished Custom Masonry Cleaner	1:3	98 %	98 %	98 %
“Smooth- Face Bond Beam MWA Khaki”				
Product	Dilution	3 day	7 day	14 day
Sure Klean® Custom Masonry Cleaner	1:2	98 %	98 %	98 %
Sure Klean® Custom Masonry Cleaner	1:4	95 %	98 %	98 %
Sure Klean® Custom Masonry Cleaner	1:6	95 %	95 %	95 %
Sure Klean® Burnished Custom Masonry Cleaner	1:2	95 %	95 %	95 %
Sure Klean® Burnished Custom Masonry Cleaner	1:3	95 %	95 %	95 %
“Smooth- Face MWA Bordeaux”				
Product	Dilution	3 day	7 day	14 day
Sure Klean® Custom Masonry Cleaner	1:2	98 %	95 %	98 %
Sure Klean® Custom Masonry Cleaner	1:4	95 %	98 %	98 %
Sure Klean® Custom Masonry Cleaner	1:6	100 %	98 %	95 %
Sure Klean® Burnished Custom Masonry Cleaner	1:2	98 %	95 %	98 %
Sure Klean® Burnished Custom Masonry Cleaner	1:3	100 %	95 %	100 %

Test Results – Color Uniformity

Split-face CMU		“Bond Beam MWA Bordeaux”	
Product	Dilution	Aggregate Exposure	Surface Pigment Alteration/Removal
Sure Klean® Custom Masonry Cleaner	1:2	*	*
Sure Klean® Custom Masonry Cleaner	1:4	*	*
Sure Klean® Custom Masonry Cleaner	1:6	*	*
Sure Klean® Burnished Custom Masonry Cleaner	1:2	*	*
Sure Klean® Burnished Custom Masonry Cleaner	1:3	*	*
Split-face CMU		“MWA Khaki”	
Product	Dilution	Aggregate Exposure	Surface Pigment Alteration/Removal
Sure Klean® Custom Masonry Cleaner	1:2	4	4
Sure Klean® Custom Masonry Cleaner	1:4	4	4
Sure Klean® Custom Masonry Cleaner	1:6	4	4
Sure Klean® Burnished Custom Masonry Cleaner	1:2	4	4
Sure Klean® Burnished Custom Masonry Cleaner	1:3	4	4
Split-face CMU		“MWA Natural”	
Product	Dilution	Aggregate Exposure	Surface Pigment Alteration/Removal
Sure Klean® Custom Masonry Cleaner	1:2	4	4
Sure Klean® Custom Masonry Cleaner	1:4	4	4
Sure Klean® Custom Masonry Cleaner	1:6	4	4
Sure Klean® Burnished Custom Masonry Cleaner	1:2	4	4
Sure Klean® Burnished Custom Masonry Cleaner	1:3	4	4

* - Color Uniformity was not evaluated due to the heavy amount of efflorescence on the surface. See page 18 for photograph.

Scale used for reporting results of both categories:

0 – **Worst** match to through-body

1 – **Poor** match to through-body

2 – **Fair** match to through-body

3 – **Good** match to through-body

4 – **Best** match to through-body

Test Results – Color Uniformity

Smooth-face CMU		“MWA Charcoal”	
Product	Dilution	Aggregate Exposure	Surface Pigment Alteration/Removal
Sure Klean® Custom Masonry Cleaner	1:2	0	2
Sure Klean® Custom Masonry Cleaner	1:4	0	1
Sure Klean® Custom Masonry Cleaner	1:6	1	3
Sure Klean® Burnished Custom Masonry Cleaner	1:2	4	4
Sure Klean® Burnished Custom Masonry Cleaner	1:3	4	4
Smooth-face CMU		“MWA Natural”	
Product	Dilution	Aggregate Exposure	Surface Pigment Alteration/Removal
Sure Klean® Custom Masonry Cleaner	1:2	0	4
Sure Klean® Custom Masonry Cleaner	1:4	0	4
Sure Klean® Custom Masonry Cleaner	1:6	1	4
Sure Klean® Burnished Custom Masonry Cleaner	1:2	3	4
Sure Klean® Burnished Custom Masonry Cleaner	1:3	2	4
Smooth-face CMU		“MWA Sandstone”	
Product	Dilution	Aggregate Exposure	Surface Pigment Alteration/Removal
Sure Klean® Custom Masonry Cleaner	1:2	2	4
Sure Klean® Custom Masonry Cleaner	1:4	3	4
Sure Klean® Custom Masonry Cleaner	1:6	3	4
Sure Klean® Burnished Custom Masonry Cleaner	1:2	4	4
Sure Klean® Burnished Custom Masonry Cleaner	1:3	4	4
Smooth-face CMU		“Bond Beam MWA Khaki”	
Product	Dilution	Aggregate Exposure	Surface Pigment Alteration/Removal
Sure Klean® Custom Masonry Cleaner	1:2	2	4
Sure Klean® Custom Masonry Cleaner	1:4	3	4
Sure Klean® Custom Masonry Cleaner	1:6	3	4
Sure Klean® Burnished Custom Masonry Cleaner	1:2	4	4
Sure Klean® Burnished Custom Masonry Cleaner	1:3	4	4
Smooth-face CMU		“MWA Bordeaux”	
Product	Dilution	Aggregate Exposure	Surface Pigment Alteration/Removal
Sure Klean® Custom Masonry Cleaner	1:2	2	2
Sure Klean® Custom Masonry Cleaner	1:4	0	1
Sure Klean® Custom Masonry Cleaner	1:6	0	2
Sure Klean® Burnished Custom Masonry Cleaner	1:2	3	4
Sure Klean® Burnished Custom Masonry Cleaner	1:3	3	4

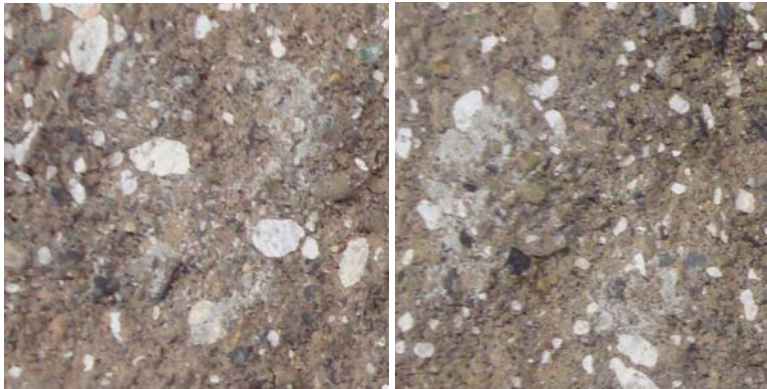
Scale used for reporting results of both categories:

- 0 – **Worst** match to uncleaned surface 3 – **Good** match to uncleaned surface
 1 – **Poor** match to uncleaned surface 4 – **Best** match to uncleaned surface
 2 – **Fair** match to uncleaned surface

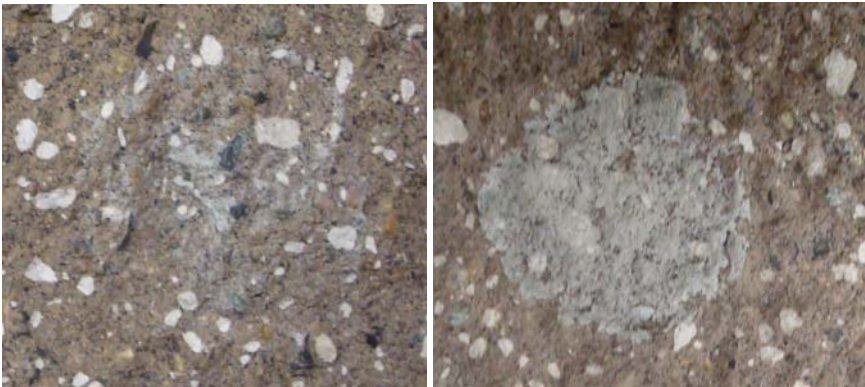
Photographs – New Construction Cleaning

“Split-Face MWA Khaki”; Type S Mortar

3 Day Cleaning



Sure Klean [®] Custom Masonry Cleaner (1:2)	Sure Klean [®] Custom Masonry Cleaner (1:4)
--	--

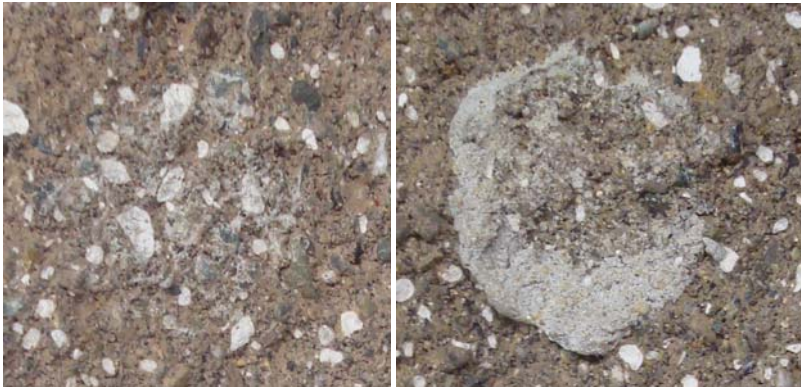


Sure Klean [®] Custom Masonry Cleaner (1:6)	Uncleaned Surface
--	-------------------

Photographs – New Construction Cleaning

“Split-Face MWA Khaki”; Type S Mortar

7 Day Cleaning



Sure Klean® Custom Masonry Cleaner (1:2)	Sure Klean® Custom Masonry Cleaner (1:4)
--	--

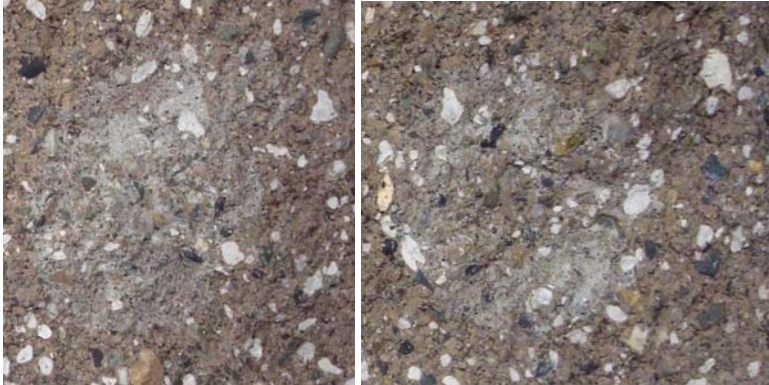


Sure Klean® Custom Masonry Cleaner (1:6)	Uncleaned Surface
--	-------------------

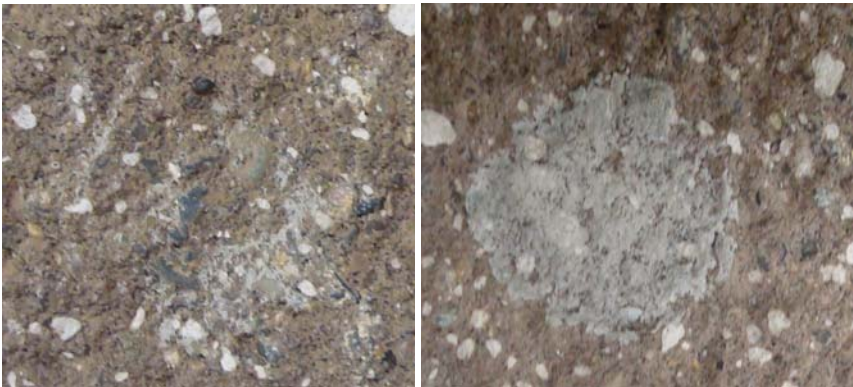
Photographs – New Construction Cleaning

“Split-Face MWA Khaki”; Type S Mortar

14 Day Cleaning



Sure Klean [®] Custom Masonry Cleaner (1:2)	Sure Klean [®] Custom Masonry Cleaner (1:4)
--	--

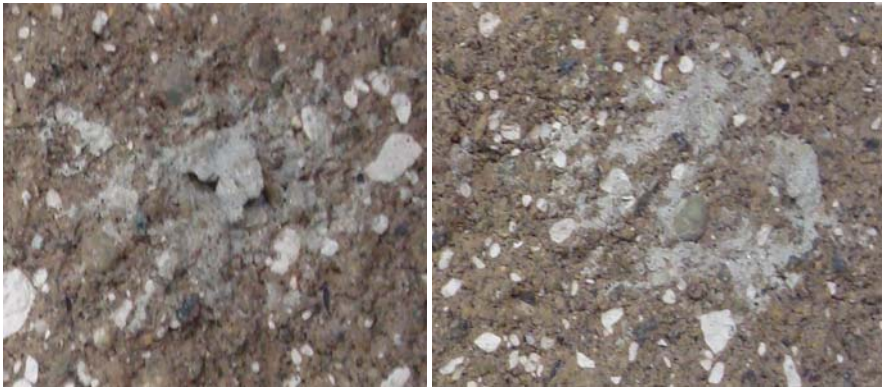


Sure Klean [®] Custom Masonry Cleaner (1:6)	Uncleaned Surface
--	-------------------

Photographs – New Construction Cleaning

“Split-Face MWA Khaki”; Type S Mortar

3 Day Cleaning



Sure Klean® Burnished Custom Masonry Cleaner (1:2)	Sure Klean® Burnished Custom Masonry Cleaner (1:3)
---	---

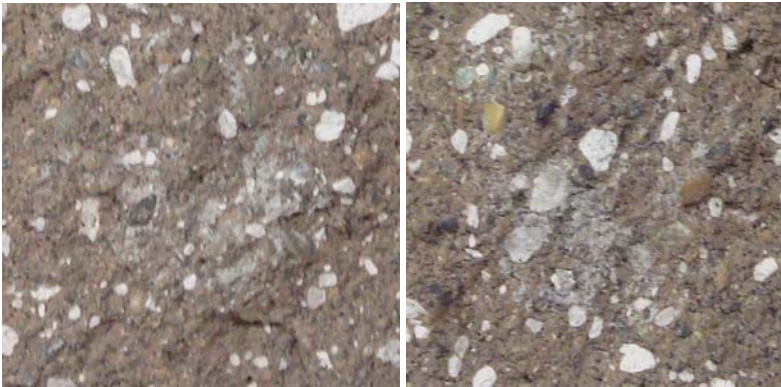


Uncleaned Surface

Photographs – New Construction Cleaning

“Split-Face MWA Khaki”; Type S Mortar

7 Day Cleaning



Sure Klean® Burnished Custom Masonry Cleaner (1:2)	Sure Klean® Burnished Custom Masonry Cleaner (1:3)
---	---

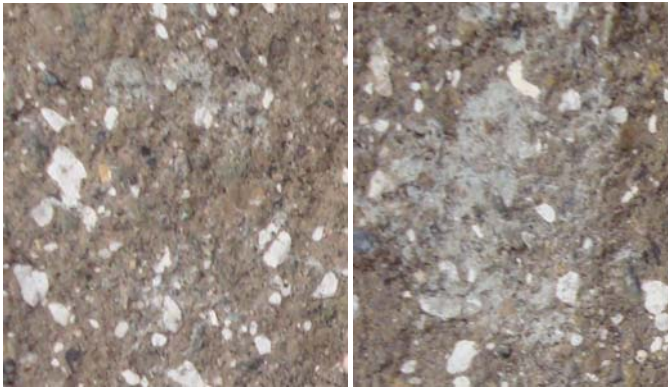


Uncleaned Surface

Photographs – New Construction Cleaning

“Split-Face MWA Khaki”; Type S Mortar

14 Day Cleaning



Sure Klean® Burnished Custom Masonry Cleaner (1:2)	Sure Klean® Burnished Custom Masonry Cleaner (1:3)
---	---



Uncleaned Surface

Photographs – Color Uniformity

“Split-Face MWA Natural”



Sure Klean® Custom Masonry Cleaner (1:2)	Through- body
--	------------------



Sure Klean® Custom Masonry Cleaner (1:4)	Through- body
--	------------------



Sure Klean® Custom Masonry Cleaner (1:6)	Through- body
--	------------------

Photographs – Color Uniformity

“Split-Face MWA Natural”



Sure Klean [®] Burnished Custom Masonry Cleaner (1:2)	Through- body
---	------------------



Sure Klean [®] Burnished Custom Masonry Cleaner (1:3)	Through- body
---	------------------

Photograph – Heavy Efflorescence

“Split-Face Bond Beam MWA Bordeaux”



Conclusions – New Construction Cleaning

Based on the test results, Sure Klean® Custom Masonry Cleaner and/or Sure Klean® Burnished Custom Masonry Cleaner removed significantly amounts of the Type S mortar from the submitted smooth-face and split-face CMU samples even after the mortar remained on the surface of the sample for 14 days.

Note: Normally Sure Klean® Custom Masonry Cleaner is recommended to remove heavy efflorescence from CMU's. However, Custom Masonry Cleaner was not successful in removing the heavy efflorescence from the "Split-Face Bond Beam MWA Bordeaux."

Use higher concentrations and surface agitation to maximize aggregate exposure. Use low concentration and surface agitation to minimize aggregate exposure.

Recommendations – New Construction Cleaning

Recommendations for cleaning for each type of CMU submitted by Basalite Concrete Products, Dupont, WA are provided in the chart below. Recommendations are based on the optimum dilution for complete removal of mortar while providing color uniformity.

Sample	New Construction Cleaning (Type S mortar, 7 day cleaning)
"Smooth-Face MWA Charcoal" "Smooth-Face MWA Natural" "Smooth-Face MWA Bordeaux"	Sure Klean® Burnished Custom Masonry Cleaner (1:3)
"Smooth-Face MWA Sandstone" "Smooth-Face Bond Beam MWA Khaki" "Split-Face Bond Beam MWA Bordeaux" "Split-Face MWA Khaki"	Sure Klean® Custom Masonry Cleaner (1:6) or Sure Klean® Burnished Custom Masonry Cleaner (1:3)
"Split-Face MWA Natural"	Sure Klean® Custom Masonry Cleaner (1:6)

The most appropriate cleaner and dilution should be determined on the specific job-site, and will be dependent primarily on the nature and severity of soiling present at that location.

Apply all products in accordance with the manufacturer's recommendation provided on container labels and product data sheets. On-site testing should be conducted to determine the most appropriate cleaning product and procedures for a particular project. See product literature for additional application and product information.

Protective Water Repellents

The testing described below evaluates the suitability of water repellent treatments.

The surface treatments evaluated were selected for their suitability for application based on the following selection criteria:

1. Weatherproofing properties
 2. Color change
 3. Ease of application
-

Description of Products Evaluated – Protective Water Repellents

Sure Klean® Weather Seal Blok-Guard® & Graffiti Control II – A clear-drying, water-based silicone emulsion for weatherproofing concrete block and other porous masonry materials. Blok-Guard® & Graffiti Control II also protects masonry surfaces from graffiti attacks without altering the natural appearance. Blok-Guard® & Graffiti Control II protects exterior walls exposed to normal weathering. Graffiti removal from treated surfaces is fast and easy using Defacer Eraser® Graffiti Wipe. Blok-Guard® & Graffiti Control II is easy to apply with low-pressure spray, brush or roller.

Sure Klean® Weather Seal Blok-Guard® & Graffiti Control – A clear, solvent-based silicone elastomer formulated to weatherproof concrete block and other porous masonry materials. Blok-Guard® & Graffiti Control protects masonry surfaces from repeated graffiti attacks without altering the natural appearance. Blok-Guard® & Graffiti Control penetrates and fills pores to prevent water penetration through exterior walls exposed to normal weathering. Graffiti removal is fast and easy using Defacer Eraser® Graffiti Wipe. Blok-Guard® & Graffiti Control is easy to apply with low-pressure spray, brush or roller.

Sure Klean® Weather Seal Siloxane WB Concentrate – A concentrated water repellent designed for dilution with fresh water at the job site. This solvent-free blend of silanes and oligomeric alkoxy siloxanes mixes easily with water to produce a penetrating water repellent ideal for application to dense or porous masonry surfaces. An effective alternative to conventional solvent-based silanes or siloxanes, Siloxane WB penetrates and chemically bonds deep within the masonry substrate to provide long-lasting protection against water-related staining or deterioration. Will not darken, produce a surface film or impair the natural breathing characteristics of treated surfaces.

Sample Preparation – Protective Water Repellents

The submitted samples were allowed to dry for 24 hours prior to treatment. All of the products were applied by brush in accordance with the current PROSOCO, Inc. Product Data Sheet application instructions. All treatments were allowed to cure for at least 72 hours prior to testing.

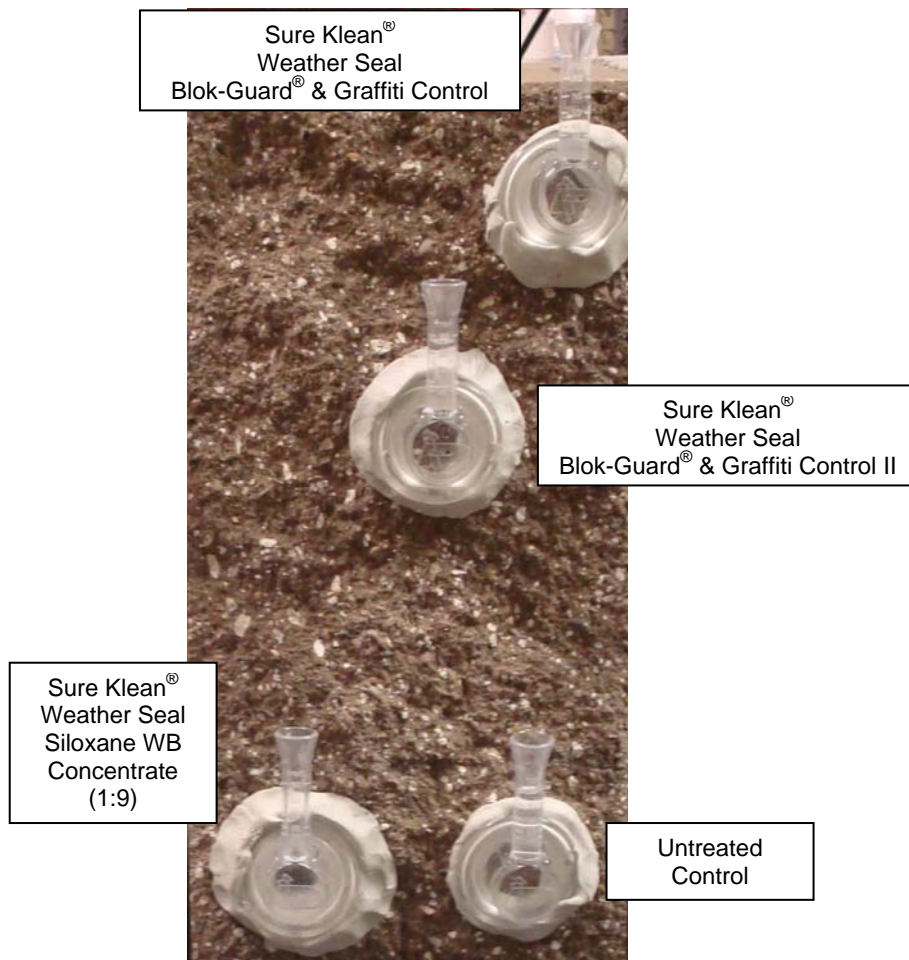
Test Methods – Protective Water Repellents

Water Absorption Tube Test: RILEM II.4, 60 mph, 20 Minutes

The water absorption tube test simulating wind driven rain conditions was performed. This test simulates 60 mile per hour wind driven rain conditions for a period of 20 minutes. See Technical Services TECH Note RILEM Tube Test Procedures.

Test Results – Protective Water Repellents**Water Absorption Tube Test: RILEM II.4, 60 mph, 20 Minutes****Results**

“Smooth-Face MWA Charcoal”	
Untreated Control	> 40 mph
Sure Klean® Weather Seal Blok-Guard® & Graffiti Control II	60 mph
Sure Klean® Weather Seal Blok-Guard® & Graffiti Control	60 mph
Sure Klean® Weather Seal Siloxane WB Concentrate	60 mph
“Smooth-Face MWA Natural”	
Untreated Control	> 40 mph
Sure Klean® Weather Seal Blok-Guard® & Graffiti Control II	59 mph
Sure Klean® Weather Seal Blok-Guard® & Graffiti Control	59 mph
Sure Klean® Weather Seal Siloxane WB Concentrate	52 mph
“Smooth-Face MWA Sandstone”	
Untreated Control	58 mph
Sure Klean® Weather Seal Blok-Guard® & Graffiti Control II	60 mph
Sure Klean® Weather Seal Blok-Guard® & Graffiti Control	59 mph
Sure Klean® Weather Seal Siloxane WB Concentrate	59 mph
“Smooth-Face MWA Bond Beam Khaki”	
Untreated Control	> 40 mph
Sure Klean® Weather Seal Blok-Guard® & Graffiti Control II	60 mph
Sure Klean® Weather Seal Blok-Guard® & Graffiti Control	60 mph
Sure Klean® Weather Seal Siloxane WB Concentrate	58 mph
“Smooth-Face MWA Bond Beam Bordeaux”	
Untreated Control	> 40 mph
Sure Klean® Weather Seal Blok-Guard® & Graffiti Control II	57 mph
Sure Klean® Weather Seal Blok-Guard® & Graffiti Control	59 mph
Sure Klean® Weather Seal Siloxane WB Concentrate	57 mph
“Split-Face MWA Bordeaux”	
Untreated Control	60 mph
Sure Klean® Weather Seal Blok-Guard® & Graffiti Control II	60 mph
Sure Klean® Weather Seal Blok-Guard® & Graffiti Control	60 mph
Sure Klean® Weather Seal Siloxane WB Concentrate	60 mph
“Split-Face MWA Khaki”	
Untreated Control	> 40 mph
Sure Klean® Weather Seal Blok-Guard® & Graffiti Control II	60 mph
Sure Klean® Weather Seal Blok-Guard® & Graffiti Control	59 mph
Sure Klean® Weather Seal Siloxane WB Concentrate	> 59 mph
“Split-Face MWA Natural”	
Untreated Control	> 40 mph
Sure Klean® Weather Seal Blok-Guard® & Graffiti Control II	60 mph
Sure Klean® Weather Seal Blok-Guard® & Graffiti Control	57 mph
Sure Klean® Weather Seal Siloxane WB Concentrate	59 mph

Photographs – Protective Water Repellents**“Split-Face MWA Khaki”; RILEM II.4, 60 mph, 20 Minutes**

Conclusions – Protective Water Repellents

Based upon laboratory evaluations, at least two of the products tested provided excellent water repellency to the submitted samples.

Recommendations – Protective Water Repellents

Recommendations for water repellency for each CMU submitted by Basalite Concrete Products, Dupont, WA are provided in the chart below. Recommendations are based on the treatment that proved most effective and can provide water repellency on all types submitted.

Sample	Protective Water Repellents
"Smooth-Face MWA Charcoal" "Smooth-Face MWA Sandstone" "Smooth-Face Bond Beam MWA Khaki" "Smooth-Face MWA Bordeaux" "Split-Face Bond Beam MWA Bordeaux" "Split-Face MWA Khaki" "Split-Face MWA Natural"	* Sure Klean® Weather Seal Blok-Guard® & Graffiti Control or Sure Klean® Weather Seal Blok-Guard® & Graffiti Control II or Sure Klean® Weather Seal Siloxane WB Concentrate
"Smooth-Face MWA Natural"	* Sure Klean® Weather Seal Blok-Guard® & Graffiti Control or Sure Klean® Weather Seal Blok-Guard® & Graffiti Control II

* **NOTE:** Sure Klean® Weather Seal Blok-Guard® & Graffiti Control is manufactured and marketed in compliance with VOC regulations. This product may not be suitable for sale in states and districts with more restrictive regulations.

Apply all products in accordance with the manufacturer's recommendation provided on container labels and product data sheets. On-site testing should be conducted to determine the most appropriate water repellent product and procedures for a particular project. See product literature for additional application and product information.

Graffiti Control

This evaluation compares the effectiveness of graffiti control treatments in preventing staining of enamel spray paint and permanent markers.

Description of Products Evaluated – Graffiti Control

Graffiti Control Treatments

Sure Klean® Weather Seal Blok-Guard® & Graffiti Control – A clear, solvent-based silicone elastomer formulated to weatherproof concrete block and other porous masonry materials. Blok-Guard® & Graffiti Control protects masonry surfaces from repeated graffiti attacks without altering the natural appearance. Blok-Guard® & Graffiti Control penetrates and fills pores to prevent water penetration through exterior walls exposed to normal weathering. Graffiti removal is fast and easy using Defacer Eraser® Graffiti Wipe. Blok-Guard® & Graffiti Control is easy to apply with low-pressure spray, brush or roller.

Sure Klean® Weather Seal Blok-Guard® & Graffiti Control II – A clear-drying, water-based silicone emulsion for weatherproofing concrete block and other porous masonry materials. Blok-Guard® & Graffiti Control II also protects masonry surfaces from graffiti attacks without altering the natural appearance. Blok-Guard® & Graffiti Control II protects exterior walls exposed to normal weathering. Graffiti removal from treated surfaces is fast and easy using Defacer Eraser® Graffiti Wipe. Blok-Guard® & Graffiti Control II is easy to apply with low-pressure spray, brush or roller.

Products Evaluated for Graffiti Removal

Enviro Klean® SafStrip® 8 – Enviro Klean® 8 is a neutral-pH stripping compound for nearly any hard surface – masonry, concrete, wood or metal. It bears the Enviro Klean® brand because it removes most high-strength paints and clear coats without the methylene chloride or methanol found in traditional solvent paint strippers. Use SafStrip® 8 to break the bond of the toughest oil-based “alkyd” paints, acrylics, lacquers and clear sealers. It also removes graffiti media such as spray paint and “magic” marker. SafStrip® 8’s gel-like consistency makes it hard to spill and easy to apply. It immediately emulsifies in water.

Sure Klean® Fast Acting Stripper – A thixotropic stripping compound formulated specifically for removal of high strength paints and coatings such as epoxies, polyurethanes, and floor enamels. Additionally, Fast Acting Stripper dissolves most spray paints, marking pens, lacquers and other graffiti.

Defacer Eraser® Graffiti Wipe – An easy-to-use graffiti remover that does not contain methanol, methylene chloride or other halogenated solvents prohibited on many projects. Graffiti Wipe removes a variety of graffiti stains from most smooth masonry, split-face concrete block, wood and metal surfaces.

Graffiti Agents

Interior/Exterior Spray Paint (Red)
Permanent Marker (Green)
Permanent Marker (Red)
Permanent Marker (Black)

Sample Preparation – Graffiti Control

Sections of the CMU’s were treated with Sure Klean® Weather Seal Blok-Guard® & Graffiti Control and Sure Klean® Weather Seal Blok-Guard® & Graffiti Control II in accordance with the current PROSOCO, Inc. Product Data Sheet application instructions and allowed to cure for at least one day. At the end of the cure period, a visual adverse effects evaluation was made and then the graffiti agents were applied to the substrates.

Spray paint and markers were applied as graffiti agents to all treated surfaces no sooner than one day following application of Sure Klean® Weather Seal Blok-Guard® & Graffiti Control and Sure Klean® Weather Seal Blok-Guard® & Graffiti Control II. Removal of the graffiti agents was attempted 24 hours after application of the graffiti agents, using Defacer Eraser® Graffiti Wipe, Sure Klean® Fast Acting Stripper, and Enviro Klean® SafStrip® 8.

Test Method – Graffiti Control

Chemical cleaners were evaluated using the following procedure:

1. Apply the product to a dry surface, soiled with graffiti.
2. Allow appropriate dwell time:
 Enviro Klean® SafStrip® 830 minutes
 Sure Klean® Fast Acting Stripper20 minutes
 Defacer Eraser® Graffiti Wipe5 minutes
3. Pressure rinse thoroughly until water runs clear. *
4. Allow the surface to dry thoroughly and visually examine to determine effectiveness.

***Pressure Rinsing Equipment** – Masonry washing equipment generating approximately 700-800 psi with a water flow rate of 8 gallons per minute delivered through a 45 degree fan spray tip was used for rinsing.

Test Results – Graffiti Control

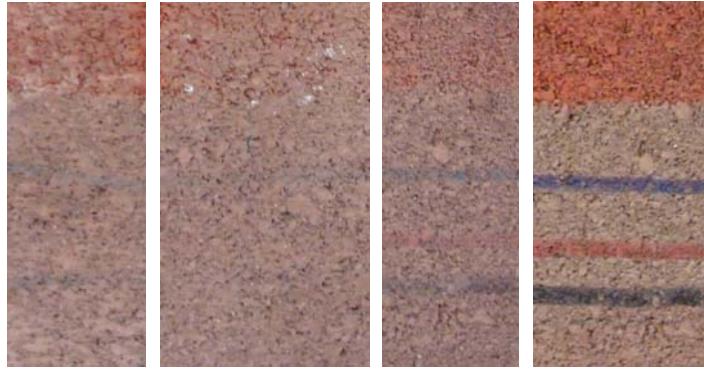
“Smooth-Face MWA Charcoal”					
Untreated Control	Red Paint	Black Marker	Blue Marker	Red Marker	% Avg. Removal
Enviro Klean® SafStrip® 8	65 %	65 %	60 %	65 %	64 %
Sure Klean® Fast Acting Stripper	70 %	65 %	70 %	65 %	68 %
Defacer Eraser® Graffiti Wipe	70 %	60 %	60 %	60 %	63 %
Sure Klean® Weather Seal Blok-Guard® & Graffiti Control	Red Paint	Black Marker	Blue Marker	Red Marker	% Avg. Removal
Enviro Klean® SafStrip® 8	70 %	85 %	85 %	80 %	80 %
Sure Klean® Fast Acting Stripper	70 %	90 %	90 %	90 %	85 %
Defacer Eraser® Graffiti Wipe	75 %	90 %	85 %	80 %	83 %
Sure Klean® Weather Seal Blok-Guard® & Graffiti Control II	Red Paint	Black Marker	Blue Marker	Red Marker	% Avg. Removal
Enviro Klean® SafStrip® 8	60 %	80 %	75 %	80 %	79 %
Sure Klean® Fast Acting Stripper	75 %	75 %	75 %	75 %	75 %
Defacer Eraser® Graffiti Wipe	65 %	90 %	70 %	85 %	78 %
“Smooth-Face MWA Natural”					
Untreated Control	Red Paint	Black Marker	Blue Marker	Red Marker	% Avg. Removal
Enviro Klean® SafStrip® 8	70 %	60 %	50 %	60 %	60 %
Sure Klean® Fast Acting Stripper	70 %	75 %	60 %	65 %	68 %
Defacer Eraser® Graffiti Wipe	60 %	60 %	55 %	65 %	60 %
Sure Klean® Weather Seal Blok-Guard® & Graffiti Control	Red Paint	Black Marker	Blue Marker	Red Marker	% Avg. Removal
Enviro Klean® SafStrip® 8	75 %	75 %	65 %	70 %	71 %
Sure Klean® Fast Acting Stripper	75 %	80 %	75 %	80 %	78 %
Defacer Eraser® Graffiti Wipe	70 %	75 %	70 %	75 %	73 %
Sure Klean® Weather Seal Blok-Guard® & Graffiti Control II	Red Paint	Black Marker	Blue Marker	Red Marker	% Avg. Removal
Enviro Klean® SafStrip® 8	70 %	65 %	50 %	60 %	61 %
Sure Klean® Fast Acting Stripper	70 %	75 %	65 %	70 %	70 %
Defacer Eraser® Graffiti Wipe	65 %	70 %	60 %	65 %	65 %

Test Results – Graffiti Control

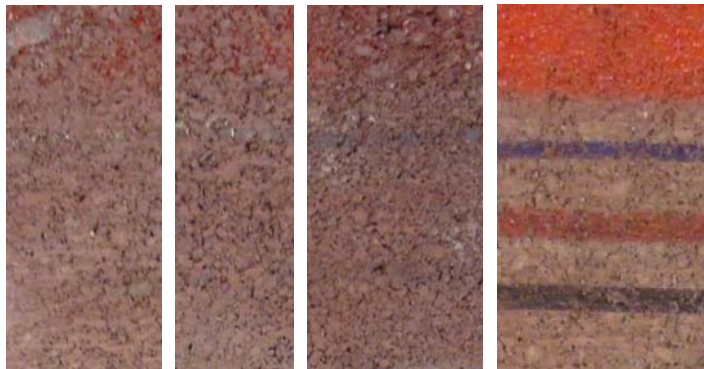
“Smooth-Face MWA Sandstone”					
Untreated Control	Red Paint	Black Marker	Blue Marker	Red Marker	% Avg. Removal
Enviro Klean® SafStrip® 8	75 %	40 %	40 %	40 %	48 %
Sure Klean® Fast Acting Stripper	90 %	60 %	60 %	60 %	68 %
Defacer Eraser® Graffiti Wipe	70 %	20 %	20 %	20 %	33 %
Sure Klean® Weather Seal Blok-Guard® & Graffiti Control	Red Paint	Black Marker	Blue Marker	Red Marker	% Avg. Removal
Enviro Klean® SafStrip® 8	80 %	85 %	85 %	85 %	84 %
Sure Klean® Fast Acting Stripper	80 %	90 %	90 %	90 %	88 %
Defacer Eraser® Graffiti Wipe	70 %	85 %	85 %	85 %	81 %
Sure Klean® Weather Seal Blok-Guard® & Graffiti Control II	Red Paint	Black Marker	Blue Marker	Red Marker	% Avg. Removal
Enviro Klean® SafStrip® 8	75 %	50 %	50 %	50 %	56 %
Sure Klean® Fast Acting Stripper	85 %	80 %	80 %	80 %	81 %
Defacer Eraser® Graffiti Wipe	70 %	75 %	70 %	70 %	71 %
“Smooth-Face Bond Beam MWA Khaki”					
Untreated Control	Red Paint	Black Marker	Blue Marker	Red Marker	% Avg. Removal
Enviro Klean® SafStrip® 8	80 %	75 %	65 %	65 %	71 %
Sure Klean® Fast Acting Stripper	75 %	75 %	75 %	75 %	75 %
Defacer Eraser® Graffiti Wipe	75 %	80 %	75 %	50%	70 %
Sure Klean® Weather Seal Blok-Guard® & Graffiti Control	Red Paint	Black Marker	Blue Marker	Red Marker	% Avg. Removal
Enviro Klean® SafStrip® 8	70 %	65 %	50 %	60 %	61 %
Sure Klean® Fast Acting Stripper	75 %	75 %	65 %	65 %	70 %
Defacer Eraser® Graffiti Wipe	75 %	65 %	50 %	60 %	63 %
Sure Klean® Weather Seal Blok-Guard® & Graffiti Control II	Red Paint	Black Marker	Blue Marker	Red Marker	% Avg. Removal
Enviro Klean® SafStrip® 8	75 %	65 %	50 %	60 %	63 %
Sure Klean® Fast Acting Stripper	60 %	75 %	65 %	65 %	66 %
Defacer Eraser® Graffiti Wipe	60 %	30 %	20 %	20 %	33 %
“Smooth-Face Bond Beam MWA Bordeaux”					
Untreated Control	Red Paint	Black Marker	Blue Marker	Red Marker	% Avg. Removal
Enviro Klean® SafStrip® 8	60 %	40 %	20 %	45 %	41 %
Sure Klean® Fast Acting Stripper	70 %	70 %	40 %	70 %	63 %
Defacer Eraser® Graffiti Wipe	65 %	30 %	20 %	20 %	34 %
Sure Klean® Weather Seal Blok-Guard® & Graffiti Control	Red Paint	Black Marker	Blue Marker	Red Marker	% Avg. Removal
Enviro Klean® SafStrip® 8	60 %	70 %	60 %	85 %	69 %
Sure Klean® Fast Acting Stripper	85 %	95 %	70 %	90 %	85 %
Defacer Eraser® Graffiti Wipe	70 %	40 %	40 %	40 %	48 %
Sure Klean® Weather Seal Blok-Guard® & Graffiti Control II	Red Paint	Black Marker	Blue Marker	Red Marker	% Avg. Removal
Enviro Klean® SafStrip® 8	70 %	90 %	90 %	90 %	63 %
Sure Klean® Fast Acting Stripper	70 %	90 %	85 %	85 %	83 %
Defacer Eraser® Graffiti Wipe	75 %	75%	70 %	75 %	74 %

Test Results – Graffiti Control

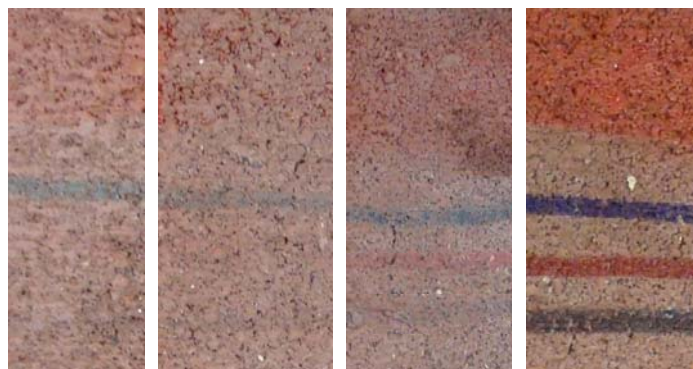
“Split-Face MWA Bordeaux”					
Untreated Control	Red Paint	Black Marker	Blue Marker	Red Marker	% Avg. Removal
Enviro Klean® SafStrip® 8	60 %	70 %	60 %	70 %	65 %
Sure Klean® Fast Acting Stripper	70 %	85 %	70 %	80 %	76 %
Defacer Eraser® Graffiti Wipe	50%	55 %	40 %	50 %	49 %
Sure Klean® Weather Seal Blok-Guard® & Graffiti Control	Red Paint	Black Marker	Blue Marker	Red Marker	% Avg. Removal
Enviro Klean® SafStrip® 8	60 %	85 %	70 %	85 %	75 %
Sure Klean® Fast Acting Stripper	55 %	90 %	85 %	90 %	80 %
Defacer Eraser® Graffiti Wipe	50 %	85 %	70 %	90 %	74 %
Sure Klean® Weather Seal Blok-Guard® & Graffiti Control II	Red Paint	Black Marker	Blue Marker	Red Marker	% Avg. Removal
Enviro Klean® SafStrip® 8	40 %	95 %	95 %	95 %	81 %
Sure Klean® Fast Acting Stripper	40 %	100 %	100 %	100 %	85 %
Defacer Eraser® Graffiti Wipe	80 %	85 %	90 %	90 %	86 %
“Split-Face MWA Khaki”					
Untreated Control	Red Paint	Black Marker	Blue Marker	Red Marker	% Avg. Removal
Enviro Klean® SafStrip® 8	60 %	20 %	20 %	20 %	30 %
Sure Klean® Fast Acting Stripper	75 %	80 %	60 %	60 %	69 %
Defacer Eraser® Graffiti Wipe	60 %	20 %	20 %	20 %	30 %
Sure Klean® Weather Seal Blok-Guard® & Graffiti Control	Red Paint	Black Marker	Blue Marker	Red Marker	% Avg. Removal
Enviro Klean® SafStrip® 8	60 %	85 %	80 %	75 %	75 %
Sure Klean® Fast Acting Stripper	65 %	85 %	75 %	85 %	75 %
Defacer Eraser® Graffiti Wipe	60 %	70 %	60 %	90 %	70 %
Sure Klean® Weather Seal Blok-Guard® & Graffiti Control II	Red Paint	Black Marker	Blue Marker	Red Marker	% Avg. Removal
Enviro Klean® SafStrip® 8	50 %	70 %	40 %	60 %	55 %
Sure Klean® Fast Acting Stripper	50 %	90 %	65 %	85 %	73 %
Defacer Eraser® Graffiti Wipe	40 %	50 %	55 %	40 %	46 %
“Split-Face MWA Natural”					
Untreated Control	Red Paint	Black Marker	Blue Marker	Red Marker	% Avg. Removal
Enviro Klean® SafStrip® 8	65 %	40 %	40 %	65 %	52 %
Sure Klean® Fast Acting Stripper	60 %	50 %	40 %	40 %	48 %
Defacer Eraser® Graffiti Wipe	50 %	20 %	40 %	40 %	38 %
Sure Klean® Weather Seal Blok-Guard® & Graffiti Control	Red Paint	Black Marker	Blue Marker	Red Marker	% Avg. Removal
Enviro Klean® SafStrip® 8	50 %	80 %	85 %	75 %	73 %
Sure Klean® Fast Acting Stripper	40 %	85 %	85 %	75 %	71 %
Defacer Eraser® Graffiti Wipe	50 %	80 %	85 %	75 %	73 %
Sure Klean® Weather Seal Blok-Guard® & Graffiti Control II	Red Paint	Black Marker	Blue Marker	Red Marker	% Avg. Removal
Sure Klean® Fast Acting Stripper	70 %	50 %	50 %	50 %	55 %
Enviro Klean® SafStrip® 8	60 %	50 %	40 %	40 %	48 %
Defacer Eraser® Graffiti Wipe	50 %	40 %	50 %	65 %	51 %

Photographs – Graffiti Control**“Smooth-Face MWA Bordeaux”****Untreated Control**

Sure Klean® Fast Acting Stripper	Enviro Klean® SafStrip® 8	Defacer Eraser® Graffiti Wipe	Before Graffiti Removal
--	------------------------------	-------------------------------------	----------------------------

Sure Klean® Weather Seal Blok-Guard® & Graffiti Control

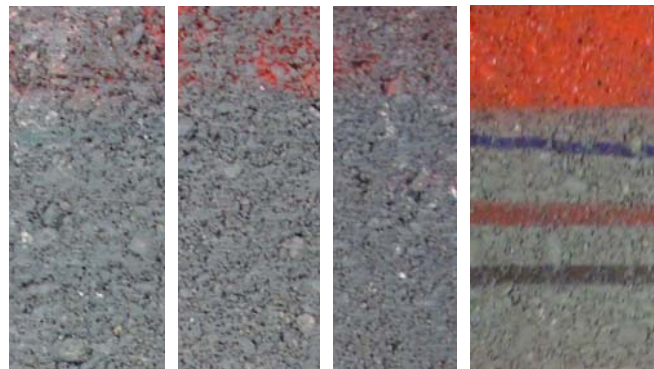
Sure Klean® Fast Acting Stripper	Enviro Klean® SafStrip® 8	Defacer Eraser® Graffiti Wipe	Before Graffiti Removal
--	------------------------------	-------------------------------------	----------------------------

Sure Klean® Weather Seal Blok-Guard® & Graffiti Control II

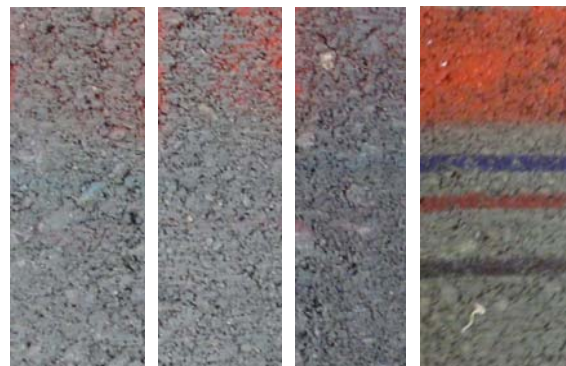
Sure Klean® Fast Acting Stripper	Enviro Klean® SafStrip® 8	Defacer Eraser® Graffiti Wipe	Before Graffiti Removal
--	------------------------------	-------------------------------------	----------------------------

Photographs – Graffiti Control**“Smooth-Face MWA Charcoal”****Untreated Control**

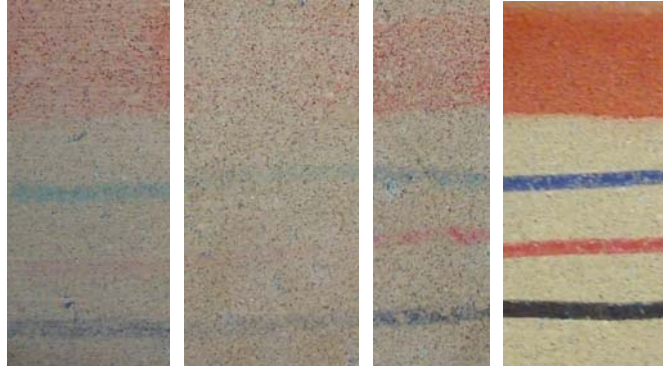
Sure Klean® Fast Acting Stripper	Enviro Klean® SafStrip® 8	Defacer Eraser® Graffiti Wipe	Before Graffiti Removal
--	------------------------------	-------------------------------------	----------------------------

Sure Klean® Weather Seal Blok-Guard® & Graffiti Control

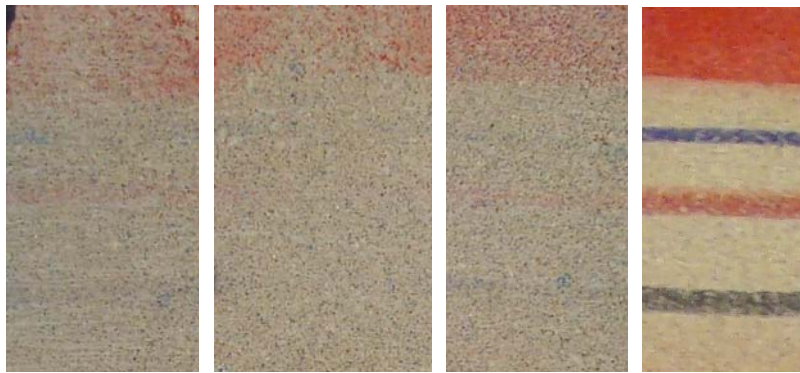
Sure Klean® Fast Acting Stripper	Enviro Klean® SafStrip® 8	Defacer Eraser® Graffiti Wipe	Before Graffiti Removal
--	---------------------------------	-------------------------------------	----------------------------

Sure Klean® Weather Seal Blok-Guard® & Graffiti Control II

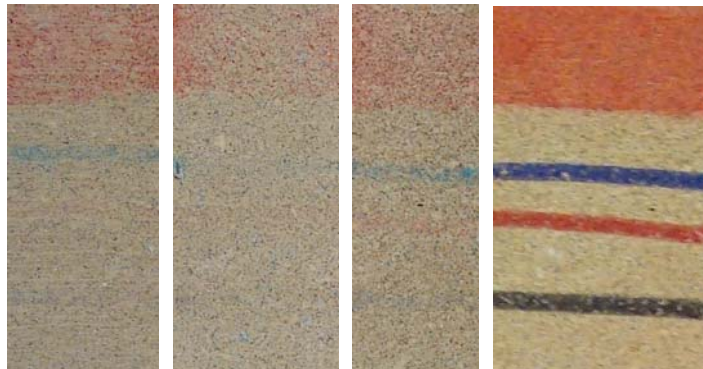
Sure Klean® Fast Acting Stripper	Enviro Klean® SafStrip® 8	Defacer Eraser® Graffiti Wipe	Before Graffiti Removal
--	---------------------------------	-------------------------------------	-------------------------------

Photographs – Graffiti Control**“Smooth-Face MWA Sandstone”****Untreated Control**

Sure Klean® Fast Acting Stripper	Enviro Klean® SafStrip® 8	Defacer Eraser® Graffiti Wipe	Before Graffiti Removal
--	------------------------------	-------------------------------------	----------------------------

Sure Klean® Weather Seal Blok-Guard® & Graffiti Control

Sure Klean® Fast Acting Stripper	Enviro Klean® SafStrip® 8	Defacer Eraser® Graffiti Wipe	Before Graffiti Removal
--	------------------------------	----------------------------------	----------------------------

Sure Klean® Weather Seal Blok-Guard® & Graffiti Control II

Sure Klean® Fast Acting Stripper	Enviro Klean® SafStrip® 8	Defacer Eraser® Graffiti Wipe	Before Graffiti Removal
--	------------------------------	-------------------------------------	----------------------------

Conclusions – Graffiti Control

Based upon laboratory evaluations, graffiti removal was improved when the submitted samples were treated with Sure Klean® Weather Seal Blok-Guard® & Graffiti Control and Sure Klean® Weather Seal Blok-Guard® & Graffiti Control II prior to graffiti application. Both graffiti repellents were effective in preventing the staining and penetration of the red enamel spray paint and permanent markers.

Recommendations – Graffiti Control

Recommendations for graffiti control treatment for each CMU submitted by Basalite Concrete Products, Dupont, WA are provided in the chart below. Recommendations are based on the treatment that proved most effective for providing graffiti repellency and the product that was most effective at removing the graffiti on all types submitted.

Sample	Graffiti Repellents	Graffiti Removers
“Smooth-Face MWA Charcoal” “Split-Face MWA Bordeaux”	* Sure Klean® Weather Seal Blok-Guard® & Graffiti Control or Sure Klean® Weather Seal Blok-Guard® & Graffiti Control II	Enviro Klean® SafStrip® 8 or Sure Klean® Fast Acting Stripper or Defacer Eraser® Graffiti Wipe
“Smooth-Face MWA Natural” “Split-Face MWA Khaki”	* Sure Klean® Weather Seal Blok-Guard® & Graffiti Control	Enviro Klean® SafStrip® 8 or Sure Klean® Fast Acting Stripper or Defacer Eraser® Graffiti Wipe
	Sure Klean® Weather Seal Blok-Guard® & Graffiti Control II	Sure Klean® Fast Acting Stripper
“Smooth-Face MWA Sandstone”	* Sure Klean® Weather Seal Blok-Guard® & Graffiti Control	Enviro Klean® SafStrip® 8 or Sure Klean® Fast Acting Stripper or Defacer Eraser® Graffiti Wipe
	Sure Klean® Weather Seal Blok-Guard® & Graffiti Control II	Sure Klean® Fast Acting Stripper or Defacer Eraser® Graffiti Wipe
“Smooth-Face Bond Beam MWA Khaki”	* Sure Klean® Weather Seal Blok-Guard® & Graffiti Control	Sure Klean® Fast Acting Stripper

Recommendations – Graffiti Control

Sample	Graffiti Repellents	Graffiti Removers
"Smooth-Face Bond Beam MWA Bordeaux"	* Sure Klean® Weather Seal Blok-Guard® & Graffiti Control	Sure Klean® Fast Acting Stripper
	Sure Klean® Weather Seal Blok-Guard® & Graffiti Control II	Sure Klean® Fast Acting Stripper or Defacer Eraser® Graffiti Wipe
"Split-Face MWA Natural"	* Sure Klean® Weather Seal Blok-Guard® & Graffiti Control	Enviro Klean® SafStrip® 8 or Sure Klean® Fast Acting Stripper or Defacer Eraser® Graffiti Wipe

* **NOTE:** Sure Klean® Weather Seal Blok-Guard® & Graffiti Control is manufactured and marketed in compliance with VOC regulations. This product may not be suitable for sale in states and districts with more restrictive regulations.

Apply all products in accordance with the manufacturer's recommendation provided on container labels and product data sheets. Because the severity of graffiti varies from location to location, on-site testing should be conducted to determine the most appropriate graffiti control product and procedure for a particular project



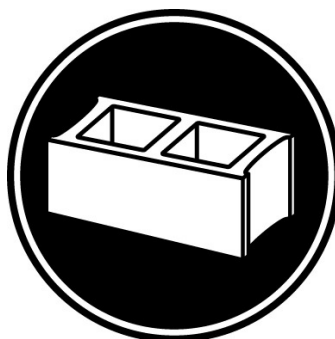
Alia Bober
Project Testing Laboratory Technician



PALLET TAG PROGRAM

Laboratory Report

Basalite Concrete Products
3299 International Pl
Dupont, WA 98327



Project No. 0807-11 PTP

Prepared For:
PROSOCO
SINCE 1939

Prepared By:
AMT Laboratories
March 2009