

## **Table of Contents**

<b>Executive Summary .....</b>	<b>i</b>
<b>Submitted Information .....</b>	<b>1</b>
<b>Introduction .....</b>	<b>1</b>
<b>Purpose of Testing.....</b>	<b>2</b>
Products Evaluated .....	3
<b>Color and Sheen Enhancement Products Evaluated .....</b>	<b>3</b>
<b>New Construction Cleaning .....</b>	<b>4</b>
Description of Products Evaluated – New Construction Cleaning .....	4
Sample Preparation – New Construction Cleaning.....	4
Test Method – New Construction Cleaning .....	4
Test Results – New Construction Cleaning .....	5
Test Results – New Construction Cleaning .....	6
Test Results – Color Uniformity .....	7
Photographs – New Construction Cleaning .....	8
Photographs – New Construction Cleaning .....	9
Photographs – New Construction Cleaning .....	10
Photographs – New Construction Cleaning .....	11
Photographs – New Construction Cleaning .....	12
Photographs – New Construction Cleaning .....	13
Photographs – Color Uniformity .....	14
Recommendations – New Construction Cleaning .....	15
<b>Protective Water Repellents.....</b>	<b>16</b>
Description of Products Evaluated – Protective Water Repellents .....	16
Sample Preparation – Protective Water Repellents.....	16
Test Methods – Protective Water Repellents.....	16
Test Results – Protective Water Repellents .....	17
Photographs – Protective Water Repellents .....	18
Conclusions – Protective Water Repellents .....	19
Recommendations – Protective Water Repellents .....	19
<b>Graffiti Control.....</b>	<b>20</b>
Description of Products Evaluated – Graffiti Control.....	20
Sample Preparation – Graffiti Control .....	20
Test Method – Graffiti Control .....	21
Test Results – Graffiti Control .....	22
Photographs – Graffiti Control.....	23
Key: .....	23
1. Sure Klean® Fast Acting Stripper .....	23
2. Defacer Eraser® Graffiti Wipe .....	23
Recommendations – Graffiti Control .....	24
<b>Color and Sheen Enhancement.....</b>	<b>25</b>
Description of Products Evaluated – Color and Sheen Enhancement .....	25
Test Method – Color and Sheen Enhancement.....	25
Test Results – Color and Sheen Enhancement.....	26
Photographs – Color and Sheen Enhancement .....	27
Recommendations – Color and Sheen Enhancement.....	27
<b>Attachments</b>	
Technical Services TECH Note RILEM Tube Test Procedures	
Product Data literature for all products evaluated	

**Submitted Information**

**For:** Kevin Gwinn  
**cc:** Matt Henderson  
Brian Koenings

**Subject:** Anchor Block Company  
North Saint Paul, MN

**Date:** September 25, 2007

**Project:** 0708-19 PTP

**Samples Submitted:** 2 types of Bravissi™ Sculpted Masonry Veneer

Name	Color	Size	Integral Water Repellant
"Endion Red"	Red	4" x 12" x 24"	DRY-BLOCK®
"Kasota"	Yellow	4" x 8" x 24"	Rheopel®

Submitted by: Kevin Gwinn

**Introduction**

Architectural Materials Testing (AMT) Laboratories is a Boyer Industries company that provides laboratory testing and consulting services for the construction industry. Laboratory testing includes evaluating chemical cleaning products and protective treatments for a variety of new and existing architectural materials.

This report includes descriptions of the PROSOCO, Inc. products and test methods that were used. Following test results and conclusions, the report provides recommendations for the most effective products and procedures.

## **Purpose of Testing**

Two types of Bravissi™ Sculpted Masonry Veneer were submitted for testing to AMT Laboratories by PROSOCO, Inc. to determine the optimum concentration of cleaner for complete removal of mortar and related new construction soiling. The effectiveness of protective water repellents, graffiti control products, and a color/sheen enhancement product suitable for sculpted masonry was also evaluated.

**New Construction Cleaning** – Sure Klean® Custom Masonry Cleaner, Sure Klean® Manufactured Stone Cleaner, and Sure Klean® Vana Trol® were evaluated to determine the optimal concentration of cleaner for removal of laboratory applied mortar which also leaves the external surface looking most like the natural through-body color of the Bravissi™ Sculpted Masonry Veneer.

To simulate new construction soiling all samples were placed on a bench with finished surface facing upward. Hollow cylinders measuring 50 mm in diameter and 75 mm tall were positioned on top of each sample and filled with a wet mixture of Type S or Type N mortar. The wet, mortar-filled cylinder was allowed to remain in contact with the samples for 10 minutes before removal.

Heavy deposits of mortar were removed with dry scraping after 24 hours. Prepared cleaning solutions were then evaluated for their effectiveness in removing residual Type S mortar staining after 3 days, 7 days, and 14 days of curing and Type N mortar staining after 7 days, 14 days, and 21 days of curing.

Color uniformity was evaluated by comparing aggregate exposure and surface pigment alteration/removal of each cleaned surface compared to the natural through-body color of the Bravissi™ Sculpted Masonry Veneer.

Aggregate Exposure is the visual examination comparing aggregate exposure of the interior, through-body section of the CMU to surfaces cleaned with selected product(s) at given dilutions.

Surface Pigment Alteration/Removal is the visual examination comparing the pigmentation of the interior, through-body section of the CMU to surfaces cleaned with selected product(s) at given dilutions.

The following is the scale used for reporting results of both categories:

- |  |                                       |
|--|---------------------------------------|
| 0 – <b>Worst</b> match to through-body | 3 – <b>Good</b> match to through-body |
| 1 – <b>Poor</b> match to through-body  | 4 – <b>Best</b> match to through-body |
| 2 – <b>Fair</b> match to through-body  |                                       |

### **NOTE: When cleaning integrally colored CMUs.**

Integrally colored concrete masonry units (CMUs) frequently have high amounts of pigments concentrated on the surface of the cured concrete unit. Variation of surface pigment concentrations from one CMU to the next creates a blotchy appearance in the completed wall. Allowed to remain on the surface of the CMU, the weakly bound pigment will weather and streak, further detracting from the appearance of the completed CMU wall.

In addition to removing excess mortar and construction related soiling, the goal of any cleaning operation undertaken on an integrally colored CMU should include removal of unnaturally high concentrations of surface pigment. By revealing the natural through-body color on the integrally colored unit, the overall color uniformity and weathering resistance of the completed CMU wall is improved.

**Protective Water Repellents** – Sure Klean® Weather Seal Blok-Guard® & Graffiti Control and Sure Klean® Weather Seal Siloxane WB Concentrate (1:9) were evaluated for their ability to provide water repellency to the submitted samples.

**Graffiti Control** – Sure Klean® Weather Seal Blok-Guard® & Graffiti Control and Sure Klean® Weather Seal Blok-Guard® & Graffiti Control II were evaluated for their ability to control graffiti on the submitted samples. Sure Klean® Fast Acting Stripper and Defacer Eraser® Graffiti Wipe were evaluated for their ability to remove graffiti from the submitted samples.

**Color and Sheen Enhancement** – Paver Kare® Paver Enhancer was evaluated for its ability to provide color and sheen enhancement to the submitted samples.

**Products Evaluated****New Construction Cleaning Products Evaluated**

Sample	Product	Dilution
All Submitted Bravissi™ Sculpted Masonry Veneer	Sure Klean® Manufactured Stone Cleaner	1:2, 1:3
	Sure Klean® Custom Masonry Cleaner	1:2, 1:4, 1:6
	Sure Klean® Vana Trol®	1:6, 1:8

**Protective Water Repellent Products Evaluated**

Sample	Product	Dilution
All Submitted Bravissi™ Sculpted Masonry Veneer	Sure Klean® Weather Seal Blok-Guard® & Graffiti Control	Concentrate
	Sure Klean® Weather Seal Siloxane WB Concentrate	1:9

**Graffiti Control Products Evaluated**

Sample	Product	Dilution
All Submitted Bravissi™ Sculpted Masonry Veneer	Sure Klean® Weather Seal Blok-Guard® & Graffiti Control	Concentrate
	Sure Klean® Weather Seal Blok-Guard® & Graffiti Control II	Concentrate

**Graffiti Removal Products Evaluated**

Sample	Product	Dilution
All Submitted Bravissi™ Sculpted Masonry Veneer	Sure Klean® Fast Acting Stripper	Concentrate
	Defacer Eraser® Graffiti Wipe	Concentrate

**Color and Sheen Enhancement Products Evaluated**

Sample	Product	Dilution
All Submitted Bravissi™ Sculpted Masonry Veneer	Paver Kare® Paver Enhancer	Concentrate

## **New Construction Cleaning**

These cleaning trials were conducted to determine the optimal concentration of cleaner to most efficiently remove Type S and Type N mortar from the submitted samples while providing the best color uniformity when compared to the through-body color of the submitted Bravissi™ Sculpted Masonry Veneer.

### **Description of Products Evaluated – New Construction Cleaning**

**Sure Klean® Manufactured Stone Cleaner** – Removes common construction and atmospheric staining from custom masonry and other architectural concrete surfaces. This general-purpose, non-etching, acidic cleaner removes rust, mud, oil, atmospheric dirt, mortar smears and other stains without altering the surface texture. Manufactured Stone Cleaner adds depth to colors and brightens white matrices and exposed aggregate.

**Sure Klean® Custom Masonry Cleaner** – A general purpose, concentrated acidic cleaner for most custom masonry and colored concrete. Removes concrete splashes, excess mortar, mud, heavy efflorescence and surface soiling, leaving the masonry clean and uniform with no acid burning or streaking. Liquid concentrate for dilution with 2-6 parts water. Apply by brush or low-pressure spray.

**Sure Klean® Vana Trol®** – A concentrated acidic cleaner for new masonry surfaces that are subject to vanadium, manganese and other metallic stains. Use on: gray, brown, white, and most light-colored brick; natural stone; cast stone. Dissolves mortar smears and construction dirt quickly, leaving the masonry clean and uniform with no acid burning or streaking. Liquid concentrate for dilution with 4-10 parts water. Apply by brush or low-pressure spray.

### **Sample Preparation – New Construction Cleaning**

Type S and Type N mortar were prepared in compliance with the manufacturer's instructions, applied to the samples and allowed to cure. Mortar removal was accomplished using chemical assistance and a high-pressure water rinse with pressure rinsing equipment. The removal of Type S masonry mortar was visually evaluated after 3, 7, and 14 days of curing. The removal of Type N masonry mortar was visually evaluated after 7, 14, and 21 days of curing. A visual examination was also made to determine the optimal dilution of the tested cleaners that provides the best color uniformity when compared to the through-body color of the Bravissi™ Sculpted Masonry Veneer.

### **Test Method – New Construction Cleaning**

Chemical cleaners were evaluated using the following procedure:

1. Pre-wet the surface with water.
2. Apply at the appropriate dilutions.
3. Allow appropriate dwell time, as specified.
 

Sure Klean® Manufactured Stone Cleaner .....	3 minutes
Sure Klean® Custom Masonry Cleaner.....	3 minutes
Sure Klean® Vana Trol® .....	3 minutes
4. Reapply the product and moderately agitate with a brush.
5. Pressure rinse thoroughly.\*
6. Allow the sample to dry for at least 18 hours and visually examine.
7. Break the sample in half and compare the through-body surfaces to the cleaned surfaces for the best match.

**\*Pressure Rinsing Equipment** – Masonry washing equipment generating approximately 700-800 psi with a water flow rate of 8 gallons per minute delivered through a 45 degree fan spray tip was used for rinsing.

**Test Results – New Construction Cleaning****Cleaning Effectiveness (% Type S Mortar Removal)**

<b>“Endion Red” Bravissi™ Sculpted Masonry Veneer</b>				
<b>Product</b>	<b>Dilution</b>	<b>3 day</b>	<b>7 day</b>	<b>14 day</b>
Manufactured Stone Cleaner	1:2	90%	90%	85%
Manufactured Stone Cleaner	1:3	90%	90%	85%
Custom Masonry Cleaner	1:2	70%	100%	85%
Custom Masonry Cleaner	1:4	75%	90%	85%
Custom Masonry Cleaner	1:6	85%	95%	85%
Vana Trol®	1:6	70%	75%	75%
Vana Trol®	1:8	75%	85%	75%
<b>“Kasota” Bravissi™ Sculpted Masonry Veneer</b>				
<b>Product</b>	<b>Dilution</b>	<b>3 day</b>	<b>7 day</b>	<b>14 day</b>
Manufactured Stone Cleaner	1:2	90%	90%	90%
Manufactured Stone Cleaner	1:3	85%	100%	90%
Custom Masonry Cleaner	1:2	95%	100%	90%
Custom Masonry Cleaner	1:4	100%	100%	95%
Custom Masonry Cleaner	1:6	100%	100%	100%
Vana Trol®	1:6	100%	100%	90%
Vana Trol®	1:8	100%	100%	90%

**Test Results – New Construction Cleaning****Cleaning Effectiveness (% Type N Mortar Removal)**

<b>“Endion Red” Bravissi™ Sculpted Masonry Veneer</b>				
<b>Product</b>	<b>Dilution</b>	<b>7 day</b>	<b>14 day</b>	<b>21 day</b>
Manufactured Stone Cleaner	1:2	85%	100%	90%
Manufactured Stone Cleaner	1:3	90%	100%	90%
Custom Masonry Cleaner	1:2	100%	100%	100%
Custom Masonry Cleaner	1:4	100%	100%	100%
Custom Masonry Cleaner	1:6	100%	100%	100%
Vana Trol®	1:6	90%	90%	85%
Vana Trol®	1:8	85%	90%	80%
<b>“Kasota” Bravissi™ Sculpted Masonry Veneer</b>				
<b>Product</b>	<b>Dilution</b>	<b>7 day</b>	<b>14 day</b>	<b>21 day</b>
Manufactured Stone Cleaner	1:2	100%	100%	90%
Manufactured Stone Cleaner	1:3	100%	100%	90%
Custom Masonry Cleaner	1:2	100%	100%	100%
Custom Masonry Cleaner	1:4	100%	100%	100%
Custom Masonry Cleaner	1:6	100%	100%	100%
Vana Trol®	1:6	100%	85%	100%
Vana Trol®	1:8	100%	85%	90%

**Test Results – Color Uniformity**

<b>Substrate:</b> Bravissi™ Sculpted Masonry Veneer		<b>Pigment Color:</b> “Endion Red”	
Product	Dilution	Aggregate Exposure	Surface Pigment Alteration/Removal
Manufactured Stone Cleaner	1:2	3	3
Manufactured Stone Cleaner	1:3	3	3
Custom Masonry Cleaner	1:2	2	2
Custom Masonry Cleaner	1:4	2	2
Custom Masonry Cleaner	1:6	2	2
Vana Trol®	1:6	3	3
Vana Trol®	1:8	3	3
<b>Substrate:</b> Bravissi™ Sculpted Masonry Veneer		<b>Pigment Color:</b> “Kasota”	
Product	Dilution	Aggregate Exposure	Surface Pigment Alteration/Removal
Manufactured Stone Cleaner	1:2	3	3
Manufactured Stone Cleaner	1:3	3	3
Custom Masonry Cleaner	1:2	3	3
Custom Masonry Cleaner	1:4	3	3
Custom Masonry Cleaner	1:6	3	3
Vana Trol®	1:6	4	4
Vana Trol®	1:8	4	4

The following is the scale used for reporting results of both categories:

0 – **Worst** match to through-body  
 1 – **Poor** match to through-body  
 2 – **Fair** match to through-body

3 – **Good** match to through-body  
 4 – **Best** match to through-body



**Photographs – New Construction Cleaning****“Kasota” Bravissi™ Sculpted Masonry Veneer; 3 Day Cleaning; Type S Mortar**

**Sure Klean®  
Custom Masonry  
Cleaner (1:2)**

**Sure Klean®  
Custom Masonry  
Cleaner (1:4)**

**Sure Klean®  
Custom Masonry  
Cleaner (1:6)**

**Untreated Control**



**Sure Klean®  
Vana Trol® (1:6)**

**Sure Klean®  
Vana Trol® (1:8)**

**Sure Klean®  
Manufactured  
Stone Cleaner (1:2)**

**Sure Klean®  
Manufactured  
Stone Cleaner (1:3)**

**Photographs – New Construction Cleaning**

**“Kasota” Bravissi™ Sculpted Masonry Veneer; 7 Day Cleaning; Type S Mortar**

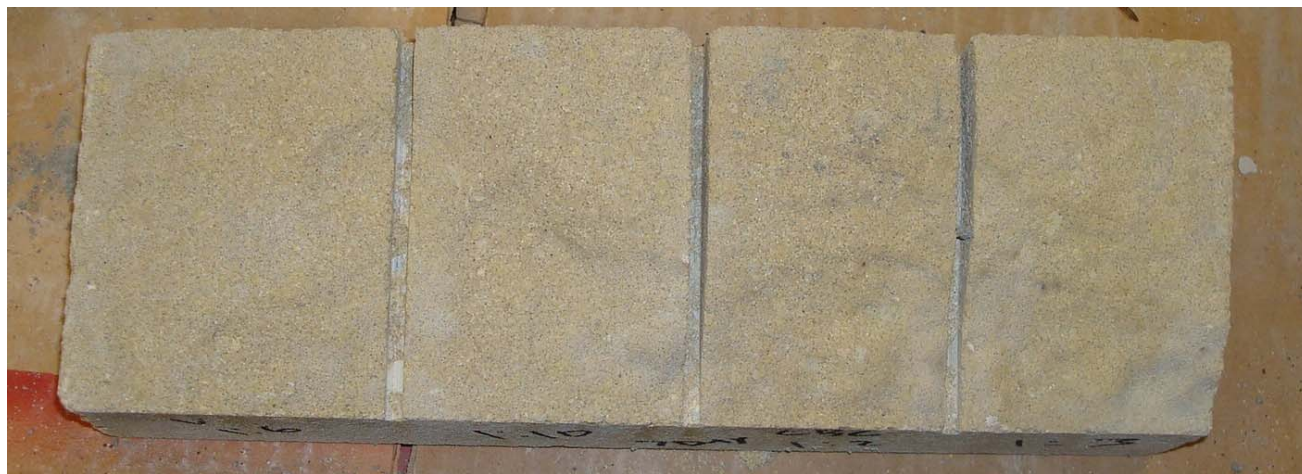


**Sure Klean®  
Custom Masonry  
Cleaner (1:2)**

**Sure Klean®  
Custom Masonry  
Cleaner (1:4)**

**Sure Klean®  
Custom Masonry  
Cleaner (1:6)**

**Untreated Control**



**Sure Klean®  
Vana Trol® (1:6)**

**Sure Klean®  
Vana Trol® (1:8)**

**Sure Klean®  
Manufactured  
Stone Cleaner (1:2)**

**Sure Klean®  
Manufactured  
Stone Cleaner (1:3)**



**Photographs – New Construction Cleaning**

**“Kasota” Bravissi™ Sculpted Masonry Veneer; 14 Day Cleaning; Type S Mortar**



**Sure Klean®  
Custom Masonry  
Cleaner (1:2)**

**Sure Klean®  
Custom Masonry  
Cleaner (1:4)**

**Sure Klean®  
Custom Masonry  
Cleaner (1:6)**

**Untreated Control**



**Sure Klean®  
Vana Trol® (1:6)**

**Sure Klean®  
Vana Trol® (1:8)**

**Sure Klean®  
Manufactured  
Stone Cleaner (1:2)**

**Sure Klean®  
Manufactured  
Stone Cleaner (1:3)**

**Photographs – New Construction Cleaning**

**“Kasota” Bravissi™ Sculpted Masonry Veneer; 7 Day Cleaning Type N Mortar**

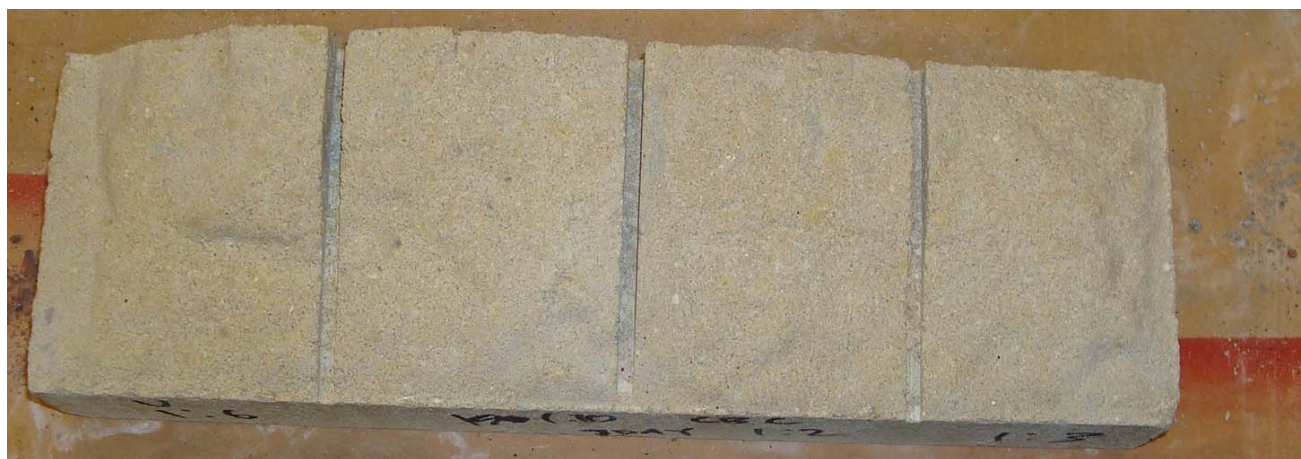


**Sure Klean®  
Custom Masonry  
Cleaner (1:2)**

**Sure Klean®  
Custom Masonry  
Cleaner (1:4)**

**Sure Klean®  
Custom Masonry  
Cleaner (1:6)**

**Untreated Control**



**Sure Klean®  
Vana Trol® (1:6)**

**Sure Klean®  
Vana Trol® (1:8)**

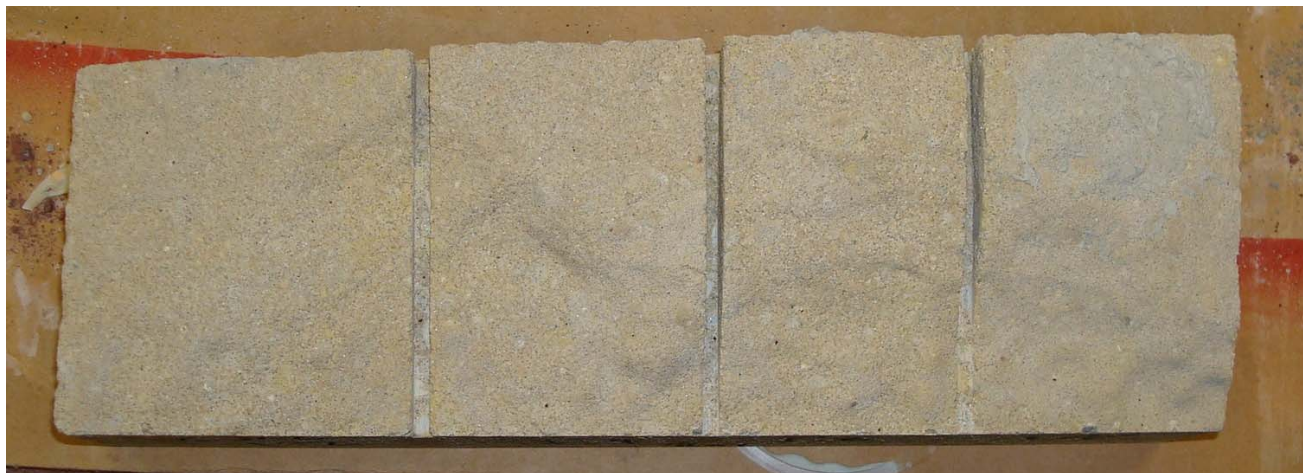
**Sure Klean®  
Manufactured  
Stone Cleaner (1:2)**

**Sure Klean®  
Manufactured  
Stone Cleaner (1:3)**



**Photographs – New Construction Cleaning**

**“Kasota” Bravissi™ Sculpted Masonry Veneer; 14 Day Cleaning; Type N Mortar**



**Sure Klean®  
Custom Masonry  
Cleaner (1:2)**

**Sure Klean®  
Custom Masonry  
Cleaner (1:4)**

**Sure Klean®  
Custom Masonry  
Cleaner (1:6)**

**Untreated Control**



**Sure Klean®  
Vana Trol® (1:6)**

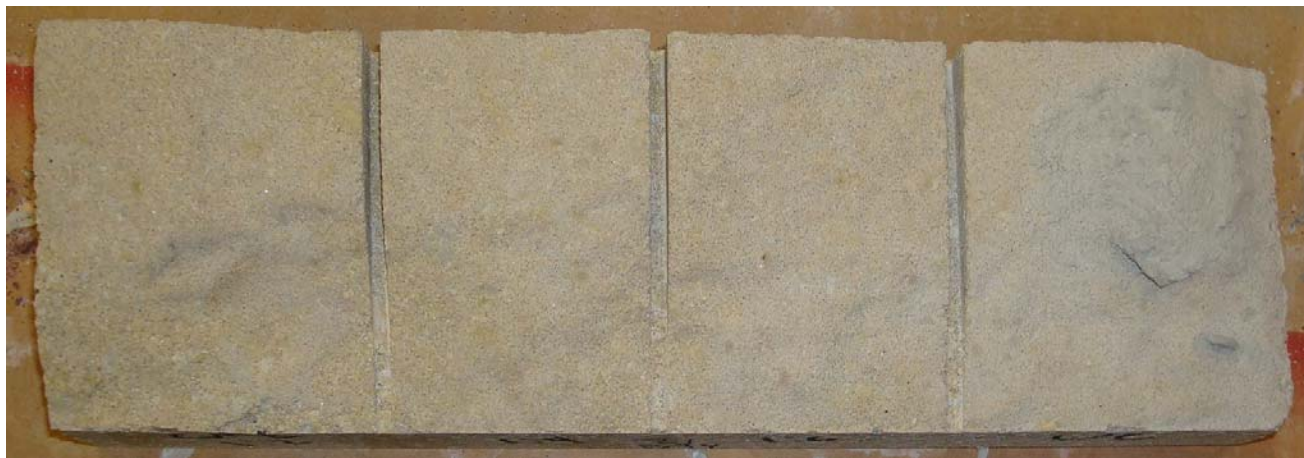
**Sure Klean®  
Vana Trol® (1:8)**

**Sure Klean®  
Manufactured  
Stone Cleaner (1:2)**

**Sure Klean®  
Manufactured  
Stone Cleaner (1:3)**

**Photographs** – New Construction Cleaning

**“Kasota” Bravissi™ Sculpted Masonry Veneer; 21 Day Cleaning; Type N Mortar**



**Sure Klean®  
Custom Masonry  
Cleaner (1:2)**

**Sure Klean®  
Custom Masonry  
Cleaner (1:4)**

**Sure Klean®  
Custom Masonry  
Cleaner (1:6)**

**Untreated Control**



**Sure Klean®  
Vana Trol® (1:6)**

**Sure Klean®  
Vana Trol® (1:8)**

**Sure Klean®  
Manufactured  
Stone Cleaner (1:2)**

**Sure Klean®  
Manufactured  
Stone Cleaner (1:3)**



**Photographs – Color Uniformity****“Kasota” Bravissi™ Sculpted Masonry Veneer; Color Uniformity****Through-body****Custom  
Masonry  
Cleaner (1:2)****Custom  
Masonry  
Cleaner (1:4)****Custom  
Masonry  
Cleaner (1:6)****Through-body****Sure  
Klean®  
Vana Trol®  
(1:6)****Sure  
Klean®  
Vana Trol®  
(1:8)****Sure Klean®  
Manufactured  
Stone  
Cleaner (1:2)****Sure Klean®  
Manufactured  
Stone  
Cleaner (1:3)**

**Conclusions – New Construction Cleaning**

Based on the test data, Sure Klean® Manufactured Stone Cleaner was the most effective product evaluated on the “Endion Red” samples in removing mortar. Sure Klean® Manufactured Stone Cleaner also provided good color uniformity. All of the cleaners worked well on the “Kasota” sample.

Use higher concentrations and surface agitation to maximize aggregate exposure. Use low concentration and surface agitation to minimize aggregate exposure.

**Recommendations – New Construction Cleaning**

Recommendations for cleaning for each type of Bravissi™ Sculpted Masonry Veneer submitted by Anchor Block Company, North Saint Paul, MN are provided in the chart below. Recommendations are based on the optimum dilution for complete removal of mortar while providing the best match to the through-body color of the Bravissi™ Sculpted Masonry Veneer.

Sample	New Construction Cleaning (Type S mortar, 14 day cleaning) (Type N mortar, 21 day cleaning)
“Endion Red”	Sure Klean® Manufactured Stone Cleaner (1:2) or (1:3)
“Kasota”	Sure Klean® Manufactured Stone Cleaner (1:2) or (1:3) or Sure Klean® Custom Masonry Cleaner (1:2) or (1:4) or (1:6) or Sure Klean® Vana Trol® (1:6) or (1:8)

The most appropriate cleaner and dilution should be determined on the specific job-site, and will be dependent primarily on the nature and severity of soiling present at that location.

Apply all products in accordance with the manufacturer's recommendation provided on container labels and product data sheets. On-site testing should be conducted to determine the most appropriate cleaning product and procedures for a particular project. See product literature for additional application and product information.



---

## **Protective Water Repellents**

The testing described below evaluates the suitability of water repellent treatments.

The surface treatments evaluated were selected for their suitability for application based on the following selection criteria:

1. Weatherproofing properties
  2. Color change
  3. Ease of application
- 

### **Description of Products Evaluated** – Protective Water Repellents

**Sure Klean® Weather Seal Blok-Guard® & Graffiti Control** – A clear, solvent-based silicone elastomer formulated to weatherproof concrete block and other porous masonry materials. Blok-Guard® & Graffiti Control protects masonry surfaces from repeated graffiti attacks without altering the natural appearance. Blok-Guard® & Graffiti Control penetrates and fills pores to prevent water penetration through exterior walls exposed to normal weathering.

**Sure Klean® Weather Seal Siloxane WB Concentrate** – A self-emulsifying water repellent concentrate designed for dilution with fresh water at the job site. This solvent-free blend of silanes and oligomeric alkoxysiloxanes mixes easily with water to produce a penetrating water repellent ideal for application to dense or porous masonry surfaces.

---

### **Sample Preparation** – Protective Water Repellents

The submitted samples were scored and allowed to dry for 24 hours prior to treatment. Both of the products were applied by brush in accordance with the current PROSOCO, Inc. Product Data Sheet application instructions. Both treatments were allowed to cure for at least 72 hours prior to testing.

---

### **Test Methods** – Protective Water Repellents

#### **Water Absorption Tube Test: RILEM II.4, 60 mph, 20 Minutes**

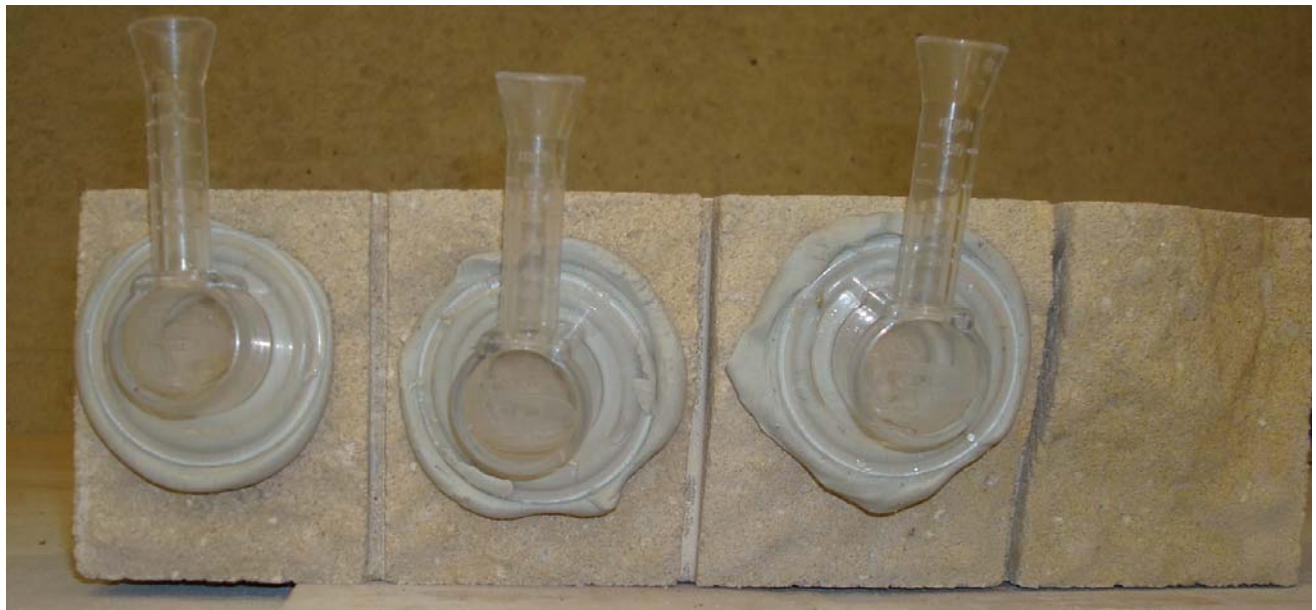
The water absorption tube test simulating wind driven rain conditions was performed. This test simulates 60 mile per hour wind driven rain conditions for a period of 20 minutes. See Technical Services TECH Note RILEM Tube Test Procedures.

**Test Results – Protective Water Repellents****Water Absorption Tube Test: RILEM II.4, 60 mph, 20 Minutes****Results**

<b>“Endion Red” Bravissi™ Sculpted Masonry Veneer</b>	
Untreated Control	<40mph
Sure Klean® Weather Seal Block Guard & Graffiti Control	60mph
Sure Klean® Weather Seal Siloxane WB Concentrate (1:9)	55mph
<b>“Kasota” Bravissi™ Sculpted Masonry Veneer</b>	
Untreated Control	<40mph
Sure Klean® Weather Seal Block Guard & Graffiti Control	60mph
Sure Klean® Weather Seal Siloxane WB Concentrate (1:9)	60mph

**Photographs** – Protective Water Repellents

**“Kasota” Bravissi™ Sculpted Masonry Veneer; RILEM II.4, 60 mph, 20 Minutes**



**Untreated Control**

**Sure Klean®  
Weather Seal  
Blok-Guard® &  
Graffiti Control**

**Sure Klean®  
Weather Seal  
Siloxane WB  
Concentrate (1:9)**

**Conclusions – Protective Water Repellents**

Based upon laboratory evaluations, each of the products provided excellent water repellency to both of the submitted Bravissi™ Sculpted Masonry Veneer. In addition, both Sure Klean® Weather Seal Blok-Guard® & Graffiti Control and Sure Klean® Weather Seal Siloxane WB Concentrate (1:9) slightly enhanced the appearance of the samples.

**Recommendations – Protective Water Repellents**

Recommendations for water repellency for each Bravissi™ Sculpted Masonry Veneer submitted by Anchor Block Company, North Saint Paul, MN are provided in the chart below. Recommendations are based on the treatment that proved most effective and can provide water repellency on all types submitted.

Sample	Protective Water Repellents
All Submitted Bravissi™ Sculpted Masonry Veneer	*Sure Klean® Weather Seal Blok-Guard® & Graffiti Control or Sure Klean® Weather Seal Siloxane WB Concentrate (1:9)

**\*NOTE:** Sure Klean® Weather Seal Blok-Guard® & Graffiti Control is manufactured and marketed in compliance with USEPA AIM VOC regulations (40 CFR 59.403). This product may not be suitable for sale in states and districts with more restrictive AIM VOC regulations.

Apply all products in accordance with the manufacturer's recommendation provided on container labels and product data sheets. On-site testing should be conducted to determine the most appropriate water repellent product and procedures for a particular project. See product literature for additional application and product information.

---

## **Graffiti Control**

This evaluation compares the effectiveness of graffiti control treatments in preventing staining of enamel spray paint and permanent markers.

---

### **Description of Products Evaluated – Graffiti Control**

#### **Graffiti Control Treatments**

**Sure Klean® Weather Seal Blok-Guard® & Graffiti Control** – A clear, solvent-based silicone elastomer formulated to weatherproof concrete block and other porous masonry materials. Blok-Guard® & Graffiti Control protects masonry surfaces from repeated graffiti attacks without altering the natural appearance. Blok-Guard® & Graffiti Control penetrates and fills pores to prevent water penetration through exterior walls exposed to normal weathering. Graffiti removal is fast and easy using Defacer Eraser® Graffiti Wipe. Blok-Guard® & Graffiti Control is easy to apply with low-pressure spray, brush or roller.

**Sure Klean® Weather Seal Blok-Guard® & Graffiti Control II** – A clear-drying, water-based silicone emulsion for weatherproofing concrete block and other porous masonry materials. Blok-Guard® & Graffiti Control II also protects masonry surfaces from graffiti attacks without altering the natural appearance. Blok-Guard® & Graffiti Control II protects exterior walls exposed to normal weathering. Graffiti removal from treated surfaces is fast and easy using Defacer Eraser® Graffiti Wipe. Blok-Guard® & Graffiti Control II is easy to apply with low-pressure spray, brush or roller.

#### **Products Evaluated for Graffiti Removal**

**Defacer Eraser® Graffiti Wipe** – An easy-to-use graffiti remover that does not contain methanol, methylene chloride or other halogenated solvents prohibited on many projects. Graffiti Wipe removes a variety of graffiti stains from most smooth masonry, split-face concrete block, wood and metal surfaces.

**Sure Klean® Fast Acting Stripper** – A thixotropic stripping compound formulated specifically for removal of high strength paints and coatings such as epoxies, polyurethanes, and floor enamels. Additionally, Fast Acting Stripper dissolves most spray paints, marking pens, lacquers and other graffiti.

#### **Graffiti Agents**

Interior/Exterior Spray Paint (Red)  
Permanent Marker (Green)  
Permanent Marker (Red)  
Permanent Marker (Black)

---

### **Sample Preparation – Graffiti Control**

Sections of the Bravissi™ Sculpted Masonry Veneer were treated with Sure Klean® Weather Seal Blok-Guard® & Graffiti Control and Sure Klean® Weather Seal Blok-Guard® & Graffiti Control II in accordance with the current PROSOCO, Inc. Product Data Sheet application instructions and allowed to cure for at least one day. At the end of the cure period, a visual adverse effects evaluation was made and then the graffiti agents were applied to the substrates.

Spray paint and markers were applied as graffiti agents to all treated surfaces no sooner than one day following application of Sure Klean® Weather Seal Blok-Guard® & Graffiti Control and Sure Klean® Weather Seal Blok-Guard® & Graffiti Control II. Removal of the graffiti agents was attempted 24 hours after application of the graffiti agents, using Defacer Eraser® Graffiti Wipe and Sure Klean® Fast Acting Stripper.

**Test Method – Graffiti Control**

Chemical cleaners were evaluated using the following procedure:

1. Apply the product to a dry surface, soiled with graffiti.
2. Allow appropriate dwell time:  
    Defacer Eraser® Graffiti Wipe .....5 minutes  
    Sure Klean® Fast Acting Stripper .....20 minutes
3. Pressure rinse thoroughly until water runs clear. \*
4. Allow the surface to dry thoroughly and visually examine to determine effectiveness.

**\*Pressure Rinsing Equipment** – Masonry washing equipment generating approximately 700-800 psi with a water flow rate of 8 gallons per minute delivered through a 45 degree fan spray tip was used for rinsing.

**Test Results – Graffiti Control**

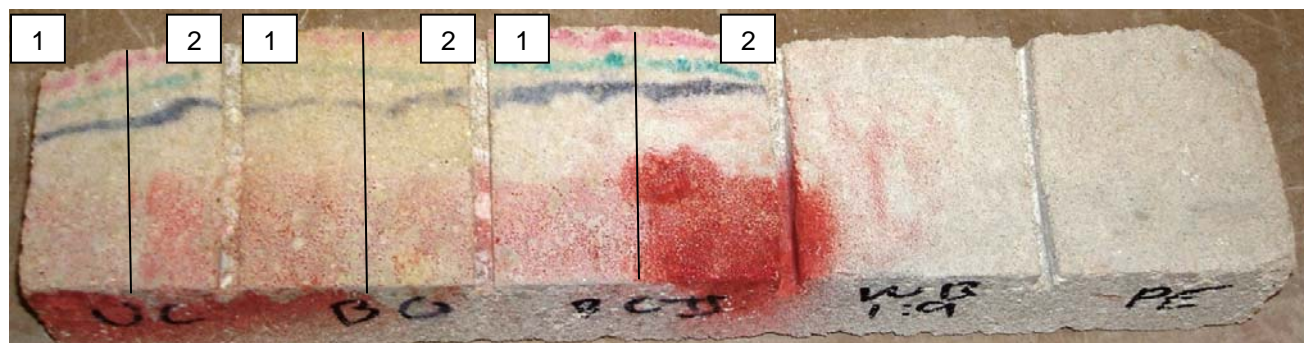
<b>“Endion Red” Bravissi™ Sculpted Masonry Veneer</b>					
<b>Untreated Control</b>	<b>Red Paint</b>	<b>Black Marker</b>	<b>Green Marker</b>	<b>Red Marker</b>	<b>% Avg. Removal</b>
Fast Acting Stripper	90%	60%	40%	40%	<b>58%</b>
Graffiti Wipe	75%	30%	35%	65%	<b>51%</b>
<b>Blok-Guard® &amp; Graffiti Control</b>	<b>Red Paint</b>	<b>Black Marker</b>	<b>Green Marker</b>	<b>Red Marker</b>	<b>% Avg. Removal</b>
Fast Acting Stripper	90%	90%	90%	90%	<b>90%</b>
Graffiti Wipe	95%	85%	90%	85%	<b>89%</b>
<b>Blok-Guard® &amp; Graffiti Control II</b>	<b>Red Paint</b>	<b>Black Marker</b>	<b>Green Marker</b>	<b>Red Marker</b>	<b>% Avg. Removal</b>
Fast Acting Stripper	90%	70%	75%	75%	<b>78%</b>
Graffiti Wipe	90%	75%	75%	75%	<b>79%</b>
<b>“Kasota” Bravissi™ Sculpted Masonry Veneer</b>					
<b>Untreated Control</b>	<b>Red Paint</b>	<b>Black Marker</b>	<b>Green Marker</b>	<b>Red Marker</b>	<b>% Avg. Removal</b>
Fast Acting Stripper	85%	50%	70%	60%	<b>66%</b>
Graffiti Wipe	85%	50%	70%	70%	<b>69%</b>
<b>Blok-Guard® &amp; Graffiti Control</b>	<b>Red Paint</b>	<b>Black Marker</b>	<b>Green Marker</b>	<b>Red Marker</b>	<b>% Avg. Removal</b>
Fast Acting Stripper	85%	75%	90%	90%	<b>85%</b>
Graffiti Wipe	85%	70%	80%	80%	<b>79%</b>
<b>Blok-Guard® &amp; Graffiti Control II</b>	<b>Red Paint</b>	<b>Black Marker</b>	<b>Green Marker</b>	<b>Red Marker</b>	<b>% Avg. Removal</b>
Fast Acting Stripper	85%	50%	50%	45%	<b>58%</b>
Graffiti Wipe	50%	50%	50%	45%	<b>49%</b>

**Photographs – Graffiti Control****“Kasota” Bravissi™ Sculpted Masonry Veneer; Before Graffiti Removal**

Untreated  
Control

Sure Klean®  
Weather Seal  
Blok-Guard® &  
Graffiti Control

Sure Klean®  
Weather Seal  
Blok-Guard® &  
Graffiti Control II

**“Kasota” Bravissi™ Sculpted Masonry Veneer; After Graffiti Removal**

Untreated  
Control

Sure Klean®  
Weather Seal  
Blok-Guard® &  
Graffiti Control

Sure Klean®  
Weather Seal  
Blok-Guard® &  
Graffiti Control II

**Key:**

1. Sure Klean® Fast Acting Stripper
2. Defacer Eraser® Graffiti Wipe



**Conclusions – Graffiti Control**

Based upon laboratory evaluations, graffiti removal was improved when the submitted samples were treated with Sure Klean® Weather Seal Blok-Guard® & Graffiti Control prior to graffiti application. Graffiti removal was also improved when “Endion Red” was treated with Sure Klean® Weather Seal Blok-Guard® & Graffiti Control II prior to graffiti application.

In addition, the treatments slightly enhanced the appearance of the submitted samples.

**Recommendations – Graffiti Control**

Recommendations for graffiti control treatment for each Bravissi™ Sculpted Masonry Veneer submitted by Anchor Block Company, North Saint Paul, MN are provided in the chart below. Recommendations are based on the treatment that proved most effective for providing graffiti repellency and the product that was most effective at removing the graffiti on all types submitted.

Sample	Graffiti Repellents	Graffiti Removers
“Endion Red”	*Sure Klean® Weather Seal Blok-Guard® & Graffiti Control or Sure Klean® Weather Seal Blok-Guard® & Graffiti Control II	Defacer Eraser® Graffiti Wipe or Sure Klean® Fast Acting Stripper
“Kasota”	*Sure Klean® Weather Seal Blok-Guard® & Graffiti Control	Defacer Eraser® Graffiti Wipe or Sure Klean® Fast Acting Stripper

**\*NOTE:** Sure Klean® Weather Seal Blok-Guard® & Graffiti Control is manufactured and marketed in compliance with USEPA AIM VOC regulations (40 CFR 59.403). This product may not be suitable for sale in states and districts with more restrictive AIM VOC regulations.

Apply all products in accordance with the manufacturer’s recommendation provided on container labels and product data sheets. Because the severity of graffiti varies from location to location, on-site testing should be conducted to determine the most appropriate graffiti control product and procedure for a particular project.

**Color and Sheen Enhancement**

This evaluation compares the effectiveness of the evaluated products in providing color and sheen enhancement to the submitted samples.

---

**Description of Products Evaluated – Color and Sheen Enhancement**

**Paver Kare® Paver Enhancer** – A solvent-based blend of high-quality siloxanes modified to provide excellent water repellency and color enhancement to interlocking concrete, fired clay, porous tile and many types of natural stone surfaces. Paver Enhancer penetrates and reacts with the surface to form a chemical bond, providing long-term durability, alkali resistance and superior breatheability.

---

**Test Method – Color and Sheen Enhancement**

All products were applied by brush in accordance with the application instructions in the current PROSOCO, Inc. Product Data Sheets. After 24 hours, a visual evaluation was conducted to determine the level of color and sheen enhancement the treatments provided as compared to the untreated control.

**Test Results – Color and Sheen Enhancement**

<b>“Endion Red” Bravissi™ Sculpted Masonry Veneer</b>		
<b>Treatment</b>	<b>Color Enhancement</b>	<b>Sheen Enhancement</b>
Paver Kare® Paver Enhancer	0	0
<b>“Kasota” Bravissi™ Sculpted Masonry Veneer</b>		
<b>Treatment</b>	<b>Color Enhancement</b>	<b>Sheen Enhancement</b>
Paver Kare® Paver Enhancer	0	0

**Scale: 0 - No Enhancement; Dull**

**1 - Slight Enhancement**

**2 - Moderate Enhancement**

**3 - Significant Enhancement**

**Photographs – Color and Sheen Enhancement****“Endion Red” Bravissi™ Sculpted Masonry Veneer; Treatment Applied**

**Paver Kare® Paver  
Enhancer**

**Untreated  
Control**

**Recommendations – Color and Sheen Enhancement**

Recommendations for color and sheen enhancement for the Bravissi™ Sculpted Masonry Veneer submitted by Anchor Block Company, North Saint Paul, MN are provided in the chart below. Recommendations are based on the treatment that proved most effective in providing color and sheen enhancement to the submitted samples.

Sample	Color Enhancement	Sheen Enhancement
All Submitted Bravissi™ Sculpted Masonry Veneer	No Recommendation	No Recommendation

Glenn Winkler  
Project Testing Laboratory Technician



# *PALLET TAG PROGRAM*

## *Laboratory Report*

Anchor Block Company  
2300 McKnight Road  
North Saint Paul, MN 55109-2830

Bravissi™ Sculpted Masonry Veneer



*Project No. 0708-19 PTP*

*Prepared For:*  
**PROSOCO**  
SINCE 1939

*Prepared By:*  
AMT Laboratories  
September 2007