



PALLET TAG PROGRAM LABORATORY REPORT



PROSOCO, Inc.

Page 1

TABLE OF CONTENTS

SAMPLES SUBMITTED	3
PURPOSE OF TEST	4-5
PRODUCTS EVALUATED	6-7
SECTION A – NEW CONSTRUCTION CLEANING	
DESCRIPTION OF PRODUCTS EVALUATED	8
TEST METHOD	8
TEST RESULTS	9-11
PHOTOGRAPHS	12-17
CONCLUSIONS	18
RECOMMENDATIONS	18
SECTION B – COLOR UNIFORMITY	
DESCRIPTION OF PRODUCTS EVALUATED	19
TEST METHOD	19
TEST RESULTS	20-23
PHOTOGRAPHS	24-25
CONCLUSIONS	26
RECOMMENDATIONS	26
SECTION C – LIMITING SURFACE ALTERATIONS	
DESCRIPTION OF PRODUCTS EVALUATED	27
TEST METHOD	27
TEST RESULTS	28
PHOTOGRAPHS	29
CONCLUSIONS	30
RECOMMENDATIONS	30
SECTION D - PROTECTIVE WATER REPELLENTS	
DESCRIPTION OF PRODUCTS EVALUATED	31
TEST METHODS	31
TEST RESULTS	32-35
PHOTOGRAPHS	36
CONCLUSIONS	37
RECOMMENDATIONS	37



PALLET TAG PROGRAM LABORATORY REPORT



PROSOCO, Inc.

Page 2

SECTION E – GRAFFITI CONTROL

DESCRIPTION OF PRODUCTS EVALUATED	38
TEST METHOD	39
TEST RESULTS	40-43
PHOTOGRAPH	44
CONCLUSIONS	45
RECOMMENDATIONS	45

SECTION F – STAIN REPELLENCY

DESCRIPTION OF PRODUCTS EVALUATED	46
TEST METHOD	47
TEST RESULTS	48-51
PHOTOGRAPHS	52
CONCLUSIONS	53
RECOMMENDATIONS	53

SECTION G- COLOR ENHANCEMENT

DESCRIPTION OF PRODUCTS EVALUATED	54
TEST METHODS	54
TEST RESULTS	55
PHOTOGRAPHS	55
RECOMMENDATIONS	56

ATTACHMENTS

Technical Services TECH Note RILEM Tube Test Procedures

Product Data literature for all products evaluated



PALLET TAG PROGRAM LABORATORY REPORT



PROSOCO, Inc.

Page 3

FOR: Tom Lane
cc: John Bourne

SUBJECT: Gagne & Son Concrete Block
Belgrade, ME

DATE: January 10, 2005

PROJECT: 0409-08 PTP

SAMPLES SUBMITTED: Fourteen types of split-face CMU's, three types of smooth-face CMU's, six types of concrete pavers, and three types of split-face "keystone mini universal caps."

Block	Name	Color	Size
Split-face CMU	"#1"	Dark Brown	4" x 8" x 16"
Split-face CMU	"#2"	Red	8" x 8" x 16"
Split-face CMU	"#3"	Green	8" x 8" x 16"
Split-face CMU	"#13"	Dark Gray	8" x 8" x 16"
Split-face CMU	"#15"	Red	4" x 8" x 16"
Split-face CMU	"#16"	Red	4" x 8" x 16"
Split-face CMU	"4/F"	Dark Brown	4" x 8" x 16"
Split-face CMU	"6P"	Brown	4" x 8" x 16"
Split-face CMU	"7G"	Brown	4" x 8" x 16"
Split-face CMU	"8D"	Dark Brown	4" x 8" x 16"
Split-face CMU	"9E"	Dark Red	4" x 8" x 16"
Split-face CMU	"11C"	Brown	4" x 8" x 16"
Split-face CMU	"12A"	Red	4" x 8" x 16"
Split-face CMU	"Natural"	Light Gray	4" x 8" x 16"
Smooth-face CMU	"#14"	Gray	4" x 8" x 16"
Smooth-face CMU	"#67"	Black	2" x 8" x 16"
Smooth-face CMU	"Regular"	Gray	4" x 8" x 16"
Keystone Mini Universal Cap	"#16 Brown"	Brown	4" x 12" x 18"
Keystone Mini Universal Cap	"#16 Charcoal"	Charcoal	4" x 12" x 18"
Keystone Mini Universal Cap	"#16 Natural"	Gray	4" x 12" x 18"
Concrete Paver	"#6 Beige"	Beige	4" x 8" x 2"
Concrete Paver	"#6 Beige & Black"	Beige/Black	4" x 8" x 2"
Concrete Paver	"#6 Charcoal"	Charcoal	4" x 8" x 2"
Concrete Paver	"#6 Natural"	Light Gray	4" x 8" x 2"
Concrete Paver	"#6 Red"	Red	4" x 8" x 2"
Concrete Paver	"#6 Sandhill"	Brown	4" x 8" x 2"



PALLET TAG PROGRAM LABORATORY REPORT



PROSOCO, Inc.

Page 4

PURPOSE OF TESTING:

Fourteen types of split-face concrete masonry units (CMU's), three types of smooth-face CMU's, three types of split-face keystone mini universal caps (KMUC's), and six types of concrete pavers each with large, small and fine aggregate were submitted for testing using PROSOCO's new construction cleaning, water repellent products, and graffiti control products.

A. Cleaning Concrete Masonry Units: Sure Klean® Custom Masonry Cleaner and Sure Klean® Burnished Custom Masonry Cleaner were evaluated for removal of laboratory applied mortar.

To simulate new construction soiling, all concrete masonry units (CMU's) and keystone mini universal caps (KMUC's) are placed on a bench with finished surface facing upward. Hollow cylinders measuring 50 mm in diameter and 75 mm tall are positioned on top of each CMU and KMUC and filled with a wet mixture of Type S mortar. The wet, mortar-filled cylinder is allowed to remain in contact with the CMU or KMUC for 10 minutes before removal.

Heavy deposits of mortar are removed with dry scraping after 24 hours. Prepared cleaning solutions are then evaluated for their effectiveness in removing residual Type S mortar staining after 3 days, 7 days, and 14 days of curing.

B. Color Uniformity Testing* - Sure Klean® Custom Masonry Cleaner and Sure Klean® Burnished Custom Masonry Cleaner were evaluated at various dilutions to determine the optimal concentration of cleaner that leaves the external surface looking most like the natural through-body color of the CMU or KMUC. Color uniformity was evaluated by comparing aggregate exposure and surface pigment alteration/removal of each cleaned surface compared to the natural through-body color of the CMU or KMUC.

Aggregate Exposure is the visual examination comparing aggregate exposure of the interior, through-body section of CMU or KMUC to surfaces cleaned with selected product(s) at given dilutions.

Surface Pigment Alteration/Removal* is the visual examination comparing the pigmentation of the interior, through-body section of the CMU or KMUC to surfaces cleaned with selected product(s) at given dilutions.

The following is the scale used for reporting results of both categories:

- | | |
|--|---------------------------------------|
| 0 – Worst match to through-body | 3 – Good match to through-body |
| 1 – Poor match to through-body | 4 – Best match to through-body |
| 2 – Fair match to through-body | |

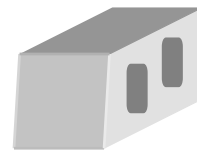
NOTE: When cleaning integrally colored CMU.

Integrally colored concrete masonry units (CMU's) and keystone mini universal caps (KMUC's) frequently have high amounts of pigments concentrated on the surface of the cured concrete unit. Variation of surface pigment concentrations from one CMU or KMUC to the next creates a blotchy appearance in the completed wall. Allowed to remain on the surface of the CMU or KMUC, the weakly bound pigment will weather and streak, further detracting from the appearance of the completed CMU wall.

In addition to removing excess mortar and construction related soiling, the goal of any cleaning operation undertaken on an integrally colored CMU or KMUC should include removal of unnaturally high concentrations of surface pigment. By revealing the natural through-body color on the integrally colored unit, the overall color uniformity and weathering resistance of the completed CMU or KMUC wall is improved.



PALLET TAG PROGRAM LABORATORY REPORT



PROSOCO, Inc.

Page 5

C. Limiting Surface Alterations – Sure Klean® Custom Masonry Cleaner was evaluated to determine if it created any adverse effects when used on the surface of the submitted concrete pavers. Surface Alteration was evaluated visually based upon perceived discoloration or erosion/etching of the concrete pavers.

Surface Finish Removal is the visual examination of the pavers comparing the surface finish of the untreated control surface to the surface finish cleaned with selected product(s) at given dilutions.

Substrate Deterioration is the visual examination of the pavers comparing the surface of the untreated control to surfaces cleaned with selected product(s) at given dilutions looking for any potential erosion/digestion of the paver.

Color Change is the visual examination comparing the color of the untreated control surface to color of surfaces cleaned with selected products at given dilutions.

Staining is the visual examination for changes that are the result of a chemical reaction that leaves a staining precipitate.

D. Protective Water Repellents – Sure Klean® Weather Seal Blok-Guard® and Graffiti Control and Sure Klean® Weather Seal Siloxane WB Concentrate were evaluated for their ability to provide water repellency to the submitted CMU's.

Sure Klean® Weather Seal Blok-Guard® and Graffiti Control was evaluated for its ability to provide water repellency to the submitted KMUC's.

Sure Klean® Paver Enhancer, Consolideck® Saltguard® WB and Stand Off® SLX100 Water & Oil Repellent were evaluated for their ability to provide water repellency to the submitted concrete pavers.

E. Graffiti Control – Sure Klean® Weather Seal Blok-Guard® and Graffiti Control was evaluated for its ability to control graffiti on the submitted CMU's and KMUC's. Sure Klean® Fast Acting Stripper and Defacer Eraser® Graffiti Wipe were evaluated for their ability to remove graffiti from the submitted CMU's and KMUC's.

F. Stain Repellency – Stand Off® SLX100 Water & Oil Repellent was evaluated for its ability to repel stains on the submitted concrete pavers.

G. Color Enhancement – Sure Klean® Paver Enhancer was evaluated for its ability to provide color enhancement to the submitted concrete pavers.



PALLET TAG PROGRAM LABORATORY REPORT



PROSOCO, Inc.

Page 6

PRODUCTS EVALUATED FOR CLEANING AND COLOR UNIFORMITY

Block Type	Product	Dilution
All Submitted Split-face CMU's	Sure Klean® Custom Masonry Cleaner	1:2, 1:4, 1:6
All Submitted Smooth-face CMU's	Sure Klean® Custom Masonry Cleaner	1:2, 1:4, 1:6
	Sure Klean® Burnished Custom Masonry Cleaner	1:2, 1:3
All Submitted Split-face KMUC's	Sure Klean® Custom Masonry Cleaner	1:2, 1:4, 1:6

PRODUCTS EVALUATED FOR LIMITING SURFACE ALTERATIONS

Block Type	Product	Dilution
All Submitted Concrete Pavers	Sure Klean® Custom Masonry Cleaner	1:2, 1:4, 1:6

WATER REPELLENT PRODUCTS EVALUATED

Block Type	Product	Dilution
All Submitted CMU's	Sure Klean® Weather Seal Blok-Guard® and Graffiti Control	Concentrate
	Sure Klean® Weather Seal Siloxane WB Concentrate	1:9, 1:14
All Submitted KMUC's	Sure Klean® Weather Seal Blok-Guard® and Graffiti Control	Concentrate
All Submitted Concrete Pavers	Sure Klean® Paver Enhancer	Concentrate
	Consolideck® Saltguard® WB	Concentrate
	Stand Off® SLX100 Water & Oil Repellent	Concentrate



PALLET TAG PROGRAM LABORATORY REPORT



PROSOCO, Inc.

Page 7

GRAFFITI CONTROL PRODUCTS EVALUATED

Block Type	Product	Dilution
All Submitted CMU's and KMUC's	Sure Klean® Weather Seal Blok-Guard® and Graffiti Control	Concentrate

GRAFFITI REMOVAL PRODUCTS EVALUATED

Block Type	Product	Dilution
All Submitted CMU's and KMUC's	Sure Klean® Fast Acting Stripper	Concentrate
	Defacer Eraser® Graffiti Wipe	Concentrate

STAIN REPELLENT PRODUCTS EVALUATED

Block Type	Product	Dilution
All Submitted Concrete Pavers	Stand Off® SLX100 Water & Oil Repellent	Concentrate

COLOR ENHANCEMENT PRODUCTS EVALUATED

Block Type	Product	Dilution
All Submitted Concrete Pavers	Sure Klean® Paver Enhancer	Concentrate



PALLET TAG PROGRAM LABORATORY REPORT



PROSOCO, Inc.

Page 8

SECTION A – New Construction Cleaning

DESCRIPTION OF PRODUCTS EVALUATED

These cleaning trials were conducted to determine the optimal cleaning/cure time combination on the submitted CMU's and KMUC's.

Sure Klean® Custom Masonry Cleaner – A general purpose, concentrated acidic cleaner for most custom masonry and colored concrete. Removes concrete splashes, excess mortar, mud, heavy efflorescence and surface soiling, leaving the masonry clean and uniform with no acid burning or streaking. Liquid concentrate for dilution with 2-6 parts water. Apply by brush or low-pressure spray.

Sure Klean® Burnished Custom Masonry Cleaner – Removes common construction and atmospheric staining from custom masonry and other architectural concrete surfaces. This general-purpose, non-etching acidic cleaner removes rust, mud, oil, atmospheric dirt, mortar smears and other stains without altering the surface texture. Burnished Custom Masonry Cleaner adds depth to colors and brightens white matrices and exposed aggregate.

TEST METHOD – Cleaning

Dilution ratios refer to mixtures of parts concentrated cleaner : parts fresh water. Chemical cleaners were evaluated using the following procedure:

1. Prewet the surface with water.
2. Apply each cleaner at the appropriate dilutions.
3. Allow appropriate dwell time for each cleaner:
 Custom Masonry Cleaner 3 minutes
 Burnished Custom Masonry Cleaner 3-5 minutes
4. Reapply the products and moderately agitate with a brush.
5. Pressure rinse thoroughly.*
6. Allow the surface to dry for at least 18 hours and visually examine.

* Pressure rinsing was conducted at approximately 1300 psi with a warm water flow rate of 1.9 gallons per minute.



PALLET TAG PROGRAM LABORATORY REPORT



PROSOCO, Inc.

Page 9

TEST RESULTS – New Construction Cleaning

% Removal of Type S Mortar

" #1 " Split-face CMU				
Product	Dilution	3 day	7 day	14 day
Custom Masonry Cleaner	1:2	100%	100%	95%
Custom Masonry Cleaner	1:4	100%	95%	95%
Custom Masonry Cleaner	1:6	100%	95%	95%

" #2 " Split-face CMU				
Product	Dilution	3 day	7 day	14 day
Custom Masonry Cleaner	1:2	100%	95%	95%
Custom Masonry Cleaner	1:4	95%	95%	95%
Custom Masonry Cleaner	1:6	95%	90%	90%

" #3 " Split-face CMU				
Product	Dilution	3 day	7 day	14 day
Custom Masonry Cleaner	1:2	100%	100%	95%
Custom Masonry Cleaner	1:4	100%	100%	95%
Custom Masonry Cleaner	1:6	100%	100%	95%

" #13 " Split-face CMU				
Product	Dilution	3 day	7 day	14 day
Custom Masonry Cleaner	1:2	100%	100%	100%
Custom Masonry Cleaner	1:4	100%	100%	100%
Custom Masonry Cleaner	1:6	100%	100%	100%

" #15 " Split-face CMU				
Product	Dilution	3 day	7 day	14 day
Custom Masonry Cleaner	1:2	95%	95%	90%
Custom Masonry Cleaner	1:4	95%	95%	85%
Custom Masonry Cleaner	1:6	95%	90%	85%

" #16 " Split-face CMU				
Product	Dilution	3 day	7 day	14 day
Custom Masonry Cleaner	1:2	95%	95%	95%
Custom Masonry Cleaner	1:4	95%	95%	95%
Custom Masonry Cleaner	1:6	95%	95%	85%

" 4/F " Split-face CMU				
Product	Dilution	3 day	7 day	14 day
Custom Masonry Cleaner	1:2	95%	95%	90%
Custom Masonry Cleaner	1:4	95%	95%	90%
Custom Masonry Cleaner	1:6	95%	95%	90%



PALLET TAG PROGRAM LABORATORY REPORT



PROSOCO, Inc.

Page 10

TEST RESULTS – New Construction Cleaning

% Removal of Type S Mortar

"6P" Split-face CMU				
Product	Dilution	3 day	7 day	14 day
Custom Masonry Cleaner	1:2	100%	100%	95%
Custom Masonry Cleaner	1:4	95%	100%	95%
Custom Masonry Cleaner	1:6	95%	95%	90%

"7G" Split-face CMU				
Product	Dilution	3 day	7 day	14 day
Custom Masonry Cleaner	1:2	100%	95%	90%
Custom Masonry Cleaner	1:4	95%	95%	90%
Custom Masonry Cleaner	1:6	95%	95%	90%

"8D" Split-face CMU				
Product	Dilution	3 day	7 day	14 day
Custom Masonry Cleaner	1:2	100%	100%	95%
Custom Masonry Cleaner	1:4	100%	100%	95%
Custom Masonry Cleaner	1:6	100%	95%	95%

"9E" Split-face CMU				
Product	Dilution	3 day	7 day	14 day
Custom Masonry Cleaner	1:2	95%	95%	95%
Custom Masonry Cleaner	1:4	95%	90%	95%
Custom Masonry Cleaner	1:6	95%	90%	95%

"11C" Split-face CMU				
Product	Dilution	3 day	7 day	14 day
Custom Masonry Cleaner	1:2	100%	100%	95%
Custom Masonry Cleaner	1:4	100%	100%	95%
Custom Masonry Cleaner	1:6	100%	90%	90%

"12A" Split-face CMU				
Product	Dilution	3 day	7 day	14 day
Custom Masonry Cleaner	1:2	100%	100%	95%
Custom Masonry Cleaner	1:4	100%	100%	95%
Custom Masonry Cleaner	1:6	100%	95%	90%

"Natural" Split-face CMU				
Product	Dilution	3 day	7 day	14 day
Custom Masonry Cleaner	1:2	100%	100%	100%
Custom Masonry Cleaner	1:4	100%	100%	100%
Custom Masonry Cleaner	1:6	100%	100%	100%



PALLET TAG PROGRAM LABORATORY REPORT



PROSOCO, Inc.

Page 11

TEST RESULTS – New Construction Cleaning

% Removal of Type S Mortar

#14" Smooth-face CMU				
Product	Dilution	3 day	7 day	14 day
Custom Masonry Cleaner	1:2	100%	100%	100%
Custom Masonry Cleaner	1:4	100%	100%	100%
Custom Masonry Cleaner	1:6	100%	100%	100%
Burnished Custom Masonry Cleaner	1:2	100%	100%	95%
Burnished Custom Masonry Cleaner	1:3	100%	100%	90%

#67" Smooth-face CMU				
Product	Dilution	3 day	7 day	14 day
Custom Masonry Cleaner	1:2	100%	100%	100%
Custom Masonry Cleaner	1:4	100%	100%	100%
Custom Masonry Cleaner	1:6	100%	100%	100%
Burnished Custom Masonry Cleaner	1:2	99%	95%	99%
Burnished Custom Masonry Cleaner	1:3	99%	95%	95%

"Regular" Smooth-face CMU				
Product	Dilution	3 day	7 day	14 day
Custom Masonry Cleaner	1:2	100%	100%	100%
Custom Masonry Cleaner	1:4	100%	100%	100%
Custom Masonry Cleaner	1:6	100%	100%	100%
Burnished Custom Masonry Cleaner	1:2	100%	100%	95%
Burnished Custom Masonry Cleaner	1:3	100%	100%	90%

#16 Brown" Split-face KMUC				
Product	Dilution	3 day	7 day	14 day
Custom Masonry Cleaner	1:2	100%	95%	95%
Custom Masonry Cleaner	1:4	95%	90%	95%
Custom Masonry Cleaner	1:6	95%	90%	95%

#16 Charcoal" Split-face KMUC				
Product	Dilution	3 day	7 day	14 day
Custom Masonry Cleaner	1:2	100%	95%	95%
Custom Masonry Cleaner	1:4	95%	90%	90%
Custom Masonry Cleaner	1:6	95%	85%	90%

#16 Natural" Split-face KMUC				
Product	Dilution	3 day	7 day	14 day
Custom Masonry Cleaner	1:2	100%	95%	100%
Custom Masonry Cleaner	1:4	100%	95%	100%
Custom Masonry Cleaner	1:6	100%	90%	100%



PALLET TAG PROGRAM LABORATORY REPORT

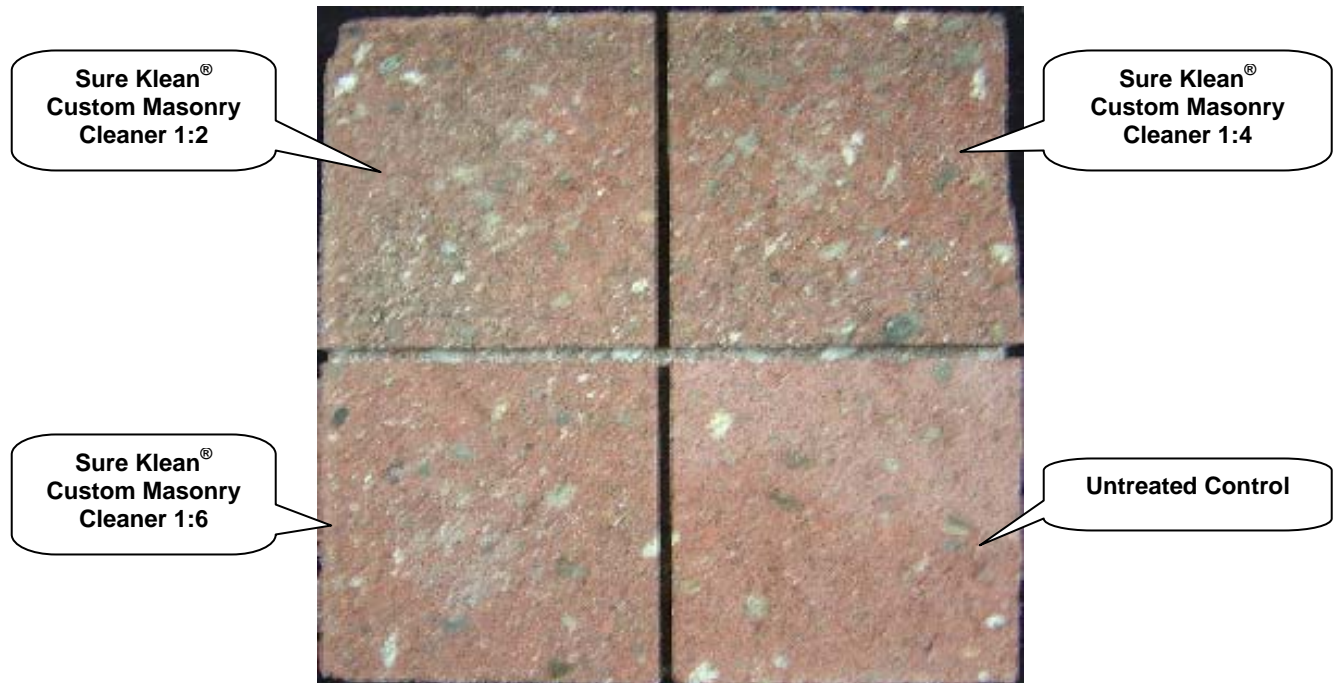


PROSOCO, Inc.

Page 12

PHOTOGRAPHS- Cleaning

"#15" Split-face CMU; 3 Day Cleaning



"#16 Charcoal" Split-face KMUC; 3 Day Cleaning





PALLET TAG PROGRAM LABORATORY REPORT

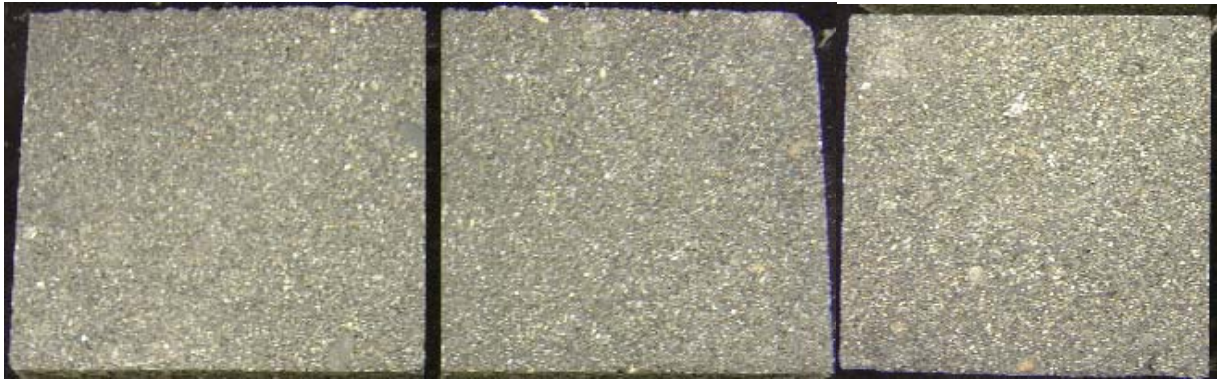


PROSOCO, Inc.

Page 13

PHOTOGRAPHS- Cleaning

"#67" Smooth-face CMU; 3 Day Cleaning



**Sure Klean[®]
Custom Masonry
Cleaner 1:2**

**Sure Klean[®]
Custom Masonry
Cleaner 1:4**

**Sure Klean[®]
Custom Masonry
Cleaner 1:6**



**Sure Klean[®] Burnished
Custom Masonry
Cleaner 1:2**

**Sure Klean[®] Burnished
Custom Masonry
Cleaner 1:3**

**Untreated
Control**



PALLET TAG PROGRAM LABORATORY REPORT

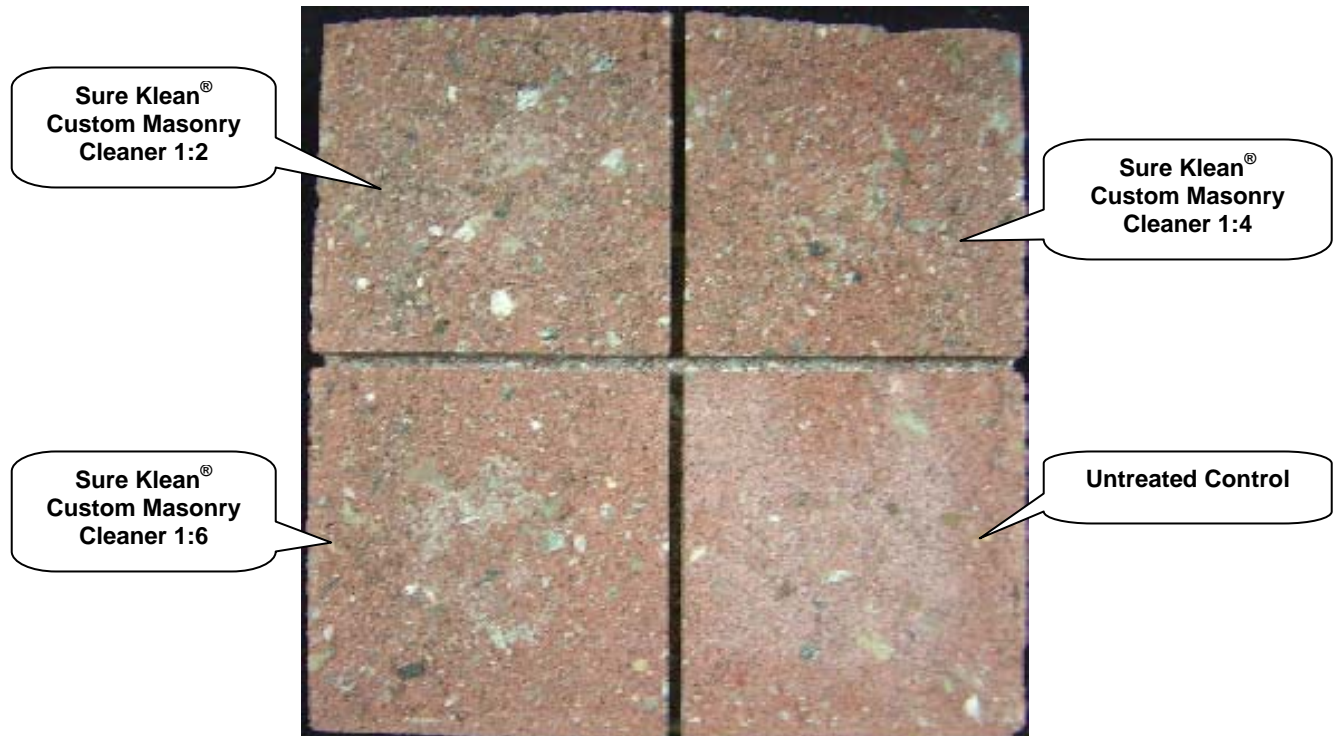


PROSOCO, Inc.

Page 14

PHOTOGRAPHS- Cleaning

"#15" Split-face CMU; 7 Day Cleaning



"#16 Charcoal" Split-face KMUC; 7 Day Cleaning





PALLET TAG PROGRAM LABORATORY REPORT

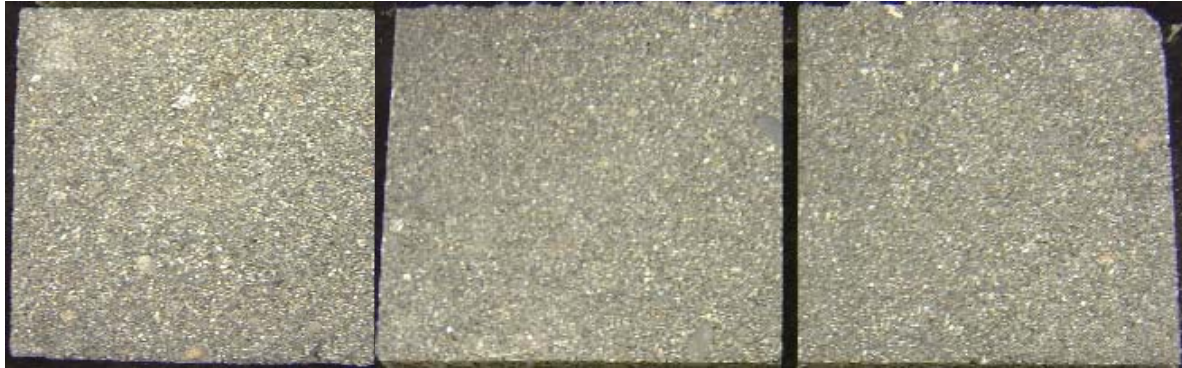


PROSOCO, Inc.

Page 15

PHOTOGRAPHS- Cleaning

"#67" Smooth-face CMU; 7 Day Cleaning



**Sure Klean®
Custom Masonry
Cleaner 1:2**

**Sure Klean®
Custom Masonry
Cleaner 1:4**

**Sure Klean®
Custom Masonry
Cleaner 1:6**



**Sure Klean® Burnished
Custom Masonry
Cleaner 1:2**

**Sure Klean® Burnished
Custom Masonry
Cleaner 1:3**

**Untreated
Control**



PALLET TAG PROGRAM LABORATORY REPORT

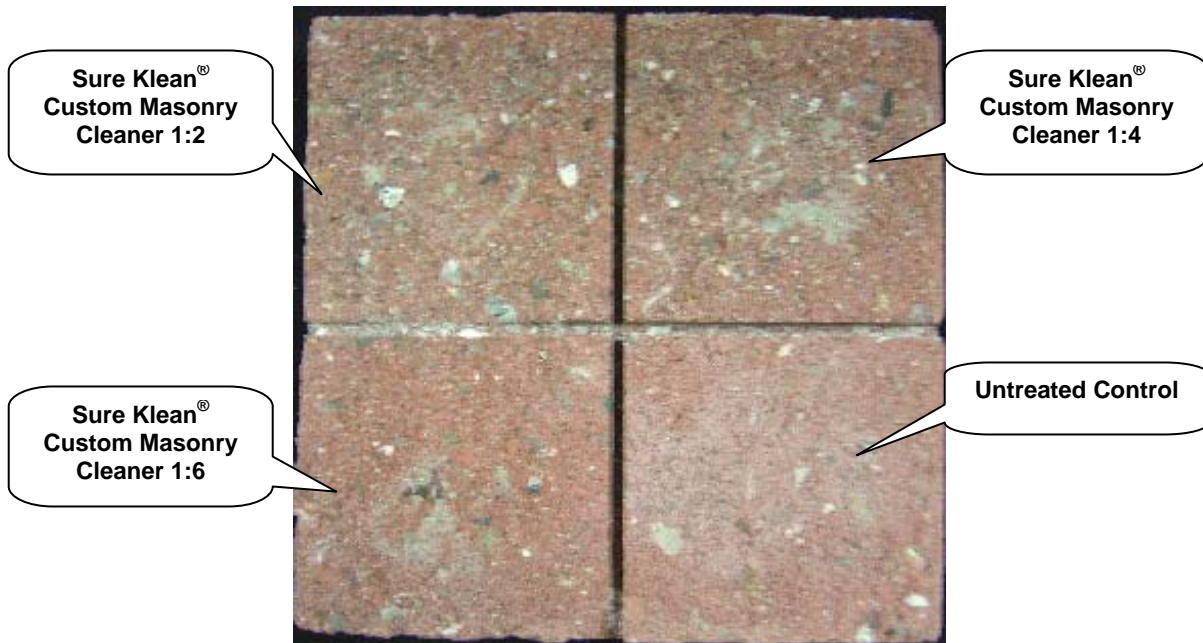


PROSOCO, Inc.

Page 16

PHOTOGRAPHS- Cleaning

"#15" Split-face CMU; 14 Day Cleaning



"#16 Charcoal" Split-face KMUC; 14 Day Cleaning



Sure Klean® Custom
Masonry Cleaner 1:2

Sure Klean® Custom
Masonry Cleaner 1:4

Sure Klean® Custom
Masonry Cleaner 1:6



PALLET TAG PROGRAM LABORATORY REPORT

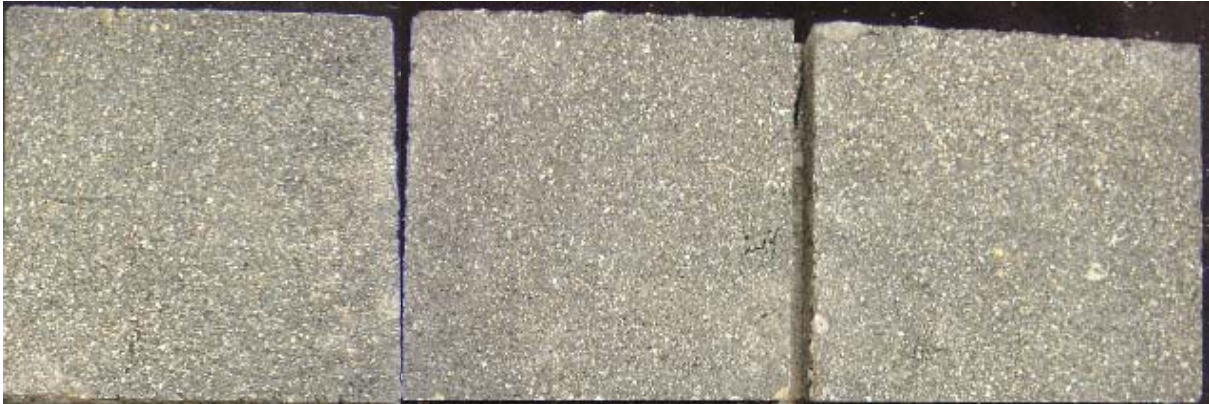


PROSOCO, Inc.

Page 17

PHOTOGRAPHS- Cleaning

"#67" Smooth-face CMU; 14 Day Cleaning



**Sure Klean®
Custom Masonry
Cleaner 1:2**

**Sure Klean®
Custom Masonry
Cleaner 1:4**

**Sure Klean®
Custom Masonry
Cleaner 1:6**



**Sure Klean® Burnished
Custom Masonry
Cleaner 1:2**

**Sure Klean® Burnished
Custom Masonry
Cleaner 1:3**

**Untreated
Control**



PALLET TAG PROGRAM LABORATORY REPORT



PROSOCO, Inc.

Page 18

CONCLUSIONS – Cleaning

Based on the test data, all of the submitted block samples were efficiently cleaned with a dilution of the selected PROSOCO Inc. cleaning product. Use higher concentrations and surface agitation to maximize aggregate exposure. Use low concentration and surface agitation to minimize aggregate exposure.

All dilutions of Sure Klean® Custom Masonry Cleaner and Sure Klean® Burnished Custom Masonry Cleaner tested affected the substrate in a similar manner, removing slight to heavy concentrations of pigmented matrix from the split-face and smooth-face blocks, exposing small and large aggregate, and enhancing the natural appearance of the integrally colored concrete masonry unit.

RECOMMENDED PRODUCTS AND DILUTIONS – CLEANING

Recommendations for cleaning for each type of CMU and KMUC submitted by Gagne & Son Concrete Block, Belgrade, ME, are provided in the chart below. Recommendations are based on the optimum dilution for complete removal of mortar.

Block	New Construction Cleaning (Type S mortar, 14 day)
"#15" Split-face CMU	Sure Klean® Custom Masonry Cleaner (1:2)
"#16" Split-face CMU	Sure Klean® Custom Masonry Cleaner (1:2) OR (1:4)
"#1" Split-face CMU "#2" Split-face CMU "#3" Split-face CMU "#13" Split-face CMU "4/F" Split-face CMU "6P" Split-face CMU "7G" Split-face CMU "8D" Split-face CMU "9E" Split-face CMU "11C" Split-face CMU "12A" Split-face CMU "Natural" Split-face CMU	Sure Klean® Custom Masonry Cleaner (1:2) OR (1:4) OR (1:6)
All Submitted Smooth-face CMU's	Sure Klean® Custom Masonry Cleaner (1:2) OR (1:4) OR (1:6) OR Sure Klean® Burnished Custom Masonry Cleaner (1:2) OR (1:3)
All Submitted Split-face KMUC's	Sure Klean® Custom Masonry Cleaner (1:2) OR (1:4) OR (1:6)

The most appropriate cleaner and dilution should be determined on the specific job-site, and will be dependent primarily on the nature and severity of soiling present at that location. Pressure rinsing equipment providing at least 400 psi at 4-6 gpm delivered through a 15-40 degree fan spray often produces best cleaning results.

Apply all products in accordance with the manufacturer's recommendation provided on container labels and product data sheets. On-site testing should be conducted to determine the most appropriate cleaning product and procedures for a particular project. See product literature for additional application and product information.



PALLET TAG PROGRAM LABORATORY REPORT



PROSOCO, Inc.

Page 19

SECTION B – COLOR UNIFORMITY:

DESCRIPTION OF PRODUCTS EVALUATED – Color Uniformity:

Sure Klean® Custom Masonry Cleaner – A general purpose, concentrated acidic cleaner for most custom masonry and colored concrete. Removes concrete splashes, excess mortar, mud, heavy efflorescence and surface soiling, leaving the masonry clean and uniform with no acid burning or streaking. Liquid concentrate for dilution with 2-6 parts water. Apply by brush or low-pressure spray.

Sure Klean® Burnished Custom Masonry Cleaner – Removes common construction and atmospheric staining from custom masonry and other architectural concrete surfaces. This general-purpose, non-etching acidic cleaner removes rust, mud, oil, atmospheric dirt, mortar smears and other stains without altering the surface texture. Burnished Custom Masonry Cleaner adds depth to colors and brightens white matrices and exposed aggregate.

TEST METHOD – Color Uniformity Testing:

Dilution ratios refer to mixtures of parts concentrated cleaner: parts fresh water. Chemical cleaners were evaluated using the following procedure:

1. Prewet the surface with water.
2. Apply each cleaner at the appropriate dilutions.
3. Allow appropriate dwell time, as specified.

Custom Masonry Cleaner.....	3 minutes
Burnished Custom Masonry Cleaner	3-5 minutes
4. Reapply the products and moderately agitate with a brush.
5. Pressure rinse thoroughly.*
6. Allow the sample to dry for at least 18 hours and visually examine.
7. Break the sample in half and compare the through-body surfaces to the cleaned surfaces for the best match.

*Pressure rinsing was conducted at approximately 1300 psi with a warm water flow rate of 1.9 gallons per minute.



PALLET TAG PROGRAM LABORATORY REPORT



PROSOCO, Inc.

Page 20

TEST RESULTS – Color Uniformity

Substrate: Split-face CMU		Pigment Color: “#1”	
Product	Dilution	Aggregate Exposure	Surface Pigment Alteration/Removal
Custom Masonry Cleaner	1:2	4	4
Custom Masonry Cleaner	1:4	4	4
Custom Masonry Cleaner	1:6	3	3
Substrate: Split-face CMU		Pigment Color: “#2”	
Product	Dilution	Aggregate Exposure	Surface Pigment Alteration/Removal
Custom Masonry Cleaner	1:2	4	4
Custom Masonry Cleaner	1:4	4	4
Custom Masonry Cleaner	1:6	3	3
Substrate: Split-face CMU		Pigment Color: “#3”	
Product	Dilution	Aggregate Exposure	Surface Pigment Alteration/Removal
Custom Masonry Cleaner	1:2	4	4
Custom Masonry Cleaner	1:4	4	4
Custom Masonry Cleaner	1:6	3	3
Substrate: Split-face CMU		Pigment Color: “#13”	
Product	Dilution	Aggregate Exposure	Surface Pigment Alteration/Removal
Custom Masonry Cleaner	1:2	4	4
Custom Masonry Cleaner	1:4	4	4
Custom Masonry Cleaner	1:6	4	4
Substrate: Split-face CMU		Pigment Color: “#15”	
Product	Dilution	Aggregate Exposure	Surface Pigment Alteration/Removal
Custom Masonry Cleaner	1:2	4	4
Custom Masonry Cleaner	1:4	4	4
Custom Masonry Cleaner	1:6	3	3
Substrate: Split-face CMU		Pigment Color: “#16”	
Product	Dilution	Aggregate Exposure	Surface Pigment Alteration/Removal
Custom Masonry Cleaner	1:2	4	4
Custom Masonry Cleaner	1:4	4	4
Custom Masonry Cleaner	1:6	3	3

Scale used for reporting results of both categories

0 – **Worst** match to through-body

1 – **Poor** match to through-body

2 – **Fair** match to through-body

3 – **Good** match to through-body

4 – **Best** match to through-body



PALLET TAG PROGRAM LABORATORY REPORT



PROSOCO, Inc.

Page 21

TEST RESULTS – Color Uniformity

Substrate: Split-face CMU		Pigment Color: “11C”	
Product	Dilution	Aggregate Exposure	Surface Pigment Alteration/Removal
Custom Masonry Cleaner	1:2	4	4
Custom Masonry Cleaner	1:4	4	4
Custom Masonry Cleaner	1:6	3	3
Substrate: Split-face CMU		Pigment Color: “12A”	
Product	Dilution	Aggregate Exposure	Surface Pigment Alteration/Removal
Custom Masonry Cleaner	1:2	4	4
Custom Masonry Cleaner	1:4	4	4
Custom Masonry Cleaner	1:6	3	3
Substrate: Split-face CMU		Pigment Color: “4/F”	
Product	Dilution	Aggregate Exposure	Surface Pigment Alteration/Removal
Custom Masonry Cleaner	1:2	4	4
Custom Masonry Cleaner	1:4	4	4
Custom Masonry Cleaner	1:6	4	4
Substrate: Split-face CMU		Pigment Color: “6P”	
Product	Dilution	Aggregate Exposure	Surface Pigment Alteration/Removal
Custom Masonry Cleaner	1:2	4	4
Custom Masonry Cleaner	1:4	4	4
Custom Masonry Cleaner	1:6	3	3
Substrate: Split-face CMU		Pigment Color: “7G”	
Product	Dilution	Aggregate Exposure	Surface Pigment Alteration/Removal
Custom Masonry Cleaner	1:2	4	4
Custom Masonry Cleaner	1:4	4	4
Custom Masonry Cleaner	1:6	3	3
Substrate: Split-face CMU		Pigment Color: “8D”	
Product	Dilution	Aggregate Exposure	Surface Pigment Alteration/Removal
Custom Masonry Cleaner	1:2	4	4
Custom Masonry Cleaner	1:4	4	4
Custom Masonry Cleaner	1:6	3	3

Scale used for reporting results of both categories

0 – **Worst** match to through-body
1 – **Poor** match to through-body
2 – **Fair** match to through-body

3 – **Good** match to through-body
4 – **Best** match to through-body



PALLET TAG PROGRAM LABORATORY REPORT



PROSOCO, Inc.

Page 22

TEST RESULTS – Color Uniformity

Substrate: Split-face CMU		Pigment Color: "9E"	
Product	Dilution	Aggregate Exposure	Surface Pigment Alteration/Removal
Custom Masonry Cleaner	1:2	4	4
Custom Masonry Cleaner	1:4	4	4
Custom Masonry Cleaner	1:6	3	3
Substrate: Split-face CMU		Pigment Color: "Natural"	
Product	Dilution	Aggregate Exposure	Surface Pigment Alteration/Removal
Custom Masonry Cleaner	1:2	4	4
Custom Masonry Cleaner	1:4	4	4
Custom Masonry Cleaner	1:6	3	3
Substrate: Split-face CMU		Pigment Color: "#14"	
Product	Dilution	Aggregate Exposure	Surface Pigment Alteration/Removal
Custom Masonry Cleaner	1:2	4	4
Custom Masonry Cleaner	1:4	4	4
Custom Masonry Cleaner	1:6	4	4
Burnished Custom Masonry Cleaner	1:2	3	3
Burnished Custom Masonry Cleaner	1:3	3	3
Substrate: Split-face CMU		Pigment Color: "#67"	
Product	Dilution	Aggregate Exposure	Surface Pigment Alteration/Removal
Custom Masonry Cleaner	1:2	3	3
Custom Masonry Cleaner	1:4	3	3
Custom Masonry Cleaner	1:6	3	3
Burnished Custom Masonry Cleaner	1:2	4	4
Burnished Custom Masonry Cleaner	1:3	4	4
Substrate: Split-face CMU		Pigment Color: "Regular"	
Product	Dilution	Aggregate Exposure	Surface Pigment Alteration/Removal
Custom Masonry Cleaner	1:2	4	4
Custom Masonry Cleaner	1:4	4	4
Custom Masonry Cleaner	1:6	4	4
Burnished Custom Masonry Cleaner	1:2	3	3
Burnished Custom Masonry Cleaner	1:3	3	3

Scale used for reporting results of both categories

0 – **Worst** match to through-body

3 – **Good** match to through-body

1 – **Poor** match to through-body

4 – **Best** match to through-body

2 – **Fair** match to through-body



PALLET TAG PROGRAM LABORATORY REPORT



PROSOCO, Inc.

Page 23

TEST RESULTS – Color Uniformity

Substrate: Split-face CMU		Pigment Color: “#16 Brown”	
Product	Dilution	Aggregate Exposure	Surface Pigment Alteration/Removal
Custom Masonry Cleaner	1:2	4	4
Custom Masonry Cleaner	1:4	4	4
Custom Masonry Cleaner	1:6	4	4
Substrate: Split-face CMU		Pigment Color: “#16 Charcoal”	
Product	Dilution	Aggregate Exposure	Surface Pigment Alteration/Removal
Custom Masonry Cleaner	1:2	4	4
Custom Masonry Cleaner	1:4	4	4
Custom Masonry Cleaner	1:6	4	4
Substrate: Split-face CMU		Pigment Color: “#16 Natural”	
Product	Dilution	Aggregate Exposure	Surface Pigment Alteration/Removal
Custom Masonry Cleaner	1:2	4	4
Custom Masonry Cleaner	1:4	4	4
Custom Masonry Cleaner	1:6	4	4

Scale used for reporting results of both categories

0 – **Worst** match to through-body

1 – **Poor** match to through-body

2 – **Fair** match to through-body

3 – **Good** match to through-body

4 – **Best** match to through-body



PALLET TAG PROGRAM LABORATORY REPORT



PROSOCO, Inc.

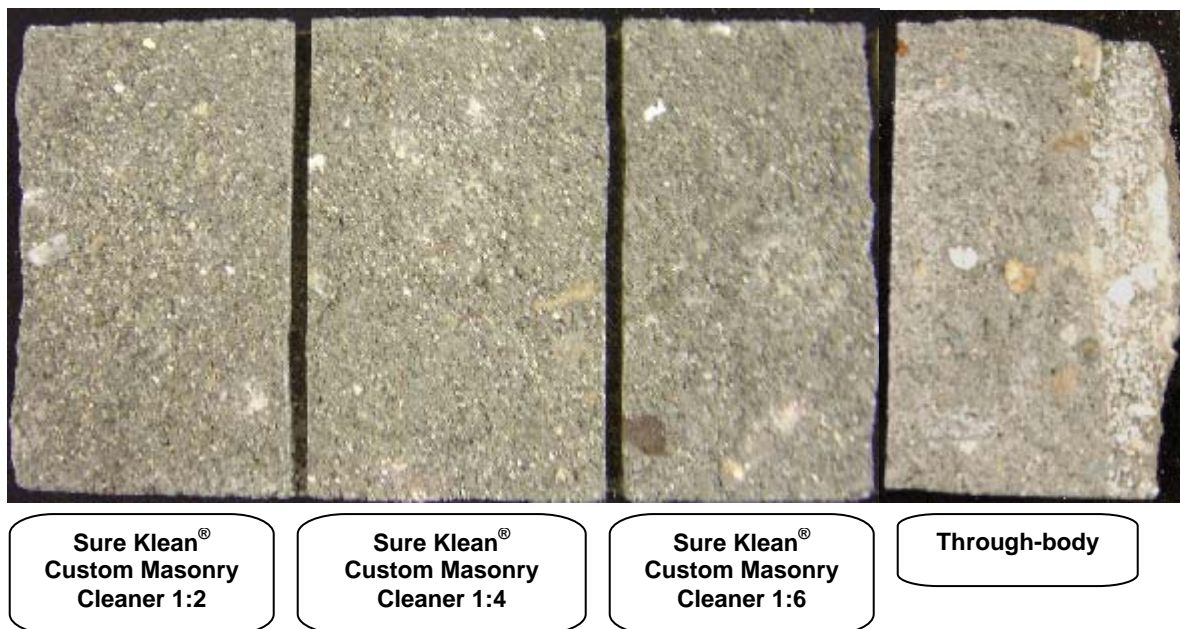
Page 24

PHOTOGRAPHS – Color Uniformity

“#15” Split-face CMU; Through-body



“#16 Charcoal” Split-face KMUC; Through-body





PALLET TAG PROGRAM LABORATORY REPORT

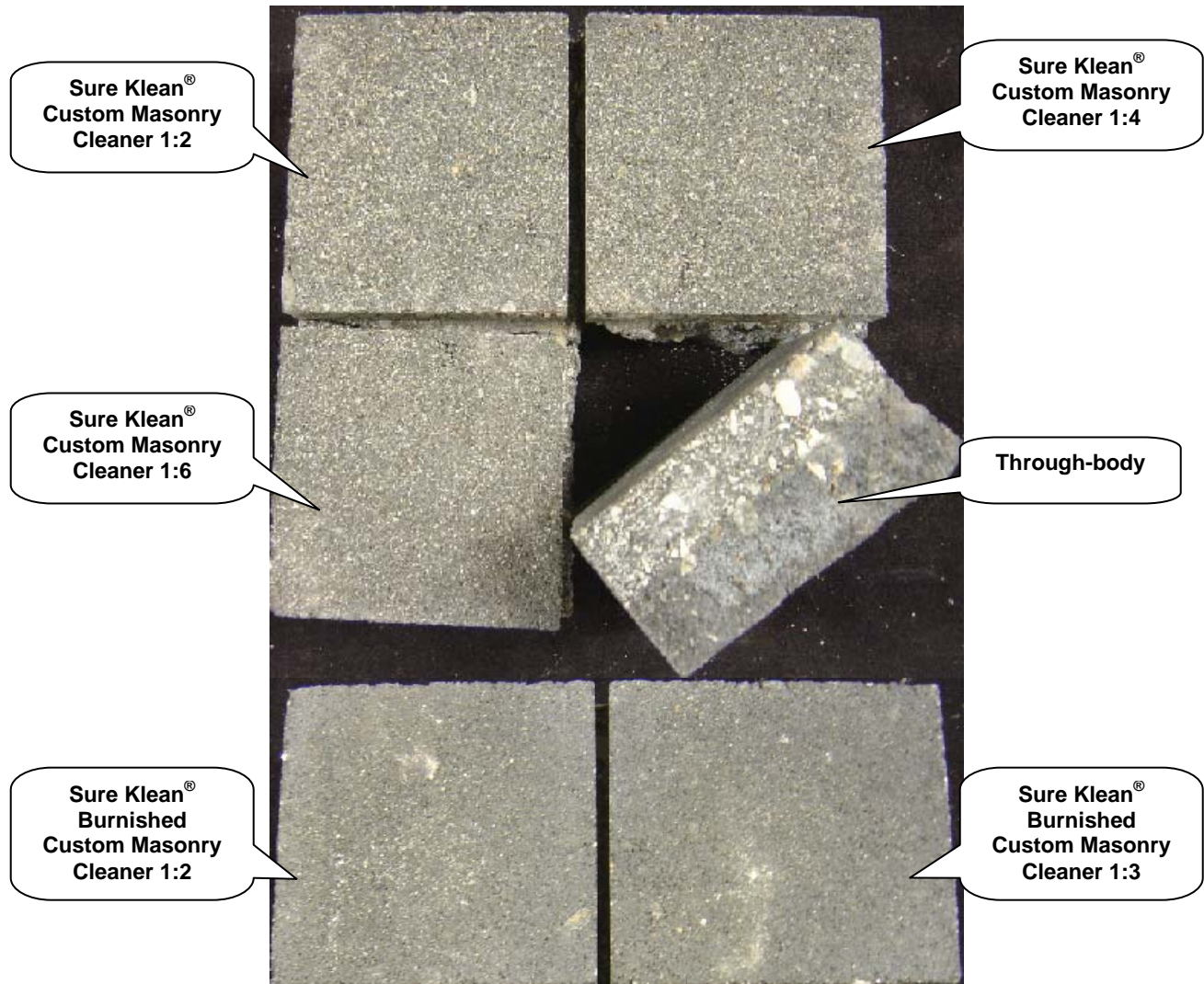


PROSOCO, Inc.

Page 25

PHOTOGRAPHS – Color Uniformity

“#67” Smooth-face CMU; Through-body





PALLET TAG PROGRAM LABORATORY REPORT



PROSOCO, Inc.

Page 26

CONCLUSIONS: COLOR UNIFORMITY:

Most dilutions of Sure Klean® Custom Masonry Cleaner and Sure Klean® Burnished Custom Masonry Cleaner tested affected the substrate in a similar manner. Higher concentrations of cleaner removed moderate to heavy concentrations of pigmented matrix, exposing small and large aggregate. Lower concentrations of cleaner removed slight to moderate concentrations of pigmented matrix, exposing small and large aggregate. All dilutions enhanced the natural appearance of the integrally colored CMU's and KMUC's.

RECOMMENDATIONS – COLOR UNIFORMITY

Recommendations for color uniformity for each type of CMU and KMUC submitted by Gagne & Son Concrete Block, Belgrade, ME, are provided in the chart below. Recommendations are based on the optimum dilution that provides the best color uniformity.

Block	Color Uniformity
"#15" Split-face CMU	Sure Klean® Custom Masonry Cleaner (1:2)
"#16" Split-face CMU	Sure Klean® Custom Masonry Cleaner (1:2) OR (1:4)
"#1" Split-face CMU "#2" Split-face CMU "#3" Split-face CMU "#13" Split-face CMU "4/F" Split-face CMU "6P" Split-face CMU "7G" Split-face CMU "8D" Split-face CMU "9E" Split-face CMU "11C" Split-face CMU "12A" Split-face CMU "Natural" Split-face CMU	Sure Klean® Custom Masonry Cleaner (1:2) OR (1:4) OR (1:6)
All Submitted Smooth-face CMU's	Sure Klean® Custom Masonry Cleaner (1:2) OR (1:4) OR (1:6) OR Sure Klean® Burnished Custom Masonry Cleaner (1:2) OR (1:3)
All Submitted Split-face KMUC's	Sure Klean® Custom Masonry Cleaner (1:2) OR (1:4) OR (1:6)

The most appropriate cleaner and dilution should be determined on the specific job-site, and will be dependent primarily on the nature and severity of soiling present at that location. Pressure rinsing equipment providing at least 400 psi at 4-6 gpm delivered through a 15-40 degree fan spray often produces best cleaning results.

Apply all products in accordance with the manufacturer's recommendation provided on container labels and product data sheets. On-site testing should be conducted to determine the most appropriate cleaning product and procedures for a particular project. See product literature for additional application and product information.



PALLET TAG PROGRAM LABORATORY REPORT



PROSOCO, Inc.

Page 27

SECTION C – LIMITING SURFACE ALTERATIONS

DESCRIPTION OF PRODUCTS EVALUATED – Limiting Surface Alterations

Sure Klean® Custom Masonry Cleaner – A general purpose, concentrated acidic cleaner for most custom masonry and colored concrete. Removes concrete splashes, excess mortar, mud, heavy efflorescence and surface soiling, leaving the masonry clean and uniform with no acid burning or streaking. Liquid concentrate for dilution with 2-6 parts water. Apply by brush or low-pressure spray.

TEST METHOD – Limiting Surface Alterations:

Dilution ratios refer to mixtures of concentrated cleaner : fresh water. Chemical cleaners were evaluated using the following procedure:

1. Prewet the surface with water.
2. Apply the cleaner.
3. Allow the appropriate dwell time, as specified.
 Custom Masonry Cleaner..... 3 minutes
4. Pressure rinse thoroughly. *

* Pressure rinsing was conducted at approximately 1300 psi with a warm water flow rate of 1.9 gallons per minute.



PALLET TAG PROGRAM LABORATORY REPORT



PROSOCO, Inc.

Page 28

TEST RESULTS – Limiting Surface Alterations

Substrate: Concrete Paver		Pigment Color: “#6 Beige”			
Product	Dilution	Surface Finish Removal	Substrate Deterioration	Color Change	Staining
Sure Klean® Custom Masonry Cleaner	1:2	3	0	0	0
Sure Klean® Custom Masonry Cleaner	1:4	3	0	0	0
Sure Klean® Custom Masonry Cleaner	1:6	1	0	0	0
Substrate: Concrete Paver		Pigment Color: “#6 Beige & Black”			
Product	Dilution	Surface Finish Removal	Substrate Deterioration	Color Change	Staining
Sure Klean® Custom Masonry Cleaner	1:2	3	0	0	0
Sure Klean® Custom Masonry Cleaner	1:4	3	0	0	0
Sure Klean® Custom Masonry Cleaner	1:6	2	0	0	0
Substrate: Concrete Paver		Pigment Color: “#6 Charcoal”			
Product	Dilution	Surface Finish Removal	Substrate Deterioration	Color Change	Staining
Sure Klean® Custom Masonry Cleaner	1:2	3	0	0	0
Sure Klean® Custom Masonry Cleaner	1:4	3	0	0	0
Sure Klean® Custom Masonry Cleaner	1:6	2	0	0	0
Substrate: Concrete Paver		Pigment Color: “#6 Natural”			
Product	Dilution	Surface Finish Removal	Substrate Deterioration	Color Change	Staining
Sure Klean® Custom Masonry Cleaner	1:2	2	0	0	0
Sure Klean® Custom Masonry Cleaner	1:4	2	0	0	0
Sure Klean® Custom Masonry Cleaner	1:6	2	0	0	0
Substrate: Concrete Paver		Pigment Color: “#6 Red”			
Product	Dilution	Surface Finish Removal	Substrate Deterioration	Color Change	Staining
Sure Klean® Custom Masonry Cleaner	1:2	3	0	0	0
Sure Klean® Custom Masonry Cleaner	1:4	2	0	0	0
Sure Klean® Custom Masonry Cleaner	1:6	1	0	0	0
Substrate: Concrete Paver		Pigment Color: “#6 Sandhill”			
Product	Dilution	Surface Finish Removal	Substrate Deterioration	Color Change	Staining
Sure Klean® Custom Masonry Cleaner	1:2	2	0	0	0
Sure Klean® Custom Masonry Cleaner	1:4	2	0	0	0
Sure Klean® Custom Masonry Cleaner	1:6	2	0	0	0

0 – No change

1 – change – slight

2 – change – moderate

3 – change – heavy

4 – change - excessive



PALLET TAG PROGRAM LABORATORY REPORT

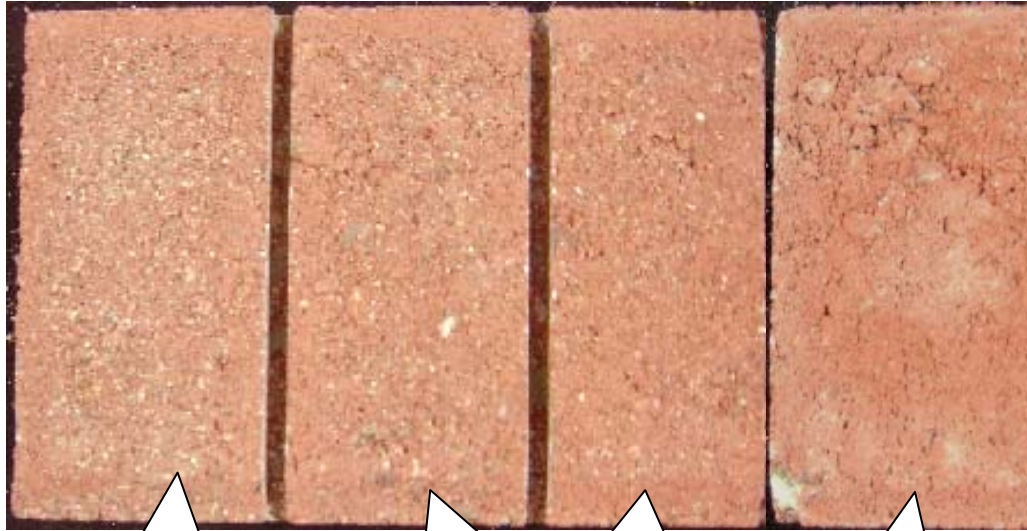


PROSOCO, Inc.

Page 29

PHOTOGRAPHS – Limiting Surface Alterations

“#6 Red” Concrete Paver



**Sure Klean[®]
Custom Masonry
Cleaner 1:2**

**Sure Klean[®]
Custom Masonry
Cleaner 1:4**

**Sure Klean[®]
Custom Masonry
Cleaner 1:6**

**Untreated
Control**



PALLET TAG PROGRAM LABORATORY REPORT



PROSOCO, Inc.

Page 30

CONCLUSIONS – Limiting Surface Alterations

Test results indicate that all dilutions of Sure Klean® Custom Masonry Cleaner tested affected the submitted samples in a similar manner by removing slight to heavy amounts of surface pigment from the submitted concrete pavers. To facilitate easier removal of excess mortar and construction dirt while minimizing any potential surface alterations, clean within 3 days of construction.

RECOMMENDED PRODUCTS AND DILUTIONS - CLEANING

Recommendations for new construction cleaning for each type of concrete paver submitted by Gagne & Son Concrete Block, Belgrade, ME, are provided in the chart below.

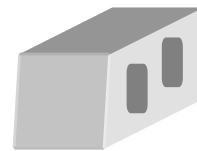
Sample	Limiting Surface Alterations
All Submitted Concrete Pavers	Sure Klean® Custom Masonry Cleaner (1:2) OR (1:4) OR (1:6)

The most appropriate cleaner and dilution should be determined on the specific job-site, and will be dependent primarily on the nature and severity of soiling present at that location. Pressure rinsing equipment providing at least 400 psi at 4-6 gpm delivered through a 15-40 degree fan spray often produces best cleaning results.

Apply all products in accordance with the manufacturer's recommendation provided on container labels and product data sheets. On-site testing should be conducted to determine the most appropriate cleaning product and procedures for a particular project. See product literature for additional application and product information.



PALLET TAG PROGRAM LABORATORY REPORT



PROSOCO, Inc.

Page 31

SECTION D – PROTECTIVE WATER REPELLENTS:

The testing described below evaluates the suitability of water repellent treatments.

The surface treatments evaluated were selected for their suitability for application based on the following selection criteria:

1. Weatherproofing properties
2. Color change
3. Ease of application

DESCRIPTIONS OF PRODUCTS EVALUATED – Protective Water Repellents:

Sure Klean® Weather Seal Blok-Guard® and Graffiti Control – A clear, solvent-based silicone elastomer formulated to weatherproof custom masonry units, cast stone, architectural concrete block, pre-cast concrete, wood and porous masonry. Weather Seal Blok-Guard® and Graffiti Control penetrates and fills pores to prevent water penetration through exterior walls exposed to normal weathering.

Sure Klean® Weather Seal Siloxane WB Concentrate – A concentrated water repellent designed for dilution with fresh water at the jobsite. This solvent-free blend of siloxanes and oligomeric alkoxy siloxanes mixes easily with water to produce a penetrating water repellent ideal for application to dense or porous masonry surfaces. An effective alternative to conventional solvent-based silanes or siloxanes, Siloxane WB penetrates and chemically bonds deep within the masonry substrate to provide long-lasting protection against water-related staining or deterioration. Will not darken, produce a surface film or impair the natural breathing characteristics of treated surfaces.

Sure Klean® Paver Enhancer - A solvent-based blend of high-quality siloxanes modified to provide excellent water repellency and color enhancement to interlocking concrete, fired clay, porous tile and many types of natural stone surfaces. Paver Enhancer penetrates and reacts with the surface to form a chemical bond, providing long-term durability, alkali resistance and superior breatheability.

Consolideck® Saltguard® WB – A ready-to-use water-based, VOC compliant silane/siloxane water repellent and “chloride screen” for the protection of concrete and masonry surfaces. Saltguard® WB penetrates more deeply than conventional water- or solvent-based water repellents. Low odor and alkaline stable, Saltguard® WB is ideal for field or in-plant application to concrete and most masonry surfaces. Saltguard® WB protects horizontal and vertical surfaces from moisture intrusion and chemical attack of chloride salts.

Stand Off® SLX100 Water & Oil Repellent - Combines water and oil repellency on most substrates to prevent staining by waterborne and oily substances. This modified “neat” silane system offers invisible protection and low volatility. The small molecular structure of SLX100 allows for maximum penetration at coverage rates higher than that of conventional silanes. Depth of penetration is controlled by the application rate (loading rate). This makes SLX100 ideal for protecting granite and other dense, color-sensitive surfaces.

SAMPLE PREPARATION – Protective Water Repellents:

The submitted blocks were scored, allowed to dry, and reabsorb atmospheric humidity for 24 hours prior to treatment. The method of application for protective treatments followed the PROSOCO, Inc. 2004 Product Guide. All treatments were allowed to cure at least 3 days prior to testing.



PALLET TAG PROGRAM LABORATORY REPORT



PROSOCO, Inc.

Page 32

TEST METHODS – Protective Water Repellents:

Water Absorption Tube Test: RILEM II.4, 60 mph, 20 Minutes

The water absorption tube test simulating wind driven rain conditions was performed. This test simulates 60 mile per hour wind driven rain conditions for a period of 20 minutes. See Technical Services TECH Note RILEM Tube Test Procedures.

TEST RESULTS – Protective Water Repellents:

Water Absorption Tube Test: RILEM II.4, 60 mph, 20 Minutes

RESULTS	
" #1 " Split-face CMU	
Untreated Control	<40 mph
Blok-Guard® and Graffiti Control	60 mph
Siloxane WB 1:9	60 mph
Siloxane WB 1:14	59 mph
" #2 " Split-face CMU	
Untreated Control	<40 mph
Blok-Guard® and Graffiti Control	60 mph
Siloxane WB 1:9	60 mph
Siloxane WB 1:14	60 mph
" #3 " Split-face CMU	
Untreated Control	<40 mph
Blok-Guard® and Graffiti Control	60 mph
Siloxane WB 1:9	60 mph
Siloxane WB 1:14	60 mph
" #13 " Split-face CMU	
Untreated Control	<40 mph
Blok-Guard® and Graffiti Control	60 mph
Siloxane WB 1:9	60 mph
Siloxane WB 1:14	60 mph
" #15 " Split-face CMU	
Untreated Control	<40 mph
Blok-Guard® and Graffiti Control	60 mph
Siloxane WB 1:9	60 mph
Siloxane WB 1:14	60 mph
" #16 " Split-face CMU	
Untreated Control	<40 mph
Blok-Guard® and Graffiti Control	60 mph
Siloxane WB 1:9	60 mph
Siloxane WB 1:14	60 mph



PALLET TAG PROGRAM LABORATORY REPORT



PROSOCO, Inc.

Page 33

TEST RESULTS – Protective Water Repellents:

Water Absorption Tube Test: RILEM II.4, 60 mph, 20 Minutes

RESULTS	
"4/F" Split-face CMU	
Untreated Control	<40 mph
Blok-Guard® and Graffiti Control	60 mph
Siloxane WB 1:9	60 mph
Siloxane WB 1:14	60 mph
"6P" Split-face CMU	
Untreated Control	<40 mph
Blok-Guard® and Graffiti Control	60 mph
Siloxane WB 1:9	60 mph
Siloxane WB 1:14	59 mph
"7G" Split-face CMU	
Untreated Control	<40 mph
Blok-Guard® and Graffiti Control	60 mph
Siloxane WB 1:9	60 mph
Siloxane WB 1:14	60 mph
"8D" Split-face CMU	
Untreated Control	<40 mph
Blok-Guard® and Graffiti Control	60 mph
Siloxane WB 1:9	60 mph
Siloxane WB 1:14	60 mph
"9E" Split-face CMU	
Untreated Control	45 mph
Blok-Guard® and Graffiti Control	60 mph
Siloxane WB 1:9	60 mph
Siloxane WB 1:14	60 mph
"11C" Split-face CMU	
Untreated Control	<40 mph
Blok-Guard® and Graffiti Control	60 mph
Siloxane WB 1:9	60 mph
Siloxane WB 1:14	59 mph
"12A" Split-face CMU	
Untreated Control	56 mph
Blok-Guard® and Graffiti Control	60 mph
Siloxane WB 1:9	60 mph
Siloxane WB 1:14	60 mph



PALLET TAG PROGRAM LABORATORY REPORT



PROSOCO, Inc.

Page 34

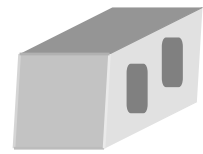
TEST RESULTS – Protective Water Repellents:

Water Absorption Tube Test: RILEM II.4, 60 mph, 20 Minutes

RESULTS	
"Natural" Split-face CMU	
Untreated Control	<40 mph
Blok-Guard® and Graffiti Control	60 mph
Siloxane WB 1:9	60 mph
Siloxane WB 1:14	60 mph
"#14" Smooth-face CMU	
Untreated Control	<40 mph
Blok-Guard® and Graffiti Control	60 mph
Siloxane WB 1:9	60 mph
Siloxane WB 1:14	60 mph
"#67" Smooth-face CMU	
Untreated Control	<40 mph
Blok-Guard® and Graffiti Control	60 mph
Siloxane WB 1:9	60 mph
Siloxane WB 1:14	60 mph
"Regular" Smooth-face CMU	
Untreated Control	<40 mph
Blok-Guard® and Graffiti Control	60 mph
Siloxane WB 1:9	60 mph
Siloxane WB 1:14	60 mph
"#16 Brown" Split-face KMUC	
Untreated Control	<40 mph
Blok-Guard® and Graffiti Control	59 mph
"#16 Charcoal" Split-face KMUC	
Untreated Control	<40 mph
Blok-Guard® and Graffiti Control	59 mph
"#16 Natural" Split-face KMUC	
Untreated Control	<40 mph
Blok-Guard® and Graffiti Control	59 mph
"#6 Beige" Concrete Paver	
Untreated Control	<40 mph
Paver Enhancer	60 mph
Saltguard® WB	<40 mph
SLX100 Water & Oil Repellent	60 mph



PALLET TAG PROGRAM LABORATORY REPORT



PROSOCO, Inc.

Page 35

TEST RESULTS – Protective Water Repellents:

Water Absorption Tube Test: RILEM II.4, 60 mph, 20 Minutes

RESULTS	
“#6 Beige & Black” Concrete Paver	
Untreated Control	<40 mph
Paver Enhancer	60 mph
Saltguard® WB	60 mph
SLX100 Water & Oil Repellent	60 mph
“#6 Charcoal” Concrete Paver	
Untreated Control	<40 mph
Paver Enhancer	60 mph
Saltguard® WB	<40 mph
SLX100 Water & Oil Repellent	60 mph
“#6 Natural” Concrete Paver	
Untreated Control	<40 mph
Paver Enhancer	60 mph
Saltguard® WB	<40 mph
SLX100 Water & Oil Repellent	60 mph
“#6 Red” Concrete Paver	
Untreated Control	<40 mph
Paver Enhancer	60 mph
Saltguard® WB	<40 mph
SLX100 Water & Oil Repellent	60 mph
“#6 Sandhill” Concrete Paver	
Untreated Control	<40 mph
Paver Enhancer	60 mph
Saltguard® WB	<40 mph
SLX100 Water & Oil Repellent	60 mph



PALLET TAG PROGRAM LABORATORY REPORT

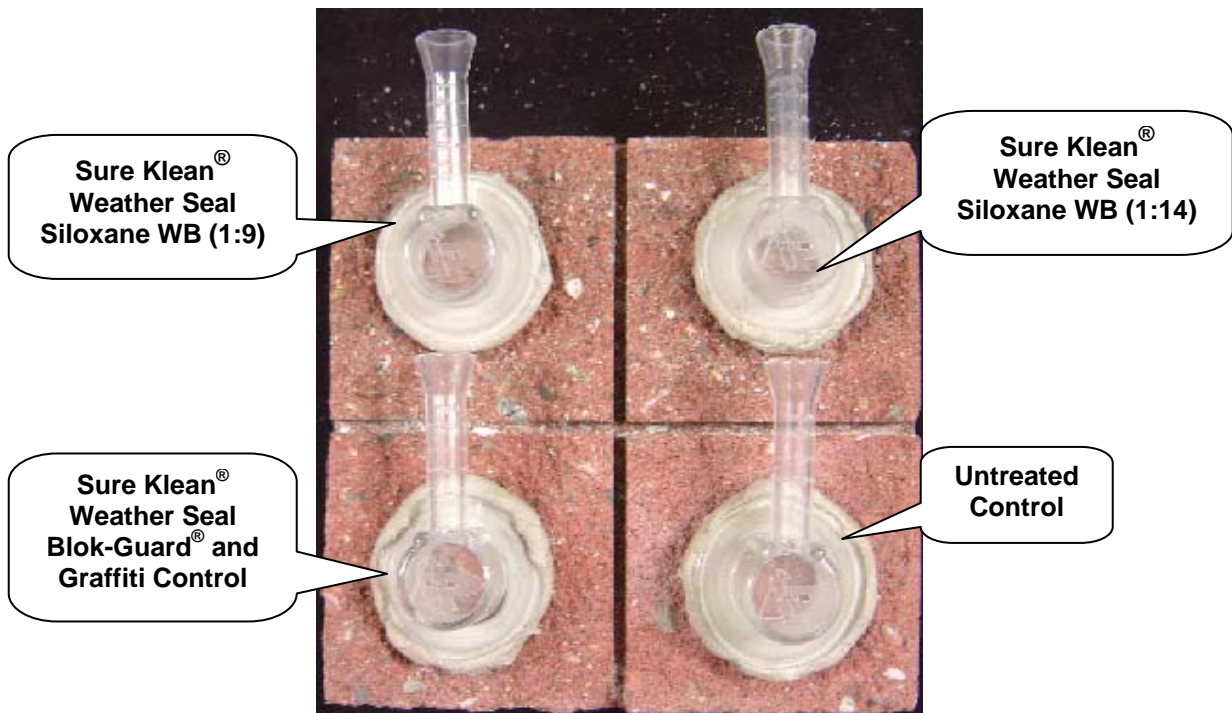


PROSOCO, Inc.

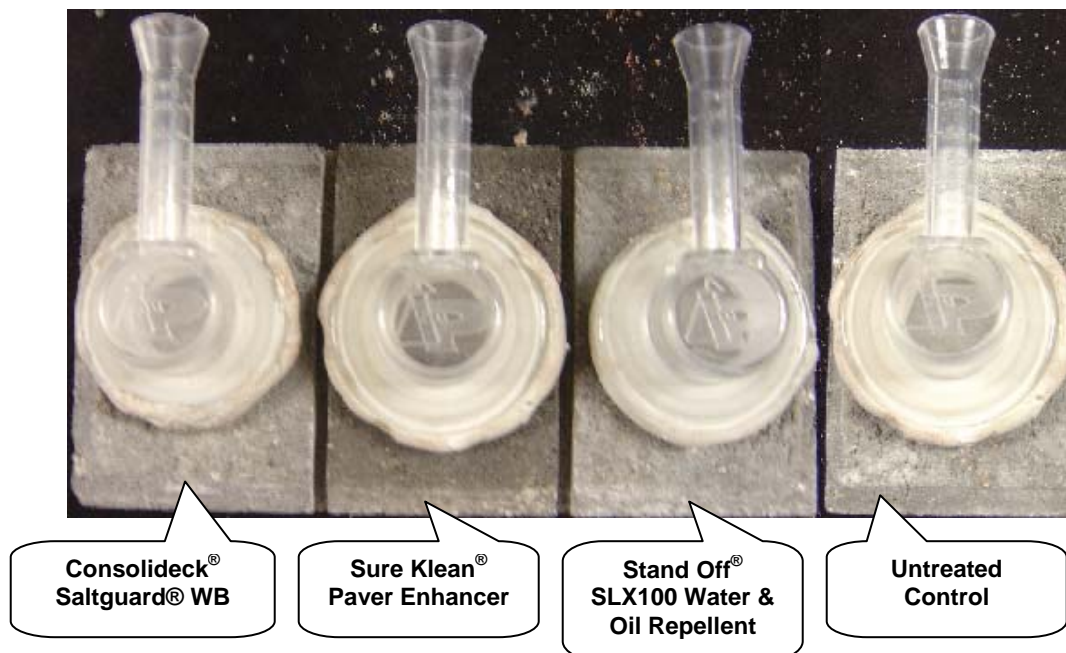
Page 36

PHOTOGRAPHS- Protective Water Repellents

"#15" Split-face CMU- RILEM Testing



"#6 Charcoal" Concrete Paver – RILEM Testing





PALLET TAG PROGRAM LABORATORY REPORT



PROSOCO, Inc.

Page 37

CONCLUSIONS - Protective Water Repellents

Based upon laboratory evaluations, Sure Klean® Weather Seal Blok-Guard® and Graffiti Control and Sure Klean® Weather Seal Siloxane WB Concentrate diluted with nine and fourteen parts water provided excellent water repellency to all of the submitted CMU's. In addition, Sure Klean® Weather Seal Blok-Guard® and Graffiti Control enhanced the appearance of each CMU.

Sure Klean® Weather Seal Blok-Guard® and Graffiti Control provided excellent water repellency to all of the submitted KMUC's. In addition, Sure Klean® Weather Seal Blok-Guard® and Graffiti Control enhanced the appearance of each KMUC.

Sure Klean® Paver Enhancer and Stand Off® SLX100 Water & Oil Repellent provided excellent water repellency to all of the submitted concrete pavers. Consolideck® Saltguard® WB provided excellent water repellency to the "#6 Beige & Black" concrete paver. In addition, Sure Klean® Paver Enhancer enhanced the natural appearance of each concrete paver.

RECOMMENDATIONS - PROTECTIVE WATER REPELLENTS

Recommendations for water repellency treatment for each type of CMU, KMUC, and concrete paver submitted by Gagne & Son Concrete Block, Belgrade, ME, are provided in the chart below. Recommendations are based on the treatment that proved most effective and can provide water repellency on all types submitted.

Block Type	Product
All Submitted CMU's	Sure Klean® Weather Seal Blok-Guard® and Graffiti Control OR Sure Klean® Weather Seal Siloxane WB Concentrate (1:9) OR (1:14)
All Submitted KMUC's	Sure Klean® Weather Seal Blok-Guard® and Graffiti Control
"#6 Beige & Black" Concrete Paver	Sure Klean® Paver Enhancer OR Consolideck® Saltguard® WB OR Stand Off® SLX100 Water & Oil Repellent
"#6 Beige" Concrete Paver "#6 Charcoal" Concrete Paver "#6 Natural" Concrete Paver "#6 Red" Concrete Paver "#6 Sandhill" Concrete Paver	Sure Klean® Paver Enhancer OR Stand Off® SLX100 Water & Oil Repellent

Apply all products in accordance with the manufacturer's recommendation provided on container labels and product data sheets. On-site testing should be conducted to determine the most appropriate water repellent product and procedures for a particular project. See product literature for additional application and product information.



PALLET TAG PROGRAM LABORATORY REPORT



PROSOCO, Inc.

Page 38

SECTION E – GRAFFITI CONTROL

DESCRIPTION OF PRODUCTS EVALUATED

These trials were conducted to determine the optimal graffiti control treatment.

Graffiti Control Treatments

Sure Klean® Weather Seal Blok-Guard® and Graffiti Control – A clear, solvent-based silicone elastomer formulated to weatherproof concrete block and other porous masonry material. Sure Klean® Weather Seal Blok-Guard® and Graffiti Control protects masonry surfaces from repeated graffiti attacks without altering the natural appearance.

Products Evaluated for Graffiti Removal

Defacer Eraser® Graffiti Wipe – An easy-to-use graffiti remover that does not contain methanol, methylene chloride or other “halogenated” solvents prohibited on many projects. Graffiti Wipe removes a variety of graffiti stains from most smooth masonry, wood and metal surfaces.

Sure Klean® Fast Acting Stripper – A thixotropic stripping compound formulated specifically for removal of high strength paints and coatings such as epoxies, polyurethanes, and floor enamels. Additionally, Fast Acting Stripper dissolves most spray paints, marking pens, lacquers and other graffiti.

Graffiti Agents

Interior/Exterior Spray Paint (Red)
Permanent Marker (Green)
Permanent Marker (Red)
Permanent Marker (Black)



PALLET TAG PROGRAM LABORATORY REPORT



PROSOCO, Inc.

Page 39

SAMPLE PREPARATION – Graffiti Control

This evaluation compares the effectiveness in preventing staining of enamel spray paint and permanent markers.

Sections of the concrete samples were treated with one coat of Sure Klean® Weather Seal Blok-Guard® and Graffiti Control, in accordance with PROSOCO, Inc.'s Product Guide application instructions and then allowed to cure for at least one day. At the end of the one-day cure period, a visual adverse effects evaluation was made and then the graffiti agents were applied to the substrates.

Spray paint and markers were applied as graffiti agents to all treated surfaces no sooner than one day following application of Sure Klean® Weather Seal Blok-Guard® and Graffiti Control. Removal of the graffiti agents was attempted 24 hours after application of the graffiti agents, using Defacer Eraser® Graffiti Wipe and Sure Klean® Fast Acting Stripper.

TEST METHOD – Graffiti Control

Chemical cleaners were evaluated using the following procedure:

1. Apply the product to a dry surface, soiled with graffiti.
2. Allow appropriate dwell time:
 Graffiti Wipe..... 5 minutes
 Fast Acting Stripper 20 minutes
3. Pressure rinse thoroughly until water runs clear. *
4. Allow the surface to dry thoroughly and visually examine to determine effectiveness.

* Pressure rinsing was conducted at approximately 1300 psi with a warm water flow rate of 1.9 gallons per minute.



PALLET TAG PROGRAM LABORATORY REPORT



PROSOCO, Inc.

Page 40

TEST RESULTS – Graffiti Control

% Removal

“#1” Split-face CMU					
Untreated Control	Red Paint	Black Marker	Green Marker	Red Marker	% Avg. Removal
Fast Acting Stripper	75%	100%	90%	90%	89%
Graffiti Wipe	75%	90%	95%	95%	89%
Blok-Guard® and Graffiti Control	Red Paint	Black Marker	Green Marker	Red Marker	% Avg. Removal
Fast Acting Stripper	95%	100%	100%	100%	99%
Graffiti Wipe	95%	100%	100%	100%	99%
“#2” Split-face CMU					
Untreated Control	Red Paint	Black Marker	Green Marker	Red Marker	% Avg. Removal
Fast Acting Stripper	70%	95%	20%	50%	59%
Graffiti Wipe	70%	20%	20%	50%	40%
Blok-Guard® and Graffiti Control	Red Paint	Black Marker	Green Marker	Red Marker	% Avg. Removal
Fast Acting Stripper	85%	100%	95%	95%	94%
Graffiti Wipe	85%	100%	95%	95%	94%
“#3” Split-face CMU					
Untreated Control	Red Paint	Black Marker	Green Marker	Red Marker	% Avg. Removal
Fast Acting Stripper	90%	90%	40%	60%	70%
Graffiti Wipe	70%	50%	40%	60%	55%
Blok-Guard® and Graffiti Control	Red Paint	Black Marker	Green Marker	Red Marker	% Avg. Removal
Fast Acting Stripper	100%	100%	100%	100%	100%
Graffiti Wipe	100%	100%	100%	100%	100%
“#13” Split-face CMU					
Untreated Control	Red Paint	Black Marker	Green Marker	Red Marker	% Avg. Removal
Fast Acting Stripper	60%	95%	70%	70%	74%
Graffiti Wipe	60%	80%	70%	70%	70%
Blok-Guard® and Graffiti Control	Red Paint	Black Marker	Green Marker	Red Marker	% Avg. Removal
Fast Acting Stripper	90%	100%	100%	100%	98%
Graffiti Wipe	95%	100%	100%	100%	99%
“#15” Split-face CMU					
Untreated Control	Red Paint	Black Marker	Green Marker	Red Marker	% Avg. Removal
Fast Acting Stripper	60%	100%	90%	95%	86%
Graffiti Wipe	60%	100%	95%	100%	89%
Blok-Guard® and Graffiti Control	Red Paint	Black Marker	Green Marker	Red Marker	% Avg. Removal
Fast Acting Stripper	90%	100%	100%	100%	98%
Graffiti Wipe	90%	100%	100%	100%	98%



PALLET TAG PROGRAM LABORATORY REPORT



PROSOCO, Inc.

Page 41

TEST RESULTS – Graffiti Control

% Removal

“#16” Split-face CMU					
Untreated Control	Red Paint	Black Marker	Green Marker	Red Marker	% Avg. Removal
Fast Acting Stripper	80%	100%	90%	100%	93%
Graffiti Wipe	80%	90%	90%	100%	90%
Blok-Guard® and Graffiti Control	Red Paint	Black Marker	Green Marker	Red Marker	% Avg. Removal
Fast Acting Stripper	100%	100%	100%	100%	100%
Graffiti Wipe	85%	100%	100%	100%	96%
“4/F” Split-face CMU					
Untreated Control	Red Paint	Black Marker	Green Marker	Red Marker	% Avg. Removal
Fast Acting Stripper	50%	95%	20%	60%	56%
Graffiti Wipe	50%	50%	20%	60%	45%
Blok-Guard® and Graffiti Control	Red Paint	Black Marker	Green Marker	Red Marker	% Avg. Removal
Fast Acting Stripper	95%	100%	90%	95%	95%
Graffiti Wipe	95%	100%	90%	90%	94%
“6P” Split-face CMU					
Untreated Control	Red Paint	Black Marker	Green Marker	Red Marker	% Avg. Removal
Fast Acting Stripper	90%	95%	90%	95%	93%
Graffiti Wipe	40%	20%	85%	95%	60%
Blok-Guard® and Graffiti Control	Red Paint	Black Marker	Green Marker	Red Marker	% Avg. Removal
Fast Acting Stripper	99%	100%	100%	100%	100%
Graffiti Wipe	99%	100%	100%	100%	100%
“7G” Split-face CMU					
Untreated Control	Red Paint	Black Marker	Green Marker	Red Marker	% Avg. Removal
Fast Acting Stripper	70%	95%	85%	80%	83%
Graffiti Wipe	60%	80%	75%	80%	74%
Blok-Guard® and Graffiti Control	Red Paint	Black Marker	Green Marker	Red Marker	% Avg. Removal
Fast Acting Stripper	85%	100%	100%	100%	96%
Graffiti Wipe	85%	100%	100%	100%	96%
“8D” Split-face CMU					
Untreated Control	Red Paint	Black Marker	Green Marker	Red Marker	% Avg. Removal
Fast Acting Stripper	70%	100%	100%	95%	91%
Graffiti Wipe	40%	100%	90%	95%	81%
Blok-Guard® and Graffiti Control	Red Paint	Black Marker	Green Marker	Red Marker	% Avg. Removal
Fast Acting Stripper	95%	100%	100%	100%	99%
Graffiti Wipe	95%	100%	100%	100%	99%



PALLET TAG PROGRAM LABORATORY REPORT



PROSOCO, Inc.

Page 42

TEST RESULTS – Graffiti Control

% Removal

“9E” Split-face CMU					
Untreated Control	Red Paint	Black Marker	Green Marker	Red Marker	% Avg. Removal
Fast Acting Stripper	70%	95%	90%	90%	86%
Graffiti Wipe	20%	40%	70%	90%	55%
Blok-Guard® and Graffiti Control	Red Paint	Black Marker	Green Marker	Red Marker	% Avg. Removal
Fast Acting Stripper	100%	100%	100%	100%	100%
Graffiti Wipe	100%	100%	100%	100%	100%
“11C” Split-face CMU					
Untreated Control	Red Paint	Black Marker	Green Marker	Red Marker	% Avg. Removal
Fast Acting Stripper	50%	100%	90%	90%	83%
Graffiti Wipe	60%	80%	90%	90%	80%
Blok-Guard® and Graffiti Control	Red Paint	Black Marker	Green Marker	Red Marker	% Avg. Removal
Fast Acting Stripper	100%	100%	100%	100%	100%
Graffiti Wipe	90%	100%	100%	100%	98%
“12A” Split-face CMU					
Untreated Control	Red Paint	Black Marker	Green Marker	Red Marker	% Avg. Removal
Fast Acting Stripper	50%	95%	90%	95%	83%
Graffiti Wipe	50%	90%	90%	95%	81%
Blok-Guard® and Graffiti Control	Red Paint	Black Marker	Green Marker	Red Marker	% Avg. Removal
Fast Acting Stripper	95%	100%	100%	100%	99%
Graffiti Wipe	90%	100%	100%	100%	98%
“Natural” Split-face CMU					
Untreated Control	Red Paint	Black Marker	Green Marker	Red Marker	% Avg. Removal
Fast Acting Stripper	50%	95%	40%	50%	59%
Graffiti Wipe	50%	20%	40%	50%	40%
Blok-Guard® and Graffiti Control	Red Paint	Black Marker	Green Marker	Red Marker	% Avg. Removal
Fast Acting Stripper	90%	100%	95%	95%	95%
Graffiti Wipe	85%	100%	95%	95%	94%
“#14” Smooth-face CMU					
Untreated Control	Red Paint	Black Marker	Green Marker	Red Marker	% Avg. Removal
Fast Acting Stripper	85%	95%	95%	95%	93%
Graffiti Wipe	85%	50%	95%	95%	81%
Blok-Guard® and Graffiti Control	Red Paint	Black Marker	Green Marker	Red Marker	% Avg. Removal
Fast Acting Stripper	100%	100%	95%	95%	98%
Graffiti Wipe	100%	100%	95%	95%	98%



PALLET TAG PROGRAM LABORATORY REPORT



PROSOCO, Inc.

Page 43

TEST RESULTS – Graffiti Control

% Removal

“#67” Smooth-face CMU					
Untreated Control	Red Paint	Black Marker	Green Marker	Red Marker	% Avg. Removal
Fast Acting Stripper	90%	100%	90%	100%	95%
Graffiti Wipe	90%	100%	90%	100%	95%
Blok-Guard® and Graffiti Control	Red Paint	Black Marker	Green Marker	Red Marker	% Avg. Removal
Fast Acting Stripper	100%	100%	100%	100%	100%
Graffiti Wipe	100%	100%	100%	100%	100%
“Regular” Smooth-face CMU					
Untreated Control	Red Paint	Black Marker	Green Marker	Red Marker	% Avg. Removal
Fast Acting Stripper	85%	95%	50%	50%	70%
Graffiti Wipe	85%	50%	50%	50%	59%
Blok-Guard® and Graffiti Control	Red Paint	Black Marker	Green Marker	Red Marker	% Avg. Removal
Fast Acting Stripper	90%	100%	90%	95%	94%
Graffiti Wipe	100%	95%	90%	95%	95%
“#16 Brown” Split-face KMUC					
Untreated Control	Red Paint	Black Marker	Green Marker	Red Marker	% Avg. Removal
Fast Acting Stripper	50%	95%	70%	90%	76%
Graffiti Wipe	50%	90%	70%	90%	75%
Blok-Guard® and Graffiti Control	Red Paint	Black Marker	Green Marker	Red Marker	% Avg. Removal
Fast Acting Stripper	100%	100%	100%	100%	100%
Graffiti Wipe	100%	100%	100%	100%	100%
“#16 Charcoal” Split-face KMUC					
Untreated Control	Red Paint	Black Marker	Green Marker	Red Marker	% Avg. Removal
Fast Acting Stripper	50%	95%	80%	95%	80%
Graffiti Wipe	50%	50%	80%	95%	69%
Blok-Guard® and Graffiti Control	Red Paint	Black Marker	Green Marker	Red Marker	% Avg. Removal
Fast Acting Stripper	100%	100%	100%	100%	100%
Graffiti Wipe	100%	100%	100%	100%	100%
“#16 Natural” Split-face KMUC					
Untreated Control	Red Paint	Black Marker	Green Marker	Red Marker	% Avg. Removal
Fast Acting Stripper	90%	90%	60%	70%	78%
Graffiti Wipe	60%	20%	60%	70%	53%
Blok-Guard® and Graffiti Control	Red Paint	Black Marker	Green Marker	Red Marker	% Avg. Removal
Fast Acting Stripper	100%	100%	100%	100%	100%
Graffiti Wipe	100%	100%	100%	100%	100%



PALLET TAG PROGRAM LABORATORY REPORT

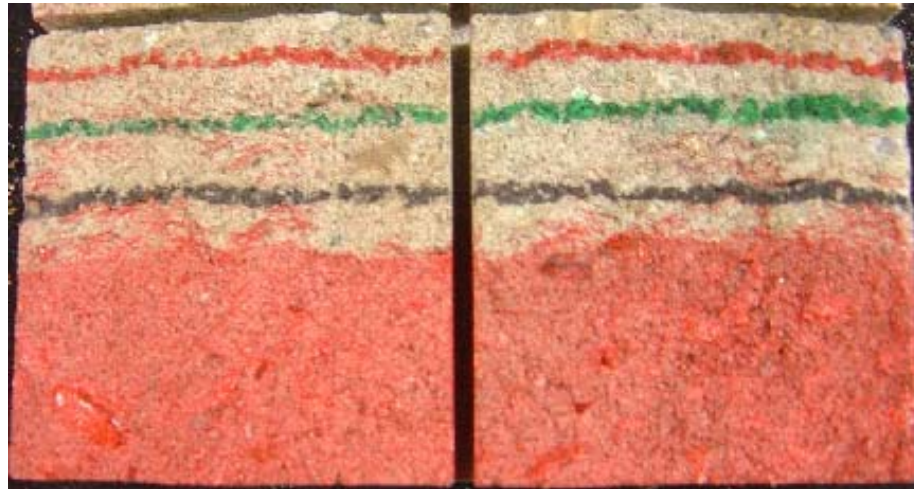


PROSOCO, Inc.

Page 44

PHOTOGRAPHS – Graffiti Control

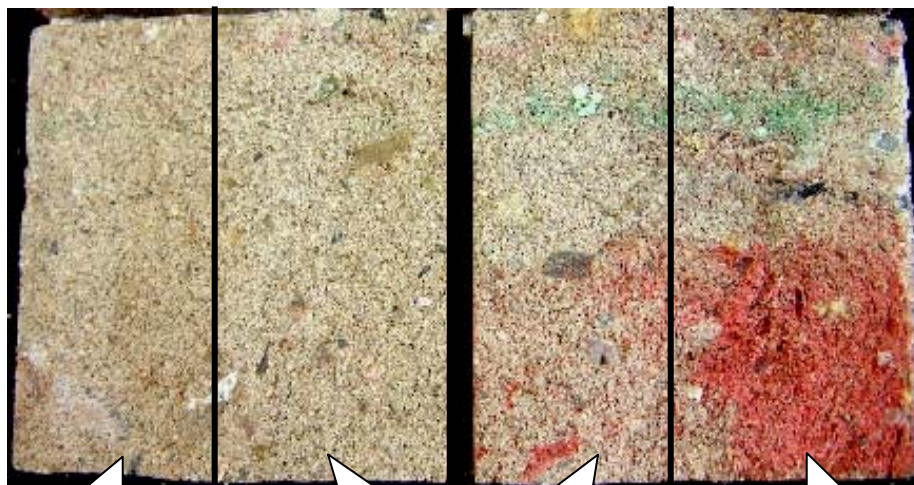
“6P” Split-face CMU Before Graffiti Removal



**Sure Klean® Weather Seal
Blok-Guard® and Graffiti
Control**

**Untreated
Control**

“6P” Split-face CMU After Graffiti Removal



**Sure Klean® Fast
Acting Stripper**

**Defacer Eraser®
Graffiti Wipe**

**Sure Klean® Fast
Acting Stripper**

**Defacer Eraser®
Graffiti Wipe**

**Sure Klean® Weather Seal
Blok-Guard® and Graffiti
Control**

Untreated Control



PALLET TAG PROGRAM LABORATORY REPORT



PROSOCO, Inc.

Page 45

CONCLUSIONS – Graffiti Control

Based upon laboratory evaluations, graffiti removal was improved when the submitted samples were treated with Sure Klean® Weather Seal Blok-Guard® and Graffiti Control prior to graffiti application. In addition, Sure Klean® Weather Seal Blok-Guard® and Graffiti Control enhanced the appearance of the CMU's and KMUC's.

RECOMMENDATIONS – GRAFFITI CONTROL

Recommendations for graffiti control treatment for each type of CMU and KMUC submitted by Gagne & Son Concrete Block, Belgrade, ME, are provided in the chart below. Recommendations are based on the treatment that proved most effective for providing graffiti repellency and the product that was most effective at removing the graffiti on all types submitted.

Block Type	Graffiti Repellent	Graffiti Removers
All Submitted CMU's and KMUC's	Sure Klean® Weather Seal Blok-Guard® and Graffiti Control	Sure Klean® Fast Acting Stripper OR Defacer Eraser® Graffiti Wipe

Apply all products in accordance with the manufacturer's recommendation provided on container labels and product data sheets. Because the severity of graffiti varies from location to location, on-site testing should be conducted to determine the most appropriate graffiti control product and procedure for a particular project.

For the most severe graffiti cases Sure Klean® Fast Acting Stripper is recommended for job-site testing. For mild graffiti cases, Defacer Eraser® Graffiti Wipe is recommended for job-site testing. See product literature for additional application and product information.



PALLET TAG PROGRAM LABORATORY REPORT



PROSOCO, Inc.

Page 46

SECTION F – STAIN REPELLENCY

These trials were conducted to determine the effectiveness of treatments in preventing food, oil, and miscellaneous staining on the submitted concrete pavers.

DESCRIPTION OF PRODUCTS EVALUATED - Stain Protection:

Stand Off® SLX100 Water & Oil Repellent - Combines water and oil repellency on most substrates to prevent staining by waterborne and oily substances. This modified “neat” silane system offers invisible protection and low volatility. The small molecular structure of SLX100 allows for maximum penetration at coverage rates higher than that of conventional silanes. Depth of penetration is controlled by the application rate (loading rate). This makes SLX100 ideal for protecting granite and other dense, color-sensitive surfaces.

Kitchen Products Evaluated:

Coca Cola
Ketchup
Mustard
Red wine
Balsamic Vinegar
Soy Sauce
Olive Oil
Wesson Oil
Coffee

Temperature:

ambient (~70°F)
ambient (~70°F)
ambient (~70°F)
ambient (~70°F)
ambient (~70°F)
ambient (~70°F)
ambient (~70°F)
(~250°F)
(~120°F)

SAMPLE PREPARATION – Stain Repellency

Samples were cleaned with Enviro Klean® 2010 All Surface Cleaner diluted with 10 parts water, allowed to dry and absorb atmospheric moisture for 24 hours prior to treatment. The method of application for the protective treatment consisted of a single, saturating application.



PALLET TAG PROGRAM LABORATORY REPORT



PROSOCO, Inc.

Page 47

TEST METHOD – Stain Repellency

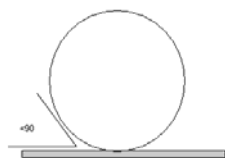
Surface Beading Evaluation

The food and oil products were applied to the test areas by using a dropper creating a bead 0.5 – 1.0 cm in diameter. The beading properties of the oils and liquids were visually evaluated within two minutes after application. The results are reported as a rating based on the angle of contact between the base of the droplet and the substrate. A rating of “1 or 2” indicated the smallest angle of contact ($<90^\circ$) which correlates to “above average” repellency. A rating of “3 or 4” indicates “average” repellency. A rating of “5 or greater” indicated that the liquid or oil quickly absorbed into the substrate and correlates to “below average” repellency.

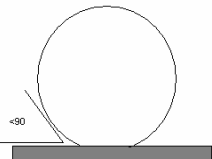
Note: Non-free flowing staining agents such as ketchup and mustard are applied in a globule and not evaluated for their beading properties.

Rating System (1-5)

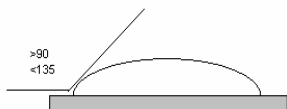
1. No wetting of contact area (no darkening); angle less than 90°



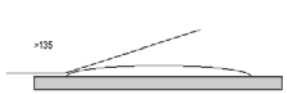
2. Wetting contained to the contact area (slight darkening); angle is less than 90°



3. Wetting contained to the contact area (slight darkening); angle is greater than 90° , but less than 135° .



4. Wetting beyond the contact area (darkening); angle is greater than 135°



5. Wetting beyond the contact area (darkening); angle is flat.

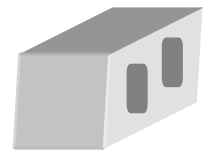


Stain Removal Evaluation

The soiling agents were allowed to dwell on the treated and untreated substrates for times of 24 hours, 4 hours, 1 hour, and 10 minutes. The test areas were then cleaned with Enviro Klean® 2010 All Surface Cleaner diluted 1 part concentrate to 10 parts fresh water and scrubbed under a stream of running water from a faucet. Samples were allowed to dry for 24 hours. Evaluation consisted of a visual examination of the tested areas to determine the percentage of staining removal.



PALLET TAG PROGRAM LABORATORY REPORT



PROSOCO, Inc.

Page 48

TEST RESULTS – Surface Beading

“#6 Beige” Concrete Paver									
	Coco-Cola	Ketchup	Mustard	Red Wine	Balsamic Vinegar	Soy Sauce	Olive Oil	Wesson Oil	Hot Coffee
Untreated Control	5	--	--	5	5	5	5	5	5
SLX100	2	--	--	2	2	2	2	2	2
“#6 Beige & Black” Concrete Paver									
	Coco-Cola	Ketchup	Mustard	Red Wine	Balsamic Vinegar	Soy Sauce	Olive Oil	Wesson Oil	Hot Coffee
Untreated Control	5	--	--	5	5	5	5	5	5
SLX100	2	--	--	2	2	2	2	2	2
“#6 Charcoal” Concrete Paver									
	Coco-Cola	Ketchup	Mustard	Red Wine	Balsamic Vinegar	Soy Sauce	Olive Oil	Wesson Oil	Hot Coffee
Untreated Control	5	--	--	5	5	5	5	5	5
SLX100	2	--	--	2	2	2	2	2	2
“#6 Natural” Concrete Paver									
	Coco-Cola	Ketchup	Mustard	Red Wine	Balsamic Vinegar	Soy Sauce	Olive Oil	Wesson Oil	Hot Coffee
Untreated Control	5	--	--	5	5	5	5	5	5
SLX100	2	--	--	2	2	2	2	2	2
“#6 Red” Concrete Paver									
	Coco-Cola	Ketchup	Mustard	Red Wine	Balsamic Vinegar	Soy Sauce	Olive Oil	Wesson Oil	Hot Coffee
Untreated Control	5	--	--	5	5	5	5	5	5
SLX100	2	--	--	2	2	2	2	2	2
“#6 Sandhill” Concrete Paver									
	Coco-Cola	Ketchup	Mustard	Red Wine	Balsamic Vinegar	Soy Sauce	Olive Oil	Wesson Oil	Hot Coffee
Untreated Control	5	--	--	5	5	5	5	5	5
SLX100	2	--	--	2	2	2	2	2	2



PALLET TAG PROGRAM LABORATORY REPORT



PROSOCO, Inc.

Page 49

TEST RESULTS – Staining Removal

% Removal

“#6 Beige” Concrete Paver

Untreated Control									
	Coca Cola	Ketchup	Mustard	Red Wine	Balsamic Vinegar	Soy Sauce	Olive Oil	Wesson Oil	Hot Coffee
24 hr	100%	10%	10%	70%	70%	70%	10%	10%	100%
4 hour	100%	100%*	20%*	70%	70%	70%	10%	10%	100%
1 hour	100%	100%*	100%*	70%	70%	70%	10%	10%	100%
10 min.	100%	100%*	100%*	70%	70%	70%	10%	10%	100%
Stand Off® SLX100 Water & Oil Repellent									
	Coca Cola	Ketchup	Mustard	Red Wine	Balsamic Vinegar	Soy Sauce	Olive Oil	Wesson Oil	Hot Coffee
24 hr	100%	100%*	100%*	100%	90%*	100%	80%	80%	100%
4 hour	100%	100%*	100%*	100%	90%*	100%	90%	90%	100%
1 hour	100%	100%*	100%*	100%	90%*	100%	95%	95%	100%
10 min.	100%	100%*	100%*	100%	90%*	100%	100%	100%	100%

“#6 Beige & Black” Concrete Paver

Untreated Control									
	Coca Cola	Ketchup	Mustard	Red Wine	Balsamic Vinegar	Soy Sauce	Olive Oil	Wesson Oil	Hot Coffee
24 hr	100%	10%	10%	100%	70%	70%	10%	10%	100%
4 hour	100%	100%*	100%*	100%	70%	70%	10%	10%	100%
1 hour	100%	100%*	100%*	100%	70%	70%	10%	10%	100%
10 min.	100%	100%*	100%*	100%	70%	70%	10%	10%	100%
Stand Off® SLX100 Water & Oil Repellent									
	Coca Cola	Ketchup	Mustard	Red Wine	Balsamic Vinegar	Soy Sauce	Olive Oil	Wesson Oil	Hot Coffee
24 hr	100%	100%	100%	100%	100%	100%	70%	70%	100%
4 hour	100%	100%	100%	100%	100%	100%	80%	80%	100%
1 hour	100%	100%	100%	100%	100%	100%	95%	90%	100%
10 min.	100%	100%	100%	100%	100%	100%	100%	90%	100%

* Indicates etching occurred due to the acidic nature of the staining agents.



PALLET TAG PROGRAM LABORATORY REPORT



PROSOCO, Inc.

Page 50

TEST RESULTS – Staining Removal

% Removal

“#6 Charcoal” Concrete Paver

Untreated Control									
	Coca Cola	Ketchup	Mustard	Red Wine	Balsamic Vinegar	Soy Sauce	Olive Oil	Wesson Oil	Hot Coffee
24 hr	100%	10%	10%	100%	100%	100%	10%	10%	100%
4 hour	100%	80%*	80%*	100%	100%	100%	10%	10%	100%
1 hour	100%	90%*	90%*	100%	100%	100%	10%	10%	100%
10 min.	100%	90%*	90%*	100%	100%	100%	10%	10%	100%
Stand Off® SLX100 Water & Oil Repellent									
	Coca Cola	Ketchup	Mustard	Red Wine	Balsamic Vinegar	Soy Sauce	Olive Oil	Wesson Oil	Hot Coffee
24 hr	100%	100%	100%	100%	100%	100%	80%	80%	100%
4 hour	100%	100%	100%	100%	100%	100%	80%	80%	100%
1 hour	100%	100%	100%	100%	100%	100%	90%	90%	100%
10 min.	100%	100%	100%	100%	100%	100%	90%	90%	100%

“#6 Natural” Concrete Paver

Untreated Control									
	Coca Cola	Ketchup	Mustard	Red Wine	Balsamic Vinegar	Soy Sauce	Olive Oil	Wesson Oil	Hot Coffee
24 hr	100%	100%*	10%	10%	10%*	10%	10%	10%	100%
4 hour	100%	100%*	30%	10%	10%*	10%	10%	10%	100%
1 hour	100%	100%*	100%*	10%	10%*	10%	10%	10%	100%
10 min.	100%	100%*	100%*	10%	10%*	10%	10%	10%	100%
Stand Off® SLX100 Water & Oil Repellent									
	Coca Cola	Ketchup	Mustard	Red Wine	Balsamic Vinegar	Soy Sauce	Olive Oil	Wesson Oil	Hot Coffee
24 hr	100%	100%*	100%*	90%	90%*	90%	85%	85%	100%
4 hour	100%	100%*	100%*	90%	90%*	90%	90%	90%	100%
1 hour	100%	100%*	100%*	100%	100%*	100%	95%	95%	100%
10 min.	100%	100%*	100%*	100%	100%*	100%	95%	95%	100%

* Indicates etching occurred due to the acidic nature of the staining agents.



PALLET TAG PROGRAM LABORATORY REPORT



PROSOCO, Inc.

Page 51

TEST RESULTS – Staining Removal

% Removal

“#6 Red” Concrete Paver

Untreated Control									
	Coca Cola	Ketchup	Mustard	Red Wine	Balsamic Vinegar	Soy Sauce	Olive Oil	Wesson Oil	Hot Coffee
24 hr	100%	10%	10%	10%	10%	10%	10%	10%	100%
4 hour	100%	100%*	100%*	10%	10%	10%	10%	10%	100%
1 hour	100%	100%*	100%*	10%	10%	10%	10%	10%	100%
10 min.	100%	100%*	100%*	10%	10%	10%	10%	10%	100%
Stand Off® SLX100 Water & Oil Repellent									
	Coca Cola	Ketchup	Mustard	Red Wine	Balsamic Vinegar	Soy Sauce	Olive Oil	Wesson Oil	Hot Coffee
24 hr	100%	100%*	100%*	100%	100%*	100%	90%	80%	100%
4 hour	100%	100%*	100%*	100%	100%*	100%	95%	90%	100%
1 hour	100%	100%*	100%*	100%	100%*	100%	100%	100%	100%
10 min.	100%	100%*	100%*	100%	100%*	100%	100%	100%	100%

“#6 Sandhill” Concrete Paver

Untreated Control									
	Coca Cola	Ketchup	Mustard	Red Wine	Balsamic Vinegar	Soy Sauce	Olive Oil	Wesson Oil	Hot Coffee
24 hr	100%	10%	10%	100%	100%*	100%	10%	10%	100%
4 hour	100%	100%*	100%*	100%	100%*	100%	10%	10%	100%
1 hour	100%	100%*	100%*	100%	100%*	100%	10%	10%	100%
10 min.	100%	100%*	100%*	100%	100%*	100%	10%	10%	100%
Stand Off® SLX100 Water & Oil Repellent									
	Coca Cola	Ketchup	Mustard	Red Wine	Balsamic Vinegar	Soy Sauce	Olive Oil	Wesson Oil	Hot Coffee
24 hr	100%	100%*	100%*	100%	100%*	100%	90%	90%	100%
4 hour	100%	100%*	100%*	100%	100%*	100%	90%	90%	100%
1 hour	100%	100%*	100%*	100%	100%*	100%	95%	95%	100%
10 min.	100%	100%*	100%*	100%	100%*	100%	95%	95%	100%

* Indicates etching occurred due to the acidic nature of the staining agents.



PALLET TAG PROGRAM LABORATORY REPORT



PROSOCO, Inc.

Page 52

PHOTOGRAPHS- Stain Results

"#6 Charcoal" Concrete Paver; Stains Applied



**Stand Off[®]
SLX100 Water &
Oil Repellent**

Untreated Control

"#6 Charcoal" Concrete Paver; Stains Removed



**Stand Off[®]
SLX100 Water &
Oil Repellent**

Untreated Control



PALLET TAG PROGRAM LABORATORY REPORT



PROSOCO, Inc.

Page 53

CONCLUSIONS – Stain Repellency

Based upon laboratory evaluations, Stand Off® SLX100 Water & Oil Repellent improved the surface beading of the submitted concrete pavers. In addition, Stand Off® SLX100 Water & Oil Repellent was effective in repelling the staining agents from the submitted concrete pavers.

RECOMMENDATIONS – Stain Repellency

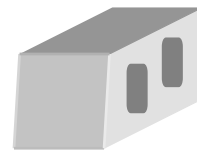
Recommendations for stain resistance treatment for each type of concrete paver submitted by Gagne and Son Concrete Block, Belgrade, ME, are provided in the charts below. Recommendations are based on the treatments that proved most effective for providing stain repellency on all of the submitted concrete pavers.

Sample	Stain Repellent	Maintenance Cleaner
All Submitted Concrete Pavers	Stand Off® SLX100 Water & Oil Repellent	Enviro Klean® 2010 All Surface Cleaner (1:10)

Apply all products in accordance with the manufacturer's recommendation provided on container labels and product data sheets. On-site testing should be conducted to determine the most appropriate product and procedures for a particular project. See product literature for additional application and product information.



PALLET TAG PROGRAM LABORATORY REPORT



PROSOCO, Inc.

Page 54

SECTION G – COLOR ENHANCEMENT:

DESCRIPTION OF PRODUCTS EVALUATED – Color Enhancement:

Sure Klean® Paver Enhancer – A solvent-based blend of high-quality siloxanes modified to provide excellent water repellency and color enhancement to interlocking concrete, fired clay, porous tile and many types of natural stone surfaces. Paver Enhancer penetrates and reacts with the surface to form a chemical bond, providing long-term durability, alkali resistance and superior breatheability.

TEST METHOD – COLOR ENHANCEMENT

Sure Klean® Paver Enhancer was applied in a single saturating application to the submitted concrete pavers. After 24 hours, a visual observation was made, comparing the treated sample to the untreated sample.



PALLET TAG PROGRAM LABORATORY REPORT



PROSOCO, Inc.

Page 55

TEST RESULTS- COLOR ENHANCEMENT

Paver Name	Sure Klean® Paver Enhancer
"#6 Beige"	3
"#6 Beige & Black"	2
"#6 Charcoal"	3
"#6 Natural"	3
"#6 Red"	3
"#6 Sandhill"	2

Scale: 0- No enhancement; dull

1- Slight Enhancement

2- Moderate Enhancement

3- Significant Enhancement

PHOTOGRAPH – Color Enhancement

"#6 Charcoal" Concrete Paver



**Untreated
Control**

**Sure Klean®
Paver Enhancer**



PALLET TAG PROGRAM LABORATORY REPORT



PROSOCO, Inc.

Page 56

RECOMMENDATIONS – Color Enhancement

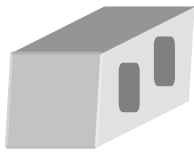
Recommendations for color enhancement for each type of concrete paver submitted by Gagne & Son Concrete Block, Belgrade, ME, are provided in the chart below. Recommendations are based on the treatment that proved most effective in providing color enhancement to the samples.

Substrate	Color Enhancer
All Submitted Concrete Pavers	Sure Klean® Paver Enhancer

Apply all products in accordance with the manufacturer's recommendation provided on container labels and product data sheets. On-site testing should be conducted to determine the most appropriate product and procedures for a particular project. See product literature for additional application and product information.

Christopher A. Moore
Project Testing Laboratory Technician

CAM



Laboratory Report

Pallet Tag Program Evaluation

**Gagne & Son Concrete Block
Belgrade, ME**

Project No. 0409-08 PTP

Prepared For:

**Gagne & Son Concrete Block
28 Old Rte. 27 Rd.
Belgrade, ME 04917**

Prepared By:



***PROSOCO, Inc.
January 2005***