



PALLET TAG PROGRAM LABORATORY REPORT



PROSOCO, Inc.

Page 1

TABLE OF CONTENTS

| | |
|---------------------------------------------------------|-------|
| SAMPLES SUBMITTED..... | 2 |
| PURPOSE OF TEST | 3-4 |
| PRODUCTS EVALUATED..... | 5 |
| SECTION A – CLEANING INTEGRALLY COLORED CMU's | |
| DESCRIPTION OF PRODUCTS EVALUATED | 6 |
| TEST METHOD | 6 |
| TEST RESULTS | 7-8 |
| PHOTOGRAPHS OF CMU CLEANING..... | 9-11 |
| CONCLUSIONS..... | 12 |
| RECOMMENDATIONS..... | 12 |
| SECTION B – COLOR UNIFORMITY | |
| DESCRIPTION OF PRODUCTS EVALUATED | 13 |
| TEST METHOD | 13 |
| TEST RESULTS | 14-16 |
| PHOTOGRAPHS OF CMU COLOR UNIFORMITY TESTING..... | 17 |
| CONCLUSIONS..... | 18 |
| RECOMMENDATIONS..... | 18 |
| SECTION C - PROTECTIVE WATER REPELLENTS | |
| DESCRIPTION OF PRODUCTS EVALUATED | 19 |
| TEST METHODS..... | 19 |
| TEST RESULTS | 20-21 |
| PHOTOGRAPHS OF CMU WATER REPELLENCY..... | 22 |
| CONCLUSIONS..... | 23 |
| RECOMMENDATIONS..... | 23 |
| SECTION D – GRAFFITI CONTROL | |
| DESCRIPTION OF PRODUCTS EVALUATED | 24 |
| TEST METHOD | 25 |
| TEST RESULTS | 26-28 |
| PHOTOGRAPH OF CMU GRAFFITI TESTING..... | 29 |
| CONCLUSIONS..... | 30 |
| RECOMMENDATIONS..... | 30 |
| SECTION E – COLOR ENHANCEMENT | |
| DESCRIPTION OF PRODUCTS EVALUATED | 31 |
| TEST METHODS..... | 31 |
| TEST RESULTS | 32 |
| PHOTOGRAPHS..... | 32 |
| RECOMMENDATIONS..... | 33 |
| SECTION F – ADVERSE EFFECTS | |
| DESCRIPTION OF PRODUCTS EVALUATED | 34 |
| TEST METHODS..... | 34 |
| TEST RESULTS | 35 |
| PHOTOGRAPHS..... | 35 |
| RECOMMENDATIONS..... | 36 |
| ATTACHMENTS | |
| Technical Services TECH Note RILEM Tube Test Procedures | |
| Product Data literature for all products evaluated | |



PALLET TAG PROGRAM LABORATORY REPORT



PROSOCO, Inc.

Page 2

FOR: Ed Nagel
cc: Paul Tessier

SUBJECT: Best Block Company
Littleton, CO

DATE: September 20, 2004

PROJECT: PTP 0408-11

SAMPLES SUBMITTED: Four types of CMU's, each with a split-face, smooth-face, and ground-face

| Block | Color | Name | Size |
|-------------------|-------------|---------------------|---------------|
| "Split-face" CMU | Light Brown | "#958" | 16" x 8" x 4" |
| "Smooth-face" CMU | Light Brown | "#958" | |
| "Ground-face" CMU | Light Brown | "#958" | |
| "Split-face" CMU | White | "WB/Western Beige" | |
| "Smooth-face" CMU | White | "WB/Western Beige" | |
| "Ground-face" CMU | White | "WB/Western Beige" | |
| "Split-face" CMU | Brown | "LB/Lakewood Brown" | |
| "Smooth-face" CMU | Brown | "LB/Lakewood Brown" | |
| "Ground-face" CMU | Brown | "LB/Lakewood Brown" | |
| "Split-face" CMU | Rose | "SR/Snake River" | |
| "Smooth-face" CMU | Rose | "SR/Snake River" | |
| "Ground-face" CMU | Rose | "SR/Snake River" | |

Submitted by: Ed Nagel



PALLET TAG PROGRAM LABORATORY REPORT



PROSOCO, Inc.

Page 3

PURPOSE OF TESTING:

Four types of CMU's each with a split-face, smooth-face, and ground-face, all with large, small and fine aggregate were submitted for testing using PROSOCO's new construction cleaning, water repellent products, graffiti control, and color enhancement products.

A. Cleaning Concrete Masonry Units: Sure Klean® Custom Masonry Cleaner and Sure Klean® Burnished Custom Masonry Cleaner were evaluated for removal of laboratory applied mortar.

To simulate new construction soiling, all concrete masonry units (CMU's) are placed on a bench with finished surface facing upward. Hollow cylinders measuring 50 mm in diameter and 75 mm tall are positioned on top of each CMU and filled with a wet mixture of Ash Grove® Type S mortar. The wet, mortar-filled cylinder is allowed to remain in contact with the CMU for 10 minutes before removal.

Heavy deposits of mortar are removed with dry scraping after 24 hours. Prepared cleaning solutions are then evaluated for their effectiveness in removing residual Ash Grove® Type S mortar staining after 3 days, 7 days, and 14 days of curing*.

B. Color Uniformity Testing* - Sure Klean® Custom Masonry Cleaner and Sure Klean® Burnished Custom Masonry Cleaner were evaluated at various dilutions to determine the optimal concentration of cleaner that leaves the external surface looking most like the natural through-body color of the CMU. Color uniformity was evaluated by comparing aggregate exposure and surface pigment alternation/removal of each cleaned surface compared to the natural through-body color of the CMU.

Aggregate Exposure is the visual examination comparing aggregate exposure of the interior, through-body section of CMU to surfaces cleaned with selected product(s) at given dilutions.

Surface Pigment Alteration/Removal* is the visual examination comparing the pigmentation of the interior, through-body section of the CMU to surfaces cleaned with selected product(s) at given dilutions.

The following is the scale used for reporting results of both categories:

- | | |
|----------------------------------------|---------------------------------------|
| 0 – Worst match to through-body | 3 – Good match to through-body |
| 1 – Poor match to through-body | 4 – Best match to through-body |
| 2 – Fair match to through-body | |

NOTE: When cleaning integrally colored CMU.

Integrally colored concrete masonry units (CMU's) frequently have high amounts of pigments concentrated on the surface of the cured concrete unit. Variation of surface pigment concentrations from one CMU to the next creates a blotchy appearance in the completed wall. Allowed to remain on the surface of the CMU, the weakly bound pigment will weather and streak, further detracting from the appearance of the completed CMU wall.

In addition to removing excess mortar and construction related soiling, the goal of any cleaning operation undertaken on integrally colored CMU should include removal of unnaturally high concentrations of surface pigment. By revealing the natural through-body color on the integrally colored unit, the overall color uniformity and weathering resistance of the completed CMU wall is improved.



PALLET TAG PROGRAM LABORATORY REPORT



PROSOCO, Inc.

Page 4

C. Protective Water Repellents – Sure Klean® Weather Seal Blok-Guard® & Graffiti Control and Sure Klean® Weather Seal Siloxane WB Concentrate (1:9) were evaluated for their ability to provide water repellency to the submitted samples.

D. Graffiti Control – Sure Klean® Weather Seal Blok-Guard® & Graffiti Control was evaluated for its ability to control graffiti on the submitted samples. Sure Klean® Fast Acting Stripper and Defacer Eraser® Graffiti Wipe were evaluated for their ability to remove graffiti from the submitted samples.

E. Color Enhancement – Sure Klean® Burnished Block Sealer was evaluated for its ability to provide color and sheen enhancement on the submitted ground-face samples.

F. Adverse Effects: Sure Klean® Burnished Custom Masonry Cleaner was evaluated to determine if it creates any adverse effects when used on the surface of the ground-face CMU's after treatment with Sure Klean® Burnished Block Sealer.



PALLET TAG PROGRAM LABORATORY REPORT



PROSOCO, Inc.

Page 5

PRODUCTS EVALUATED FOR CLEANING AND COLOR UNIFORMITY

| Block Type | Product | Dilution |
|--------------------------------------|----------------------------------------------|---------------|
| All Split-face and Smooth-face CMU's | Sure Klean® Custom Masonry Cleaner | 1:2, 1:4, 1:6 |
| All Submitted CMU's | Sure Klean® Burnished Custom Masonry Cleaner | 1:2, 1:3 |

WATER REPELLENT PRODUCTS EVALUATED

| Block Type | Product | Dilution |
|---------------------|---------------------------------------------------------|-------------|
| All Submitted CMU's | Sure Klean® Weather Seal Blok-Guard® & Graffiti Control | Concentrate |
| | Sure Klean® Weather Seal Siloxane WB Concentrate | 1:9 |

GRAFFITI CONTROL PRODUCTS EVALUATED

| Block Type | Product | Dilution |
|---------------------|---------------------------------------------------------|-------------|
| All Submitted CMU's | Sure Klean® Weather Seal Blok-Guard® & Graffiti Control | Concentrate |

GRAFFITI REMOVAL PRODUCTS EVALUATED

| Block Type | Product |
|---------------------|----------------------------------|
| All Submitted CMU's | Sure Klean® Fast Acting Stripper |
| | Defacer Eraser® Graffiti Wipe |

COLOR ENHANCEMENT AND SHEEN PRODUCTS EVALUATED

| Block Type | Product |
|-----------------------|------------------------------------|
| All Ground-face CMU's | Sure Klean® Burnished Block Sealer |

ADVERSE EFFECTS PRODUCTS EVALUATED

| Block Type | Product | Dilution |
|-----------------------------------------------------------------------|----------------------------------------------|----------|
| All Ground-face CMU's Treated With Sure Klean® Burnished Block Sealer | Sure Klean® Burnished Custom Masonry Cleaner | 1:3 |



PALLET TAG PROGRAM LABORATORY REPORT



SECTION A – CLEANING INTEGRALLY COLORED CMU's

DESCRIPTION OF PRODUCTS EVALUATED

These cleaning trials were conducted to determine the optimal cleaning/cure time combination.

Sure Klean® Custom Masonry Cleaner – A general purpose, concentrated acidic cleaner for most custom masonry and colored concrete. Removes concrete splashes, excess mortar, mud, heavy efflorescence and surface soiling, leaving the masonry clean and uniform with no acid burning or streaking. Liquid concentrate for dilution with 2-6 parts water. Apply by brush or low-pressure spray.

Sure Klean® Burnished Custom Masonry Cleaner – A general purpose, non-etching acidic cleaner for most custom masonry and colored concrete. Removes rust, mud, oil, atmospheric dirt, mortar smears and other stains without altering the surface texture, while also adding depth to colors and brightening white matrices and exposed aggregate. Liquid concentrate for dilution with 2-3 parts water. Apply by brush or low-pressure spray.

TEST METHOD – Cleaning

Dilution ratios refer to mixtures of parts concentrated cleaner : parts fresh water. Chemical cleaners were evaluated using the following procedure:

1. Pre-wet the surface with water.
2. Apply each cleaner at the appropriate dilutions.
3. Allow appropriate dwell time for each cleaner:
 - Custom Masonry Cleaner 3 minutes
 - Burnished Custom Masonry Cleaner 3-5 minutes
4. Reapply the products and moderately agitate with a brush.
5. Pressure rinse thoroughly.*
6. Allow the surface to dry for at least 18 hours and visually examine.

*Pressure rinsing was conducted at approximately 1300 psi with a warm water flow rate of 1.9 gallons per minute.



PALLET TAG PROGRAM LABORATORY REPORT



PROSOCO, Inc.

Page 7

TEST RESULTS – Cleaning

% Removal of Type S Mortar

| “#958 Split-face” CMU | | | | |
|-------------------------------------------|-----------------|--------------|--------------|---------------|
| Product | Dilution | 3 day | 7 day | 14 day |
| Custom Masonry Cleaner | 1:2 | 95% | 95% | 95% |
| Custom Masonry Cleaner | 1:4 | 95% | 90% | 99% |
| Custom Masonry Cleaner | 1:6 | 85% | 95% | 95% |
| Burnished Custom Masonry Cleaner | 1:2 | 85% | 85% | 90% |
| Burnished Custom Masonry Cleaner | 1:3 | 85% | 85% | 90% |
| “#958 Smooth-face” CMU | | | | |
| Product | Dilution | 3 day | 7 day | 14 day |
| Custom Masonry Cleaner | 1:2 | 99% | 99% | 99% |
| Custom Masonry Cleaner | 1:4 | 99% | 99% | 99% |
| Custom Masonry Cleaner | 1:6 | 95% | 99% | 99% |
| Burnished Custom Masonry Cleaner | 1:2 | 95% | 99% | 95% |
| Burnished Custom Masonry Cleaner | 1:3 | 95% | 99% | 95% |
| “#958 Ground-face” CMU | | | | |
| Product | Dilution | 3 day | 7 day | 14 day |
| Burnished Custom Masonry Cleaner | 1:2 | 100% | 100% | 99% |
| Burnished Custom Masonry Cleaner | 1:3 | 100% | 100% | 99% |
| “WB/Western Beige Split-face” CMU | | | | |
| Product | Dilution | 3 day | 7 day | 14 day |
| Custom Masonry Cleaner | 1:2 | 99% | 95% | 95% |
| Custom Masonry Cleaner | 1:4 | 95% | 95% | 95% |
| Custom Masonry Cleaner | 1:6 | 95% | 95% | 90% |
| Burnished Custom Masonry Cleaner | 1:2 | 95% | 85% | 80% |
| Burnished Custom Masonry Cleaner | 1:3 | 95% | 85% | 80% |
| “WB/Western Beige Smooth-face” CMU | | | | |
| Product | Dilution | 3 day | 7 day | 14 day |
| Custom Masonry Cleaner | 1:2 | 95% | 95% | 95% |
| Custom Masonry Cleaner | 1:4 | 95% | 95% | 90% |
| Custom Masonry Cleaner | 1:6 | 95% | 95% | 90% |
| Burnished Custom Masonry Cleaner | 1:2 | 90% | 95% | 95% |
| Burnished Custom Masonry Cleaner | 1:3 | 90% | 95% | 90% |
| “WB/Western Beige Ground-face” CMU | | | | |
| Product | Dilution | 3 day | 7 day | 14 day |
| Burnished Custom Masonry Cleaner | 1:2 | 100% | 100% | 99% |
| Burnished Custom Masonry Cleaner | 1:3 | 100% | 100% | 99% |



PALLET TAG PROGRAM LABORATORY REPORT



TEST RESULTS – Cleaning

% Removal of Type S Mortar

| “LB/Lakewood Brown Split-face” CMU | | | | |
|--------------------------------------------|-----------------|--------------|--------------|---------------|
| Product | Dilution | 3 day | 7 day | 14 day |
| Custom Masonry Cleaner | 1:2 | 99% | 99% | 90% |
| Custom Masonry Cleaner | 1:4 | 99% | 99% | 90% |
| Custom Masonry Cleaner | 1:6 | 95% | 99% | 90% |
| Burnished Custom Masonry Cleaner | 1:2 | 95% | 95% | 90% |
| Burnished Custom Masonry Cleaner | 1:3 | 90% | 90% | 90% |
| “LB/Lakewood Brown Smooth-face” CMU | | | | |
| Product | Dilution | 3 day | 7 day | 14 day |
| Custom Masonry Cleaner | 1:2 | 95% | 95% | 99% |
| Custom Masonry Cleaner | 1:4 | 95% | 95% | 99% |
| Custom Masonry Cleaner | 1:6 | 95% | 95% | 95% |
| Burnished Custom Masonry Cleaner | 1:2 | 95% | 95% | 95% |
| Burnished Custom Masonry Cleaner | 1:3 | 95% | 95% | 90% |
| “LB/Lakewood Brown Ground-face” CMU | | | | |
| Product | Dilution | 3 day | 7 day | 14 day |
| Burnished Custom Masonry Cleaner | 1:2 | 99% | 99% | 99% |
| Burnished Custom Masonry Cleaner | 1:3 | 99% | 99% | 99% |
| “SR/Snake River Split-face” CMU | | | | |
| Product | Dilution | 3 day | 7 day | 14 day |
| Custom Masonry Cleaner | 1:2 | 95% | 95% | 95% |
| Custom Masonry Cleaner | 1:4 | 90% | 95% | 90% |
| Custom Masonry Cleaner | 1:6 | 90% | 90% | 90% |
| Burnished Custom Masonry Cleaner | 1:2 | 85% | 85% | 85% |
| Burnished Custom Masonry Cleaner | 1:3 | 80% | 85% | 85% |
| “SR/Snake River Smooth-face” CMU | | | | |
| Product | Dilution | 3 day | 7 day | 14 day |
| Custom Masonry Cleaner | 1:2 | 95% | 99% | 99% |
| Custom Masonry Cleaner | 1:4 | 90% | 99% | 99% |
| Custom Masonry Cleaner | 1:6 | 90% | 99% | 99% |
| Burnished Custom Masonry Cleaner | 1:2 | 99% | 95% | 95% |
| Burnished Custom Masonry Cleaner | 1:3 | 99% | 95% | 95% |
| “SR/Snake River Ground-face” CMU | | | | |
| Product | Dilution | 3 day | 7 day | 14 day |
| Burnished Custom Masonry Cleaner | 1:2 | 100% | 100% | 100% |
| Burnished Custom Masonry Cleaner | 1:3 | 100% | 100% | 100% |

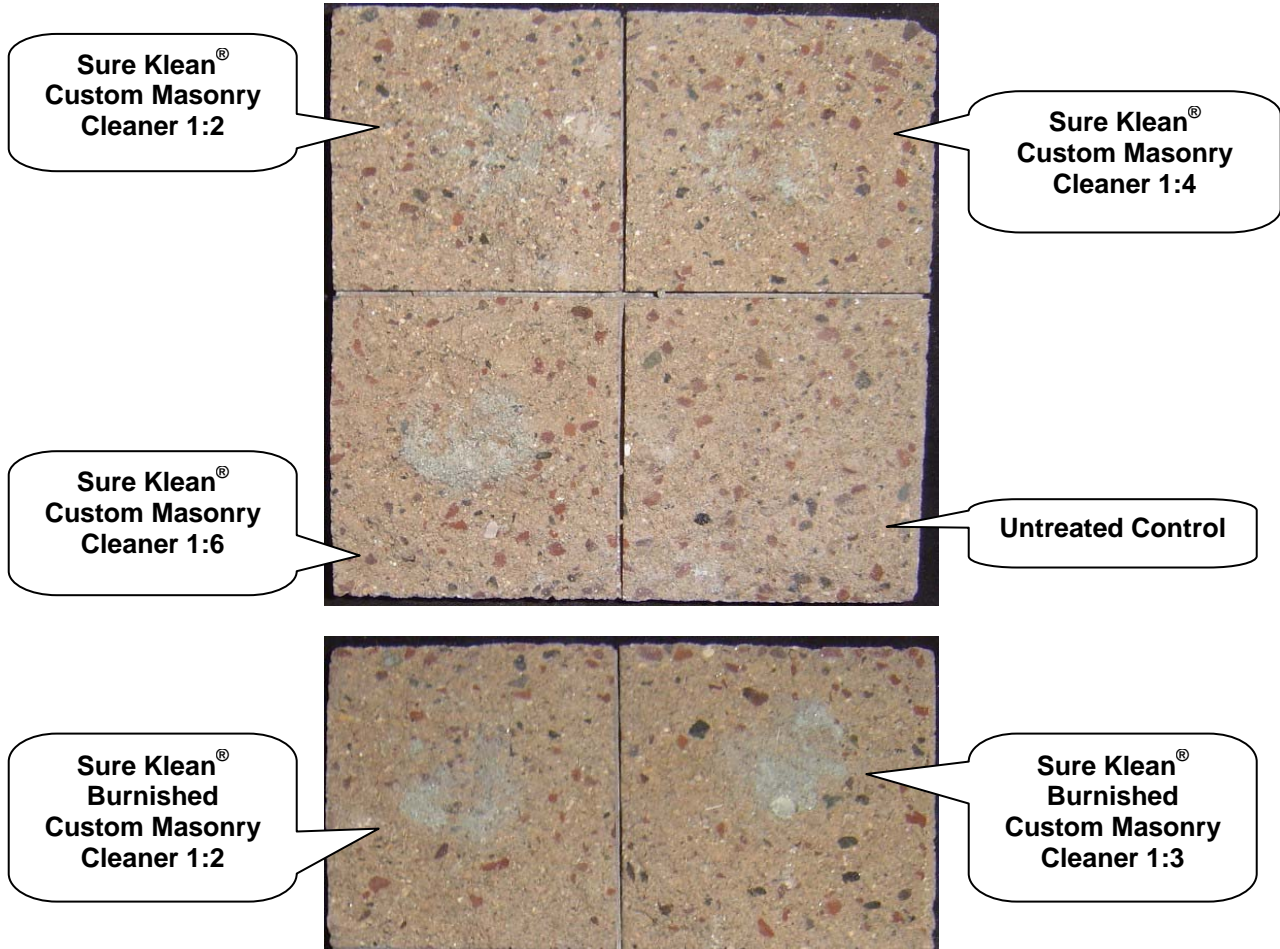


PALLET TAG PROGRAM LABORATORY REPORT



PHOTOGRAPHS- Cleaning

"#958 Split-face" CMU; 3 Day Cleaning



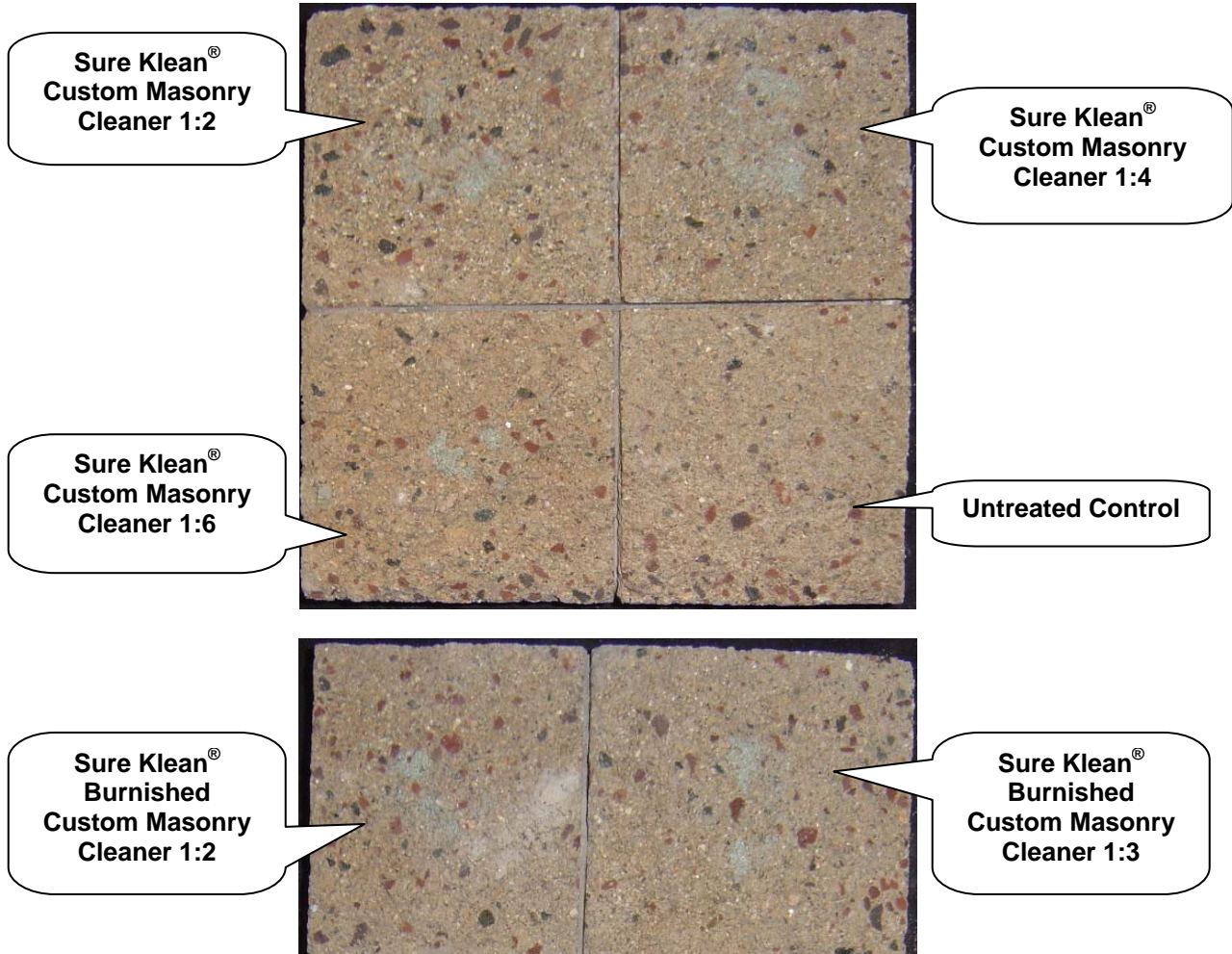


PALLET TAG PROGRAM LABORATORY REPORT



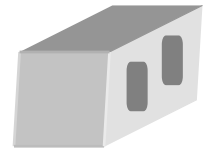
PHOTOGRAPHS- Cleaning

"#958 Split-face" CMU; 7 Day Cleaning



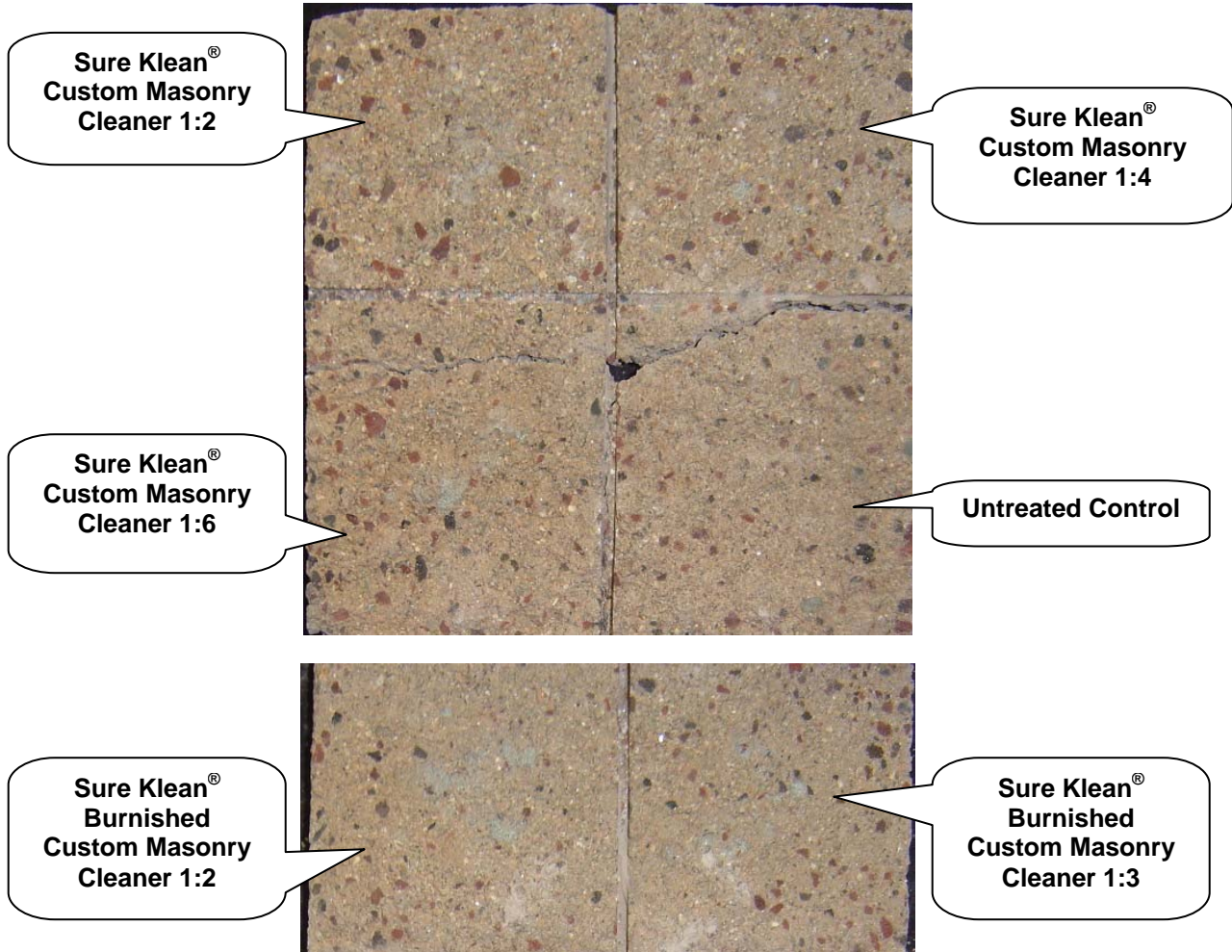


PALLET TAG PROGRAM LABORATORY REPORT



PHOTOGRAPHS- Cleaning

"#958 Split-face" CMU; 14 Day Cleaning





PALLET TAG PROGRAM LABORATORY REPORT



PROSOCO, Inc.

Page 12

CONCLUSIONS – Cleaning

Based on the test data, all of the submitted block samples were efficiently cleaned with a dilution of the selected PROSOCO Inc. cleaning product. Use higher concentrations and surface agitation to maximize aggregate exposure. Use low concentration and surface agitation to minimize aggregate exposure.

All dilutions of Sure Klean[®] Custom Masonry Cleaner and Sure Klean[®] Burnished Custom Masonry Cleaner tested affected the substrate in a similar manner, removing slight to heavy concentrations of pigmented matrix from the blocks, exposing small and large aggregate, and enhancing the natural appearance of the integrally colored concrete masonry unit.

RECOMMENDED PRODUCTS AND DILUTIONS – CLEANING

Recommendations for cleaning for each type of CMU submitted by Best Block Company, Littleton, CO, are provided in the chart below. Recommendations are based on the optimum dilution for complete removal of mortar.

| Block | New Construction Cleaning (Type S mortar, 14 day) |
|--------------------------------------|----------------------------------------------------------------|
| All Split-face and Smooth-face CMU's | Sure Klean [®] Custom Masonry Cleaner (1:2) |
| All Ground-face CMU's | Sure Klean [®] Burnished Custom Masonry Cleaner (1:3) |

The most appropriate cleaner and dilution should be determined on the specific job-site, and will be dependent primarily on the nature and severity of soiling present at that location. Pressure rinsing equipment providing at least 400 psi at 4-6 gpm delivered through a 15-40 degree fan spray often produces best cleaning results.

Apply all products in accordance with the manufacturer's recommendation provided on container labels and product data sheets. On-site testing should be conducted to determine the most appropriate cleaning product and procedures for a particular project. See product literature for additional application and product information.



PALLET TAG PROGRAM LABORATORY REPORT



SECTION B – COLOR UNIFORMITY:

DESCRIPTION OF PRODUCTS EVALUATED – Color Uniformity:

Sure Klean® Custom Masonry Cleaner – A general purpose, concentrated acidic cleaner for most custom masonry and colored concrete. Removes concrete splashes, excess mortar, mud, heavy efflorescence and surface soiling, leaving the masonry clean and uniform with no acid burning or streaking. Liquid concentrate for dilution with 2-6 parts water. Apply by brush or low-pressure spray.

Sure Klean® Burnished Custom Masonry Cleaner – A general purpose, non-etching acidic cleaner for most custom masonry and colored concrete. Removes rust, mud, oil, atmospheric dirt, mortar smears and other stains without altering the surface texture, while also adding depth to colors and brightening white matrices and exposed aggregate. Liquid concentrate for dilution with 2-3 parts water. Apply by brush or low-pressure spray.

TEST METHOD – Color Uniformity Testing:

Dilution ratios refer to mixtures of parts concentrated cleaner: parts fresh water. Chemical cleaners were evaluated using the following procedure:

1. Prewet the surface with water.
2. Apply each cleaner at the appropriate dilutions.
3. Allow appropriate dwell time, as specified.
 - Custom Masonry Cleaner..... 3 minutes
 - Burnished Custom Masonry Cleaner3-5 minutes
4. Reapply the products and moderately agitate with a brush.
5. Pressure rinse thoroughly.*
6. Allow the sample to dry for at least 18 hours and visually examine.
7. Break the sample in half and compare the through-body surfaces to the cleaned surfaces for the best match.

*Pressure rinsing was conducted at approximately 1300 psi with a warm water flow rate of 1.9 gallons per minute.



PALLET TAG PROGRAM LABORATORY REPORT



TEST RESULTS – Color Uniformity

| | | | |
|-----------------------------------|----------|-------------------------------------------|------------------------------------|
| Substrate: Split-face CMU | | Pigment Color: “#958” | |
| Product | Dilution | Aggregate Exposure | Surface Pigment Alteration/Removal |
| Custom Masonry Cleaner | 1:2 | 4 | 4 |
| Custom Masonry Cleaner | 1:4 | 4 | 4 |
| Custom Masonry Cleaner | 1:6 | 4 | 4 |
| Burnished Custom Masonry Cleaner | 1:2 | 4 | 4 |
| Burnished Custom Masonry Cleaner | 1:3 | 4 | 4 |
| Substrate: Smooth-face CMU | | Pigment Color: “#958” | |
| Product | Dilution | Aggregate Exposure | Surface Pigment Alteration/Removal |
| Custom Masonry Cleaner | 1:2 | 4 | 4 |
| Custom Masonry Cleaner | 1:4 | 4 | 4 |
| Custom Masonry Cleaner | 1:6 | 4 | 4 |
| Burnished Custom Masonry Cleaner | 1:2 | 4 | 4 |
| Burnished Custom Masonry Cleaner | 1:3 | 4 | 4 |
| Substrate: Ground-face CMU | | Pigment Color: “#958” | |
| Product | Dilution | Aggregate Exposure | Surface Pigment Alteration/Removal |
| Burnished Custom Masonry Cleaner | 1:2 | 4 | 4 |
| Burnished Custom Masonry Cleaner | 1:3 | 4 | 4 |
| Substrate: Split-face CMU | | Pigment Color: “W/B Western Beige” | |
| Product | Dilution | Aggregate Exposure | Surface Pigment Alteration/Removal |
| Custom Masonry Cleaner | 1:2 | 4 | 4 |
| Custom Masonry Cleaner | 1:4 | 4 | 4 |
| Custom Masonry Cleaner | 1:6 | 4 | 4 |
| Burnished Custom Masonry Cleaner | 1:2 | 4 | 4 |
| Burnished Custom Masonry Cleaner | 1:3 | 4 | 4 |
| Substrate: Smooth-face CMU | | Pigment Color: “W/B Western Beige” | |
| Product | Dilution | Aggregate Exposure | Surface Pigment Alteration/Removal |
| Custom Masonry Cleaner | 1:2 | 4 | 4 |
| Custom Masonry Cleaner | 1:4 | 4 | 4 |
| Custom Masonry Cleaner | 1:6 | 4 | 4 |
| Burnished Custom Masonry Cleaner | 1:2 | 4 | 4 |
| Burnished Custom Masonry Cleaner | 1:3 | 4 | 4 |

Scale used for reporting results of both categories

- 0 – **Worst** match to through-body
- 1 – **Poor** match to through-body
- 2 – **Fair** match to through-body

- 3 – **Good** match to through-body
- 4 – **Best** match to through-body



PALLET TAG PROGRAM LABORATORY REPORT



TEST RESULTS – Color Uniformity

| | | | |
|-----------------------------------|----------|-------------------------------------------|------------------------------------|
| Substrate: Ground-face CMU | | Pigment Color: “W/B Western Beige” | |
| Product | Dilution | Aggregate Exposure | Surface Pigment Alteration/Removal |
| Burnished Custom Masonry Cleaner | 1:2 | 4 | 4 |
| Burnished Custom Masonry Cleaner | 1:3 | 4 | 4 |
| Substrate: Split-face CMU | | Pigment Color: “LB/Lakewood Brown” | |
| Product | Dilution | Aggregate Exposure | Surface Pigment Alteration/Removal |
| Custom Masonry Cleaner | 1:2 | 4 | 4 |
| Custom Masonry Cleaner | 1:4 | 4 | 4 |
| Custom Masonry Cleaner | 1:6 | 4 | 4 |
| Burnished Custom Masonry Cleaner | 1:2 | 4 | 4 |
| Burnished Custom Masonry Cleaner | 1:3 | 4 | 4 |
| Substrate: Smooth-face CMU | | Pigment Color: “LB/Lakewood Brown” | |
| Product | Dilution | Aggregate Exposure | Surface Pigment Alteration/Removal |
| Custom Masonry Cleaner | 1:2 | 4 | 4 |
| Custom Masonry Cleaner | 1:4 | 4 | 4 |
| Custom Masonry Cleaner | 1:6 | 4 | 4 |
| Burnished Custom Masonry Cleaner | 1:2 | 4 | 4 |
| Burnished Custom Masonry Cleaner | 1:3 | 4 | 4 |
| Substrate: Ground-face CMU | | Pigment Color: “LB/Lakewood Brown” | |
| Product | Dilution | Aggregate Exposure | Surface Pigment Alteration/Removal |
| Burnished Custom Masonry Cleaner | 1:2 | 4 | 4 |
| Burnished Custom Masonry Cleaner | 1:3 | 4 | 4 |
| Substrate: Split-face CMU | | Pigment Color: “SR/Snake River” | |
| Product | Dilution | Aggregate Exposure | Surface Pigment Alteration/Removal |
| Custom Masonry Cleaner | 1:2 | 4 | 4 |
| Custom Masonry Cleaner | 1:4 | 4 | 4 |
| Custom Masonry Cleaner | 1:6 | 4 | 4 |
| Burnished Custom Masonry Cleaner | 1:2 | 4 | 4 |
| Burnished Custom Masonry Cleaner | 1:3 | 4 | 4 |

Scale used for reporting results of both categories

- 0 – **Worst** match to through-body
- 1 – **Poor** match to through-body
- 2 – **Fair** match to through-body

- 3 – **Good** match to through-body
- 4 – **Best** match to through-body



PALLET TAG PROGRAM LABORATORY REPORT



PROSOCO, Inc.

Page 16

| Substrate: Smooth-face CMU | | Pigment Color: "SR/Snake River" | |
|-----------------------------------|----------|----------------------------------------|------------------------------------|
| Product | Dilution | Aggregate Exposure | Surface Pigment Alteration/Removal |
| Custom Masonry Cleaner | 1:2 | 4 | 4 |
| Custom Masonry Cleaner | 1:4 | 4 | 4 |
| Custom Masonry Cleaner | 1:6 | 4 | 4 |
| Burnished Custom Masonry Cleaner | 1:2 | 4 | 4 |
| Burnished Custom Masonry Cleaner | 1:3 | 4 | 4 |
| Substrate: Ground-face CMU | | Pigment Color: "SR/Snake River" | |
| Product | Dilution | Aggregate Exposure | Surface Pigment Alteration/Removal |
| Burnished Custom Masonry Cleaner | 1:2 | 4 | 4 |
| Burnished Custom Masonry Cleaner | 1:3 | 4 | 4 |

Scale used for reporting results of both categories

0 – **Worst** match to through-body
1 – **Poor** match to through-body
2 – **Fair** match to through-body

3 – **Good** match to through-body
4 – **Best** match to through-body

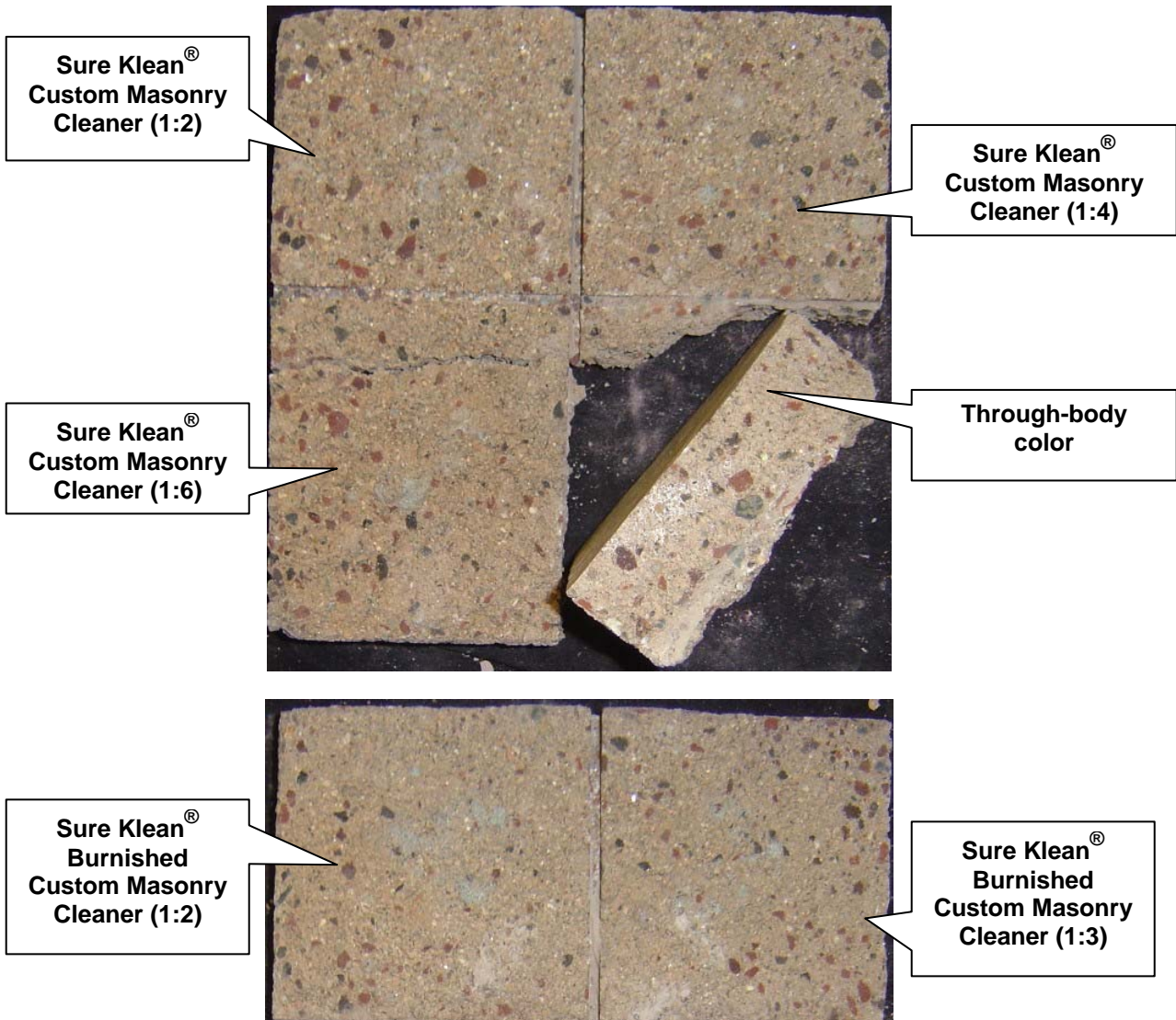


PALLET TAG PROGRAM LABORATORY REPORT



PHOTOGRAPHS – Color Uniformity

“#958 Split-face” CMU; Through-body





PALLET TAG PROGRAM LABORATORY REPORT



PROSOCO, Inc.

Page 18

CONCLUSIONS: COLOR UNIFORMITY:

All dilutions of Sure Klean[®] Custom Masonry Cleaner and Sure Klean[®] Burnished Custom Masonry Cleaner tested affected the substrate in a similar manner. Higher concentrations of cleaner removed moderate to heavy concentrations of pigmented matrix, exposing small and large aggregate. Lower concentrations of cleaner removed slight to moderate concentrations of pigmented matrix, exposing small and large aggregate. All dilutions enhanced the natural appearance of the integrally colored CMU.

RECOMMENDATIONS – COLOR UNIFORMITY

Recommendations for color uniformity for each type of CMU submitted by Best Block Company, Littleton, CO, are provided in the chart below. Recommendations are based on the optimum dilution that provides the best color uniformity.

| Block | Color Uniformity |
|--------------------------------------|----------------------------------------------------------------|
| All Split-face and Smooth-face CMU's | Sure Klean [®] Custom Masonry Cleaner (1:2) |
| All Ground-face CMU's | Sure Klean [®] Burnished Custom Masonry Cleaner (1:3) |

The most appropriate cleaner and dilution should be determined on the specific job-site, and will be dependent primarily on the nature and severity of soiling present at that location. Pressure rinsing equipment providing at least 400 psi at 4-6 gpm delivered through a 15-40 degree fan spray often produces best cleaning results.

Apply all products in accordance with the manufacturer's recommendation provided on container labels and product data sheets. On-site testing should be conducted to determine the most appropriate cleaning product and procedures for a particular project. See product literature for additional application and product information.



PALLET TAG PROGRAM LABORATORY REPORT



PROSOCO, Inc.

Page 19

SECTION C – PROTECTIVE WATER REPELLENTS:

The testing described below evaluates the suitability of water repellent treatments.

The surface treatments evaluated were selected for their suitability for application based on the following selection criteria:

1. Weatherproofing properties
2. Color change
3. Ease of application

DESCRIPTIONS OF PRODUCTS EVALUATED – Protective Water Repellents:

Sure Klean® Weather Seal Blok-Guard® & Graffiti Control – A clear, solvent-based silicone elastomer formulated to weatherproof custom masonry units, cast stone, architectural concrete block, precast concrete, wood and porous masonry. Weather Seal Blok-Guard® & Graffiti Control penetrates and fills pores to prevent water penetration through exterior walls exposed to normal weathering.

Sure Klean® Weather Seal Siloxane WB Concentrate – A concentrated water repellent designed for dilution with fresh water at the jobsite. This solvent-free blend of siloxanes and oligomeric alkoxy-siloxanes mixes easily with water to produce a penetrating water repellent ideal for application to dense or porous masonry surfaces. An effective alternative to conventional solvent-based silanes or siloxanes, Siloxane WB penetrates and chemically bonds deep within the masonry substrate to provide long-lasting protection against water-related staining or deterioration. Will not darken, produce a surface film or impair the natural breathing characteristics of treated surfaces.

SAMPLE PREPARATION – Protective Water Repellents:

The submitted blocks were scored, allowed to dry, and to reabsorb atmospheric humidity for 24 hours prior to treatment. The treatment method consisted of a wet-on-wet brush application. All treatments were allowed to cure at least 3 days prior to testing.

TEST METHODS – Protective Water Repellents:

Water Absorption Tube Test: RILEM II.4, 60 mph, 20 Minutes

The water absorption tube test simulating wind driven rain conditions was performed. This test simulates 60 mile per hour wind driven rain conditions for a period of 20 minutes. See Technical Services TECH Note RILEM Tube Test Procedures.



PALLET TAG PROGRAM LABORATORY REPORT



PROSOCO, Inc.

Page 20

TEST RESULTS – Protective Water Repellents:

Water Absorption Tube Test: RILEM II.4, 60 mph, 20 Minutes

| | RESULTS |
|---------------------------------------------|----------------|
| "#958 Split-face" CMU | |
| Untreated Control | < 40 mph |
| Weather Seal Blok-Guard® & Graffiti Control | 58 mph |
| Siloxane WB 1:9 | 60 mph |
| "#958 Smooth-face" CMU | |
| Untreated Control | < 40 mph |
| Weather Seal Blok-Guard® & Graffiti Control | 59 mph |
| Siloxane WB 1:9 | 60 mph |
| "#958 Ground-face" CMU | |
| Untreated Control | < 40 mph |
| Weather Seal Blok-Guard® & Graffiti Control | 60 mph |
| Siloxane WB 1:9 | 60 mph |
| "WB/Western Beige Split-face" CMU | |
| Untreated Control | < 40 mph |
| Weather Seal Blok-Guard® & Graffiti Control | 57 mph |
| Siloxane WB 1:9 | 56 mph |
| "WB/Western Beige Smooth-face" CMU | |
| Untreated Control | < 40 mph |
| Weather Seal Blok-Guard® & Graffiti Control | 60 mph |
| Siloxane WB 1:9 | 60 mph |
| "WB/Western Beige Ground-face" CMU | |
| Untreated Control | < 40 mph |
| Weather Seal Blok-Guard® & Graffiti Control | 60 mph |
| Siloxane WB 1:9 | 60 mph |
| "LB/Lakewood Brown Split-face" CMU | |
| Untreated Control | < 40 mph |
| Weather Seal Blok-Guard® & Graffiti Control | 59 mph |
| Siloxane WB 1:9 | 59 mph |



PALLET TAG PROGRAM LABORATORY REPORT



PROSOCO, Inc.

Page 21

TEST RESULTS – Protective Water Repellents:

Water Absorption Tube Test: RILEM II.4, 60 mph, 20 Minutes

| | RESULTS |
|---------------------------------------------|----------------|
| “LB/Lakewood Brown Smooth-face” CMU | |
| Untreated Control | < 40 mph |
| Weather Seal Blok-Guard® & Graffiti Control | 58 mph |
| Siloxane WB 1:9 | 60 mph |
| “LB/Lakewood Brown Ground-face” CMU | |
| Untreated Control | < 40 mph |
| Weather Seal Blok-Guard® & Graffiti Control | 58 mph |
| Siloxane WB 1:9 | 59 mph |
| “SR/Snake River Split-face” CMU | |
| Untreated Control | < 40 mph |
| Weather Seal Blok-Guard® & Graffiti Control | 60 mph |
| Siloxane WB 1:9 | 60 mph |
| “SR/Snake River Smooth-face” CMU | |
| Untreated Control | < 40 mph |
| Weather Seal Blok-Guard® & Graffiti Control | 60 mph |
| Siloxane WB 1:9 | 59 mph |
| “SR/Snake River Ground-face” CMU | |
| Untreated Control | < 40 mph |
| Weather Seal Blok-Guard® & Graffiti Control | 60 mph |
| Siloxane WB 1:9 | 60 mph |



PALLET TAG PROGRAM LABORATORY REPORT

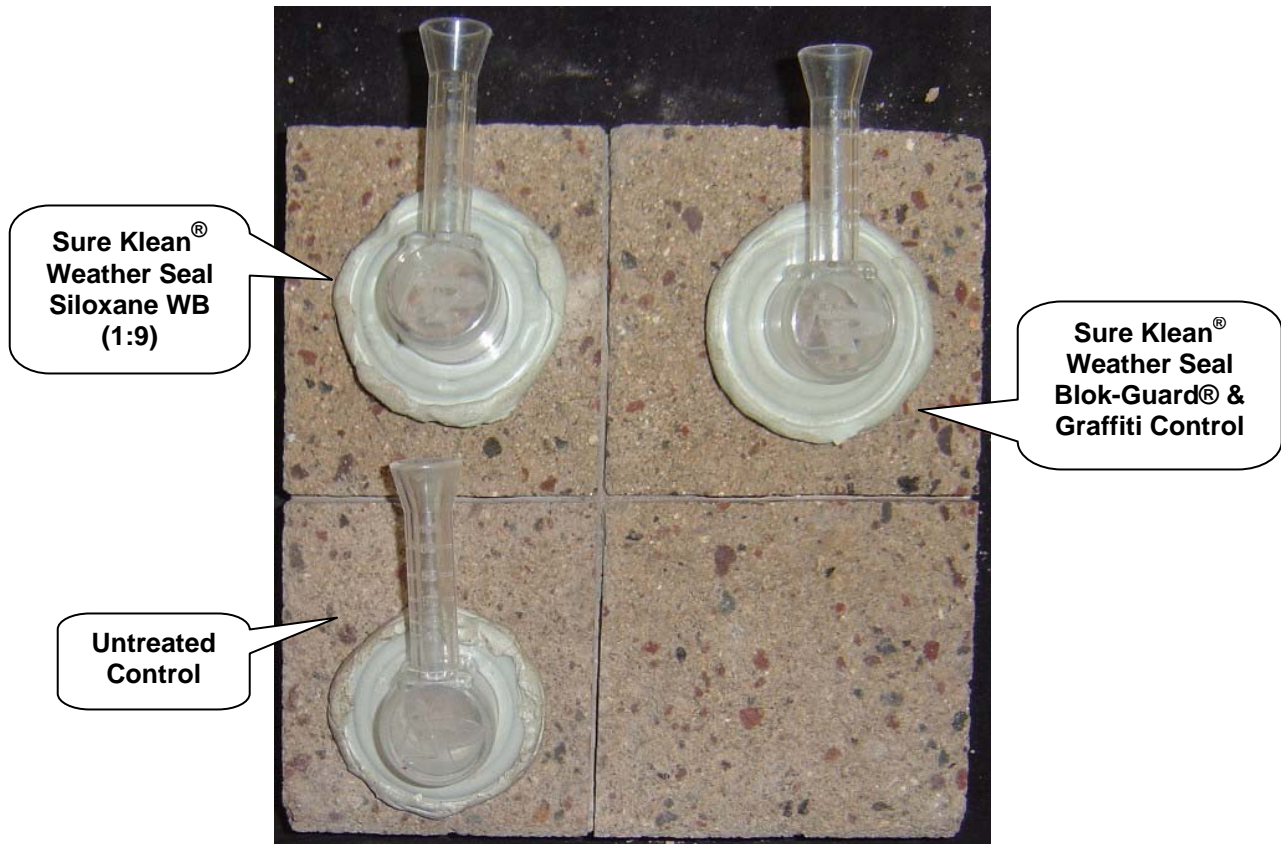


PROSOCO, Inc.

Page 22

PHOTOGRAPHS- Protective Water Repellents

"#958 Split-face" CMU - RILEM Testing





PALLET TAG PROGRAM LABORATORY REPORT



CONCLUSIONS - Protective Water Repellents

Based upon laboratory evaluations, both Sure Klean[®] Weather Seal Blok-Guard[®] & Graffiti Control and Sure Klean[®] Weather Seal Siloxane WB Concentrate diluted with nine parts water provided excellent water repellency to all submitted samples. In addition, Sure Klean[®] Weather Seal Blok-Guard[®] & Graffiti Control enhanced the appearance of each CMU.

RECOMMENDATIONS - PROTECTIVE WATER REPELLENTS

Recommendations for water repellency treatment for each type of CMU submitted by Best Block Company, Littleton, CO, are provided in the chart below. Recommendations are based on the treatment that proved most effective and can provide water repellency on all types submitted.

| Block Type | Water Repellents |
|---------------------|-----------------------------------------------------------------------------------------------------------------------------------------------------------|
| All Submitted CMU's | Sure Klean [®] Weather Seal Blok-Guard [®] & Graffiti Control OR Sure Klean [®] Weather Seal Siloxane WB Concentrate 1:9 |

Apply all products in accordance with the manufacturer's recommendation provided on container labels and product data sheets. On-site testing should be conducted to determine the most appropriate water repellent product and procedures for a particular project. See product literature for additional application and product information.



PALLET TAG PROGRAM LABORATORY REPORT



PROSOCO, Inc.

Page 24

SECTION D – GRAFFITI CONTROL

DESCRIPTION OF PRODUCTS EVALUATED

These trials were conducted to determine the optimal graffiti control treatment.

Graffiti Control Treatments

Sure Klean® Weather Seal Blok-Guard® & Graffiti Control – A clear, solvent-based silicone elastomer formulated to weatherproof concrete block and other porous masonry material. Sure Klean® Weather Seal Blok-Guard® & Graffiti Control protects masonry surfaces from repeated graffiti attacks without altering the natural appearance.

Products Evaluated for Graffiti Removal

Defacer Eraser® Graffiti Wipe – An easy-to-use graffiti remover that does not contain methanol, methylene chloride or other “halogenated” solvents prohibited on many projects. Graffiti Wipe removes a variety of graffiti stains from most smooth masonry, wood and metal surfaces.

Sure Klean® Fast Acting Stripper – A thixotropic stripping compound formulated specifically for removal of high strength paints and coatings such as epoxies, polyurethanes, and floor enamels. Additionally, Fast Acting Stripper dissolves most spray paints, marking pens, lacquers and other graffiti.

Graffiti Agents

Interior/Exterior Spray Paint (Red)
Permanent Marker (Green)
Permanent Marker (Red)
Permanent Marker (Black)



PALLET TAG PROGRAM LABORATORY REPORT



SAMPLE PREPARATION – Graffiti Control

This evaluation compares the effectiveness in preventing staining of enamel spray paint and permanent markers.

Sections of the concrete samples were treated with one coat of Sure Klean® Weather Seal Blok-Guard® & Graffiti Control, in accordance with PROSOCO, Inc.'s Product Guide application instructions and then allowed to cure for at least one day. At the end of the one-day cure period, a visual adverse effects evaluation was made and then the graffiti agents were applied to the substrates.

Spray paint and markers were applied as graffiti agents to all treated surfaces no sooner than one day following application of Sure Klean® Weather Seal Blok-Guard® & Graffiti Control. Removal of the graffiti agents was attempted 24 hours after application of the graffiti agents, using Defacer Eraser® Graffiti Wipe and Sure Klean® Fast Acting Stripper.

TEST METHOD – Graffiti Control

Chemical cleaners were evaluated using the following procedure:

1. Apply the product to a dry surface, soiled with graffiti.
2. Allow appropriate dwell time:

| | |
|----------------------------|------------|
| Graffiti Wipe..... | 5 minutes |
| Fast Acting Stripper | 20 minutes |
3. Pressure rinse thoroughly until water runs clear. *
4. Allow the surface to dry thoroughly and visually examine to determine effectiveness.

* Pressure rinsing was conducted at approximately 1300 psi with a warm water flow rate of 1.9 gallons per minute.



PALLET TAG PROGRAM LABORATORY REPORT



TEST RESULTS – Graffiti Control

| “#958 Split-face” CMU | | | | | |
|-------------------------------------------|------------------|---------------------|---------------------|-------------------|-----------------------|
| Untreated Control | Red Paint | Black Marker | Green Marker | Red Marker | % Avg. Removal |
| Fast Acting Stripper | 85% | 85% | 30% | 30% | 58% |
| Graffiti Wipe | 85% | 75% | 30% | 60% | 63% |
| Blok-Guard® & Graffiti Control | Red Paint | Black Marker | Green Marker | Red Marker | % Avg. Removal |
| Fast Acting Stripper | 90% | 100% | 95% | 95% | 95% |
| Graffiti Wipe | 95% | 100% | 90% | 90% | 94% |
| “#958 Smooth-face” CMU | | | | | |
| Untreated Control | Red Paint | Black Marker | Green Marker | Red Marker | % Avg. Removal |
| Fast Acting Stripper | 85% | 95% | 80% | 70% | 83% |
| Graffiti Wipe | 90% | 95% | 80% | 80% | 86% |
| Blok-Guard® & Graffiti Control | Red Paint | Black Marker | Green Marker | Red Marker | % Avg. Removal |
| Fast Acting Stripper | 90% | 95% | 95% | 90% | 93% |
| Graffiti Wipe | 95% | 95% | 95% | 90% | 94% |
| “#958 Ground-face” CMU | | | | | |
| Untreated Control | Red Paint | Black Marker | Green Marker | Red Marker | % Avg. Removal |
| Fast Acting Stripper | 90% | 90% | 70% | 60% | 78% |
| Graffiti Wipe | 90% | 90% | 70% | 80% | 83% |
| Blok-Guard® & Graffiti Control | Red Paint | Black Marker | Green Marker | Red Marker | % Avg. Removal |
| Fast Acting Stripper | 90% | 100% | 95% | 100% | 96% |
| Graffiti Wipe | 100% | 100% | 95% | 100% | 99% |
| “WB/Western Beige Split-face” CMU | | | | | |
| Untreated Control | Red Paint | Black Marker | Green Marker | Red Marker | % Avg. Removal |
| Fast Acting Stripper | 90% | 70% | 30% | 30% | 55% |
| Graffiti Wipe | 95% | 70% | 30% | 30% | 56% |
| Blok-Guard® & Graffiti Control | Red Paint | Black Marker | Green Marker | Red Marker | % Avg. Removal |
| Fast Acting Stripper | 95% | 95% | 90% | 90% | 93% |
| Graffiti Wipe | 95% | 90% | 90% | 90% | 91% |



PALLET TAG PROGRAM LABORATORY REPORT



TEST RESULTS – Graffiti Control

| “WB/Western Beige Smooth-face” CMU | | | | | |
|--------------------------------------------|------------------|---------------------|---------------------|-------------------|-----------------------|
| Untreated Control | Red Paint | Black Marker | Green Marker | Red Marker | % Avg. Removal |
| Fast Acting Stripper | 80% | 85% | 85% | 80% | 83% |
| Graffiti Wipe | 85% | 85% | 85% | 80% | 84% |
| Blok-Guard® & Graffiti Control | Red Paint | Black Marker | Green Marker | Red Marker | % Avg. Removal |
| Fast Acting Stripper | 85% | 95% | 95% | 95% | 93% |
| Graffiti Wipe | 95% | 95% | 95% | 95% | 95% |
| “WB/Western Beige Ground-face” CMU | | | | | |
| Untreated Control | Red Paint | Black Marker | Green Marker | Red Marker | % Avg. Removal |
| Fast Acting Stripper | 85% | 85% | 80% | 80% | 83% |
| Graffiti Wipe | 90% | 85% | 80% | 80% | 84% |
| Blok-Guard® & Graffiti Control | Red Paint | Black Marker | Green Marker | Red Marker | % Avg. Removal |
| Fast Acting Stripper | 90% | 98% | 95% | 98% | 95% |
| Graffiti Wipe | 95% | 98% | 95% | 98% | 97% |
| “LB/Lakewood Brown Split-face” CMU | | | | | |
| Untreated Control | Red Paint | Black Marker | Green Marker | Red Marker | % Avg. Removal |
| Fast Acting Stripper | 90% | 95% | 60% | 70% | 79% |
| Graffiti Wipe | 90% | 90% | 60% | 70% | 78% |
| Blok-Guard® & Graffiti Control | Red Paint | Black Marker | Green Marker | Red Marker | % Avg. Removal |
| Fast Acting Stripper | 95% | 100% | 95% | 98% | 97% |
| Graffiti Wipe | 95% | 100% | 95% | 98% | 97% |
| “LB/Lakewood Brown Smooth-face” CMU | | | | | |
| Untreated Control | Red Paint | Black Marker | Green Marker | Red Marker | % Avg. Removal |
| Fast Acting Stripper | 90% | 95% | 95% | 95% | 94% |
| Graffiti Wipe | 90% | 95% | 95% | 95% | 94% |
| Blok-Guard® & Graffiti Control | Red Paint | Black Marker | Green Marker | Red Marker | % Avg. Removal |
| Fast Acting Stripper | 95% | 100% | 99% | 100% | 99% |
| Graffiti Wipe | 100% | 100% | 99% | 100% | 100% |



PALLET TAG PROGRAM LABORATORY REPORT

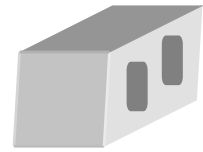


TEST RESULTS – Graffiti Control

| “LB/Lakewood Brown Ground-face” CMU | | | | | |
|--------------------------------------------|------------------|---------------------|---------------------|-------------------|-----------------------|
| Untreated Control | Red Paint | Black Marker | Green Marker | Red Marker | % Avg. Removal |
| Fast Acting Stripper | 95% | 100% | 100% | 95% | 98% |
| Graffiti Wipe | 100% | 100% | 100% | 98% | 100% |
| Blok-Guard® & Graffiti Control | Red Paint | Black Marker | Green Marker | Red Marker | % Avg. Removal |
| Fast Acting Stripper | 95% | 100% | 100% | 100% | 99% |
| Graffiti Wipe | 100% | 100% | 100% | 100% | 100% |
| “SR/Snake River Split-face” CMU | | | | | |
| Untreated Control | Red Paint | Black Marker | Green Marker | Red Marker | % Avg. Removal |
| Fast Acting Stripper | 85% | 90% | 30% | 40% | 61% |
| Graffiti Wipe | 85% | 80% | 30% | 45% | 60% |
| Blok-Guard® & Graffiti Control | Red Paint | Black Marker | Green Marker | Red Marker | % Avg. Removal |
| Fast Acting Stripper | 90% | 100% | 95% | 95% | 95% |
| Graffiti Wipe | 90% | 100% | 95% | 95% | 95% |
| “SR/Snake River Smooth-face” CMU | | | | | |
| Untreated Control | Red Paint | Black Marker | Green Marker | Red Marker | % Avg. Removal |
| Fast Acting Stripper | 90% | 95% | 75% | 75% | 84% |
| Graffiti Wipe | 90% | 90% | 75% | 75% | 83% |
| Blok-Guard® & Graffiti Control | Red Paint | Black Marker | Green Marker | Red Marker | % Avg. Removal |
| Fast Acting Stripper | 90% | 99% | 95% | 95% | 95% |
| Graffiti Wipe | 95% | 99% | 95% | 95% | 96% |
| “SR/Snake River Ground-face” CMU | | | | | |
| Untreated Control | Red Paint | Black Marker | Green Marker | Red Marker | % Avg. Removal |
| Fast Acting Stripper | 90% | 95% | 90% | 90% | 91% |
| Graffiti Wipe | 95% | 90% | 90% | 95% | 93% |
| Blok-Guard® & Graffiti Control | Red Paint | Black Marker | Green Marker | Red Marker | % Avg. Removal |
| Fast Acting Stripper | 95% | 100% | 100% | 100% | 99% |
| Graffiti Wipe | 100% | 100% | 100% | 100% | 100% |



PALLET TAG PROGRAM LABORATORY REPORT



PHOTOGRAPHS – Graffiti Control

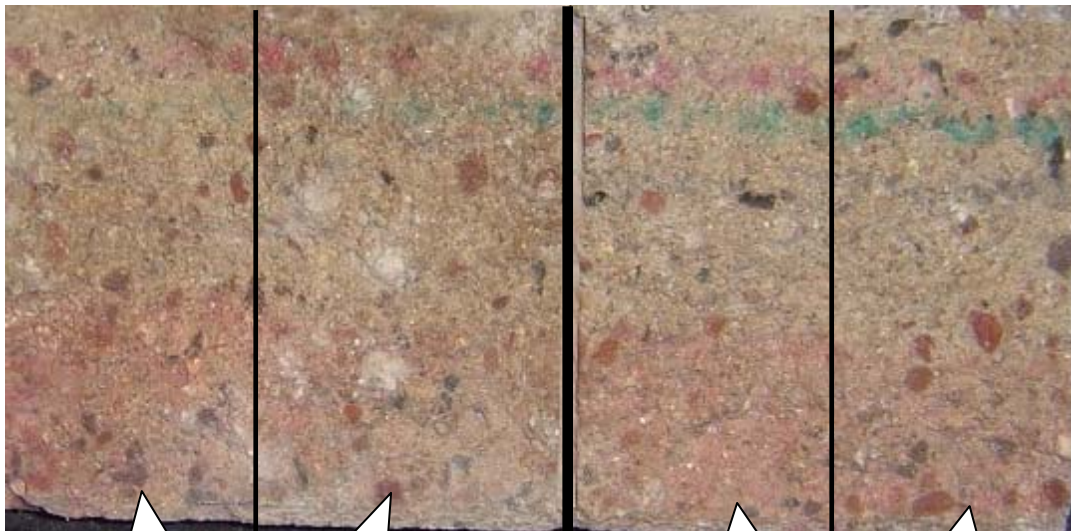
“#958 Split-face” CMU Before Graffiti Removal



Sure Klean® Weather Seal Blok-Guard® & Graffiti Control

Untreated Control

“#958 Split-face” CMU After Graffiti Removal



Sure Klean® Fast Acting Stripper

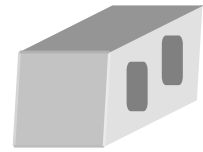
Defacer Eraser® Graffiti Wipe

Sure Klean® Fast Acting Stripper

Defacer Eraser® Graffiti Wipe



PALLET TAG PROGRAM LABORATORY REPORT



CONCLUSIONS – Graffiti Control

Based upon laboratory evaluations, graffiti removal was improved when the submitted samples were treated with Sure Klean® Weather Seal Blok-Guard® & Graffiti Control prior to graffiti application. In addition, Sure Klean® Weather Seal Blok-Guard® & Graffiti Control enhanced the appearance of the CMU's.

RECOMMENDATIONS – GRAFFITI CONTROL

Recommendations for graffiti control treatment for each type of CMU submitted by Best Block Company, Littleton, CO, are provided in the chart below. Recommendations are based on the treatment that proved most effective for providing graffiti repellency and the product that was most effective at removing the graffiti on all types submitted.

| Block Type | Graffiti Repellents | Graffiti Removers |
|---------------------|---------------------------------------------------------|-------------------------------------------------------------------------|
| All Submitted CMU's | Sure Klean® Weather Seal Blok-Guard® & Graffiti Control | Sure Klean® Fast Acting Stripper OR Defacer Eraser® Graffiti Wipe |

Apply all products in accordance with the manufacturer's recommendation provided on container labels and product data sheets. Because the severity of graffiti varies from location to location, on-site testing should be conducted to determine the most appropriate graffiti control product and procedure for a particular project.

For the most severe graffiti cases Sure Klean® Fast Acting Stripper is recommended for job-site testing. For mild graffiti cases, Defacer Eraser® Graffiti Wipe is recommended for job-site testing. See product literature for additional application and product information.



PALLET TAG PROGRAM LABORATORY REPORT



PROSOCO, Inc.

Page 31

SECTION E - COLOR ENHANCEMENT AND SHEEN

DESCRIPTION OF PRODUCTS EVALUATED - Color Enhancement and Sheen:

Sure Klean® Burnished Block Sealer- A water-based acrylic emulsion for protecting and enhancing the finish of burnished concrete block. Applied with brush, roller, or low-pressure sprayer, this milky-white liquid dries quickly to a tightly adhered glossy finish. Burnished Block Sealer provides resistance to scrapes and scuffs of transport and facilitates the removal of mortar smears and other construction soiling. Following construction cleaning, a treatment of Burnished Block Sealer enhances the appearance of burnished block and makes maintenance cleaning easier.

TEST METHOD - COLOR ENHANCEMENT AND SHEEN

Sure Klean® Burnished Block Sealer was applied in a thin, even brush application, and the samples were allowed to cure for 24 hours. A visual evaluation was then conducted comparing the treated area to an untreated area.



PALLET TAG PROGRAM LABORATORY REPORT



PROSOCO, Inc.

Page 32

TEST RESULTS- COLOR ENHANCEMENT AND SHEEN

| Ground-face CMU | Color Enhancement | Sheen |
|---------------------|-------------------|-------|
| "#958" | 1 | 2 |
| "WB/Western Beige" | 1 | 2 |
| "LB/Lakewood Brown" | 1 | 2 |
| "SR/Snake River" | 1 | 2 |

Scale: 0- No enhancement; dull
1- Slight Enhancement
2- Moderate Enhancement
3- Significant Enhancement

Scale: 0- No sheen; dull
1- Slight Sheen
2- Moderate Sheen
3- Significant Sheen

PHOTOGRAPHS- Color Enhancement and Sheen

"#958 Ground-face" CMU

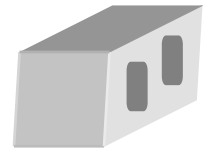


Sure Klean® Burnished
Block Sealer

Untreated Control



PALLET TAG PROGRAM LABORATORY REPORT



RECOMMENDATIONS - Color Enhancement

Recommendations for color enhancement for each type of ground-face CMU submitted are provided in the chart below. Recommendations are based on the treatment that proved most effective in providing color enhancement and sheen to the ground-face CMU's.

| Block Type | Color Enhancement and Sheen |
|-----------------------|------------------------------------|
| All Ground-face CMU's | Sure Klean® Burnished Block Sealer |

Apply all products in accordance with the manufacturer's recommendation provided on container labels and product data sheets. On-site testing should be conducted to determine the most appropriate product and procedures for a particular project. See product literature for additional application and product information.



PALLET TAG PROGRAM LABORATORY REPORT



SECTION F – ADVERSE EFFECTS

Sure Klean® Burnished Custom Masonry Cleaner was evaluated to determine if it creates any adverse effects when used on the surface of the ground-face CMU's after treatment with Sure Klean® Burnished Block Sealer.

DESCRIPTION OF PRODUCTS EVALUATED – Adverse Effects:

Sure Klean® Burnished Custom Masonry Cleaner – A general purpose, non-etching acidic cleaner for most custom masonry and colored concrete. Removes rust, mud, oil, atmospheric dirt, mortar smears and other stains without altering the surface texture, while also adding depth to colors and brightening white matrices and exposed aggregate. Liquid concentrate for dilution with 2-3 parts water. Apply by brush or low-pressure spray.

TEST METHOD – Cleaning

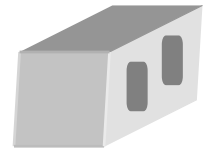
Dilution ratios refer to mixtures of parts concentrated cleaner : parts fresh water. Chemical cleaners were evaluated using the following procedure:

1. Prewet the surface with water.
2. Apply the cleaner at the appropriate dilutions.
3. Allow appropriate dwell time for each cleaner:
 Burnished Custom Masonry Cleaner 3 minutes
4. Reapply the product and moderately agitate with a brush.
5. Pressure rinse thoroughly.*
6. Allow the surface to dry for at least 18 hours and visually examine.

*Pressure rinsing was conducted at approximately 1300 psi with a warm water flow rate of 1.9 gallons per minute.



PALLET TAG PROGRAM LABORATORY REPORT



PROSOCO, Inc.

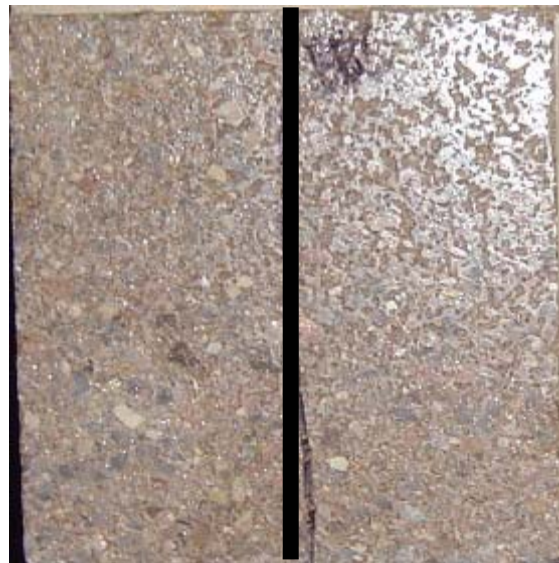
Page 35

TEST RESULTS- ADVERSE EFFECTS

| "#958" | | |
|----------------------------------|----------|--------------------|
| Product | Dilution | Adverse Effects? |
| Burnished Custom Masonry Cleaner | 1:3 | No adverse effects |
| "WB/Western Beige" | | |
| Product | Dilution | Adverse Effects? |
| Burnished Custom Masonry Cleaner | 1:3 | No adverse effects |
| "LB/Lakewood Brown" | | |
| Product | Dilution | Adverse Effects? |
| Burnished Custom Masonry Cleaner | 1:3 | No adverse effects |
| "SR/Snake River" | | |
| Product | Dilution | Adverse Effects? |
| Burnished Custom Masonry Cleaner | 1:3 | No adverse effects |

PHOTOGRAPHS- Adverse Effects

"#958" Ground-face CMU with Sure Klean[®] Burnished Block Sealer

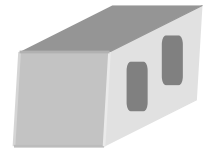


Burnished Block Sealer followed by Burnished Custom Masonry Cleaner (1:3)

Burnished Block Sealer (un-cleaned)



PALLET TAG PROGRAM LABORATORY REPORT



PROSOCO, Inc.

Page 36

CONCLUSIONS - Adverse Effects

Based on the test data, Sure Klean[®] Burnished Custom Masonry Cleaner diluted with three parts water did not cause any adverse effects on the submitted ground-face CMU's treated with Sure Klean[®] Burnished Block Sealer.

RECOMMENDED PRODUCTS AND DILUTIONS

Recommendations for each type of ground-face CMU are provided in the chart below.

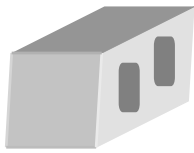
| Sample | New Construction Cleaning |
|---------------------------------------------------------------------------------------------|----------------------------------------------------------------|
| All Submitted Ground-face CMU's Treated with Sure Klean [®] Burnished Block Sealer | Sure Klean [®] Burnished Custom Masonry Cleaner (1:3) |

The most appropriate cleaner and dilution should be determined on the specific job-site, and will be dependent primarily on the nature and severity of soiling present at that location. Pressure rinsing equipment providing at least 400 psi at 4-6 gpm delivered through a 15-40 degree fan spray often produces best cleaning results.

Apply all products in accordance with the manufacturer's recommendation provided on container labels and product data sheets. On-site testing should be conducted to determine the most appropriate cleaning product and procedures for a particular project. See product literature for additional application and product information.

Christopher A. Moore
Project Testing Laboratory Technician

CAM



Laboratory Report

Pallet Tag Program Evaluation

**Best Block Company
Littleton, CO**

Project No. 0408-11 PTP

Prepared For:

**Best Block Company
8227 Blakeland Drive
Littleton, CO 80125**

Prepared By:



***PROSOCO, Inc.
August 2004***