



# PALLET TAG PROGRAM LABORATORY REPORT



**TABLE OF CONTENTS**

SAMPLES SUBMITTED ..... 2

PURPOSE OF TEST ..... 3

PRODUCTS EVALUATED ..... 4

**SECTION A – NEW CONSTRUCTION CLEANING**

DESCRIPTION OF PRODUCTS EVALUATED..... 5

TEST METHOD ..... 5

TEST RESULTS ..... 6-7

PHOTOGRAPHS ..... 8

CONCLUSIONS..... 9

RECOMMENDATIONS..... 9

**SECTION B – LIMITING SURFACE ALTERATIONS**

DESCRIPTION OF PRODUCTS EVALUATED..... 10

TEST METHOD ..... 10

TEST RESULTS ..... 11-12

PHOTOGRAPHS ..... 13

CONCLUSIONS..... 14

RECOMMENDATIONS..... 14

**SECTION C – WATER REPELLENCY**

DESCRIPTION OF PRODUCTS EVALUATED..... 15

TEST METHODS ..... 15

TEST RESULTS ..... 16-17

PHOTOGRAPHS ..... 18

CONCLUSIONS..... 19

RECOMMENDATIONS..... 19

**SECTION D – STAIN REPELLENCY**

DESCRIPTION OF PRODUCTS EVALUATED..... 20

TEST METHODS ..... 21

TEST RESULTS ..... 22-25

PHOTOGRAPHS ..... 26

CONCLUSIONS..... 27

RECOMMENDATIONS..... 27

**ATTACHMENTS**

- Technical Services TECH Note RILEM Tube Test Procedures
- Product Data literature for all products evaluated



# PALLET TAG PROGRAM LABORATORY REPORT



**PROSOCO, Inc.**

Page 2

**FOR:** Ted Sullivan, Anchor Block  
**cc:** Joe Talecki  
John Bourne

**SUBJECT:** Anchor Block  
Brick, NJ

**DATE:** June 23, 2004

**PROJECT:** 0403-15 PTP

**SAMPLES SUBMITTED:** (9) types pf concrete pavers

| Concrete pavers      | Color      | Number | Size                             |
|----------------------|------------|--------|----------------------------------|
| "Brownstone Tumbled" | Brown      | 4      | 9½ x 6½ x 2¼ AND<br>6½ x 6½ x 2¼ |
| "Buff"               | Tan        | 3      | 6½ x 6½ x 2¼                     |
| "Charcoal"           | Gray       | 5      |                                  |
| "Flash Brown"        | Brown      | 5      |                                  |
| "Liberty Blend"      | Red        | 5      |                                  |
| "Light Gray"         | Light Gray | 5      |                                  |
| "Moss"               | Green      | 3      |                                  |
| "Sable"              | Gray       | 5      |                                  |
| "Sable Tumbled"      | Gray       | 5      |                                  |

Submitted by: Joe Talecki



# PALLET TAG PROGRAM LABORATORY REPORT



PROSOCO, Inc.

Page 3

---

## PURPOSE OF TESTING:

Nine types of concrete pavers were submitted to PROSOCO, Inc.'s Testing Laboratory with a request to determine if application of the products evaluated would produce any surface alteration during new construction cleaning operations. Additionally, the effectiveness of water repellents, graffiti repellents, and stain repellents suitable for concrete pavers were evaluated.

**A. New Construction Cleaning** – Sure Klean<sup>®</sup> Custom Masonry Cleaner was evaluated at various dilutions for removal of laboratory applied mortar.

To simulate new construction soiling, samples are placed on a bench with finished surface facing upward. Hollow cylinders measuring 50 mm in diameter and 75 mm tall are positioned on top of each sample and filled with a wet mixture of Ash Grove<sup>®</sup> Type S cementitious mortar. The wet, mortar-filled cylinder is allowed to remain in contact with the sample for 10 minutes before removal.

Heavy deposits of mortar are removed with dry scraping after 24 hours. Prepared cleaning solutions are then evaluated for their effectiveness in removing residual Ash Grove<sup>®</sup> Type S mortar staining after 3 days, 7 days, and 14 days of curing.

**B. Color Uniformity Testing\*** - Sure Klean<sup>®</sup> Custom Masonry Cleaner was evaluated at various dilutions to determine the optimal concentration of cleaner that leaves the external surface looking most like the natural through-body color of the sample. Color uniformity was evaluated by comparing aggregate exposure and surface pigment alternation/removal of each cleaned surface compared to the natural through-body color of the cast stone.

Aggregate Exposure is the visual examination comparing aggregate exposure of the interior, through-body section of the cast stone to surfaces cleaned with selected product(s) at given dilutions.

Surface Pigment Alteration/Removal\* is the visual examination comparing the pigmentation of the interior, through-body section of the cast stone to surfaces cleaned with selected product(s) at given dilutions.

The following is the scale used for reporting results of both categories:

|  |                                       |
|--|---------------------------------------|
| 0 – <b>Worst</b> match to through-body | 3 – <b>Good</b> match to through-body |
| 1 – <b>Poor</b> match to through-body  | 4 – <b>Best</b> match to through-body |
| 2 – <b>Fair</b> match to through-body  |                                       |

**C. Water Repellency** – Consolideck<sup>®</sup> Saltguard WB and Sure Klean<sup>®</sup> Weather Seal Siloxane WB Concentrate were evaluated for their ability to provide water repellency to the submitted samples.

**D. Stain Repellency** – Stand Off<sup>®</sup> SLX100 Water & Oil Repellent was evaluated for its ability to control staining on the submitted samples.



# PALLET TAG PROGRAM LABORATORY REPORT



PROSOCO, Inc.

Page 4

## PRODUCTS EVALUATED

### CLEANING AND LIMITING SURFACE ALTERATIONS PRODUCTS EVALUATED

| SAMPLE                        | PRODUCT                            | DILUTION*     |
|-------------------------------|------------------------------------|---------------|
| All Submitted Concrete Pavers | Sure Klean® Custom Masonry Cleaner | 1:2, 1:4, 1:6 |

### WATER REPELLENCY PRODUCTS EVALUATED

| SAMPLE   | Product  | Dilution    |
|--|--|-------------|
| All Submitted Concrete Pavers except "Buff" and "Moss" | Consolideck® Saltguard® WB                       | Concentrate |
|  | Sure Klean® Weather Seal Siloxane WB Concentrate | 1:9, 1:14   |

### STAIN REPELLENCY PRODUCTS EVALUATED

| SAMPLE   | Product                                 | Dilution    |
|--|---|-------------|
| All Submitted Concrete Pavers except "Buff" and "Moss" | Stand Off® SLX100 Water & Oil Repellent | Concentrate |

\*Dilution ratios refer to mixtures of concentrated product: fresh water.



# PALLET TAG PROGRAM LABORATORY REPORT



## **SECTION A – NEW CONSTRUCTION CLEANING**

### **DESCRIPTION OF PRODUCTS EVALUATED – New Construction Cleaning**

These cleaning trials were conducted to determine the optimal cleaning/cure time combination to most efficiently remove Ash Grove® Type S mortar from the submitted concrete pavers.

Ash Grove® Type S cementitious mortar was prepared in compliance with the manufacturers instructions, applied to the concrete pavers and allowed to cure for 3, 7 and 14 days prior to removal with high pressure water rinse using pressure rinsing equipment and chemical assist. The removal of gray Ash Grove® Type S cementitious masonry cement mortar after 3, 7 and 14 days of curing was visually evaluated.

**Sure Klean® Custom Masonry Cleaner** – A general purpose, concentrated acidic cleaner for most custom masonry and colored concrete. Removes concrete splashes, excess mortar, mud, heavy efflorescence and surface soiling, leaving the masonry clean and uniform with no acid burning or streaking. Liquid concentrate for dilution with 2-6 parts water. Apply by brush or low-pressure spray.

### **TEST METHOD – New Construction Cleaning**

Dilution ratios refer to mixtures of concentrated cleaner : fresh water. Chemical cleaners were evaluated using the following procedure:

1. Prewet the surface with water.
2. Apply the cleaner.
3. Allow the appropriate dwell time, as specified.  
     Custom Masonry Cleaner ..... 3 minutes
4. Rinse thoroughly.\*

\* Pressure rinsing was conducted at approximately 1300 psi with a warm water flow rate of 1.9 gallons per minute.



# PALLET TAG PROGRAM LABORATORY REPORT



**PROSOCO, Inc.**

Page 6

**TEST RESULTS – New Construction Cleaning**

**% Removal**

**“Brownstone Tumbled”**

|                              | <u><b>3 day</b></u> | <u><b>7 day</b></u> | <u><b>14 day</b></u> |
|------------------------------|---------------------|---------------------|----------------------|
| Custom Masonry Cleaner (1:2) | 95%                 | 95%                 | 100%                 |
| Custom Masonry Cleaner (1:4) | 95%                 | 100%                | 100%                 |
| Custom Masonry Cleaner (1:6) | 95%                 | 100%                | 90%                  |

**“Buff”**

|                              | <u><b>3 day</b></u> | <u><b>7 day</b></u> | <u><b>14 day</b></u> |
|------------------------------|---------------------|---------------------|----------------------|
| Custom Masonry Cleaner (1:2) | 100%                | 100%                | 100%                 |
| Custom Masonry Cleaner (1:4) | 100%                | 100%                | 100%                 |
| Custom Masonry Cleaner (1:6) | 100%                | 100%                | 100%                 |

**“Charcoal”**

|                              | <u><b>3 day</b></u> | <u><b>7 day</b></u> | <u><b>14 day</b></u> |
|------------------------------|---------------------|---------------------|----------------------|
| Custom Masonry Cleaner (1:2) | 90%                 | 95%                 | 90%                  |
| Custom Masonry Cleaner (1:4) | 90%                 | 95%                 | 90%                  |
| Custom Masonry Cleaner (1:6) | 95%                 | 95%                 | 80%                  |

**“Flashed Brown”**

|                              | <u><b>3 day</b></u> | <u><b>7 day</b></u> | <u><b>14 day</b></u> |
|------------------------------|---------------------|---------------------|----------------------|
| Custom Masonry Cleaner (1:2) | 100%                | 100%                | 95%                  |
| Custom Masonry Cleaner (1:4) | 100%                | 100%                | 90%                  |
| Custom Masonry Cleaner (1:6) | 100%                | 95%                 | 85%                  |

**“Liberty Blend”**

|                              | <u><b>3 day</b></u> | <u><b>7 day</b></u> | <u><b>14 day</b></u> |
|------------------------------|---------------------|---------------------|----------------------|
| Custom Masonry Cleaner (1:2) | 100%                | 98%                 | 90%                  |
| Custom Masonry Cleaner (1:4) | 100%                | 98%                 | 95%                  |
| Custom Masonry Cleaner (1:6) | 100%                | 100%                | 100%                 |



# PALLET TAG PROGRAM LABORATORY REPORT



PROSOCO, Inc.

Page 7

---

## TEST RESULTS – New Construction Cleaning

### % Removal

#### “Light Gray”

|                              | <u>3 day</u> | <u>7 day</u> | <u>14 day</u> |
|------------------------------|--------------|--------------|---------------|
| Custom Masonry Cleaner (1:2) | 95%          | 95%          | 95%           |
| Custom Masonry Cleaner (1:4) | 95%          | 95%          | 95%           |
| Custom Masonry Cleaner (1:6) | 100%         | 100%         | 100%          |

#### “Moss”

|                              | <u>3 day</u> | <u>7 day</u> | <u>14 day</u> |
|------------------------------|--------------|--------------|---------------|
| Custom Masonry Cleaner (1:2) | 100%         | 100%         | 100%          |
| Custom Masonry Cleaner (1:4) | 100%         | 100%         | 100%          |
| Custom Masonry Cleaner (1:6) | 100%         | 100%         | 100%          |

#### “Sable”

|                              | <u>3 day</u> | <u>7 day</u> | <u>14 day</u> |
|------------------------------|--------------|--------------|---------------|
| Custom Masonry Cleaner (1:2) | 98%          | 100%         | 95%           |
| Custom Masonry Cleaner (1:4) | 98%          | 100%         | 98%           |
| Custom Masonry Cleaner (1:6) | 98%          | 100%         | 90%           |

#### “Sable Tumbled”

|                              | <u>3 day</u> | <u>7 day</u> | <u>14 day</u> |
|------------------------------|--------------|--------------|---------------|
| Custom Masonry Cleaner (1:2) | 100%         | 100%         | 100%          |
| Custom Masonry Cleaner (1:4) | 100%         | 100%         | 100%          |
| Custom Masonry Cleaner (1:6) | 100%         | 100%         | 95%           |



# PALLET TAG PROGRAM LABORATORY REPORT



PROSOCO, Inc.

Page 8

## PHOTOGRAPHS- New Construction Cleaning

"Buff"; 3 day Cleaning

Sure Klean® Custom  
Masonry Cleaner (1:2)

Sure Klean®  
Custom Masonry  
Cleaner (1:4)

Sure Klean® Custom  
Masonry Cleaner (1:4)

Untreated Control



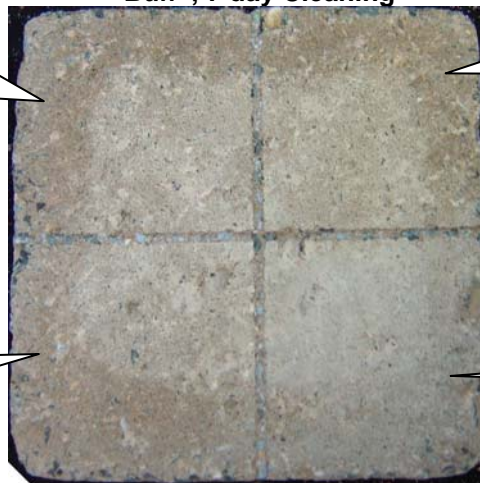
"Buff"; 7 day Cleaning

Sure Klean® Custom  
Masonry Cleaner (1:2)

Sure Klean®  
Custom Masonry  
Cleaner (1:4)

Sure Klean® Custom  
Masonry Cleaner (1:6)

Untreated Control

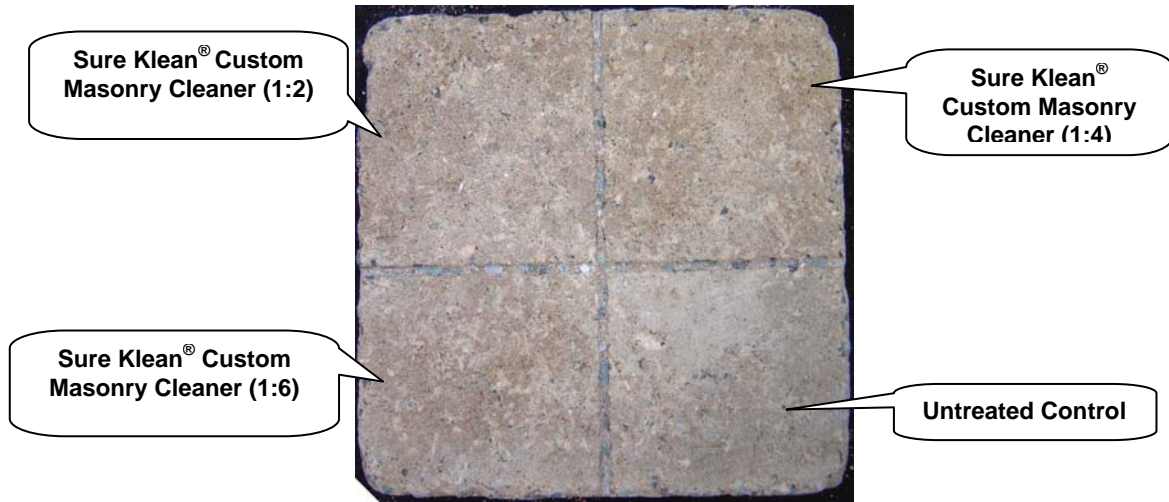


"Buff"; 14 day Cleaning





# PALLET TAG PROGRAM LABORATORY REPORT



### CONCLUSIONS – New Construction Cleaning

Based on the test results, Sure Klean® Custom Masonry Cleaner in all dilutions performed well in removing excess mortar smears on the submitted concrete pavers. The cleaners performed well in removing the mortar soils even after allowing the mortar to remain on the surface of the concrete pavers for 14 days under ideal curing conditions.

It is also recommended that the selected cleaners always be used in the lowest possible concentration, typically a 1:6 dilution for Sure Klean® Custom Masonry Cleaner. To facilitate easier removal of excess mortar and construction dirt while minimizing any potential adverse affect on the concrete pavers, clean within 3 days of construction.

### RECOMMENDATIONS – New Construction Cleaning

Recommendations for cleaning for the concrete pavers submitted by Anchor Block, Brick, NJ, are provided in the chart below. Recommendations are based on the optimum dilution for complete removal of mortar.

| Sample   | New Construction Cleaning<br>(Type S mortar, 14 day cleaning) |
|--|---|
| “Brownstone Tumbled”,<br>“Charcoal”, and<br>“Flash Brown” Concrete<br>Pavers | Sure Klean® Custom Masonry Cleaner (1:4)                      |
| All Other Submitted<br>Concrete Pavers                                       | Sure Klean® Custom Masonry Cleaner (1:6)                      |

The most appropriate cleaner and dilution should be determined on the specific job-site, and will be dependent primarily on the nature and severity of soiling present at that location.

Apply all products in accordance with the manufacturer’s recommendation provided on container labels and product data sheets. On-site testing should be conducted to determine the most appropriate cleaning product and procedures for a particular project. See product literature for additional application and product information.



# PALLET TAG PROGRAM LABORATORY REPORT



**PROSOCO, Inc.**

**Page 10**

## **SECTION B – COLOR UNIFORMITY:**

### **DESCRIPTION OF PRODUCTS EVALUATED – Color Uniformity:**

**Sure Klean® Custom Masonry Cleaner** – A general purpose, concentrated acidic cleaner for most custom masonry and colored concrete. Removes concrete splashes, excess mortar, mud, heavy efflorescence and surface soiling, leaving the masonry clean and uniform with no acid burning or streaking. Liquid concentrate for dilution with 2-6 parts water. Apply by brush or low-pressure spray.

### **TEST METHOD – Color Uniformity Testing:**

Dilution ratios refer to mixtures of parts concentrated cleaner: parts fresh water. Chemical cleaners were evaluated using the following procedure:

1. Pre-wet the surface with water.
2. Apply each cleaner at the appropriate dilutions.
3. Allow appropriate dwell time, as specified.  
Custom Masonry Cleaner..... 3 minutes
4. Reapply the products and moderately agitate with a brush.
5. Pressure rinse thoroughly.\*
6. Allow the sample to dry for at least 18 hours and visually examine.
7. Break the sample in half and compare the through-body surfaces to the cleaned surfaces for the best match.

\*Pressure rinsing was conducted at approximately 1300 psi with a warm water flow rate of 1.9 gallons per minute.



# PALLET TAG PROGRAM LABORATORY REPORT



**TEST RESULTS – Color Uniformity**

|                                  |          |  |                                    |
|----------------------------------|----------|--|------------------------------------|
| <b>Substrate:</b> Concrete Paver |          | <b>Pigment Color:</b> "Brownstone Tumbled" |                                    |
| Product                          | Dilution | Aggregate Exposure                         | Surface Pigment Alteration/Removal |
| Custom Masonry Cleaner           | 1:2      | 4  | 4                                  |
| Custom Masonry Cleaner           | 1:4      | 4  | 4                                  |
| Custom Masonry Cleaner           | 1:6      | 4  | 4                                  |
| <b>Substrate:</b> Concrete Paver |          | <b>Pigment Color:</b> "Buff"               |                                    |
| Product                          | Dilution | Aggregate Exposure                         | Surface Pigment Alteration/Removal |
| Custom Masonry Cleaner           | 1:2      | 4  | 4                                  |
| Custom Masonry Cleaner           | 1:4      | 4  | 4                                  |
| Custom Masonry Cleaner           | 1:6      | 4  | 4                                  |
| <b>Substrate:</b> Concrete Paver |          | <b>Pigment Color:</b> "Charcoal"           |                                    |
| Product                          | Dilution | Aggregate Exposure                         | Surface Pigment Alteration/Removal |
| Custom Masonry Cleaner           | 1:2      | 4  | 4                                  |
| Custom Masonry Cleaner           | 1:4      | 4  | 4                                  |
| Custom Masonry Cleaner           | 1:6      | 4  | 4                                  |
| <b>Substrate:</b> Concrete Paver |          | <b>Pigment Color:</b> "Flash Brown"        |                                    |
| Product                          | Dilution | Aggregate Exposure                         | Surface Pigment Alteration/Removal |
| Custom Masonry Cleaner           | 1:2      | 4  | 4                                  |
| Custom Masonry Cleaner           | 1:4      | 4  | 4                                  |
| Custom Masonry Cleaner           | 1:6      | 4  | 4                                  |
| <b>Substrate:</b> Concrete Paver |          | <b>Pigment Color:</b> "Liberty Blend"      |                                    |
| Product                          | Dilution | Aggregate Exposure                         | Surface Pigment Alteration/Removal |
| Custom Masonry Cleaner           | 1:2      | 3  | 3                                  |
| Custom Masonry Cleaner           | 1:4      | 4  | 4                                  |
| Custom Masonry Cleaner           | 1:6      | 4  | 4                                  |

Scale used for reporting results of both categories

0 – **Worst** match to through-body  
 1 – **Poor** match to through-body  
 2 – **Fair** match to through-body

3 – **Good** match to through-body  
 4 – **Best** match to through-body



# PALLET TAG PROGRAM LABORATORY REPORT



**TEST RESULTS – Color Uniformity**

|                                  |          |                                       |                                    |
|----------------------------------|----------|---------------------------------------|------------------------------------|
| <b>Substrate:</b> Concrete Paver |          | <b>Pigment Color:</b> "Light Gray"    |                                    |
| Product                          | Dilution | Aggregate Exposure                    | Surface Pigment Alteration/Removal |
| Custom Masonry Cleaner           | 1:2      | 4                                     | 4                                  |
| Custom Masonry Cleaner           | 1:4      | 4                                     | 4                                  |
| Custom Masonry Cleaner           | 1:6      | 4                                     | 4                                  |
| <b>Substrate:</b> Concrete Paver |          | <b>Pigment Color:</b> "Moss"          |                                    |
| Product                          | Dilution | Aggregate Exposure                    | Surface Pigment Alteration/Removal |
| Custom Masonry Cleaner           | 1:2      | 4                                     | 4                                  |
| Custom Masonry Cleaner           | 1:4      | 4                                     | 4                                  |
| Custom Masonry Cleaner           | 1:6      | 4                                     | 4                                  |
| <b>Substrate:</b> Concrete Paver |          | <b>Pigment Color:</b> "Sable"         |                                    |
| Product                          | Dilution | Aggregate Exposure                    | Surface Pigment Alteration/Removal |
| Custom Masonry Cleaner           | 1:2      | 4                                     | 4                                  |
| Custom Masonry Cleaner           | 1:4      | 4                                     | 4                                  |
| Custom Masonry Cleaner           | 1:6      | 4                                     | 4                                  |
| <b>Substrate:</b> Concrete Paver |          | <b>Pigment Color:</b> "Sable Tumbled" |                                    |
| Product                          | Dilution | Aggregate Exposure                    | Surface Pigment Alteration/Removal |
| Custom Masonry Cleaner           | 1:2      | 4                                     | 4                                  |
| Custom Masonry Cleaner           | 1:4      | 4                                     | 4                                  |
| Custom Masonry Cleaner           | 1:6      | 4                                     | 4                                  |

Scale used for reporting results of both categories

0 – **Worst** match to through-body  
 1 – **Poor** match to through-body  
 2 – **Fair** match to through-body

3 – **Good** match to through-body  
 4 – **Best** match to through-body



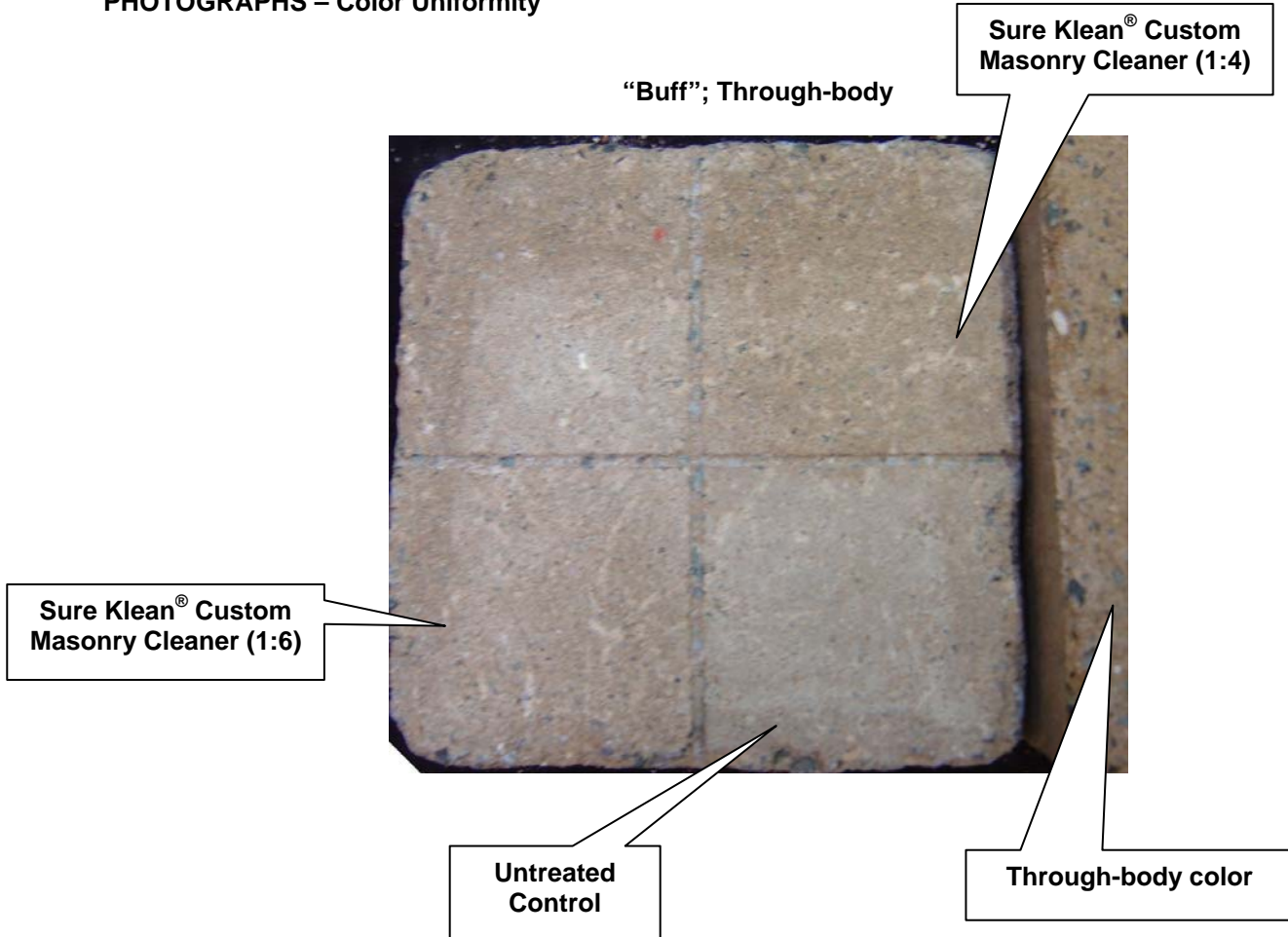
# PALLET TAG PROGRAM LABORATORY REPORT



PROSOCO, Inc.

Page 13

## PHOTOGRAPHS – Color Uniformity





# PALLET TAG PROGRAM LABORATORY REPORT



---

## CONCLUSIONS: COLOR UNIFORMITY:

All dilutions of Sure Klean® Custom Masonry Cleaner tested affected the substrate in a similar manner. Higher concentrations of cleaner removed moderate to heavy concentrations of pigmented matrix, exposing small and large aggregate. Lower concentrations of cleaner removed slight to moderate concentrations of pigmented matrix, exposing small and large aggregate. All dilutions enhanced the natural appearance of the integrally colored CMU.

---

## RECOMMENDATIONS – COLOR UNIFORMITY

Recommendations for color uniformity for each type of concrete paver submitted by Anchor Block, Brick, NJ are provided in the chart below. Recommendations are based on the optimum dilution that provides the best color uniformity.

| Sample   | Color Uniformity                         |
|--|--|
| “Brownstone Tumbled”,<br>“Charcoal”, and<br>“Flash Brown” Concrete<br>Pavers | Sure Klean® Custom Masonry Cleaner (1:4) |
| All Other Submitted<br>Concrete Pavers                                       | Sure Klean® Custom Masonry Cleaner (1:6) |

The most appropriate cleaner and dilution should be determined on the specific job-site, and will be dependent primarily on the nature and severity of soiling present at that location. Pressure rinsing equipment providing at least 400 psi at 4-6 gpm delivered through a 15-40 degree fan spray often produces best cleaning results.

Apply all products in accordance with the manufacturer’s recommendation provided on container labels and product data sheets. On-site testing should be conducted to determine the most appropriate cleaning product and procedures for a particular project. See product literature for additional application and product information.



# PALLET TAG PROGRAM LABORATORY REPORT



PROSOCO, Inc.

Page 15

---

## SECTION C - WATER REPELLENCY

The testing described below evaluates the suitability of water repellent treatments. The surface treatments evaluated were selected for their suitability for application based on the following selection criteria:

1. Weatherproofing properties
2. Color change
3. Ease of application

---

### DESCRIPTIONS OF PRODUCTS EVALUATED - Water Repellency

**Sure Klean® Weather Seal Siloxane WB Concentrate** – A self-emulsifying water-repellent concentrate designed for dilution with fresh water at the job site. This solvent-free blend of silanes and oligomeric alkoxysiloxanes mixes easily with water to produce a penetrating water-repellent ideal for application to dense or porous masonry surfaces.

**Consolideck® Saltguard® WB** – A ready-to-use water-based, VOC compliant silane/siloxane water repellent and “chloride screen” for the protection of concrete and masonry surfaces. Saltguard® WB penetrates more deeply than conventional water- or solvent-based water repellents. Low odor and alkaline stable, Saltguard® WB is ideal for field or in-plant application to concrete and most masonry surfaces. Saltguard® WB protects horizontal and vertical surfaces from moisture intrusion and chemical attack of chloride salts.

---

### SAMPLE PREPARATION - Water Repellency

The submitted samples were scored, allowed to dry, and to reabsorb atmospheric humidity for 24 hours prior to treatment. The treatment method consisted of a wet-on-wet brush application. All treatments were allowed to cure at least 72 hours prior to testing.

---

### TEST METHODS - Water Repellency

#### **Water Absorption Tube Test: RILEM II.4, 60 mph, 20 Minutes**

The water absorption tube test simulating wind driven rain conditions was performed. This test simulates 60 mile per hour wind driven rain conditions for a period of 20 minutes. See Technical Services TECH Note RILEM Tube Test Procedures.



# PALLET TAG PROGRAM LABORATORY REPORT



**TEST RESULTS - Water Repellency**

**Water Absorption Tube Test: RILEM II.4, 60 mph, 20 Minutes**

|                             | <b>RESULTS</b> |
|-----------------------------|----------------|
| <b>"Brownstone Tumbled"</b> |                |
| Untreated Control           | < 40 mph       |
| Saltguard <sup>®</sup> WB   | < 40 mph       |
| Siloxane WB 1:9             | 60 mph         |
| Siloxane WB 1:14            | < 40 mph       |
| <b>"Charcoal"</b>           |                |
| Untreated Control           | < 40 mph       |
| Saltguard <sup>®</sup> WB   | 53 mph         |
| Siloxane WB 1:9             | 60 mph         |
| Siloxane WB 1:14            | 60 mph         |
| <b>"Flash Brown"</b>        |                |
| Untreated Control           | 53 mph         |
| Saltguard <sup>®</sup> WB   | < 40 mph       |
| Siloxane WB 1:9             | 60 mph         |
| Siloxane WB 1:14            | 60 mph         |
| <b>"Liberty Blend"</b>      |                |
| Untreated Control           | < 40 mph       |
| Saltguard <sup>®</sup> WB   | 58 mph         |
| Siloxane WB 1:9             | 60 mph         |
| Siloxane WB 1:14            | 60 mph         |
| <b>"Light Gray"</b>         |                |
| Untreated Control           | < 40 mph       |
| Saltguard <sup>®</sup> WB   | 56 mph         |
| Siloxane WB 1:9             | 60 mph         |
| Siloxane WB 1:14            | 60 mph         |





# PALLET TAG PROGRAM LABORATORY REPORT



PROSOCO, Inc.

Page 17

## TEST RESULTS - Water Repellency

Water Absorption Tube Test: RILEM II.4, 60 mph, 20 Minutes

|                           | RESULTS  |
|---------------------------|----------|
| "Sable"                   |          |
| Untreated Control         | 50 mph   |
| Saltguard <sup>®</sup> WB | 60 mph   |
| Siloxane WB 1:9           | 60 mph   |
| Siloxane WB 1:14          | 60 mph   |
| "Sable Tumbled"           |          |
| Untreated Control         | < 40 mph |
| Saltguard <sup>®</sup> WB | 58 mph   |
| Siloxane WB 1:9           | 57 mph   |
| Siloxane WB 1:14          | 53 mph   |



# PALLET TAG PROGRAM LABORATORY REPORT

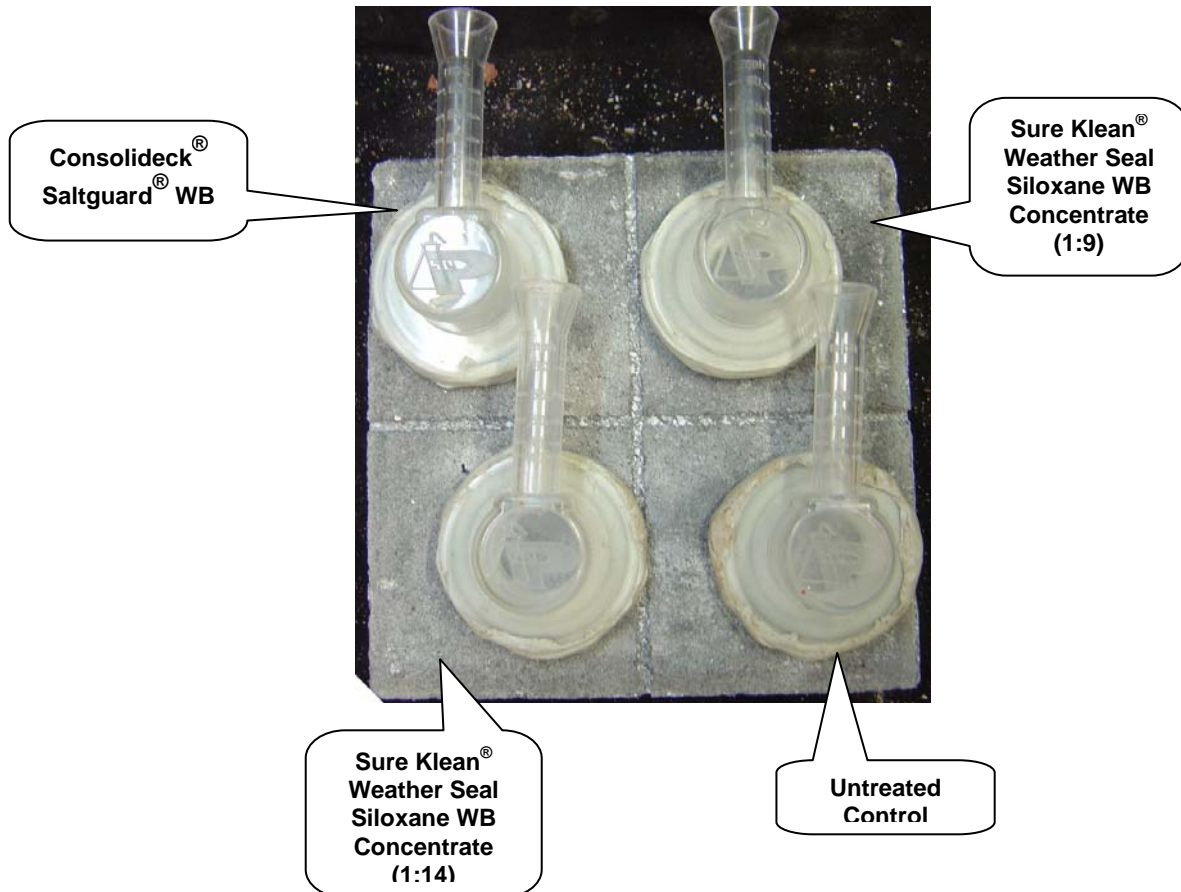


PROSOCO, Inc.

Page 18

## PHOTOGRAPHS – Water Repellency

“Sable”; RILEM testing





# PALLET TAG PROGRAM LABORATORY REPORT



**PROSOCO, Inc.**

**Page 19**

---

## CONCLUSIONS - Water Repellency

Based upon laboratory evaluations, most of the PROSOCO, Inc. products tested provided above average water repellency to each of the submitted samples.

---

## RECOMMENDATIONS – WATER REPELLENCY

Recommendations for water repellency treatment for each type of concrete pavers submitted by Anchor Block, Brick, NJ, are provided in the chart below. Recommendations are based on the treatment that proved most effective and can provide water repellency on all types submitted.

| <b>Block Type</b>                   | <b>Water Repellents</b>  |
|-------------------------------------|--|
| "Flash Brown" Concrete Paver        | Sure Klean <sup>®</sup> Weather Seal Siloxane WB Concentrate<br>(1:9) or (1:14)  |
| "Brownstone Tumbled" Concrete Paver | Sure Klean <sup>®</sup> Weather Seal Siloxane WB Concentrate<br>(1:9)  |
| All Other Submitted Concrete Paver  | Consolideck <sup>®</sup> Saltguard WB<br>OR<br>Sure Klean <sup>®</sup> Weather Seal Siloxane WB Concentrate<br>(1:9), (1:14) |

Apply all products in accordance with the manufacturer's recommendation provided on container labels and product data sheets. On-site testing should be conducted to determine the most appropriate water repellent product and procedures for a particular project. See product literature for additional application and product information.



# PALLET TAG PROGRAM LABORATORY REPORT



**PROSOCO, Inc.**

**Page 20**

## **SECTION D – STAIN REPELLENCY**

### **DESCRIPTION OF PRODUCTS EVALUATED**

These trials were conducted to determine the effectiveness of treatments in preventing food, oil, and miscellaneous staining on the submitted samples.

### **Products Evaluated for Stain Protection:**

**Stand Off® SLX100 Water & Oil Repellent** - Combines water and oil repellency on most substrates to prevent staining by waterborne and oily substances. This modified “neat” silane system offers invisible protection and low volatility. The small molecular structure of SLX100 allows for maximum penetration at coverage rates higher than that of conventional silanes. Depth of penetration is controlled by the application rate (loading rate). This makes SLX100 ideal for protecting granite and other dense, color-sensitive surfaces.

### **Kitchen Products Evaluated:**

Coca Cola  
Ketchup  
Mustard  
Red wine  
Balsamic Vinegar  
Soy Sauce  
Olive Oil  
Wesson Oil  
Coffee

### **Temperature:**

ambient (~70°F)  
ambient (~70°F)  
ambient (~70°F)  
ambient (~70°F)  
ambient (~70°F)  
ambient (~70°F)  
ambient (~70°F)  
ambient (~250°F)  
ambient (~120°F)

## **SAMPLE PREPARATION – Stain Repellency**

Samples were cleaned with Enviro Klean® 2010 All Surface Cleaner diluted with 10 parts water, allowed to dry and absorb atmospheric moisture for 24 hours prior to treatment. The method of application for protective treatments followed the PROSOCO, Inc. 2004 Product Guide.



# PALLET TAG PROGRAM LABORATORY REPORT



## TEST METHOD – Stain Repellency

### Surface Beading Evaluation

The food and oil products were applied to the test areas by using a dropper creating a bead 0.5 – 1.0 cm in diameter. The beading properties of the oils and liquids were visually evaluated within two minutes after application. The results are reported as a rating based on the angle of contact between the base of the droplet and the substrate. A rating of “1 or 2” indicated the smallest angle of contact (<90°) which correlates to “above average” repellency. A rating of “3 or 4” indicates “average” repellency. A rating of “5 or greater” indicated that the oil quickly absorbed into the substrate and correlates to “below average” repellency.

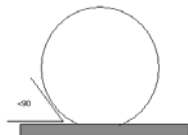
**Note: Non-free flowing staining agents such as ketchup and mustard are applied in a blob and not evaluated for their beading properties.**

#### Rating System (1-5)

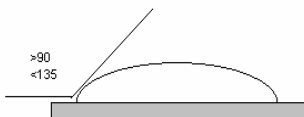
1. No wetting of contact area (no darkening); angle less than 90°



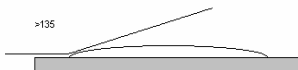
2. Wetting contained to the contact area (slight darkening); angle is less than 90°



3. Wetting contained to the contact area (slight darkening); angle is greater than 90°, but less than 135°.



4. Wetting beyond the contact area (darkening); angle is greater than 135°



5. Wetting beyond the contact area (darkening); angle is flat.



### Stain Removal Evaluation

The soiling agents were allowed to dwell on the treated and untreated substrates for times of 24 hours, 4 hours, 1 hour, and 10 minutes. The test areas were then cleaned with Enviro Klean® 2010 All Surface Cleaner diluted 1 part concentrate to 10 parts fresh water and scrubbed under a stream of running water from a faucet. Samples were allowed to dry for 24 hours. Evaluation consisted of a visual examination of the tested areas to determine the percentage of staining removal.



# PALLET TAG PROGRAM LABORATORY REPORT



PROSOCO, Inc.

Page 22

**TEST RESULTS – Surface Beading**

| <b>“Brownstone Tumbled”</b> |           |         |         |          |                  |           |           |            |            |
|-----------------------------|-----------|---------|---------|----------|------------------|-----------|-----------|------------|------------|
|                             | Coco-Cola | Ketchup | Mustard | Red Wine | Balsamic Vinegar | Soy Sauce | Olive Oil | Wesson Oil | Hot Coffee |
| Untreated Control           | 3         | -       | -       | 3        | 3                | 3         | 3         | 3          | 3          |
| SLX 100                     | 2         | -       | -       | 2        | 2                | 2         | 2         | 2          | 2          |
| <b>“Charcoal”</b>           |           |         |         |          |                  |           |           |            |            |
|                             | Coco-Cola | Ketchup | Mustard | Red Wine | Balsamic Vinegar | Soy Sauce | Olive Oil | Wesson Oil | Hot Coffee |
| Untreated Control           | 3         | -       | -       | 3        | 3                | 3         | 3         | 3          | 3          |
| SLX 100                     | 2         | -       | -       | 2        | 2                | 2         | 2         | 2          | 2          |
| <b>“Flash Brown”</b>        |           |         |         |          |                  |           |           |            |            |
|                             | Coco-Cola | Ketchup | Mustard | Red Wine | Balsamic Vinegar | Soy Sauce | Olive Oil | Wesson Oil | Hot Coffee |
| Untreated Control           | 3         | -       | -       | 3        | 3                | 3         | 3         | 3          | 3          |
| SLX 100                     | 2         | -       | -       | 2        | 2                | 2         | 2         | 2          | 2          |
| <b>“Liberty Blend”</b>      |           |         |         |          |                  |           |           |            |            |
|                             | Coco-Cola | Ketchup | Mustard | Red Wine | Balsamic Vinegar | Soy Sauce | Olive Oil | Wesson Oil | Hot Coffee |
| Untreated Control           | 3         | -       | -       | 3        | 3                | 3         | 3         | 3          | 3          |
| SLX 100                     | 2         | -       | -       | 2        | 2                | 2         | 2         | 2          | 2          |
| <b>“Light Gray”</b>         |           |         |         |          |                  |           |           |            |            |
|                             | Coco-Cola | Ketchup | Mustard | Red Wine | Balsamic Vinegar | Soy Sauce | Olive Oil | Wesson Oil | Hot Coffee |
| Untreated Control           | 3         | -       | -       | 3        | 3                | 3         | 3         | 3          | 3          |
| SLX 100                     | 2         | -       | -       | 2        | 2                | 2         | 2         | 2          | 2          |
| <b>“Sable”</b>              |           |         |         |          |                  |           |           |            |            |
|                             | Coco-Cola | Ketchup | Mustard | Red Wine | Balsamic Vinegar | Soy Sauce | Olive Oil | Wesson Oil | Hot Coffee |
| Untreated Control           | 3         | -       | -       | 3        | 3                | 3         | 3         | 3          | 3          |
| SLX 100                     | 2         | -       | -       | 2        | 2                | 2         | 2         | 2          | 2          |
| <b>“Sable Tumbled”</b>      |           |         |         |          |                  |           |           |            |            |
|                             | Coco-Cola | Ketchup | Mustard | Red Wine | Balsamic Vinegar | Soy Sauce | Olive Oil | Wesson Oil | Hot Coffee |
| Untreated Control           | 3         | -       | -       | 3        | 3                | 3         | 3         | 3          | 3          |
| SLX 100                     | 2         | -       | -       | 2        | 2                | 2         | 2         | 2          | 2          |



# PALLET TAG PROGRAM LABORATORY REPORT



**PROSOCO, Inc.**

Page 23

**TEST RESULTS – STAINING REMOVAL**

% Removal

**“Brownstone Tumbled”**

| Untreated Control                        |           |         |         |          |                  |           |           |            |            |
|--|-----------|---------|---------|----------|------------------|-----------|-----------|------------|------------|
|  | Coca Cola | Ketchup | Mustard | Red Wine | Balsamic Vinegar | Soy Sauce | Olive Oil | Wesson Oil | Hot Coffee |
| 24 hr                                    | 90%       | 90%     | 90%     | 90%      | 90%              | 90%       | <1%       | <1%        | 100%       |
| 4 hour                                   | 100%      | 100%    | 100%    | 100%     | 100%             | 100%      | <1%       | <1%        | 100%       |
| 1 hour                                   | 100%      | 100%    | 100%    | 100%     | 100%             | 100%      | <1%       | <1%        | 100%       |
| 10 min.                                  | 100%      | 100%    | 100%    | 100%     | 100%             | 100%      | <1%       | <1%        | 100%       |
| Stand Off® SLX 100 Water & Oil Repellent |           |         |         |          |                  |           |           |            |            |
|  | Coca Cola | Ketchup | Mustard | Red Wine | Balsamic Vinegar | Soy Sauce | Olive Oil | Wesson Oil | Hot Coffee |
| 24 hr                                    | 100%      | 100%    | 95%     | 100%     | 100%             | 90%       | 50%       | 50%        | 100%       |
| 4 hour                                   | 100%      | 100%    | 100%    | 100%     | 100%             | 100%      | 80%       | 80%        | 100%       |
| 1 hour                                   | 100%      | 100%    | 100%    | 100%     | 100%             | 100%      | 100%      | 100%       | 100%       |
| 10 min.                                  | 100%      | 100%    | 100%    | 100%     | 100%             | 100%      | 100%      | 100%       | 100%       |

**“Charcoal”**

| Untreated Control                        |           |         |         |          |                  |           |           |            |            |
|--|-----------|---------|---------|----------|------------------|-----------|-----------|------------|------------|
|  | Coca Cola | Ketchup | Mustard | Red Wine | Balsamic Vinegar | Soy Sauce | Olive Oil | Wesson Oil | Hot Coffee |
| 24 hr                                    | 100%      | 90%     | 90%     | 90%      | 90%              | 90%       | <1%       | <1%        | 95%        |
| 4 hour                                   | 100%      | 90%     | 90%     | 90%      | 90%              | 90%       | <1%       | <1%        | 95%        |
| 1 hour                                   | 100%      | 90%     | 90%     | 90%      | 90%              | 90%       | <1%       | <1%        | 95%        |
| 10 min.                                  | 100%      | 100%    | 100%    | 100%     | 100%             | 100%      | <1%       | <1%        | 100%       |
| Stand Off® SLX 100 Water & Oil Repellent |           |         |         |          |                  |           |           |            |            |
|  | Coca Cola | Ketchup | Mustard | Red Wine | Balsamic Vinegar | Soy Sauce | Olive Oil | Wesson Oil | Hot Coffee |
| 24 hr                                    | 100%      | 90%     | 90%     | 90%      | 90%              | 90%       | 70%       | 70%        | 100%       |
| 4 hour                                   | 100%      | 95%     | 95%     | 100%     | 100%             | 100%      | 80%       | 80%        | 100%       |
| 1 hour                                   | 100%      | 100%    | 100%    | 100%     | 100%             | 100%      | 100%      | 100%       | 100%       |
| 10 min.                                  | 100%      | 100%    | 100%    | 100%     | 100%             | 100%      | 100%      | 100%       | 100%       |

**“Flash Brown”**

| Untreated Control                        |           |         |         |          |                  |           |           |            |            |
|--|-----------|---------|---------|----------|------------------|-----------|-----------|------------|------------|
|  | Coca Cola | Ketchup | Mustard | Red Wine | Balsamic Vinegar | Soy Sauce | Olive Oil | Wesson Oil | Hot Coffee |
| 24 hr                                    | 100%      | 100%    | 100%    | 90%      | 90%              | 90%       | 50%       | 50%        | 100%       |
| 4 hour                                   | 100%      | 100%    | 100%    | 90%      | 90%              | 90%       | 60%       | 60%        | 100%       |
| 1 hour                                   | 100%      | 100%    | 100%    | 100%     | 100%             | 100%      | 70%       | 70%        | 100%       |
| 10 min.                                  | 100%      | 100%    | 100%    | 100%     | 100%             | 100%      | 80%       | 80%        | 100%       |
| Stand Off® SLX 100 Water & Oil Repellent |           |         |         |          |                  |           |           |            |            |
|  | Coca Cola | Ketchup | Mustard | Red Wine | Balsamic Vinegar | Soy Sauce | Olive Oil | Wesson Oil | Hot Coffee |
| 24 hr                                    | 100%      | 95%     | 95%     | 95%      | 90%              | 95%       | 90%       | 90%        | 100%       |
| 4 hour                                   | 100%      | 100%    | 100%    | 100%     | 90%              | 100%      | 90%       | 90%        | 100%       |
| 1 hour                                   | 100%      | 100%    | 100%    | 100%     | 100%             | 100%      | 90%       | 90%        | 100%       |
| 10 min.                                  | 100%      | 100%    | 100%    | 100%     | 100%             | 100%      | 90%       | 90%        | 100%       |



# PALLET TAG PROGRAM LABORATORY REPORT



**PROSOCO, Inc.**

Page 24

**TEST RESULTS – STAINING REMOVAL**

% Removal

**“Liberty Blend”**

| <b>Untreated Control</b>                            |                  |                |                |                 |                         |                  |                  |                   |                   |
|---|------------------|----------------|----------------|-----------------|-------------------------|------------------|------------------|-------------------|-------------------|
|   | <b>Coca Cola</b> | <b>Ketchup</b> | <b>Mustard</b> | <b>Red Wine</b> | <b>Balsamic Vinegar</b> | <b>Soy Sauce</b> | <b>Olive Oil</b> | <b>Wesson Oil</b> | <b>Hot Coffee</b> |
| <b>24 hr</b>  | 90%              | 90%            | 90%            | 90%             | 90%                     | 90%              | <1%              | <1%               | 100%              |
| <b>4 hour</b>                                       | 95%              | 90%            | 90%            | 90%             | 90%                     | 90%              | <1%              | <1%               | 100%              |
| <b>1 hour</b>                                       | 100%             | 90%            | 90%            | 90%             | 90%                     | 90%              | <1%              | <1%               | 100%              |
| <b>10 min.</b>                                      | 100%             | 100%           | 100%           | 100%            | 100%                    | 100%             | 100%             | 100%              | 100%              |
| <b>Stand Off® SLX 100 Water &amp; Oil Repellent</b> |                  |                |                |                 |                         |                  |                  |                   |                   |
|   | <b>Coca Cola</b> | <b>Ketchup</b> | <b>Mustard</b> | <b>Red Wine</b> | <b>Balsamic Vinegar</b> | <b>Soy Sauce</b> | <b>Olive Oil</b> | <b>Wesson Oil</b> | <b>Hot Coffee</b> |
| <b>24 hr</b>  | 100%             | 90%            | 90%            | 100%            | 100%                    | 100%             | 90%              | 90%               | 100%              |
| <b>4 hour</b>                                       | 100%             | 90%            | 90%            | 100%            | 100%                    | 100%             | 90%              | 90%               | 100%              |
| <b>1 hour</b>                                       | 100%             | 90%            | 90%            | 100%            | 100%                    | 100%             | 90%              | 90%               | 100%              |
| <b>10 min.</b>                                      | 100%             | 100%           | 100%           | 100%            | 100%                    | 100%             | 90%              | 90%               | 100%              |

**“Light Gray”**

| <b>Untreated Control</b>                            |                  |                |                |                 |                         |                  |                  |                   |                   |
|---|------------------|----------------|----------------|-----------------|-------------------------|------------------|------------------|-------------------|-------------------|
|   | <b>Coca Cola</b> | <b>Ketchup</b> | <b>Mustard</b> | <b>Red Wine</b> | <b>Balsamic Vinegar</b> | <b>Soy Sauce</b> | <b>Olive Oil</b> | <b>Wesson Oil</b> | <b>Hot Coffee</b> |
| <b>24 hr</b>  | 100%             | 90%            | 100%           | 100%            | 100%                    | 100%             | 50%              | 50%               | 100%              |
| <b>4 hour</b>                                       | 100%             | 95%            | 100%           | 100%            | 100%                    | 100%             | 60%              | 60%               | 100%              |
| <b>1 hour</b>                                       | 100%             | 100%           | 100%           | 100%            | 100%                    | 100%             | 70%              | 70%               | 100%              |
| <b>10 min.</b>                                      | 100%             | 100%           | 100%           | 100%            | 100%                    | 100%             | 80%              | 80%               | 100%              |
| <b>Stand Off® SLX 100 Water &amp; Oil Repellent</b> |                  |                |                |                 |                         |                  |                  |                   |                   |
|   | <b>Coca Cola</b> | <b>Ketchup</b> | <b>Mustard</b> | <b>Red Wine</b> | <b>Balsamic Vinegar</b> | <b>Soy Sauce</b> | <b>Olive Oil</b> | <b>Wesson Oil</b> | <b>Hot Coffee</b> |
| <b>24 hr</b>  | 100%             | 100%           | 90%            | 100%            | 100%                    | 100%             | 80%              | 100%              | 100%              |
| <b>4 hour</b>                                       | 100%             | 100%           | 95%            | 100%            | 100%                    | 100%             | 100%             | 100%              | 100%              |
| <b>1 hour</b>                                       | 100%             | 100%           | 100%           | 100%            | 100%                    | 100%             | 100%             | 100%              | 100%              |
| <b>10 min.</b>                                      | 100%             | 100%           | 100%           | 100%            | 100%                    | 100%             | 100%             | 100%              | 100%              |

**“Sable”**

| <b>Untreated Control</b>                            |                  |                |                |                 |                         |                  |                  |                   |                   |
|---|------------------|----------------|----------------|-----------------|-------------------------|------------------|------------------|-------------------|-------------------|
|   | <b>Coca Cola</b> | <b>Ketchup</b> | <b>Mustard</b> | <b>Red Wine</b> | <b>Balsamic Vinegar</b> | <b>Soy Sauce</b> | <b>Olive Oil</b> | <b>Wesson Oil</b> | <b>Hot Coffee</b> |
| <b>24 hr</b>  | 100%             | 100%           | 100%           | 90%             | 90%                     | 90%              | 90%              | 90%               | 100%              |
| <b>4 hour</b>                                       | 100%             | 100%           | 100%           | 90%             | 90%                     | 90%              | 90%              | 90%               | 100%              |
| <b>1 hour</b>                                       | 100%             | 100%           | 100%           | 100%            | 90%                     | 90%              | 90%              | 90%               | 100%              |
| <b>10 min.</b>                                      | 100%             | 100%           | 100%           | 100%            | 100%                    | 100%             | 100%             | 100%              | 100%              |
| <b>Stand Off® SLX 100 Water &amp; Oil Repellent</b> |                  |                |                |                 |                         |                  |                  |                   |                   |
|   | <b>Coca Cola</b> | <b>Ketchup</b> | <b>Mustard</b> | <b>Red Wine</b> | <b>Balsamic Vinegar</b> | <b>Soy Sauce</b> | <b>Olive Oil</b> | <b>Wesson Oil</b> | <b>Hot Coffee</b> |
| <b>24 hr</b>  | 100%             | 90%            | 100%           | 100%            | 100%                    | 90%              | 50%              | 50%               | 100%              |
| <b>4 hour</b>                                       | 100%             | 95%            | 100%           | 100%            | 100%                    | 100%             | 60%              | 60%               | 100%              |
| <b>1 hour</b>                                       | 100%             | 100%           | 100%           | 100%            | 100%                    | 100%             | 70%              | 70%               | 100%              |
| <b>10 min.</b>                                      | 100%             | 100%           | 100%           | 100%            | 100%                    | 100%             | 80%              | 80%               | 100%              |





# PALLET TAG PROGRAM LABORATORY REPORT



**PROSOCO, Inc.**

Page 25

**TEST RESULTS – STAINING REMOVAL**

% Removal

**“Sable Tumbled”**

| <b>Untreated Control</b>                            |                  |                |                |                 |                         |                  |                  |                   |                   |
|---|------------------|----------------|----------------|-----------------|-------------------------|------------------|------------------|-------------------|-------------------|
|   | <b>Coca Cola</b> | <b>Ketchup</b> | <b>Mustard</b> | <b>Red Wine</b> | <b>Balsamic Vinegar</b> | <b>Soy Sauce</b> | <b>Olive Oil</b> | <b>Wesson Oil</b> | <b>Hot Coffee</b> |
| <b>24 hr</b>  | 80%              | 70%            | 70%            | 90%             | 90%                     | 90%              | <1%              | <1%               | 100%              |
| <b>4 hour</b>                                       | 90%              | 80%            | 80%            | 90%             | 100%                    | 100%             | <1%              | <1%               | 100%              |
| <b>1 hour</b>                                       | 100%             | 100%           | 100%           | 100%            | 100%                    | 100%             | <1%              | <1%               | 100%              |
| <b>10 min.</b>                                      | 100%             | 100%           | 100%           | 100%            | 100%                    | 100%             | <1%              | <1%               | 100%              |
| <b>Stand Off® SLX 100 Water &amp; Oil Repellent</b> |                  |                |                |                 |                         |                  |                  |                   |                   |
|   | <b>Coca Cola</b> | <b>Ketchup</b> | <b>Mustard</b> | <b>Red Wine</b> | <b>Balsamic Vinegar</b> | <b>Soy Sauce</b> | <b>Olive Oil</b> | <b>Wesson Oil</b> | <b>Hot Coffee</b> |
| <b>24 hr</b>  | 90%              | 90%            | 90%            | 100%            | 100%                    | 100%             | 80%              | 80%               | 90%               |
| <b>4 hour</b>                                       | 90%              | 90%            | 90%            | 100%            | 100%                    | 100%             | 80%              | 80%               | 90%               |
| <b>1 hour</b>                                       | 90%              | 90%            | 90%            | 100%            | 100%                    | 100%             | 90%              | 90%               | 90%               |
| <b>10 min.</b>                                      | 100%             | 100%           | 100%           | 100%            | 100%                    | 100%             | 90%              | 90%               | 100%              |

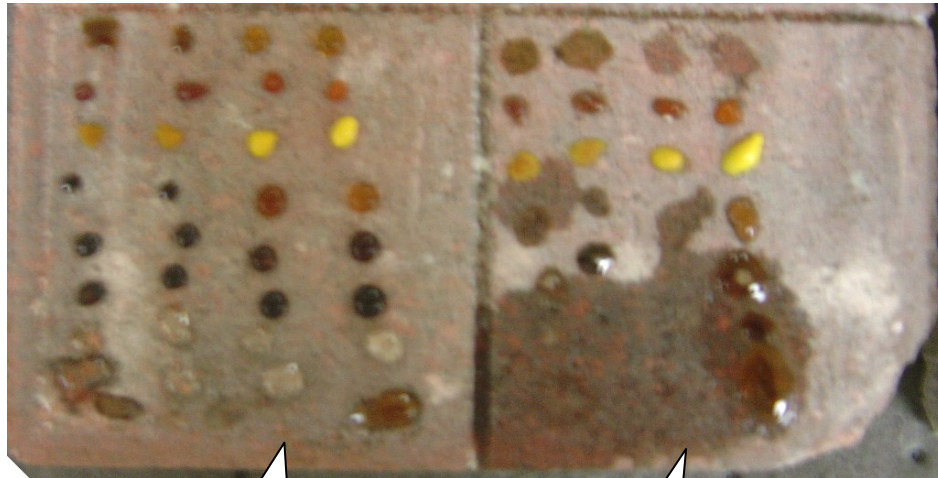


# PALLET TAG PROGRAM LABORATORY REPORT



## PHOTOGRAPHS – Stain Repellency

“Liberty Blend”; Stains Applied



Stand Off®  
SLX100 Water &  
Oil Repellent

Untreated  
Control

“Liberty Blend”; Stains Removed



Stand Off® SLX 100  
Water & Oil  
Repellent

Untreated  
Control



# PALLET TAG PROGRAM LABORATORY REPORT



**PROSOCO, Inc.**

**Page 27**

---

## **CONCLUSIONS – Stain Repellency**

Based upon laboratory evaluations, Stand Off<sup>®</sup> SLX100 Water & Oil Repellent exhibited good surface beading characteristics and was effective in repelling the staining agents on the concrete paver samples.

---

## **RECOMMENDATIONS – Stain Repellency**

Recommendations for stain resistance treatment for each type of concrete paver submitted by Anchor Block, Brick, NJ, are provided in the charts below. Recommendations are based on the treatments that proved most effective for providing stain repellency on all types submitted.

| <b>Sample</b>              | <b>Stain Repellent</b>                              | <b>Maintenance Cleaner</b>                                      |
|----------------------------|---|---|
| All Tested Concrete Pavers | Stand Off <sup>®</sup> SLX100 Water & Oil Repellent | Enviro Klean <sup>®</sup><br>2010 All Surface Cleaner<br>(1:10) |

Apply all products in accordance with the manufacturer's recommendation provided on container labels and product data sheets. On-site testing should be conducted to determine the most appropriate product and procedure for a particular project. See product literature for application and product information.

Nathan R. Colaner  
Technical Analyst

NRC/csm



---

***Laboratory Report***

**Pallet Tag Program Evaluation**

**Anchor Block  
Brick, NJ**

***Project No. 0403-15 PTP***

***Prepared For:***

**Ted Sullivan  
Anchor Block  
975 Burnt Tavern Road  
Brick, NJ 08724**

***Prepared By:***



***PROSOCO, Inc.  
June 2004***