

Laboratory Report

Pallet Tag Program Evaluation

**Superlite Block
Phoenix, AZ**

Project No. 0301-04 PTP

Prepared For:

Carl Huffman, Sr.

**Superlite Block
4150 W. Turney
Phoenix, AZ 85019**

Prepared By:



PROSOCO, Inc.

February 2003



PALLET TAG PROGRAM LABORATORY REPORT



PROSOCO, Inc.

Page 1

TABLE OF CONTENTS

SAMPLES SUBMITTED.....	3
PURPOSE OF TEST	4
PRODUCTS EVALUATED.....	5

SECTION A – CLEANING INTEGRALLY COLORED CMU's

DESCRIPTION OF PRODUCTS EVALUATED.....	6
TEST METHOD.....	6
TEST RESULTS	7-9
CONCLUSIONS	10
RECOMMENDATIONS	10

SECTION B – COLOR UNIFORMITY

DESCRIPTION OF PRODUCTS EVALUATED.....	11
TEST METHOD.....	11
TEST RESULTS	12-17
PHOTOGRAPH OF CMU COLOR UNIFORMITY TESTING.....	18
CONCLUSIONS	19
RECOMMENDATIONS	19

SECTION C - PROTECTIVE WATER REPELLENTS

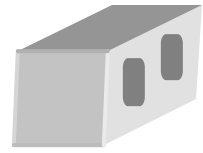
DESCRIPTION OF PRODUCTS EVALUATED.....	20
TEST METHODS.....	20
TEST RESULTS	21-26
PHOTOGRAPH OF CMU WATER REPELLENCY	27
CONCLUSIONS	28
RECOMMENDATIONS	28

SECTION D – GRAFFITI CONTROL

DESCRIPTION OF PRODUCTS EVALUATED.....	29
TEST METHOD.....	30
TEST RESULTS	31-37
PHOTOGRAPHS OF CMU GRAFFITI TESTING	38
CONCLUSIONS	39
RECOMMENDATIONS	39



PALLET TAG PROGRAM LABORATORY REPORT



PROSOCO, Inc.

Page 2

ATTACHMENTS

Technical Services TECH Note RILEM Tube Test Procedures

Product Data literature for all products evaluated



PALLET TAG PROGRAM LABORATORY REPORT



PROSOCO, Inc.

Page 3

FOR: Carl Huffman, Sr.
Cc: Paul Tessier
Stephen Dean

SUBJECT: Superlite Block
Phoenix, AZ

DATE: February 28, 2003

PROJECT: 0301-04 PTP

SAMPLES SUBMITTED: Twenty-four types of integrally colored CMU's.

<u>Block</u>	<u>Color Code/Color Name</u>	<u>Size</u>
(3) "CL Standards" CMU's	"60.16.0"/"Peach"	8" x 8" x 16"
(3) "CL Standards" CMU's	"60.20.0"/"Purple Haze"	8" x 8" x 16"
(3) "CL Standards" CMU's	"60.11.0"/"Tierra Brown"	8" x 8" x 16"
(3) "CL Standards" CMU's	"60.25.0"/"Fuego Red"	8" x 8" x 16"
(3) "CL Standards" CMU's	"60.13.0"/"Cocoa Brown"	8" x 8" x 16"
(3) "CL Standards" CMU's	"60.26.0"/"Sedona Red"	8" x 8" x 16"
(3) "CL Standards" CMU's	"60.12.0"/"Umber Brown"	8" x 8" x 16"
(3) "CL Standards" CMU's	"60.15.0"/"Charcoal"	8" x 8" x 16"
(3) "Split-face" CMU's	"60.16.0"/"Peach"	8" x 8" x 16"
(3) "Split-face" CMU's	"60.20.0"/"Purple Haze"	8" x 8" x 16"
(3) "Split-face" CMU's	"60.11.0"/"Tierra Brown"	8" x 8" x 16"
(3) "Split-face" CMU's	"60.25.0"/"Fuego Red"	8" x 8" x 16"
(3) "Split-face" CMU's	"60.13.0"/"Cocoa Brown"	8" x 8" x 16"
(3) "Split-face" CMU's	"60.26.0"/"Sedona Red"	8" x 8" x 16"
(3) "Split-face" CMU's	"60.12.0"/"Umber Brown"	8" x 8" x 16"
(3) "Split-face" CMU's	"60.15.0"/"Charcoal"	8" x 8" x 16"
(3) "Founders" CMU's	"33.36.0"/"Autumn Blend"	8" x 4" x 16"
(3) "Founders" CMU's	"33.37.0"/"Hayden Blend"	8" x 4" x 16"
(3) "Founders" CMU's	"33.38.0"/"Canyon Blend"	8" x 4" x 16"
(3) "Slump" CMU's	"20.01.0"/"Desert Beige"	8" x 4" x 16"
(3) "Slump" CMU's	"20.02.0"/"Spanish Brown"	8" x 4" x 16"
(3) "Slump" CMU's	"20.03.0"/"Adobe Buff"	8" x 4" x 16"
(3) "Fence" CMU's	"50.08.0"/"Beige"	4" x 8" x 16"
(3) "Fence" CMU's	"50.09.0"/"Brown"	4" x 8" x 16"

Submitted by: Paul Tessier



PALLET TAG PROGRAM LABORATORY REPORT



PROSOCO, Inc.

Page 4

PURPOSE OF TESTING:

Eight types of integrally colored “CL Standards”, eight types of integrally colored “Split-face”, three types of integrally colored “Founders”, three types of integrally colored “Slump”, and two types of integrally colored “Fence” blocks with large, small and fine aggregate were submitted for testing using PROSOCO’s new construction cleaning and water repellent products.

A. Cleaning Concrete Masonry Units: Sure Klean[®] Custom Masonry Cleaner and Sure Klean[®] Burnished Custom Masonry Cleaner were evaluated for removal of laboratory applied mortar.

To simulate new construction soiling, all CMU’s are placed on a bench with finished surface facing upward. Hollow cylinders measuring 50 mm in diameter and 75 mm tall are positioned on top of each CMU and filled with a wet mixture of Ash Grove[®] Type S mortar. The wet, mortar-filled cylinder is allowed to remain in contact with the CMU for 10 minutes before removal.

Heavy deposits of mortar are removed with dry scraping after 24 hours. Prepared cleaning solutions are then evaluated for their effectiveness in removing residual Ash Grove[®] Type S mortar staining after 3 days, 7 days, and 14 days of curing.

B. Color Uniformity Testing* - Sure Klean[®] Custom Masonry Cleaner and Sure Klean[®] Burnished Custom Masonry Cleaner were evaluated at various dilutions to determine the optimal concentration of cleaner that leaves the external surface looking most like the natural through-body color of the CMU. Color uniformity was evaluated by comparing aggregate exposure and surface pigment alternation/removal of each cleaned surface compared to the natural through-body color of the CMU.

Aggregate Exposure is the visual examination comparing aggregate exposure of the interior, through-body section of CMU to surfaces cleaned with selected product(s) at given dilutions.

Surface Pigment Alteration/Removal* is the visual examination comparing the pigmentation of the interior, through-body section of the CMU to surfaces cleaned with selected product(s) at given dilutions.

The following is the scale used for reporting results of both categories:

0 – Worst match to through-body	3 – Good match to through-body
1 – Poor match to through-body	4 – Best match to through-body
2 – Fair match to through-body	

*** NOTE: When cleaning integrally colored CMU.**

Integrally colored concrete masonry units (CMU’s) frequently have high amounts of pigments concentrated on the surface of the cured concrete unit. Variation of surface pigment concentrations from one CMU to the next creates a blotchy appearance in the completed wall. Allowed to remain on the surface of the CMU, the weakly bound pigment will weather and streak, further detracting from the appearance of the completed CMU wall.

In addition to removing excess mortar and construction related soiling, the goal of any cleaning operation undertaken on integrally colored CMU should include removal of unnaturally high concentrations of surface pigment. By revealing the natural through-body color on the integrally colored unit, the overall color uniformity and weathering resistance of the completed CMU wall is improved.

C. Protective Water Repellents - Sure Klean[®] Custom Masonry Sealer and Sure Klean[®] Weather Seal Siloxane WB Concentrate were evaluated for their ability to provide water repellency to the submitted samples.

D. Graffiti Control – Sure Klean[®] Custom Masonry Sealer was evaluated for its ability to control graffiti on the submitted samples. Defacer Eraser[®] Graffiti Wipe and Sure Klean[®] Fast Acting Stripper were evaluated for their ability to remove graffiti from the submitted samples.



PALLET TAG PROGRAM LABORATORY REPORT



PROSOCO, Inc.

Page 5

PRODUCTS EVALUATED FOR CLEANING AND COLOR UNIFORMITY

Block Type	Product	Dilution
All CMU's Submitted	Sure Klean [®] Custom Masonry Cleaner	1:2, 1:6
	Sure Klean [®] Burnished Custom Masonry Cleaner	1:3

WATER REPELLENT PRODUCTS EVALUATED

Block Type	Product	Dilution
All CMU's Submitted	Sure Klean [®] Custom Masonry Sealer	Concentrate
	Sure Klean [®] Weather Seal Siloxane WB Concentrate	1:9, 1:14

GRAFFITI CONTROL PRODUCTS EVALUATED

Sample	Product
All CMU's Submitted	Sure Klean [®] Custom Masonry Sealer

GRAFFITI REMOVAL PRODUCTS EVALUATED

Sample	Product
All CMU's Submitted	Defacer Eraser [®] Graffiti Wipe Sure Klean [®] Fast Acting Stripper



PALLET TAG PROGRAM LABORATORY REPORT



PROSOCO, Inc.

Page 6

SECTION A – CLEANING INTEGRALLY COLORED CMU's

DESCRIPTION OF PRODUCTS EVALUATED

These cleaning trials were conducted to determine the optimal cleaning/cure time combination.

Sure Klean® Custom Masonry Cleaner – A general purpose, concentrated acidic cleaner for most custom masonry and colored concrete. Removes concrete splashes, excess mortar, mud, heavy efflorescence and surface soiling, leaving the masonry clean and uniform with no acid burning or streaking. Liquid concentrate for dilution with 2-6 parts water. Apply by brush or low-pressure spray.

Sure Klean® Burnished Custom Masonry Cleaner - A general-purpose, non-etching acidic cleaner that removes rust, mud, oil, atmospheric dirt, mortar smears and other stains without altering the surface texture. Burnished Custom Masonry Cleaner adds depth to colors, brightens white matrices and exposed aggregate.

TEST METHOD – Cleaning

Dilution ratios refer to mixtures of parts concentrated cleaner : parts fresh water. Chemical cleaners were evaluated using the following procedure:

1. Prewet the surface with water.
2. Apply each cleaner at the appropriate dilutions.
3. Allow appropriate dwell time for each cleaner:

Custom Masonry Cleaner	3 minutes
Burnished Custom Masonry Cleaner	5 Minutes
4. Reapply the products and moderately agitate with a brush.
5. Pressure rinse thoroughly.*
6. Allow the surface to dry for at least 18 hours and visually examine.

* Pressure rinsing was conducted at approximately 1300 psi with a warm water flow rate of 1.9 gallons per minute.



PALLET TAG PROGRAM LABORATORY REPORT



PROSOCO, Inc.

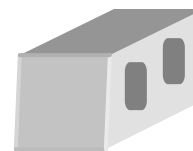
Page 7

TEST RESULTS – Cleaning (% Removal)

“60.16.0 Peach” CL Standard				
Product	Dilution	3 day	7 day	14 day
Custom Masonry Cleaner	1:2	100%	100%	100%
Custom Masonry Cleaner	1:6	100%	100%	100%
Burnished Custom Masonry Cleaner	1:3	100%	100%	100%
“60.20.0 Purple Haze” CL Standard				
Product	Dilution	3 day	7 day	14 day
Custom Masonry Cleaner	1:2	100%	100%	100%
Custom Masonry Cleaner	1:6	100%	100%	100%
Burnished Custom Masonry Cleaner	1:3	100%	100%	100%
“60.11.0 Tierra Brown” CL Standard				
Product	Dilution	3 day	7 day	14 day
Custom Masonry Cleaner	1:2	100%	100%	100%
Custom Masonry Cleaner	1:6	100%	100%	100%
Burnished Custom Masonry Cleaner	1:3	100%	100%	100%
“60.25.0 Fuego Red” CL Standard				
Product	Dilution	3 day	7 day	14 day
Custom Masonry Cleaner	1:2	100%	100%	100%
Custom Masonry Cleaner	1:6	100%	100%	100%
Burnished Custom Masonry Cleaner	1:3	100%	100%	100%
“60.13.0 Cocoa Brown” CL Standard				
Product	Dilution	3 day	7 day	14 day
Custom Masonry Cleaner	1:2	100%	100%	100%
Custom Masonry Cleaner	1:6	100%	100%	100%
Burnished Custom Masonry Cleaner	1:3	100%	100%	100%
“60.26.0 Sedona Red” CL Standard				
Product	Dilution	3 day	7 day	14 day
Custom Masonry Cleaner	1:2	100%	100%	100%
Custom Masonry Cleaner	1:6	100%	100%	100%
Burnished Custom Masonry Cleaner	1:3	100%	100%	100%
“60.12.0 Umber Brown” CL Standard				
Product	Dilution	3 day	7 day	14 day
Custom Masonry Cleaner	1:2	100%	100%	100%
Custom Masonry Cleaner	1:6	100%	100%	100%
Burnished Custom Masonry Cleaner	1:3	100%	100%	100%
“60.15.0 Charcoal” CL Standard				
Product	Dilution	3 day	7 day	14 day
Custom Masonry Cleaner	1:2	100%	100%	100%
Custom Masonry Cleaner	1:6	100%	100%	100%
Burnished Custom Masonry Cleaner	1:3	100%	100%	100%



PALLET TAG PROGRAM LABORATORY REPORT



PROSOCO, Inc.

Page 8

TEST RESULTS – Cleaning Continued

“60.16.0 Peach” Split-face				
Product	Dilution	3 day	7 day	14 day
Custom Masonry Cleaner	1:2	100%	100%	100%
Custom Masonry Cleaner	1:6	100%	100%	100%
Burnished Custom Masonry Cleaner	1:3	100%	100%	100%
“60.20.0 Purple Haze” Split-face				
Product	Dilution	3 day	7 day	14 day
Custom Masonry Cleaner	1:2	100%	100%	100%
Custom Masonry Cleaner	1:6	100%	100%	100%
Burnished Custom Masonry Cleaner	1:3	100%	100%	100%
“60.11.0 Tierra Brown” Split-face				
Product	Dilution	3 day	7 day	14 day
Custom Masonry Cleaner	1:2	100%	100%	100%
Custom Masonry Cleaner	1:6	100%	100%	100%
Burnished Custom Masonry Cleaner	1:3	100%	100%	100%
“60.25.0 Fuego Red” Split-face				
Product	Dilution	3 day	7 day	14 day
Custom Masonry Cleaner	1:2	100%	100%	100%
Custom Masonry Cleaner	1:6	100%	100%	100%
Burnished Custom Masonry Cleaner	1:3	100%	100%	100%
“60.13.0 Cocoa Brown” Split-face				
Product	Dilution	3 day	7 day	14 day
Custom Masonry Cleaner	1:2	100%	100%	100%
Custom Masonry Cleaner	1:6	100%	100%	100%
Burnished Custom Masonry Cleaner	1:3	100%	100%	100%
“60.26.0 Sedona Red” Split-face				
Product	Dilution	3 day	7 day	14 day
Custom Masonry Cleaner	1:2	100%	100%	100%
Custom Masonry Cleaner	1:6	100%	100%	100%
Burnished Custom Masonry Cleaner	1:3	100%	100%	100%
“60.12.0 Umber Brown” Split-face				
Product	Dilution	3 day	7 day	14 day
Custom Masonry Cleaner	1:2	100%	100%	100%
Custom Masonry Cleaner	1:6	100%	100%	100%
Burnished Custom Masonry Cleaner	1:3	100%	100%	100%
“60.15.0 Charcoal” Split-face				
Product	Dilution	3 day	7 day	14 day
Custom Masonry Cleaner	1:2	100%	100%	100%
Custom Masonry Cleaner	1:6	100%	100%	100%
Burnished Custom Masonry Cleaner	1:3	100%	100%	100%



PALLET TAG PROGRAM LABORATORY REPORT



PROSOCO, Inc.

Page 9

TEST RESULTS – Cleaning Continued

“33.36.0 Autumn Blend” Founder				
Product	Dilution	3 day	7 day	14 day
Custom Masonry Cleaner	1:2	100%	100%	100%
Custom Masonry Cleaner	1:6	100%	100%	100%
Burnished Custom Masonry Cleaner	1:3	100%	100%	100%
“33.37.0 Hayden Blend” Founder				
Product	Dilution	3 day	7 day	14 day
Custom Masonry Cleaner	1:2	100%	100%	100%
Custom Masonry Cleaner	1:6	100%	100%	100%
Burnished Custom Masonry Cleaner	1:3	100%	100%	100%
“33.38.0 Canyon Blend” Founder				
Product	Dilution	3 day	7 day	14 day
Custom Masonry Cleaner	1:2	100%	100%	100%
Custom Masonry Cleaner	1:6	100%	100%	100%
Burnished Custom Masonry Cleaner	1:3	100%	100%	100%
“20.01.0 Desert Beige” Slump				
Product	Dilution	3 day	7 day	14 day
Custom Masonry Cleaner	1:2	100%	100%	100%
Custom Masonry Cleaner	1:6	100%	100%	100%
Burnished Custom Masonry Cleaner	1:3	100%	100%	100%
“20.02.0 Spanish Brown” Slump				
Product	Dilution	3 day	7 day	14 day
Custom Masonry Cleaner	1:2	100%	100%	100%
Custom Masonry Cleaner	1:6	100%	100%	100%
Burnished Custom Masonry Cleaner	1:3	100%	100%	100%
“20.03.0 Adobe Buff” Slump				
Product	Dilution	3 day	7 day	14 day
Custom Masonry Cleaner	1:2	100%	100%	100%
Custom Masonry Cleaner	1:6	100%	100%	100%
Burnished Custom Masonry Cleaner	1:3	100%	100%	100%
“50.08.0 Beige” Fence				
Product	Dilution	3 day	7 day	14 day
Custom Masonry Cleaner	1:2	100%	100%	100%
Custom Masonry Cleaner	1:6	100%	100%	100%
Burnished Custom Masonry Cleaner	1:3	100%	100%	100%
“50.09.0 Brown” Fence				
Product	Dilution	3 day	7 day	14 day
Custom Masonry Cleaner	1:2	100%	100%	100%
Custom Masonry Cleaner	1:6	100%	100%	100%
Burnished Custom Masonry Cleaner	1:3	100%	100%	100%



PALLET TAG PROGRAM LABORATORY REPORT



CONCLUSIONS - CLEANING

Based upon the test data, all of the submitted block samples tested were efficiently cleaned with each dilution of the selected PROSOCO Inc.'s cleaning products. Use higher concentrations and surface agitation to maximize aggregate exposure. Use low concentration and surface agitation to minimize aggregate exposure.

All dilutions of Sure Klean[®] Custom Masonry Cleaner and Sure Klean[®] Burnished Custom Masonry Cleaner and tested affected the substrate in a similar manner, removing slight to heavy concentrations of pigmented matrix from the rough and smooth block faces, exposing small and large aggregate, and enhancing the natural appearance of the integrally colored concrete masonry unit.

RECOMMENDED PRODUCTS AND DILUTIONS - CLEANING

Recommendations for cleaning for each type of CMU submitted by Superlite Block, Phoenix, AZ are provided in the chart below. Recommendations are based on the optimum dilution for complete removal of mortar.

Block	New Construction Cleaning (Type S mortar, 14 day)
All Submitted Types of CMU's	<p style="text-align: center;">Sure Klean[®] Custom Masonry Cleaner (1:6) OR Sure Klean[®] Burnished Custom Masonry Cleaner (1:3)</p>

The most appropriate cleaner and dilution should be determined on the specific job-site, and will be dependent primarily on the nature and severity of soiling present at that location. Pressure rinsing equipment providing at least 400 psi at 4-6 gpm delivered through a 15-40 degree fan spray tip often produces best cleaning results.

Apply all products in accordance with the manufacturer's recommendation provided on container labels and product data sheets. On-site testing should be conducted to determine the most appropriate cleaning product and procedures for a particular project. See product literature for additional application and product information.



PALLET TAG PROGRAM LABORATORY REPORT



SECTION B – COLOR UNIFORMITY:

DESCRIPTION OF PRODUCTS EVALUATED – Color Uniformity:

Sure Klean® Custom Masonry Cleaner – A general purpose, concentrated acidic cleaner for most custom masonry and colored concrete. Removes concrete splashes, excess mortar, mud, heavy efflorescence and surface soiling, leaving the masonry clean and uniform with no acid burning or streaking. Liquid concentrate for dilution with 2-6 parts water. Apply by brush or low-pressure spray.

Sure Klean® Burnished Custom Masonry Cleaner - A general-purpose, non-etching acidic cleaner that removes rust, mud, oil, atmospheric dirt, mortar smears and other stains without altering the surface texture. Burnished Custom Masonry Cleaner adds depth to colors, brightens white matrices and exposed aggregate.

TEST METHOD – Color Uniformity Testing:

Dilution ratios refer to mixtures of concentrated cleaner : fresh water.

1. Prewet the surface with water.
2. Apply each cleaner at the appropriate dilutions.
3. Allow appropriate dwell time, as specified.
 - Custom Masonry Cleaner 3 minutes
 - Burnished Custom Masonry Cleaner 5 minutes
4. Reapply the products and moderately agitate with a brush.
5. Pressure rinse thoroughly.*
6. Allow the sample to dry for at least 18 hours and visually examine.
7. Break the sample in half and compare the through-body surfaces to the cleaned surfaces for the best match.

* Pressure rinsing was conducted at approximately 1300 psi with a warm water flow rate of 1.9 gallons per minute.



PALLET TAG PROGRAM LABORATORY REPORT



PROSOCO, Inc.

Page 12

TEST RESULTS – Color Uniformity

Substrate: “CL Standard” CMU		Pigment Color: “60.16.0 Peach”	
Product	Dilution	Aggregate Exposure	Surface Pigment Alteration/Removal
Custom Masonry Cleaner	1:2	4	3
Custom Masonry Cleaner	1:6	3	3
Burnished Custom Masonry Cleaner	1:3	2	4
Substrate: “CL Standard” CMU		Pigment Color: “60.20.0 Purple Haze”	
Product	Dilution	Aggregate Exposure	Surface Pigment Alteration/Removal
Custom Masonry Cleaner	1:2	4	2
Custom Masonry Cleaner	1:6	3	3
Burnished Custom Masonry Cleaner	1:3	2	4
Substrate: “CL Standard” CMU		Pigment Color: “60.11.0 Tierra Brown”	
Product	Dilution	Aggregate Exposure	Surface Pigment Alteration/Removal
Custom Masonry Cleaner	1:2	4	2
Custom Masonry Cleaner	1:6	3	3
Burnished Custom Masonry Cleaner	1:3	2	2
Substrate: “CL Standard” CMU		Pigment Color: “60.25.0 Fuego Red”	
Product	Dilution	Aggregate Exposure	Surface Pigment Alteration/Removal
Custom Masonry Cleaner	1:2	4	2
Custom Masonry Cleaner	1:6	3	4
Burnished Custom Masonry Cleaner	1:3	2	3

Scale used for reporting results of both categories

- | | |
|--|---------------------------------------|
| 0 – Worst match to through-body | 3 – Good match to through-body |
| 1 – Poor match to through-body | 4 – Best match to through-body |
| 2 – Fair match to through-body | |



PALLET TAG PROGRAM LABORATORY REPORT



PROSOCO, Inc.

Page 13

TEST RESULTS – Color Uniformity Continued

Substrate: “CL Standard” CMU		Pigment Color: “60.13.0 Cocoa Brown”	
Product	Dilution	Aggregate Exposure	Surface Pigment Alteration/Removal
Custom Masonry Cleaner	1:2	3	2
Custom Masonry Cleaner	1:6	2	2
Burnished Custom Masonry Cleaner	1:3	2	4
Substrate: “CL Standard” CMU		Pigment Color: “60.26.0 Sedona Red”	
Product	Dilution	Aggregate Exposure	Surface Pigment Alteration/Removal
Custom Masonry Cleaner	1:2	3	3
Custom Masonry Cleaner	1:6	2	3
Burnished Custom Masonry Cleaner	1:3	2	2
Substrate: “CL Standard” CMU		Pigment Color: “60.12.0 Umber Brown”	
Product	Dilution	Aggregate Exposure	Surface Pigment Alteration/Removal
Custom Masonry Cleaner	1:2	2	2
Custom Masonry Cleaner	1:6	3	3
Burnished Custom Masonry Cleaner	1:3	4	3
Substrate: “CL Standard” CMU		Pigment Color: “60.15.0 Charcoal”	
Product	Dilution	Aggregate Exposure	Surface Pigment Alteration/Removal
Custom Masonry Cleaner	1:2	2	2
Custom Masonry Cleaner	1:6	2	2
Burnished Custom Masonry Cleaner	1:3	4	4

Scale used for reporting results of both categories

- | | |
|--|---------------------------------------|
| 0 – Worst match to through-body | 3 – Good match to through-body |
| 1 – Poor match to through-body | 4 – Best match to through-body |
| 2 – Fair match to through-body | |



PALLET TAG PROGRAM LABORATORY REPORT



PROSOCO, Inc.

Page 14

TEST RESULTS – Color Uniformity Continued

Substrate: “Split-face” CMU		Pigment Color: “60.16.0 Peach”	
Product	Dilution	Aggregate Exposure	Surface Pigment Alteration/Removal
Custom Masonry Cleaner	1:2	4	2
Custom Masonry Cleaner	1:6	4	2
Burnished Custom Masonry Cleaner	1:3	2	4
Substrate: “Split-face” CMU		Pigment Color: “60.20.0 Purple Haze”	
Product	Dilution	Aggregate Exposure	Surface Pigment Alteration/Removal
Custom Masonry Cleaner	1:2	3	2
Custom Masonry Cleaner	1:6	3	4
Burnished Custom Masonry Cleaner	1:3	3	3
Substrate: “Split-face” CMU		Pigment Color: “60.11.0 Tierra Brown”	
Product	Dilution	Aggregate Exposure	Surface Pigment Alteration/Removal
Custom Masonry Cleaner	1:2	3	2
Custom Masonry Cleaner	1:6	2	3
Burnished Custom Masonry Cleaner	1:3	2	4
Substrate: “Split-face” CMU		Pigment Color: “60.25.0 Fuego Red”	
Product	Dilution	Aggregate Exposure	Surface Pigment Alteration/Removal
Custom Masonry Cleaner	1:2	4	2
Custom Masonry Cleaner	1:6	3	3
Burnished Custom Masonry Cleaner	1:3	2	4

Scale used for reporting results of both categories

- | | |
|--|---------------------------------------|
| 0 – Worst match to through-body | 3 – Good match to through-body |
| 1 – Poor match to through-body | 4 – Best match to through-body |
| 2 – Fair match to through-body | |



PALLET TAG PROGRAM LABORATORY REPORT



PROSOCO, Inc.

Page 15

TEST RESULTS – Color Uniformity Continued

Substrate: “Split-face” CMU		Pigment Color: “60.13.0 Cocoa Brown”	
Product	Dilution	Aggregate Exposure	Surface Pigment Alteration/Removal
Custom Masonry Cleaner	1:2	3	2
Custom Masonry Cleaner	1:6	2	2
Burnished Custom Masonry Cleaner	1:3	2	4
Substrate: “Split-face” CMU		Pigment Color: “60.26.0 Sedona Red”	
Product	Dilution	Aggregate Exposure	Surface Pigment Alteration/Removal
Custom Masonry Cleaner	1:2	2	2
Custom Masonry Cleaner	1:6	3	3
Burnished Custom Masonry Cleaner	1:3	4	4
Substrate: “Split-face” CMU		Pigment Color: “60.12.0 Umber Brown”	
Product	Dilution	Aggregate Exposure	Surface Pigment Alteration/Removal
Custom Masonry Cleaner	1:2	2	2
Custom Masonry Cleaner	1:6	3	2
Burnished Custom Masonry Cleaner	1:3	3	3
Substrate: “Split-face” CMU		Pigment Color: “60.15.0 Charcoal”	
Product	Dilution	Aggregate Exposure	Surface Pigment Alteration/Removal
Custom Masonry Cleaner	1:2	2	2
Custom Masonry Cleaner	1:6	3	3
Burnished Custom Masonry Cleaner	1:3	4	4

Scale used for reporting results of both categories

- | | |
|--|---------------------------------------|
| 0 – Worst match to through-body | 3 – Good match to through-body |
| 1 – Poor match to through-body | 4 – Best match to through-body |
| 2 – Fair match to through-body | |



PALLET TAG PROGRAM LABORATORY REPORT



PROSOCO, Inc.

Page 16

TEST RESULTS – Color Uniformity Continued

Substrate: “Founders” CMU		Pigment Color: “33.36.0 Autumn Blend”	
Product	Dilution	Aggregate Exposure	Surface Pigment Alteration/Removal
Custom Masonry Cleaner	1:2	2	3
Custom Masonry Cleaner	1:6	4	4
Burnished Custom Masonry Cleaner	1:3	3	2
Substrate: “Founders” CMU		Pigment Color: “33.37.0 Hayden Blend”	
Product	Dilution	Aggregate Exposure	Surface Pigment Alteration/Removal
Custom Masonry Cleaner	1:2	2	3
Custom Masonry Cleaner	1:6	4	4
Burnished Custom Masonry Cleaner	1:3	3	2
Substrate: “Founders” CMU		Pigment Color: “33.38.0 Canyon Blend”	
Product	Dilution	Aggregate Exposure	Surface Pigment Alteration/Removal
Custom Masonry Cleaner	1:2	2	3
Custom Masonry Cleaner	1:6	3	3
Burnished Custom Masonry Cleaner	1:3	3	2
Substrate: “Slump” CMU		Pigment Color: “20.01.0 Desert Beige”	
Product	Dilution	Aggregate Exposure	Surface Pigment Alteration/Removal
Custom Masonry Cleaner	1:2	3	2
Custom Masonry Cleaner	1:6	3	3
Burnished Custom Masonry Cleaner	1:3	2	3

Scale used for reporting results of both categories

- | | |
|--|---------------------------------------|
| 0 – Worst match to through-body | 3 – Good match to through-body |
| 1 – Poor match to through-body | 4 – Best match to through-body |
| 2 – Fair match to through-body | |



PALLET TAG PROGRAM LABORATORY REPORT



PROSOCO, Inc.

Page 17

TEST RESULTS – Color Uniformity Continued

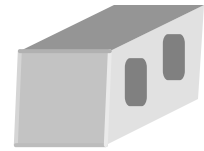
Substrate: “Slump” CMU		Pigment Color: “20.02.0 Spanish Brown”	
Product	Dilution	Aggregate Exposure	Surface Pigment Alteration/Removal
Custom Masonry Cleaner	1:2	3	3
Custom Masonry Cleaner	1:6	2	3
Burnished Custom Masonry Cleaner	1:3	2	2
Substrate: “Slump” CMU		Pigment Color: “20.03.0 Adobe Buff”	
Product	Dilution	Aggregate Exposure	Surface Pigment Alteration/Removal
Custom Masonry Cleaner	1:2	3	2
Custom Masonry Cleaner	1:6	2	4
Burnished Custom Masonry Cleaner	1:3	2	2
Substrate: “Fence” CMU		Pigment Color: “50.08.0 Beige”	
Product	Dilution	Aggregate Exposure	Surface Pigment Alteration/Removal
Custom Masonry Cleaner	1:2	3	2
Custom Masonry Cleaner	1:6	2	4
Burnished Custom Masonry Cleaner	1:3	2	3
Substrate: “Fence” CMU		Pigment Color: “50.09.0 Brown”	
Product	Dilution	Aggregate Exposure	Surface Pigment Alteration/Removal
Custom Masonry Cleaner	1:2	4	2
Custom Masonry Cleaner	1:6	3	2
Burnished Custom Masonry Cleaner	1:3	2	4

Scale used for reporting results of both categories

- | | |
|--|---------------------------------------|
| 0 – Worst match to through-body | 3 – Good match to through-body |
| 1 – Poor match to through-body | 4 – Best match to through-body |
| 2 – Fair match to through-body | |



PALLET TAG PROGRAM LABORATORY REPORT

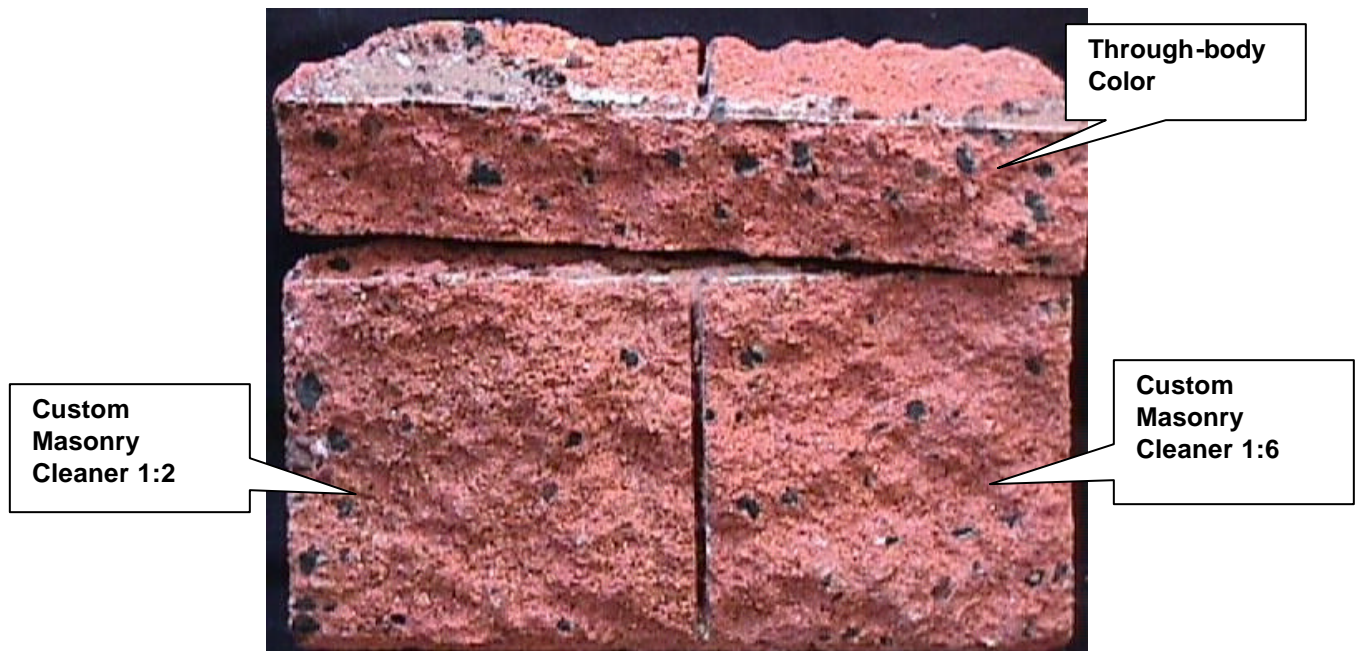


PROSOCO, Inc.

Page 18

PHOTOGRAPHS – Color Uniformity

“60.25.0 Fuego Red” Split-face CMU after cleaning





PALLET TAG PROGRAM LABORATORY REPORT



CONCLUSIONS - COLOR UNIFORMITY:

All dilutions of Sure Klean[®] Custom Masonry Cleaner and Sure Klean[®] Burnished Custom Masonry Cleaner tested affected the substrate in a similar manner. Higher concentrations of cleaner removed moderate to heavy concentrations of pigmented matrix, exposing small and large aggregate. Lower concentrations of cleaner removed slight to moderate concentrations of pigmented matrix, exposing small and large aggregate. All dilutions enhanced the natural appearance of the integrally colored CMU.

RECOMMENDATIONS - COLOR UNIFORMITY

Recommendations for color uniformity for each type of CMU submitted by Superlite Block, Phoenix, AZ are provided in the chart below. Recommendations are based on the optimum dilution that provides the best color uniformity and the complete removal of mortar.

Block	Color Uniformity
All Submitted Types of CMU's	<p style="text-align: center;">Sure Klean[®] Custom Masonry Cleaner (1:6) OR Sure Klean[®] Burnished Custom Masonry Cleaner (1:3)</p>

The most appropriate cleaner and dilution should be determined on the specific job-site, and will be dependent primarily on the nature and severity of soiling present at that location. Pressure rinsing equipment providing at least 400 psi at 4-6 gpm delivered through a 15-40 degree fan spray tip often produces best cleaning results.

Apply all products in accordance with the manufacturer's recommendation provided on container labels and product data sheets. On-site testing should be conducted to determine the most appropriate cleaning product and procedures for a particular project. See product literature for additional application and product information.



PALLET TAG PROGRAM LABORATORY REPORT



PROSOCO, Inc.

Page 20

SECTION C - PROTECTIVE WATER REPELLENTS:

The testing described below evaluates the suitability of water repellent treatments.

The surface treatments evaluated were selected for their suitability for application based on the following selection criteria:

1. Weatherproofing properties
2. Color change
3. Ease of application

DESCRIPTIONS OF PRODUCTS EVALUATED - Protective Water Repellents:

Sure Klean® Custom Masonry Sealer - A clear, solvent-based silicone elastomer formulated to weatherproof custom masonry units, cast stone, architectural concrete block, precast concrete, wood and porous masonry. Custom Masonry Sealer penetrates and fills pores to prevent water penetration through exterior walls exposed to normal weathering.

Sure Klean® Weather Seal Siloxane WB Concentrate – A self-emulsifying water repellent concentrate designed for dilution with fresh water at the jobsite. This solvent-free blend of silanes and oligomeric alkoxy siloxanes mixes easily with water to produce a penetrating water repellent ideal for application to dense or porous masonry surfaces.

SAMPLE PREPARATION - Protective Water Repellents:

The submitted blocks were scored, allowed to dry, and to reabsorb atmospheric humidity for 24 hours prior to treatment. The treatment method consisted of a wet-on-wet brush application. All treatments were allowed to cure at least 3 days prior to testing.

TEST METHODS - Protective Water Repellents:

Water Absorption Tube Test: RILEM II.4, 60 mph, 20 Minutes

The water absorption tube test simulating wind driven rain conditions was performed. This test simulates 60 mile per hour wind driven rain conditions for a period of 20 minutes. See Technical Services TECH Note RILEM Tube Test Procedures.



PALLET TAG PROGRAM LABORATORY REPORT



PROSOCO, Inc.

Page 21

TEST RESULTS - Protective Water Repellents

Water Absorption Tube Test: RILEM II.4, 60 mph, 20 Minutes

	RESULTS
“60.16.0 Peach” CL Standard	
Untreated Control	50 mph
Custom Masonry Sealer	56 mph
Siloxane WB Concentrate (1:9)	60 mph
Siloxane WB Concentrate (1:14)	59 mph
“60.20.0 Purple Haze” CL Standard	
Untreated Control	< 40 mph
Custom Masonry Sealer	60 mph
Siloxane WB Concentrate (1:9)	60 mph
Siloxane WB Concentrate (1:14)	60 mph
“60.11.0 Tierra Brown” CL Standard	
Untreated Control	< 40 mph
Custom Masonry Sealer	60 mph
Siloxane WB Concentrate (1:9)	60 mph
Siloxane WB Concentrate (1:14)	60 mph
“60.25.0 Fuego Red” CL Standard	
Untreated Control	< 40 mph
Custom Masonry Sealer	60 mph
Siloxane WB Concentrate (1:9)	59 mph
Siloxane WB Concentrate (1:14)	58 mph



PALLET TAG PROGRAM LABORATORY REPORT



PROSOCO, Inc.

Page 22

TEST RESULTS - Protective Water Repellents Continued

Water Absorption Tube Test: RILEM II.4, 60 mph, 20 Minutes

	RESULTS
“60.13.0 Cocoa Brown” CL Standard	
Untreated Control	<40 mph
Custom Masonry Sealer	56 mph
Siloxane WB Concentrate (1:9)	59 mph
Siloxane WB Concentrate (1:14)	59 mph
“60.26.0 Sedona Red” CL Standard	
Untreated Control	< 40 mph
Custom Masonry Sealer	56 mph
Siloxane WB Concentrate (1:9)	60 mph
Siloxane WB Concentrate (1:14)	60 mph
“60.12.0 Umber Brown” CL Standard	
Untreated Control	< 40 mph
Custom Masonry Sealer	56 mph
Siloxane WB Concentrate (1:9)	59 mph
Siloxane WB Concentrate (1:14)	58 mph
“60.15.0 Charcoal” CL Standard	
Untreated Control	< 40 mph
Custom Masonry Sealer	58 mph
Siloxane WB Concentrate (1:9)	60 mph
Siloxane WB Concentrate (1:14)	60 mph



PALLET TAG PROGRAM LABORATORY REPORT



PROSOCO, Inc.

Page 23

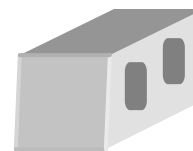
TEST RESULTS - Protective Water Repellents Continued

Water Absorption Tube Test: RILEM II.4, 60 mph, 20 Minutes

RESULTS	
“60.16.0 Peach” Split-face	
Untreated Control	<40 mph
Custom Masonry Sealer	60 mph
Siloxane WB Concentrate (1:9)	60 mph
Siloxane WB Concentrate (1:14)	60 mph
“60.20.0 Purple Haze” Split-face	
Untreated Control	< 40 mph
Custom Masonry Sealer	57 mph
Siloxane WB Concentrate (1:9)	59 mph
Siloxane WB Concentrate (1:14)	56 mph
“60.11.0 Tierra Brown” Split-face	
Untreated Control	< 40 mph
Custom Masonry Sealer	60 mph
Siloxane WB Concentrate (1:9)	60 mph
Siloxane WB Concentrate (1:14)	60 mph
“60.25.0 Fuego Red” Split-face	
Untreated Control	< 40 mph
Custom Masonry Sealer	59 mph
Siloxane WB Concentrate (1:9)	60 mph
Siloxane WB Concentrate (1:14)	58 mph



PALLET TAG PROGRAM LABORATORY REPORT



PROSOCO, Inc.

Page 24

TEST RESULTS - Protective Water Repellents Continued

Water Absorption Tube Test: RILEM II.4, 60 mph, 20 Minutes

	RESULTS
“60.13.0 Cocoa Brown” Split-face	
Untreated Control	<40 mph
Custom Masonry Sealer	60 mph
Siloxane WB Concentrate (1:9)	60 mph
Siloxane WB Concentrate (1:14)	60 mph
“60.26.0 Sedona Red” Split-face	
Untreated Control	< 40 mph
Custom Masonry Sealer	59 mph
Siloxane WB Concentrate (1:9)	59 mph
Siloxane WB Concentrate (1:14)	57 mph
“60.12.0 Umber Brown” Split-face	
Untreated Control	< 40 mph
Custom Masonry Sealer	60 mph
Siloxane WB Concentrate (1:9)	60 mph
Siloxane WB Concentrate (1:14)	59 mph
“60.15.0 Charcoal” Split-face	
Untreated Control	< 40 mph
Custom Masonry Sealer	60 mph
Siloxane WB Concentrate (1:9)	59 mph
Siloxane WB Concentrate (1:14)	56 mph



PALLET TAG PROGRAM LABORATORY REPORT



PROSOCO, Inc.

Page 25

TEST RESULTS - Protective Water Repellents Continued

Water Absorption Tube Test: RILEM II.4, 60 mph, 20 Minutes

	RESULTS
“33.36.0 Autumn Blend” Founders	
Untreated Control	50 mph
Custom Masonry Sealer	60 mph
Siloxane WB Concentrate (1:9)	58 mph
Siloxane WB Concentrate (1:14)	55 mph
“33.37.0 Hayden Blend” Founders	
Untreated Control	< 40 mph
Custom Masonry Sealer	59 mph
Siloxane WB Concentrate (1:9)	59 mph
Siloxane WB Concentrate (1:14)	59 mph
“33.38.0 Canyon Blend” Founders	
Untreated Control	< 40 mph
Custom Masonry Sealer	59 mph
Siloxane WB Concentrate (1:9)	60 mph
Siloxane WB Concentrate (1:14)	60 mph
“20.01.0 Desert Beige” Slump	
Untreated Control	50 mph
Custom Masonry Sealer	56 mph
Siloxane WB Concentrate (1:9)	60 mph
Siloxane WB Concentrate (1:14)	59 mph



PALLET TAG PROGRAM LABORATORY REPORT



PROSOCO, Inc.

Page 26

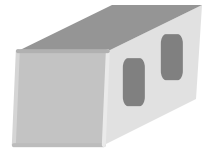
TEST RESULTS - Protective Water Repellents Continued

Water Absorption Tube Test: RILEM II.4, 60 mph, 20 Minutes

	RESULTS
“20.02.0 Spanish Brown” Slump	
Untreated Control	49 mph
Custom Masonry Sealer	60 mph
Siloxane WB Concentrate (1:9)	58 mph
Siloxane WB Concentrate (1:14)	56 mph
“20.03.0 Adobe Buff” Slump	
Untreated Control	49 mph
Custom Masonry Sealer	59 mph
Siloxane WB Concentrate (1:9)	57 mph
Siloxane WB Concentrate (1:14)	55 mph
“50.08.0 Beige” Fence	
Untreated Control	<40 mph
Custom Masonry Sealer	52 mph
Siloxane WB Concentrate (1:9)	60 mph
Siloxane WB Concentrate (1:14)	58 mph
“50.09.0 Brown” Fence	
Untreated Control	<40 mph
Custom Masonry Sealer	42 mph
Siloxane WB Concentrate (1:9)	50 mph
Siloxane WB Concentrate (1:14)	58 mph



PALLET TAG PROGRAM LABORATORY REPORT

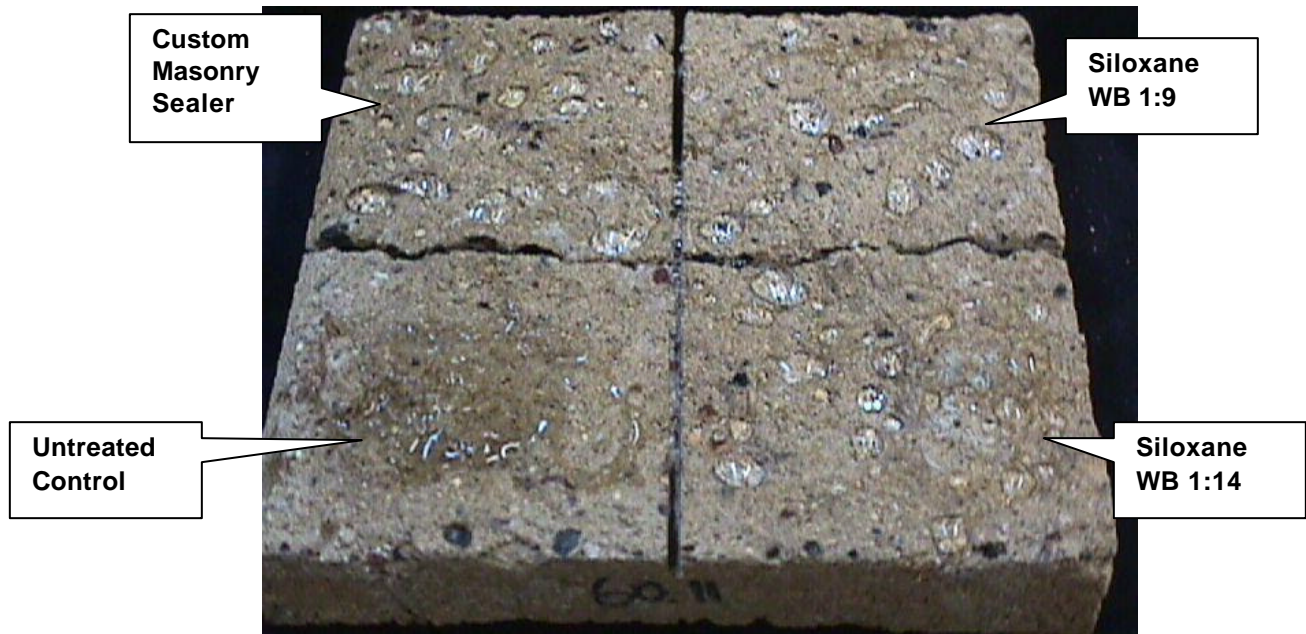


PROSOCO, Inc.

Page 27

PHOTOGRAPHS – Protective Water Repellents

“60.11.0 Tierra Brown” Split-face CMU after water repellency treatment





PALLET TAG PROGRAM LABORATORY REPORT



PROSOCO, Inc.

Page 28

CONCLUSIONS - Protective Water Repellents

Based upon laboratory evaluations, either Sure Klean[®] Custom Masonry Sealer or Sure Klean[®] Weather Seal Siloxane WB Concentrate diluted with nine parts fresh water or fourteen parts fresh water provided excellent water repellency to all of the submitted samples. Sure Klean[®] Custom Masonry Sealer slightly enhanced the natural color of the CMU's.

RECOMMENDATIONS - PROTECTIVE WATER REPELLENTS

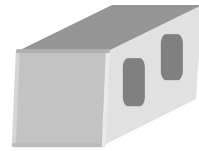
Recommendations for water repellency treatment for each type of CMU submitted by Superlite Block, Phoenix, AZ are provided in the chart below. Recommendations are based on the treatment that proved most effective and can provide water repellency on all types submitted.

Block	Water Repellents
All "CL Standard", "Split-face", Founders", and "Slump" CMU's submitted	Sure Klean [®] Custom Masonry Sealer OR Sure Klean [®] Weather Seal Siloxane WB 1:9 or 1:14
All "Fence" CMU's submitted	Sure Klean [®] Weather Seal Siloxane WB 1:9 or 1:14

Apply all products in accordance with the manufacturer's recommendation provided on container labels and product data sheets. On-site testing should be conducted to determine the most appropriate water repellent product and procedures for a particular project. See product literature for additional application and product information.



PALLET TAG PROGRAM LABORATORY REPORT



PROSOCO, Inc.

Page 29

SECTION D – GRAFFITI CONTROL

DESCRIPTION OF PRODUCTS EVALUATED

These trials were conducted to determine the optimal graffiti control treatment.

Graffiti Control Treatments

Sure Klean[®] Custom Masonry Sealer – A clear, solvent-based silicone elastomer formulated to weatherproof custom masonry units, cast stone, architectural concrete block, precast concrete, wood, and porous masonry. Penetrates and fills pores to prevent water penetration through exterior walls exposed to normal weathering. Resists penetration of many types of graffiti.

Products Evaluated for Graffiti Removal

Defacer Eraser[®] Graffiti Wipe- An easy-to-use graffiti remover that does not contain methanol, methylene chloride or other “halogenated” solvents prohibited on many projects. Graffiti Wipe removes a variety of graffiti stains from most smooth masonry, wood, and metal surfaces.

Sure Klean[®] Fast Acting Stripper- A thixotropic stripping compound designed for removing coatings and epoxies from masonry, wood, and metal surfaces. It also removes oil, grease, and waxes from concrete decks, tile, and terrazzo floors.

Graffiti Agents

Interior/Exterior Spray Paint (Red)
Permanent Marker (Green)
Permanent Marker (Red)
Permanent Marker (Black)



PALLET TAG PROGRAM LABORATORY REPORT



PROSOCO, Inc.

Page 30

SAMPLE PREPARATION – Graffiti Control

This evaluation compares the effectiveness in preventing staining of enamel spray paint and permanent markers.

Sections of the concrete samples were treated with Sure Klean[®] Custom Masonry Sealer in accordance with PROSOCO, Inc.'s Product Guide application recommendations and then allowed to cure for a 24 hour period. At the end of the period, a visual adverse effects evaluation was made and the graffiti agents were applied to the substrates.

Spray paint and markers were applied as graffiti agents to all treated surfaces at least 24 hours following application of Sure Klean[®] Custom Masonry Sealer. Removal of graffiti agents was attempted 24 hours after the application of the graffiti agents with Defacer Eraser[®] Graffiti Wipe and Sure Klean[®] Fast Acting Stripper.

TEST METHOD – Graffiti Control

Chemical cleaners were evaluated using the following procedure:

1. Apply the product to a dry surface that has been soiled with graffiti.
2. Allow appropriate dwell time:

Fast Acting Stripper	20 minutes
Graffiti Wipe	5 minutes
3. Pressure rinse thoroughly until water runs clear. *
4. Allow the surface to dry thoroughly and visually examine to determine effectiveness.

* Pressure rinsing was conducted at approximately 1300 psi with a warm water flow rate of 1.9 gallons per minute.



PALLET TAG PROGRAM LABORATORY REPORT



PROSOCO, Inc.

Page 31

TEST RESULTS – Graffiti Control

“60.16.0 Peach” CL Standard CMU					
Untreated Control	Red Paint	Black Marker	Green Marker	Red Marker	% Avg. Removal
Fast Acting Stripper	80%	40%	40%	40%	50%
Graffiti Wipe	70%	20%	40%	40%	43%
Custom Masonry Sealer	Red Paint	Black Marker	Green Marker	Red Marker	% Avg. Removal
Fast Acting Stripper	90%	75%	80%	85%	83%
Graffiti Wipe	90%	75%	80%	80%	81%
“60.20.0 Purple Haze” CL Standard CMU					
Untreated Control	Red Paint	Black Marker	Green Marker	Red Marker	% Avg. Removal
Fast Acting Stripper	70%	70%	70%	70%	70%
Graffiti Wipe	90%	60%	60%	60%	68%
Custom Masonry Sealer	Red Paint	Black Marker	Green Marker	Red Marker	% Avg. Removal
Fast Acting Stripper	80%	70%	70%	75%	74%
Graffiti Wipe	95%	70%	70%	85%	80%
“60.11.0 Tierra Brown” CL Standard CMU					
Untreated Control	Red Paint	Black Marker	Green Marker	Red Marker	% Avg. Removal
Fast Acting Stripper	90%	95%	80%	80%	86%
Graffiti Wipe	90%	75%	80%	80%	86%
Custom Masonry Sealer	Red Paint	Black Marker	Green Marker	Red Marker	% Avg. Removal
Fast Acting Stripper	90%	95%	85%	95%	91%
Graffiti Wipe	90%	75%	75%	80%	80%



PALLET TAG PROGRAM LABORATORY REPORT



PROSOCO, Inc.

Page 32

TEST RESULTS – Graffiti Control (cont.)

“60.25.0 Fuego Red” CL Standard CMU					
Untreated Control	Red Paint	Black Marker	Green Marker	Red Marker	% Avg. Removal
Fast Acting Stripper	90%	85%	80%	80%	84%
Graffiti Wipe	90%	50%	50%	50%	60%
Custom Masonry Sealer	Red Paint	Black Marker	Green Marker	Red Marker	% Avg. Removal
Fast Acting Stripper	90%	90%	90%	95%	91%
Graffiti Wipe	90%	60%	60%	80%	73%
“60.13.0 Cocoa Brown” CL Standard CMU					
Untreated Control	Red Paint	Black Marker	Green Marker	Red Marker	% Avg. Removal
Fast Acting Stripper	60%	80%	70%	60%	68%
Graffiti Wipe	70%	60%	60%	60%	63%
Custom Masonry Sealer	Red Paint	Black Marker	Green Marker	Red Marker	% Avg. Removal
Fast Acting Stripper	70%	90%	70%	80%	78%
Graffiti Wipe	50%	70%	70%	70%	65%
“60.26.0 Sedona Red” CL Standard CMU					
Untreated Control	Red Paint	Black Marker	Green Marker	Red Marker	% Avg. Removal
Fast Acting Stripper	60%	70%	60%	60%	63%
Graffiti Wipe	60%	60%	60%	50%	58%
Custom Masonry Sealer	Red Paint	Black Marker	Green Marker	Red Marker	% Avg. Removal
Fast Acting Stripper	90%	85%	80%	90%	86%
Graffiti Wipe	90%	85%	70%	85%	83%
“60.12.0 Umber Brown” CL Standard CMU					
Untreated Control	Red Paint	Black Marker	Green Marker	Red Marker	% Avg. Removal
Fast Acting Stripper	60%	70%	70%	70%	68%
Graffiti Wipe	90%	65%	70%	70%	74%
Custom Masonry Sealer	Red Paint	Black Marker	Green Marker	Red Marker	% Avg. Removal
Fast Acting Stripper	70%	80%	80%	80%	78%
Graffiti Wipe	80%	70%	75%	85%	78%



PALLET TAG PROGRAM LABORATORY REPORT



PROSOCO, Inc.

Page 33

TEST RESULTS – Graffiti Control (cont.)					
“60.15.0 Charcoal” CL Standard CMU					
Untreated Control	Red Paint	Black Marker	Green Marker	Red Marker	% Avg. Removal
Fast Acting Stripper	80%	70%	70%	70%	73%
Graffiti Wipe	80%	70%	70%	70%	73%
Custom Masonry Sealer	Red Paint	Black Marker	Green Marker	Red Marker	% Avg. Removal
Fast Acting Stripper	80%	85%	80%	85%	83%
Graffiti Wipe	85%	75%	80%	75%	83%
“60.16.0 Peach” Split-face CMU					
Untreated Control	Red Paint	Black Marker	Green Marker	Red Marker	% Avg. Removal
Fast Acting Stripper	60%	60%	60%	60%	60%
Graffiti Wipe	60%	60%	60%	60%	60%
Custom Masonry Sealer	Red Paint	Black Marker	Green Marker	Red Marker	% Avg. Removal
Fast Acting Stripper	80%	80%	80%	80%	80%
Graffiti Wipe	60%	70%	80%	70%	70%
“60.20.0 Purple Haze” Split-face CMU					
Untreated Control	Red Paint	Black Marker	Green Marker	Red Marker	% Avg. Removal
Fast Acting Stripper	60%	85%	80%	85%	78%
Graffiti Wipe	60%	60%	60%	60%	60%
Custom Masonry Sealer	Red Paint	Black Marker	Green Marker	Red Marker	% Avg. Removal
Fast Acting Stripper	75%	90%	90%	90%	86%
Graffiti Wipe	75%	80%	75%	80%	78%
“60.11.0 Tierra Brown” Split-face CMU					
Untreated Control	Red Paint	Black Marker	Green Marker	Red Marker	% Avg. Removal
Fast Acting Stripper	70%	85%	75%	75%	76%
Graffiti Wipe	70%	55%	60%	60%	61%
Custom Masonry Sealer	Red Paint	Black Marker	Green Marker	Red Marker	% Avg. Removal
Fast Acting Stripper	80%	95%	85%	80%	85%
Graffiti Wipe	85%	65%	70%	80%	75%



PALLET TAG PROGRAM LABORATORY REPORT



PROSOCO, Inc.

Page 34

TEST RESULTS – Graffiti Control (cont.)					
“60.25.0 Fuego Red” Split-face CMU					
Untreated Control	Red Paint	Black Marker	Green Marker	Red Marker	% Avg. Removal
Fast Acting Stripper	60%	70%	70%	70%	68%
Graffiti Wipe	60%	60%	50%	50%	55%
Custom Masonry Sealer	Red Paint	Black Marker	Green Marker	Red Marker	% Avg. Removal
Fast Acting Stripper	80%	80%	80%	80%	80%
Graffiti Wipe	70%	80%	70%	80%	75%
“60.13.0 Cocoa Brown” Split-face CMU					
Untreated Control	Red Paint	Black Marker	Green Marker	Red Marker	% Avg. Removal
Fast Acting Stripper	50%	70%	80%	60%	65%
Graffiti Wipe	70%	60%	60%	50%	60%
Custom Masonry Sealer	Red Paint	Black Marker	Green Marker	Red Marker	% Avg. Removal
Fast Acting Stripper	80%	80%	80%	80%	80%
Graffiti Wipe	70%	70%	70%	60%	68%
“60.26.0 Sedona Red” Split-face CMU					
Untreated Control	Red Paint	Black Marker	Green Marker	Red Marker	% Avg. Removal
Fast Acting Stripper	60%	80%	70%	60%	68%
Graffiti Wipe	60%	60%	50%	60%	58%
Custom Masonry Sealer	Red Paint	Black Marker	Green Marker	Red Marker	% Avg. Removal
Fast Acting Stripper	85%	90%	80%	90%	86%
Graffiti Wipe	75%	70%	70%	70%	71%
“60.12.0 Umber Brown” Split-face CMU					
Untreated Control	Red Paint	Black Marker	Green Marker	Red Marker	% Avg. Removal
Fast Acting Stripper	50%	90%	75%	75%	73%
Graffiti Wipe	50%	70%	70%	60%	63%
Custom Masonry Sealer	Red Paint	Black Marker	Green Marker	Red Marker	% Avg. Removal
Fast Acting Stripper	80%	85%	85%	85%	84%
Graffiti Wipe	70%	80%	80%	85%	79%



PALLET TAG PROGRAM LABORATORY REPORT



PROSOCO, Inc.

Page 35

TEST RESULTS – Graffiti Control (cont.)					
“60.15.0 Charcoal” Split-face CMU					
Untreated Control	Red Paint	Black Marker	Green Marker	Red Marker	% Avg. Removal
Fast Acting Stripper	60%	80%	40%	70%	63%
Graffiti Wipe	60%	60%	50%	40%	53%
Custom Masonry Sealer	Red Paint	Black Marker	Green Marker	Red Marker	% Avg. Removal
Fast Acting Stripper	70%	80%	60%	80%	73%
Graffiti Wipe	80%	60%	60%	60%	65%
“33.36.0 Autumn Blend” Founder CMU					
Untreated Control	Red Paint	Black Marker	Green Marker	Red Marker	% Avg. Removal
Fast Acting Stripper	70%	60%	60%	60%	63%
Graffiti Wipe	60%	50%	50%	60%	55%
Custom Masonry Sealer	Red Paint	Black Marker	Green Marker	Red Marker	% Avg. Removal
Fast Acting Stripper	80%	90%	90%	95%	89%
Graffiti Wipe	80%	70%	80%	90%	80%
“33.37.0 Hayden Blend” Founder CMU					
Untreated Control	Red Paint	Black Marker	Green Marker	Red Marker	% Avg. Removal
Fast Acting Stripper	60%	70%	60%	60%	63%
Graffiti Wipe	50%	70%	70%	50%	60%
Custom Masonry Sealer	Red Paint	Black Marker	Green Marker	Red Marker	% Avg. Removal
Fast Acting Stripper	80%	80%	80%	75%	79%
Graffiti Wipe	70%	70%	65%	65%	68%
“33.38.0 Canyon Blend” Founder CMU					
Untreated Control	Red Paint	Black Marker	Green Marker	Red Marker	% Avg. Removal
Fast Acting Stripper	70%	80%	60%	60%	68%
Graffiti Wipe	70%	60%	60%	60%	63%
Custom Masonry Sealer	Red Paint	Black Marker	Green Marker	Red Marker	% Avg. Removal
Fast Acting Stripper	90%	90%	80%	90%	88%
Graffiti Wipe	80%	80%	75%	80%	79%



PALLET TAG PROGRAM LABORATORY REPORT



PROSOCO, Inc.

Page 36

TEST RESULTS – Graffiti Control (cont.)					
“20.01.0 Desert Beige” Slump CMU					
Untreated Control	Red Paint	Black Marker	Green Marker	Red Marker	% Avg. Removal
Fast Acting Stripper	60%	60%	50%	50%	55%
Graffiti Wipe	30%	30%	20%	40%	30%
Custom Masonry Sealer	Red Paint	Black Marker	Green Marker	Red Marker	% Avg. Removal
Fast Acting Stripper	70%	60%	70%	80%	70%
Graffiti Wipe	70%	70%	70%	80%	73%
“20.02.0 Spanish Brown” Slump CMU					
Untreated Control	Red Paint	Black Marker	Green Marker	Red Marker	% Avg. Removal
Fast Acting Stripper	80%	80%	60%	80%	75%
Graffiti Wipe	60%	60%	60%	70%	63%
Custom Masonry Sealer	Red Paint	Black Marker	Green Marker	Red Marker	% Avg. Removal
Fast Acting Stripper	90%	80%	80%	90%	85%
Graffiti Wipe	80%	80%	85%	90%	84%
“20.03.0 Adobe Buff” Slump CMU					
Untreated Control	Red Paint	Black Marker	Green Marker	Red Marker	% Avg. Removal
Fast Acting Stripper	60%	70%	60%	70%	65%
Graffiti Wipe	80%	60%	60%	50%	63%
Custom Masonry Sealer	Red Paint	Black Marker	Green Marker	Red Marker	% Avg. Removal
Fast Acting Stripper	80%	80%	90%	100%	88%
Graffiti Wipe	80%	80%	80%	85%	81%
“50.08.0 Beige” Fence CMU					
Untreated Control	Red Paint	Black Marker	Green Marker	Red Marker	% Avg. Removal
Fast Acting Stripper	80%	60%	60%	60%	65%
Graffiti Wipe	60%	60%	60%	60%	60%
Custom Masonry Sealer	Red Paint	Black Marker	Green Marker	Red Marker	% Avg. Removal
Fast Acting Stripper	80%	70%	75%	80%	76%
Graffiti Wipe	90%	80%	80%	80%	83%



PALLET TAG PROGRAM LABORATORY REPORT



PROSOCO, Inc.

Page 37

TEST RESULTS – Graffiti Control (cont.)

“50.09.0 Brown” Fence CMU

Untreated Control	Red Paint	Black Marker	Green Marker	Red Marker	% Avg. Removal
Fast Acting Stripper	80%	60%	60%	60%	65%
Graffiti Wipe	60%	60%	60%	60%	60%
Custom Masonry Sealer	Red Paint	Black Marker	Green Marker	Red Marker	% Avg. Removal
Fast Acting Stripper	80%	80%	60%	90%	78%
Graffiti Wipe	90%	80%	60%	80%	78%



PALLET TAG PROGRAM LABORATORY REPORT

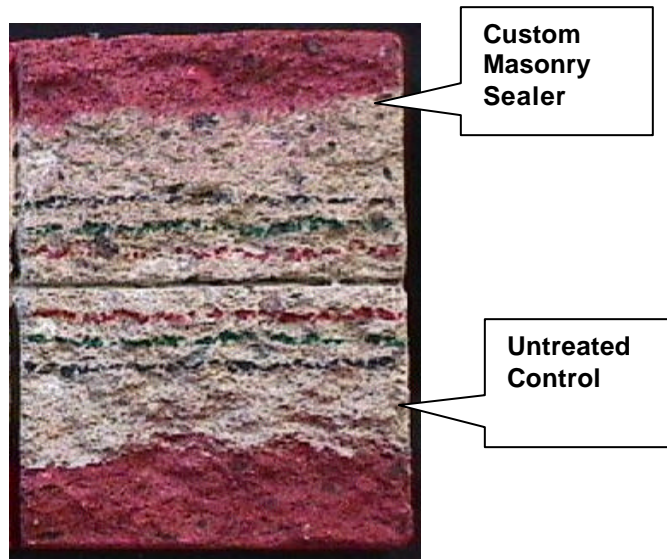


PROSOCO, Inc.

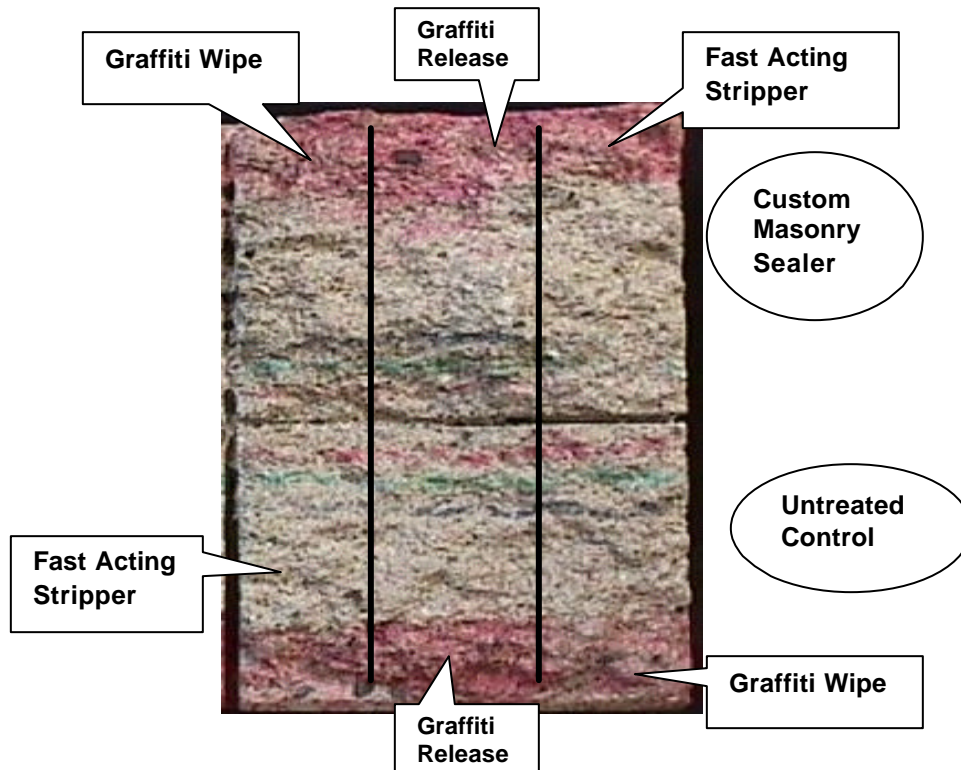
Page 38

PHOTOGRAPHS – Graffiti Control

“60.20.0 Purple Haze” Split-face CMU Before Graffiti Removal



“60.20.0 Purple Haze” Split-face CMU After Graffiti Removal





PALLET TAG PROGRAM LABORATORY REPORT



PROSOCO, Inc.

Page 39

CONCLUSIONS – Graffiti Control

Based upon laboratory evaluations, Sure Klean[®] Fast Acting Stripper and Defacer Eraser[®] Graffiti Wipe were most effective at removing graffiti from the submitted samples. Graffiti removal was improved when the submitted samples were treated with Sure Klean[®] Custom Masonry Sealer prior to graffiti application.

RECOMMENDATIONS – GRAFFITI CONTROL

Recommendations for graffiti control treatment for each type of CMU submitted by Superlite Block, Phoenix, AZ are provided in the chart below. Recommendations are based on the treatment that proved most effective for providing graffiti repellency and the product that was most effective at removing the graffiti on all types submitted.

CMU Type	Graffiti Repellents	Graffiti Removers
All submitted CMU's	Sure Klean [®] Custom Masonry Sealer	Sure Klean [®] Fast Acting Stripper OR Defacer Eraser [®] Graffiti Wipe

Apply all products in accordance with the manufacturer's recommendation provided on container labels and product data sheets. On-site testing should be conducted to determine the most appropriate graffiti control product and procedure for a particular project. See product literature for additional application and product information.

Courtney A. Williams
Project Testing Coordinator

CAW/