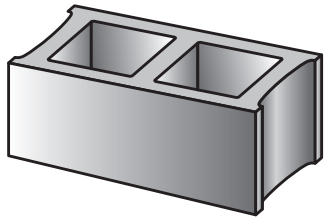


JOB NAME _____
CUSTOMER _____
UNIT DESC/WEIGHT _____
COLOR CODE _____ RUN DATE _____
DRY BLOCK

ATTENTION!



These blocks are made with natural aggregates and are sold as is. They have passed inspection and meet the specifications required. Usage of this product constitutes acceptance. If you have any questions regarding this product, please contact the manufacturer immediately.

Some color variation between blocks is normal and any variation should be distributed evenly through the wall when laying block.

WARNING

DO NOT CLEAN BLOCK WITH MURIATIC ACID!
Use a cleaner and weatherproofer made specifically for this block
and follow the manufacturer's recommendations!

Clean these blocks with:

➤ **SURE-KLEAN** ➤

CUSTOM MASONRY CLEANER

For best overall appearance and color uniformity

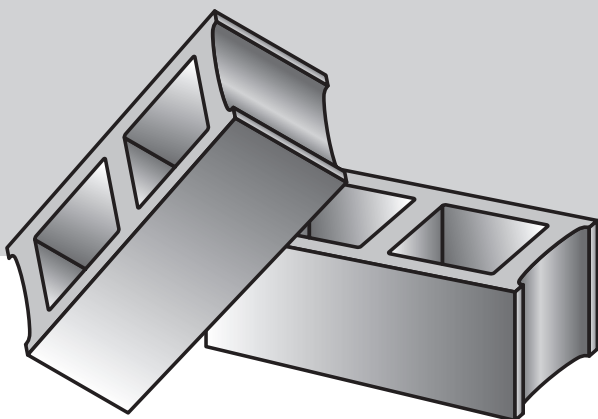
Weatherproof these blocks with:

➤ **SURE-KLEAN** ➤

CUSTOM MASONRY SEALER

For best weather resistance

— by **PROSOCO**
SINCE 1939



Custom Masonry Cleaner should be applied with a pump up sprayer not to exceed 50psi.
Pressure rinse with 500 to 1000 psi at a water flow rate of 4 to 8 gallons per minute and a 20° to 40° fan spray tip.
Reduce water pressure to avoid damage to delicate masonry.

PORTSMOUTH BLOCK, INC.

2700 Gallia ST.
Portsmouth, OH 45662
(740) 353-4113

Manufacturer's recommendations

post-construction cleandown | weatherproofing

WARNING

Do NOT CLEAN BLOCK WITH MURIATIC ACID!

Use a cleaner and weatherproofer made specifically for this block.
follow the manufacturer's recommendations!

Clean these blocks with:

► **SURE-KLEAN** ►

CUSTOM MASONRY CLEANER

For best overall appearance and color uniformity

- Improves color brightness, depth and uniformity.
- Removes mortar smears, heavy efflorescence, and embedded stains.
- Designed for colored concrete.
- Designed for use with pressure water rinsing.
- Improves bond of color coatings.
- Improves penetration of protective treatments.

Weatherproof these blocks with:

► **SURE-KLEAN** ►

CUSTOM MASONRY SEALER

For best weather resistance

- Controls rainwater penetration through exterior masonry and concrete walls.
- Low odor
- Treated surfaces resist penetration of many types of graffiti.
- Simplifies graffiti removal.
- Helps control efflorescence, mildew and other moisture-related stains.
- Treated surfaces exhibit excellent surface beading and withstand exposure to sunlight and extreme temperatures.

by
PROSOCO
SINCE 1939

Laboratory testing has identified the above products as most effective on and compatible with the concrete block listed in this catalog. For free copies of the test results, product data sheets and other product literature, and other information related to the care of this block, contact PROSOCO Customer Care toll free at (800) 255-4255. Or visit PROSOCO's website at www.prosoco.com.

Custom Masonry Cleaner should be applied with a pump up sprayer not to exceed 50psi.

**PORTSMOUTH
BLOCK, INC.**

2700 Gallia ST.
Portsmouth, OH 45662
(740) 353-4113

Sure Klean® Custom Masonry Cleaner

ADVANTAGES

- Improves color brightness, depth and uniformity.
- Removes mortar smears, efflorescence, and embedded stains.
- Designed for colored concrete.
- Designed for use with pressure water rinsing.
- Improves bond of color coatings.
- Improves penetration of protective treatments.

PREPARATION

Protect people, vehicles, property, metal, painted surfaces, plants and other nonmasonry materials from product, splash, rinse, residue, wind drift and fumes. Clean masonry before installing nonmasonry items. If already installed, protect with polyethylene before application. Sure Klean® Strippable Masking is appropriate for use with this product to protect windows. All surfaces and sealants should be cured and dry before cleaning. Cleaning high-strength mortar/grout within seven days improves results. Do not apply when temperature is below freezing or will be overnight. If freezing conditions exist before application, let the surface thaw.

EQUIPMENT

Application: Soft-fibered, tampico masonry washing brush or low-pressure spray equipment fitted with acid-resistant hoses and gaskets. Don't use pressure spray above 50 psi. This drives the cleaner into the surface, making rinse difficult. May cause stains.

Clean: Wooden blocks or other nonmetallic scrapers.

Rinse: Pressure rinsing equipment providing at least 400 psi at 4–6 gpm delivered through a 15–40 degree fan spray tip.

APPLICATION

Before use, read the container label and product data sheet. ALWAYS TEST before overall application. Test using the following application instructions. Let surface dry thoroughly before inspection and approval.

Dilutions: Dilute with 2 to 6 parts water. Test for proper dilution. Always pour COLD water into empty bucket first, then carefully add product. NEVER USE HOT WATER. Use polyethylene or polypropylene buckets only.

Coverage

Porous, textured surfaces: 50 sq. ft. per gal. prepared cleaner.

Dense, smooth surfaces: up to 150 sq. ft. per gal. prepared cleaner.

Application instructions

1. Wet surface with clean water.
2. Apply prepared cleaner directly to surface.
3. Let cleaner dwell for 2–3 minutes.
4. Reapply. Scrub or scrape areas of heavy soiling
5. Rinse thoroughly with fresh water, from bottom up. If pressure rinser is not available, brush the surface while rinsing.

CUSTOMER CARE

Factory representatives are available for job-site, product, environment and safety assistance with no obligation. Call 800-255-4255 and ask for Customer Care—technical support.

Always read product data sheets thoroughly before using these products.

Sure Klean® Custom Masonry Sealer

ADVANTAGES

- Keeps water out of masonry and concrete walls.
- Low odor
- Simplifies graffiti removal.
- Helps control moisture-related stains.
- Service life of 5–7 years.

PREPARATION

Protect people, property, vehicles, plants, windows, painted surfaces, anodized aluminum and all nonmasonry surfaces from product, spray, wind drift and fumes. Sure Klean® Strippable Masking is not appropriate for use with Custom Masonry Sealer. Surface should be clean, dry and cured. If cleaning is necessary, use the appropriate Sure Klean® cleaner. Do not use raw acids. Sealing and caulking compounds should be in place and cured. Surface and air temperatures should be 40°F–90°F during application. Higher temperatures evaporate the solvent carrier and reduce penetration. If freezing conditions exist before application, let the surface thaw.

EQUIPMENT

Use brush, roller or low-pressure spray (20 psi). Fit spray equipment with stainless steel or brass fittings and gaskets suitable for solvent solutions. Use fan spray tips to avoid atomizing the material. Brushes and rollers should be nylon or other synthetic resistant to solvents.

APPLICATION

Before use, read the container label and product data sheet. ALWAYS TEST before overall application. Test using the following application instructions. Let surface dry thoroughly before inspection and approval. Verify any darkening from the treatment is acceptable. Use in concentrate. DO NOT DILUTE OR ALTER. Stir thoroughly before use. Keep container tightly sealed until ready to use. Opened sealer must be used immediately.

APPLICATION INSTRUCTIONS

Spray

1. Saturate surface from the bottom up. Apply enough for a 6" to 8" rundown below the contact point.
2. Let the first coat penetrate for 2–3 minutes. Resaturate.

Brush or Roller

1. Saturate the surface.
2. Avoid excessive overlapping. Brush out runs and drips.

Porous surfaces may need 2 coats. Apply the 2nd coat as soon as the 1st coat is dry to touch, or within 2 hours of the 1st coat. More than 2 hours reduces 2nd coat effectiveness. Treatments develop full water-resistance in 24 hours. Protect treated surfaces from rain for 4–6 hours following application.

Cleanup: Clean tools with mineral spirits.

CUSTOMER CARE

Factory representatives are available for job-site, product, environment and safety assistance with no obligation. Call 800-255-4255 and ask for Customer Care—technical support.