

JOB NAME \_\_\_\_\_

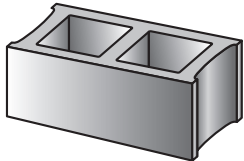
CUSTOMER \_\_\_\_\_

UNIT DESC/WEIGHT \_\_\_\_\_

COLOR CODE \_\_\_\_\_ RUN DATE \_\_\_\_\_

DRY BLOCK

# ATTENTION!



These blocks are made with natural aggregates and are sold as is. They have passed inspection and meet the specifications required. Usage of this product constitutes acceptance. If you have any questions regarding this product, please contact the manufacturer immediately.

Some color variation between blocks is normal and any variation should be distributed evenly through the wall when laying block.

## WARNING

**DO NOT CLEAN BLOCK WITH MURIATIC ACID!**

Use a cleaner and weatherproofer made specifically for this block and follow the manufacturer's recommendations!

*Clean these blocks with:*

►SURE-KLEAN►

BURNISHED

CUSTOM MASONRY CLEANER

For best overall appearance and color uniformity

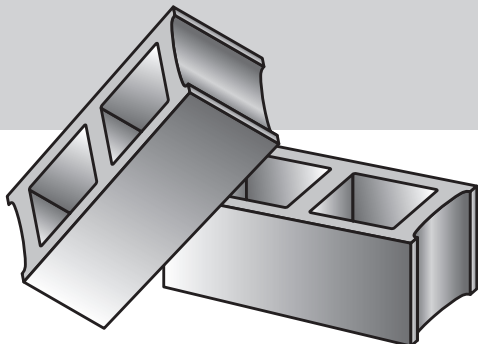
— by PROSOCO  
SINCE 1939

*Weatherproof these blocks with:*

►SURE-KLEAN►

CUSTOM MASONRY SEALER

For best weather resistance



Pressure rinse with 500 to 1500 psi at a water flow rate of 4 to 8 gallons per minute and a 15° to 40° fan spray tip. Reduce water pressure to avoid damage to delicate masonry.

IRVIN'S  
INTERSTATE  
BRICK & BLOCK  
COMPANY, INC



2301 N. Hawthorne Lane • P.O. Box 19783  
Indianapolis, IN 46219  
(317) 547-9511

# Manufacturer's recommendations

*post-construction cleanup | weatherproofing*

## WARNING

**Do NOT CLEAN BLOCK WITH MURIATIC ACID!**

Use a cleaner and weatherproofer made specifically for this block.  
follow the manufacturer's recommendations!

*Clean these blocks with:*

► **SURE-KLEAN** ►

### **BURNISHED CUSTOM MASONRY CLEANER**

**For best overall appearance and color uniformity**

- Softens excess mortar and job dirt on hard-to-clean concrete brick.
- Safe for use on concrete brick and cast stone.
- Won't etch mortar joints.
- Enhances color depth and uniformity
- Rinses clean without streaking

*Weatherproof these blocks with:*

► **SURE-KLEAN** ►

### **CUSTOM MASONRY SEALER**

**For best weather resistance**

- Controls rainwater penetration through exterior masonry and concrete walls.
- Low odor
- Treated surfaces resist penetration of many types of graffiti.
- Simplifies graffiti removal.
- Helps control efflorescence, mildew and other moisture-related stains.
- Treated surfaces exhibit excellent surface beading and withstand exposure to sunlight and extreme temperatures.

by  
**PROSOCO**  
SINCE 1939

Laboratory testing has identified the above products as most effective on and compatible with the concrete block listed in this catalog. For free copies of the test results, product literature or other information related to the care of this block, contact PROSOCO Customer Care toll-free at (800) 255-4255. Or visit PROSOCO's website at [www.prosoco.com](http://www.prosoco.com).

**IRVIN'S  
INTERSTATE  
BRICK & BLOCK  
COMPANY, INC**



2301 N. Hawthorne Lane • P.O. Box 19783  
Indianapolis, IN 46219  
(317) 547-9511

JOB NAME \_\_\_\_\_

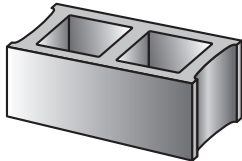
CUSTOMER \_\_\_\_\_

UNIT DESC/WEIGHT \_\_\_\_\_

COLOR CODE \_\_\_\_\_ RUN DATE \_\_\_\_\_

DRY BLOCK

# ATTENTION!



These blocks are made with natural aggregates and are sold as is. They have passed inspection and meet the specifications required. Usage of this product constitutes acceptance. If you have any questions regarding this product, please contact the manufacturer immediately.

Some color variation between blocks is normal and any variation should be distributed evenly through the wall when laying block.

## WARNING

**DO NOT CLEAN BLOCK WITH MURIATIC ACID!**

Use a cleaner and weatherproofer made specifically for this block and follow the manufacturer's recommendations!

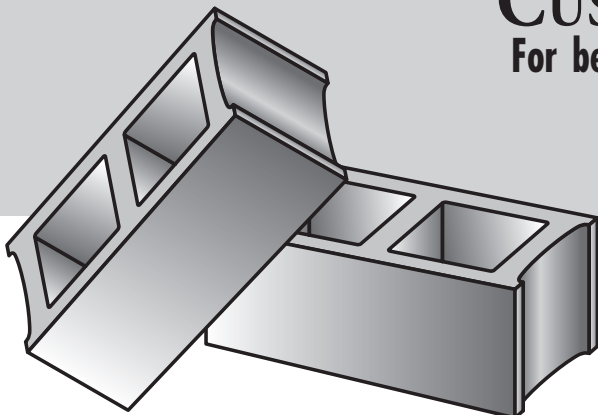
*Clean these blocks with:*

➤ **SURE-KLEAN** ➤

**CUSTOM MASONRY CLEANER**

For best overall appearance and color uniformity

— by **PROSOCO**  
SINCE 1939



Pressure rinse with 500 to 1500 psi at a water flow rate of 4 to 8 gallons per minute and a 15° to 40° fan spray tip. Reduce water pressure to avoid damage to delicate masonry.

**IRVIN'S  
INTERSTATE  
BRICK & BLOCK  
COMPANY, INC**



2301 N. Hawthorne Lane • P.O. Box 19783  
Indianapolis, IN 46219  
(317) 547-9511

# Manufacturer's recommendations

*post-construction cleandown | weatherproofing*

## WARNING

**Do NOT CLEAN BLOCK WITH MURIATIC ACID!**

Use a cleaner and weatherproofer made specifically for this block.  
follow the manufacturer's recommendations!

*Clean these blocks with:*

►**SURE-KLEAN**►

## CUSTOM MASONRY CLEANER

**For best overall appearance and color uniformity**

- Improves color brightness, depth and uniformity.
- Removes mortar smears, heavy efflorescence, and embedded stains.
- Designed for colored concrete.
- Designed for use with pressure water rinsing.
- Improves bond of color coatings.
- Improves penetration of protective treatments.

by  
**PROSOCO**  
SINCE 1939

Laboratory testing has identified the above products as most effective on and compatible with the concrete block listed in this catalog. For free copies of the test results, product literature or other information related to the care of this block, contact PROSOCO Customer Care toll-free at (800) 255-4255. Or visit PROSOCO's website at [www.prosoco.com](http://www.prosoco.com).

**IRVIN'S  
INTERSTATE  
BRICK & BLOCK  
COMPANY, INC**



2301 N. Hawthorne Lane • P.O. Box 19783  
Indianapolis, IN 46219  
(317) 547-9511

# Sure Klean®

## Custom Masonry Cleaner Cleaning Specification

**Specifier Note:** The information provided below is intended to guide the Architect in developing specifications for products manufactured by PROSOCO, Inc. and should not be viewed as a complete source of information about the product(s). The Architect should always refer to the Product Data Sheet and MSDS for additional recommendations and for safety information. See also PROSOCO Section 04900 Masonry Restoration & Cleaning.

**Specifier Note:** Paragraph below is for PART 1 GENERAL, Quality Assurance.

### Test Area

Test a minimum 4 ft. by 4 ft. area on each type of masonry. Use manufacturer's application instructions. Let test area dry 3 to 7 days before inspection. Keep test panels available for comparison throughout the cleaning project.

**Specifier Note:** Paragraphs below are for PART 2 PRODUCTS, Manufacturers and Products.

**Manufacturer:** PROSOCO, Inc., 3741 Greenway Circle, Lawrence, KS 66046. Phone: (800) 255-4255; Fax: (785) 830-9797. E-mail: CustomerCare@prosoco.com

### Product Description

Sure Klean® Custom Masonry Cleaner is a concentrated, general-purpose acidic cleaner that improves the color and uniformity of most custom masonry and colored concrete. When used in strong solutions, Custom Masonry Cleaner can be used for additional aggregate exposure ("weathering"). Custom Masonry Cleaner removes concrete splashes, excess mortar, mud, retarders, heavy efflorescence, embedded stains, rust and surface soiling from textured custom masonry surfaces.

### Technical Data

FORM: Clear liquid, slight amber color

SPECIFIC GRAVITY: 1.13

FLASH POINT: None

pH: 0.30 @ 1:6 dilution

FREEZE POINT: <-22 degrees F (<-30 degrees C)

WT./GAL.: 9.41 lbs.

### Limitations

- Not for use on polished or burnished surfaces.
- Will not correct damage caused by improper cleaning.
- May etch smooth concrete surfaces. Use Sure Klean® Burnished Custom Masonry Cleaner where no etch is desired.

**Specifier Note:** Paragraphs below are for PART 3 EXECUTION, Installation.

### Application

Before applying, read "Protect" and "Precautionary Measures" sections in the Manufacturer's Product Data Sheet for Custom Masonry Cleaner. Dilute Custom Masonry Cleaner concentrate with 2–6 parts water. Refer to Product Data Sheet for recommended dilution for intended use.

1. Always prewet surface with clean water. On vertical surfaces, keep lower areas wet to avoid streaks.
2. Apply the prediluted cleaning solution directly to surface using a masonry brush or low-pressure spray.
3. Let cleaner dwell for 2–3 minutes.
4. Reapply cleaner. Scrub or scrape areas of heavy soiling using wood blocks or nonmetallic scrapers.
5. Rinse thoroughly with fresh water. If pressure-rinsing equipment is not available, brush the surface while rinsing.

**Note:** Multiple applications may etch sensitive surfaces.