

JOB NAME _____

CUSTOMER _____

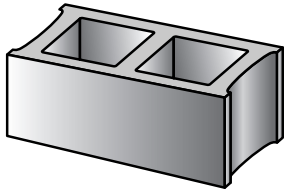
UNIT DESC/WEIGHT _____

COLOR CODE _____ RUN DATE _____

WATER REPELLENT

Water Repellent blocks require mortar additive to produce repellent wall.

ATTENTION!



These blocks are made with natural aggregates and are sold as is. They have passed inspection and meet the specifications required. Usage of this product constitutes acceptance. If you have any questions regarding this product, please contact the manufacturer immediately.

Some color variation between blocks is normal and any variation should be distributed evenly through the wall when laying block.

WARNING

Do not clean block with muriatic acid!
Use a cleaner and weatherproofer made specifically for this block
and follow the manufacturer's recommendations!

Clean these blocks with:

➤ **SURE-KLEAN** ➤

CUSTOM MASONRY CLEANER

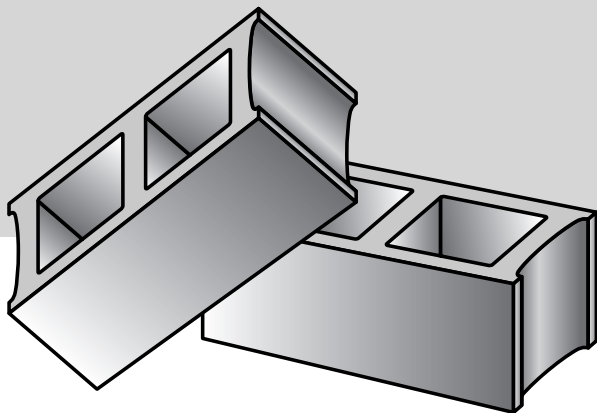
For best overall appearance and color uniformity

Weatherproof these blocks with:

➤ **SURE-KLEAN** ➤

CUSTOM MASONRY SEALER

For best weather resistance



— by **PROSOCO**
SINCE 1939

Pressure rinse with 500 to 1500 psi at a water flow rate of 4 to 8 gallons per minute and a 15° to 40° fan spray tip.
Reduce water pressure to avoid damage to delicate masonry.
Custom Masonry Cleaner should be applied with a pump up sprayer not to exceed 50psi.



CHICAGO BLOCK & BRICK CO., INC.
P.O. Box 388199
Chicago, IL 60638

(773) 585-3550
(708) 458-8130
(800) 300-1234

Manufacturer's recommendations

post-construction cleandown | weatherproofing

WARNING

Do NOT CLEAN BLOCK WITH MURIATIC ACID!

Use a cleaner and weatherproofer made specifically for this block.
follow the manufacturer's recommendations!

Clean these blocks with:

► **SURE-KLEAN** ►

CUSTOM MASONRY CLEANER

For best overall appearance and color uniformity

- Improves color brightness, depth and uniformity.
- Removes mortar smears, heavy efflorescence, and embedded stains.
- Designed for colored concrete.
- Designed for use with pressure water rinsing.
- Improves bond of color coatings.
- Improves penetration of protective treatments.

Weatherproof these blocks with:

► **SURE-KLEAN** ►

CUSTOM MASONRY SEALER

For best weather resistance

- Controls rainwater penetration through exterior masonry and concrete walls.
- Low odor
- Treated surfaces resist penetration of many types of graffiti.
- Simplifies graffiti removal.
- Helps control efflorescence, mildew and other moisture-related stains.
- Treated surfaces exhibit excellent surface beading and withstand exposure to sunlight and extreme temperatures.

by
PROSOCO
SINCE 1939

Laboratory testing has identified the above products as most effective on and compatible with the concrete block listed in this catalog. For free copies of the test results, product data sheets and other product literature, and other information related to the care of this block, contact PROSOCO Customer Care toll free at (800) 255-4255. Or visit PROSOCO's website at www.prosoco.com.

Custom Masonry Cleaner should be applied with a pump up sprayer not to exceed 50psi.



CHICAGO BLOCK & BRICK CO., INC.
P.O. Box 388199
Chicago, IL 60638

(773) 585-3550
(708) 458-8130
(800) 300-1234

Sure Klean® Custom Masonry Cleaner

ADVANTAGES

- Improves color brightness, depth and uniformity.
- Removes mortar smears, efflorescence, and embedded stains.
- Designed for colored concrete.
- Designed for use with pressure water rinsing.
- Improves bond of color coatings.
- Improves penetration of protective treatments.

PREPARATION

Protect people, vehicles, property, metal, painted surfaces, plants and other nonmasonry materials from product, splash, rinse, residue, wind drift and fumes. Clean masonry before installing nonmasonry items. If already installed, protect with polyethylene before application. Sure Klean® Strippable Masking is appropriate for use with this product to protect windows. All surfaces and sealants should be cured and dry before cleaning. Cleaning high-strength mortar/grout within seven days improves results. Do not apply when temperature is below freezing or will be overnight. If freezing conditions exist before application, let the surface thaw.

EQUIPMENT

Application: Soft-fibered, tampico masonry washing brush or low-pressure spray equipment fitted with acid-resistant hoses and gaskets. Don't use pressure spray above 50 psi. This drives the cleaner into the surface, making rinse difficult. May cause stains.

Clean: Wooden blocks or other nonmetallic scrapers.

Rinse: Pressure rinsing equipment providing at least 400 psi at 4–6 gpm delivered through a 15–40 degree fan spray tip.

APPLICATION

Before use, read the container label and product data sheet. ALWAYS TEST before overall application. Test using the following application instructions. Let surface dry thoroughly before inspection and approval.

Dilutions: Dilute with 2 to 6 parts water. Test for proper dilution. Always pour COLD water into empty bucket first, then carefully add product. NEVER USE HOT WATER. Use polyethylene or polypropylene buckets only.

Coverage

Porous, textured surfaces: 50 sq. ft. per gal. prepared cleaner.

Dense, smooth surfaces: up to 150 sq. ft. per gal. prepared cleaner.

Application instructions

1. Wet surface with clean water.
2. Apply prepared cleaner directly to surface.
3. Let cleaner dwell for 2–3 minutes.
4. Reapply. Scrub or scrape areas of heavy soiling
5. Rinse thoroughly with fresh water, from bottom up. If pressure rinser is not available, brush the surface while rinsing.

CUSTOMER CARE

Factory representatives are available for job-site, product, environment and safety assistance with no obligation. Call 800-255-4255 and ask for Customer Care—technical support.

Sure Klean® Custom Masonry Sealer

ADVANTAGES

- Keeps water out of masonry and concrete walls.
- Low odor
- Simplifies graffiti removal.
- Helps control moisture-related stains.
- Service life of 5–7 years.

PREPARATION

Protect people, property, vehicles, plants, windows, painted surfaces, anodized aluminum and all nonmasonry surfaces from product, spray, wind drift and fumes. Sure Klean® Strippable Masking is not appropriate for use with Custom Masonry Sealer. Surface should be clean, dry and cured. If cleaning is necessary, use the appropriate Sure Klean® cleaner. Do not use raw acids. Sealing and caulking compounds should be in place and cured. Surface and air temperatures should be 40°F–90°F during application. Higher temperatures evaporate the solvent carrier and reduce penetration. If freezing conditions exist before application, let the surface thaw.

EQUIPMENT

Use brush, roller or low-pressure spray (20 psi). Fit spray equipment with stainless steel or brass fittings and gaskets suitable for solvent solutions. Use fan spray tips to avoid atomizing the material. Brushes and rollers should be nylon or other synthetic resistant to solvents.

APPLICATION

Before use, read the container label and product data sheet. ALWAYS TEST before overall application. Test using the following application instructions. Let surface dry thoroughly before inspection and approval. Verify any darkening from the treatment is acceptable. Use in concentrate. DO NOT DILUTE OR ALTER.

Stir thoroughly before use. Keep container tightly sealed until ready to use. Opened sealer must be used immediately.

APPLICATION INSTRUCTIONS

Spray

1. Saturate surface from the bottom up. Apply enough for a 6" to 8" rundown below the contact point.
2. Let the first coat penetrate for 2–3 minutes. Resaturate.

Brush or Roller

1. Saturate the surface.
2. Avoid excessive overlapping. Brush out runs and drips.

Porous surfaces may need 2 coats. Apply the 2nd coat as soon as the 1st coat is dry to touch, or within 2 hours of the 1st coat. More than 2 hours reduces 2nd coat effectiveness. Treatments develop full water-resistance in 24 hours. Protect treated surfaces from rain for 4–6 hours following application.

Cleanup: Clean tools with mineral spirits.

CUSTOMER CARE

Factory representatives are available for job-site, product, environment and safety assistance with no obligation. Call 800-255-4255 and ask for Customer Care—technical support.

This document is for educational purposes only.

For technical and use purposes, get a product data sheet and MSDS by visiting www.prosoco.com, or calling toll-free 800-255-4255. Always read label on product container before use.

Sure Klean® Custom Masonry Cleaner Cleaning Specification

Specifier Note: The information provided below is intended to guide the Architect in developing specifications for products manufactured by PROSOCO, Inc. and should not be viewed as a complete source of information about the product(s). The Architect should always refer to the Product Data Sheet and MSDS for additional recommendations and for safety information. See also PROSOCO Section 04900 Masonry Restoration & Cleaning.

Specifier Note: Paragraph below is for PART 1 GENERAL, Quality Assurance.

Test Area

Test a minimum 4 ft. by 4 ft. area on each type of masonry. Use manufacturer's application instructions. Let test area dry 3 to 7 days before inspection. Keep test panels available for comparison throughout the cleaning project.

Specifier Note: Paragraphs below are for PART 2 PRODUCTS, Manufacturers and Products.

Manufacturer: PROSOCO, Inc., 3741 Greenway Circle, Lawrence, KS 66046. Phone: (800) 255-4255; Fax: (785) 830-9797.

E-mail: CustomerCare@proso.com

Product Description

Sure Klean® Custom Masonry Cleaner is a concentrated, general-purpose acidic cleaner that improves the color and uniformity of most custom masonry and colored concrete. When used in strong solutions, Custom Masonry Cleaner can be used for additional aggregate exposure ("weathering"). Custom Masonry Cleaner removes concrete splashes, excess mortar, mud, retarders, heavy efflorescence, embedded stains, rust and surface soiling from textured custom masonry surfaces.

Technical Data

FORM: Clear liquid, slight amber color

SPECIFIC GRAVITY: 1.13

FLASH POINT: None

pH: 0.30 @ 1:6 dilution

FREEZE POINT: <-22 degrees F (<-30 degrees C)

WT./GAL.: 9.41 lbs.

Limitations

- Not for use on polished or burnished surfaces.
- Will not correct damage caused by improper cleaning.
- May etch smooth concrete surfaces. Use Sure Klean® Burnished Custom Masonry Cleaner where no etch is desired.

Specifier Note: Paragraphs below are for PART 3 EXECUTION, Installation.

Application

Before applying, read "Protect" and "Precautionary Measures" sections in the Manufacturer's Product Data Sheet for Custom Masonry Cleaner. Dilute Custom Masonry Cleaner concentrate with 2–6 parts water. Refer to Product Data Sheet for recommended dilution for intended use.

1. Always prewet surface with clean water. On vertical surfaces, keep lower areas wet to avoid streaks.
2. Apply the prediluted cleaning solution directly to surface using a masonry brush or low-pressure spray.
3. Let cleaner dwell for 2–3 minutes.
4. Reapply cleaner. Scrub or scrape areas of heavy soiling using wood blocks or nonmetallic scrapers.
5. Rinse thoroughly with fresh water. If pressure-rinsing equipment is not available, brush the surface while rinsing.

Note: Multiple applications may etch sensitive surfaces.

Sure Klean® Custom Masonry Sealer Water Repellent Specification

Specifier Note: The information provided below is intended to guide the Architect in developing specifications for products manufactured by PROSOCO, Inc. and should not be viewed as a complete source of information about the product(s). The Architect should always refer to the Product Data Sheet and MSDS for additional recommendations and for safety information. See also PROSOCO Section 07190 Water Repellents.

Specifier Note: Paragraph below is for PART 1 GENERAL, Quality Assurance.

Test Area

Test a minimum 4 ft. by 4 ft. area on each type of masonry. Use the manufacturer's application instructions. Let test area protective treatment cure before inspection. Keep test panels available for comparison throughout the protective treatment project.

Specifier Note: Paragraphs below are for PART 2 PRODUCTS, Manufacturers and Products.

Manufacturer: PROSOCO, Inc., 3741 Greenway Circle, Lawrence, KS 66046. Phone: (800) 255-4255; Fax: (785) 830-9797.

E-mail: CustomerCare@proso.com

Product Description

Sure Klean® Custom Masonry Sealer is a clear, solvent-based silicone elastomer formulated to weatherproof custom masonry units, cast stone, architectural concrete block, precast concrete, wood and porous masonry. Custom Masonry Sealer penetrates and fills pores to prevent water penetration through exterior walls exposed to normal weathering. Custom Masonry Sealer has excellent UV stability and provides long-lasting protection against water penetration and many types of graffiti. Easy to apply with low-pressure spray, brush or roller.

Technical Data

ACTIVE SUBSTANCE: Silicone elastomer

ACTIVE SOLIDS: 9%

FORM: Clear liquid

SPECIFIC GRAVITY: 0.802

FLASH POINT: 100 degrees F (38 degrees C) (ASTM D 3273)

WT./GAL.: 6.67 lbs.

VOC content: 725 g/L

FREEZE POINT: <-22 degrees F (<-30 degrees C)

Limitations

- May not be compatible with previously applied surface treatments.
- Not for use on horizontal, traffic bearing surfaces.
- Not suitable for extremely dense or polished surfaces.
- Not suitable for asphaltic surfaces.
- Not recommended for below-grade applications.
- Will not prevent water penetration through structural cracks, defects or open joints.

Specifier Note: Paragraphs below are for PART 3 EXECUTION, Installation.

Application

Before applying, read "Protect" and "Precautionary Measures" sections in the Manufacturer's Product Data Sheet for Custom Masonry Sealer. Refer to the Product Data Sheet for additional information about application of Custom Masonry Sealer. Do not dilute or alter.

Vertical Application Instructions

1. For best results, apply Custom Masonry Sealer "wet-on-wet" to a visibly dry and absorbent surface.
2. Alternate application methods

Spray: Saturate from the bottom up, creating a 6" to 8" rundown below the spray contact point. Let the first application penetrate for 2–3 minutes. Resaturate. Less material will be needed for the second application.

Note: When spray applying to fluted surfaces, spray in an "overlapping X-pattern" to ensure complete coverage of recessed surfaces. When applying to burnished, ground face or similar smooth surfaces, avoid over application. Reduce rundown to 4" to 6" below the contact point.

Brush or Roller: Apply sufficient material to thoroughly saturate the surface. Avoid excessive overlapping. Brush out heavy runs and drops that don't penetrate.

Dense Surfaces: Apply a single coat. Use enough to completely wet the surface without creating drips, puddles or rundown.

Second Coat Application: Extremely porous surfaces will require 2 coats to provide maximum protection. Apply the second coat as soon as first coat is dry to touch, or within 2 hours of the first coat.