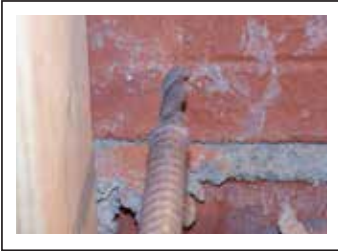


INSTALLATION GUIDE FOR GRIP-TIE SYSTEM



Step 1

Drill ½" hole through the sheathing approximately ¼" - ¾" from the stud face (parallel with mounting face).



Step 2

On center with ½" hole, drill a ⅜" diameter hole in brick veneer 2-½" deep blow out drill lines.



Step 3

Thread shaft of SBRA anchor into the Grip-Tie 501 Setting Tool until it bottoms in the tool.



Step 4

Slide tool and anchor assembly through drilled holes until the washer contacts the brick face. Tighten anchor to 40-75 in-lbs torque. Remove tool.



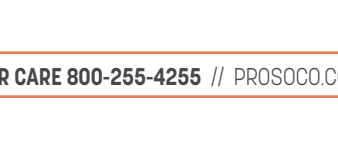
Step 5

Thread (1) SS Lock Nut provided onto anchor shaft and position it about midway of the stud width.



Step 6

Slide on (1) SS washer provided and bracket. Secure the bracket with 2 attachment screws (provided) to the stud.



Step 7

Assemble SS washer and SS lock nut to the exposed shaft and tighten until contact to the bracket is made.

Step 8

Loosen SS lock nut 1 turn of the nut past tight. Installation complete.

INSTALLATION GUIDE FOR STITCH-TIE SYSTEM



Step 1

Drill $\frac{1}{4}$ " hole through the sheathing approximately $\frac{1}{4}$ " - $\frac{3}{4}$ " from the stud face (parallel with mounting face) into brick or joint approximately 2' or greater.



Step 2

Select a Stitch-Tie helical anchor equal to the distance from the stud face to the brick and install per Stitch-Tie installation requirements.



Step 3

Attach Facade-Tie Bracket to the Stitch-Tie anchor.



Step 4

Attach the Facade-Tie Bracket to the stud with the supplied hardware.



Step 4

Installation complete.